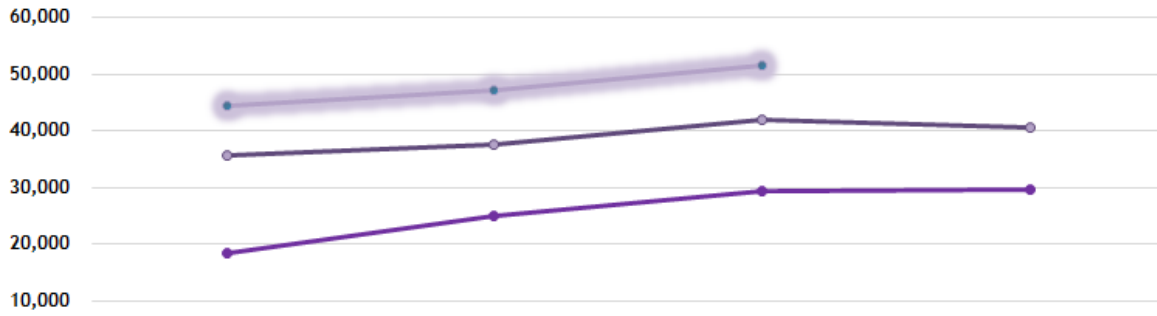
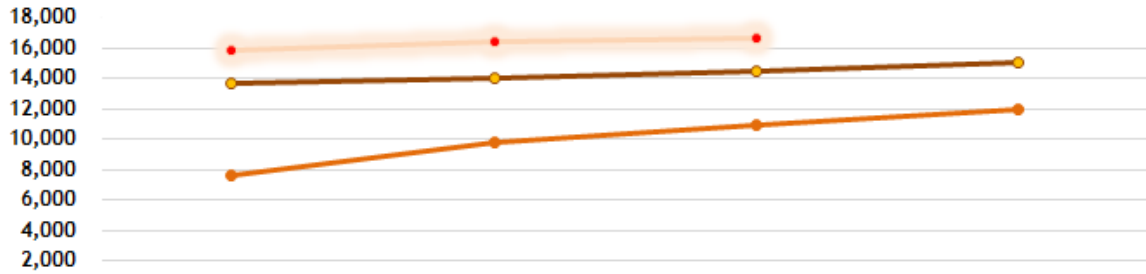


### BUSTANG SYSTEM RIDERSHIP QUARTERLY COMPARISON



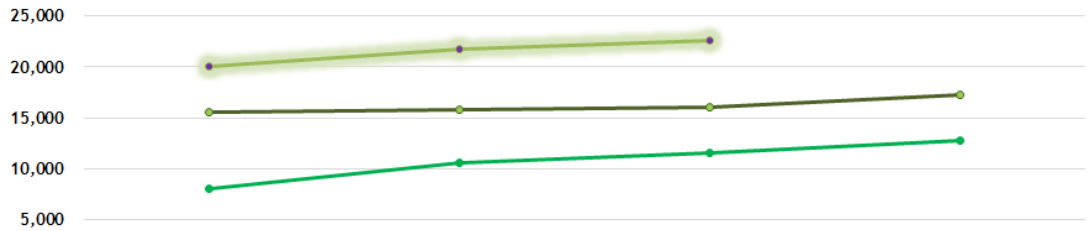
	Q1 Jul-Sep	Q2 Oct-Dec	Q3 Jan-Mar	Q4 Apr-Jun
FY15/16	18,497	25,035	29,289	29,682
FY16/17	35,683	37,697	41,967	40,517
2017-18	44,531	47,275	51,595	

### SOUTH ROUTE RIDERSHIP QUARTERLY COMPARISON



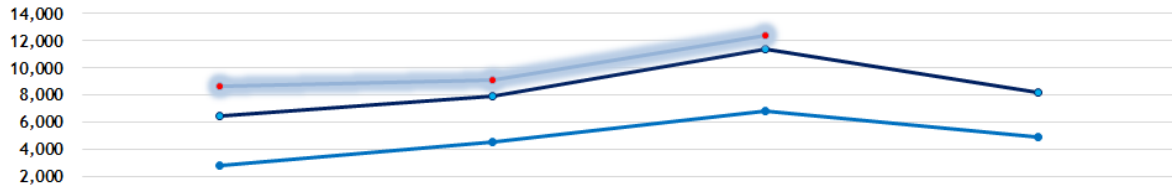
	Q1 Jul-Sep	Q2 Oct-Dec	Q3 Jan-Mar	Q4 Apr-Jun
FY15/16	7,636	9,822	10,934	12,012
FY16/17	13,691	14,017	14,536	15,062
2017-18	15,842	16,378	16,646	

### NORTH ROUTE RIDERSHIP QUARTERLY COMPARISON



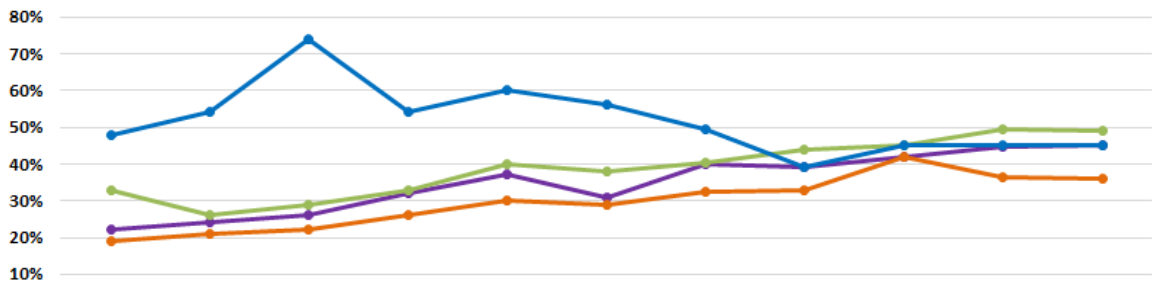
	Q1 Jul-Sep	Q2 Oct-Dec	Q3 Jan-Mar	Q4 Apr-Jun
FY15/16	8,036	10,612	11,549	12,762
FY16/17	15,512	15,764	16,073	17,293
2017-18	20,057	21,768	22,548	

### WEST ROUTE RIDERSHIP QUARTERLY COMPARISON



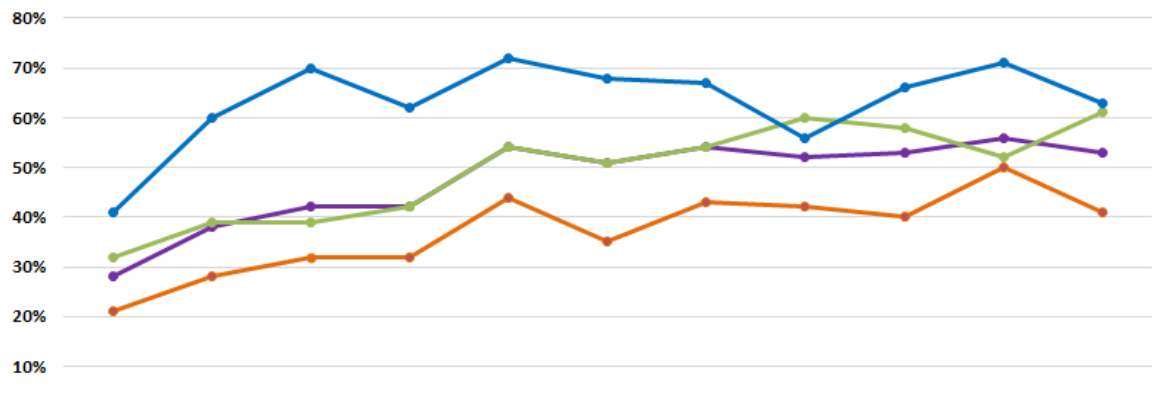
	Q1 Jul-Sep	Q2 Oct-Dec	Q3 Jan-Mar	Q4 Apr-Jun
FY15/16	2,825	4,601	6,806	4,908
FY16/17	6,480	7,916	11,358	8,162
2017-18	8,632	9,129	12,401	

### LOAD FACTOR BY ROUTE



	Q1 Jul-Sep 2015	Q2 Oct-Dec 2015	Q3 Jan-Mar 2016	Q4 Apr-Jun 2016	Q1 Jul-Sep 2016	Q2 Oct-Dec 2016	Q3 Jan-Mar 2017	Q4 Apr-Jun 2017	Q1 Jul-Sep 2017	Q2 Oct-Dec 2017	Q3 Jan-Mar 2018
System	22%	24%	26%	32%	37%	31%	40%	39%	42%	45%	45%
South	19%	21%	22%	26%	30%	29%	32%	33%	42%	36%	36%
North	33%	26%	29%	33%	40%	38%	40%	44%	45%	49%	49%
West	48%	54%	74%	54%	60%	56%	49%	39%	45%	45%	45%

### FAREBOX RECOVERY RATIO



	Q1 Jul-Sep 2015	Q2 Oct-Dec 2015	Q3 Jan-Mar 2016	Q4 Apr-Jun 2016	Q1 Jul-Sep 2016	Q2 Oct-Dec 2016	Q3 Jan-Mar 2017	Q4 Apr-Jun 2017	Q1 Jul-Sep 2017	Q2 Oct-Dec 2017	Q3 Jan-Mar 2018
System	28%	38%	42%	42%	54%	51%	54%	52%	53%	56%	53%
South	21%	28%	32%	32%	44%	35%	43%	42%	40%	50%	41%
North	32%	39%	39%	42%	54%	51%	54%	60%	58%	52%	61%
West	41%	60%	70%	62%	72%	68%	67%	56%	66%	71%	63%