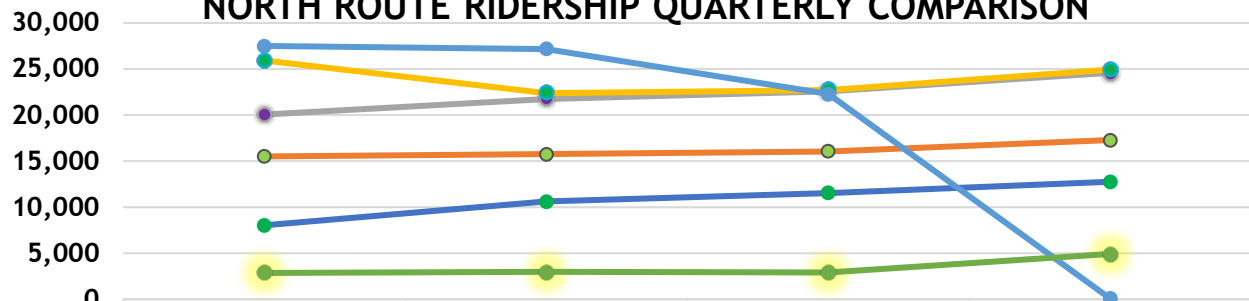
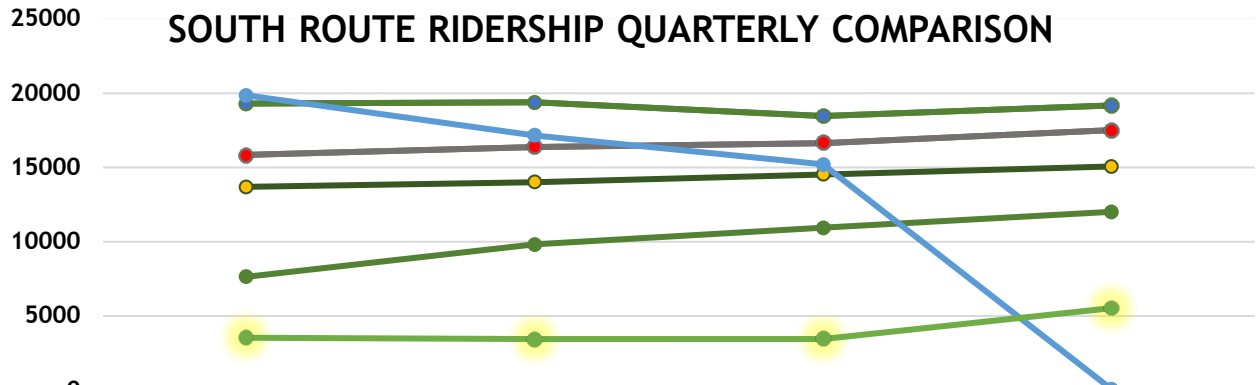


### NORTH ROUTE RIDERSHIP QUARTERLY COMPARISON



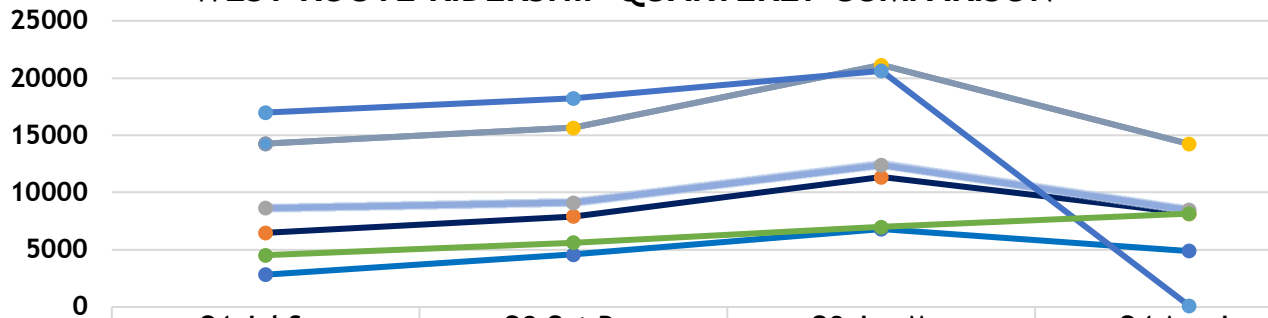
	Q1 Jul-Sep	Q2 Oct-Dec	Q3 Jan-Mar	Q4 Apr-Jun
2015-16	8,036	10,612	11,549	12,762
2016-17	15,512	15,764	16,073	17,293
2017-18	20,057	21,768	22,548	24,591
2018-19	25,929	22,380	22,723	24,933
2019-20	27,508	27,178	22,271	74
2020-21	2,862	2,982	2,892	4,926

### SOUTH ROUTE RIDERSHIP QUARTERLY COMPARISON



	Q1 Jul-Sep	Q2 Oct-Dec	Q3 Jan-Mar	Q4 Apr-Jun
FY15/16	7636	9822	10934	12012
FY16/17	13691	14017	14536	15062
2017-18	15842	16378	16646	17509
2018-19	19297	19383	18457	19158
2019-20	19852	17153	15201	74
2020-21	3,556	3,448	3,451	5,528

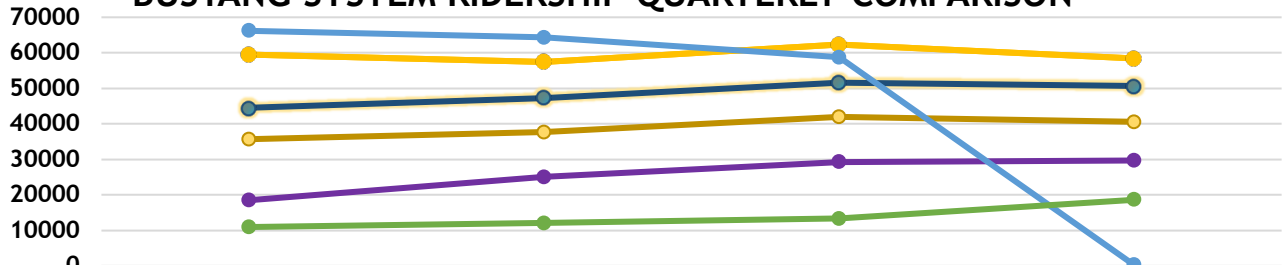
### WEST ROUTE RIDERSHIP QUARTERLY COMPARISON



	Q1 Jul-Sep	Q2 Oct-Dec	Q3 Jan-Mar	Q4 Apr-Jun
FY15/16	2825	4601	6806	4908
FY16/17	6480	7916	11358	8162
2017-18	8632	9129	12401	8463
2018-19	14272	15667	21148	14245
2019-20	16986	18232	20625	111
2020-21	4,531	5,631	6,981	8,158

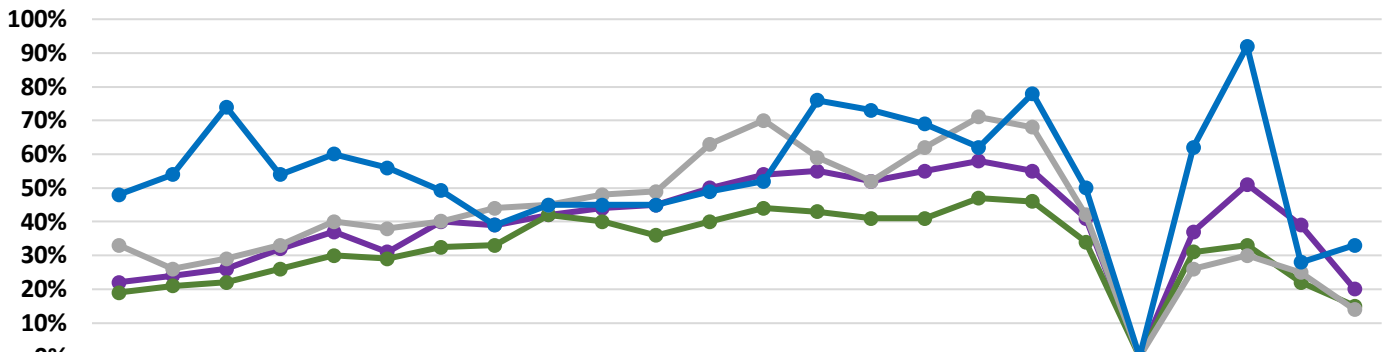
Please note – due to COVID 19, Bustang services were shut down for a majority of Q4 of FY2019-2020.

### BUSTANG SYSTEM RIDERSHIP QUARTERLY COMPARISON



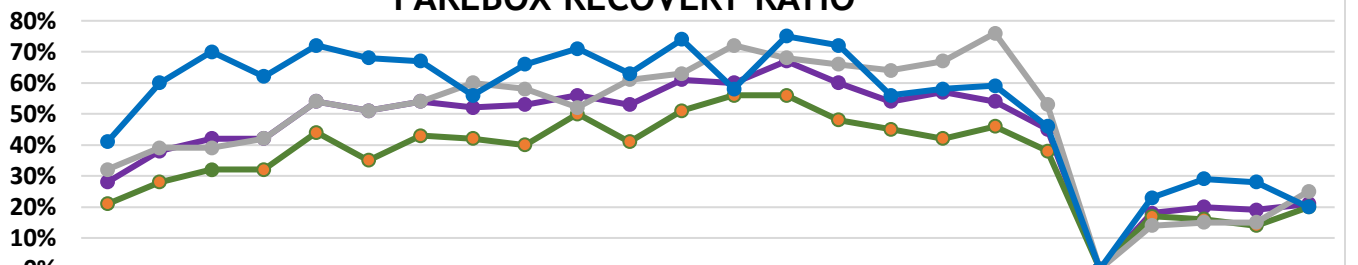
	Q1 Jul-Sep	Q2 Oct-Dec	Q3 Jan-Mar	Q4 Apr-Jun
FY15/16	18497	25035	29289	29682
FY16/17	35683	37697	41967	40517
2017-18	44531	47275	51595	50663
2018-19	59498	57430	62328	58336
2019-20	66192	64361	58726	259
2020-21	10,949	12,061	13,324	18,612

### LOAD FACTOR BY ROUTE



	Q1 Jul-Sep 2015	Q2 Oct-Dec 2015	Q3 Jan-Mar 2016	Q4 Apr-Jun 2016	Q1 Jul-Sep 2016	Q2 Oct-Dec 2016	Q3 Jan-Mar 2017	Q4 Apr-Jun 2017	Q1 Jul-Sep 2017	Q2 Oct-Dec 2017	Q3 Jan-Mar 2018	Q4 Apr-Jun 2018	Q1 Jul-Sep 2018	Q2 Oct-Dec 2018	Q3 Jan-Mar 2019	Q4 Apr-Jun 2019	Q1 Jul-Sep 2019	Q2 Oct-Dec 2019	Q3 Jan-Mar 2020	Q4 Apr-Jun 2020	Q1 Jul-Sep 2020	Q2 Oct-Dec 2020	Q3 Jan-Mar 2021	Q4 Apr-Jun 2021
Series1	22%	24%	26%	32%	37%	31%	40%	39%	42%	44%	45%	50%	54%	55%	52%	55%	58%	55%	41%	0%	37%	51%	39%	20%
South	19%	21%	22%	26%	30%	29%	32%	33%	42%	40%	36%	40%	44%	43%	41%	41%	47%	46%	34%	0%	31%	33%	22%	15%
North	33%	26%	29%	33%	40%	38%	40%	44%	45%	48%	49%	63%	70%	59%	52%	62%	71%	68%	42%	0%	26%	30%	25%	14%
West	48%	54%	74%	54%	60%	56%	49%	39%	45%	45%	45%	49%	52%	76%	73%	69%	62%	78%	50%	0%	62%	92%	28%	33%

### FAREBOX RECOVERY RATIO



	Q1 Jul-Sep '15	Q2 Oct-Dec 2015	Q3 Jan-Mar 2016	Q4 Apr-Jun 2016	Q1 Jul-Sep 2016	Q2 Oct-Dec 2016	Q3 Jan-Mar 2017	Q4 Apr-Jun 2017	Q1 Jul-Sep 2017	Q2 Oct-Dec 2017	Q3 Jan-Mar 2018	Q4 Apr-Jun 2018	Q1 Jul-Sep 2018	Q2 Oct-Dec 2018	Q3 Jan-Mar 2019	Q4 Apr-Jun 2019	Q1 Jul-Sep 2019	Q2 Oct-Dec 2019	Q3 Jan-Mar 2020	Q4 Apr-Jun 2020	Q1 Jul-Sep 2020	Q2 Oct-Dec 2020	Q3 Jan-Mar 2021	Q4 Apr-Jun 2021
System	28%	38%	42%	42%	54%	51%	54%	52%	53%	56%	53%	61%	60%	67%	60%	54%	57%	54%	45%	0%	18%	20%	19%	21%
South	21%	28%	32%	32%	44%	35%	43%	42%	40%	50%	41%	51%	56%	56%	48%	45%	42%	46%	38%	0%	17%	16%	14%	20%
North	32%	39%	39%	42%	54%	51%	54%	60%	58%	52%	61%	63%	72%	68%	66%	64%	67%	76%	53%	0%	14%	15%	15%	25%
West	41%	60%	70%	62%	72%	68%	67%	56%	66%	71%	63%	74%	58%	75%	72%	56%	58%	59%	46%	0%	23%	29%	28%	20%