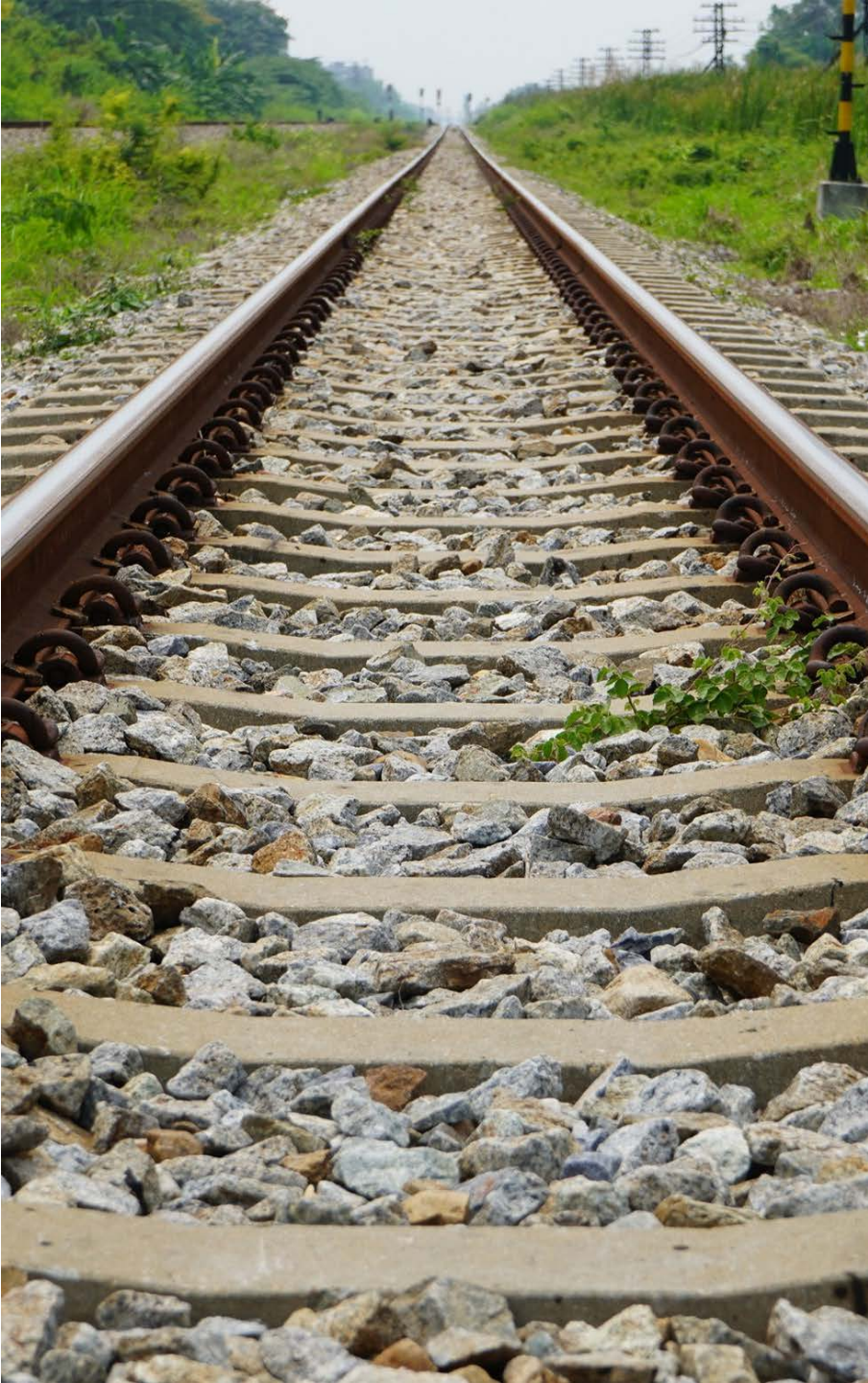




Front Range Passenger Rail

Service Development Plan and Project Specific NEPA





01 INTRODUCTIONS

02 YOUR TEAM

03 STRATEGIC ENGAGEMENT
DISCUSSION

04 QUESTION AND ANSWERS

**Your Team:
Targeted Expertise**

HDR

AECOM

BluePrint
STRATEGIES, LLC

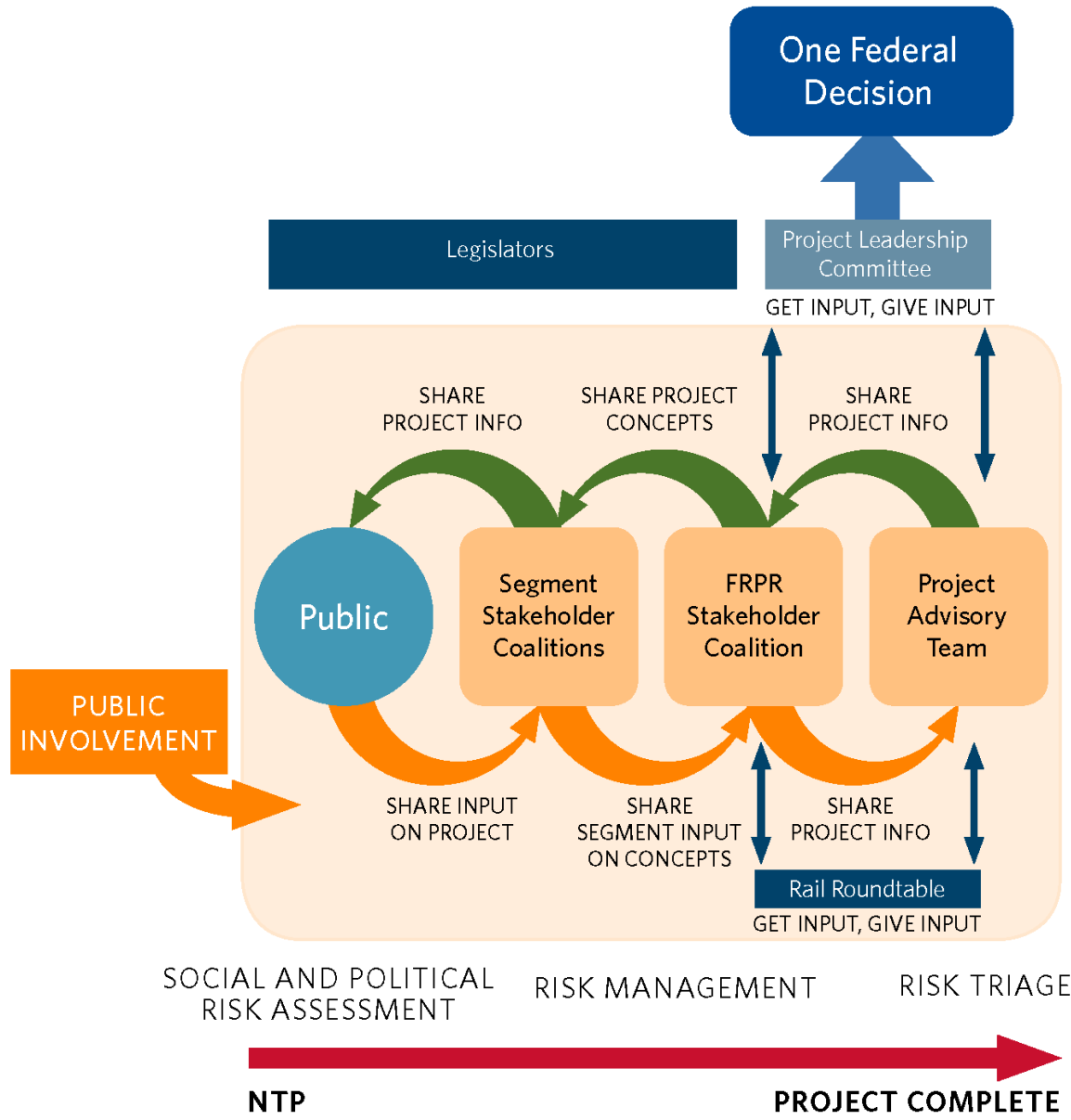
CDR ASSOCIATES
COLLABORATIVE DECISION RESOURCES

 **FELSBURG
HOLT &
ULLEVIG**



PEAK
Consulting Group, LLC
TAILORED NEPA SOLUTIONS

TRIUNITY



Strategic Engagement Discussion

Groups and Committees

Project Management Team (PMT)

- **Function:** Management and project-level decision making
- **Members:** SWC&FRPR Commission representatives, CDOT, federal agencies (as needed), Consultants
- **Decision-Making Authority:** Decisions on technical, process, and communication components
- **Frequency:** Bi-weekly

Technical Working Group (operating as part of PMT)

- **Function:** Integrate various disciplines and perspectives of agencies into the study
- **Members:** SWC&FRPR Commission representatives, CDOT, Consultants, Technical stakeholders
- **Decision-Making Authority:** Make recommendations on key issues and decisions at milestones
- **Frequency:** Bi-weekly or as needed



USG S 25 min
USG S 55 min
USG S 5:29pm
USG S 5:59pm

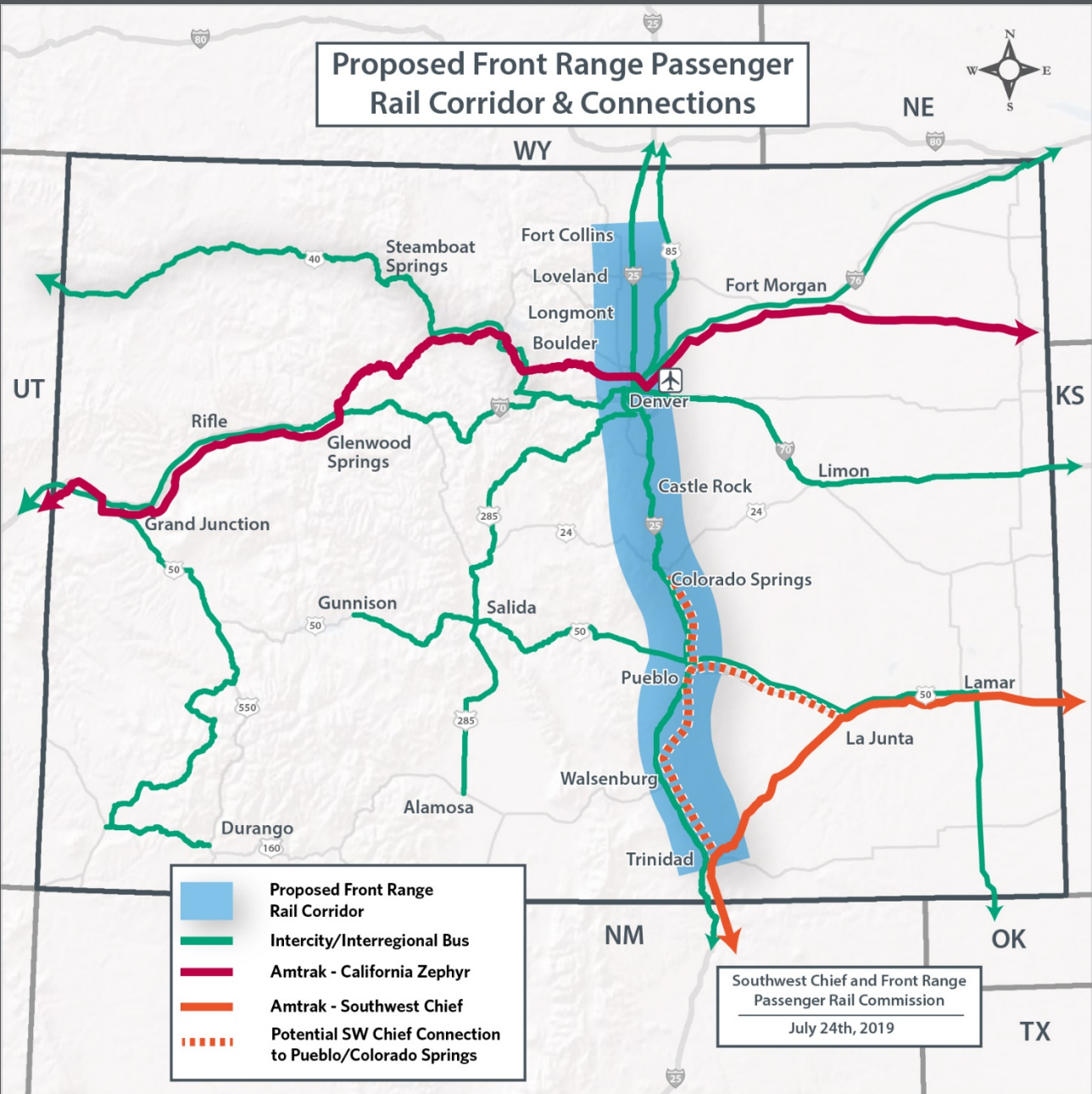


Groups and Committees

Segment Stakeholder Coalitions (North, Central, South)

- **Function:** Provide project information to and obtain feedback at the local level
- **Members:** Local stakeholders, consultants
- **Decision-Making Authority:** Share project information with segment communities; Gather community input and share with Corridor Stakeholder Coalition
- **Frequency:** Quarterly – First meeting tentatively Oct 2019

Proposed Front Range Passenger Rail Corridor & Connections



- Proposed Front Range Rail Corridor
- Intercity/Interregional Bus
- Amtrak - California Zephyr
- Amtrak - Southwest Chief
- Potential SW Chief Connection to Pueblo/Colorado Springs

Southwest Chief and Front Range Passenger Rail Commission
July 24th, 2019

Groups and Committees

Corridor Stakeholder Coalition

- **Function:** Create stakeholder-based recommendations for cohesive, corridor-wide project decisions
- **Members:** Segment Stakeholder Coalition representatives, consultants
- **Decision-Making Authority:** Recommendations and concurrence to PMT on corridor-wide project decisions
- **Frequency:** Quarterly - First meeting tentatively Nov 2019

Project Leadership Committee

- **Function:** Resolution of issues; contact for media; policy-level agency liaison
- **Members:** SWC&FRPR Commission, CDOT, Governor's Office, Lead Federal Agency, Consultants
- **Decision-Making Authority:** Decisions on policy issues, feedback on status of study activities and decisions
- **Frequency:** Major milestones

Rail Industry Roundtable

- **Function:** Provide rail industry-focused input on project decisions
- **Members:** SWC&FRPR Commission representatives, Consultants
- **Responsibilities & Authority:** Advise the SWC&FRPR Commission, Front Range Rail Segment and Coalition, and the Project Team
- **Frequency:** Mid project or as needed

Thank You!
Questions and Answers



HDR