



COLORADO

Department of
Transportation

Front Range Rail Demand Forecasting
Passenger Rail Commission, June 14, 2019
Erik Sabina, P.E.



CDOT's Travel Forecasting Model

- Completed and brought into production this year
- Already in use on several projects (e.g., Statewide Transportation Plan)
- Modern “Activity-based” model
 - One of the first in the US at the state level
 - Consistent with widespread practice in large metropolitan regions
 - Adapted from DRCOG’s “Focus” model



What does this model do?

- Travel on a typical weekday
 - Complete daily travel for each person
 - What trips?
 - For what purpose?
 - To where?
 - What time of day?
 - What mode?
 - What route?
- Developing add-ons for other travel markets
 - Weekends
 - Special events (e.g., major sporting events)
 - DEN Airport improvements



What does this model do?

- Enhancing transit elements
 - Further analysis of Colorado ridership data
 - Comparison to analogous service in other states
 - Further analysis of “big data” showing Front Range travel patterns

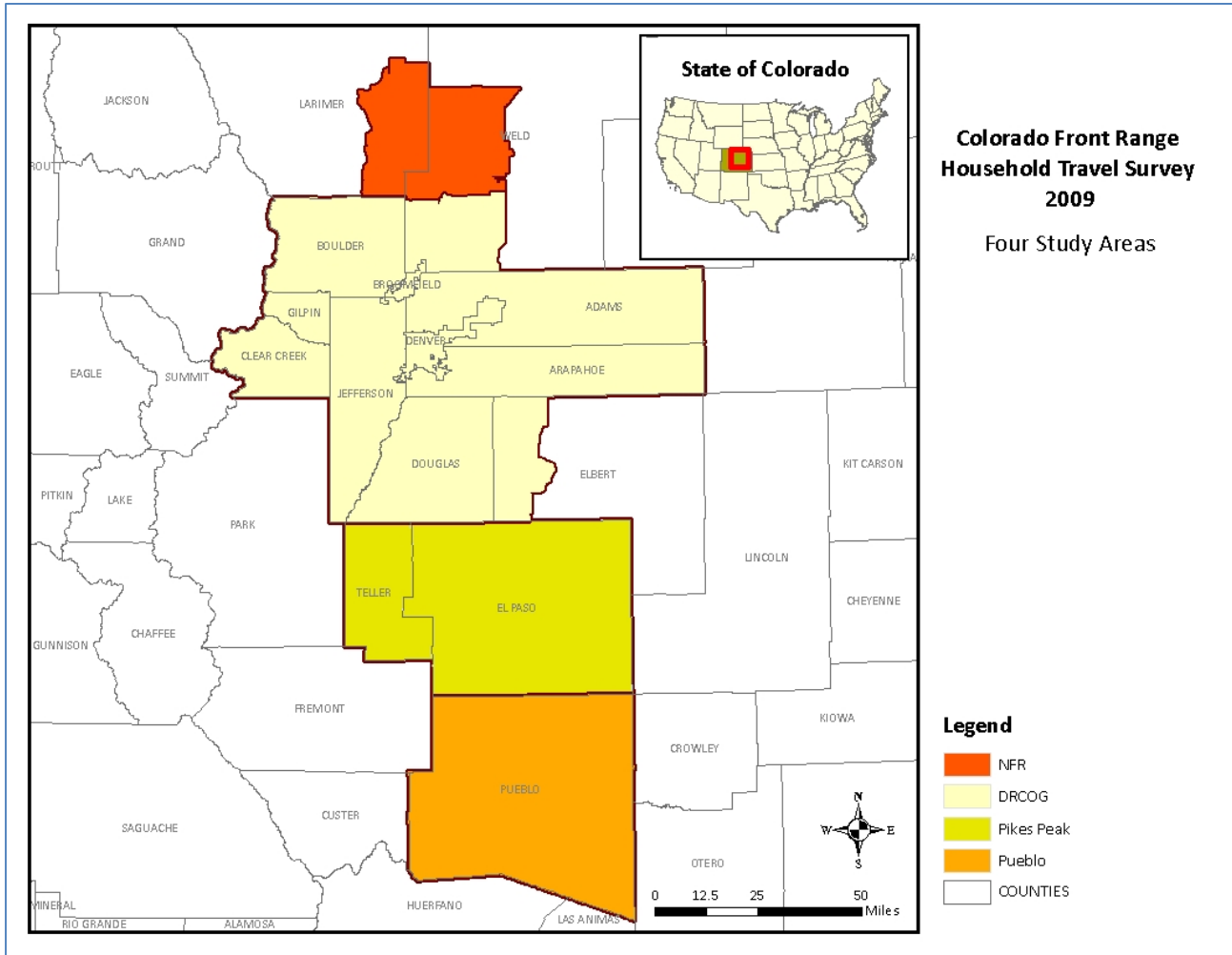


A few other points

- Model was built from a large survey of Front Range residents
 - 12,000 HH, 30,000 people.
 - Conducted in cooperation with all Front Range MPOs
- State model built using data from Front Range MPO models
- Working closely with them as we build and operate the model



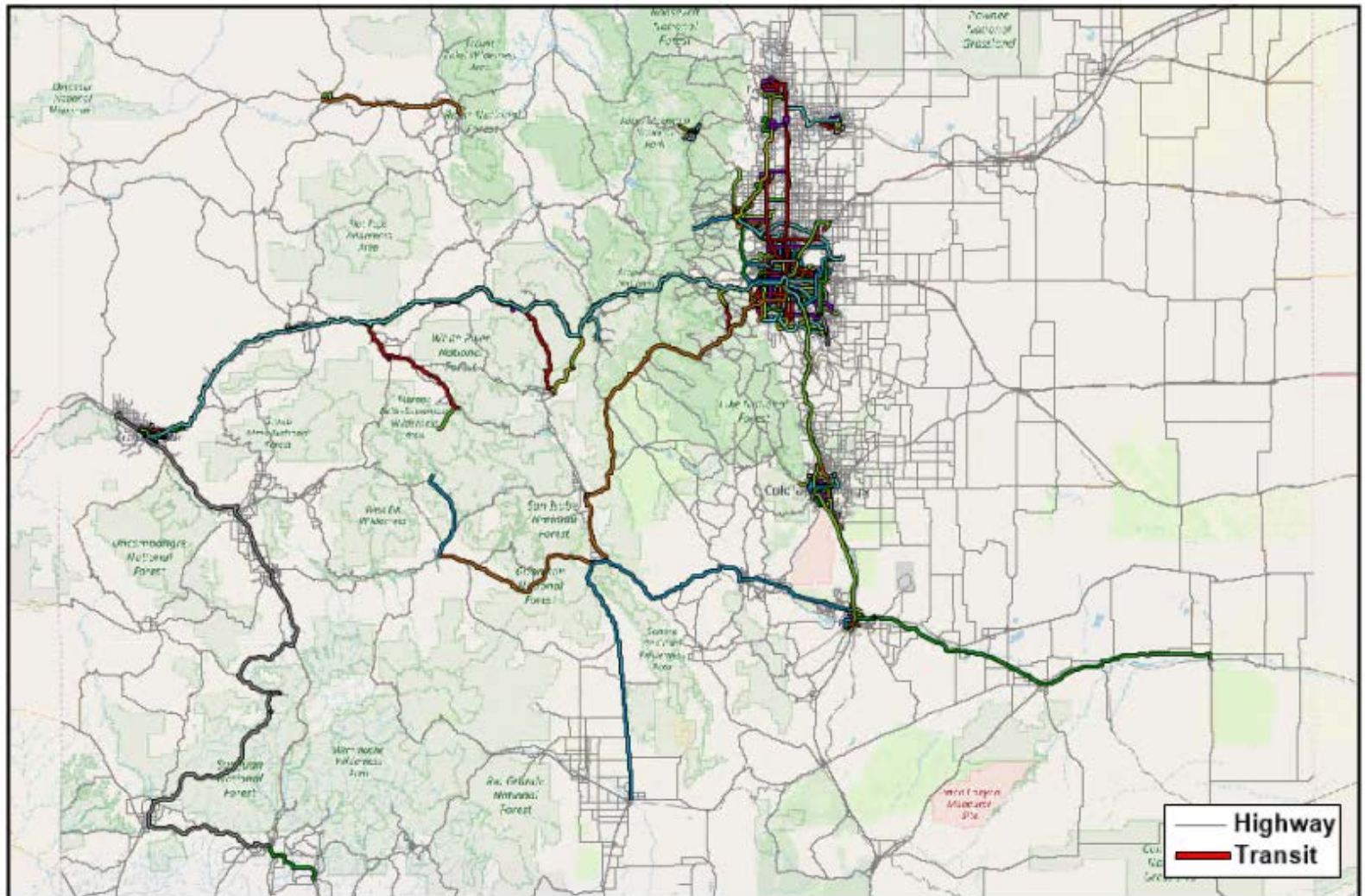
Front Range Travel Counts Survey - 2010





What do we put in the model?

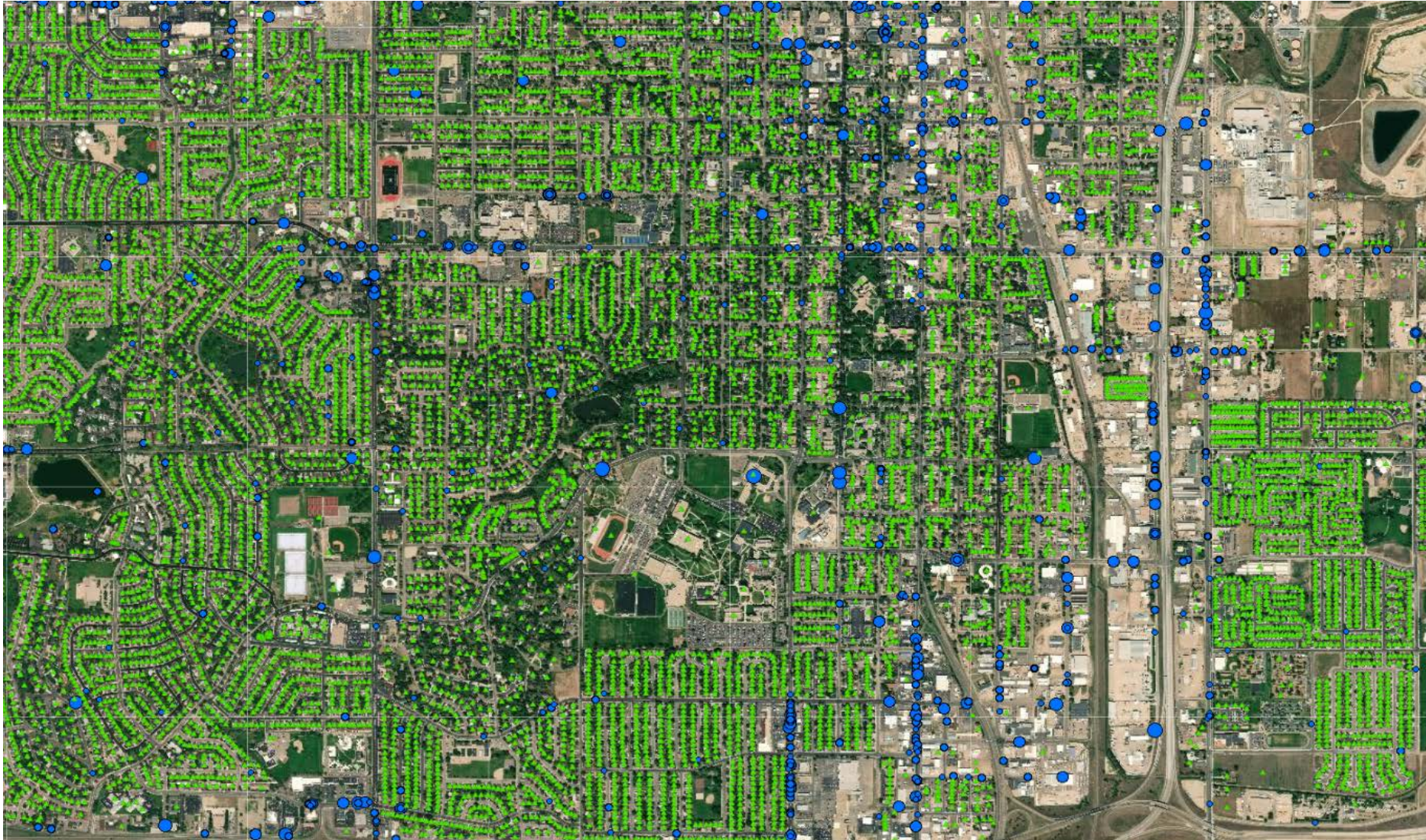
Model Highway Transit Network





What do we put in the model?

Jobs and Households





Popular Outputs

- Roadway traffic and speeds
 - For each road segment
- Transit ridership by:
 - Operator
 - Line
 - And by segment
- Origin-destination tables
 - Shows detailed travel patterns
 - Where are people coming from, and where are they going



Contact info

Erik E. Sabina, PE
Manager, Information Management Branch
Division of Transportation Development
Erik.Sabina@state.co.us
303-757-9811

Shahida Mirza
Shahida.Mirza@state.co.us
303-757-9757

Dr. Juan Robles, P.E.
Juan.Robles@state.co.us
303-512-4815