



Central 70

An Introduction to Kiewit-Meridiam Partners (KMP)

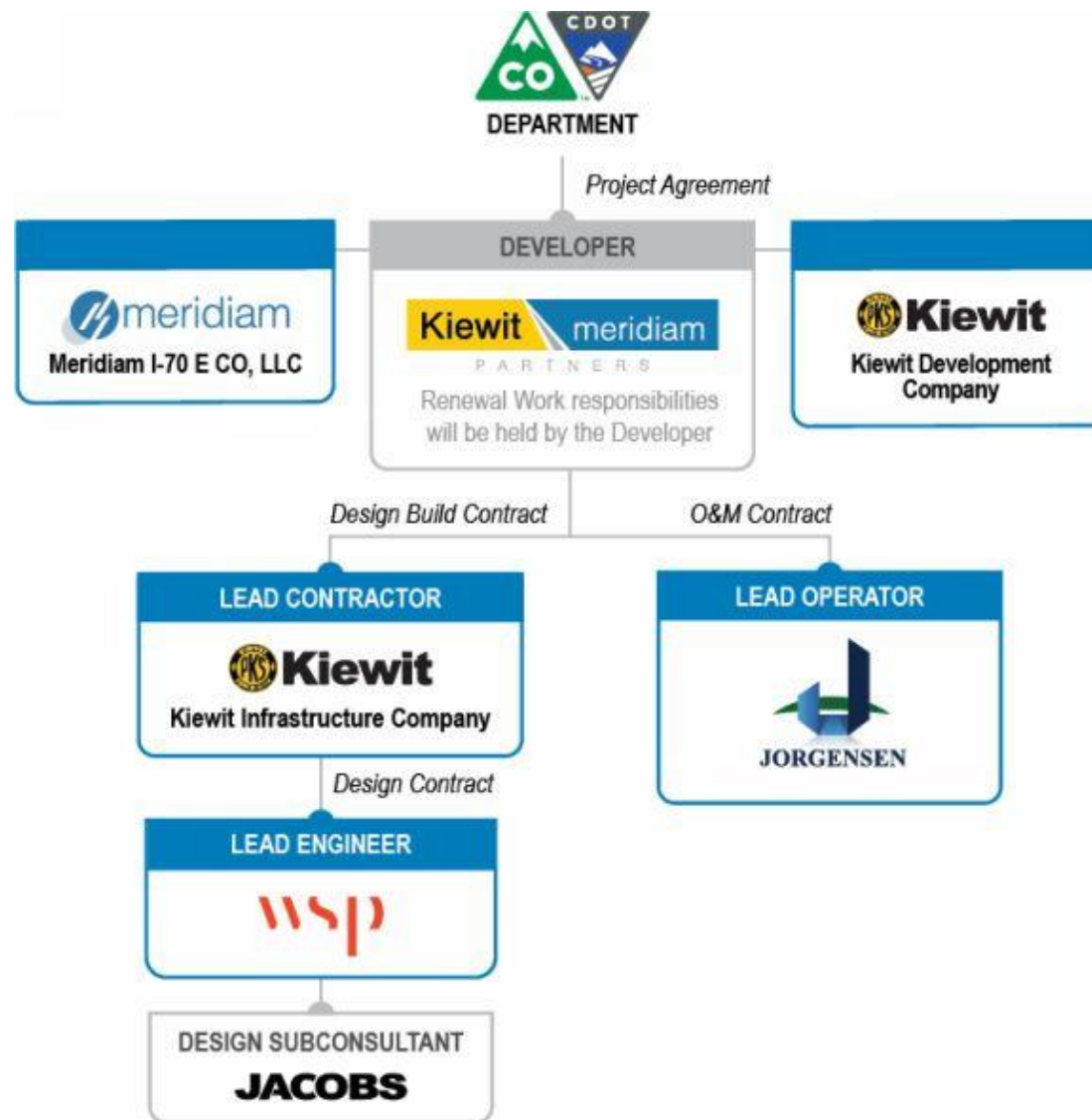


P A R T N E R S






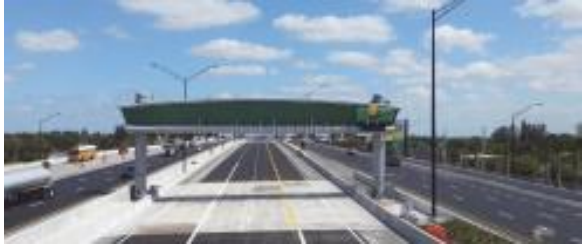
1

Organization

KMP Members and Organization



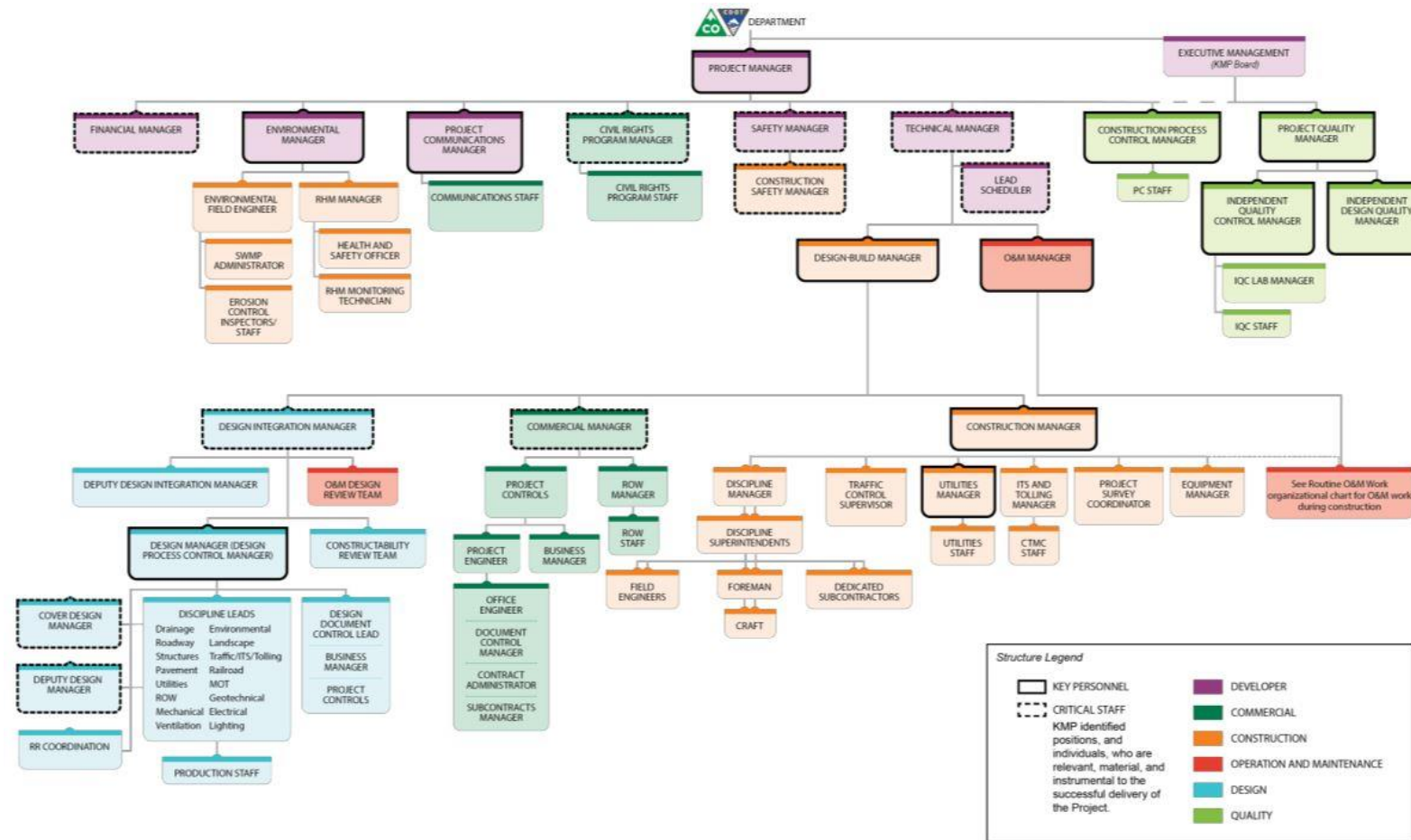
KMP Members and Organization

	Entity	Project Role	Entity Overview	Representative Projects
Equity Sponsors		<ul style="list-style-type: none"> Project Leadership / Oversight Equity Investment Renewal work 	<p>Meridiam</p> <ul style="list-style-type: none"> Leading international equity investment firm that has achieved financial close on more than 56 projects globally with a total project value of more than \$50 billion <p>Kiewit Development</p> <ul style="list-style-type: none"> Leading infrastructure developer and investor in North America staffed with over 35 professionals is one of the largest teams dedicated to the North American P3 market 	 <p>New Terminal B</p> <p>LaGuardia Airport Terminal B Replacement (NY Meridiam)</p>
Construction Contractor		<ul style="list-style-type: none"> Construction (fixed-price, date-certain basis) Ensure all systems fully functional 	<ul style="list-style-type: none"> A leading North American construction and engineering organization that, over the past 10 years, has constructed more than 1,100 transportation projects totaling more than \$30 billion in contract revenue Capabilities are reinforced by one of the largest privately owned fleets of construction equipment in North America 	 <p>Pecos Street Bridge Over I-70 (CO Kiewit)</p>
Maintenance Contractor		<ul style="list-style-type: none"> Routine operations and maintenance (fixed-price basis) Construction and Operations period responsibilities 	<ul style="list-style-type: none"> Operates in 26 states on contracts for routine and preventive maintenance activities for highways, toll roads, facilities, airports and ports 	 <p>I-595 Corridor Roadway O&M (FL Jorgensen)</p>

Key Organizational Staff Structure

- ✓ Highly experienced local staff
- ✓ Team includes technical, project development, and financial experts
- ✓ Streamlined communication and partnership facilitates on time delivery
- ✓ Construction workforce opportunities for local residents

Construction Period Organization Chart

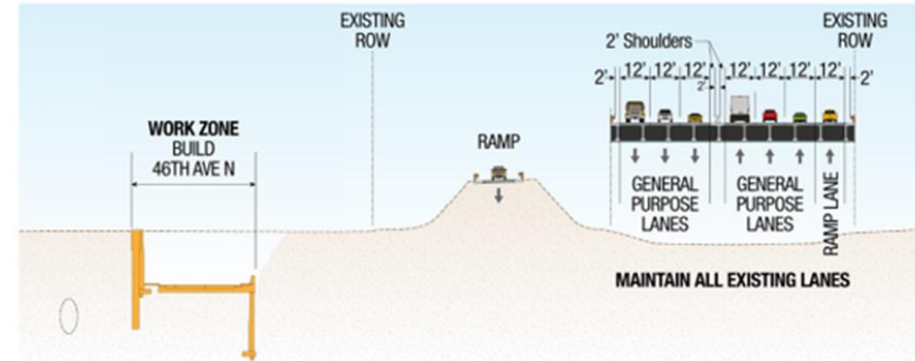


2

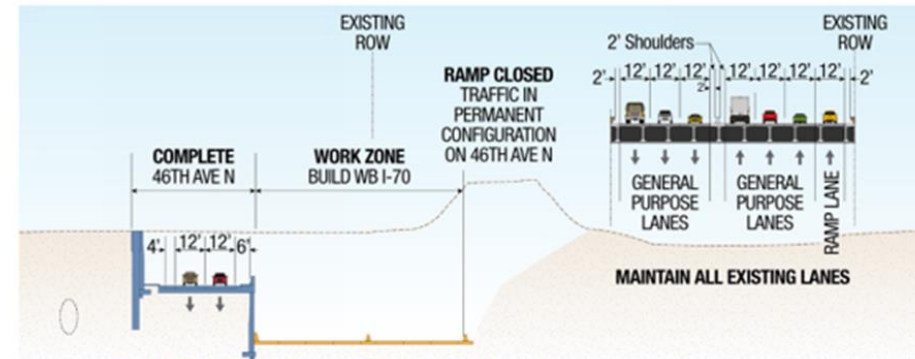
Key Technical Innovations

Key Technical Innovations

- KMP's schedule shaves one construction season off the CDOT schedule
- Compliant with permitted ramp closures
- Only two major traffic switches required in Lowered Section
- Construction will begin in 2018



Work Area West, Lowered Section, Phase 1

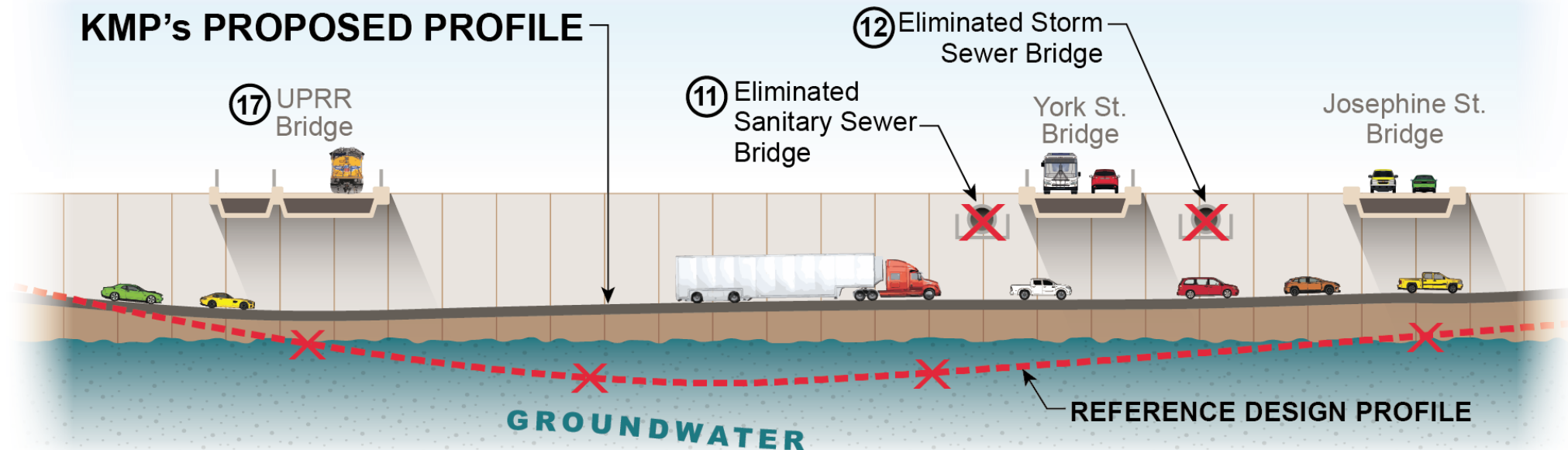


Work Area West, Lowered Section, Phase 2

Key Technical Innovations

The Team's preliminary design has eliminated the risk associated with long-term groundwater handling

- The Reference Design's roadway profile was below the groundwater table and required a permanent solution. KMP's roadway profile is above the groundwater table and does not require a permanent treatment solution.
- Temporary treatment will be required during construction. Treatment is nearly identical to Lead Contractor's previous experience at Denver Union Station



3

Community Involvement

Community Involvement

KMP is committed to enhancement and development of the local community while constructing Denver's Corridor of Opportunity.

INVESTING IN THE COMMUNITY

- \$1,000,000 in funding and in-kind services for a variety of community enhancement programs (e.g., loans or grants, food access, college scholarships, and construction education) over the 35 year Project Term

PROFESSIONALS PROVIDING THE COMMUNITY WITH PROJECT INFORMATION

- Strong relationships with local leaders. Hunter Sydnor (Communications) and Ana Mostaccero (Bilingual Liaison) are familiar with the community and its culture.

A STRONG TEAM WORKING WITH THE COMMUNITY

- Kiewit knows Denver and has maintained strong relationships with project stakeholders, major subcontractors, and DBE/ESB companies
- Our Team has already included DBE/ESBs throughout procurement
- Meridiam has a history of implementing robust community involvement plans, such as Operation 305, a WDP for the Port of Miami Tunnel Project.

