

RAMP SUMMARY

Ramp Location: North East corner, Federal Blvd, Denver CO at W. 23RD AVE
 Ramp ID#: 287C_283.457_A1
 Terrain: Rolling

ADA Information

Priority Gray: Ramp Slope between 8.3% and 9%/with Turning Space

CDOT ROW RISK: Medium - Approximate distance to ROW line = 9.5 feet

Location Information

City:	Denver
County:	Denver
CDOT Route Number:	287C
CDOT Ref Point:	283.457
Ramp Designation:	A1
Functional Classification:	Principal Arterial - Other
Latitude:	39.75129466
Longitude:	-105.0250738

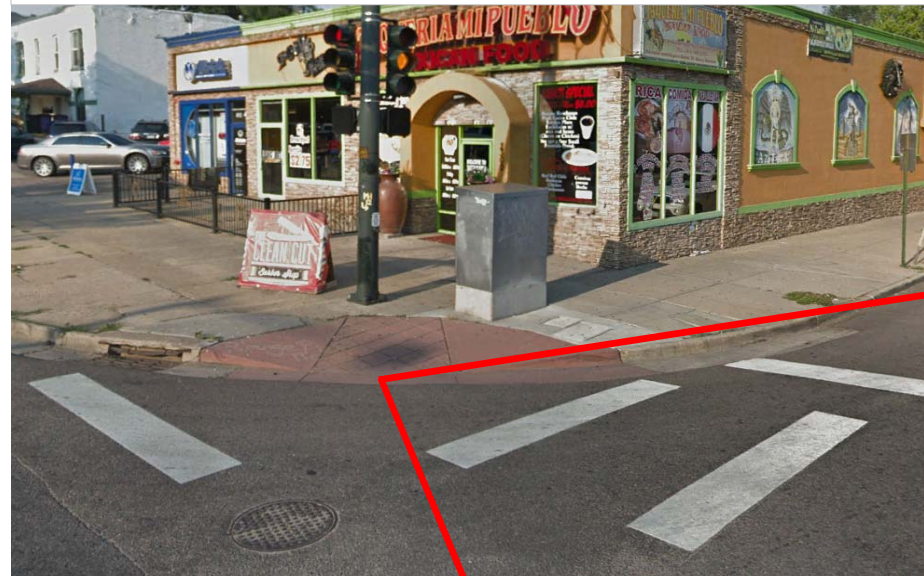
Existing Ramp Location

Running Slope:	8.70%
Cross Slope:	6.30%
Wing Slope:	17.30%
Ramp Width:	4.08 ft
Detectable Warning:	No
Turning Space:	Yes
Flush:	Yes
Inspection Date:	11/13/2013
Estimated ROW Distance:	9.54
Estimated Distance Private ROW:	9.54

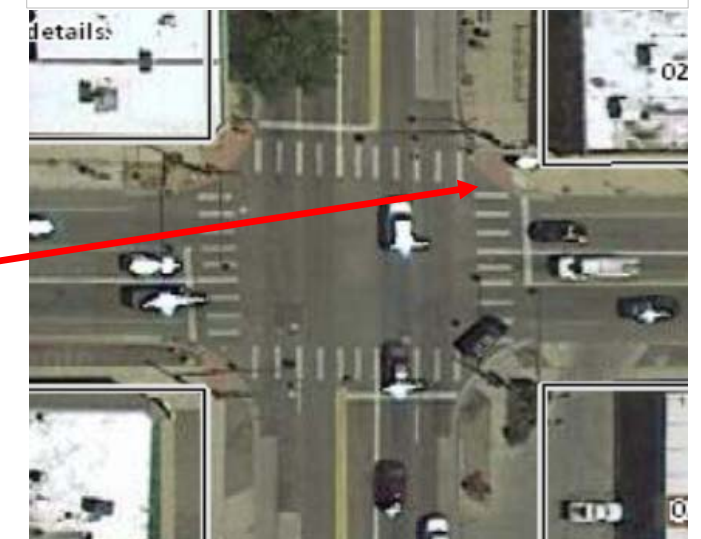
OTHER CHARACTERISTICS

- Has Narrow Sidewalk: Yes
- Has Landscape: No
- Has Fire Hydrant: No
- Has Sign Post: No
- Has Utility Pole: No
- Has Signal Pole: Yes
- Has Cabinet: Yes
- Has Building: Yes
- Has Fencing: No
- Has Inlet: Yes
- Has Manhole: No
- Has Pull Boxes: Yes
- Apex: Yes
- Blended: No

Ramp Designation: 287C_283.457_A1



Assessor Map: Federal Blvd and W 23rd Ave



<https://www.denvergov.org/maps/map/property>



Ramp Location: Federal Blvd and W 23rd Ave

Images taken from
 Google Earth/Google Maps

