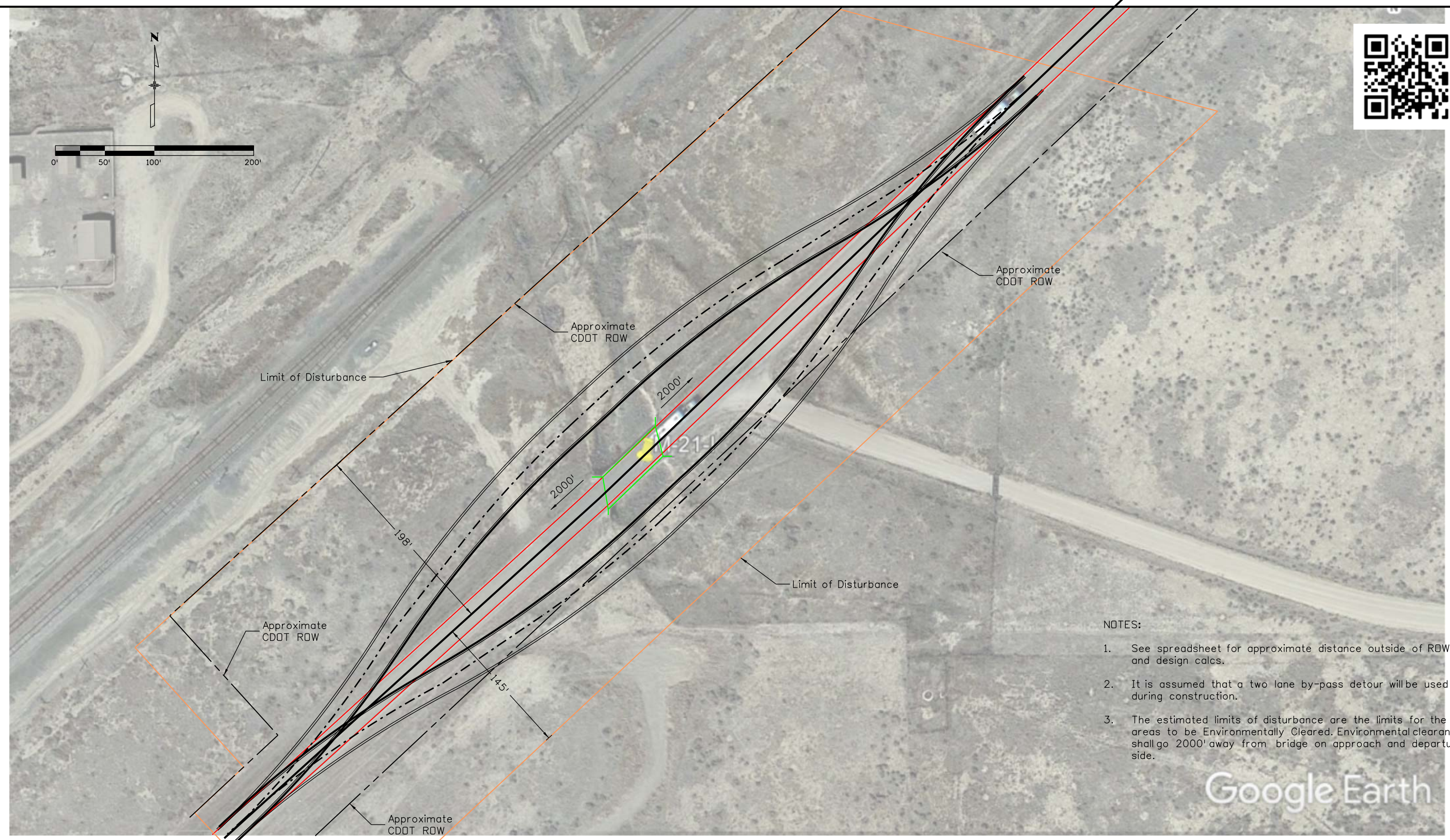


vigilpm 2:25:54 PM C:\Users\vigilpm\Documents\Projects\23558 & 23559 - Region 2 Bridge Bundle\Detours\M-21-I_PreliminaryDetour.dgn



- NOTES:
1. See spreadsheet for approximate distance outside of ROW and design calcs.
 2. It is assumed that a two lane by-pass detour will be used during construction.
 3. The estimated limits of disturbance are the limits for the areas to be Environmentally Cleared. Environmental clearance shall go 2000' away from bridge on approach and departure side.

Google Earth

Print Date: 6/1/2020
File Name: M-21-I_PreliminaryDetour.dgn
Horiz. Scale: 1:100 Vert. Scale: As Noted
Unit Information Unit Leader Initials

Sheet Revisions		
Date:	Comments	Init.

Colorado Department of Transportation

5615 Wills Blvd
Pueblo, CO 81008
Phone: 719-546-5753
FAX: 719-546-5414

Region 2 **JLB**

As Constructed
No Revisions:
Revised:
Void:

M-21-I PRELIMINARY DETOUR ENVIRONMENTAL CLEARANCE AREA			
Designer:	PMV	Structure	X-XX-XX
Detailer:	PMV	Numbers	X-XX-XX
Sheet Subset:	XXXXXXX	Subset Sheets:	XXX of XXX

Project No./Code
FBR R200-267
23559
Sheet Number XXX