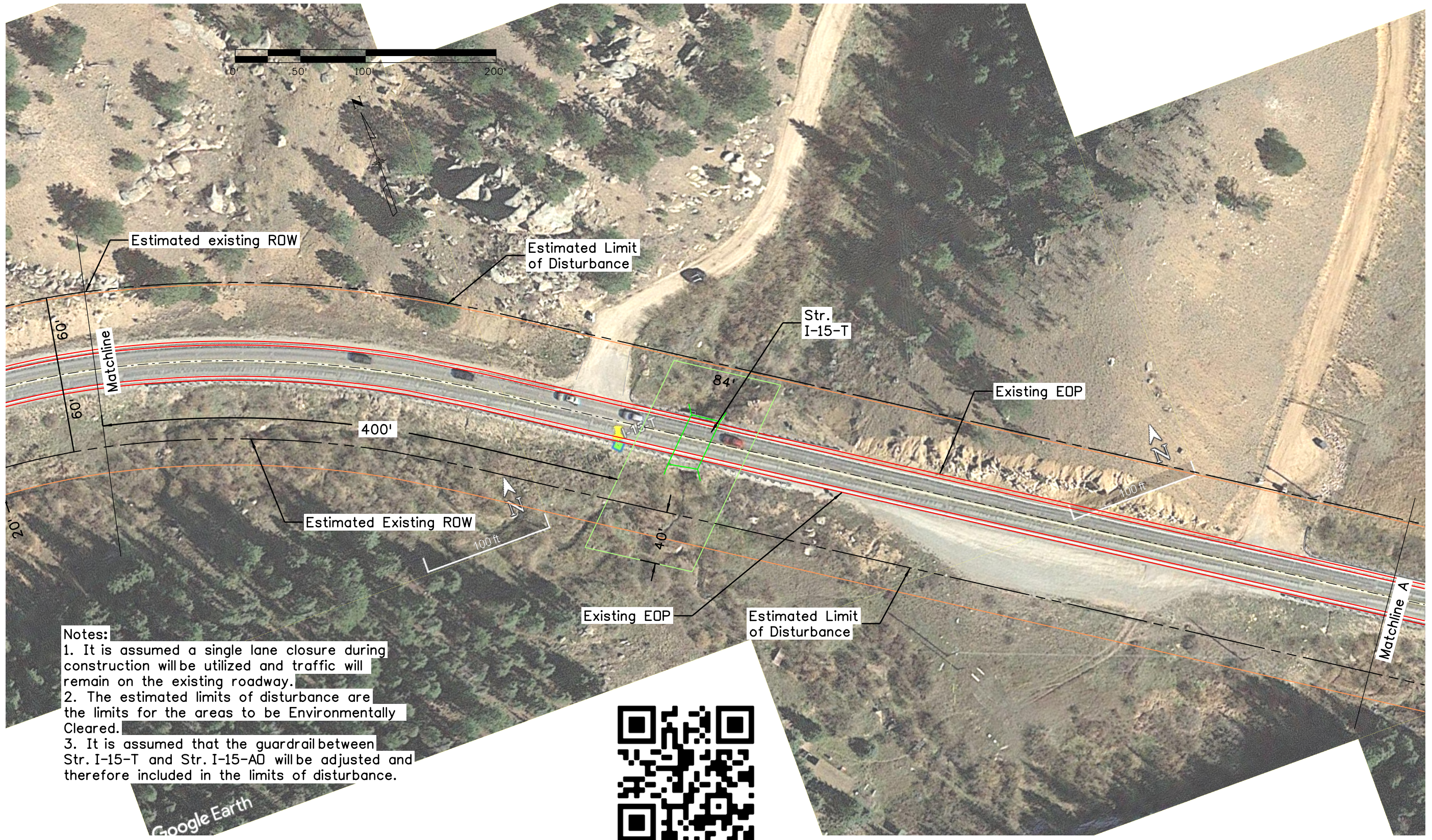


baileyc 11:35:12 AM C:\Users\baileyc\Desktop\23558\_WORKING\0\_23558\_Bridges\_Design\_Build\23558\_US24\_Aerials\_I-15-AD\_I-15-T\23558\_US24\_I-15-T\_Sheet\_02.dgn



- Notes:**
1. It is assumed a single lane closure during construction will be utilized and traffic will remain on the existing roadway.
  2. The estimated limits of disturbance are the limits for the areas to be Environmentally Cleared.
  3. It is assumed that the guardrail between Str. I-15-T and Str. I-15-AD will be adjusted and therefore included in the limits of disturbance.



Print Date: 5/4/2021	
File Name: 23558_US24_I-15-T_Sheet_02.dgn	
Horiz. Scale: 1:75	Vert. Scale: As Noted
Unit Information	Unit Leader Initials

Sheet Revisions		
Date:	Comments	Init.

Colorado Department of Transportation

5615 Wills Blvd  
Pueblo, CO 81008  
Phone: 719-546-5753  
FAX: 719-546-5414

**Region 2** **JLB**

<b>As Constructed</b>
No Revisions:
Revised:
Void:

<b>US 24 STR. I-15-T ENVIRONMENTAL CLEARANCE AREA</b>			
Designer:	CAB	Structure Numbers	I-15-T I-15-AD
Detailer:	.	Subset Sheets:	2 of 4
Sheet Subset:	.		

<b>Project No./Code</b>
FBR-R200-267
23558
Sheet Number