

Revised Index 12-3-63, J.R.W.
 (A) Revised Index 4-17-64, J.R.W.
 (B) Revised Index 7-24-64, J.R.W.

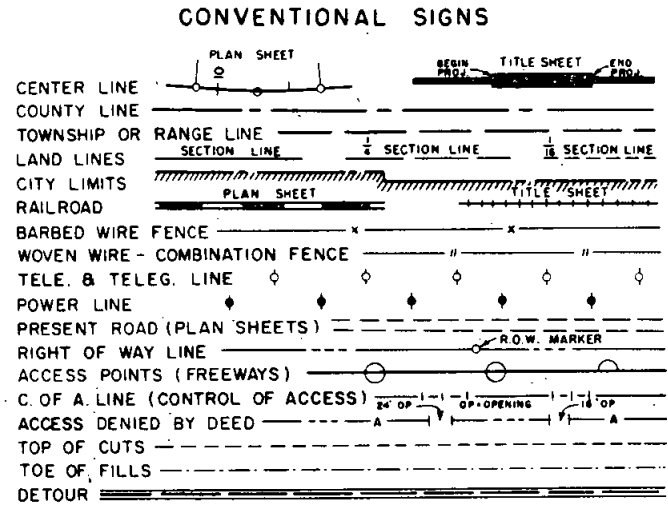
FEDERAL ROAD REGION NO.	DIVISION	PROJECT NO.	SHEET NO.
9	COLORADO	I 70-3(14) 220	1

Revised Length 6-28-63 J.R.W.
 Revised 9-16-63, J.R.W.

COLORADO DEPARTMENT OF HIGHWAYS

PLAN AND PROFILE OF PROPOSED FEDERAL AID PROJECT NO. I 70-3(14) 220 STATE HIGHWAY NO. 91 SUMMIT & CLEAR CREEK COUNTIES

- ### INDEX OF SHEETS
- SHEET NO. 1 SKETCH MAP AND TITLE PAGE
 2. DETAILS OF PIONEER TUNNEL.
 3. TYPICAL SECTION OF IMPROVEMENTS (Outside of Pioneer Tunnel)
 4. TABULATION OF LENGTH, GENERAL NOTES AND SUMMARY OF EARTHWORK QUANTITIES.
 5. SUMMARY OF APPROXIMATE QUANTITIES.
 6. DETAILS OF PARSHALL MEASURING FLUME.
 7. LOCATION OF DRILL HOLES AND RELATED DATA.
 8.-12. ALIGNMENT PLAN AND PROFILE.
 2-A. DETAILS OF PIONEER TUNNEL, WORK ORDER NO. 2885.
 SUPERELEVATION OF CURVES -
 DIVIDED HIGHWAYS (5-1-62) M-1-D-1
 IDENTIFICATION SIGNS (5-1-62) M-6-C
 (A) 2-B DETAILS OF PIONEER TUNNEL, WORK ORDER NO. 2427.
 (B) 2-C DETAILS OF PIONEER TUNNEL, WORK ORDER NO. 2436.



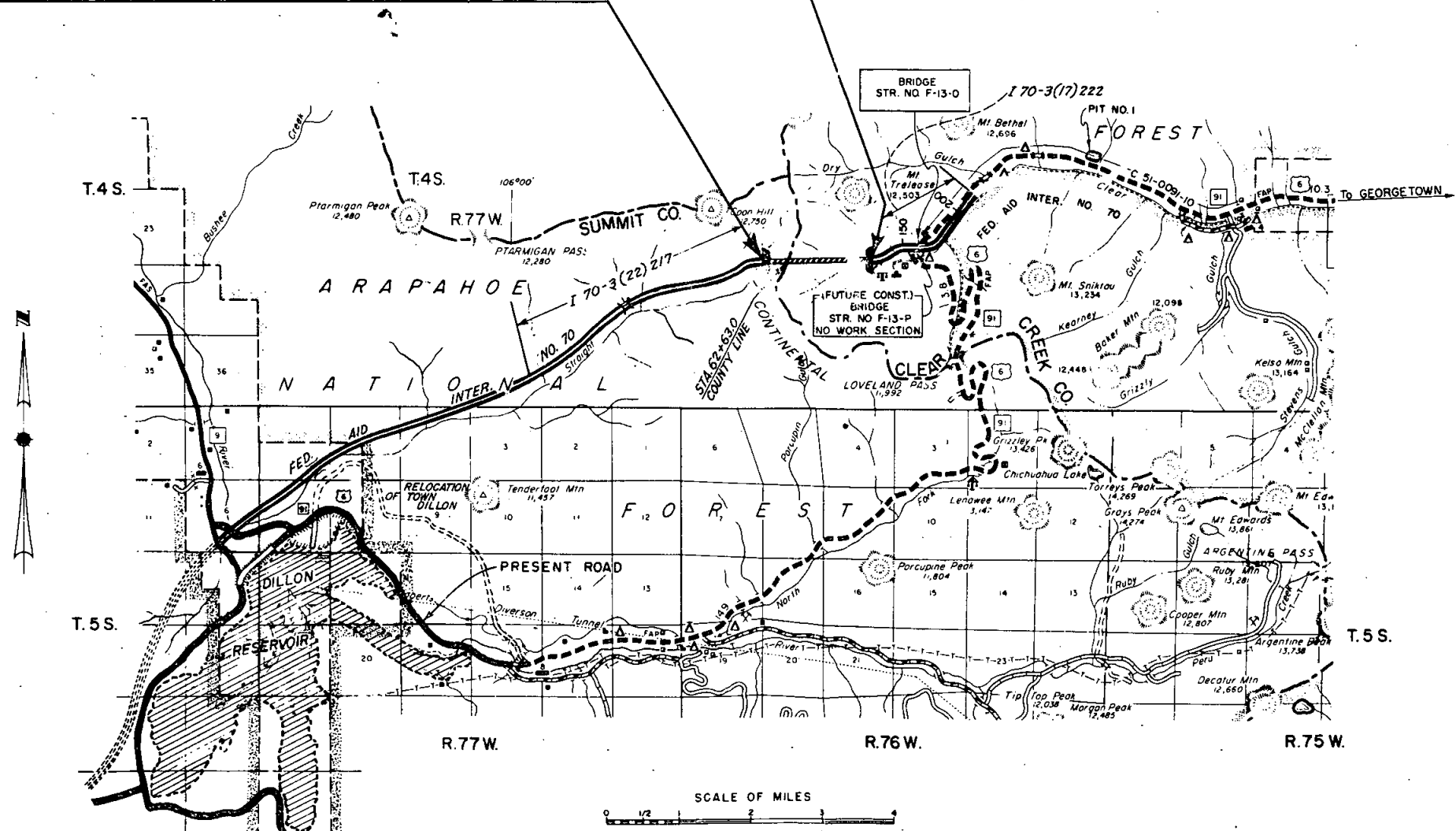
SCALES OF ORIGINAL DRAWINGS

ON PLAN,	1 IN. = 100 FT.
ON PROFILE,	1 IN. = 100 FT. HORIZONTAL
	1 IN. = 10 FT. VERTICAL

GRADE LINE ON PROFILE IS SHOWN AS GRADE OF FINISHED ROAD -
 CONSTRUCTION NET & GROSS LENGTH..... 8,282.7 Lin.Ft. = 1.569 Miles
 Summit County..... 2,363.6 Lin.Ft. = 0.448 Miles
 Clear Creek County..... 5,919.1 Lin.Ft. = 1.121 Miles

STA. 38+99.4 Ah. "X" LINE I 70-3(14) 220=
 STA. 432+23.7 Bk. END I 70-3(22) 217
 STA. 38+99.4 Ah. BEGIN PIONEER TUNNEL (47' RT.)

P.O.S.T. STA 121+00 "X" LINE I 70-3(14) 220
 50.6 FT. RT. OF P.O.S.T. STA. 121+15.6 ON I 70-3(17) 222 "F" LINE
 STA. 121± END PIONEER TUNNEL (47' RT.)



SEE SPECIAL PROVISIONS FOR NOTICE TO BIDDERS

COLORADO
DEPARTMENT OF HIGHWAYS

APPROVED:
Mark V. Matthews 6/17/63
 CHIEF ENGINEER DATE

DEPARTMENT OF COMMERCE
BUREAU OF PUBLIC ROADS

APPROVED: _____ DATE _____
 DIVISION ENGINEER

J.R.W.

TYPICAL SECTION OF IMPROVEMENTS (OUTSIDE OF PIONEER TUNNEL)

FEDERAL ROAD DIVISION NO.	DISTRICT	PROJ. NO.	SHEET NO.	TOTAL SHEETS
9	COLORADO	I 70-3(14)220	3	

Revised 9-16-63, J.R.W.

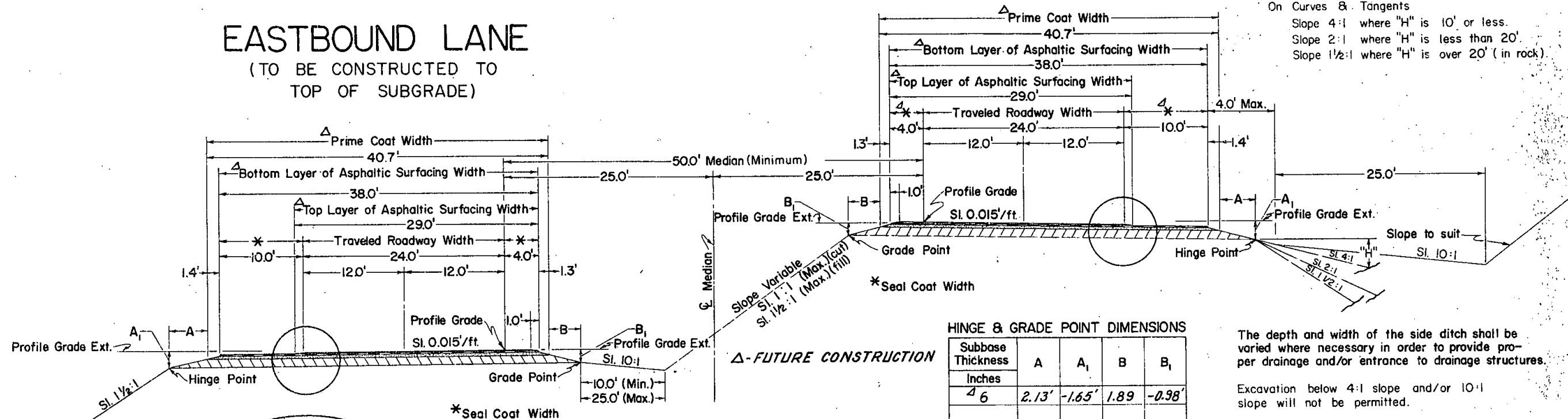
WESTBOUND LANE

NOTE:
See Standards for details of cut slope treatment, flaring and widening.

EASTBOUND LANE (TO BE CONSTRUCTED TO TOP OF SUBGRADE)

FILL SLOPES FOR DIVIDED HIGHWAYS

On Curves & Tangents
Slope 4:1 where "H" is 10' or less.
Slope 2:1 where "H" is less than 20'.
Slope 1 1/2:1 where "H" is over 20' (in rock).



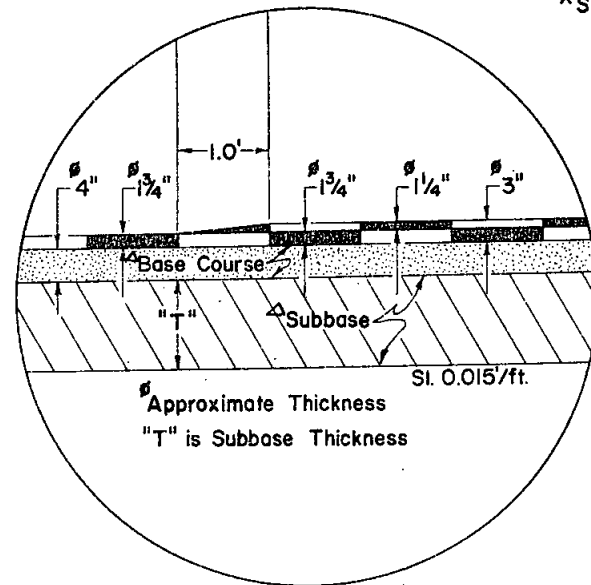
HINGE & GRADE POINT DIMENSIONS

Subbase Thickness Inches	A	A ₁	B	B ₁
4	2.13'	-1.65'	1.89	-0.38'
6				

(Stake to nearest tenth of a foot)

The depth and width of the side ditch shall be varied where necessary in order to provide proper drainage and/or entrance to drainage structures.

Excavation below 4:1 slope and/or 10:1 slope will not be permitted.



Approximate 7" compacted thickness of Gravel or Crushed Rock Surfacing shall be placed in separate courses at the following rates per 100 lin. ft. of roadway:

- Asphaltic Surfacing { Top Layer Tons
Bottom Layer Tons
- Base Course Tons

Material above the subgrade is to be constructed of Subbase Material at locations designated in Subbase material tabulation. Estimated quantities involved in this operation and thickness of material required are tabulated in the Subbase Material Plan.

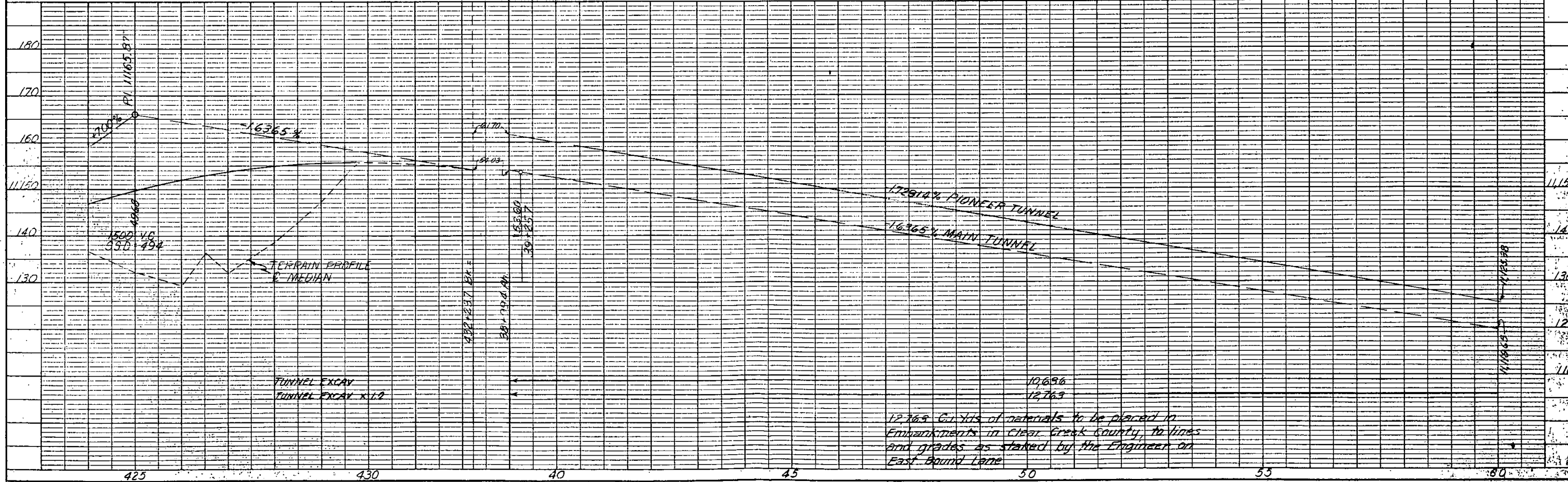
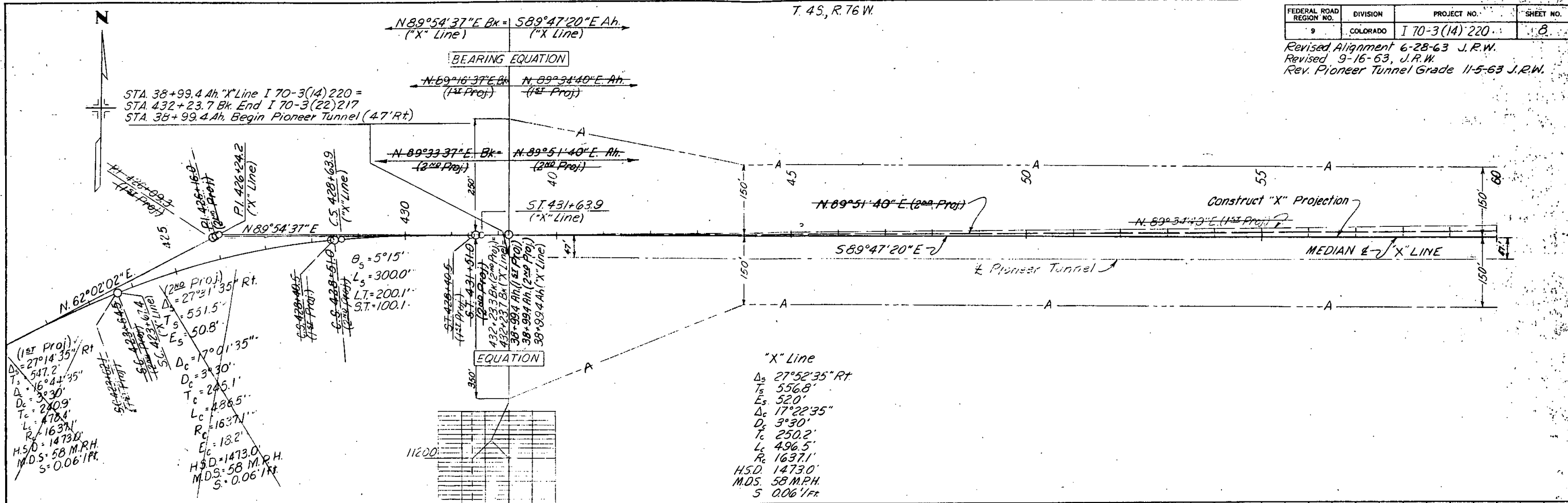
NOTE:
Bottom Layer of Asphaltic Surfacing shall be completed for full width before Top Layer of Asphaltic Surfacing is placed. Paving joints in Top Layer will overlap min. 1 ft. over joints in Bottom Layer.

FEDERAL ROAD REGION NO.	DIVISION	PROJECT NO.	SHEET NO.
9	COLORADO	I 70-3(14) 220	8

Revised Alignment 6-28-63 J.R.W.
 Revised 9-16-63, J.R.W.
 Rev. Pioneer Tunnel Grade 11-5-63 J.R.W.

NOTE BOOK ALIGNMENT UNCHECKED
 RET. OF WAY CHECKED

NO. 11-11-63
 STRUCTURE CONTRACT NO. 11-11-63



12.763 Cu Yds of materials to be placed in Embankments in Clear Creek County, to lines and grades as stated by the Engineer on East Bound Lane

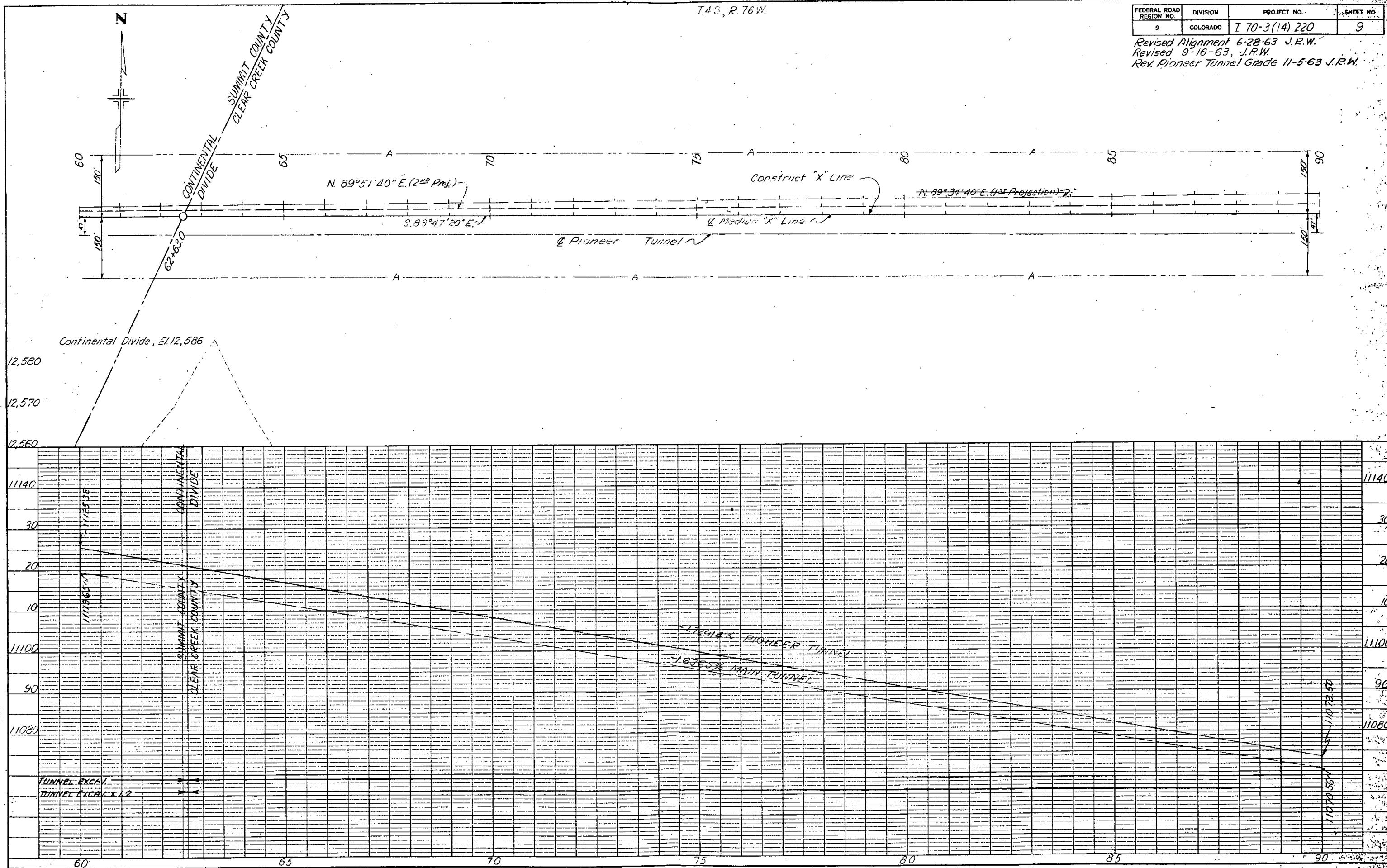
T.4 S., R.76 W.

FEDERAL ROAD REGION NO.	DIVISION	PROJECT NO.	SHEET NO.
9	COLORADO	I 70-3(14) 220	9

Revised Alignment 6-28-63 J.R.W.
 Revised 9-16-63, J.R.W.
 Rev. Pioneer Tunnel Grade 11-5-63 J.R.W.

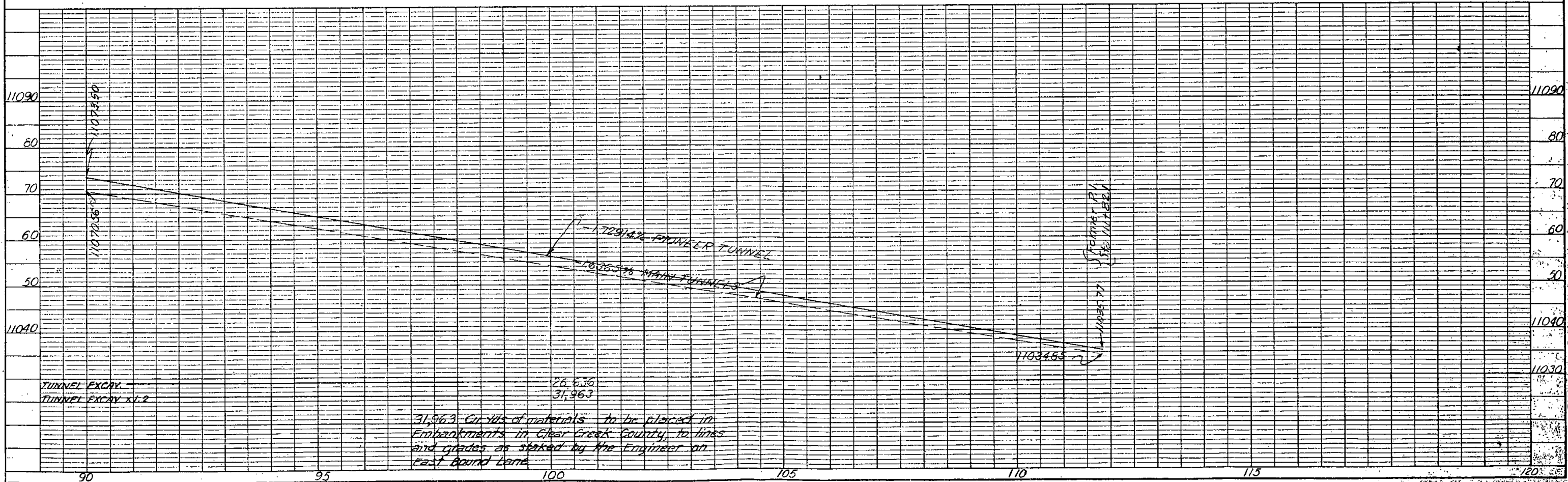
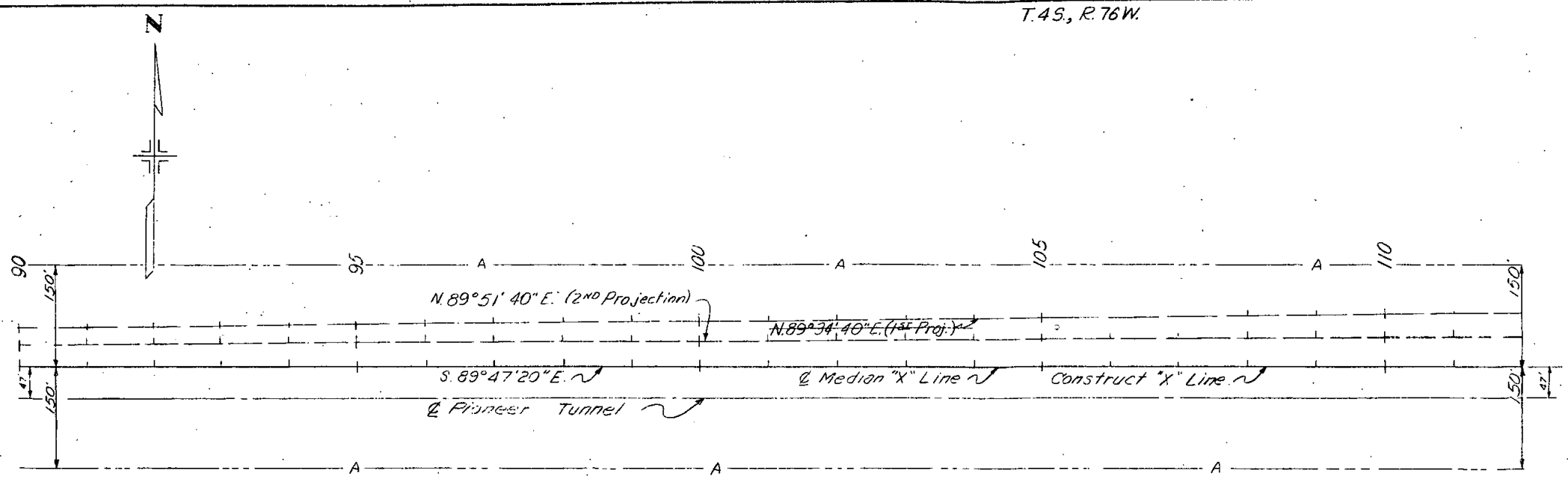
NOTE BOOK NO. 100-100-100-100
 CHECKED BY: J.R.W.
 DATE: 11-5-63

NOTE BOOK NO. 100-100-100-100
 CHECKED BY: J.R.W.
 DATE: 11-5-63



FEDERAL ROAD REGION NO.	DIVISION	PROJECT NO.	SHEET NO.
9	COLORADO	I, 70-3(14) 220	10

Rev. Alignment 6/28/63 J.R.W.
 Revised 9-16-63, J.R.W.
 Rev. Pioneer Tunnel Grade 11-5-63 J.R.W.

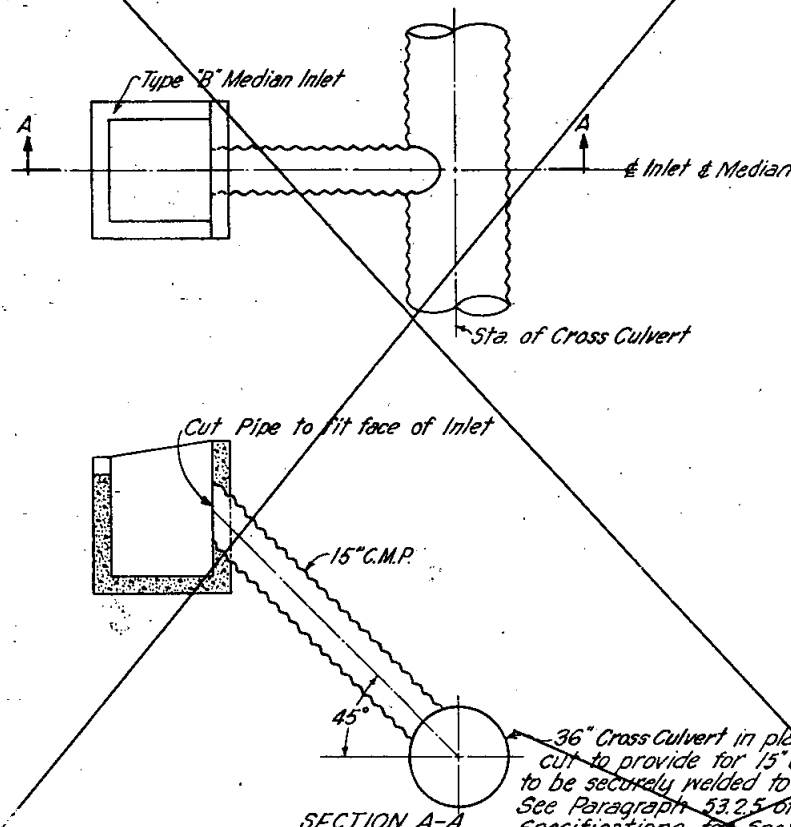


TUNNEL EXCRY.
 TUNNEL EXCAY X1.2

26,636
 31,963

31,963 Cu. Yds of materials to be placed in
 Embankments in Clear Creek County, to lines
 and grades as staked by the Engineer on
 East Bound Lane

DETAILS OF MEDIAN OUTLET DRAIN (C.M.P.)

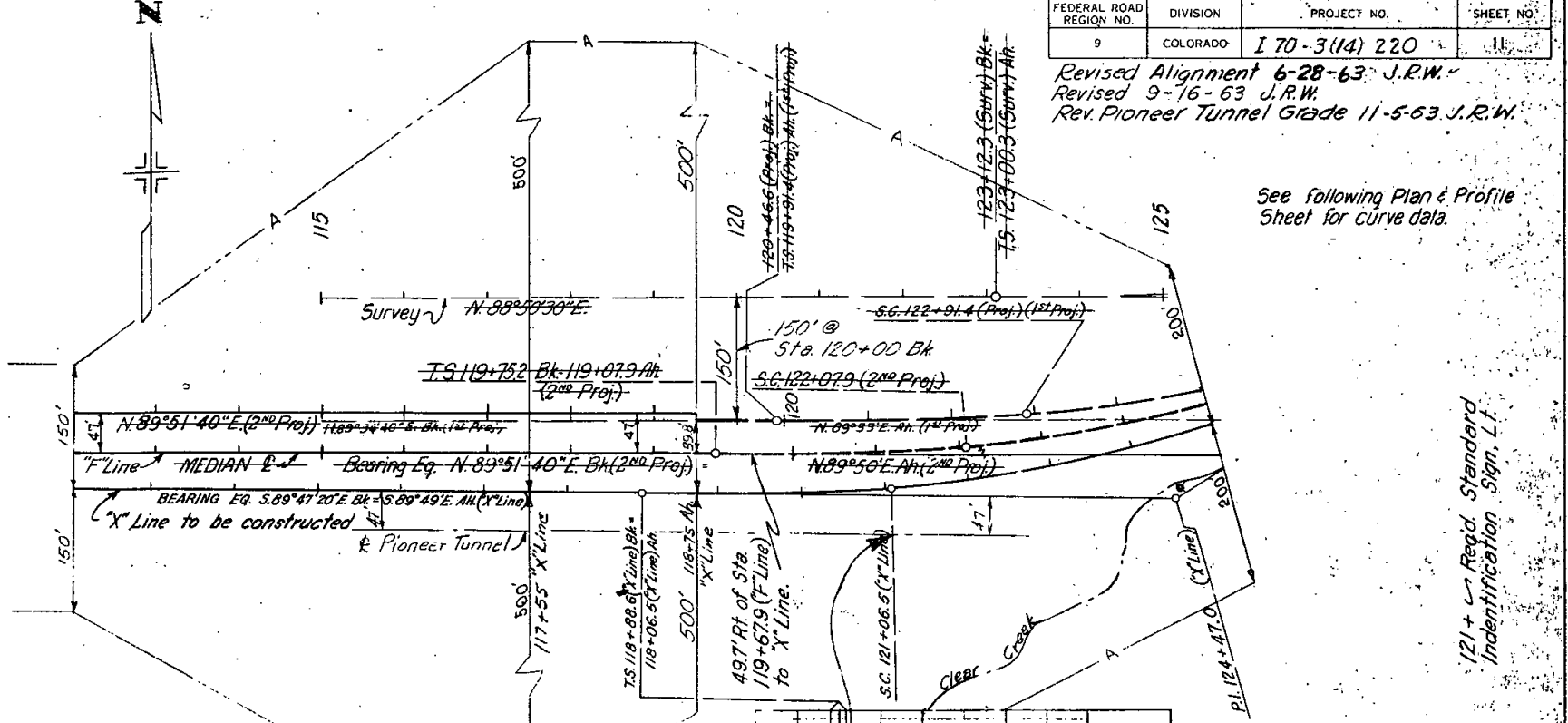


Alignment and Grades as shown are subject to modification during construction after approval by the Denver Office.

- 121 + 22 Reqd. Approach ramp to tunnel portal and construct timber tunnel entrance (Details on Sheet No. 6). Cover timber entrance with earth.
- BILL OF MATERIALS
- 2,000 C.Ys. Unreinforced Excavation
- Timber for entrance included in Logging Contract.
- 121 + 20 Reqd. Parshall Measuring Flume and 15" x 20" C.M.P. Culvert (Details on Sheet No. 6) and water level recorder.
- BILL OF MATERIALS
- 1- Parshall Measuring Flume.
- 1- Water Level Recorder.
- 20 Lin. Ft. 15" Corrugated Metal Culvert Pipe

36" Cross-Culvert in place to be field cut to provide for 15" C.M.P. which is to be securely welded to 36" C.M.P. See Paragraph 53.2.5 of Standard Specifications for Spelter Coat. All cost of welding and Spelter Coat are to be included in unit price bid for 15" C.M.P.

FORCE ACCOUNT
Construct timber housing for measuring flume



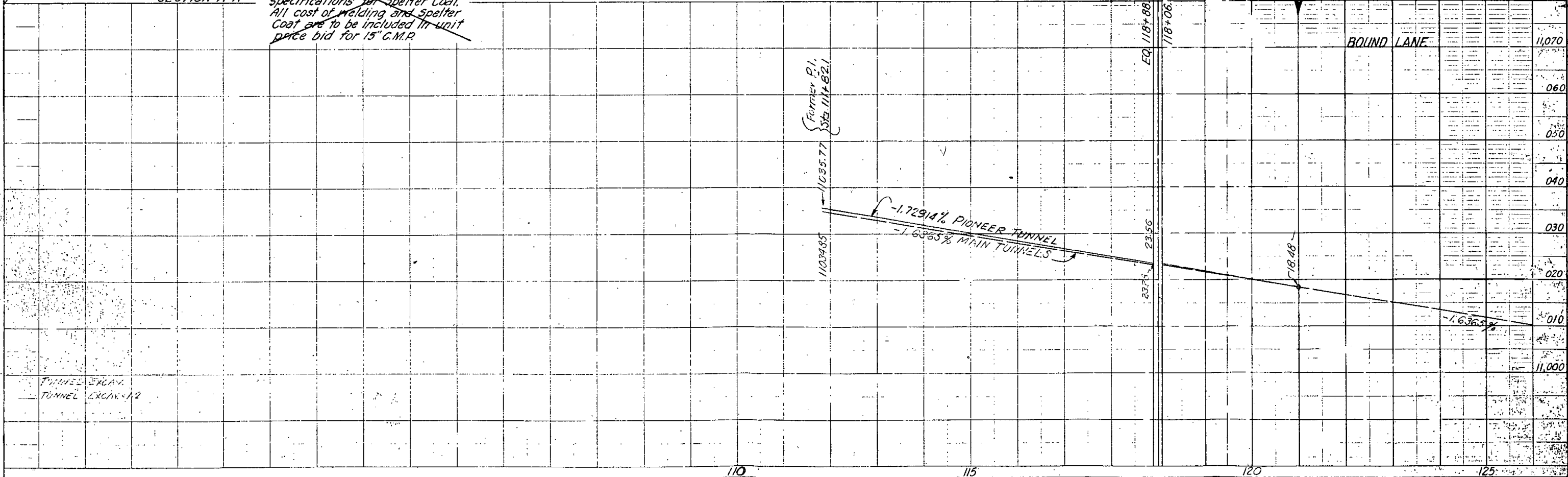
P.O.S.T. STA. 121+00.0 "X" Line I 70-3(14) 220 506 Ft. Rt. of P.O.S.T. STA. 121+15.6 on I 70-3(17) 222 "F" Line STA. 121 ± End Pioneer Tunnel (47' Rt.)
B.M. Elev. 11,088.29' H.&G. 1" Lt. Sta. 121+87 (Survey)

FEDERAL ROAD REGION NO.	DIVISION	PROJECT NO.	SHEET NO.
9	COLORADO	I 70-3(14) 220	11

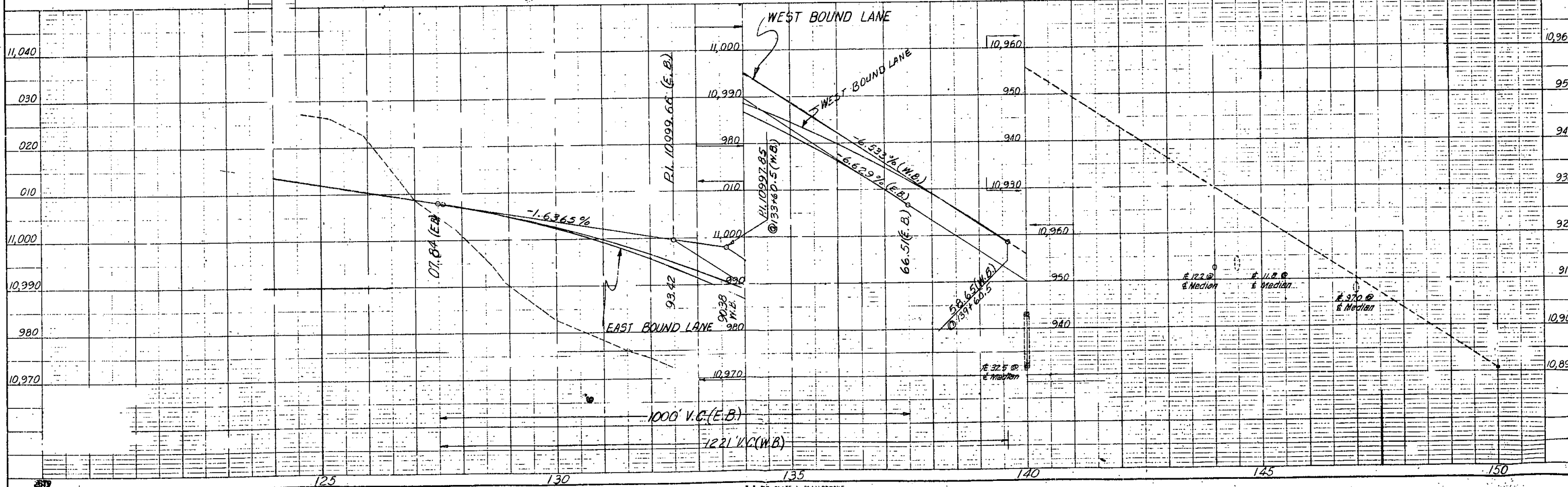
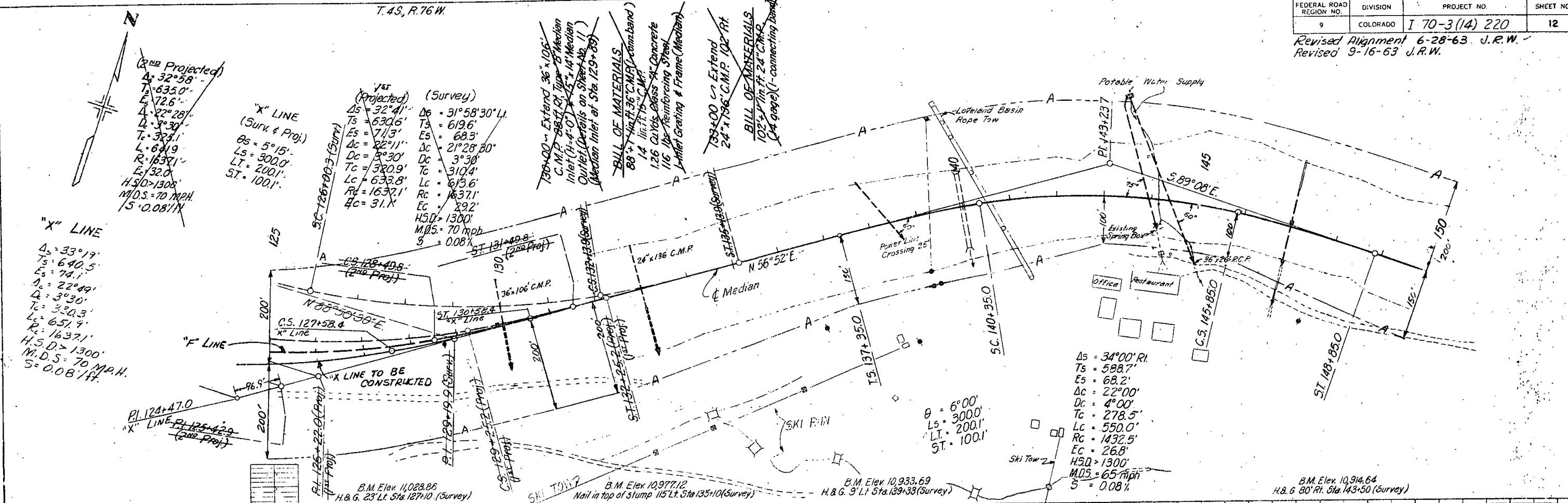
Revised Alignment 6-28-63 J.R.W.
Revised 9-16-63 J.R.W.
Rev. Pioneer Tunnel Grade 11-5-63 J.R.W.

See following Plan & Profile Sheet for curve data.

121 + 2 Reqd. Standard Identification Sign, L.T.



Revised Alignment 6-28-63 J.R.W.
 Revised 9-16-63 J.R.W.



FEDERAL ROAD DISTRICT	PROJ. NO.	SHEET NO.	TOTAL SHEETS
COLORADO	I 70-3(14) 220	1	1

RIGHT OF WAY
STRAIGHT CREEK TUNNEL
 Scale 1"=300'

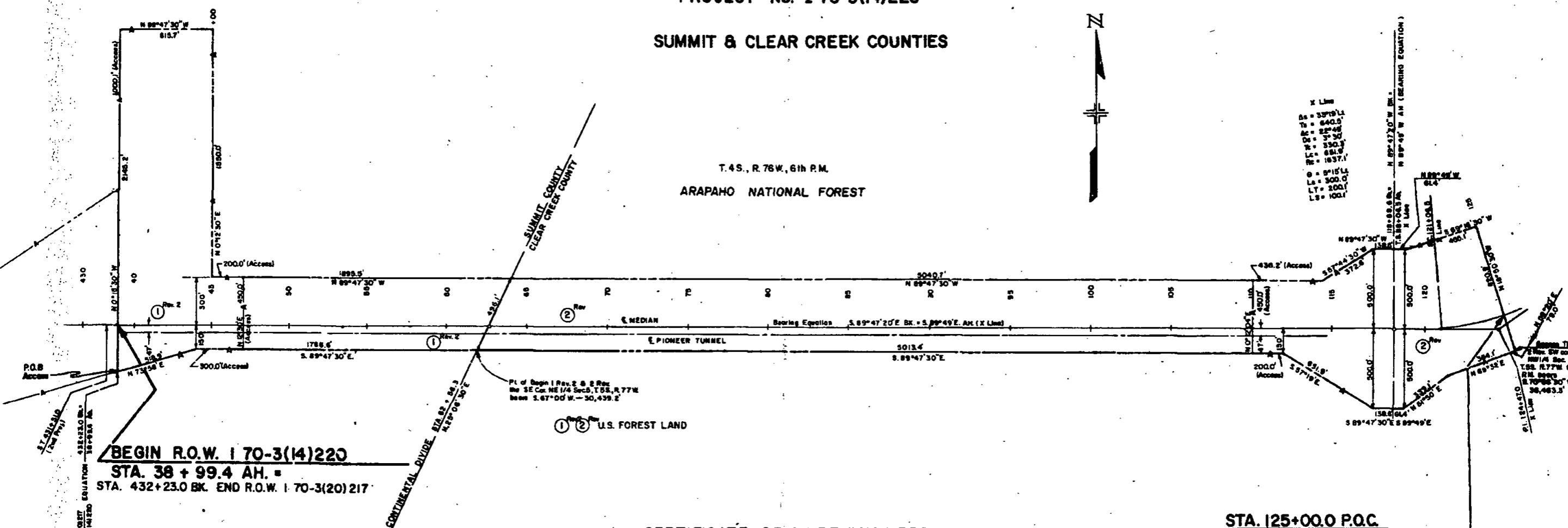
REVISIONS	
6-8-67	Rev. per I & E
7-30-68	Rev. per I & E
	on per. I & E
8-23-68	Add access easements

COLORADO DEPARTMENT OF HIGHWAYS
PROJECT NO. I 70-3(14)220

SERIAL NO. _____

SUMMIT & CLEAR CREEK COUNTIES

T. 4S., R. 76W., 6th P.M.
 ARAPAHO NATIONAL FOREST



CERTIFICATE OF CHIEF ENGINEER

I, Chas. E. Shumate of Denver, Colorado, hereby certify that this map was made from notes taken during an actual survey made by the Resident Engineer, which work to the best of my knowledge and belief is accurately represented by this map.

Denver, Colorado

Date: August 5, 1968

DEPARTMENT OF HIGHWAYS, STATE OF COLORADO

Chas. E. Shumate
 Chief Engineer