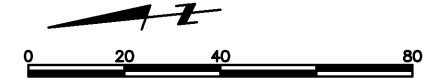
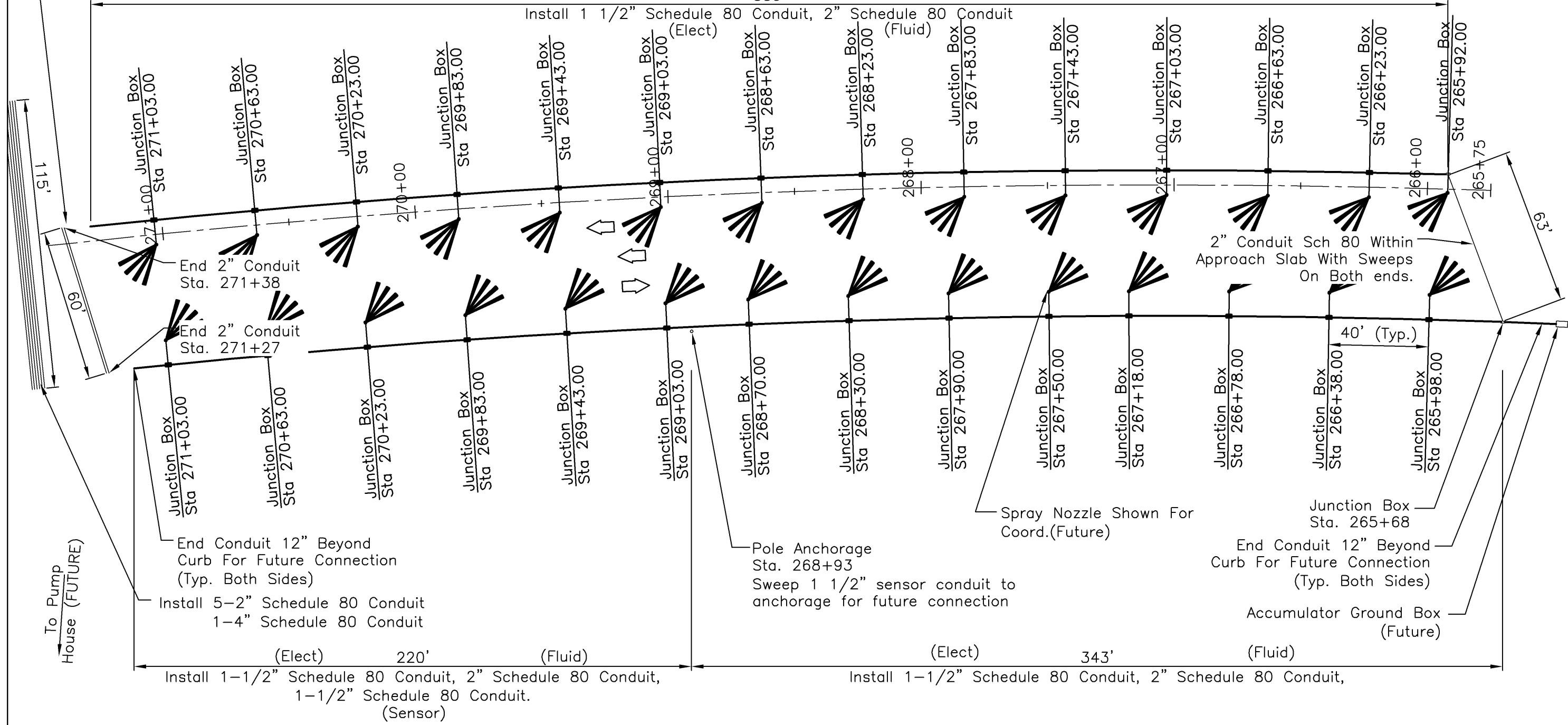


2" Conduit Sch 80, 1 1/2" Conduit Sch 80 With Sweeps On Both ends. For Future Connection To Junction Box.



559'

Install 1 1/2" Schedule 80 Conduit, 2" Schedule 80 Conduit (Elect)



Design		Detail		Quantities	
INITIAL	DATE	INITIAL	DATE	INITIAL	DATE
Designed By	JMH	07/08	RJK	07/08	XXX
Checked By	DDH	07/25	DDH	07/25	XXX
				Quantities By	XXX
				Checked By	XXX

Print Date: Wednesday, September 01, 2010	Unit Leader Initials
File Name: 0208005.08P101-BRIDGE 550.DWG	
Horiz. Scale: 1:40	Vert. Scale: As Noted
Unit Information	
Lamp, Rynearson & Associates, Inc. WWW.LRA-INC.COM	ENVIROTECH

Sheet Revisions		
Date:	Comments	Init.
(R-X)		

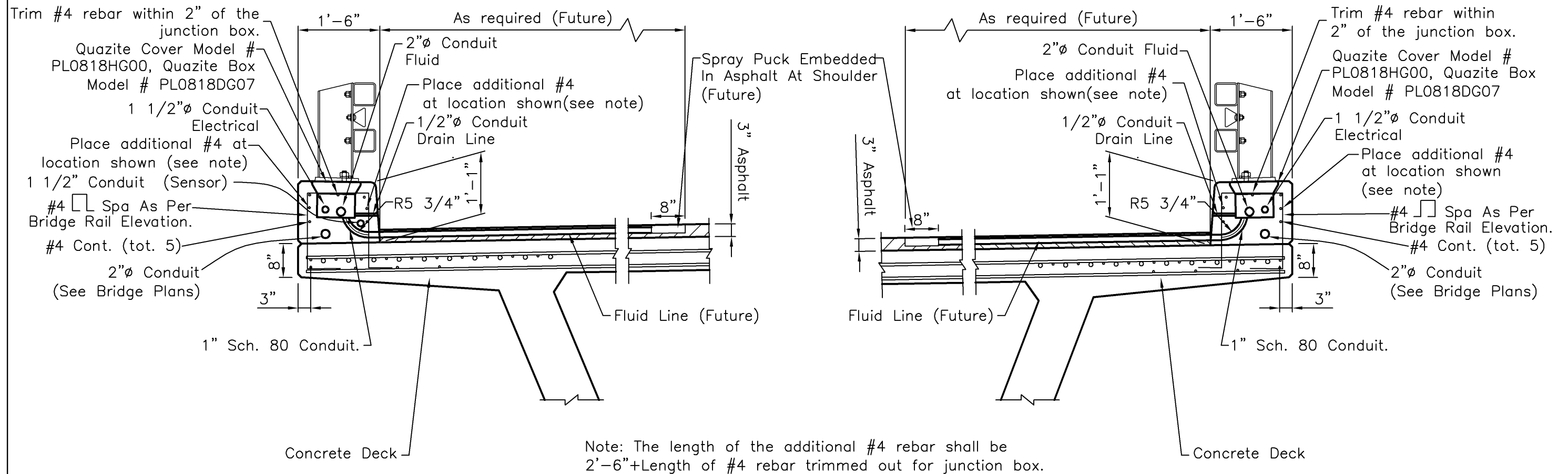
Colorado Department of Transportation
 3803 North Main Avenue
 Suite 200
 Durango, CO 81301
 Phone: 970-385-1440 FAX: 970-385-8365
 Region 5 EJA

As Constructed
No Revisions: 11/1/09
Revised:
Void:

BRIDGE LAYOUT			
Designer:	Daniel Hull	Structure	P-05-AG
Detailer:	Rick Keller	Numbers	
Sheet Subset:	Anti-Icing	Subset Sheets:	AIS2 of AIS5

Project No./Code
NH 1602-114
16042
Sheet Number

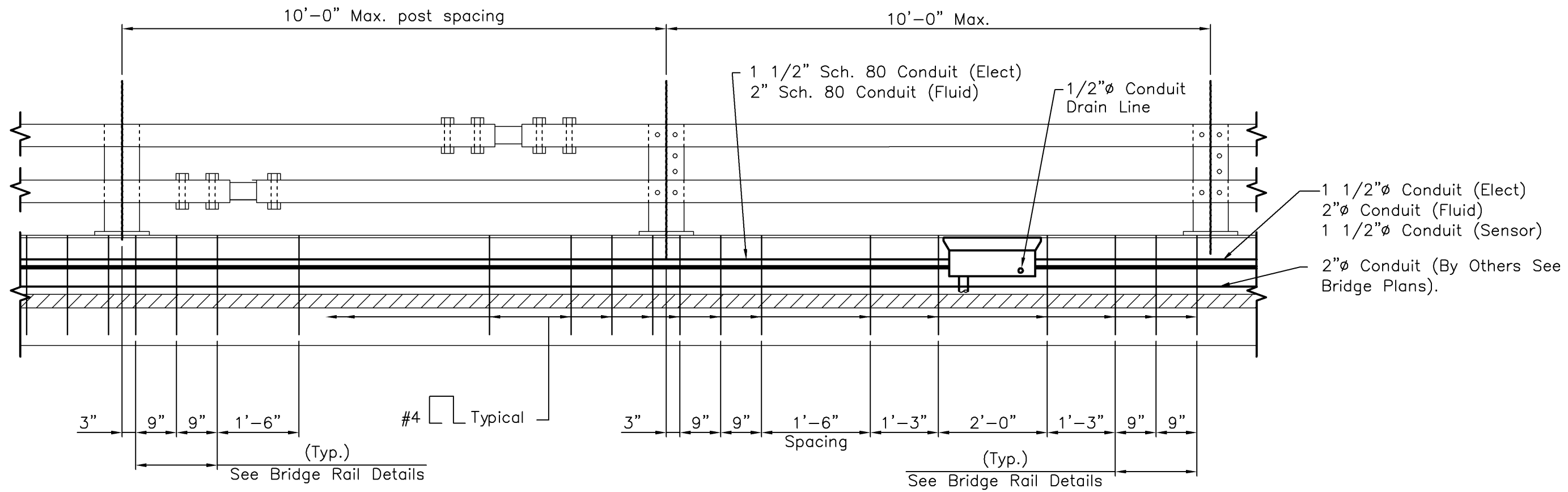
Design		Detail		Quantities	
Designed By	Checked By	INITIAL	DATE	INITIAL	DATE
JMH	DDH	JMH	07/08	DDH	07/25
Detailed By		Checked By		Checked By	
DDH		DDH		XXX	
Checked By		Checked By		Checked By	
DDH		DDH		XXX	



Note: The length of the additional #4 rebar shall be 2'-6" + Length of #4 rebar trimmed out for junction box.

BRIDGE SECTION
 Scale: 1/2" = 1'-0"

Print Date: Wednesday, September 01, 2010		Sheet Revisions			Colorado Department of Transportation		As Constructed		BRIDGE CROSS SECTION		Project No./Code	
File Name: 0208005.08P101-BRIDGE 550.DWG		Date:	Comments	Init.	3803 North Main Avenue		No Revisions: 11/1/09		NH 1602-114			
Horiz. Scale: As Noted Vert. Scale: As Noted		(R-X)			Suite 200		Revised:		Designer: Daniel Hull		Structure P-05-AG	
Unit Information Unit Leader Initials					Durango, CO 81301		Void:		Detailer: Rick Keller		Numbers	
Lamp, Ryterson & Associates, Inc. www.lra-inc.com					Phone: 970-385-1440 FAX: 970-385-8365				Sheet Subset: Anti-Icing		Subset Sheets: AIS3 of AIS5	
ENVIROTECH					Region 5 EJA				Sheet Number		16042	



BRIDGE RAIL ELEVATION

Scale" 1/2" = 1'-0"

Design		Detail		Quantities	
INITIAL	DATE	INITIAL	DATE	INITIAL	DATE
Designed By JMH	07/08	Detailed By RJK	07/08	Quantities By XXX	MM/YY
Checked By DDH	07/25	Checked By DDH	07/25	Checked By XXX	MM/YY

Print Date: Wednesday, September 01, 2010	
File Name: 0208005.08P101-BRIDGE 550.DWG	
Horiz. Scale: As Noted	Vert. Scale: As Noted
Unit Information	Unit Leader Initials

Sheet Revisions		
Date:	Comments	Init.
(R-X)		

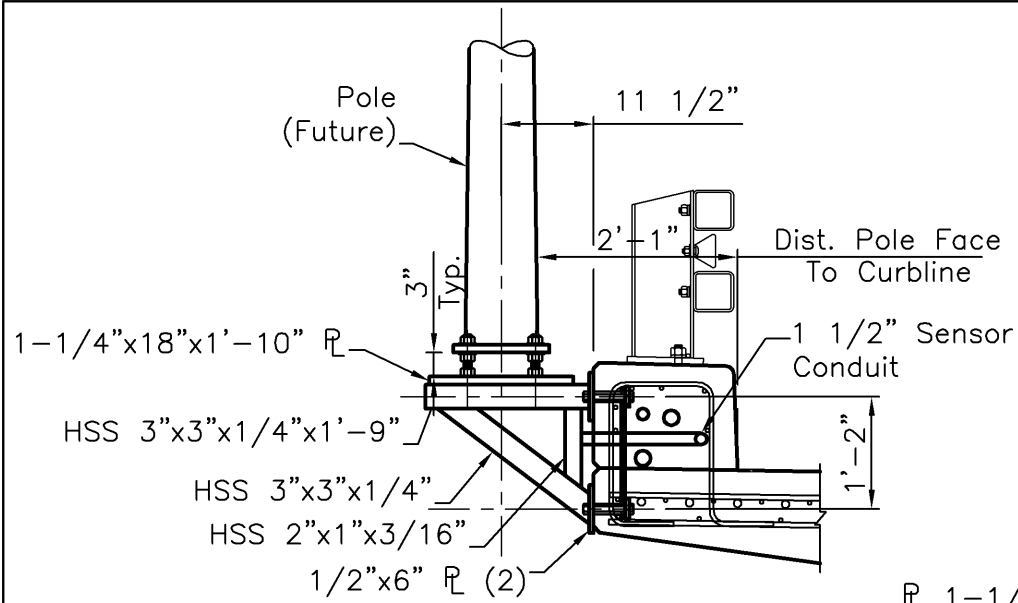
Colorado Department of Transportation
 3803 North Main Avenue
 Suite 200
 Durango, CO 81301
 Phone: 970-385-1440 FAX: 970-385-8365
 Region 5 EJA

As Constructed
No Revisions: 11/1/09
Revised:
Void:

BRIDGE RAIL ELEVATION			
Designer: Daniel Hull	Structure Numbers	P-05-AG	
Detailer: Rick Keller			
Sheet Subset: Anti-Icing	Subset Sheets: AIS4 of AIS5		

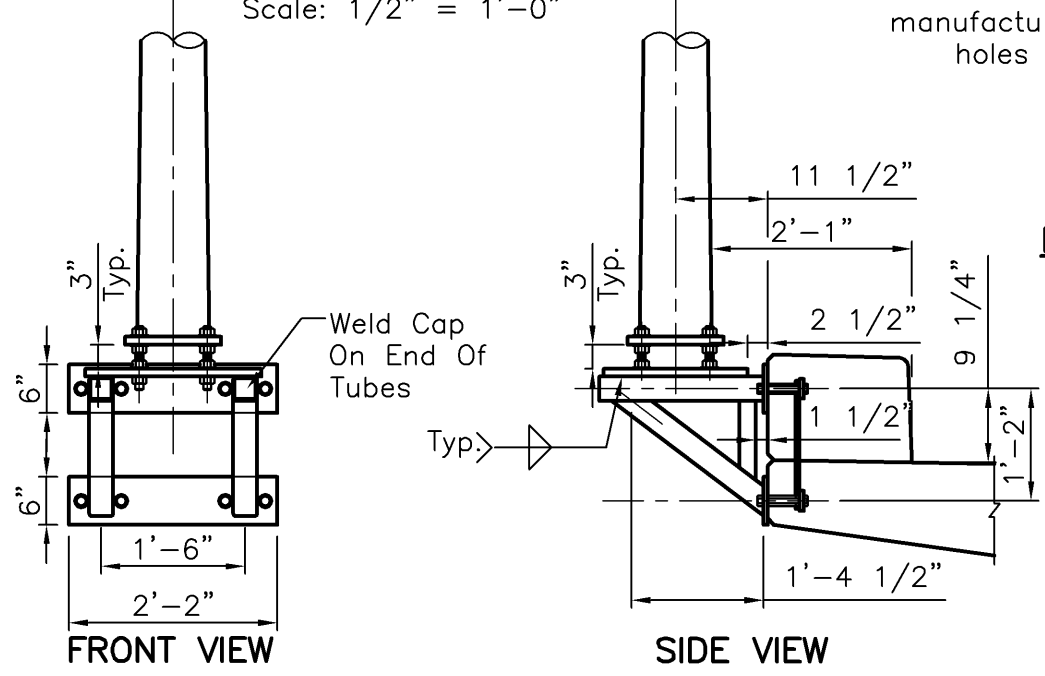
Project No./Code
NH 1602-114
16042
Sheet Number

Design	INITIAL	DATE	QUANTITIES	INITIAL	DATE
	Designed By	07/08	By	Checked By	MM/YY
Detail	INITIAL	DATE	QUANTITIES	INITIAL	DATE
	Checked By	07/25	By	Checked By	MM/YY



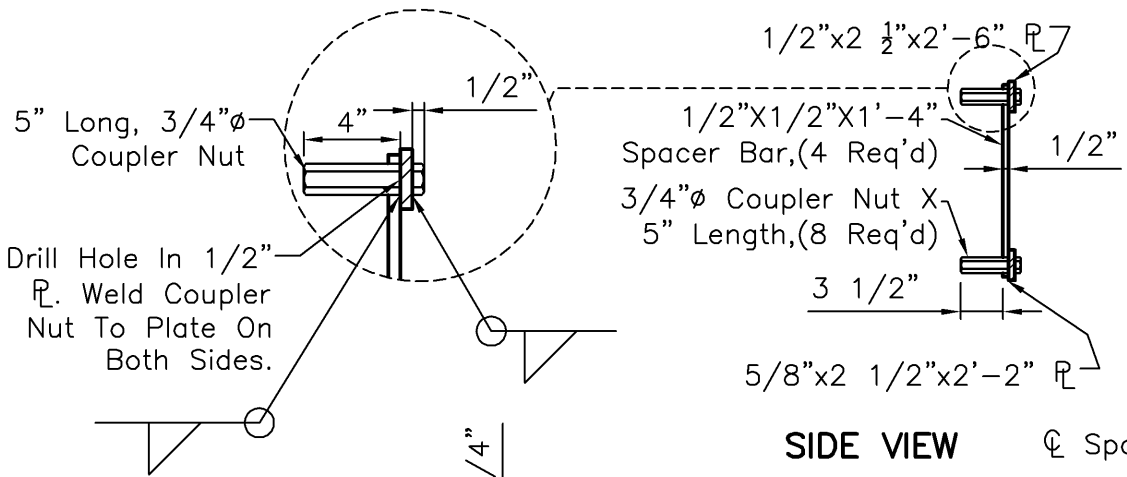
POST MOUNTING DETAIL

Scale: 1/2" = 1'-0"



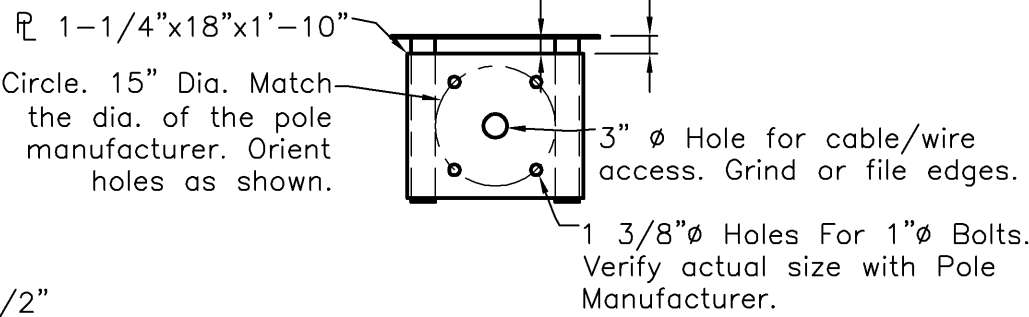
OUTSIDE MOUNTING BRACKET

Scale: 1/2" = 1'-0"



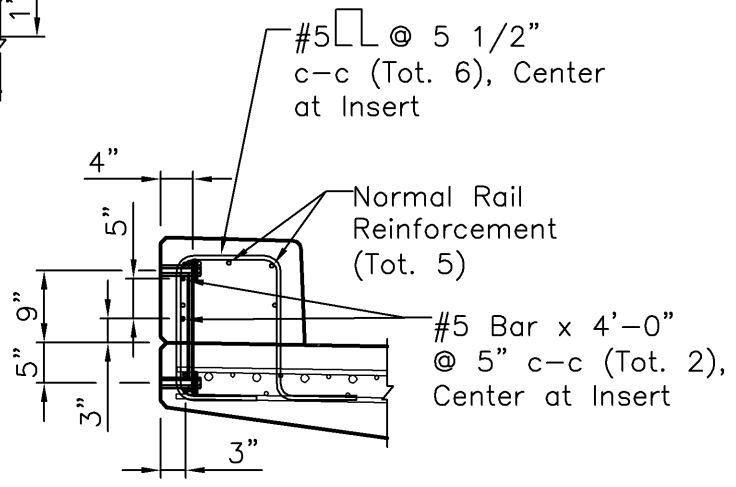
BARRIER INSERT DETAIL

Scale: 3/4" = 1'-0"



PLAN VIEW OF MOUNTING BRACKET

Scale: 1/2" = 1'-0"



BARRIER WITH BRACKET INSERTS

Scale: 1/2" = 1'-0"

STRUCTURAL STEEL AND METAL EMBEDMENTS FOR CONCRETE STRUCTURES

- Miscellaneous steel items in the structures shall be fabricated from structural steel conforming to ASTM A36 or A572. Welding shall meet requirements of AWS D1.1. The finished fabrication shall be hot-dip galvanized in accordance with ASTM A123.
- All Bolts, Nuts and Washers shall be A325, and shall be galvanized.
- All HSS Round or Rectangular Sections shall conform to ASTM A500, Grade B or C structural tubing.
- All welds shall be 1/4" minimum effective throat welds, or to the thickness of the smaller material being welded, whichever is smaller, based on 70 ksi electrode strength. HSS members may require flare bevel welds.
- 3/4" Coupler Nuts shall be 5" minimum in length, and shall meet the requirements of A325.
- Bolts to connect the Bracket to the barrier shall be 3 1/2" in length with washers.
- Pole Mounting Bracket is designed for following conditions:
 - Maximum wind velocity of 100 mph.
 - Maximum height of pole not to exceed 30 feet from top of mounting bracket plate.
 - Top of pole shall not exceed 100 feet as measured above the local ground elevation.
 - Horizontal projected area of installed equipment shall not exceed 4.5 SF mounted at 27 Feet above the top of the mounting plate (or equivalent produced moment).
 - Base of the pole shall not exceed 8" diameter, Bolt circle shall not exceed 15".

Print Date: Wednesday, September 01, 2010	File Name: 0208005.08P101-BRIDGE 550.DWG
Horiz. Scale: As Noted	Vert. Scale: As Noted
Unit Information	Unit Leader Initials
Lamp, Rynanson & Associates, Inc. WWW.LRA-INC.COM	ENVIROTECH

Sheet Revisions		
Date:	Comments	Init.
(R-X)		

Colorado Department of Transportation
 3803 North Main Avenue
 Suite 200
 Durango, CO 81301
 Phone: 970-385-1440 FAX: 970-385-8365
 Region 5 EJA

As Constructed
No Revisions: 11/1/09
Revised:
Void:

SENSOR POLE ANCHORAGE			
Designer: Daniel Hull	Structure Numbers: P-05-AG		
Detailer: Rick Keller			
Sheet Subset: Anti-Icing	Subset Sheets: AIS5 of AIS5		

Project No./Code
NH 1602-114
16042
Sheet Number