

The Latest on  
Transportation  
Planning

**YOUR**  
**TRANSPORTATION**  
**PRIORITIES**

POWERED  
BY YOU



# 10-Year Plan Annual Report

**Updated 10-Year Strategic Project Pipeline - November 2023**



Construction on US 287 in Lamar.

## Follow the Progress

CDOT is committed to maintaining transparency and accountability structures that let the public see the progress made on delivering the 10-Year Plan and how dollars are being spent.

Keep up to date with our progress by viewing our [accountability dashboard](#) on the CDOT website. Updated monthly, this dashboard represents a transparent view into the status and funding of the department's SB 10-Year Plan program of projects.

The 10-Year Plan project tables in the [10-Year Plan document](#) have also been updated to be consistent with the accountability dashboard and are included in this document for ease of reference. These tables will be refreshed quarterly to stay in sync with the accountability dashboard. Please note that the project fact sheets linked in the project tables are still in the process of being updated.

# Project Status & Highlights

CDOT has made significant progress in delivering the 10-Year Plan to catch up on critical road and bridge repairs, add travel options, relieve traffic choke points, make critical safety improvements, and bring transit to new corners of the state.

Here are a few highlights:

- CDOT has completed **54 projects from the 10-Year Plan** projects to date, with an additional 40 projects currently under construction.
- **100% of the projects in the first four years of the plan are complete or under construction**, and over half of the full 10-Year Plan is now complete or in progress.
- With progress on the 10-Year Plan well underway and more coming quickly, Coloradans should expect CDOT to continue building the connections we need to keep our state thriving.



US 550-US 160 Gulch A Bridge.

# Completed Projects

## Region 1 - Metro Denver

### Central 70 Project - Express Lane Tolling



Tolling began on the Central 70 Express Lanes on Tuesday, July 11. The Express Lanes, located between I-25 and Chambers Road, are open 24/7 and toll prices range from \$1.50 to \$4.50 with an ExpressToll pass.

#### Express Lanes:

- Overhead signs display current toll prices, and rates will depend on time of day.
- The Express Lanes are free to motorcyclists, commercial transit vehicles and carpoolers with three or more passengers and a Switchable HOV Transponder.
- Express Lanes are designed to ease traffic congestion across all lanes in a dedicated corridor, including the untolled, or general purpose, lanes.
- Express Lanes span 10 miles in each direction on I-70 from I-25 to Chambers Road.
- Overhead signs will indicate toll prices.
- Express Lanes are free to motorcyclists and commercial transit vehicles.
- Vehicles with four or more axles or longer than 25-feet can use the Express Lanes but will be charged a \$25 surcharge for each trip.

To support neighboring communities along the Central 70 corridor, CDOT is offering an Express Lane tolling equity program to qualifying residents in the Globeville and Elyria-Swansea neighborhoods. Qualifying residents can receive a free ExpressToll pass, transit pass and toll credit through the program.

# Completed Projects

## Region 1 - Metro Denver

### I-25 South Gap (Central Colorado) - 0001



I-25 South Gap CDOT completed all major construction activities of the \$419 million I-25 South Gap project from Monument to Castle Rock on time and on budget in November 2022. What was once a congested bottleneck with limited shoulders is now a modern and much safer stretch of I-25 that connects Denver and Colorado Springs.

- This project will greatly improve safety, offer multi-modal choices and provide long-term travel reliability.
- The project improved 18 miles of I-25 between Castle Rock and Monument by adding an Express Lane in each direction, rebuilding five bridges, building four new wildlife crossings, adding a southbound I-25 truck climbing lane from Greenland Road to Monument Hill and a chain-up station at Larkspur and installing and testing tolling infrastructure.
- Express Lanes and the project's final alignment opened to traffic a year ahead of schedule in December 2021.
  - Express Lane tolling is expected to begin in early 2024.

# Completed Projects

---

## Region 1 - Metro Denver

### I-70 Over 32nd Avenue Bridge Replacement Project (Central Colorado) - 0087



The Colorado Department of Transportation along with contractor partner Kraemer North America completed the I-70 over 32nd Avenue bridge replacement project in the City of Wheat Ridge in mid-November.

- This state-funded project was the first of several bridge replacement projects along this stretch of I-70 from 32nd Avenue to Harlan Street and is part of CDOT's overall 10-year commitment to replace aged bridges across the region and the state.
- Work on this five-phase project began in February 2022 and was completed on time in mid-November 2023 and within budget at \$9.3 million.

With the completion of this project, the bridges at I-70 over 32nd Avenue are up to modern standards, which improves safety and supports increased traffic on the I-70 corridor.

# Completed Projects

## Region 2 - Southeast Colorado

### US 50 Purcell Drive Interchange - 0009



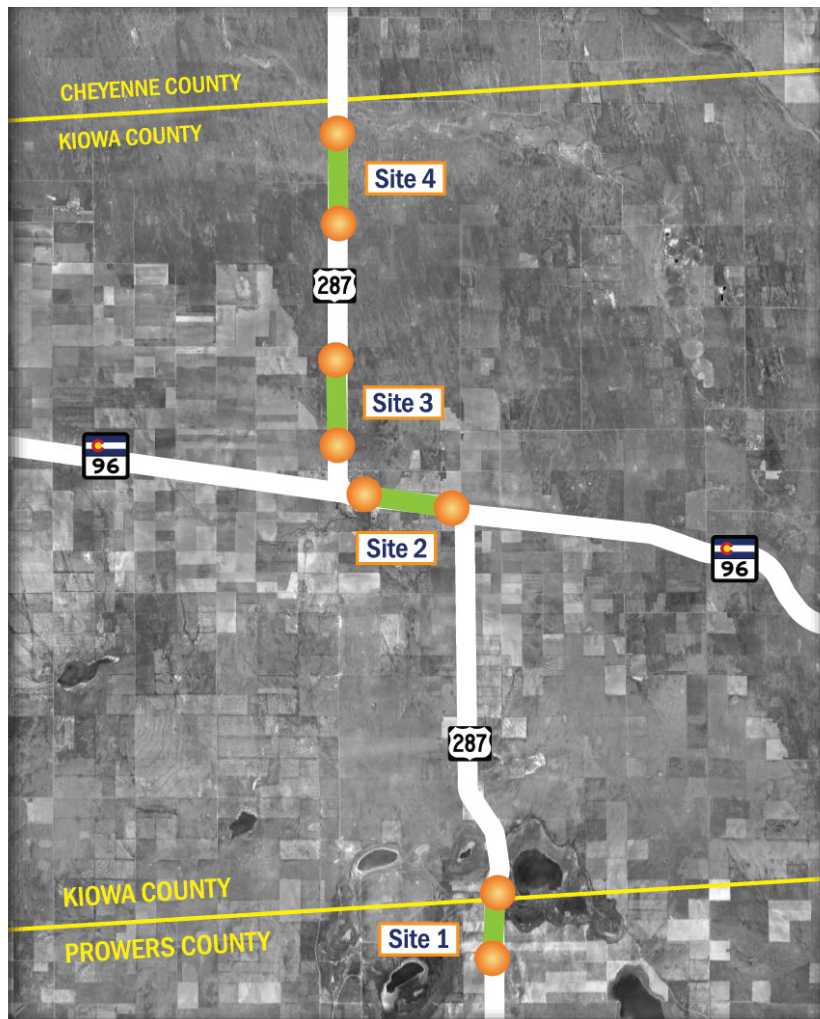
Construction of the new interchange at US Highway 50 and Purcell Boulevard in Pueblo West began in July 2020 and was completed this year.

- The first phase of the project lengthened the third westbound travel lane of US 50 between Pueblo Boulevard and Purcell Boulevard. Improvements included sidewalks, curbs and gutters.
- The \$33 million project significantly increases safety on this highway that carries a high volume of traffic, reduces commuting times for area residents and allows pedestrians to safely navigate the intersection.

# Completed Projects

## Region 2 - Southeast Colorado

### US 287 Passing Lanes between Kit Carson and Lamar



Two northbound passing lanes were added to US 287 between exits 94 and 96 to exits 114 to 116. Two southbound passing lanes were added between exits 110.9 to 112.4 and exits 120 to 122.

- Project included embankment work, removal of existing concrete and asphalt pavements, aggregate base course, concrete paving, traffic control, fencing, signing, striping, and native seeding.
- Work will greatly improve safety for motorists on a two-lane stretch of US 287 between Kit Carson and Lamar by providing space and opportunities for vehicles to safely pass slower-moving traffic.
- Selected as an award winner in the State Roads category by the American Concrete Pavement Association.

# Completed Projects

## Region 3 - Northwest Colorado

### I-70 Frisco to Silverthorne Eastbound Auxiliary Lane - 0043



I-70 Frisco to Silverthorne Eastbound Auxiliary Lane

The project was completed in fall 2023.

- Project was centered around a new auxiliary lane from Frisco to Silverthorne, designed to reduce delays and interstate closures caused by crashes.
- Project complements several other safety improvement projects along the I-70 corridor.



# Completed Projects

---

## Region 2 - Northwest Colorado

### CO 114 Parlin West/CO 114 Sillsville Overlay in Gunnison to Saguache County - 0056



Crews completed resurfacing, leveling, widening shoulders and upgrading guardrails along 22 miles of Colorado Highway 114 in Gunnison and Saguache counties.

- Project will improve and prolong the life of the road surface.
- Project is part of CDOT's 10-year plan and is one of 38 projects focused on improving rural roads in northwest Colorado.

# Completed Projects

## Region 4 - Northeast Colorado

### North I-25 Express Lanes Berthoud to Fort Collins



This year was a banner one for the North I-25 projects (Segments 6, 7 & 8). On Dec. 15, the final lanes were opened for the public to use, marking 14 years ahead of the original design schedule for three lanes of traffic in each direction from Berthoud (CO 56) to Fort Collins (just shy of CO 14).

- This project includes improving 20-miles of mainline I-25 infrastructure by straightening horizontal and vertical curves, widening shoulders, and adding Express Lanes.
  - In addition to the mainline safety and operational improvements, the projects also completely rebuilt five interchanges, 33 bridges, and incorporated intelligent transportation features.

What started in 2018 with the work from Johnstown to Fort Collins, expanded in scope and funding to include an additional 5.5 miles from Berthoud to Johnstown. Important scope was added to realize DTR's mobility hub vision by incorporating the first two center-load Bustang stops and regional mobility hubs, one at Loveland/Centerra and the other in Berthoud. A third mobility hub is under construction at CO 119.

The first two hubs are expected to be online in spring of 2024 and the CO 119 hub is scheduled to start passenger pick-up in the summer. While substantial construction will be done in 2023 and the express lanes will be opened, tolling will commence in 2024. Drivers will be able to use the open express lanes for free during the testing and back office integration period to ensure tolling and billing runs smoothly at commencement.

# Completed Projects

---

## Region 4 - Northeast Colorado

### North I-25 Express Lanes Berthoud to Fort Collins

Segment 5 also had a big year in 2023, as a sizable portion of project funding was secured for an additional 6-miles stretch from Mead to Berthoud.

- The safety and operational improvements in the corridor add express lanes in each direction. Design has progressed to 40% and the team is anxiously awaiting a decision by the DOT that will determine if the project is a successful recipient of a federal \$100M grant the team applied for. Segment 5 will begin an expected four-year construction journey, with final completion in 2028.
- When completed for the first time in Colorado's history, there will be at least three lanes in each direction from Denver to Fort Collins.

# Completed Projects

## Region 5 - Southwest Colorado

### US 160 Four Corners to Aztec Creek (Rural Paving Project) - 0078



In June of 2023, US Highway 160 was successfully resurfaced from the Four Corners to Aztec Creek. The 9-mile stretch of highway included a full-depth reclamation and reconstruction.

- All layers of the roadway were pulverized and reused in a new hot mix asphalt paving.
- Aspects of the project included shoulder widening, construction of additional passing lanes and acceleration/deceleration lanes at the CO Highway 41 junction.
- Crews also performed bridge maintenance, culvert repairs, new pavement markings and signing.
- This two-season rural paving project significantly improved a rough and deteriorated road surface, which enhances safety and saves motorists in fuel efficiency and vehicle operating costs.

# Projects Underway

## (Starting in 2024)

### Region 1 - Metro Denver

#### Floyd Hills (Central Colorado) - 0004



Construction started in fall 2022 with a wildlife crossing and roundabouts. With construction beginning on the mainline in the summer of 2023, the project will make much-needed improvements along eight miles of I-70.

- This stretch has not seen significant improvements since its original construction in the 1960s. Today, maintaining the corridor's aging infrastructure is increasingly expensive, time-consuming and disrupts travel for communities and the public.
- I-70 is the lifeline for commerce and tourism that supports rural mountain town economies and the improvements brought by this project are essential to everyone who relies on I-70.
- Major elements of the project include adding a third westbound travel lane on I-70, constructing a missing frontage road connection, adding an eastbound auxiliary lane to the uphill section of Floyd Hill, improving interchanges and intersections, improving design speeds, stopping sight distance on horizontal curves and improving the Clear Creek Greenway.
- Improvements also include environmental mitigation for wildlife connectivity, air and water quality, stream conditions and recreation.
- Early action projects are underway, and these improvements will save users travel time for weekend trips and decrease the number and severity of crashes through more consistent traffic flow and speeds.

In September 2022, CDOT was awarded a \$100 million grant from the Infrastructure Investment and Jobs Act (IIJA). This is more than CDOT has received through any prior single grant from the U.S. Department of Transportation.

# Projects Underway

(Starting in 2024)



## Region 2 - Southeast Colorado

### Military Access, Mobility, & Safety Improvement Project, I-25 - 0015



I-25 North to South along the Colorado Spring Corridor

I-25 is the backbone of Colorado's vehicular mobility and freight movement and is the major north to south transportation corridor in Colorado Springs.

- Improvements to I-25 addressed in this project are located along an approximately 7.5-mile segment of the corridor beginning at South Academy Boulevard and extending to the Santa Fe Avenue (CO 85/87) exit at Fountain (MP 128), which exits to Gate 19 of Fort Carson.
- Project replaces two bridges crossing South Academy Boulevard, widening of the inside and outside shoulders with safety improvements, concrete surface treatment overlay, median barrier installation and installation of a deceleration lane at interchange with CO 16.

# Projects Underway

(Starting in 2024)

---



## Region 3 - Northwest Colorado

### I-70 East of 1st Street to 15th Street (Northwest Colorado) - 0041

Construction is anticipated to begin in 2024 for the I-70B South of Rood Avenue project, which is Phase 6 in a series of improvements along the I-70B corridor in Grand Junction.

- Final design addresses congestion; brings multimodal improvements that will allow for a safer and more comfortable travel experience for cars, pedestrians and cyclists; and provides effective business access along the corridor.
- Safety improvements were identified during the 2008 Environmental Assessment and previous public engagement efforts. These and other safety and mobility improvements are part of CDOT's 10-year plan for improvements statewide.

# Projects Underway

(Starting in 2024)



## Region 4 - Northeast Colorado

### I-70 East to the State Line



The need for work and attention on Interstate 70 east of Denver to the state line has been growing over the years. Several projects on I-70 have focused on the areas of the biggest need, including a major \$51M project from Arriba to Flagler that was completed in 2020.

- This project replaced 15 miles of failing asphalt with concrete and included rehabilitation of two structures.
- Currently in construction, is the rehabilitated eight structures between Agate and Limon. This included polyester concrete overlay on the bridge decks to provide a more durable surface.

In Spring of 2024, a \$46.1 million construction project will begin from Bethune to the state line that will fix a road that has been an area of intense need and public interest for much of this year.

Specifically, this project will address the west and eastbound lanes between Bethune and Burlington and the west bound lanes only between Burlington and the state line. This 22.3 mile stretch will include providing a hot mix asphalt overlay of the aforementioned sections, minor bridge rehabilitation, drainage and guardrail improvements.



# Projects Underway

(Starting in 2024)



## Region 5 - Southwest Colorado

### US 160 Fort Garland Wildlife Mitigation



A wildlife mitigation project will take place on US Highway 160 in Costilla County, between Fort Garland and La Veta Pass. Construction for this 10-year plan project is scheduled to begin in summer of 2024.

- Project will improve safety for both wildlife and motorists while maintaining and fostering habitat connectivity for western Colorado's mule deer and elk population. Crews will install three wildlife underpasses, 8-foot-tall exclusion fencing along both sides of the highway, earthen escape ramps for wildlife to jump to safety out of the fenced corridor and deer guards or gates installed at vehicle access points.
- Project includes intersection upgrades US 160 & Trinchera Ranch Road with acceleration and deceleration lanes to improve vehicle turning movements.

# Project Pipeline

Adopted May 2020 Updated November 2023



CDOT's 10-Year Plan represents projects proposed for strategic state and federal legislative funding. The table indicates:

**Project Type:** This indicates the primary project type, with projects classified as Highway (H), Highway with Transit (H,T), Rural Paving (RP) or Transit (T).

**Total Est. Project Cost:** This is a planning-level estimate of how much a project will cost in total.

**Total Strategic Funding:** This indicates how much has been approved for funding or is proposed or planned for funding from state strategic funding sources (SB-1, SB-267, and SB-260) and federal strategic funding sources (federal stimulus and IJA). Note: Sometimes the total project cost is more than what is being proposed for strategic funding, especially for the larger projects. This indicates that CDOT may need to leverage the strategic funds with other funding sources to deliver the project.

**Other Funding:** A check mark in this box indicates other funding sources (state, federal, local, grants, enterprise funding, etc.) will be utilized to deliver the project.

**Funded FY 19-22:** This shows projects funded by SB-1, SB-267, SB-260, and federal stimulus (2021) during the first four years of the 10-Year Plan, fiscal years 2019-2022.

**Funded FY 23-26:** This shows the projects funded for the next four years of the 10-Year Plan, in fiscal years 2023-2026.

**Planned FY 27+:** This shows the projects planned for the outyears of the 10-Year Plan, fiscal years 2027 and beyond. These projects have yet to be prioritized or approved for funding by the Transportation Commission.

**Project Status:** This shows the current status of projects, whether completed, under construction/in progress, and projects that are set to go to construction within the next year. Planning Project ID: This unique planning ID can be used to find more information about each project, including more detailed project fact sheets.

**NOTE:** The fact sheets were last updated September of 2022. Further updates are anticipated to occur in Spring of 2024.

## Central Projects

	Project Type	Total Est. Project Cost	Total Strategic Funding	Other Funding	Funded FY 19-22	Funded FY 23-26	Planned FY 27+	Project Status	Planning Project ID
<b>Highway &amp; Transit– Region 1</b>									
Interstate 25	Castle Rock Mobility Hub	\$16.7 M	\$13.47 M	✓	\$10.5 M	\$2.97 M		■	<a href="#">2714</a>
	Lone Tree Mobility Hub	\$20 M	\$10 M	✓	\$10 M			■	<a href="#">2744</a>
	I-25 North between 84th Avenue and 104th Avenue	TBD	\$110 M	✓	\$4 M	\$16 M	\$90 M	■	<a href="#">2584, 2642</a>
	I-25 South Gap	\$439.47 M	\$278.78 M	✓	\$278 M			✓	<a href="#">0001</a>
	I-25 Interchange Reconstruction at Speer Boulevard and 23rd Avenue	\$75 M	\$15 M	✓	\$3.5 M	\$11.5 M		●	<a href="#">2575</a>
	I-25 and CO 7 Interchange Mobility Hub	\$15.25 M	\$14 M		\$14 M			■	<a href="#">2694</a>
	I-25 at Belleview Avenue Interchange - Phase 1	\$110 M	\$22 M	✓			\$22 M	●	<a href="#">2588</a>
	I-25 Central Non-Capacity Safety and Operational Improvements	TBD	\$35 M	✓			\$35 M	●	<a href="#">2576</a>
Burnham Yard Acquisition	\$50 M	\$15 M	✓	\$15 M			✓	<a href="#">2779</a>	
Interstate 70	I-70/Harlan Bridge Replacement	\$25.6 M	\$21.9 M	✓	\$21.9 M			◆	<a href="#">0086</a>
	I-70 Corridor-West Metro Bridges	\$67 M	\$33.9 M	✓	\$35.2 M			◆	<a href="#">0087</a>
	I-70 Peak Period Shoulder Lanes	\$122.2 M	\$89.5 M	✓	\$89.5 M			✓	<a href="#">0005</a>
	I-70 West: Floyd Hill	\$700 M	\$340 M	✓	\$191.8 M	\$148.2 M		◆	<a href="#">0004</a>
	Idaho Springs Mobility Hub	\$13.2 M	\$6.33 M	✓	\$6.33 M			●	<a href="#">2716</a>
	I-70 and Kipling Street Interchange	\$70 M	\$30 M	✓	\$2.5 M		\$27.5 M	●	<a href="#">2580</a>
	I-70 Climbing Lane from Bakerville to the Eisenhower Tunnel	\$32 M	\$25 M	✓			\$25 M	X	<a href="#">2582</a>
	Eisenhower-Johnson Memorial Tunnel Repairs and Maintenance	\$156 M	\$50 M	✓	\$50 M			◆	<a href="#">2583</a>
	I-70 Escape Ramp Improvements	\$29 M	\$14.5 M	✓	\$13 M			◆	<a href="#">2593</a>
	I-70 Bustang Pegasus Park-n-Rides	\$12 M	\$12 M		\$4 M	\$3 M	\$5 M	■	<a href="#">2753</a>
I-270	I-270 Improvements and Congestion Relief from I-76 to I-70	\$600 M	\$200 M	✓	\$30 M	\$144.5 M	\$25.5 M	■	<a href="#">0002</a>
US 6	Vasquez Boulevard Improvements	\$27 M	\$10 M	✓		\$10 M		■	<a href="#">2585</a>
	US 6 and Wadsworth Boulevard Interchange	\$135 M	\$60 M	✓	\$40 M	\$20 M		◆	<a href="#">2578</a>
US 85	US 85 Corridor Improvements between Sedalia and Meadows Parkway in Castle Rock	\$58 M	\$37 M	✓			\$37 M	■	<a href="#">2587</a>
US 285	US 285 Corridor Improvements near Pine Junction	TBD	\$60 M				\$60 M	●	<a href="#">2581</a>
CO 7	CO 7 Priority Intersection Improvements	\$30 M	\$20 M				\$20 M	●	<a href="#">2586, 2641</a>
CO 30	CO 30 Improvements between Quincy Road and Airport Road	TBD	\$25 M				\$25 M	●	<a href="#">2589</a>
C 470	C-470: US 285 to Morrison Road Interchange Reconstruction	\$56 M	\$56 M				\$56 M	●	<a href="#">2579</a>
Non Corridor Specific	Advancing Transportation Safety (Vasquez Boulevard Improvements: 60th Avenue to 62nd Avenue Project)	\$8.56 M	\$8.56 M			\$8.56 M		■	<a href="#">2784</a>
	Vision Zero Priority Improvements	\$25 M	\$15 M			\$15 M		■	<a href="#">2691</a>
	Safer Main Streets Program	\$75 M	\$67.3 M	✓	\$68.9 M			◆	<a href="#">Weblink</a>
	Bustang Heavy Maintenance Facility	\$17 M	\$9.5 M		\$0.95 M	\$3.55 M	\$5 M	●	<a href="#">2715</a>
	Noise Wall Maintenance	\$36.6 M	\$29.7 M	✓	\$29.7 M			◆	<a href="#">2594</a>
	Bustang Fleet Purchases	\$4.425 M	\$4.425 M		\$4.425 M			■	<a href="#">2718</a>
	Regionwide Bottleneck Reduction	TBD	\$25 M	✓			\$25 M	●	<a href="#">2590</a>
	Regionwide Signal and Ramp Meter Upgrades	TBD	\$17 M	✓			\$17 M	■	<a href="#">2592</a>
	Regionwide Trail Grade Separations and Crossings Improvements	\$10 M	\$10 M				\$10 M	■	<a href="#">2595</a>
	Regionwide Bridge Rehabilitation and Maintenance	\$500 M	\$20 M	✓			\$20 M	■	<a href="#">2697</a>
Regionwide Arterial BRT and Transit Improvements	\$480 M	\$170 M		\$3 M	\$72 M	\$95 M	■	<a href="#">2638</a>	

✓ Completed. ◆ In Construction. ● Planning. ■ Design. X On Hold.

H: Highway | T: Transit | RP: Rural Paving



Learn More [YTP.codot.gov](http://YTP.codot.gov) | [YTP@state.co.us](mailto:YTP@state.co.us)

# Project Pipeline

Adopted May 2020 Updated November 2023



## Southeast Projects

	Project Type	Total Est. Project Cost	Total Strategic Funding	Other Funding	Funded FY 19-22	Funded FY 23-26	Planned FY 27+	Project Status	Planning Project ID
<b>Highway &amp; Transit– Region 2</b>									
Interstate 25	I-25 Paving and Mobility - Fillmore to Garden of the Gods	\$68.6 M	\$48.3 M	✓	\$43 M			◆	<a href="#">0016</a>
	I-25 Colorado Springs Ramp Metering - Phase 2	\$6.2 M	\$6.2 M		\$6 M			◆	<a href="#">0017</a>
	Outrider Improvements at Tejon Park-n-Ride	\$80 K	\$80 K		\$80 K			●	<a href="#">2725</a>
	Woodmen Road Mobility Hub	\$3 M	\$6 M		\$6 M			■	<a href="#">2720</a>
	Monument Park-n-Ride	\$0.5 M	\$0.5 M		\$0.5 M			●	<a href="#">2721</a>
	Bijou Street Storage and Maintenance Facility	\$7.5 M	\$2.8 M		\$3 M			✓	<a href="#">2722</a>
	I-25 through Pueblo New Freeway	\$159 M	\$91 M	✓	\$76.57 M	\$14.43 M		■	<a href="#">0014, 2560</a>
	I-25 and CO 94 Safety and Mobility Improvements (MAMSIP)	\$150.7 M	\$39.9 M	✓	\$44.3 M			◆	<a href="#">0015</a>
	I-25 Raton Pass Safety and Interchange Improvements	\$21 M	\$18.7 M		\$14 M			◆	<a href="#">0013</a>
	I-25 at Exit 104 - Dillon Drive Improvements	\$15 M	\$8.4 M	✓	\$1.5 M	\$3 M		◆	<a href="#">2565</a>
	North Pueblo Mobility Hub	\$6 M	\$6 M		\$6 M			X	<a href="#">2723</a>
	Pueblo Administrative and Maintenance Facility	\$20 M	\$2.18 M	✓	\$2.18 M			●	<a href="#">2724</a>
	Southwest Chief Thru-Car Study - CRISI Grant Match	\$0.45 M	\$50 K	✓	\$50 K			◆	<a href="#">2734</a>
	South Central Storage and Maintenance Facility	\$3.29 M	\$2.63 M	✓	\$2.63 M			●	<a href="#">1270</a>
	Outrider Improvements at Colorado City Corners, Walsenburg, and Aguilar	\$0.2 M	\$0.2 M		\$0.2 M			●	<a href="#">2497</a>
	Bustang Fountain Mobility Hub	\$8.2 M	\$8.2 M			\$8.2 M		●	<a href="#">2703</a>
	I-25 Exit 108 (Purcell Boulevard) Replace Single Box Culvert Crossing Under I-25	\$30 M	\$11 M			\$2 M	\$9 M	■	<a href="#">2562</a>
	I-25C and US 160 Intersection Improvements	\$5 M	\$5 M			\$5 M		■	<a href="#">1502</a>
	I-25 Business Route through Walsenburg	\$2.83 M	\$2.83 M				\$2.83 M	●	<a href="#">2616</a>
	I-25C North to I-25	\$8.6 M	\$5 M			\$5 M		■	<a href="#">2757</a>
Implement Recommendations from Trinidad Traffic Study	\$5 M	\$5 M			\$5 M		■	<a href="#">2758</a>	
Safety and Operational Improvements Exit 135 South Academy to Exit 138 Circle/Lake	\$48.7 M	\$21.8 M	✓			\$21.8 M	●	<a href="#">2759</a>	
<b>US 24</b>									
US 24 Shoulder Widening	H	\$10.5 M	\$10 M				\$10 M	●	<a href="#">1642</a>
US 24 East Widening	H	\$54 M	\$50 M			\$50 M		■	<a href="#">2548</a>
US 24 West over Ridge Road (Overpass)	H	\$35.5 M	\$33.4 M				\$33.4 M	■	<a href="#">2549</a>
New Regional Fixed-Route Transit Service in Teller County	T	\$0.6 M	\$0.6 M			\$0.6 M		●	<a href="#">1068</a>
US 24 between Trout Creek Pass and Hartsel	RP	\$7.14 M	\$7.14 M				\$7.14 M	●	<a href="#">2610</a>
US 24 Hartsel to East of Wilkerson Pass, US 24 East of Wilkerson Pass to Lake George, US 24 between Lake George and Divide (MP 245..9 - 275.1)	RP	\$12.9 M	\$12.9 M			\$12.9 M		■	<a href="#">2611, 2612, 2613</a>
<b>US 50</b>									
US 50 and Purcell Drive Interchange	H	\$50 M	\$38.9 M	✓	\$38.69M			✓	<a href="#">0009</a>
US 50 Texas Creek East	RP	\$8.4 M	\$8.4 M		\$9.8 M			✓	<a href="#">0022</a>
Outrider Improvements at Pueblo West	T	\$80 K	\$80 K		\$80 K			●	<a href="#">2726</a>
Outrider Improvements at Lamar, Fort Lyon, Las Animas, La Junta, Swink, Rocky Ford, Manzanola, & Fowler	T	\$0.6 M	\$0.6 M		\$0.6 M			●	<a href="#">2495</a>
Outrider Improvements at Cañon City and Cotopaxi	T	\$0.16 M	\$0.16 M		\$0.16 M			●	<a href="#">2496</a>
Southwest Chief Track Improvements - RAISE Grant Match	T	\$27.3 M	\$1 M	✓	\$1 M			◆	<a href="#">2735</a>
Expanded Golden Shuttle Fixed-Route Service in Fremont County	T	\$1.33 M	\$1.33 M				\$1.33 M	●	<a href="#">1070</a>
Expanded Local Fixed-Route Service between Florence-Penrose-Cañon City	T	\$0.76 M	\$0.76 M				\$0.76 M	●	<a href="#">1071</a>
Business US 50 Drainage Improvements at 36th Lane	H	\$7.5 M	\$5.5 M				\$5.5 M	●	<a href="#">2563</a>
La Junta Multimodal Transit Center	T	\$4 M	\$4 M				\$4 M	●	<a href="#">1285</a>
La Junta to Fowler Fixed-Route Service	T	\$0.6 M	\$0.6 M				\$0.6 M	●	<a href="#">1287</a>
City of La Junta Bus Barn Rehabilitation	T	\$0.2 M	\$0.2 M			\$0.2 M		●	<a href="#">1288</a>
Expand Deviated Fixed-Route Services in La Junta	T	\$0.4 M	\$0.4 M				\$0.4 M	●	<a href="#">1289</a>
New Regional Transit Service between Campo and Lamar; Expanded Baca County Demand Response Services	T	\$0.5 M	\$0.5 M			\$0.5 M		●	<a href="#">1049</a>
US 50 Passing Lanes between Fowler and Kansas State Line	H	\$15 M	\$15 M			\$15 M		●	<a href="#">1614</a>
Realign US 50 as a Part of US 287 Reliever Route Project	H	\$34.2 M	\$34.2 M				\$34.2 M	●	<a href="#">1617</a>
US 50 between Penrose and the Fremont/Pueblo County Line	RP	\$9.14 M	\$9.14 M				\$9.14 M	●	<a href="#">2607</a>
US 50 Safety Improvements west of Cañon City	H	\$20 M	\$8.5 M	✓			\$8.5 M	■	<a href="#">2760</a>
<b>US 160</b>									
US 160 Curve Alignment	H	\$1 M	\$1 M				\$1 M	●	<a href="#">1628</a>
US 160 Freight and Safety Improvements	H	\$13.2 M	\$13.2 M				\$13.2 M	●	<a href="#">1508</a>
Kim Transit Garage	T	\$0.5 M	\$0.5 M			\$0.5 M		●	<a href="#">1044</a>
Expanded Regional Transit Service for Branson, Kim, and Baca County	T	\$0.6 M	\$0.6 M			\$0.6 M		●	<a href="#">1045</a>
Baca County Bus Facility	T	\$0.4 M	\$0.4 M			\$0.4 M		●	<a href="#">1048</a>
US 160 Walsenburg West	RP	\$1.92 M	\$1.92 M				\$1.92 M	●	<a href="#">2617</a>
US 160 between North La Veta Pass and Junction CO 12	RP	\$10.5 M	\$10.5 M		\$9.9 M			✓	<a href="#">2621</a>
US 160 between I-25 Business Route (Walsenburg) and I-25	RP	\$0.64 M	\$0.64 M				\$0.64 M	●	<a href="#">2622</a>
US 160 between Pritchett and Kim	RP	\$15 M	\$15 M			\$15 M		■	<a href="#">2626</a>
US 160 between Springfield and CO 100 and CO 100 from MP 0 to MP 0.42	RP	\$6.8 M	\$6.8 M		\$6.8			✓	<a href="#">0030</a>
<b>US 285</b>									
US 285/CO 9 Intersection Improvement with Bridge Widening	H	\$33.7 M	\$15.4 M	✓	\$7 M			◆	<a href="#">0008</a>
Fairplay Mobility Hub	T	\$4 M	\$4 M		\$4 M			●	<a href="#">1084</a>
US 285 South of Bailey to Park/Jefferson County Line	RP	\$15.8 M	\$6.85 M				\$6.85 M	■	<a href="#">2609</a>
<b>US 287</b>									
US 287 Lamar Downtown PCCP - Phase 1 and Phase 2	H	\$31.2 M	\$17 M		\$18 M			◆	<a href="#">0010</a>
US 287 Bridge Preventative Maintenance - Phases 1 and 2	H	\$2.9 M	\$2.9 M		\$5 M			✓	<a href="#">0007</a>
Prowers County Bus Barn Office Extension	T	\$0.111 M	\$0.111 M	✓	\$0.111 M			◆	<a href="#">2485</a>
Kiowa County Bus Storage Facility	T	\$0.35 M	\$0.35 M	✓	\$0.35 M			●	<a href="#">1281</a>

✓ Completed. ◆ In Construction. ● Planning. ■ Design. X On Hold.

H: Highway | T: Transit | RP: Rural Paving



Learn More [YTP.codot.gov](http://YTP.codot.gov) | [YTP@state.co.us](mailto:YTP@state.co.us)

# Project Pipeline

Adopted May 2020 Updated November 2023



## Southeast Projects

	Project Type	Total Est. Project Cost	Total Strategic Funding	Other Funding	Funded FY 19-22	Funded FY 23-26	Planned FY 27+	Project Status	Planning Project ID
<b>Highway &amp; Transit– Region 2 (continued)</b>									
US 350	US 350 Shoulder Widening and Safety Improvements	H	\$5.5 M	\$5.5 M			\$5.5 M	●	<a href="#">1511</a>
	US 350 between La Junta and Delhi	RP	\$10 M	\$10 M		\$10 M		■	<a href="#">2627</a>
US 385	Passing Lanes on US 385	H	\$5 M	\$5 M			\$5 M	●	<a href="#">1631</a>
	US 385 North of Sheridan Lake to Kiowa/Cheyenne County Line	RP	\$4.96 M	\$4.96 M			\$4.96 M	●	<a href="#">2628</a>
	US 385 between Granada and Junction CO 96	RP	\$13.19 M	\$13.19 M			\$13.19 M	●	<a href="#">2629</a>
CO 10	CO 10 Shoulder Widening	H	\$10 M	\$10 M			\$10 M	●	<a href="#">1626</a>
	CO 10 Walsenburg East	RP	\$15.9 M	\$15.9 M		\$15.9 M		●	<a href="#">2618</a>
	CO 10 Otero/Pueblo County Line East	RP	\$1.56 M	\$1.56 M			\$1.56 M	●	<a href="#">2624</a>
CO 12	CO 12 PEL Implementation - Shoulder Widening (Southern Mountain Loop Trail)	H	\$10 M	\$10 M	\$4 M		\$6 M	■	<a href="#">1039</a>
	Expanded Regional Transit Service between Trinidad and CO 12 Communities	T	\$2 M	\$2 M			\$2 M	●	<a href="#">1267</a>
	CO 12 ADA Ramps and Sidewalk Improvements in La Veta and Trinidad	H	\$2.25 M	\$1 M			\$1 M	■	<a href="#">1493</a>
	CO 12 Junction US 160 South	RP	\$2.81 M	\$2.81 M			\$2.81 M	●	<a href="#">2619</a>
	CO 12 East of Valdez to Trinidad	RP	\$6.26 M	\$6.26 M			\$6.26 M	●	<a href="#">2620</a>
CO 21	CO 21 and Research Parkway Interchange	H	\$37.4 M	\$28 M	✓	\$19.5 M		✓	<a href="#">0011</a>
	CO 21 and Airport Road DDI Interchange Construction	H	\$55.5 M	\$49 M		\$4 M	\$45 M	■	<a href="#">2547</a>
CO 47	CO 47 Four-Lane Extension to US 50	H	\$8 M	\$8 M			\$8 M	●	<a href="#">2561</a>
CO 67	Cripple Creek Administration and Operations Facility	T	\$2.2 M	\$2.17 M	✓	\$0.12 M	\$2.05 M	■	<a href="#">1075, 1078</a>
	CO 67 Passing Lanes	H	\$10.7 M	\$10.5 M			\$10.5 M	●	<a href="#">1010</a>
	CO 67 from CO 96 to Florence	RP	\$6 M	\$6 M		\$5.8 M		✓	<a href="#">0027</a>
	CO 67 between Florence and US 50	RP	\$2 M	\$2 M			\$2 M	●	<a href="#">2614</a>
	CO 67 North of Woodland Park	H	\$10 M	\$6.5 M	✓		\$6.5 M	■	<a href="#">2761</a>
CO 69	CO 69 between Westcliffe and Fremont County Line	RP	\$6.8 M	\$6.8 M		\$6.97 M		✓	<a href="#">0026</a>
	CO 69 Shoulder and Safety Improvements	H	\$10 M	\$10 M			\$10 M	●	<a href="#">2567</a>
	Westcliffe Vehicle Housing	T	\$0.46 M	\$0.46 M			\$0.46 M	●	<a href="#">1079</a>
CO 71	CO 71 Passing Lanes	H	\$6 M	\$6 M		\$6 M		■	<a href="#">1633</a>
CO 96	CO 96 Shoulder Widening	H	\$10.5 M	\$10.5 M			\$10.5 M	●	<a href="#">1665</a>
	CO 96 and CO 71 Intersection Improvements	H	\$1.8 M	\$0.8 M			\$0.8 M	■	<a href="#">1625</a>
	CO 96 West of Pueblo	H	\$11.5 M	\$11.5 M			\$11.5 M	●	<a href="#">2559</a>
	Expand Crowley County Transit Service in Crowley County and Sugar City	T	\$0.4 M	\$0.4 M			\$0.4 M	●	<a href="#">1294</a>
	CO 96 East of Ordway to Arlington	RP	\$10 M	\$0.17 M		\$0.18 M		◆	<a href="#">0024</a>
	CO 96 near Eads to Sheridan Lake	RP	\$17 M	\$17 M		\$21.4 M		◆	<a href="#">0025</a>
CO 101	CO 101 between Las Animas and Toonerville	RP	\$9.83 M	\$9.83 M			\$9.83 M	●	<a href="#">2625</a>
CO 109	CO 109 La Junta Bridge Repair over US 50B	H	\$7.46 M	\$3.5 M		\$3 M		◆	<a href="#">0012</a>
	CO 109 between US 160 and Otero County Line	RP	\$13 M	\$5.1 M		\$5.1 M		✓	<a href="#">0029</a>
CO 115	CO 115 Safety and Paving Improvements	H	\$57.5 M	\$43.6 M		\$43.6 M		◆	<a href="#">0018</a>
	CO 115 Shoulders and Safety Improvements	H	\$10.5 M	\$10.5 M		\$3.5 M	\$7 M	■	<a href="#">1080</a>
	New Interregional Transit Service between Cañon City-Florence-Colorado Springs	T	\$0.84 M	\$0.84 M		\$0.84 M		●	<a href="#">1081</a>
	CO 115 between Canon City and US 50	RP	\$8.01 M	\$8.01 M			\$8.01 M	●	<a href="#">2608</a>
CO 116	CO 116 between US 287 and Kansas Border	RP	\$11.5 M	\$11.5 M		\$12.5 M		✓	<a href="#">0023</a>
CO 120	CO 120 East of Florence to US 50	RP	\$2.9 M	\$2.9 M			\$2.9 M	●	<a href="#">2615</a>
CO 194A	CO 194A Surface Treatment and Drainage Improvements	RP	\$8 M	\$8 M		\$5.98 M		◆	<a href="#">0028</a>
CO 389	CO 389 between CO/NM State Line and Junction US 160	RP	\$5.28 M	\$5.28 M			\$5.28 M	●	<a href="#">2623</a>

✓ Completed. ◆ In Construction. ● Planning. ■ Design. X On Hold.

H: Highway | T: Transit | RP: Rural Paving



[Learn More](#)

[YTP.codot.gov](http://YTP.codot.gov) | [YTP@state.co.us](mailto:YTP@state.co.us)

# Project Pipeline

Adopted May 2020 Updated November 2023



## Southeast Projects



	Project Type	Total Est. Project Cost	Total Strategic Funding	Other Funding	Funded FY 19-22	Funded FY 23-26	Planned FY 27+	Project Status	Planning Project ID	
<b>Highway &amp; Transit– Region 2 (continued)</b>										
Non-Corridor Specific	Advancing Transportation Safety	H	\$4.74 M	\$4.74 M		\$4.74 M		■	<a href="#">2780</a>	
	Bridge Preventative Maintenance - CO 12 and CO 194	H	\$1.8 M	\$1.8 M		\$2.5 M		✓	<a href="#">0019</a>	
	Bridge Preventative Maintenance on I-25, CO 16, and US 24 in Colorado Springs	H	\$1.8 M	\$1.8 M		\$2.5 M		✓	<a href="#">0020</a>	
	Bustang Fleet Purchases for Region 2	T	\$1.25 M	\$1.25 M		\$1.25 M		✓	<a href="#">2755</a>	
	Colorado Springs Transit Center	T	\$20 M	\$8 M	✓	\$8 M		●	<a href="#">2719</a>	
	High-Capacity Corridor Improvements in El Paso County	T	\$0.85 M	\$0.85 M			\$0.85 M	●	<a href="#">2552</a>	
	Transfer Facilities for Regional Transit Services (Cripple Creek, Cañon City, Woodland Park)	T	\$0.39 M	\$0.39 M			\$0.39 M	●	<a href="#">1004</a>	
	Mobility Management and Expansion of Upper Arkansas Area Council of Governments (UAACOG)	T	\$0.1 M	\$0.1 M			\$0.1 M	■	<a href="#">1635</a>	
	Expanded Regional Transit Service between Walsenburg-La Veta-Gardener-Cuchara	T	\$1.4 M	\$1.4 M			\$1.4 M	●	<a href="#">1038</a>	
	Expanded Regional Transit Service in Kiowa County	T	\$0.4 M	\$0.4 M			\$0.4 M	●	<a href="#">1047</a>	
	Mountain Metropolitan Transit Fixed-Route Service Expansion - Stage 1	T	\$7.8 M	\$4.8 M				\$4.8 M	●	<a href="#">2556</a>
	Pueblo Transit Fixed-Route Bus/Vehicle Replacements	T	\$7.24 M	\$7.24 M			\$3.9 M	\$3.34 M	●	<a href="#">2566</a>
	Fort Carson Circulators/Service to PPCC	T	\$1.5 M	\$1.1 M	✓		\$1.1 M		●	<a href="#">2762</a>
Academy Boulevard/Hancock Expressway Transfer Center	T	\$3 M	\$3 M				\$3 M	●	<a href="#">2763</a>	

✓ Completed. ◆ In Construction. ● Planning. ■ Design. X On Hold.

H: Highway | T: Transit | RP: Rural Paving



[Learn More](#) [YTP.codot.gov](http://YTP.codot.gov) | [YTP@state.co.us](mailto:YTP@state.co.us)

# Project Pipeline

Adopted May 2020 Updated November 2023



## Northwest Projects

	Project Type	Total Est. Project Cost	Total Strategic Funding	Other Funding	Funded FY 19-22	Funded FY 23-26	Planned FY 27+	Project Status	Planning Project ID
<b>Highway &amp; Transit – Region 3</b>									
Interstate 70	I-70 Auxiliary Lane Frisco East to Silverthorne	\$38.4 M	\$28.5 M		\$25 M			◆	0043
	I-70 West: Vail Pass Safety Improvements - Phase 1	\$458.1 M	\$83.5 M	✓	\$33.5 M	\$ 50 M		●	0042, 1161
	Summit County Transit Operations Center (Design & Engineering)	\$0.425 M	\$0.425 M	✓	\$0.425 M			✓	1165
	I-70B East of 1st Street to 15th Street - Phase 5	\$20.8 M	\$6 M		\$16 M			✓	0041
	North Avenue Transit Infrastructure Improvements	\$5.7 M	\$1.5 M		\$1.5 M			■	2727
	Grand Junction Mobility Hub	\$18.8 M	\$4.08 M	✓	\$4.08 M			■	2747
	I-70 and CO 9 (Exit 203) Interchange Improvements	\$44.5 M	\$44 M			\$25 M	\$19 M	◆	1157
	Vail Intermodal Site	\$15 M	\$6.4 M			\$6.4 M		●	1903
	I-70 Interchange Improvements in Garfield County	\$17.5 M	\$15 M	✓		\$11.18 M	\$4.325 M	■	1171
	I-70 West: Dowd Canyon Safety and Capacity Improvements	\$14 M	\$14 M				\$14 M	●	1952
	I-70 Glenwood Canyon Critical Asset Repair	\$50 M	\$50 M				\$50 M	●	1151
	I-70 Business (Pitkin Avenue) Corridor Improvements between First Street and 15th Street	\$44.7 M	\$39.19 M	✓	\$8.11 M	\$31.08 M		■	2568
	I-70 Business Corridor Improvements between 32 Road and I-70 in Grand Junction	\$5 M	\$5 M				\$5 M	●	2569
	I-70 Business Corridor Improvements between Main Street and 32 Road	\$14 M	\$14 M				\$14 M	●	2570
US 6	US 6 Fruita to Palisade Safety Improvements	\$60.3 M	\$49.4 M		\$35.95 M	\$13 M		■	0031, 2571
US 24	US 24 Safety Improvements between Minturn and Leadville	\$9.6 M	\$9.6 M				\$9.6 M	●	1203
	US 24 North of Leadville	\$9.1 M	\$8.4 M			\$8.4 M		■	2777
US 34	US 34 Grand Lake	\$8.97 M	\$8.97 M		\$8.97 M			✓	0047
US 40	Winter Park Transit Maintenance Facility - Phases 1 and 2	\$25.2 M	\$2.8 M	✓	\$2.8 M			✓	1244
	Outrider Improvements at Winter Park and Tabernash	\$0.16 M	\$0.16 M		\$0.16 M			●	2749
	Outrider Improvements at Fraser, Granby, Kremmling, and Hot Sulphur Springs	\$0.3 M	\$0.3 M		\$0.3 M			●	2494
	Outrider Improvements at Steamboat Springs, Milner, Hayden, and Craig	\$0.32 M	\$0.32 M		\$0.32 M			●	2748
	US 40 Capacity Improvements around Fraser	\$27 M	\$25 M				\$25 M	●	1259
	US 40 Red Dirt Hill Safety Improvements	\$40 M	\$27 M			\$7 M	\$20 M	■	2765
	US 40 Shoulder Improvements West of Kremmling	\$21.6 M	\$21 M				\$21 M	●	1258
	US 40 Passing Lanes West of Kremmling	\$12.3 M	\$12 M			\$12 M		■	1710
	US 40 Passing Lanes between Craig and Steamboat Springs	\$57.2 M	\$55 M				\$55 M	●	1712
	US 40 and Downhill Drive Intersection Improvements	\$8.8 M	\$8 M	✓		\$8 M		■	1729
	US 40/US 34 Intersection Improvement	\$5 M	\$5 M				\$5 M	●	1697
	Steamboat Springs Transit Fleet Expansion	\$2.4 M	\$2.4 M			\$2.4 M		●	1245
	Redesign and Construct the Steamboat Springs Transportation Center - Phase 1	\$2.3 M	\$2.3 M			\$2.3 M		●	1246
	Steamboat Springs Bus Rapid Transit Planning Study	\$0.25 M	\$0.25 M			\$0.25 M		●	1254
	US 40 East of Hayden - Phase 1	\$10 M	\$10 M			\$9 M	\$1 M	■	2643, 2646
	US 40 West of Tabernash	\$7.15 M	\$7.15 M				\$7.15 M	●	2653
US 50	US 50 Windy Point/Blue Creek Canyon	\$22.4 M	\$18.5 M	✓	\$18.5 M			◆	0033
	US 50 Passing Lanes Blue Mesa	\$10.5 M	\$7.6 M		\$6 M			◆	0034
	US 50 Grand Junction to Delta Repairs	\$17.9 M	\$15.46 M		\$15.46 M			✓	0035
	US 50/US 550 Intersection Improvements	\$3.95 M	\$3.425 M		\$1.573 M	\$1.852 M		■	0040
	Western Slope Maintenance Facility	\$2.7 M	\$2.7 M			\$2.7 M		●	2340
	US 50 Asset Management North of Montrose	\$15 M	\$15 M				\$15 M	●	1462
	Montrose Multimodal Transit Center (All Points Transit)	\$3.235 M	\$3.235 M	✓	\$3.235 M			■	1096
	Outrider Improvements at Montrose, Delta, and Gunnison	\$0.25 M	\$0.25 M		\$0.25 M			●	2454
	US 50 Safety East of Gunnison	\$15 M	\$15 M				\$15 M	●	1469
	US 50 South of Delta	\$5.17 M	\$5.17 M				\$5.17 M	●	2654
US 550	US 50 South of Olathe	\$4.07 M	\$4.07 M				\$4.07 M	●	2657
	US 50 Olathe Business Loop	\$24.67 M	\$1.2 M			\$1.2 M		■	2663
US 550	US 550 Montrose to Ouray County Line Safety Improvements	\$27.47 M	\$13 M	✓	\$12.25 M			◆	0032
CO 9	Frisco Transit Center - Phase 2	\$5.538 M	\$3.438 M	✓	\$3.438 M			✓	1191
	CO 9 South of Green Mountain Reservoir	\$7.65 M	\$7.65 M				\$7.65 M	●	2644
	CO 9 Green Mountain Reservoir - Phase 1	\$7.18 M	\$7.18 M				\$7.18 M	●	2647
	CO 9 Green Mountain Reservoir - Phase 2	\$5.75 M	\$5.75 M				\$5.75 M	●	2650
	CO 9 between Iron Springs and Main Street (Frisco)	\$19.7 M	\$15.1 M	✓	\$15.5 M			✓	0036
CO 13	CO 13 Garfield County Rio Blanco Hill	\$37.6 M	\$31.5 M		\$29 M			◆	0037
	CO 13 Rio Blanco + CO 13 Wyoming South	\$63.99 M	\$61.4 M		\$61.3 M			✓	38, 88, 89

✓ Completed. ◆ In Construction. ● Planning. ■ Design. X On Hold.

H: Highway | T: Transit | RP: Rural Paving



Learn More

YTP.codot.gov | YTP@state.co.us

# Project Pipeline

Adopted May 2020 Updated November 2023



## Northwest Projects

	Project Type	Total Est. Project Cost	Total Strategic Funding	Other Funding	Funded FY 19-22	Funded FY 23-26	Planned FY 27+	Project Status	Planning Project ID
<b>Highway &amp; Transit– Region 3 (continued)</b>									
CO 14	CO 14 Grizzly Ranch North	RP	\$6.6 M	\$6.6 M		\$1.0 M	\$7 M	✓	<a href="#">0052, 55</a>
CO 64	CO 64 Meeker West	RP	\$5.6 M	\$5.6 M		\$6 M		✓	<a href="#">0046</a>
	CO 64 East of Rangely	RP	\$4.5 M	\$4.5 M			\$4.5 M	●	<a href="#">2659</a>
CO 65	CO 65 between CO 92 and Orchard City	RP	\$8.6 M	\$5.9 M			\$5.9 M	■	<a href="#">2645</a>
	CO 65 Grand Mesa	RP	\$6.63 M	\$6.63 M			\$6.63 M	●	<a href="#">2651</a>
CO 82	RFTA Aspen Maintenance Facility Improvement - Phase 9	T	\$1.0 M	\$1.0 M	✓	\$1.0 M		✓	<a href="#">1217</a>
	RFTA Glenwood Maintenance Facility - Phases 3 and 7	T	\$46.1 M	\$2.98 M	✓	\$2.98 M		◆	<a href="#">1210</a>
CO 90	CO 90 West of Montrose	RP	\$3.64 M	\$3.64 M			\$3.64 M	●	<a href="#">2661, 2662</a>
CO 92	CO 92 Crawford East	RP	\$6.62 M	\$6.62 M		\$7.4 M		✓	<a href="#">0045</a>
	CO 92 Safety Improvements West of Hotchkiss and Rogers Mesa to Hotchkiss	H	\$47.3 M	\$47 M		\$7.0 M	\$25.1 M	■	<a href="#">0039, 1107</a>
	CO 92 between Hotchkiss and Crawford	RP	\$9.3 M	\$4.8 M		\$3.5 M		✓	<a href="#">0044</a>
	CO 92 between CO 65 and Austin	RP	\$2.41 M	\$2.41 M			\$2.41 M	●	<a href="#">2658</a>
CO 114	CO 114 Parlin West	RP	\$6.4 M	\$5.7 M		\$5.5 M		◆	<a href="#">0056</a>
CO 125	CO 125 North of Walden	RP	\$5.55 M	\$5.55 M			\$5.55 M	●	<a href="#">2656</a>
	CO 125 South of Cowdrey to CO 127	RP	\$6.42 M	\$6.42 M			\$6.42 M	●	<a href="#">2660</a>
CO 135	Gunnison Valley RTA Storage Facility	T	\$2.2 M	\$2.2 M	✓	\$2.2 M		✓	<a href="#">1110</a>
	CO 135 South of Crested Butte	RP	\$6.82 M	\$6.82 M			\$6.82 M	●	<a href="#">2648</a>
CO 139	CO 139 Douglas Pass North	RP	\$10.2 M	\$9.73 M		\$10.4 M		✓	<a href="#">0053, 0054</a>
	CO 139 between the Garfield/Rio Blanco County Line and Douglas Creek	RP	\$6.78 M	\$6.78 M			\$6.78 M	●	<a href="#">2652</a>
	CO 139 between Douglas Creek and Rangely	RP	\$7.1 M	\$7.1 M			\$7.1 M	●	<a href="#">2655</a>
CO 141	CO 141 (32 Road) Safety and Capacity Improvements	H	\$15 M	\$15 M			\$15 M	●	<a href="#">2573</a>
CO 149	CO 149 Lake City North	RP	\$11.9 M	\$11.9 M		\$12.1 M		✓	<a href="#">0051</a>
CO 300	CO 300 Leadville West + US 24 Leadville South	RP	\$9.2 M	\$5.3 M		\$8.3 M		✓	<a href="#">0049, 0050</a>
CO 317	CO 317 East of Hamilton	RP	\$20.7 M	\$8.08 M			\$8.08 M	■	<a href="#">2776</a>
CO 318	CO 318 Browns Park East from St Line	RP	\$9.01 M	\$9.01 M		\$9.5 M		◆	<a href="#">0048</a>
	CO 318 to Maybell	RP	\$6.74 M	\$6.74 M			\$6.74 M	●	<a href="#">2649</a>
CO 340	CO 340 Safety Improvements	H	\$9 M	\$9 M			\$9 M	●	<a href="#">2572</a>
	CO 348 West of Olathe	RP	\$13.4 M	\$10 M			\$10 M	■	<a href="#">2664, 2665</a>
Non-Corridor Specific	Advancing Transportation Safety (West Vail Pass Auxiliary Lanes)	H	\$3.77 M	\$3.77 M			\$3.77 M	■	<a href="#">2781</a>
	Shoulder Improvements in Mesa County	H	\$1.5 M	\$1.5 M			\$1.5 M	●	<a href="#">2574</a>
	Shoulder Improvements in the Gunnison Valley Transportation Planning Region	H	\$13.6 M	\$13.6 M			\$13.6 M	●	<a href="#">1484</a>
	Regional Transit Service between Montrose and Telluride	T	\$1.2 M	\$0.5 M		\$0.5 M		●	<a href="#">1028</a>
	Snowmass Transit Center	T	\$34 M	\$4.5 M	✓	\$4.5 M		X	<a href="#">1231</a>
	New Essential Bus Service between Grand Junction and Craig and between Craig and Frisco (Proposed Bustang Outrider Service)	T	\$0.4 M	\$0.4 M			\$0.4 M	●	<a href="#">1032, 2125</a>
	Grand Valley Transit Bus Replacement	T	\$2 M	\$1.2 M			\$1.2 M	●	<a href="#">2666</a>
	Grand Valley Transit System Enhancements	T	\$1.25 M	\$1.25 M			\$1.25 M	●	<a href="#">2667</a>
	Grand Valley Transit Maintenance Facility	T	\$1.5 M	\$1.5 M			\$1.5 M	●	<a href="#">2668</a>
	Grand Valley Transit Compressed Natural Gas Storage and Production Facility	T	\$0.54 M	\$0.54 M	✓		\$0.54 M	●	<a href="#">2669</a>
	Mountain Express Transit Center	T	\$1 M	\$1 M		\$0.5 M	\$0.5 M	●	<a href="#">2766</a>
	Gunnison to Montrose Outrider Expansion (Rolling Stock)	T	\$0.9 M	\$0.9 M		\$0.9 M		●	<a href="#">2767</a>
Gunnison Transit Center	T	\$1 M	\$1 M			\$1 M	●	<a href="#">1102</a>	

✓ Completed. ◆ In Construction. ● Planning. ■ Design. X On Hold.

H: Highway | T: Transit | RP: Rural Paving



[Learn More](#) | [YTP.codot.gov](http://YTP.codot.gov) | [YTP@state.co.us](mailto:YTP@state.co.us)

# Project Pipeline

Adopted May 2020 Updated November 2023



## Northeast Projects

	Project Type	Total Est. Project Cost	Total Strategic Funding	Other Funding	Funded FY 19-22	Funded FY 23-26	Planned FY 27+	Project Status	Planning Project ID
<b>Highway &amp; Transit– Region 4</b>									
Interstate 25	Berthoud Mobility Hub	\$10.03 M	\$12.5 M	✓	\$12.5 M			◆	<a href="#">2729</a>
	I-25 North Express Lanes: Segment 7&8 (CO 402 to CO 14) + Centerra-Loveland Mobility Hub	\$602 M	\$291 M	✓	\$145 M			◆	<a href="#">2742, 0058</a>
	Firestone - Longmont Mobility Hub (Phase 1 and Phase 2)	\$24.7 M	\$24.5 M	✓	\$22.3 M			◆	<a href="#">2730, 2731, 2750</a>
	Harmony Road Park-n-Ride Expansion	\$0.5 M	\$0.5 M		\$0.5 M			■	<a href="#">2733</a>
	I-25 and CO 14 Interchange Improvements	\$60 M	\$30.5 M	✓		\$3.5 M	\$27 M	■	<a href="#">2604</a>
	I-25 North Express Lanes: Segment 5 (CO 56 to CO 66)	\$427.5 M	\$45.43 M	✓		\$99.45 M		■	<a href="#">2603</a>
	I-25 North Express Lanes: Segment 6 (CO 56 to CO 402)	\$288 M	\$236 M	✓	\$231 M			◆	<a href="#">0059</a>
	I-25 Bustang Fleet Expansion	\$2.5 M	\$2.5 M				\$2.5 M	●	<a href="#">2690</a>
	North I-25 Transit Fleet Purchase	\$3 M	\$3 M			\$1.5 M	\$1.5 M	●	<a href="#">1802</a>
Interstate 70	I-70 Arriba Rest Area	\$2 M	\$2 M				\$2 M	●	<a href="#">1572</a>
	I-70 Corridor Improvements and Preservation (Bethune to Burlington Phase I)	\$52.2 M	\$36.7 M			\$31.2 M		■	<a href="#">2786</a>
	Rural Roads Bridge Package 1 Rehabilitation and Repair	\$4.28 M	\$4.28 M			\$3.8 M	\$0.48 M	■	<a href="#">2670</a>
	I-70 Replacing Failing Pavement	\$58.6 M	\$58.6 M		\$59.1 M			✓	<a href="#">0090</a>
Interstate 76	I-76 Atwood Bridge Rehabilitation and Repair	\$0.27 M	\$0.27 M				\$0.27 M	●	<a href="#">2671</a>
	I-76 CO 144 West, Westbound Diamond Grind and Slabs MP 55.1 to MP 61.9	\$6.07 M	\$6.07 M		\$8.05 M			✓	<a href="#">0069</a>
	I-76 Corridor Improvements and Preservation	\$26.48 M	\$26.48 M	✓		\$26.48 M		■	<a href="#">1022</a>
	I-76 East of Sterling (Part 2) - Slabs and Diamond Grind	\$8.25 M	\$8.25 M		\$8.25 M			◆	<a href="#">2683</a>
	I-76 New Local Fixed-Route Transit Service in Fort Morgan	\$1.55 M	\$1.55 M			\$1.55 M		●	<a href="#">1426</a>
	I-76 Reconstruction from Fort Morgan to Brush	\$93 M	\$45 M	✓		\$20 M	\$25 M	●	<a href="#">1430, 1428</a>
	I-76 Sterling East: MP 124.7 to MP 128.2	\$18.3 M	\$17.9 M		\$8.05 M			◆	<a href="#">0072</a>
	I-76 US 34 East, Slabs and Diamond Grind both directions from MP 66 to MP 73.9	\$11.5 M	\$11.5 M				\$11.5 M	●	<a href="#">0070</a>
	Outrider Improvements at Brush, Fort Morgan, Hudson, and Lochbuie	\$0.32 M	\$0.32 M		\$0.32 M			●	<a href="#">2490</a>
Outrider Improvements at Sterling	\$0.80 M	\$0.80 M		\$0.80 M			●	<a href="#">2491</a>	
US 6	US 6 Merino to Atwood from MP 391 to MP 398	\$4.32 M	\$4.32 M		\$4.32 M			✓	<a href="#">0064</a>
US 34	Estes Park Transit Improvements	\$1.99 M	\$1.3 M	✓	\$1.3 M			●	<a href="#">2530</a>
	US 34 Transit Planning and Capital between Loveland and Greeley	\$16.5 M	\$13.2 M			\$13.2 M		■	<a href="#">2605</a>
US 36	US 36/28th Street and CO 93/Broadway Intersection Improvements	\$15.12 M	\$15.12 M	✓		\$2 M	\$13.12 M	■	<a href="#">2597</a>
	US 36/Community Drive Roundabout	\$4.7 M	\$0.55 M	✓		\$0.55 M		◆	<a href="#">2770</a>
US 40	US 40 Wild Horse Bridge Rehabilitation and Repair	\$0.82 M	\$0.82 M				\$0.82 M	●	<a href="#">2672</a>
	US 40/US 287 Passing Lanes	\$13.13 M	\$0	✓	(This project has been funded by other funding sources)			✓	<a href="#">1017</a>
US 85	US 85 and US 34 Interchange	\$200 M	\$25.1 M	✓		\$6 M	\$19.1 M	■	<a href="#">2695</a>
	US 85 Corridor Improvements, Brighton to Fort Lupton	\$6.1 M	\$6.1 M			\$6.1 M		■	<a href="#">2600</a>
	US 85 Frontage Road Improvements	\$10 M	\$10 M				\$10 M	●	<a href="#">1443</a>
	US 85/WCR 44 (Peckham)	\$85 M	\$18.06 M		\$18.06 M			◆	<a href="#">2785</a>
US 287	US 287 Corridor Improvements: US 36 to CO 66	\$205 M	\$30 M	✓		\$3 M	\$27 M	●	<a href="#">2602</a>
	US 287 Passing Lanes and Safety Improvements	\$16 M	\$16 M			\$8 M	\$8 M	■	<a href="#">1456</a>
US 385	US 385 between Sand Creek and County Road 29	\$14.69 M	\$14.69 M			\$14.69 M		■	<a href="#">2685</a>
	US 385 Burlington Bridge Rehabilitation and Repair	\$0.17 M	\$0.17 M				\$0.17 M	●	<a href="#">2678</a>
	US 385 Corridor Study Improvements	\$200 M	\$35.28 M	✓			\$35.28 M	●	<a href="#">2416</a>
	US 385 Idalia North Bridge Rehabilitation and Repair	\$0.10 M	\$0.10 M				\$0.10 M	●	<a href="#">2679</a>
	US 385 near Smoky Hill River to near County Road GG from MP 157 to MP 170	\$18.9 M	\$17 M		\$14.8 M			◆	<a href="#">0062</a>
	US 385 Phillips/Yuma County Line South from MP 263.06 to MP 269.35	\$7.4 M	\$7.4 M			\$7.1 M		✓	<a href="#">0063</a>
	US 385 South of Cheyenne Wells	\$12.32 M	\$12.32 M			\$7.1 M	\$5.22 M	◆	<a href="#">2686</a>
US 385 South of Julesburg	\$5.55 M	\$5.55 M				\$5.55 M	●	<a href="#">2687</a>	
CO 1	CO 1 Safety Improvements	\$4 M	\$4 M	✓		\$4 M		■	<a href="#">2771</a>
CO 7	CO 7 Corridor Improvements	\$106 M	\$15.3 M	✓	\$13.44 M	\$1.86 M		■	<a href="#">2596</a>
CO 42	CO 42 Safety and Intersection Improvements	\$40 M	\$14 M	✓		\$6.77 M	\$7.23 M	■	<a href="#">2598</a>
CO 52	CO 52 Prospect Valley from MP 42 - 54.6 & MP 40.75 - 40.77	\$10.6 M	\$0.527 M		\$0.573 M			✓	<a href="#">2754</a>
	CO 52 Prospect Valley from MP 54.58 to MP 60.753	\$8.3 M	\$5.1 M		\$5.1 M			■	<a href="#">0067</a>
	CO 52/CR 59 Roundabout and Safety Improvements	\$32.6 M	\$7.6 M	✓		\$7.6 M		■	<a href="#">2772</a>

✓ Completed. ◆ In Construction. ● Planning. ■ Design. X On Hold.

H: Highway | T: Transit | RP: Rural Paving



[Learn More](#)

[YTP.codot.gov](http://YTP.codot.gov) | [YTP@state.co.us](mailto:YTP@state.co.us)



# Project Pipeline

Adopted May 2020 Updated November 2023



## Northeast Projects

	Project Type	Total Est. Project Cost	Total Strategic Funding	Other Funding	Funded FY 19-22	Funded FY 23-26	Planned FY 27+	Project Status	Planning Project ID
<b>Highway &amp; Transit– Region 4</b>									
CO 59	CO 59 Bridges Rehabilitation and Repair	H	\$1.29 M	\$1.29 M			\$1.29 M	●	<a href="#">2675</a>
	CO 59 Safety Improvements	RP	\$50 M	\$22.76 M			\$22.76 M	●	<a href="#">2498</a>
	CO 59 Sandy Creek Bridge Rehabilitation and Repair	H	\$0.77 M	\$0.77 M	\$5.42 M			✓	<a href="#">2674</a>
	CO 59 Siebert to Cope Bridge Rehabilitation and Repair	H	\$1.18 M	\$1.18 M	\$1.18 M			■	<a href="#">2677</a>
	CO 59 Six Mile Creek Bridge Rehabilitation and Repair	H	\$0.38 M	\$0.38 M		\$0.38 M		●	<a href="#">2676</a>
	CO 59 South of Cope to I-70 from MP 41.071 to MP 67.14	RP	\$17.4 M	\$17.4 M	\$17.8 M			✓	<a href="#">0060</a>
CO 61	CO 61 Sterling East MP 32.3-41.0	RP	\$6 M	\$6 M		\$6 M		■	<a href="#">2774</a>
CO 66	CO 66 Corridor Improvements	H	\$100 M	\$10 M	✓	\$5 M	\$5 M	●	<a href="#">2599</a>
CO 71	CO 71 Big Beaver Creek Bridge Rehabilitation and Repair	H	\$4.78 M	\$4.78 M			\$4.78 M	●	<a href="#">2681</a>
	CO 71 Corridor Improvements	RP	\$200 M	\$20.58 M	✓	\$6.25 M	\$14.33 M	◆	<a href="#">1023</a>
	CO 71 Limon Structures Bridge Rehabilitation and Repair	H	\$0.62 M	\$0.62 M			\$0.62 M	●	<a href="#">2680</a>
	CO 71 North of Brush	RP	\$3.48 M	\$3.48 M			\$3.48 M	●	<a href="#">2689</a>
	CO 71 South of CO 14	RP	\$24.13 M	\$24.13 M		\$6.99 M	\$17.14 M	●	<a href="#">2688</a>
	CO 71 Stoneham Bridge Rehabilitation and Repair	H	\$0.14 M	\$0.14 M			\$0.14 M	●	<a href="#">2682</a>
CO 86	CO 86 Corridor Improvements	H	\$3.2 M	\$2 M	✓	\$0.5 M	\$1.5 M	■	<a href="#">2413</a>
	CO 119 Bus Rapid Transit, Safety and Mobility Improvements	H,T	\$161.7 M	\$64.9 M		\$40 M	\$24.9 M	■	<a href="#">0057</a> , <a href="#">2601</a>
CO 138	CO 138 Sterling North from MP 3 to MP 13.5	RP	\$17.4 M	\$2 M		\$2 M		◆	<a href="#">0061</a>
Non-Corridor Specific	Advancing Transportation Safety (I-76 & CO 144 Interchange Safety Improvements)	H	\$10.5 M	\$5.97 M		\$5.97 M		●	<a href="#">2782</a>
	287/40/94 Bridge Rehabilitation and Repair	H	\$1.68 M	\$1.68 M			\$1.68 M	●	<a href="#">2673</a>
	Bustang Fleet Purchases	T	\$2.5 M	\$2.5 M		\$2.5 M		✓	<a href="#">2736</a>
	Bustang Outrider Fleet Expansion	T	\$2.58 M	\$2.58 M		\$1.5 M	\$1.08 M	●	<a href="#">2773</a>
	Northern Colorado Fleet Maintenance Facility	T	\$17 M	\$3 M		\$3 M		●	<a href="#">2737</a>
	Safer Main Streets Program - Phase 1	H,T	\$9.2 M	\$9.2 M		\$9.2 M		✓	<a href="#">Weblink</a>

✓ Completed. ◆ In Construction. ● Planning. ■ Design. X On Hold.

H: Highway | T: Transit | RP: Rural Paving



[Learn More](#) | [YTP.codot.gov](http://YTP.codot.gov) | [YTP@state.co.us](mailto:YTP@state.co.us)

# Project Pipeline

Adopted May 2020 Updated November 2023



## Southwest Projects

	Project Type	Total Est. Project Cost	Total Strategic Funding	Other Funding	Funded FY 19-22	Funded FY 23-26	Planned FY 27+	Project Status	Planning Project ID
<b>Highway &amp; Transit – Region 5</b>									
US 24	US 24 Intersection Improvements in Buena Vista	\$6 M	\$4 M	✓			\$4 M	●	<a href="#">2039</a>
	Buena Vista Park-n-Ride and Intermodal Facility	\$1.04 M	\$1.04 M		\$1.04 M			◆	<a href="#">1297</a>
US 50	US 50 and US 285 Intersection Reconstruction	\$11 M	\$8.9 M	✓	\$3.9 M	\$4.97 M		■	<a href="#">0073, 0077</a>
	US 50 Corridor Improvements in Poncha Springs	\$2 M	\$2 M				\$2 M	●	<a href="#">2456</a>
	Outrider Improvements at Poncha Springs	\$80 K	\$80 K		\$80 K			●	<a href="#">2752</a>
	Salida Transit Capital Improvements	\$0.6 M	\$0.48 M	✓	\$0.48 M			●	<a href="#">2751</a>
US 62	Outrider Improvements at Placerville, Ridgway, and Telluride	\$0.25 M	\$0.25 M		\$0.25 M			●	<a href="#">2455</a>
US 160	US 160 Towaoc Passing Lanes	\$11.4 M	\$9.2 M		\$9.2 M			✓	0091
	US 160 McCabe Creek Major Structure Replacement	\$11.2 M	\$7.2 M	✓	\$7.2 M			✓	<a href="#">0075</a>
	US 160 Multimodal Improvements in Alamosa	\$8.8 M	\$8.8 M				\$8.8 M	●	<a href="#">2038</a>
	Alamosa Transit Center	\$2.8 M	\$2.8 M				\$2.8 M	●	<a href="#">1309</a>
	US 160 Intelligent Transportation Systems (ITS) Infrastructure	\$30.56 M	\$10 M	✓			\$10 M	●	<a href="#">1303</a>
	US 160 Elmore's Corner East	\$91 M	\$34.53 M	✓		\$27.6 M	\$6.93 M	■	<a href="#">1334</a>
	US 160 East of Fort Garland Safety and Wildlife Mitigation	\$15.8 M	\$9.4 M		\$3.41 M	\$5.96 M		■	<a href="#">1315</a>
	US 160 between New Mexico and Aztec Creek	\$29.8 M	\$19.39 M	✓	\$19.39 M			✓	<a href="#">0078</a>
	Pagosa Springs' Main Street Reconstruction and Multimodal Improvements	\$18.8 M	\$15.7 M		\$15.7 M			■	<a href="#">1339</a>
	Pagosa Springs/Archuleta County Multimodal Facility	\$5.5 M	\$2.68 M	✓	\$1.08 M	\$1.6 M		◆	<a href="#">1326</a>
	Bustang Outrider Service between Pagosa Springs and Durango	\$2.69 M	\$2.69 M			\$2.69 M		●	<a href="#">2523</a>
	Wildlife Mitigation on US 160 between Cortez and Durango (near CR 30.1)	\$4.5 M	\$2.88 M				\$2.88 M	●	<a href="#">2089</a>
	Intersection Improvements at US 160 and Pike Avenue	\$3 M	\$3 M	✓			\$3 M	●	<a href="#">2061</a>
Intersection Improvements at US 160 and CR 30.1 (Phil's World)	\$1.5 M	\$1.5 M				\$1.5 M	●	<a href="#">2087</a>	
US 285	Outrider Improvements at Johnson Village, Moffat, and Alamosa at Adams State	\$0.25 M	\$0.25 M		\$0.25 M			●	<a href="#">2492</a>
	US 285 Safety and Mobility Improvements between Center and Saguache	\$70 M	\$33.68 M			\$20.6 M	\$13.08 M	■	<a href="#">1051</a>
	US 285 Improvements in Saguache	\$0.75 M	\$0.75 M	✓			\$0.75 M	●	<a href="#">2069</a>
US 550	US 550 and US 160 Connection	\$149.3 M	\$68.9 M	✓	\$68.9 M			■	<a href="#">0074</a>
	US 550 Pacochupuk South Roadway Mobility, Safety, and Billy Creek Wildlife Improvements	\$15.7 M	\$13.4 M	✓	\$8.29 M	\$5.1 M		■	<a href="#">0085</a>
	US 550 Billy Creek Safety and Widening	\$37.53 M	\$22.95 M	✓		\$10.53 M	\$12.42 M	■	<a href="#">1133</a>
	Durango Transit Capital Improvement	\$4.5 M	\$4.5 M	✓	\$2.0 M	\$2.5 M		●	<a href="#">1365</a>
CO 15	CO 15 West of La Jara	\$6 M	\$6 M				\$6 M	●	<a href="#">2636</a>
CO 17	Northeast San Luis Valley Transit Service	\$0.56 M	\$0.56 M			\$0.56 M		●	<a href="#">2532</a>
	CO 17 West of Antonito	\$34.6 M	\$7.17 M			\$7.17 M		■	<a href="#">2634</a>
	CO 17 Surface Treatment & Widening Hooper to US 285 Junction	\$26.6 M	\$14.7 M		\$14.7 M			✓	<a href="#">0080</a>
CO 114	CO 114 US 50 East	\$12.7 M	\$12.7 M		\$12 M	\$0.7 M		◆	<a href="#">0084</a>
CO 136	CO 136 East of La Jara	\$2 M	\$2 M				\$2 M	●	<a href="#">2630</a>
CO 141	CO 141 Slickrock and CO 145 Redvale	\$15.4 M	\$10 M		\$10 M			✓	<a href="#">0082</a>
	CO 141 North of Naturita	\$12.1 M	\$4.1 M		\$4.1 M			✓	<a href="#">0083</a>
CO 145	Multimodal Improvements on CO 145	\$5 M	\$3.38 M	✓		\$0.68 M	\$2.7 M	■	<a href="#">1482</a>
	Outrider Improvements at Durango, Mancos, Cortez, Dolores, and Rico	\$0.4 M	\$0.4 M		\$0.4 M			●	<a href="#">2493</a>
	SMART Purchase of Existing Real Property for Admin & Maintenance Facility	\$2.5 M	\$1.86 M	✓	\$1.86 M			✓	<a href="#">1123</a>
	CO 145 Dolores East	\$10.38 M	\$10.38 M				\$10.38 M	●	<a href="#">2778</a>
CO 149	CO 149 North of Creede	\$14.6 M	\$14.4 M		\$14.4 M			✓	<a href="#">0081</a>
CO 151	CO 151 between Ignacio and US 160	\$25.76 M	\$10.57 M	✓		\$10.57 M		■	<a href="#">2635</a>
CO 172	CO 172 between New Mexico to Ignacio	\$10.38 M	\$10.38 M				\$10.38 M	●	<a href="#">2632</a>
CO 370	CO 370 between CO 15 and CO 285	\$14 M	\$1.5 M	✓	\$1.5 M			✓	<a href="#">0079</a>

✓ Completed. ◆ In Construction. ● Planning. ■ Design. X On Hold.

H: Highway | T: Transit | RP: Rural Paving



[Learn More](#) | [YTP.codot.gov](http://YTP.codot.gov) | [YTP@state.co.us](mailto:YTP@state.co.us)

# Project Pipeline

Adopted May 2020 Updated November 2023



## Southwest Projects

		Project Type	Total Est. Project Cost	Total Strategic Funding	Other Funding	Funded FY 19-22	Funded FY 23-26	Planned FY 27+	Project Status	Planning Project ID
<b>Highway &amp; Transit – Region 5</b>										
CO 371	CO 371 between CO 15 and CO 368	RP	\$2.38 M	\$2.38 M				\$2.38 M	●	<a href="#">2637</a>
	Intersection and Pedestrian Improvements at CO 291 and US 50	H	\$8 M	\$7 M			\$7 M		■	<a href="#">2070</a>
	Regional Transit Service between Montrose and Telluride	T	\$2.12 M	\$2.12 M		\$2.12 M			●	<a href="#">1028</a>

Your Transportation Priorities is an evolving list of proposed projects to address the needs and concerns of Coloradans across the state. This list will be updated on an ongoing basis.

Please visit [YTP.codot.gov](http://YTP.codot.gov) for the most up-to-date information.



✓ Completed. ◆ In Construction. ● Planning. ■ Design. X On Hold.

H: Highway | T: Transit | RP: Rural Paving



[Learn More](#) | [YTP.codot.gov](http://YTP.codot.gov) | [YTP@state.co.us](mailto:YTP@state.co.us)