

The Latest on
Transportation
Planning

YOUR
TRANSPORTATION
PRIORITIES

POWERED
BY YOU



10-Year Plan Annual Report

Updated 10-Year Strategic Project Pipeline - November 2023



Construction on US 287 in Lamar.

Follow the Progress

CDOT is committed to maintaining transparency and accountability structures that let the public see the progress made on delivering the 10-Year Plan and how dollars are being spent.

Keep up to date with our progress by viewing our [accountability dashboard](#) on the CDOT website. Updated monthly, this dashboard represents a transparent view into the status and funding of the department's SB 10-Year Plan program of projects.

The 10-Year Plan project tables in the [10-Year Plan document](#) have also been updated to be consistent with the accountability dashboard and are included in this document for ease of reference. These tables will be refreshed quarterly to stay in sync with the accountability dashboard. Please note that the project fact sheets linked in the project tables are still in the process of being updated.

Project Status & Highlights

CDOT has made significant progress in delivering the 10-Year Plan to catch up on critical road and bridge repairs, add travel options, relieve traffic choke points, make critical safety improvements, and bring transit to new corners of the state.

Here are a few highlights:

- CDOT has completed **54 projects from the 10-Year Plan** projects to date, with an additional 40 projects currently under construction.
- **100% of the projects in the first four years of the plan are complete or under construction**, and over half of the full 10-Year Plan is now complete or in progress.
- With progress on the 10-Year Plan well underway and more coming quickly, Coloradans should expect CDOT to continue building the connections we need to keep our state thriving.



US 550-US 160 Gulch A Bridge.

Completed Projects

Region 1 - Metro Denver

Central 70 Project - Express Lane Tolling



Tolling began on the Central 70 Express Lanes on Tuesday, July 11. The Express Lanes, located between I-25 and Chambers Road, are open 24/7 and toll prices range from \$1.50 to \$4.50 with an ExpressToll pass.

Express Lanes:

- Overhead signs display current toll prices, and rates will depend on time of day.
- The Express Lanes are free to motorcyclists, commercial transit vehicles and carpoolers with three or more passengers and a Switchable HOV Transponder.
- Express Lanes are designed to ease traffic congestion across all lanes in a dedicated corridor, including the untolled, or general purpose, lanes.
- Express Lanes span 10 miles in each direction on I-70 from I-25 to Chambers Road.
- Overhead signs will indicate toll prices.
- Express Lanes are free to motorcyclists and commercial transit vehicles.
- Vehicles with four or more axles or longer than 25-feet can use the Express Lanes but will be charged a \$25 surcharge for each trip.

To support neighboring communities along the Central 70 corridor, CDOT is offering an Express Lane tolling equity program to qualifying residents in the Globeville and Elyria-Swansea neighborhoods. Qualifying residents can receive a free ExpressToll pass, transit pass and toll credit through the program.

Completed Projects

Region 1 - Metro Denver

I-25 South Gap (Central Colorado) - 0001



I-25 South Gap CDOT completed all major construction activities of the \$419 million I-25 South Gap project from Monument to Castle Rock on time and on budget in November 2022. What was once a congested bottleneck with limited shoulders is now a modern and much safer stretch of I-25 that connects Denver and Colorado Springs.

- This project will greatly improve safety, offer multi-modal choices and provide long-term travel reliability.
- The project improved 18 miles of I-25 between Castle Rock and Monument by adding an Express Lane in each direction, rebuilding five bridges, building four new wildlife crossings, adding a southbound I-25 truck climbing lane from Greenland Road to Monument Hill and a chain-up station at Larkspur and installing and testing tolling infrastructure.
- Express Lanes and the project's final alignment opened to traffic a year ahead of schedule in December 2021.
 - Express Lane tolling is expected to begin in early 2024.

Completed Projects

Region 1 - Metro Denver

I-70 Over 32nd Avenue Bridge Replacement Project (Central Colorado) - 0087



The Colorado Department of Transportation along with contractor partner Kraemer North America completed the I-70 over 32nd Avenue bridge replacement project in the City of Wheat Ridge in mid-November.

- This state-funded project was the first of several bridge replacement projects along this stretch of I-70 from 32nd Avenue to Harlan Street and is part of CDOT's overall 10-year commitment to replace aged bridges across the region and the state.
- Work on this five-phase project began in February 2022 and was completed on time in mid-November 2023 and within budget at \$9.3 million.

With the completion of this project, the bridges at I-70 over 32nd Avenue are up to modern standards, which improves safety and supports increased traffic on the I-70 corridor.

Completed Projects

Region 2 - Southeast Colorado

US 50 Purcell Drive Interchange - 0009



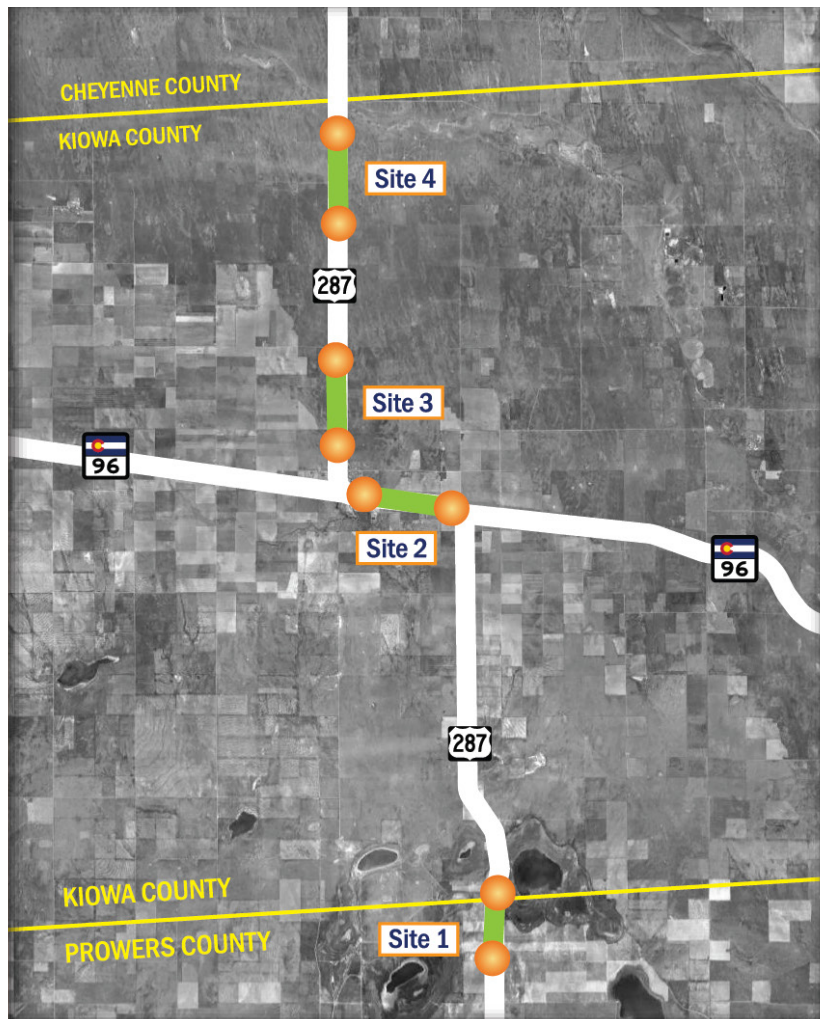
Construction of the new interchange at US Highway 50 and Purcell Boulevard in Pueblo West began in July 2020 and was completed this year.

- The first phase of the project lengthened the third westbound travel lane of US 50 between Pueblo Boulevard and Purcell Boulevard. Improvements included sidewalks, curbs and gutters.
- The \$33 million project significantly increases safety on this highway that carries a high volume of traffic, reduces commuting times for area residents and allows pedestrians to safely navigate the intersection.

Completed Projects

Region 2 - Southeast Colorado

US 287 Passing Lanes between Kit Carson and Lamar



Two northbound passing lanes were added to US 287 between exits 94 and 96 to exits 114 to 116. Two southbound passing lanes were added between exits 110.9 to 112.4 and exits 120 to 122.

- Project included embankment work, removal of existing concrete and asphalt pavements, aggregate base course, concrete paving, traffic control, fencing, signing, striping, and native seeding.
- Work will greatly improve safety for motorists on a two-lane stretch of US 287 between Kit Carson and Lamar by providing space and opportunities for vehicles to safely pass slower-moving traffic.
- Selected as an award winner in the State Roads category by the American Concrete Pavement Association.

Completed Projects

Region 3 - Northwest Colorado

I-70 Frisco to Silverthorne Eastbound Auxiliary Lane - 0043



I-70 Frisco to Silverthorne Eastbound Auxiliary Lane

The project was completed in fall 2023.

- Project was centered around a new auxiliary lane from Frisco to Silverthorne, designed to reduce delays and interstate closures caused by crashes.
- Project complements several other safety improvement projects along the I-70 corridor.

Completed Projects

Region 2 - Northwest Colorado

CO 114 Parlin West/CO 114 Sillsville Overlay in Gunnison to Saguache County - 0056



Crews completed resurfacing, leveling, widening shoulders and upgrading guardrails along 22 miles of Colorado Highway 114 in Gunnison and Saguache counties.

- Project will improve and prolong the life of the road surface.
- Project is part of CDOT's 10-year plan and is one of 38 projects focused on improving rural roads in northwest Colorado.

Completed Projects

Region 4 - Northeast Colorado

North I-25 Express Lanes Berthoud to Fort Collins



This year was a banner one for the North I-25 projects (Segments 6, 7 & 8). On Dec. 15, the final lanes were opened for the public to use, marking 14 years ahead of the original design schedule for three lanes of traffic in each direction from Berthoud (CO 56) to Fort Collins (just shy of CO 14).

- This project includes improving 20-miles of mainline I-25 infrastructure by straightening horizontal and vertical curves, widening shoulders, and adding Express Lanes.
 - In addition to the mainline safety and operational improvements, the projects also completely rebuilt five interchanges, 33 bridges, and incorporated intelligent transportation features.

What started in 2018 with the work from Johnstown to Fort Collins, expanded in scope and funding to include an additional 5.5 miles from Berthoud to Johnstown. Important scope was added to realize DTR's mobility hub vision by incorporating the first two center-load Bustang stops and regional mobility hubs, one at Loveland/Centerra and the other in Berthoud. A third mobility hub is under construction at CO 119.

The first two hubs are expected to be online in spring of 2024 and the CO 119 hub is scheduled to start passenger pick-up in the summer. While substantial construction will be done in 2023 and the express lanes will be opened, tolling will commence in 2024. Drivers will be able to use the open express lanes for free during the testing and back office integration period to ensure tolling and billing runs smoothly at commencement.

Completed Projects

Region 4 - Northeast Colorado

North I-25 Express Lanes Berthoud to Fort Collins

Segment 5 also had a big year in 2023, as a sizable portion of project funding was secured for an additional 6-miles stretch from Mead to Berthoud.

- The safety and operational improvements in the corridor add express lanes in each direction. Design has progressed to 40% and the team is anxiously awaiting a decision by the DOT that will determine if the project is a successful recipient of a federal \$100M grant the team applied for. Segment 5 will begin an expected four-year construction journey, with final completion in 2028.
- When completed for the first time in Colorado's history, there will be at least three lanes in each direction from Denver to Fort Collins.

Completed Projects

Region 5 - Southwest Colorado

US 160 Four Corners to Aztec Creek (Rural Paving Project) - 0078



In June of 2023, US Highway 160 was successfully resurfaced from the Four Corners to Aztec Creek. The 9-mile stretch of highway included a full-depth reclamation and reconstruction.

- All layers of the roadway were pulverized and reused in a new hot mix asphalt paving.
- Aspects of the project included shoulder widening, construction of additional passing lanes and acceleration/deceleration lanes at the CO Highway 41 junction.
- Crews also performed bridge maintenance, culvert repairs, new pavement markings and signing.
- This two-season rural paving project significantly improved a rough and deteriorated road surface, which enhances safety and saves motorists in fuel efficiency and vehicle operating costs.

Projects Underway

(Starting in 2024)

Region 1 - Metro Denver

Floyd Hills (Central Colorado) - 0004



Construction started in fall 2022 with a wildlife crossing and roundabouts. With construction beginning on the mainline in the summer of 2023, the project will make much-needed improvements along eight miles of I-70.

- This stretch has not seen significant improvements since its original construction in the 1960s. Today, maintaining the corridor’s aging infrastructure is increasingly expensive, time-consuming and disrupts travel for communities and the public.
- I-70 is the lifeline for commerce and tourism that supports rural mountain town economies and the improvements brought by this project are essential to everyone who relies on I-70.
- Major elements of the project include adding a third westbound travel lane on I-70, constructing a missing frontage road connection, adding an eastbound auxiliary lane to the uphill section of Floyd Hill, improving interchanges and intersections, improving design speeds, stopping sight distance on horizontal curves and improving the Clear Creek Greenway.
- Improvements also include environmental mitigation for wildlife connectivity, air and water quality, stream conditions and recreation.
- Early action projects are underway, and these improvements will save users travel time for weekend trips and decrease the number and severity of crashes through more consistent traffic flow and speeds.

In September 2022, CDOT was awarded a \$100 million grant from the Infrastructure Investment and Jobs Act (IIJA). This is more than CDOT has received through any prior single grant from the U.S. Department of Transportation.

Projects Underway

(Completing in 2024)



Region 2 - Southeast Colorado

Military Access, Mobility, & Safety Improvement Project, I-25 - 0015



I-25 North to South along the Colorado Spring Corridor

I-25 is the backbone of Colorado's vehicular mobility and freight movement and is the major north to south transportation corridor in Colorado Springs.

- Improvements to I-25 addressed with this project will significantly improve mobility and safety outcomes along one of the state's busiest interstate corridors, located along an approximately 7.5-mile segment. The project begins at South Academy Boulevard and extends to the Santa Fe Avenue (CO 85/87) exit at Fountain (MP 128), which exits to Gate 19 of Fort Carson.
- Replacement of bridges crossing South Academy Boulevard, which have exceeded their useful life, will result in significant reductions in operations and maintenance costs over the life of these assets and ensure reliability for passenger and freight vehicles utilizing the corridor.
- Safety Improvements provided through the Project will widen both the inside and outside shoulders to twelve feet along the I-25 corridor between the Santa Fe and South Academy Boulevard Interchanges. These improvements will improve safety by allowing more room for emergency maneuvers and providing safer refuge for stopped vehicles, first responders, and work crews.
- Newly constructed concrete pavement driving lanes will be the I-25 pavement surface, from south of the Santa Fe Avenue interchange to the South Academy Boulevard interchange. Concrete pavement will ensure a substantially longer state of good repair for these lanes.

Projects Underway

(Starting in 2024)



Region 3 - Northwest Colorado

I-70 East of 1st Street to 15th Street (Northwest Colorado) - 0041

Construction is anticipated to begin in 2024 for the I-70B South of Rood Avenue project, which is Phase 6 in a series of improvements along the I-70B corridor in Grand Junction.

- Final design addresses congestion; brings multimodal improvements that will allow for a safer and more comfortable travel experience for cars, pedestrians and cyclists; and provides effective business access along the corridor.
- Safety improvements were identified during the 2008 Environmental Assessment and previous public engagement efforts. These and other safety and mobility improvements are part of CDOT's 10-year plan for improvements statewide.

Projects Underway

(Starting in 2024)



Region 4 - Northeast Colorado

I-70 East to the State Line



The need for work and attention on Interstate 70 east of Denver to the state line has been growing over the years. Several projects on I-70 have focused on the areas of the biggest need, including a major \$51M project from Arriba to Flagler that was completed in 2020.

- This project replaced 15 miles of failing asphalt with concrete and included rehabilitation of two structures.
- Currently in construction, is the rehabilitated eight structures between Agate and Limon. This included polyester concrete overlay on the bridge decks to provide a more durable surface.

In Spring of 2024, a \$46.1 million construction project will begin from Bethune to the state line that will fix a road that has been an area of intense need and public interest for much of this year.

Specifically, this project will address the west and eastbound lanes between Bethune and Burlington and the west bound lanes only between Burlington and the state line. This 22.3 mile stretch will include providing a hot mix asphalt overlay of the aforementioned sections, minor bridge rehabilitation, drainage and guardrail improvements.

Projects Underway

(Starting in 2024)



Region 5 - Southwest Colorado

US 160 Fort Garland Wildlife Mitigation



A wildlife mitigation project will take place on US Highway 160 in Costilla County, between Fort Garland and La Veta Pass. Construction for this 10-year plan project is scheduled to begin in summer of 2024.

- Project will improve safety for both wildlife and motorists while maintaining and fostering habitat connectivity for western Colorado's mule deer and elk population. Crews will install three wildlife underpasses, 8-foot-tall exclusion fencing along both sides of the highway, earthen escape ramps for wildlife to jump to safety out of the fenced corridor and deer guards or gates installed at vehicle access points.
- Project includes intersection upgrades US 160 & Trinchera Ranch Road with acceleration and deceleration lanes to improve vehicle turning movements.

Project Pipeline

Adopted May 2020 Updated November 2023



CDOT's 10-Year Plan represents projects proposed for strategic state and federal legislative funding. The table indicates:

Project Type: This indicates the primary project type, with projects classified as Highway (H), Highway with Transit (H,T), Rural Paving (RP) or Transit (T).

Total Est. Project Cost: This is a planning-level estimate of how much a project will cost in total.

Total Strategic Funding: This indicates how much has been approved for funding or is proposed or planned for funding from state strategic funding sources (SB-1, SB-267, and SB-260) and federal strategic funding sources (federal stimulus and IJA). Note: Sometimes the total project cost is more than what is being proposed for strategic funding, especially for the larger projects. This indicates that CDOT may need to leverage the strategic funds with other funding sources to deliver the project.

Other Funding: A check mark in this box indicates other funding sources (state, federal, local, grants, enterprise funding, etc.) will be utilized to deliver the project.

Funded FY 19-22: This shows projects funded by SB-1, SB-267, SB-260, and federal stimulus (2021) during the first four years of the 10-Year Plan, fiscal years 2019-2022.

Funded FY 23-26: This shows the projects funded for the next four years of the 10-Year Plan, in fiscal years 2023-2026.

Planned FY 27+: This shows the projects planned for the outyears of the 10-Year Plan, fiscal years 2027 and beyond. These projects have yet to be prioritized or approved for funding by the Transportation Commission.

Project Status: This shows the current status of projects, whether completed, under construction/in progress, and projects that are set to go to construction within the next year. Planning Project ID: This unique planning ID can be used to find more information about each project, including more detailed project fact sheets.

NOTE: The fact sheets were last updated September of 2022. Further updates are anticipated to occur in Spring of 2024.

Central Projects

	Project Type	Total Est. Project Cost	Total Strategic Funding	Other Funding	Funded FY 19-22	Funded FY 23-26	Planned FY 27+	Project Status	Planning Project ID
Highway & Transit– Region 1									
Interstate 25	Castle Rock Mobility Hub	\$16.7 M	\$13.47 M	✓	\$10.5 M	\$2.97 M		■	2714
	Lone Tree Mobility Hub	\$20 M	\$10 M	✓	\$10 M			■	2744
	I-25 North between 84th Avenue and 104th Avenue	TBD	\$110 M	✓	\$4 M	\$16 M	\$90 M	■	2584, 2642
	I-25 South Gap	\$439.47 M	\$278.78 M	✓	\$278 M			✓	0001
	I-25 Interchange Reconstruction at Speer Boulevard and 23rd Avenue	\$75 M	\$15 M	✓	\$3.5 M	\$11.5 M		●	2575
	I-25 and CO 7 Interchange Mobility Hub	\$15.25 M	\$14 M		\$14 M			■	2694
	I-25 at Belleview Avenue Interchange - Phase 1	\$110 M	\$22 M	✓			\$22 M	●	2588
	I-25 Central Non-Capacity Safety and Operational Improvements	TBD	\$35 M	✓			\$35 M	●	2576
Burnham Yard Acquisition	\$50 M	\$15 M	✓	\$15 M			✓	2779	
Interstate 70	I-70/Harlan Bridge Replacement	\$25.6 M	\$21.9 M	✓	\$21.9 M			◆	0086
	I-70 Corridor-West Metro Bridges	\$67 M	\$33.9 M	✓	\$35.2 M			◆	0087
	I-70 Peak Period Shoulder Lanes	\$122.2 M	\$89.5 M	✓	\$89.5 M			✓	0005
	I-70 West: Floyd Hill	\$700 M	\$340 M	✓	\$191.8 M	\$148.2 M		◆	0004
	Idaho Springs Mobility Hub	\$13.2 M	\$6.33 M	✓	\$6.33 M			●	2716
	I-70 and Kipling Street Interchange	\$70 M	\$30 M	✓	\$2.5 M		\$27.5 M	●	2580
	I-70 Climbing Lane from Bakerville to the Eisenhower Tunnel	\$32 M	\$25 M	✓			\$25 M	X	2582
	Eisenhower-Johnson Memorial Tunnel Repairs and Maintenance	\$156 M	\$50 M	✓	\$50 M			◆	2583
	I-70 Escape Ramp Improvements	\$29 M	\$14.5 M	✓	\$13 M			◆	2593
	I-70 Bustang Pegasus Park-n-Rides	\$12 M	\$12 M		\$4 M	\$3 M	\$5 M	■	2753
I-270	I-270 Improvements and Congestion Relief from I-76 to I-70	\$600 M	\$200 M	✓	\$30 M	\$144.5 M	\$25.5 M	■	0002
US 6	Vasquez Boulevard Improvements	\$27 M	\$10 M	✓		\$10 M		■	2585
	US 6 and Wadsworth Boulevard Interchange	\$135 M	\$60 M	✓	\$40 M	\$20 M		◆	2578
US 85	US 85 Corridor Improvements between Sedalia and Meadows Parkway in Castle Rock	\$58 M	\$37 M	✓			\$37 M	■	2587
US 285	US 285 Corridor Improvements near Pine Junction	TBD	\$60 M				\$60 M	■	2581
CO 7	CO 7 Priority Intersection Improvements	\$30 M	\$20 M				\$20 M	●	2586, 2641
CO 30	CO 30 Improvements between Quincy Road and Airport Road	TBD	\$25 M				\$25 M	●	2589
C 470	C-470: US 285 to Morrison Road Interchange Reconstruction	\$56 M	\$56 M				\$56 M	●	2579
Non Corridor Specific	Advancing Transportation Safety (Vasquez Boulevard Improvements: 60th Avenue to 62nd Avenue Project)	\$8.56 M	\$8.56 M			\$8.56 M		■	2784
	Vision Zero Priority Improvements	\$25 M	\$15 M			\$15 M		■	2691
	Safer Main Streets Program	\$75 M	\$67.3 M	✓	\$68.9 M			◆	Weblink
	Bustang Heavy Maintenance Facility	\$17 M	\$9.5 M		\$0.95 M	\$3.55 M	\$5 M	●	2715
	Noise Wall Maintenance	\$36.6 M	\$29.7 M	✓	\$29.7 M			◆	2594
	Bustang Fleet Purchases	\$4.425 M	\$4.425 M		\$4.425 M			■	2718
	Regionwide Bottleneck Reduction	TBD	\$25 M	✓			\$25 M	●	2590
	Regionwide Signal and Ramp Meter Upgrades	TBD	\$17 M	✓			\$17 M	■	2592
	Regionwide Trail Grade Separations and Crossings Improvements	\$10 M	\$10 M				\$10 M	■	2595
	Regionwide Bridge Rehabilitation and Maintenance	\$500 M	\$20 M	✓			\$20 M	■	2697
Regionwide Arterial BRT and Transit Improvements	\$480 M	\$170 M		\$3 M	\$72 M	\$95 M	■	2638	

✓ Completed. ◆ In Construction. ● Planning. ■ Design. X On Hold.

H: Highway | T: Transit | RP: Rural Paving



Learn More YTP.codot.gov | YTP@state.co.us

Project Pipeline

Adopted May 2020 Updated November 2023



Southeast Projects

	Project Type	Total Est. Project Cost	Total Strategic Funding	Other Funding	Funded FY 19-22	Funded FY 23-26	Planned FY 27+	Project Status	Planning Project ID
Highway & Transit– Region 2									
Interstate 25	I-25 Paving and Mobility - Fillmore to Garden of the Gods	\$68.6 M	\$48.3 M	✓	\$43 M			◆	0016
	I-25 Colorado Springs Ramp Metering - Phase 2	\$6.2 M	\$6.2 M		\$6 M			◆	0017
	Outrider Improvements at Tejon Park-n-Ride	\$80 K	\$80 K		\$80 K			●	2725
	Woodmen Road Mobility Hub	\$3 M	\$6 M		\$6 M			■	2720
	Monument Park-n-Ride	\$0.5 M	\$0.5 M		\$0.5 M			●	2721
	Bijou Street Storage and Maintenance Facility	\$7.5 M	\$2.8 M		\$3 M			✓	2722
	I-25 through Pueblo New Freeway	\$159 M	\$91 M	✓	\$76.57 M	\$14.43 M		■	0014, 2560
	I-25 and CO 94 Safety and Mobility Improvements (MAMSIP)	\$150.7 M	\$39.9 M	✓	\$44.3 M			◆	0015
	I-25 Raton Pass Safety and Interchange Improvements	\$21 M	\$18.7 M		\$14 M			◆	0013
	I-25 at Exit 104 - Dillon Drive Improvements	\$15 M	\$8.4 M	✓	\$1.5 M	\$3 M		◆	2565
	North Pueblo Mobility Hub	\$6 M	\$6 M		\$6 M			X	2723
	Pueblo Administrative and Maintenance Facility	\$20 M	\$2.18 M	✓	\$2.18 M			●	2724
	Southwest Chief Thru-Car Study - CRISI Grant Match	\$0.45 M	\$50 K	✓	\$50 K			◆	2734
	South Central Storage and Maintenance Facility	\$3.29 M	\$2.63 M	✓	\$2.63 M			●	1270
	Outrider Improvements at Colorado City Corners, Walsenburg, and Aguilar	\$0.2 M	\$0.2 M		\$0.2 M			●	2497
	Bustang Fountain Mobility Hub	\$8.2 M	\$8.2 M			\$8.2 M		●	2703
	I-25 Exit 108 (Purcell Boulevard) Replace Single Box Culvert Crossing Under I-25	\$30 M	\$11 M			\$2 M	\$9 M	■	2562
	I-25C and US 160 Intersection Improvements	\$5 M	\$5 M			\$5 M		■	1502
	I-25 Business Route through Walsenburg	\$2.83 M	\$2.83 M				\$2.83 M	●	2616
	I-25C North to I-25	\$8.6 M	\$5 M			\$5 M		■	2757
Implement Recommendations from Trinidad Traffic Study	\$5 M	\$5 M			\$5 M		■	2758	
Safety and Operational Improvements Exit 135 South Academy to Exit 138 Circle/Lake	\$48.7 M	\$21.8 M	✓			\$21.8 M	●	2759	
US 24									
US 24 Shoulder Widening	H	\$10.5 M	\$10 M				\$10 M	●	1642
US 24 East Widening	H	\$54 M	\$50 M			\$50 M		■	2548
US 24 West over Ridge Road (Overpass)	H	\$35.5 M	\$33.4 M				\$33.4 M	■	2549
New Regional Fixed-Route Transit Service in Teller County	T	\$0.6 M	\$0.6 M			\$0.6 M		●	1068
US 24 between Trout Creek Pass and Hartsel	RP	\$7.14 M	\$7.14 M				\$7.14 M	●	2610
US 24 Hartsel to East of Wilkerson Pass, US 24 East of Wilkerson Pass to Lake George, US 24 between Lake George and Divide (MP 245..9 - 275.1)	RP	\$12.9 M	\$12.9 M			\$12.9 M		■	2611, 2612, 2613
US 50									
US 50 and Purcell Drive Interchange	H	\$50 M	\$38.9 M	✓	\$38.69M			✓	0009
US 50 Texas Creek East	RP	\$8.4 M	\$8.4 M		\$9.8 M			✓	0022
Outrider Improvements at Pueblo West	T	\$80 K	\$80 K		\$80 K			●	2726
Outrider Improvements at Lamar, Fort Lyon, Las Animas, La Junta, Swink, Rocky Ford, Manzanola, & Fowler	T	\$0.6 M	\$0.6 M		\$0.6 M			●	2495
Outrider Improvements at Cañon City and Cotopaxi	T	\$0.16 M	\$0.16 M		\$0.16 M			●	2496
Southwest Chief Track Improvements - RAISE Grant Match	T	\$27.3 M	\$1 M	✓	\$1 M			◆	2735
Expanded Golden Shuttle Fixed-Route Service in Fremont County	T	\$1.33 M	\$1.33 M				\$1.33 M	●	1070
Expanded Local Fixed-Route Service between Florence-Penrose-Cañon City	T	\$0.76 M	\$0.76 M				\$0.76 M	●	1071
Business US 50 Drainage Improvements at 36th Lane	H	\$7.5 M	\$5.5 M				\$5.5 M	●	2563
La Junta Multimodal Transit Center	T	\$4 M	\$4 M				\$4 M	●	1285
La Junta to Fowler Fixed-Route Service	T	\$0.6 M	\$0.6 M				\$0.6 M	●	1287
City of La Junta Bus Barn Rehabilitation	T	\$0.2 M	\$0.2 M			\$0.2 M		●	1288
Expand Deviated Fixed-Route Services in La Junta	T	\$0.4 M	\$0.4 M				\$0.4 M	●	1289
New Regional Transit Service between Campo and Lamar; Expanded Baca County Demand Response Services	T	\$0.5 M	\$0.5 M			\$0.5 M		●	1049
US 50 Passing Lanes between Fowler and Kansas State Line	H	\$15 M	\$15 M			\$15 M		●	1614
Realign US 50 as a Part of US 287 Reliever Route Project	H	\$34.2 M	\$34.2 M				\$34.2 M	●	1617
US 50 between Penrose and the Fremont/Pueblo County Line	RP	\$9.14 M	\$9.14 M				\$9.14 M	●	2607
US 50 Safety Improvements west of Cañon City	H	\$20 M	\$8.5 M	✓			\$8.5 M	■	2760
US 160									
US 160 Curve Alignment	H	\$1 M	\$1 M				\$1 M	●	1628
US 160 Freight and Safety Improvements	H	\$13.2 M	\$13.2 M				\$13.2 M	●	1508
Kim Transit Garage	T	\$0.5 M	\$0.5 M			\$0.5 M		●	1044
Expanded Regional Transit Service for Branson, Kim, and Baca County	T	\$0.6 M	\$0.6 M			\$0.6 M		●	1045
Baca County Bus Facility	T	\$0.4 M	\$0.4 M			\$0.4 M		●	1048
US 160 Walsenburg West	RP	\$1.92 M	\$1.92 M				\$1.92 M	●	2617
US 160 between North La Veta Pass and Junction CO 12	RP	\$10.5 M	\$10.5 M		\$9.9 M			✓	2621
US 160 between I-25 Business Route (Walsenburg) and I-25	RP	\$0.64 M	\$0.64 M				\$0.64 M	●	2622
US 160 between Pritchett and Kim	RP	\$15 M	\$15 M			\$15 M		■	2626
US 160 between Springfield and CO 100 and CO 100 from MP 0 to MP 0.42	RP	\$6.8 M	\$6.8 M		\$6.8			✓	0030
US 285									
US 285/CO 9 Intersection Improvement with Bridge Widening	H	\$33.7 M	\$15.4 M	✓	\$7 M			◆	0008
Fairplay Mobility Hub	T	\$4 M	\$4 M		\$4 M			●	1084
US 285 South of Bailey to Park/Jefferson County Line	RP	\$15.8 M	\$6.85 M				\$6.85 M	■	2609
US 287									
US 287 Lamar Downtown PCCP - Phase 1 and Phase 2	H	\$31.2 M	\$17 M		\$18 M			◆	0010
US 287 Bridge Preventative Maintenance - Phases 1 and 2	H	\$2.9 M	\$2.9 M		\$5 M			✓	0007
Prowers County Bus Barn Office Extension	T	\$0.111 M	\$0.111 M	✓	\$0.111 M			◆	2485
Kiowa County Bus Storage Facility	T	\$0.35 M	\$0.35 M	✓	\$0.35 M			●	1281

✓ Completed. ◆ In Construction. ● Planning. ■ Design. X On Hold.

H: Highway | T: Transit | RP: Rural Paving



Learn More YTP.codot.gov | YTP@state.co.us

Project Pipeline

Adopted May 2020 Updated November 2023



Southeast Projects

	Project Type	Total Est. Project Cost	Total Strategic Funding	Other Funding	Funded FY 19-22	Funded FY 23-26	Planned FY 27+	Project Status	Planning Project ID
Highway & Transit– Region 2 (continued)									
US 350	US 350 Shoulder Widening and Safety Improvements	H	\$5.5 M	\$5.5 M			\$5.5 M	●	1511
	US 350 between La Junta and Delhi	RP	\$10 M	\$10 M		\$10 M		■	2627
US 385	Passing Lanes on US 385	H	\$5 M	\$5 M			\$5 M	●	1631
	US 385 North of Sheridan Lake to Kiowa/Cheyenne County Line	RP	\$4.96 M	\$4.96 M			\$4.96 M	●	2628
	US 385 between Granada and Junction CO 96	RP	\$13.19 M	\$13.19 M			\$13.19 M	●	2629
CO 10	CO 10 Shoulder Widening	H	\$10 M	\$10 M			\$10 M	●	1626
	CO 10 Walsenburg East	RP	\$15.9 M	\$15.9 M		\$15.9 M		●	2618
	CO 10 Otero/Pueblo County Line East	RP	\$1.56 M	\$1.56 M			\$1.56 M	●	2624
CO 12	CO 12 PEL Implementation - Shoulder Widening (Southern Mountain Loop Trail)	H	\$10 M	\$10 M	\$4 M		\$6 M	■	1039
	Expanded Regional Transit Service between Trinidad and CO 12 Communities	T	\$2 M	\$2 M			\$2 M	●	1267
	CO 12 ADA Ramps and Sidewalk Improvements in La Veta and Trinidad	H	\$2.25 M	\$1 M			\$1 M	■	1493
	CO 12 Junction US 160 South	RP	\$2.81 M	\$2.81 M			\$2.81 M	●	2619
	CO 12 East of Valdez to Trinidad	RP	\$6.26 M	\$6.26 M			\$6.26 M	●	2620
CO 21	CO 21 and Research Parkway Interchange	H	\$37.4 M	\$28 M	✓	\$19.5 M		✓	0011
	CO 21 and Airport Road DDI Interchange Construction	H	\$55.5 M	\$49 M		\$4 M	\$45 M	■	2547
CO 47	CO 47 Four-Lane Extension to US 50	H	\$8 M	\$8 M			\$8 M	●	2561
CO 67	Cripple Creek Administration and Operations Facility	T	\$2.2 M	\$2.17 M	✓	\$0.12 M	\$2.05 M	■	1075, 1078
	CO 67 Passing Lanes	H	\$10.7 M	\$10.5 M			\$10.5 M	●	1010
	CO 67 from CO 96 to Florence	RP	\$6 M	\$6 M		\$5.8 M		✓	0027
	CO 67 between Florence and US 50	RP	\$2 M	\$2 M			\$2 M	●	2614
	CO 67 North of Woodland Park	H	\$10 M	\$6.5 M	✓		\$6.5 M	■	2761
CO 69	CO 69 between Westcliffe and Fremont County Line	RP	\$6.8 M	\$6.8 M		\$6.97 M		✓	0026
	CO 69 Shoulder and Safety Improvements	H	\$10 M	\$10 M			\$10 M	●	2567
	Westcliffe Vehicle Housing	T	\$0.46 M	\$0.46 M			\$0.46 M	●	1079
CO 71	CO 71 Passing Lanes	H	\$6 M	\$6 M		\$6 M		■	1633
CO 96	CO 96 Shoulder Widening	H	\$10.5 M	\$10.5 M			\$10.5 M	●	1665
	CO 96 and CO 71 Intersection Improvements	H	\$1.8 M	\$0.8 M			\$0.8 M	■	1625
	CO 96 West of Pueblo	H	\$11.5 M	\$11.5 M			\$11.5 M	●	2559
	Expand Crowley County Transit Service in Crowley County and Sugar City	T	\$0.4 M	\$0.4 M			\$0.4 M	●	1294
	CO 96 East of Ordway to Arlington	RP	\$10 M	\$0.17 M		\$0.18 M		◆	0024
	CO 96 near Eads to Sheridan Lake	RP	\$17 M	\$17 M		\$21.4 M		◆	0025
CO 101	CO 101 between Las Animas and Toonerville	RP	\$9.83 M	\$9.83 M			\$9.83 M	●	2625
CO 109	CO 109 La Junta Bridge Repair over US 50B	H	\$7.46 M	\$3.5 M		\$3 M		◆	0012
	CO 109 between US 160 and Otero County Line	RP	\$13 M	\$5.1 M		\$5.1 M		✓	0029
CO 115	CO 115 Safety and Paving Improvements	H	\$57.5 M	\$43.6 M		\$43.6 M		◆	0018
	CO 115 Shoulders and Safety Improvements	H	\$10.5 M	\$10.5 M		\$3.5 M	\$7 M	■	1080
	New Interregional Transit Service between Cañon City-Florence-Colorado Springs	T	\$0.84 M	\$0.84 M		\$0.84 M		●	1081
	CO 115 between Canon City and US 50	RP	\$8.01 M	\$8.01 M			\$8.01 M	●	2608
CO 116	CO 116 between US 287 and Kansas Border	RP	\$11.5 M	\$11.5 M		\$12.5 M		✓	0023
CO 120	CO 120 East of Florence to US 50	RP	\$2.9 M	\$2.9 M			\$2.9 M	●	2615
CO 194A	CO 194A Surface Treatment and Drainage Improvements	RP	\$8 M	\$8 M		\$5.98 M		◆	0028
CO 389	CO 389 between CO/NM State Line and Junction US 160	RP	\$5.28 M	\$5.28 M			\$5.28 M	●	2623

✓ Completed. ◆ In Construction. ● Planning. ■ Design. X On Hold.

H: Highway | T: Transit | RP: Rural Paving



[Learn More](#)

YTP.codot.gov | YTP@state.co.us

Project Pipeline

Adopted May 2020 Updated November 2023



Southeast Projects

	Project Type	Total Est. Project Cost	Total Strategic Funding	Other Funding	Funded FY 19-22	Funded FY 23-26	Planned FY 27+	Project Status	Planning Project ID	
Highway & Transit– Region 2 (continued)										
Non-Corridor Specific	Advancing Transportation Safety	H	\$4.74 M	\$4.74 M		\$4.74 M		■	2780	
	Bridge Preventative Maintenance - CO 12 and CO 194	H	\$1.8 M	\$1.8 M		\$2.5 M		✓	0019	
	Bridge Preventative Maintenance on I-25, CO 16, and US 24 in Colorado Springs	H	\$1.8 M	\$1.8 M		\$2.5 M		✓	0020	
	Bustang Fleet Purchases for Region 2	T	\$1.25 M	\$1.25 M		\$1.25 M		✓	2755	
	Colorado Springs Transit Center	T	\$20 M	\$8 M	✓	\$8 M		●	2719	
	High-Capacity Corridor Improvements in El Paso County	T	\$0.85 M	\$0.85 M			\$0.85 M	●	2552	
	Transfer Facilities for Regional Transit Services (Cripple Creek, Cañon City, Woodland Park)	T	\$0.39 M	\$0.39 M			\$0.39 M	●	1004	
	Mobility Management and Expansion of Upper Arkansas Area Council of Governments (UAACOG)	T	\$0.1 M	\$0.1 M			\$0.1 M	■	1635	
	Expanded Regional Transit Service between Walsenburg-La Veta-Gardener-Cuchara	T	\$1.4 M	\$1.4 M			\$1.4 M	●	1038	
	Expanded Regional Transit Service in Kiowa County	T	\$0.4 M	\$0.4 M			\$0.4 M	●	1047	
	Mountain Metropolitan Transit Fixed-Route Service Expansion - Stage 1	T	\$7.8 M	\$4.8 M				\$4.8 M	●	2556
	Pueblo Transit Fixed-Route Bus/Vehicle Replacements	T	\$7.24 M	\$7.24 M			\$3.9 M	\$3.34 M	●	2566
	Fort Carson Circulators/Service to PCC	T	\$1.5 M	\$1.1 M	✓		\$1.1 M		●	2762
Academy Boulevard/Hancock Expressway Transfer Center	T	\$3 M	\$3 M				\$3 M	●	2763	

✓ Completed. ◆ In Construction. ● Planning. ■ Design. X On Hold.

H: Highway | T: Transit | RP: Rural Paving



[Learn More](#) | YTP.codot.gov | YTP@state.co.us

Project Pipeline

Adopted May 2020 Updated November 2023



Northwest Projects

	Project Type	Total Est. Project Cost	Total Strategic Funding	Other Funding	Funded FY 19-22	Funded FY 23-26	Planned FY 27+	Project Status	Planning Project ID
Highway & Transit – Region 3									
Interstate 70	I-70 Auxiliary Lane Frisco East to Silverthorne	\$38.4 M	\$28.5 M		\$25 M			✓	0043
	I-70 West: Vail Pass Safety Improvements - Phase 1	\$458.1 M	\$83.5 M	✓	\$33.5 M	\$ 50 M		◆	0042, 1161
	Summit County Transit Operations Center (Design & Engineering)	\$0.425 M	\$0.425 M	✓	\$0.425 M			✓	1165
	I-70B East of 1st Street to 15th Street - Phase 5	\$20.8 M	\$6 M		\$16 M			✓	0041
	North Avenue Transit Infrastructure Improvements	\$5.7 M	\$1.5 M		\$1.5 M			■	2727
	Grand Junction Mobility Hub	\$18.8 M	\$4.08 M	✓	\$4.08 M			■	2747
	I-70 and CO 9 (Exit 203) Interchange Improvements	\$44.5 M	\$44 M			\$25 M	\$19 M	■	1157
	Vail Intermodal Site	\$15 M	\$6.4 M			\$6.4 M		●	1903
	I-70 Interchange Improvements in Garfield County	\$17.5 M	\$15 M	✓		\$11.18 M	\$4.325 M	■	1171
	I-70 West: Dowd Canyon Safety and Capacity Improvements	\$14 M	\$14 M				\$14 M	●	1952
	I-70 Glenwood Canyon Critical Asset Repair	\$50 M	\$50 M				\$50 M	●	1151
	I-70 Business (Pitkin Avenue) Corridor Improvements between First Street and 15th Street	\$44.7 M	\$39.19 M	✓	\$8.11 M	\$31.08 M		◆	2568
	I-70 Business Corridor Improvements between 32 Road and I-70 in Grand Junction	\$5 M	\$5 M				\$5 M	●	2569
	I-70 Business Corridor Improvements between Main Street and 32 Road	\$14 M	\$14 M				\$14 M	●	2570
US 6	US 6 Fruita to Palisade Safety Improvements	\$60.3 M	\$49.4 M		\$35.95 M	\$13 M		■	0031, 2571
US 24	US 24 Safety Improvements between Minturn and Leadville	\$9.6 M	\$9.6 M				\$9.6 M	●	1203
	US 24 North of Leadville	\$9.1 M	\$8.4 M			\$8.4 M		■	2777
US 34	US 34 Grand Lake	\$8.97 M	\$8.97 M		\$8.97 M			✓	0047
US 40	Winter Park Transit Maintenance Facility - Phases 1 and 2	\$25.2 M	\$2.8 M	✓	\$2.8 M			✓	1244
	Outrider Improvements at Winter Park and Tabernash	\$0.16 M	\$0.16 M		\$0.16 M			●	2749
	Outrider Improvements at Fraser, Granby, Kremmling, and Hot Sulphur Springs	\$0.3 M	\$0.3 M		\$0.3 M			●	2494
	Outrider Improvements at Steamboat Springs, Milner, Hayden, and Craig	\$0.32 M	\$0.32 M		\$0.32 M			●	2748
	US 40 Capacity Improvements around Fraser	\$27 M	\$25 M				\$25 M	●	1259
	US 40 Red Dirt Hill Safety Improvements	\$40 M	\$27 M			\$7 M	\$20 M	■	2765
	US 40 Shoulder Improvements West of Kremmling	\$21.6 M	\$21 M				\$21 M	●	1258
	US 40 Passing Lanes West of Kremmling	\$12.3 M	\$12 M			\$12 M		■	1710
	US 40 Passing Lanes between Craig and Steamboat Springs	\$57.2 M	\$55 M				\$55 M	●	1712
	US 40 and Downhill Drive Intersection Improvements	\$8.8 M	\$8 M	✓		\$8 M		■	1729
	US 40/US 34 Intersection Improvement	\$5 M	\$5 M				\$5 M	●	1697
	Steamboat Springs Transit Fleet Expansion	\$2.4 M	\$2.4 M			\$2.4 M		●	1245
	Redesign and Construct the Steamboat Springs Transportation Center - Phase 1	\$2.3 M	\$2.3 M			\$2.3 M		●	1246
	Steamboat Springs Bus Rapid Transit Planning Study	\$0.25 M	\$0.25 M			\$0.25 M		●	1254
	US 40 East of Hayden - Phase 1	\$10 M	\$10 M			\$9 M	\$1 M	■	2643, 2646
	US 40 West of Tabernash	\$7.15 M	\$7.15 M				\$7.15 M	●	2653
US 50	US 50 Windy Point/Blue Creek Canyon	\$22.4 M	\$18.5 M	✓	\$18.5 M			◆	0033
	US 50 Passing Lanes Blue Mesa	\$10.5 M	\$7.6 M		\$6 M			✓	0034
	US 50 Grand Junction to Delta Repairs	\$17.9 M	\$15.46 M		\$15.46 M			✓	0035
	US 50/US 550 Intersection Improvements	\$3.95 M	\$3.425 M		\$1.573 M	\$1.852 M		■	0040
	Western Slope Maintenance Facility	\$2.7 M	\$2.7 M			\$2.7 M		●	2340
	US 50 Asset Management North of Montrose	\$15 M	\$15 M				\$15 M	●	1462
	Montrose Multimodal Transit Center (All Points Transit)	\$3.235 M	\$3.235 M	✓	\$3.235 M			■	1096
	Outrider Improvements at Montrose, Delta, and Gunnison	\$0.25 M	\$0.25 M		\$0.25 M			●	2454
	US 50 Safety East of Gunnison	\$15 M	\$15 M				\$15 M	●	1469
	US 50 South of Delta	\$5.17 M	\$5.17 M				\$5.17 M	◆	2654
US 550	US 50 South of Olathe	\$4.07 M	\$4.07 M				\$4.07 M	◆	2657
	US 50 Olathe Business Loop	\$24.67 M	\$1.2 M			\$1.2 M		◆	2663
US 550	US 550 Montrose to Ouray County Line Safety Improvements	\$27.47 M	\$13 M	✓	\$12.25 M			◆	0032
CO 9	Frisco Transit Center - Phase 2	\$5.538 M	\$3.438 M	✓	\$3.438 M			✓	1191
	CO 9 South of Green Mountain Reservoir	\$7.65 M	\$7.65 M				\$7.65 M	●	2644
	CO 9 Green Mountain Reservoir - Phase 1	\$7.18 M	\$7.18 M				\$7.18 M	●	2647
	CO 9 Green Mountain Reservoir - Phase 2	\$5.75 M	\$5.75 M				\$5.75 M	●	2650
	CO 9 between Iron Springs and Main Street (Frisco)	\$19.7 M	\$15.1 M	✓	\$15.5 M			✓	0036
CO 13	CO 13 Garfield County Rio Blanco Hill	\$37.6 M	\$31.5 M		\$29 M			◆	0037
	CO 13 Rio Blanco + CO 13 Wyoming South	\$63.99 M	\$61.4 M		\$61.3 M			✓	38, 88, 89

✓ Completed. ◆ In Construction. ● Planning. ■ Design. X On Hold.

H: Highway | T: Transit | RP: Rural Paving



Learn More

YTP.codot.gov | YTP@state.co.us

Project Pipeline

Adopted May 2020 Updated November 2023



Northwest Projects

	Project Type	Total Est. Project Cost	Total Strategic Funding	Other Funding	Funded FY 19-22	Funded FY 23-26	Planned FY 27+	Project Status	Planning Project ID
Highway & Transit– Region 3 (continued)									
CO 14	CO 14 Grizzly Ranch North	RP	\$6.6 M	\$6.6 M		\$1.0 M	\$7 M	✓	0052, 55
CO 64	CO 64 Meeker West	RP	\$5.6 M	\$5.6 M		\$6 M		✓	0046
	CO 64 East of Rangely	RP	\$4.5 M	\$4.5 M			\$4.5 M	●	2659
CO 65	CO 65 between CO 92 and Orchard City	RP	\$8.6 M	\$5.9 M			\$5.9 M	◆	2645
	CO 65 Grand Mesa	RP	\$6.63 M	\$6.63 M			\$6.63 M	●	2651
CO 82	RFTA Aspen Maintenance Facility Improvement - Phase 9	T	\$1.0 M	\$1.0 M	✓	\$1.0 M		✓	1217
	RFTA Glenwood Maintenance Facility - Phases 3 and 7	T	\$46.1 M	\$2.98 M	✓	\$2.98 M		◆	1210
CO 90	CO 90 West of Montrose	RP	\$3.64 M	\$3.64 M			\$3.64 M	●	2661, 2662
CO 92	CO 92 Crawford East	RP	\$6.62 M	\$6.62 M		\$7.4 M		✓	0045
	CO 92 Safety Improvements West of Hotchkiss and Rogers Mesa to Hotchkiss	H	\$47.3 M	\$47 M		\$7.0 M	\$25.1 M	■	0039, 1107
	CO 92 between Hotchkiss and Crawford	RP	\$9.3 M	\$4.8 M		\$3.5 M		✓	0044
	CO 92 between CO 65 and Austin	RP	\$2.41 M	\$2.41 M			\$2.41 M	●	2658
CO 114	CO 114 Parlin West	RP	\$6.4 M	\$5.7 M		\$5.5 M		✓	0056
CO 125	CO 125 North of Walden	RP	\$5.55 M	\$5.55 M			\$5.55 M	●	2656
	CO 125 South of Cowdrey to CO 127	RP	\$6.42 M	\$6.42 M			\$6.42 M	●	2660
CO 135	Gunnison Valley RTA Storage Facility	T	\$2.2 M	\$2.2 M	✓	\$2.2 M		✓	1110
	CO 135 South of Crested Butte	RP	\$6.82 M	\$6.82 M			\$6.82 M	●	2648
CO 139	CO 139 Douglas Pass North	RP	\$10.2 M	\$9.73 M		\$10.4 M		✓	0053, 0054
	CO 139 between the Garfield/Rio Blanco County Line and Douglas Creek	RP	\$6.78 M	\$6.78 M			\$6.78 M	●	2652
	CO 139 between Douglas Creek and Rangely	RP	\$7.1 M	\$7.1 M			\$7.1 M	●	2655
CO 141	CO 141 (32 Road) Safety and Capacity Improvements	H	\$15 M	\$15 M			\$15 M	●	2573
CO 149	CO 149 Lake City North	RP	\$11.9 M	\$11.9 M		\$12.1 M		✓	0051
CO 300	CO 300 Leadville West + US 24 Leadville South	RP	\$9.2 M	\$5.3 M		\$8.3 M		✓	0049, 0050
CO 317	CO 317 East of Hamilton	RP	\$20.7 M	\$8.08 M			\$8.08 M	◆	2776
CO 318	CO 318 Browns Park East from St Line	RP	\$9.01 M	\$9.01 M		\$9.5 M		✓	0048
	CO 318 to Maybell	RP	\$6.74 M	\$6.74 M			\$6.74 M	●	2649
CO 340	CO 340 Safety Improvements	H	\$9 M	\$9 M			\$9 M	●	2572
	CO 348 West of Olathe	RP	\$13.4 M	\$10 M			\$10 M	■	2664, 2665
Non-Corridor Specific	Advancing Transportation Safety (West Vail Pass Auxiliary Lanes)	H	\$3.77 M	\$3.77 M			\$3.77 M	◆	2781
	Shoulder Improvements in Mesa County	H	\$1.5 M	\$1.5 M			\$1.5 M	●	2574
	Shoulder Improvements in the Gunnison Valley Transportation Planning Region	H	\$13.6 M	\$13.6 M			\$13.6 M	●	1484
	Regional Transit Service between Montrose and Telluride	T	\$1.2 M	\$0.5 M		\$0.5 M		●	1028
	Snowmass Transit Center	T	\$34 M	\$4.5 M	✓	\$4.5 M		X	1231
	New Essential Bus Service between Grand Junction and Craig and between Craig and Frisco (Proposed Bustang Outrider Service)	T	\$0.4 M	\$0.4 M			\$0.4 M	●	1032, 2125
	Grand Valley Transit Bus Replacement	T	\$2 M	\$1.2 M			\$1.2 M	●	2666
	Grand Valley Transit System Enhancements	T	\$1.25 M	\$1.25 M			\$1.25 M	●	2667
	Grand Valley Transit Maintenance Facility	T	\$1.5 M	\$1.5 M			\$1.5 M	●	2668
	Grand Valley Transit Compressed Natural Gas Storage and Production Facility	T	\$0.54 M	\$0.54 M	✓		\$0.54 M	●	2669
	Mountain Express Transit Center	T	\$1 M	\$1 M		\$0.5 M	\$0.5 M	●	2766
	Gunnison to Montrose Outrider Expansion (Rolling Stock)	T	\$0.9 M	\$0.9 M		\$0.9 M		●	2767
Gunnison Transit Center	T	\$1 M	\$1 M			\$1 M	●	1102	

✓ Completed. ◆ In Construction. ● Planning. ■ Design. X On Hold.

H: Highway | T: Transit | RP: Rural Paving



[Learn More](#)

YTP.codot.gov

YTP@state.co.us

Project Pipeline

Adopted May 2020 Updated November 2023



Northeast Projects

	Project Type	Total Est. Project Cost	Total Strategic Funding	Other Funding	Funded FY 19-22	Funded FY 23-26	Planned FY 27+	Project Status	Planning Project ID
Highway & Transit– Region 4									
Interstate 25	Berthoud Mobility Hub	\$10.03 M	\$12.5 M	✓	\$12.5 M			◆	2729
	I-25 North Express Lanes: Segment 7&8 (CO 402 to CO 14) + Centerra-Loveland Mobility Hub	\$602 M	\$291 M	✓	\$145 M			◆	2742, 0058
	Firestone - Longmont Mobility Hub (Phase 1 and Phase 2)	\$24.7 M	\$24.5 M	✓	\$22.3 M			◆	2730, 2731, 2750
	Harmony Road Park-n-Ride Expansion	\$0.5 M	\$0.5 M		\$0.5 M			■	2733
	I-25 and CO 14 Interchange Improvements	\$60 M	\$30.5 M	✓		\$3.5 M	\$27 M	■	2604
	I-25 North Express Lanes: Segment 5 (CO 56 to CO 66)	\$427.5 M	\$45.43 M	✓		\$99.45 M		■	2603
	I-25 North Express Lanes: Segment 6 (CO 56 to CO 402)	\$288 M	\$236 M	✓	\$231 M			◆	0059
	I-25 Bustang Fleet Expansion	\$2.5 M	\$2.5 M				\$2.5 M	●	2690
	North I-25 Transit Fleet Purchase	\$3 M	\$3 M			\$1.5 M	\$1.5 M	●	1802
Interstate 70	I-70 Arriba Rest Area	\$2 M	\$2 M				\$2 M	●	1572
	I-70 Corridor Improvements and Preservation (Bethune to Burlington Phase I)	\$52.2 M	\$36.7 M			\$31.2 M		■	2786
	Rural Roads Bridge Package 1 Rehabilitation and Repair	\$4.28 M	\$4.28 M			\$3.8 M	\$0.48 M	■	2670
	I-70 Replacing Failing Pavement	\$58.6 M	\$58.6 M		\$59.1 M			✓	0090
Interstate 76	I-76 Atwood Bridge Rehabilitation and Repair	\$0.27 M	\$0.27 M				\$0.27 M	●	2671
	I-76 CO 144 West, Westbound Diamond Grind and Slabs MP 55.1 to MP 61.9	\$6.07 M	\$6.07 M		\$8.05 M			✓	0069
	I-76 Corridor Improvements and Preservation	\$26.48 M	\$26.48 M	✓		\$26.48 M		■	1022
	I-76 East of Sterling (Part 2) - Slabs and Diamond Grind	\$8.25 M	\$8.25 M		\$8.25 M			◆	2683
	I-76 New Local Fixed-Route Transit Service in Fort Morgan	\$1.55 M	\$1.55 M			\$1.55 M		●	1426
	I-76 Reconstruction from Fort Morgan to Brush	\$93 M	\$45 M	✓		\$20 M	\$25 M	●	1430, 1428
	I-76 Sterling East: MP 124.7 to MP 128.2	\$18.3 M	\$17.9 M		\$8.05 M			◆	0072
	I-76 US 34 East, Slabs and Diamond Grind both directions from MP 66 to MP 73.9	\$11.5 M	\$11.5 M				\$11.5 M	●	0070
	Outrider Improvements at Brush, Fort Morgan, Hudson, and Lochbuie	\$0.32 M	\$0.32 M		\$0.32 M			●	2490
Outrider Improvements at Sterling	\$0.80 M	\$0.80 M		\$0.80 M			●	2491	
US 6	US 6 Merino to Atwood from MP 391 to MP 398	\$4.32 M	\$4.32 M		\$4.32 M			✓	0064
US 34	Estes Park Transit Improvements	\$1.99 M	\$1.3 M	✓	\$1.3 M			●	2530
	US 34 Transit Planning and Capital between Loveland and Greeley	\$16.5 M	\$13.2 M			\$13.2 M		■	2605
US 36	US 36/28th Street and CO 93/Broadway Intersection Improvements	\$15.12 M	\$15.12 M	✓		\$2 M	\$13.12 M	■	2597
	US 36/Community Drive Roundabout	\$4.7 M	\$0.55 M	✓		\$0.55 M		◆	2770
US 40	US 40 Wild Horse Bridge Rehabilitation and Repair	\$0.82 M	\$0.82 M				\$0.82 M	●	2672
	US 40/US 287 Passing Lanes	\$13.13 M	\$0	✓	(This project has been funded by other funding sources)			✓	1017
US 85	US 85 and US 34 Interchange	\$200 M	\$25.1 M	✓		\$6 M	\$19.1 M	■	2695
	US 85 Corridor Improvements, Brighton to Fort Lupton	\$6.1 M	\$6.1 M			\$6.1 M		■	2600
	US 85 Frontage Road Improvements	\$10 M	\$10 M				\$10 M	●	1443
	US 85/WCR 44 (Peckham)	\$85 M	\$18.06 M		\$18.06 M			◆	2785
US 287	US 287 Corridor Improvements: US 36 to CO 66	\$205 M	\$30 M	✓		\$3 M	\$27 M	●	2602
	US 287 Passing Lanes and Safety Improvements	\$16 M	\$16 M			\$8 M	\$8 M	■	1456
US 385	US 385 between Sand Creek and County Road 29	\$14.69 M	\$14.69 M			\$14.69 M		■	2685
	US 385 Burlington Bridge Rehabilitation and Repair	\$0.17 M	\$0.17 M				\$0.17 M	●	2678
	US 385 Corridor Study Improvements	\$200 M	\$35.28 M	✓			\$35.28 M	●	2416
	US 385 Idalia North Bridge Rehabilitation and Repair	\$0.10 M	\$0.10 M				\$0.10 M	●	2679
	US 385 near Smoky Hill River to near County Road GG from MP 157 to MP 170	\$18.9 M	\$17 M		\$14.8 M			◆	0062
	US 385 Phillips/Yuma County Line South from MP 263.06 to MP 269.35	\$7.4 M	\$7.4 M			\$7.1 M		✓	0063
	US 385 South of Cheyenne Wells	\$12.32 M	\$12.32 M			\$7.1 M	\$5.22 M	◆	2686
US 385 South of Julesburg	\$5.55 M	\$5.55 M				\$5.55 M	●	2687	
CO 1	CO 1 Safety Improvements	\$4 M	\$4 M	✓		\$4 M		■	2771
CO 7	CO 7 Corridor Improvements	\$106 M	\$15.3 M	✓	\$13.44 M	\$1.86 M		■	2596
CO 42	CO 42 Safety and Intersection Improvements	\$40 M	\$14 M	✓		\$6.77 M	\$7.23 M	■	2598
CO 52	CO 52 Prospect Valley from MP 42 - 54.6 & MP 40.75 - 40.77	\$10.6 M	\$0.527 M		\$0.573 M			✓	2754
	CO 52 Prospect Valley from MP 54.58 to MP 60.753	\$8.3 M	\$5.1 M		\$5.1 M			■	0067
	CO 52/CR 59 Roundabout and Safety Improvements	\$32.6 M	\$7.6 M	✓		\$7.6 M		■	2772

✓ Completed. ◆ In Construction. ● Planning. ■ Design. X On Hold.

H: Highway | T: Transit | RP: Rural Paving



[Learn More](#)

YTP.codot.gov | YTP@state.co.us

Project Pipeline

Adopted May 2020 Updated November 2023



Northeast Projects

	Project Type	Total Est. Project Cost	Total Strategic Funding	Other Funding	Funded FY 19-22	Funded FY 23-26	Planned FY 27+	Project Status	Planning Project ID	
Highway & Transit– Region 4										
CO 59	CO 59 Bridges Rehabilitation and Repair	H	\$1.29 M	\$1.29 M			\$1.29 M	●	2675	
	CO 59 Safety Improvements	RP	\$50 M	\$22.76 M			\$22.76 M	●	2498	
	CO 59 Sandy Creek Bridge Rehabilitation and Repair	H	\$0.77 M	\$0.77 M	\$5.42 M			✓	2674	
	CO 59 Siebert to Cope Bridge Rehabilitation and Repair	H	\$1.18 M	\$1.18 M	\$1.18 M			■	2677	
	CO 59 Six Mile Creek Bridge Rehabilitation and Repair	H	\$0.38 M	\$0.38 M		\$0.38 M		●	2676	
	CO 59 South of Cope to I-70 from MP 41.071 to MP 67.14	RP	\$17.4 M	\$17.4 M	\$17.8 M			✓	0060	
CO 61	CO 61 Sterling East MP 32.3-41.0	RP	\$6 M	\$6 M		\$6 M		■	2774	
CO 66	CO 66 Corridor Improvements	H	\$100 M	\$10 M	✓	\$5 M	\$5 M	●	2599	
CO 71	CO 71 Big Beaver Creek Bridge Rehabilitation and Repair	H	\$4.78 M	\$4.78 M			\$4.78 M	●	2681	
	CO 71 Corridor Improvements	RP	\$200 M	\$20.58 M	✓	\$6.25 M	\$14.33 M	◆	1023	
	CO 71 Limon Structures Bridge Rehabilitation and Repair	H	\$0.62 M	\$0.62 M			\$0.62 M	●	2680	
	CO 71 North of Brush	RP	\$3.48 M	\$3.48 M			\$3.48 M	●	2689	
	CO 71 South of CO 14	RP	\$24.13 M	\$24.13 M		\$6.99 M	\$17.14 M	●	2688	
	CO 71 Stoneham Bridge Rehabilitation and Repair	H	\$0.14 M	\$0.14 M			\$0.14 M	●	2682	
CO 86	CO 86 Corridor Improvements	H	\$3.2 M	\$2 M	✓	\$0.5 M	\$1.5 M	■	2413	
	CO 119 Bus Rapid Transit, Safety and Mobility Improvements	H,T	\$161.7 M	\$64.9 M		\$40 M	\$24.9 M	■	0057, 2601	
CO 138	CO 138 Sterling North from MP 3 to MP 13.5	RP	\$17.4 M	\$2 M		\$2 M		◆	0061	
Non-Corridor Specific	Advancing Transportation Safety (I-76 & CO 144 Interchange Safety Improvements)	H	\$10.5 M	\$5.97 M			\$5.97 M	●	2782	
	287/40/94 Bridge Rehabilitation and Repair	H	\$1.68 M	\$1.68 M			\$1.68 M	●	2673	
	Bustang Fleet Purchases	T	\$2.5 M	\$2.5 M		\$2.5 M		✓	2736	
	Bustang Outrider Fleet Expansion	T	\$2.58 M	\$2.58 M			\$1.5 M	\$1.08 M	●	2773
	Northern Colorado Fleet Maintenance Facility	T	\$17 M	\$3 M		\$3 M		●	2737	
	Safer Main Streets Program - Phase 1	H,T	\$9.2 M	\$9.2 M		\$9.2 M		✓	Weblink	

✓ Completed. ◆ In Construction. ● Planning. ■ Design. X On Hold.

H: Highway | T: Transit | RP: Rural Paving



[Learn More](#) | YTP.codot.gov | YTP@state.co.us

Project Pipeline

Adopted May 2020 Updated November 2023



Southwest Projects

	Project Type	Total Est. Project Cost	Total Strategic Funding	Other Funding	Funded FY 19-22	Funded FY 23-26	Planned FY 27+	Project Status	Planning Project ID
Highway & Transit – Region 5									
US 24	US 24 Intersection Improvements in Buena Vista	\$6 M	\$4 M	✓			\$4 M	●	2039
	Buena Vista Park-n-Ride and Intermodal Facility	\$1.04 M	\$1.04 M		\$1.04 M			◆	1297
US 50	US 50 and US 285 Intersection Reconstruction	\$11 M	\$8.9 M	✓	\$3.9 M	\$4.97 M		■	0073, 0077
	US 50 Corridor Improvements in Poncha Springs	\$2 M	\$2 M				\$2 M	●	2456
	Outrider Improvements at Poncha Springs	\$80 K	\$80 K		\$80 K			●	2752
	Salida Transit Capital Improvements	\$0.6 M	\$0.48 M	✓	\$0.48 M			●	2751
US 62	Outrider Improvements at Placerville, Ridgway, and Telluride	\$0.25 M	\$0.25 M		\$0.25 M			●	2455
US 160	US 160 Towaoc Passing Lanes	\$11.4 M	\$9.2 M		\$9.2 M			✓	0091
	US 160 McCabe Creek Major Structure Replacement	\$11.2 M	\$7.2 M	✓	\$7.2 M			✓	0075
	US 160 Multimodal Improvements in Alamosa	\$8.8 M	\$8.8 M				\$8.8 M	●	2038
	Alamosa Transit Center	\$2.8 M	\$2.8 M				\$2.8 M	●	1309
	US 160 Intelligent Transportation Systems (ITS) Infrastructure	\$30.56 M	\$10 M	✓			\$10 M	●	1303
	US 160 Elmore's Corner East	\$91 M	\$34.53 M	✓		\$27.6 M	\$6.93 M	■	1334
	US 160 East of Fort Garland Safety and Wildlife Mitigation	\$15.8 M	\$9.4 M		\$3.41 M	\$5.96 M		■	1315
	US 160 between New Mexico and Aztec Creek	\$29.8 M	\$19.39 M	✓	\$19.39 M			✓	0078
	Pagosa Springs' Main Street Reconstruction and Multimodal Improvements	\$18.8 M	\$15.7 M		\$15.7 M			■	1339
	Pagosa Springs/Archuleta County Multimodal Facility	\$5.5 M	\$2.68 M	✓	\$1.08 M	\$1.6 M		◆	1326
	Bustang Outrider Service between Pagosa Springs and Durango	\$2.69 M	\$2.69 M			\$2.69 M		●	2523
	Wildlife Mitigation on US 160 between Cortez and Durango (near CR 30.1)	\$4.5 M	\$2.88 M				\$2.88 M	●	2089
	Intersection Improvements at US 160 and Pike Avenue	\$3 M	\$3 M	✓			\$3 M	●	2061
Intersection Improvements at US 160 and CR 30.1 (Phil's World)	\$1.5 M	\$1.5 M				\$1.5 M	●	2087	
US 285	Outrider Improvements at Johnson Village, Moffat, and Alamosa at Adams State	\$0.25 M	\$0.25 M		\$0.25 M			●	2492
	US 285 Safety and Mobility Improvements between Center and Saguache	\$70 M	\$33.68 M			\$20.6 M	\$13.08 M	■	1051
	US 285 Improvements in Saguache	\$0.75 M	\$0.75 M	✓			\$0.75 M	●	2069
US 550	US 550 and US 160 Connection	\$149.3 M	\$68.9 M	✓	\$68.9 M			■	0074
	US 550 Pacochupuk South Roadway Mobility, Safety, and Billy Creek Wildlife Improvements	\$15.7 M	\$13.4 M	✓	\$8.29 M	\$5.1 M		■	0085
	US 550 Billy Creek Safety and Widening	\$37.53 M	\$22.95 M	✓		\$10.53 M	\$12.42 M	■	1133
	Durango Transit Capital Improvement	\$4.5 M	\$4.5 M	✓	\$2.0 M	\$2.5 M		●	1365
CO 15	CO 15 West of La Jara	\$6 M	\$6 M				\$6 M	●	2636
CO 17	Northeast San Luis Valley Transit Service	\$0.56 M	\$0.56 M			\$0.56 M		●	2532
	CO 17 West of Antonito	\$34.6 M	\$7.17 M			\$7.17 M		■	2634
	CO 17 Surface Treatment & Widening Hooper to US 285 Junction	\$26.6 M	\$14.7 M		\$14.7 M			✓	0080
CO 114	CO 114 US 50 East	\$12.7 M	\$12.7 M		\$12 M	\$0.7 M		◆	0084
CO 136	CO 136 East of La Jara	\$2 M	\$2 M				\$2 M	●	2630
CO 141	CO 141 Slickrock and CO 145 Redvale	\$15.4 M	\$10 M		\$10 M			✓	0082
	CO 141 North of Naturita	\$12.1 M	\$4.1 M		\$4.1 M			✓	0083
CO 145	Multimodal Improvements on CO 145	\$5 M	\$3.38 M	✓		\$0.68 M	\$2.7 M	■	1482
	Outrider Improvements at Durango, Mancos, Cortez, Dolores, and Rico	\$0.4 M	\$0.4 M		\$0.4 M			●	2493
	SMART Purchase of Existing Real Property for Admin & Maintenance Facility	\$2.5 M	\$1.86 M	✓	\$1.86 M			✓	1123
	CO 145 Dolores East	\$10.38 M	\$10.38 M				\$10.38 M	●	2778
CO 149	CO 149 North of Creede	\$14.6 M	\$14.4 M		\$14.4 M			✓	0081
CO 151	CO 151 between Ignacio and US 160	\$25.76 M	\$10.57 M	✓		\$10.57 M		■	2635
CO 172	CO 172 between New Mexico to Ignacio	\$10.38 M	\$10.38 M				\$10.38 M	●	2632
CO 370	CO 370 between CO 15 and CO 285	\$14 M	\$1.5 M	✓	\$1.5 M			✓	0079

✓ Completed. ◆ In Construction. ● Planning. ■ Design. X On Hold.

H: Highway | T: Transit | RP: Rural Paving



[Learn More](#) | YTP.codot.gov | YTP@state.co.us

Project Pipeline

Adopted May 2020 Updated November 2023



Southwest Projects

		Project Type	Total Est. Project Cost	Total Strategic Funding	Other Funding	Funded FY 19-22	Funded FY 23-26	Planned FY 27+	Project Status	Planning Project ID
Highway & Transit – Region 5										
CO 371	CO 371 between CO 15 and CO 368	RP	\$2.38 M	\$2.38 M				\$2.38 M	●	2637
	Intersection and Pedestrian Improvements at CO 291 and US 50	H	\$8 M	\$7 M			\$7 M		■	2070
	Regional Transit Service between Montrose and Telluride	T	\$2.12 M	\$2.12 M		\$2.12 M			●	1028

Your Transportation Priorities is an evolving list of proposed projects to address the needs and concerns of Coloradans across the state. This list will be updated on an ongoing basis.

Please visit YTP.codot.gov for the most up-to-date information.



✓ Completed. ◆ In Construction. ● Planning. ■ Design. X On Hold.

H: Highway | T: Transit | RP: Rural Paving



[Learn More](#) | YTP.codot.gov | YTP@state.co.us