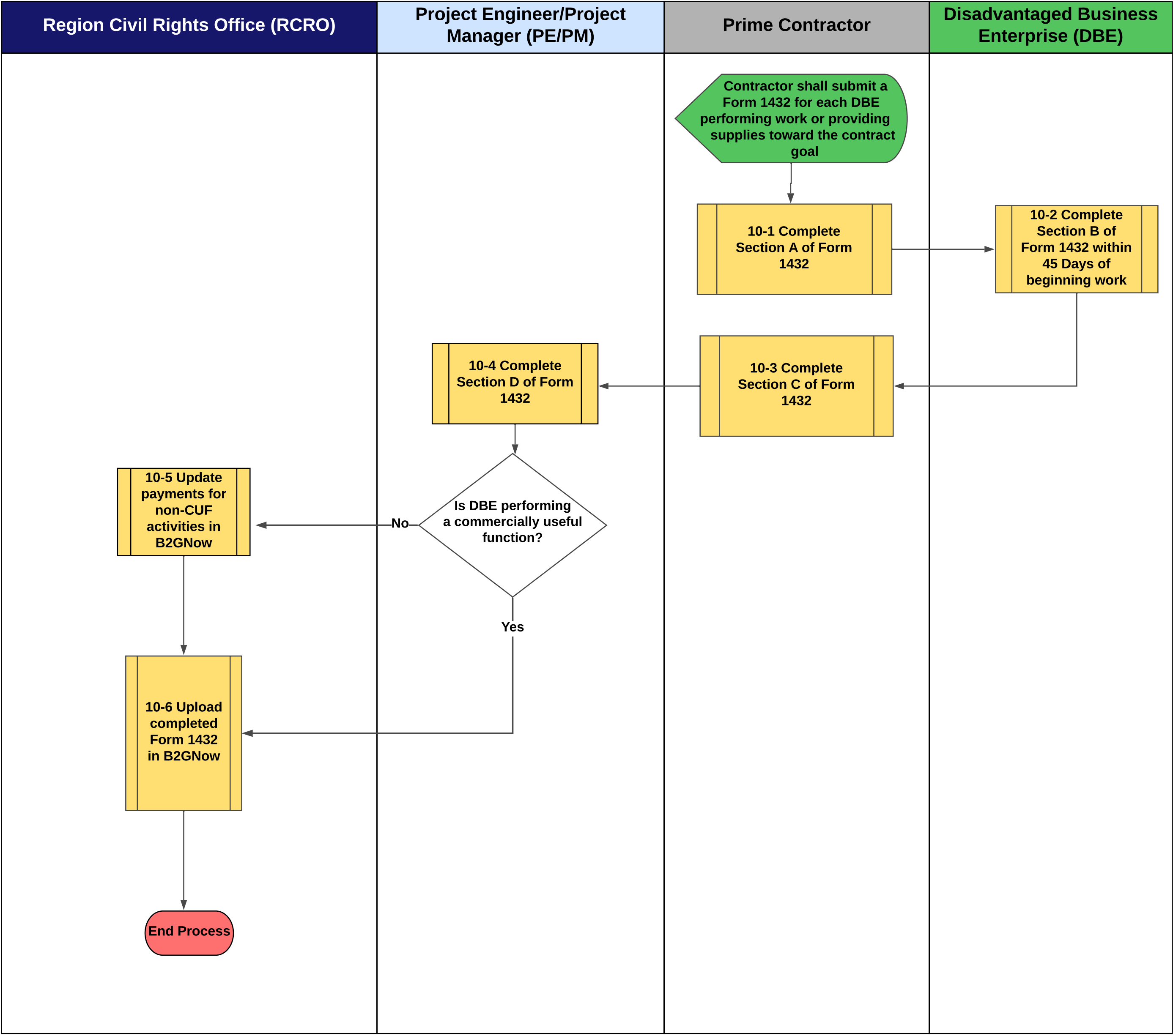


B - 10-0 Validate DBE Counting (CDOT Form 1432)_May 2025



Flowchart B-10-0: Validate DBE Counting (CDOT Form 1432)

1. Start: The prime contractor submits a Commercially Useful Function Questionnaire, CDOT Form 1432, for each Disadvantaged Business Enterprise (DBE) performing work or providing supplies toward the contract goal.
2. The prime contractor completes Section A of the CDOT Form 1432 (Figure 10-1).
3. The DBE firm completes Section B of Form 1432 within 45 days of the DBE beginning work (Figure 10-2) and submits the form to the prime contractor.
4. The prime contractor completes Section C of Form 1432 and submits it to the CDOT Project Engineer/Project Manager (PE/PM) (Figure 10-3).
5. The PE/PM completes Section D of Form 1432 (Figure 10-4).
6. Decision Item: Is the DBE performing a commercially useful function?
 - If yes, continue to step 7.
 - If no, continue to step 8.
7. The Region Civil Rights Office uploads the completed Form 1432 in B2GNow (Figure 10-6). The process ends.
8. The Region Civil Rights Office updates the payment for non-commercially useful function activities in B2GNow (Figure 10-5). The process ends.