

# **SCOPE OF WORK**

**Project Specific**  
Specific Rate of Pay

**Design Review**  
**Construction Management**  
**Construction Inspection**  
**Materials Testing Services**

**COLORADO DEPARTMENT OF TRANSPORTATION**

**FBR R200-266**

**S/A 23558**

**Region 2 Bridge Bundle (Grant)**

**FBR R200-267**

**S/A 23559**

**Region 2 Bridge Bundle (Non-Grant)**

## **SCOPE OF WORK FOR:**

- I. General Information and Contract**
- II. CDOT Staffing**
- III. Consultant Staffing**
- IV. Design**
- V. Supplemental Work**
- VI. Staffing Chart**

**Note: This draft scope of work has been reviewed by the Department and reflects a plan of approach based on the known goals. Factors determining the selection of a consultant is the ability of that consultant to analyze the project goals, evaluate the work elements, and formulate a work plan and staffing. This process may produce new approaches or modification to the project work elements described here in. Because of that, all consultants should be aware that the Final Scope of Work for a project will be produced with input from the selected Consultant.**

## **I. PROJECT SPECIFIC GENERAL INFORMATION**

### **Contract Administration**

Region Transportation Director	Richard Zamora P.E. 5615 Wills Blvd. Pueblo, CO 81008
South Program Engineer	Shane Ferguson P.E. 1480 Quail Lake Loop, Suite A Colorado Springs, CO 80906 719-227-3201
Resident Engineer	Jennifer Sparks P.E. 5615 Wills Blvd. Pueblo, CO 81008 719-546-5753

Active day-to-day administration and monitoring of this contract will be delegated to:

Project Director	Scott Dalton 5615 Wills Blvd. Pueblo, CO 81008 Cell 719-251-7820
------------------	---

### **Description**

The Colorado Department of Transportation is seeking professional support services for the Region 2 Bridge Bundle Design-Build project. The project includes the replacement of seventeen (17) rural structures across key highway corridors in Region 2.

Respondents should view this “Scope of Services” for the project deliverables. Specific task orders will be negotiated with the successful project team. The resulting contract may also be supplemented to include any related topics to the major elements of the project.

### **Background Information**

The project includes the replacement of seventeen (17) to nineteen (19) rural structures in Region 2, funded by a grant awarded by the United States Department of Transportation (USDOT) Federal Highways Administration (FHWA) Competitive Highway Bridge Program (CHBP), and Colorado Bridge Enterprise (CBE).

The nineteen (19) rural structures that comprise the project are on essential highway corridors in southeastern and central Colorado. The key corridors (US 350, US 24, CO 239 and CO 9) provide rural mobility, intra- and interstate commerce, movement of agricultural products and supplies, and access to tourist destinations. Key elements and commitments of the project include: design and build new structures to current standards, construction phasing that ensures that full road closures will not be necessary to construct the project, and temporary erosion control.

The Work will be comprised of a Basic Configuration that replaces structures at the following locations:

1. Structure G-12-C on CO 9 at mile marker 71.445
2. Structure J-14-C on CO 9 at mile marker 20.107
3. Structure J-15-G on CO 9 at mile marker 15.97
4. Structure I-13-G on US 24 at mile marker 227.095
5. Structure I-13-H on US 24 at mile marker 229.468
6. Structure H-13-N on US 24 at mile marker 240.686
7. Structure I-15-AO on US 24 at mile marker 271.90
8. Structure I-15-T on US 24 at mile marker 271.691
9. Structure O-19-D on US 350 at mile marker 10.289
10. Structure N-21-C on US 350 at mile marker 47.131
11. Structure N-21-F on US 350 at mile marker 48.744
12. Structure M-21-C on US 350 at mile marker 50.582
13. Structure M-21-B on US 350 at mile marker 51.682
14. Structure M-21-I on US 350 at mile marker 56.454
15. Structure M-21-J on US 350 at mile marker 57.069
16. Structure M-22-Y on US 350 at mile marker 57.474
17. Structure M-22-U on US 350 at mile marker 69.817

Additional Requested Elements (AREs) that extend the scope of work for the Project beyond the Basic Configuration that may be included in the Project are:

1. Structure I-17-X on US 24 at mile marker 295.45
2. Structure P-19-G Minor on CO 239 at mile marker 1.74

### **Project Goals**

This project desires to accomplish the following through design review, construction management, construction inspection, and materials testing:

- A. A collaborative partnership between CDOT, Consultants, Stakeholders and the Contractor's team
- B. Quality construction
- C. Improvements meeting current design standards and Contract Documents

### **Planned Improvements**

This project is located on US 24, US 350, CO 9, and CO 239, in Otero, Las Animas, El Paso, Fremont, Park, and Teller Counties. Construction will include bridges, box culverts, roadway, utilities, retaining walls, etc.

### **Authorization to Proceed**

Work shall not commence until the written Notice to Proceed for a "Task Order" is received by the Consultant. The work shall be completed in the time specified.

### **Project Costs**

The design and construction of this project is estimated at \$43.4 million.

The amount for this professional support services contract is \$4.223 million with a DBE goal of 5%. Task Orders will be written as needed.

### **Work Duration**

The time period for the work described in this scope is approximately three (3) years, Winter 2021 through Winter 2024 including the timeframe to complete the paperwork. Work may be required night and/or day, on weekends, holidays, and/or on a split shift basis. Workweeks may be in excess of or less than the standard 40-hour week.

### **Routine Billing & Reporting**

The Consultant shall provide the following on a routine basis:

- a) Coordination of all contract activities by the Consultant's Contract and/or Task Order Manager.
- b) Monthly billing formats, suitable to the CDOT Project Director, for all contract activities performed by the consultant's Project Staff.
- c) Periodic reports and billings required by CDOT Procedural Directive 400.2.

### **Other Direct Costs:**

CDOT will clarify with each task order the other direct costs that will be paid for by the state for each position assigned to the project.

### **Status of Contract**

The Consultant shall monitor the status of the contract and advise the CDOT Resident Engineer of any potential need to supplement the contract. Failure to monitor contract status and provide timely notification may result in discontinuation of the Consultant's services.

### **Vehicles and Equipment**

The Consultant shall furnish all personnel, equipment and transportation required to perform the work. Consultant personnel shall have appropriate vehicles (to meet PD 1502.1), Personal Protective Equipment, cell phones, computers, and miscellaneous equipment (calculators, office and lab supplies, safety equipment, etc.) required for performing the work. All manuals required to perform the work or reference as needed shall be provided by the consultant to the consultant personnel on the project.

Other equipment may be required as requested by CDOT.

### **Definitions:**

**Consultant** - The firm or corporation providing personnel under this agreement to perform construction services as outlined herein.

**Consultant Contract Manager** - the Consultant employee in responsible charge of Consultant services performed as described in this Contract. The Consultant Project Engineer administers the Consultant contract must be a licensed Professional Engineer in the State of Colorado. The Consultant's work shall be under the direction of, and shall be reviewed by a Professional Engineer registered in the State of

Colorado.

**Consultant Engineer(s) in Responsible Charge (EIRC)** – The Consultant employee(s) acting under the authority of the Chief Engineer, who is responsible for engineering during construction activities, as indicated in the bylaws and rules of the State Board of Licensure and CDOT’s policies and procedures. The EIRC(s) shall be a Professional Engineer registered in the State of Colorado.

**Design Lead** – The Consultant employee coordinating the design review with Consultant discipline leads and design reviewers. Reporting to and working with CDOT. This individual may also be a discipline lead. The Design Lead shall be a Professional Engineer registered in the State of Colorado.

**Design Reviewer** – Consultant employee(s) who performs review of Contractor plans for conformance with the Contract and specifications, and conducts construction field reviews as work progresses. These individual(s) are the discipline leads.

**Construction Manager or Construction Inspector or Materials Tester** - Consultant Employee(s) who performs construction management, construction inspection, materials testing, and other project-related services under the supervision of the Consultant Contract Manager, and the Consultant Engineer in Responsible Charge at the direction of CDOT.

**Contractor** - The individual, firm, corporation, or team contracting with CDOT to design and construct the Project.

**CDOT Computer/Software Information**

The consultant shall utilize the most recent CDOT adopted software. Some software may not be applicable to this project. The primary software used by CDOT is as follows:

- A. Earthwork OpenRoads Designer (ORD)
- B. Drafting/CADD ORD with CDOT’s current workspace formatting configurations and standards.
- C. Survey CDOT ORD TMOSS
- D. Bridge Staff Bridge software shall be used in either design or design check
- E. Estimating Trns\*port (an AASHTO sponsored software, now web based)
- F. Specifications Microsoft Word
- G. Schedule MS Project and/or Primavera – as used by Contractor
- H. Construction AASHTO Software (SiteManager, LIMS)
- I. Materials Current CDOT QA/QC program
- J. Other MS Excel, Bluebeam, and Bentley Project Wise

**Additional Project Information**

Additional information is available on the websites <https://www.codot.gov/projects/region2bridges> and <https://www.codot.gov/business/designsupport/adp-db-cmhc/opportunities/design-build-solicitations-active/23558-23559-bridge-bundle-design-build-region-2>

**Project Coordination**

Coordination will be required, but not limited to, the following:

- A. Otero, Las Animas, El Paso, Fremont, Park, and Teller Counties
- B. CDOT Region 2
- C. Affected Regional Municipalities in Colorado
- D. South Central Transportation Planning Region (TPR), Southeast TPR and Central
- E. Front Range TPR. Urban Drainage & Flood Control District (UD & FCD)
- F. Federal Emergency Management Agency (FEMA)
- G. Colorado Parks and Wildlife
- H. Federal Highway Administration (FHWA)
- I. Utilities
- J. Others that may be included, but not limited to: Residents, Business

## II. CDOT STAFFING

CDOT staffing expectations, as shown below, are what is currently planned for initial project staffing and may change prior to start or during construction. It is for the consultant’s understanding of the overall project staffing and structure. See organizational chart on the last page of this document.

### **CDOT position Definitions:**

#### **Jennifer Sparks - Resident Engineer.**

CDOT Resident Engineer: - The CDOT employee responsible to the Region Program Engineer for the quality and successful completion of a transportation project. The Resident Engineer authorizes interim and final payments and all changes to Contracts for all Consultants and Contractors. The CDOT Resident Engineer shall be the final authority regarding acceptance of work performed by the Consultant.

#### **Scott Dalton – Project Director**

CDOT Project Director – The Project Director is the single point of authority responsible for the administration and implementation of the project. The Project Director leads both the Project Management Team (PMT) and the Project Leadership Team (PLT). The Project Director is CDOT’s sole contact person and addressee for receiving all communication regarding the project. The Project Director is the only person on the project team that has approval authority, and all approvals by the Project Director should be documented in writing. The Project Director provides guidance from a programmatic level and is a liaison to the Executive Oversight Committee (EOC). The Project Director has the authority to remove any team member for failure to comply with the confidentiality requirements of the project.

#### **Patrick Vigil - Project Manager of US 350 and CO 239 Structures**

CDOT Project Manager - The Project Manager directly supports the Project Director in leading the project and assumes specific leadership responsibilities at the direction of the Project Director. The Project Manager leads the design and construction oversight activities.

#### **Cynthia Bailey - Project Manager of US 24 and CO 9 Structures**

CDOT Project Manager - The Project Manager directly supports the Project Director in leading the project and assumes specific leadership responsibilities at the direction of the Project Director. The Project Manager leads the design and construction oversight activities.

## III. Consultant Staffing Responsibilities and Duties

### **Project Standards**

Construction Management, Design Review and Construction Inspection/Testing shall be in accordance with the Colorado Department of Transportation's Construction Manual, Field Materials Manual, applicable AASHTO test procedures, Colorado Department of Transportation Inspector's Check-list, Standard Specifications for Road & Bridge Construction, Supplemental Specifications, applicable M&S Standards, and the plans and specifications currently in use when a construction project is advertised. All activities performed shall be as directed and authorized by the CDOT Project Manager, and as approved by the CDOT Resident Engineer.

All consultant staff shall be familiar with road and bridge construction and have experience with CDOT design and construction procedures. All staff should be familiar with CDOT construction process and documentation unless otherwise noted.

**All construction personnel shall**

The Consultant staff shall assist the CDOT Project Team in performance of the following Construction activities:

- Periodic reports and billings required by CDOT Procedural Directive 400.2.
- Participation in weekly progress meetings with contractor, subcontractors, utilities and other interested parties.
- Securing project documentation from the contractor.
- Anticipating project problems and directing solutions to CDOT Project Managers and CDOT Project Director.
- Timely review of the design drawings and data submitted by the Contractor's design build team and suppliers for conformance with the intent of the contract and specifications. Providing written statements of conformance.
- Inform and obtain concurrence(s) as needed from the CDOT Project Managers and keep relative documentation for project records.
- Maintaining accurate notes reflecting actual construction details to be used in preparation of as-constructed plans.
- Communicating with adjacent landowners, as required, to resolve issues that arise due to construction.
- Monitoring compliance with and taking appropriate action to preserve safety on the project for all workers and traveling public in accordance with Method of Handling Traffic (MHT).
- Initial, follow up, and final inspections of work in progress including interim and final measurements and daily diaries.
- Notifying contractors and CDOT Project Manager of non-compliance with the contract plans and specifications
- Ensure compliance with permits (such as 404 and NPDES)
- Preparation of inspection documentation for development of progress payments for the contractor in accordance with prescribed procedures
- Submittal of standard documentation reports no later than the following working day
- Aiding in the preparation of correspondence to the contractor, CDOT Staff, local agencies, etc.
- Providing liaison and communication to contractor field crews
- Review of final "As Constructed" plans upon project completion
- Miscellaneous related duties as requested by the CDOT Project Managers or CDOT Project Director
- Assist in preparing punch lists of uncompleted work, non-conformance reports, and deficiency notices.
- Assist in tracking and preparing responses to contractors' and suppliers' requests for information, submittals, change notices, claims, and correspondence.

## Scope of Work

The scope of work is to assist in the administration of the project on behalf of CDOT. This shall require providing stakeholder coordination, design review, and construction administration support required for the Region 2 Bridge Bundle Design/Build project.

The Consultant is expected to demonstrate how they will fulfill the duties of Engineer in Responsible Charge for the Project. Depending on the work, the Engineer in Responsible Charge duties may be delegated to multiple individuals.

Discipline leads performing design review are also expected to perform construction observations/inspections as necessary during the project.

It is expected that the Consultant personnel noted with \*, at a minimum, be available for interviews.

## Discipline Lead Personnel

It is not expected that all Consultant personnel performing design review be co-located on site.

**\*Structure Lead**, a licensed Professional Engineer in the State of Colorado, representing CDOT Staff Bridge for structure design review and is available during construction and construction inspections.

The Structure Lead will primarily perform major and other structure plan review, inspection work, and documentation. The Structure Lead shall have skills or experience in: design review, reading and interpreting plans and specifications.

Location: This position will not be co-located in the field office, but shall be on site, as needed, for certain design and construction activities.

Duration: This position is not expected to be full time, but available as needed, during design and construction activities.

**\*Roadway Lead**, a licensed Professional Engineer in the State of Colorado, that performs design review of Roadway and Utilities,. Knowledge of survey processes and how to operate survey equipment is a benefit. The Roadway Lead shall have skills or experience in: design review, reading and interpreting plans and specifications, roadway design, utility design/relocation, and landscaping.

Location: This position will not be co-located in the field office, but shall be on site, as needed, for certain design and construction activities.

Duration: This position is not expected to be full time, but available as needed, during design and construction activities.

**Geotechnical and Materials Lead**, a licensed Professional Engineer in the State of Colorado, that performs design review, and is available during construction and construction inspections, and communicates with the Region 2 Materials Engineer. The Geotechnical and Materials Lead shall have skills and experience in: design review, reading and interpreting plans and specifications, geotechnical engineering, materials testing, and troubleshooting.

Location: This position will not need to be co-located in the field office during design, but shall be on site, as needed, for certain construction activities.

Duration: This position is not expected to be full time, but available as needed, during design and



construction activities.

**Drainage Lead**, a licensed Professional Engineer in the State of Colorado, that will represent the CDOT Region 2 Hydraulics Engineer, performing design review. The Drainage Lead shall have skills and experience in: design review, reading and interpreting plans and specifications, hydraulic engineering, storm water management plan compliance, FEMA mapping, floodplain mapping, and meeting floodplain requirements.

Location: This position will not be co-located in the field office, but shall be on site, as needed, for certain design and construction activities.

Duration: This position is not expected to be full time, but available as needed, during design and construction activities.

**Environmental Lead** capable of design review and construction inspection. Coordination with Region 2 Environmental personnel required. The Environmental Lead shall have skills and experience in: design review, reading and interpreting plans and specifications, hazardous materials, material management plans, environmental permitting and NEPA.

Location: This position will not be co-located in the field office during design, but shall be on site, as needed, for certain design and construction activities.

**CDOT Project Public Information Manager (PPIM)** shall have a minimum of five years of professional experience in public/media relations, marketing, or other related field and good verbal and written communication skills. CDOT project experience is a benefit.

The CDOT PPIM shall have skills and experience in: written communications, oral communications, web content, graphic design, individual customer service, presentation development, canvassing, and public outreach.

The CDOT PPIM shall coordinate and host with the CDOT RCM and Contractor Public Information Manager (PIM) at least 4 public meetings at Project milestones, as follows:

1. Virtual open-house presentation for each highway corridor (CO 9, US 24 and US 350).
2. One in-person special event at Project completion.

In coordination with the Contractor's Public Information Manager, the CDOT PPIM shall provide updates and information for each highway corridor to the project website:

<https://www.codot.gov/projects/region2bridges>. The CDOT PPIM, in coordination with the Contractor's PIM and CDOT Regional Communications Manager (RCM), shall develop materials that will be used to publicize the meeting(s) through media advisories and press releases; website; emails; advertisements or inserts in local newspapers or newsletters; flyers; mailers; and social media. The CDOT PPIM, in coordination with the Contractor's PIM and CDOT RCM, shall respond to all requests and attend community and stakeholder group meetings. This may include city council meetings, county planning or commissioner meetings for Otero, Las Animas, El Paso, Fremont, Park, and Teller Counties, business, association or neighborhood meetings, at which the Project may be discussed or a presentation is requested.

Location: This position will not need to be co-located in the central field office.

Duration: This position is not expected to be full time, but available as needed, during design and

construction activities.

**Traffic Lead**, a licensed Professional Engineer in the State of Colorado, that performs design review of traffic (signing, lighting, pavement marking), maintenance of traffic plans, and coordinates/communicates with CDOT Region 2 Traffic personnel. The Traffic Lead shall have skills and experience in: design review, reading and interpreting plans and specifications, traffic design and requirements (signing, lighting, pavement marking, etc.), maintenance of traffic plans, methods of handling traffic, CDOT Form 568's, and use of traffic control devices.

Location: This position will not be co-located in the field office, but shall be on site, as needed, for certain design and construction activities.

Duration: This position is not expected to be full time, but available as needed, during design and construction activities.

### **Other Project Personnel**

\***Office Manager/Document Control Manager** shall be responsible for all Project document control, coordination for document reviews, meeting minutes and action item responsibility and other duties as assigned. The Office Manager/Document Control Manager shall have skills and experience in: reading and interpreting plans, specifications, and contract requirements, detail oriented and proactive organization, communication, and planning, and the ability to work well in a team environment.

Document Control for the project includes, but is not limited to, the receipt, classification, recording, indexing, storing, and retrieval of all correspondence, design review and certification, assessments and non-conformance reports, requests for information, released for construction plans, as constructed plans, and any other project documentation.

The software system necessary to provide effective document control will be provided by CDOT and/or the Consultant team.

Location: This position will be co-located in the central field office.

Duration: It is expected that this position be full time for the duration of the project.

**Construction Project Managers**, two (2) full time construction project managers will be required at the east and west corridors to perform roadway, structure, utility, environmental, traffic, landscaping, drainage construction management. The construction project managers shall have experience as construction project managers on projects similar to this project in size and type. Design build experience is a benefit.

Location: These positions will be co-located in the field offices.

Duration: It is expected that the two positions be full time for the duration of the project.

**Engineer(s) in Responsible Charge**, is a licensed Professional Engineer in the State of Colorado that will act as the engineer in responsible charge for the owner, CDOT, during the duration of the project. The EIRC shall ensure the construction of the project meets design and construction criteria and will be required to be onsite to oversee safety critical components of the work. The EIRC shall have experience

with structure construction similar to the magnitude of this project. Design build experience is a benefit.

Location: This/these position(s) will be co-located in the field offices.

Duration: It is expected that the position(s) be full time for the duration of the project.

**Administrative Support** familiar with heavy-highway construction, construction administration and document control assisting the Office Manager. The Administrative Support shall have the following experience or skills: recording meeting minutes, reading and interpreting plans and specifications, be detail oriented, be proactive, and the ability to work well in a team environment.

Location: This position will be co-located in the field offices.

Duration: It is expected that this position be part time (20-30 hours/week) for the duration of the project. With the exception of 40 hour/week when necessary.

**Lead Tester/Inspector**, capable of both, design review and construction inspection, assisting and reporting to the EIRC and helping coordinate materials testing activities. The Lead Tester/Inspector shall have extensive experience in bridge projects and preferably design build experience.

Location: This position will be co-located in the field offices.

Duration: It is expected that this position be full time for the duration of the project.

**Schedule Reviewer** will be required to complete thorough and timely schedule analysis at the beginning of the project and monthly with each schedule update, and other times as requested by CDOT. The Schedule Reviewer will be required to compare field construction activities/completion levels with the submitted schedules. The Schedule Reviewer shall skills and experience in: Design Build scheduling and review, reading and interpreting plans and specifications, and construction operations, techniques, processes, and durations.

Location: This position will not be co-located in the field office, but shall be on site, as needed, for certain design and construction activities.

Duration: This position is not expected to be full time, but available as needed, during design and construction activities.

**Construction Inspector(s)** four (4) full time construction inspectors will be required to perform roadway, structure, utility, environmental, traffic, and landscaping inspections. Two Construction Inspectors are anticipated for each corridor.

Location: These positions will be co-located in the satellite field offices.

Duration: It is expected that the four positions be full time for most of the duration of the project and others as needed.

**Materials Tester(s)** four (4) full time materials testers will be required to perform field and laboratory tests on materials incorporated into the construction. Two Materials Testers are anticipated for each corridor. These testers shall be certified and experienced in testing and documentation of concrete, hot mix asphalt (HMA), soils, and other materials used.

Location: These positions will be co-located in the satellite field offices.

Duration: It is expected that the four positions be full time for most of the duration of the project and others as needed.

The Consultants shall be certified as defined by the requirements set.

CDOT has developed a Construction Inspector Qualification Program, the following requirements will be mandatory on all CDOT projects.

The following chart, with the appropriate checked certifications, shall be included in all scopes of work.

<b>Class/Certification</b>	<b>Consultant Project Engineer/Manager</b>	<b>Consultant Inspector</b>	<b>Consultant Tester</b>
Basic Highway Math		X	X
Basic Highway Surveying	X	X	X
Basic Highway Plan Reading	X	X	X
Erosion Control Supervisor	X	X	X
<b>Specialty Certifications</b>			
CAPA Asphalt Inspection	X	X	X
Asphalt Inspection	X	X	X
WAQTC		X	X
Major Structures	X	X	
Other (As defined by the RE)			

A copy of work experience, references and/or proof of Licensing shall be provided, before work begins, to the CDOT Project Manager. CDOT shall have discretion on acceptance of proposed personnel.

**Testing Equipment**

The following equipment shall be furnished by the consultant in sufficient quantity and in good working order (with current calibration) to ensure accurate performance of all work required in a timely manner:

- Asphalt Content Gauge
- Nuclear Moisture-Density Gauge
- Concrete air meter, slump cone, and other concrete testing equipment.
- Sieves for aggregates and soil gradations
- Electronic scales
- Asphalt (metal buckets) & A/C (quart cans) sample containers and small tools
- Proctor equipment for soil curves and one point tests
- Atterburg, Rice value, and Sand Equivalent equipment
- Sample drying equipment
- Concrete cylinder molds which meet AASHTO requirements except that paper molds shall not be used, and plastic molds shall not be reused
- Miscellaneous equipment for performing the required soils, asphalt and concrete tests
- Possibly concrete cylinder test machine.

**IV. DESIGN**

**Design Oversight**

The Consultant will support CDOT in the oversight of the Contractor’s project design to verify compliance to the contract requirements. Design oversight will not include the directing of any aspect of the

Contractor's design. Design oversight will be integrated with the Contractor's program for the project to provide verification that the Contractor's Quality Program is being implemented in the design process.

It is expected that the Structure Lead, Roadway Lead, Geotechnical/Materials Lead, Drainage Lead, Traffic Lead, Environmental Lead, Construction Project managers, and EIRC positions will be involved in design oversight.

Design oversight will include the following activities:

- A. Coordination of the design process in accordance with the requirements of subsection 3.5 Design Quality of Section 3 Quality Management, of the RFP and the Contractors Approved Quality Management Plan.
- B. Participation in weekly design task force meetings with the Contractor to coordinate the design development within the Contractor's organizations and with CDOT, other affected agencies and stakeholders.
- C. Coordination with the Contractor to implement Design Progress Review meetings around design completion milestones (30%, 60%, 90%, etc.) and to allow for an informal review of Contractors design development.
- D. A detailed review of design as submitted by the Contractor.
- E. Certification that project designs, reports and plans are in accordance with the requirements of the Contract Documents.
- F. Certification that each Contractor submitted Release for Construction (RFC) Plans meet all Contract requirements.
- G. Coordination with Construction Oversight to verify that designs are being properly implemented in the field, and to coordinate acceptance of design changes required to respond to field conditions.
- H. Design assessments and non-conformance reports
- I. Design oversight will be provided by CDOT and Consultant team members with technical expertise in the following areas:
  - Roadway design.
  - Structure design (including but not limited to, bridges, box culverts, arch structures, and retaining walls)
  - Drainage design (including hydrology, hydraulics, storm water facilities, groundwater, floodplain analysis and mapping, FEMA coordination, storm water management plans and erosion control plans).
  - Utilities coordination and design
  - Irrigation Ditch Canal Company coordination and design oversight with the Otero Ditch

Company and Picketwire Ditch Company.

- Traffic design (including maintenance of traffic, signing, pavement marking, and construction traffic control).
- Geotechnical analysis and design (including foundations design, pavement design, earthwork stabilization, and groundwater analysis).
- Environmental Mitigation (including hazardous materials, water quality, NEPA, preservation of cultural and historical resources, and wetlands preservation).
- Landscaping design

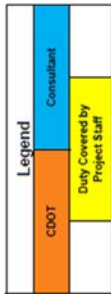
## **V. SUPPLEMENTAL WORK**

It is anticipated that this contract may be supplemented for:

- Construction Services
- Construction Engineering
- Review of the “as-constructed” plans
- Document Transfer
- Filing – Moving documents from field office to 5615 Wills Blvd. office

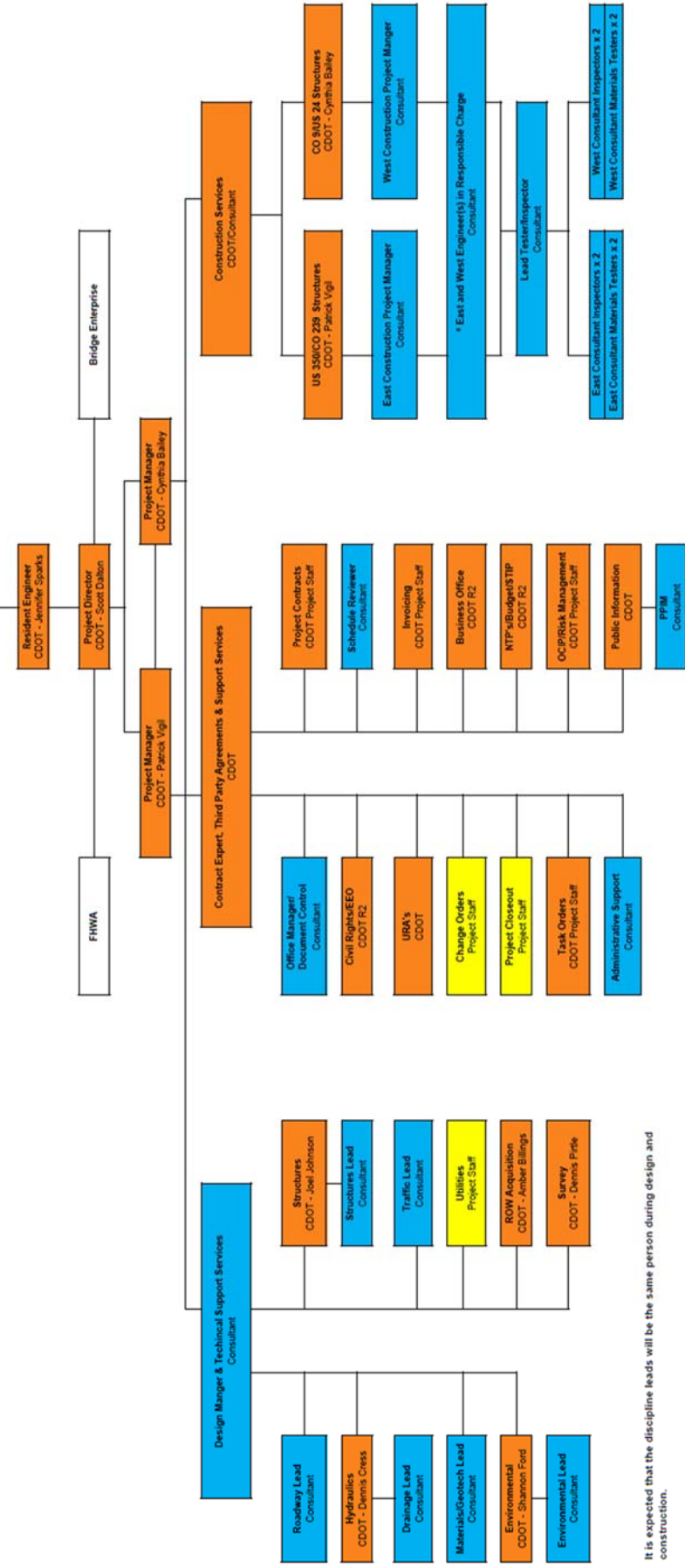
## **VI. STAFFING CHART**

See page 15.



**Region 2 Bridge Bundle Design Build Project**  
FBR R200-266 S/A 23558  
FBR R200-267 S/A 23559

**Executive Oversight Committee**  
Richard Zamora - RTD, Shane Ferguson - Program Engineer, Patrick Holda - CBE, Michael Collins - Staff Bridge, Armando Henriquez - FHWA, Shaun Cuffing - FHWA, Stephen Hareton - Chief Engineer



It is expected that the discipline leads will be the same person during design and construction.