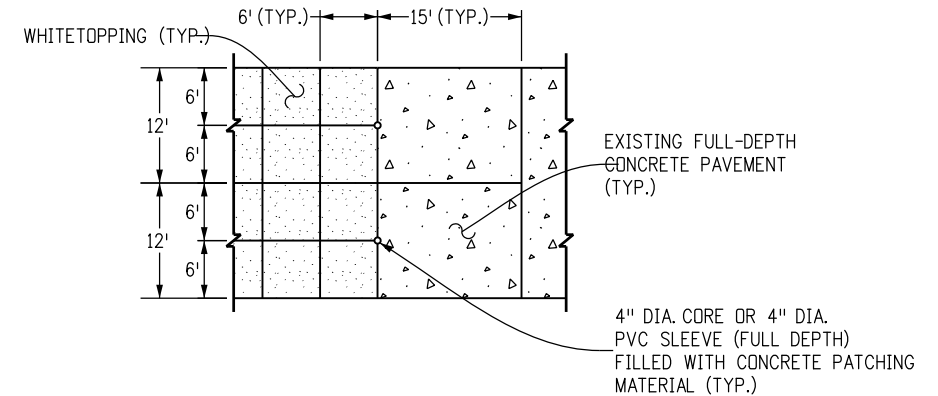
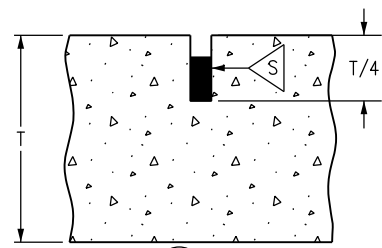


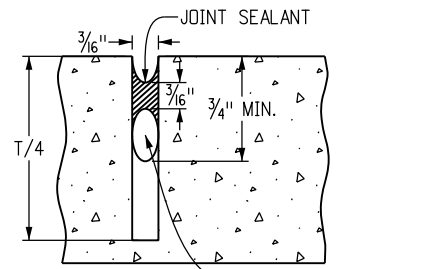
JOINT LAYOUT DETAIL



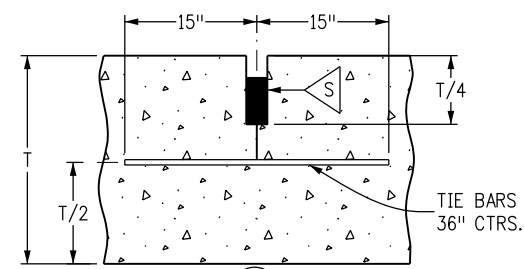
PVC CRACK MITIGATION PLAN DETAIL FOR PAVEMENT TRANSITION JOINTS



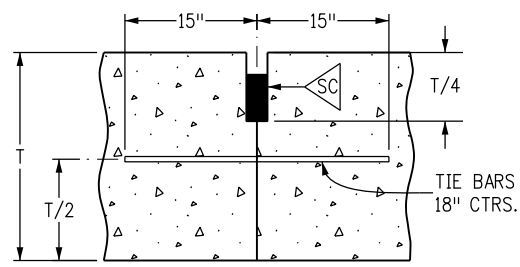
TRANSVERSE CONTRACTION JOINT
(TRANSVERSE WEAKENED PLANE JOINT)



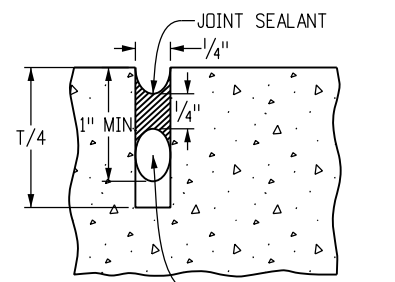
SAWED JOINT



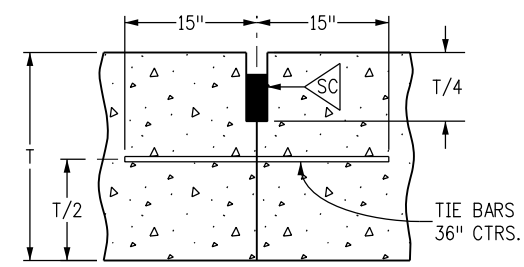
LONGITUDINAL CONTRACTION JOINT
(LONGITUDINAL WEAKENED PLANE JOINT)



TRANSVERSE CONSTRUCTION JOINT



SEAL AT CONSTRUCTION JOINT



LONGITUDINAL CONSTRUCTION JOINT

THIN WHITETOPPING TYPICAL JOINT LAYOUT D-412-2

THIS JOINT LAYOUT DETAIL IS OF A TYPICAL DIVIDED HIGHWAY SHOWING ONLY ONE DIRECTION.
 APPLICATION: CURBS, GUTTERS, AND MEDIANS ARE NOT SHOWN ON THIS DRAWING.
 STANDARD PLAN M-412-1 SHOULD BE SELECTED ON STANDARD PLANS LIST.
 HISTORY: DEVELOPED THROUGH CDOT EXPERIENCE GATHERED ON THIN WHITETOPPING OVERLAY PROJECTS.
 PLEASE CALL THE STANDARDS ENGINEER AT 303-757-9083 FOR ANY QUESTIONS.
 DATE: FEBRUARY 17, 2006
 PLEASE DELETE THIS BLOCK BEFORE USING THIS DETAIL ON A PROJECT. SRJ/LTA

- GENERAL NOTES**
- PAVEMENT THICKNESS, T, SHALL BE SHOWN ON THE PLANS.
 - TIE BAR SIZE SHALL BE NO. 4 AND SHALL BE EPOXY COATED.
 - THIS JOINT LAYOUT IS INTENDED TO BE USED AS A TYPICAL PLAN FOR THE JOINT LAYOUT FOR THE PROJECT. IF THE CONTRACTOR PROPOSES VARIATIONS FROM THIS TYPICAL PLAN OR THE PROJECT HAS UNUSUAL OR IRREGULAR CONDITIONS NOT COVERED HEREIN, THE CONTRACTOR SHALL PREPARE A PAVEMENT JOINT LAYOUT FOR APPROVAL BY THE ENGINEER.
 - TIED LONGITUDINAL CONSTRUCTION JOINTS (L-W) ARE ALLOWED TO FACILITATE PHASING. PROJECT SPECIFIC LOCATIONS SHALL BE DETERMINED BY THE CONTRACTOR FOR APPROVAL BY THE ENGINEER.
 - LONGITUDINAL JOINTS SHALL COINCIDE WITH LANE MARKINGS WHEN POSSIBLE.
 - CONSTRUCT TRANSVERSE JOINTS PERPENDICULAR TO THE CENTERLINE OF PAVEMENT AND EXTEND THROUGH THE CURB OR CURB AND GUTTER.
 - JOINTS SHALL NOT BE SAWED MORE THAN 6 FT. APART IN ANY DIRECTION UNLESS APPROVED BY THE ENGINEER.
 - ALL JOINTS SHALL BE SINGLE CUT AND SEALED WITH AN APPROVED JOINT SEALER.
 - THE CONTRACTOR SHALL, UNLESS OTHERWISE SHOWN ON THE PLANS, SELECT AND USE A BOND BREAKER AT INLETS, MANHOLES AND SIMILAR SIZE STRUCTURES. SMALLER STRUCTURES SUCH AS VALVE AND MONUMENT BOXES SHALL NOT REQUIRE A BOND BREAKER. SEE STANDARD PLAN M-412-1 FOR INLET AND MANHOLE JOINT DETAILS.

Computer File Information		Sheet Revisions		Colorado Department of Transportation		As Constructed		THIN WHITETOPPING TYPICAL JOINT LAYOUT D-412-2		Project No./Code	
Creation Date: 02/17/06	Initials: SRJ	(R-X)	mm/dd/yy XXXXXXXX	XXXXXX	Street Address Office location City, CO Zip code Phone: XXX-XXX-XXXX FAX: XXX-XXX-XXXX Region, Unit Intials/Intials	No Revisions:	mm/dd/yy	Designer: XXXXXXXX Detailer: XXXXXXXX Sheet Subset: XXXXXXXX Subset Sheets: XXX of XXX		Number	
Last Modification Date: 02/17/06	Initials: LTA	(R-X)	mm/dd/yy XXXXXXXX	XXXXXX		Revised:	mm/dd/yy			Code	
Full Path: www.dot.state.co.us/DesignSupport/		(R-X)	mm/dd/yy XXXXXXXX	XXXXXX		Void:	mm/dd/yy			Sheet Number: 1 of 1	
Drawing File Name: D0412020101		(R-X)	mm/dd/yy XXXXXXXX	XXXXXX							
CAD Ver.: MicroStation V8 Scale: Not to Scale Units: English		(R-X)	mm/dd/yy XXXXXXXX	XXXXXX							