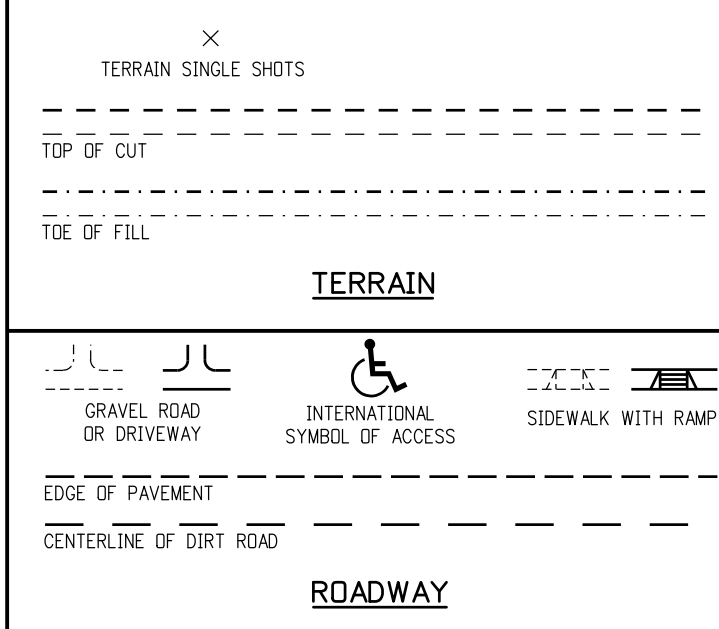
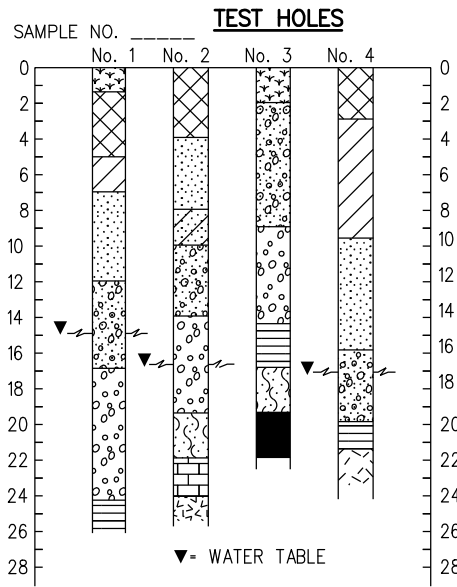


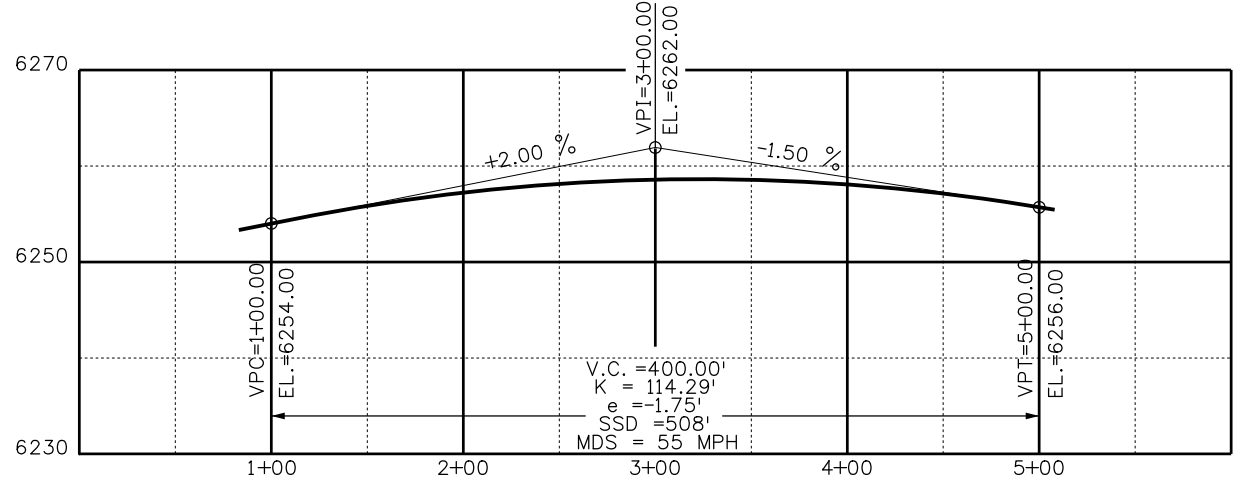
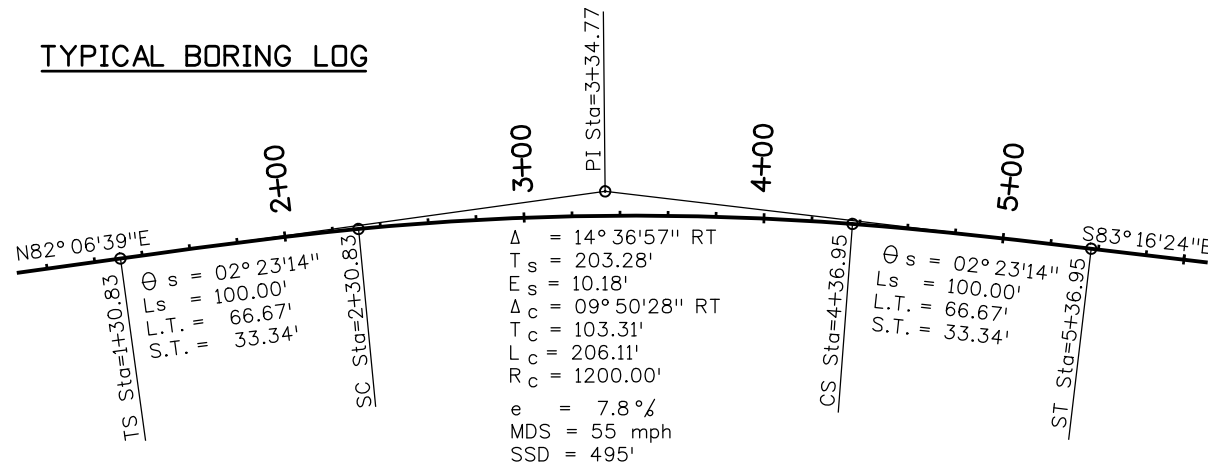
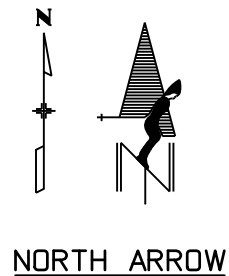
**LEGEND**

	TOPSOIL
	OVERBURDEN
	CLAY
	SILT
	SAND
	GRAVEL
	SHALE
	LIMESTONE
	SANDSTONE
	SOLID ROCK (IGNEOUS)
	SOLID ROCK (METAMORPHIC)
	COAL
	SANDY CLAY

COMPOSITE MATERIALS ARE REPRESENTED BY COMBINATIONS OF THE ABOVE SYMBOLS, SUCH AS:



**TYPICAL BORING LOG**

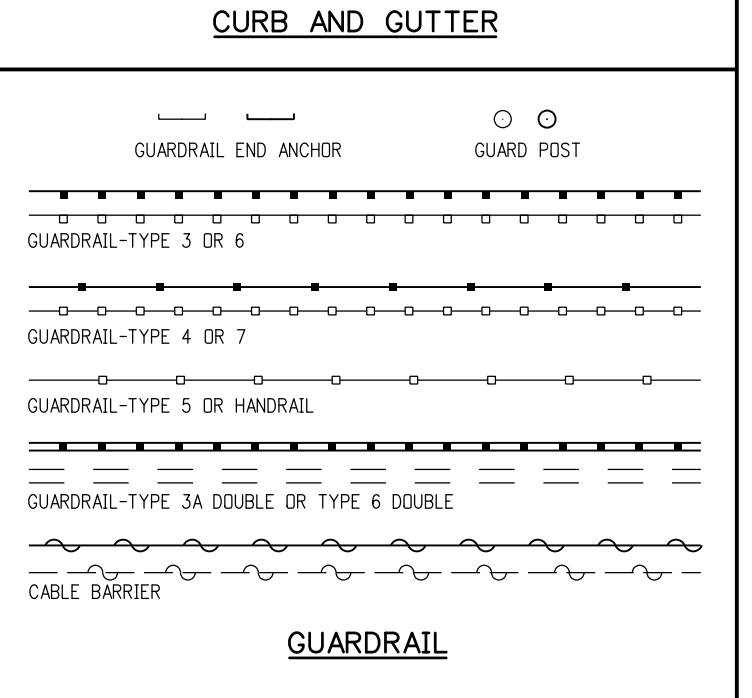
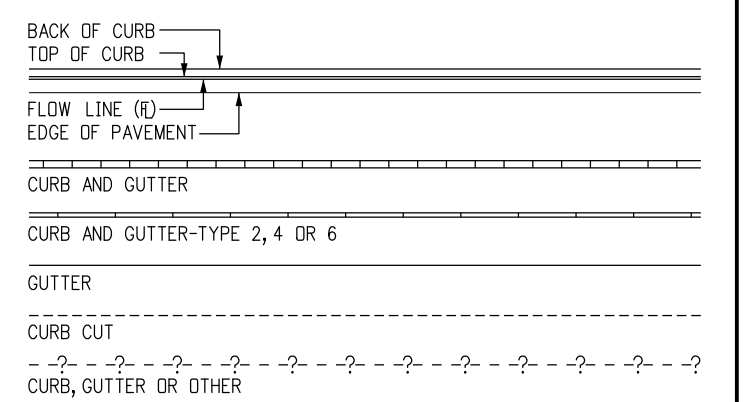


**SURVEY/ROW**

SECTION CORNER	QUARTER, SIXTEENTH, AND SECTION CORNERS	PROTECT EXISTING MARKER
SET EASEMENT MONUMENT	TEMPORARY EASEMENT POINT	RIGHT OF WAY MARKER
BLM MARKER	PROPERTY PIN	NOAA MARKER
FEDERAL MONUMENT	WITNESS CORNER	BENCH MARK
LOCAL OR PLSS MONUMENT	SECONDARY CONTROL MONUMENT	USGS MARKER
PROJECT CONTROL MONUMENT	DENSIFICATION CONTROL MONUMENT	HIGH ACCURACY REFERENCE NETWORK CONTROL MONUMENT
	PERMANENT, PROPERTY, SLOPE, & UTILITY EASEMENT LINE	
	TEMPORARY EASEMENT LINE (EXISTING)	
	PROPERTY BOUNDARY LINE (EXISTING AND PROPOSED)	
	ACCESS CONTROL LINE	
	BARRIER ACCESS CONTROL LINE	
	RIGHT OF WAY LINE	
	VIRGIN RIGHT OF WAY LINE (PROPOSED)	
	CITY LIMIT LINE (EXISTING)	
	COUNTY LINE (EXISTING)	
	QUARTER SECTION LINE	
	SECTION LINE	
	SIXTEENTH SECTION LINE	
	STATE LINE (EXISTING)	
	TOWNSHIP LINE (EXISTING)	

**GENERAL NOTES**

- EXISTING FEATURES SHOWN AS SCREENED WEIGHT (LIGHT GRAY SCALE), EXCEPT AS NOTED WITH THE WORD (EXISTING). PROPOSED OR NEW FEATURES SHOWN AS FULL WEIGHT WITHOUT SCREENING, EXCEPT AS NOTED WITH THE WORD (PROPOSED).
- THESE SYMBOLS ARE INTENDED TO EXPLAIN THE VARIOUS TOPOGRAPHIC FEATURES INVOLVED ON THE DESIGN PLAN SHEETS WHICH ARE PREPARED AT VARIOUS SCALES. NOTES ARE ADDED WHERE NECESSARY TO CLARIFY THE SYMBOL. A LEGEND IS PROVIDED IN THE PLANS FOR SYMBOLS NOT SHOWN ON THE STANDARD SYMBOLS SHEETS.
- GUARDRAIL, CURB AND GUTTER, ETC., ARE REPRESENTED BY A SYMBOL WITH TYPE GIVEN BY NOTE.



**Computer File Information**

Creation Date: 07/31/19
Designer Initials: JBK
Last Modification Date: 07/31/19
Detailer Initials: LTA
CAD Ver.: MicroStation V8 Scale: Not to Scale Units: English

**Sheet Revisions**

Date:	Comments
(R-X)	
(R-X)	
(R-X)	
(R-X)	

Colorado Department of Transportation  
 2829 West Howard Place  
 CDDT HQ, 3rd Floor  
 Denver, CO 80204  
 Phone: 303-757-9021 FAX: 303-757-9868  
 Project Development Branch JBK

**STANDARD SYMBOLS**  
 Issued by the Project Development Branch: July 31, 2019

**STANDARD PLAN NO.**  
 M-100-1  
 Standard Sheet No. 1 of 3  
 Project Sheet Number:

ROCK, MASONRY OR MECHANICALLY STABILIZED WALL (FACE)

BRIDGE CURB

BRIDGE RAIL

BRIDGE RAIL-TYPE 3A

FLOW LINE CBC

STRUCTURES MISCELLANEOUS

### STRUCTURE

COMBINATION WIRE FENCE WITH GATE

CHAIN LINK FENCE WITH GATE

BARBED WIRE FENCE WITH GATE

SOUND OR BARRIER FENCE WITH GATE

DEER FENCE WITH GATE

WOOD FENCE WITH GATE

SNOW FENCE WITH GATE

PLASTIC FENCE

SILT FENCE

DEBRIS FENCE

### FENCE

HAZARD WASTE MONITORING WELL

ENVIRONMENTAL CONCERN SITE

EROSION LOG

ROCK CHECK DAM

CONCRETE WASHOUT STRUCTURE

DROP INLET EROSION PROTECTION

TEMPORARY BERM

SOIL RETENTION BLANKET

PIPE INLET EROSION PROTECTION

RIGID INLET PROTECTION

STORM DRAIN INLET PROTECTION

EROSION CHECK

EROSION LOG DITCH CHECK

SILT DIKE

SEDIMENT TRAP/DEWATERING STRUCTURE

EXISTING WETLAND PATTERN

TEMPORARY SLOPE DRAIN

STABILIZED CONSTRUCTION ENTRANCE

LDA LDA LDA LDA LDA LDA

LIMITS OF DISTURBED AREA

ENVIRONMENTAL CONCERN

HAZARDOUS WASTE SITE

NOXIOUS WEED

FLOW ARROW

### ENVIRONMENTAL

METAL CONCRETE

PIPE WITH END SECTION

HEADWALL

PIPE MISCELLANEOUS

### PIPES

CHECK DAM UNDER 4 FT

HEADGATE 1

DIVERSION BOX SYMBOL

SPRING SYMBOL

FLOW GAUGE

MISCELLANEOUS WATERWAYS

DITCH WITH FLOW

EDGE OF WATER, CANALS, PONDS, STREAM OR RIVER

### DITCHES AND WATERWAY

MISCELLANEOUS BUILDING STRUCTURE (PRIMARY)

MISCELLANEOUS STRUCTURE (SECONDARY)

FOUNDATION OR PAD (CONCRETE OR BLOCK)

### BUILDING STRUCTURES

RR TELEGRAPH POLE

RR SWITCH

RR GUY POLE

RR SIGNALS WITH OR WITHOUT GATE

RR CROSS BUCK SIGN

RR SIGNAL CONTROLLER CABINET

RR MISCELLANEOUS SYMBOL

RR TRACK CENTERLINE

### RAILROAD

DECIDUOUS TREE

DECIDUOUS SHRUB

TEETER TOTTER SYMBOL

SWING SET SYMBOL

CONIFEROUS TREE

CONIFEROUS SHRUB

MISCELLANEOUS TREES

BENCH

SPRINKLER HEAD

TREES GROVE

HEDGE OR SHRUB GROVE

EDGE OF WETLANDS

### LANDSCAPING

SA SA SA

SANITARY SEWER MANHOLE

SANITARY SEWER MISCELLANEOUS SYMBOL

SIZE, MATERIAL, OWNER

SANITARY SEWER PIPE

SANITARY SEWER PIPE MISCELLANEOUS

### SANITARY SEWER

INLET TYPE 13

INLET TYPE C

INLET TYPE D

INLET VANE GRATE

INLET TYPE R XX FT LENGTH

STORM SEWER MANHOLE

MANHOLE EXISTING

STORM SEWER MISCELLANEOUS

STORM SEWER PIPE

STORM SEWER PIPE MISCELLANEOUS

### STORM SEWER

BOULDER UNDER 6FT

GEOLOGY MISC SYMBOL

MINESHAFT SYMBOL

ROCK OUTCROP

BOULDER FIELD OR ROCK OVERHANG

### GEOLOGY

WATER SPIGOT

WATER VALVE

WATER MANHOLE

FIRE HYDRANT

WATER METER

WATER WELL SYMBOL

SIZE, MATERIAL, OWNER

WATER LINE

WATER MISCELLANEOUS LINE

### WATER

Computer File Information	
Creation Date: 07/31/19	
Designer Initials: JBK	(R-X)
Last Modification Date: 07/31/19	(R-X)
Detailer Initials: LTA	(R-X)
CAD Ver.: MicroStation V8 Scale: Not to Scale Units: English	(R-X)

Sheet Revisions	
Date:	Comments

Colorado Department of Transportation

2829 West Howard Place  
 CDDT HQ, 3rd Floor  
 Denver, CO 80204  
 Phone: 303-757-9021 FAX: 303-757-9868

**Project Development Branch** **JBK**

# STANDARD SYMBOLS

Issued by the Project Development Branch: July 31, 2019

STANDARD PLAN NO.  
**M-100-1**  
 Standard Sheet No. 2 of 3  
 Project Sheet Number:

**GAS**

PROPANE TANK, GAS JUNCTION BOX, GAS VAULT, GAS LINE MARKER OR AIR VENT, GAS METER LOW PRESSURE, GAS METER HIGH PRESSURE, GAS MISCELLANEOUS, GAS LIGHT, GAS VALVE HIGH OR LOW PRESSURE

SIZE: G, HP, PG

PROPRANE GAS LINE, GAS LINES MISCELLANEOUS

**LIGHTING**

LIGHT STANDARD, HIGH MAST LIGHT STANDARD, SPOT OR FLOOD LIGHT

**ELECTRICAL**

ELECTRICAL PEDESTAL OR PULL BOX, TRANSMISSION TOWER, WIND POWERED GENERATOR, RELOCATED LIGHT STANDARD, DECORATIVE LIGHT STANDARD, CATENARY POLE FOUNDATION, ELECTRICAL MANHOLE, POWER POLE, TRANSFORMER ON POLE, ELECTRICAL OUTLET, ELECTRICAL MISCELLANEOUS, GUY WIRE, ELECTRICAL VAULT OR TRANSFORMER, GUY POST, FIRE ALARM BOX

ELECTRICAL UNDERGROUND LINE, ELECTRICAL OVERHEAD LINE, ELECTRICAL MISCELLANEOUS LINE

**TELEPHONE**

TELEPHONE GUY POLE, TELEPHONE MANHOLE, TELEPHONE MISCELLANEOUS, FIBER OPTIC CABLE MARKER, COMBINATION POLE-POWER, COMBINATION GUY POLE-POWER, TELEPHONE UNDERGROUND CONDUIT OR CABLE, FIBER OPTICS UNDERGROUND CABLE, TELEPHONE OVERHEAD LINE, TELEPHONE MISCELLANEOUS LINE

**TRAFFIC CONTROL**

TRAVEL DIRECTION, BARRIER LIGHT, FLAGGER, DELINEATOR-TYPE I, SEQUENCING ARROW PANEL, FLASHING BEACON, DELINEATOR-TYPE II, DELINEATOR-TYPE III, BUTTERFLY SIGN, HALF BUTTERFLY SIGN, IMPACT ATTENUATOR, SIGN ASSEMBLY, SINGLE POST SIGN, DOUBLE POST SIGN, SIGN-WITH FLASHING BEACON, ROAD CLOSURE GATE BEACON SYMBOL, ROAD CLOSURE GATE SYMBOL, DEER REFLECTORS, TRAFFIC CONTROL MISCELLANEOUS DEVICE, TRAFFIC CONTROL DEVICE

**OIL**

OIL METER HIGH AND LOW PRESSURE, OIL VALVE HIGH AND LOW PRESSURE, OIL MISCELLANEOUS, OIL LINE LOW OR HIGH PRESSURE, OIL MISCELLANEOUS LINE

**INTELLIGENT TRANSPORTATION SYSTEM**

FIBER MARKER DOME, FIBER MARKER SLATE, RWIS - REMOTE WEATHER SENSOR, VMS-BUTTERFLY, VMS-GROUND, VMS-CANTILEVER, VMS-SIGN BRIDGE, ITS CONDUIT

**TRAFFIC SIGNAL**

DOUBLE MAST ARM POLE, SIGNAL SPAN WIRE POLE, LUMINAIRE, SIGNAL FACE, SIGNAL POLE WITH MAST ARM, SIGNAL FACE WITH BACKPLATE, SIGNAL CONTROLLER AND CABINET (4 FT), TELEMETRY ANTENNA, PULL BOX, MICRODETECTOR, VIDEO DETECTION CAMERA, FIRE PREEMPTION UNIT AND TIMER, PEDESTRIAN SIGNAL FACE, PEDESTRIAN PUSH BUTTON, PEDESTAL POLE, PULL BOX SPECIAL, TRAFFIC CONDUIT

**MISCELLANEOUS TOPOGRAPHY**

GRAVE HEADSTONE SYMBOL, MAIL DROP BOX, FLAG POLE, TRASH BARREL POST, GRAVE SYMBOL, RADIO STATION ANTENNA, MISCELLANEOUS TOPOGRAPHY

**TELEVISION**

CABLE TV POLE, CABLE TV RISER, COMBINATION POLE-POWER, TELEPHONE, TV ANTENNA, TV MISCELLANEOUS, TV MANHOLE, TV UNDERGROUND CABLE, TV OVERHEAD CABLE, TV MISCELLANEOUS CABLE

**TRAFFIC STRIPING**

CENTER YELLOW SOLID DOUBLE, CENTER YELLOW SOLID BROKEN (NO PASS), 4 INCH WIDE, 8 INCH WIDE, LANE LINE BROKEN, LANE DROP, CHANNELIZING OR EDGE LINE, 4 INCH WIDE, 8 INCH WIDE, DOTTED BROKEN, STOP LINE, INTERNATIONAL SYMBOL OF ACCESS, RAILROAD CROSSING, BICYCLE PED ACCESS

**CAMPING**

CAMPSITE MARKER, TRAILER ELECTRIC HOOKUP, TRAILER DUMP STATION, CAMPFIRE RING, TRAILER SEWER INLET, TRAILER WATER HOOKUP, CAMPSITE GRILL, CAMPSITE TABLE

**Computer File Information**

Creation Date: 07/31/19
Designer Initials: JBK
Last Modification Date: 07/31/19
Detailer Initials: LTA
CAD Ver.: MicroStation V8 Scale: Not to Scale Units: English

**Sheet Revisions**

Date:	Comments
(R-X)	
(R-X)	
(R-X)	
(R-X)	

Colorado Department of Transportation  
 2829 West Howard Place  
 CDDT HQ, 3rd Floor  
 Denver, CO 80204  
 Phone: 303-757-9021 FAX: 303-757-9868  
 Project Development Branch JBK

**STANDARD SYMBOLS**

Issued by the Project Development Branch: July 31, 2019

**STANDARD PLAN NO.**  
 M-100-1  
 Standard Sheet No. 3 of 3  
 Project Sheet Number: