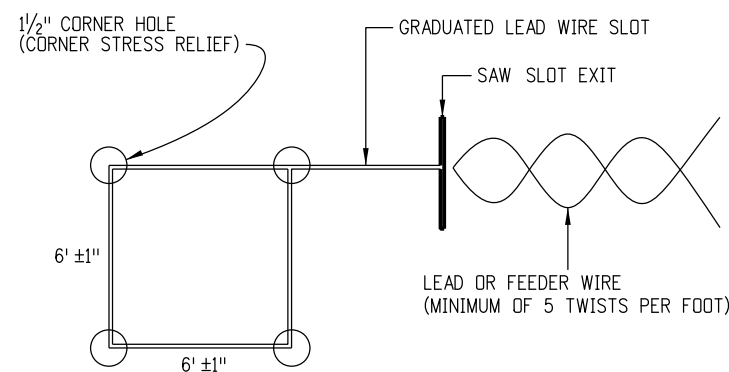


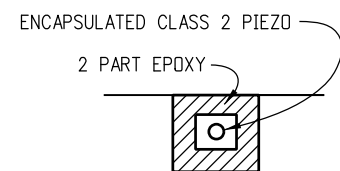
LOOP GEOMETRICS AND INSTALLATION

GENERAL NOTES

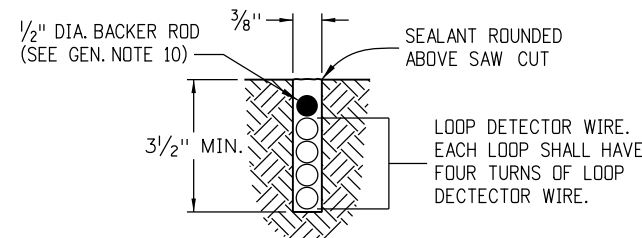
1. ALL DETECTOR LOOPS SHALL MEASURE 6 FT. X 6 FT. (WITHIN 1 INCH TOLERANCE).
2. LOOPS SHALL BE CENTERED IN THE TRAVEL LANE WITH TWO SIDES PARALLEL TO THE LANE STRIPING.
3. ALL LOOP, LOOP LEAD, AND FEEDER WIRE SAW SLOTS SHALL BE CUT TO A MINIMUM DEPTH OF 3/2 INCHES.
4. SLOTS SHALL BE SAWED AFTER PLANING AND BEFORE LAYING OF THE FIRST LIFT OF PAVEMENT WHEN APPLICABLE.
5. ALL LOOP CORNERS SHALL BE ROUNDED USING A 1/2 INCH HOLE DRILLED TO A MINIMUM DEPTH OF 3/2 INCHES.
6. MINIMUM SAW SLOT WIDTH SHALL BE 3/8 INCH.
7. BEFORE INSTALLATION OF THE WIRE, ALL SAW SLOTS SHALL BE CLEANED OF DEBRIS USING WATER AND COMPRESSED AIR. SURFACE AND SLOTS MUST BE ALLOWED TO DRY.
8. ALL LOOPS SHALL BE FOUR TURNS OF THE ABOVE SPECIFIED LOOP WIRE. THE WIRE SHALL BE SEATED IN THE BOTTOM OF THE SAW SLOT.
9. WIRE SPLICES WILL NOT BE PERMITTED IN THE SAW SLOTS. ALL LOOPS SHALL BE CONTINUOUS IN THE PAVEMENT AND TO THE PULL BOX.
10. A BACKER ROD WITH 1/2 INCH DIA. SHALL BE INSTALLED TO INSURE WIRES DO NOT FLOAT TO THE SURFACE DURING GROUTING.
11. ALL SAW SLOTS AND DRILL HOLES SHALL BE SEALED USING A TWO-PART SELF CURING, SELF BONDING WEATHERPROOF EPOXY. EXCESS EPOXY SHALL BE REMOVED TO AVOID UNNECESSARY HIGH SPOTS.
12. PIEZO SENSORS SHALL BE INSTALLED AT THE EXACT MIDPOINT BETWEEN THE LOOPS IN EACH LANE AND TO THE RIGHT OR LEFT SIDE OF THE LINE, CENTERED IN THE WHEEL PATH.
13. PIEZO SENSORS SHALL BE INSTALLED IN COMPLIANCE WITH THE MANUFACTURER'S SPECIFICATIONS, A COPY OF WHICH SHALL BE SUPPLIED TO THE ENGINEER PRIOR TO INSTALLATION.
14. LOOP SETS (TWO LOOPS IN A SERIES) WITHIN A SINGLE LANE SHALL BE SEPARATED BY 10 FEET RESULTING IN A DISTANCE OF 16 FEET FROM LEADING EDGE TO LEADING EDGE (WITHIN 1 INCH TOLERANCE).
15. NO MORE THAN ONE SET OF LOOP LEAD WIRES SHALL BE PLACED IN A SAW SLOT.
16. PULL BOXES MUST CONTAIN AN ADDITIONAL 3 FEET OF LOOP WIRE WHICH ENTERS AND/OR EXITS THE PULL BOX.
17. ALL LOOPS AND LOOP LEADS SHALL BE CLEARLY LABELED IN EACH PULL BOX.
18. MULTIPLE PAIR BELDEN CABLE MAY BE USED IN CONDUIT.
19. COORDINATE INSTALLATION WITH MIKE DELCUPP, CDOT DIVISION OF TRANSPORTATION DEVELOPMENT, AT 303-757-9816. CALL 5 DAYS IN ADVANCE FOR LAYOUT ASSISTANCE.



**DETAIL A
LOOP DETECTOR WIRE**

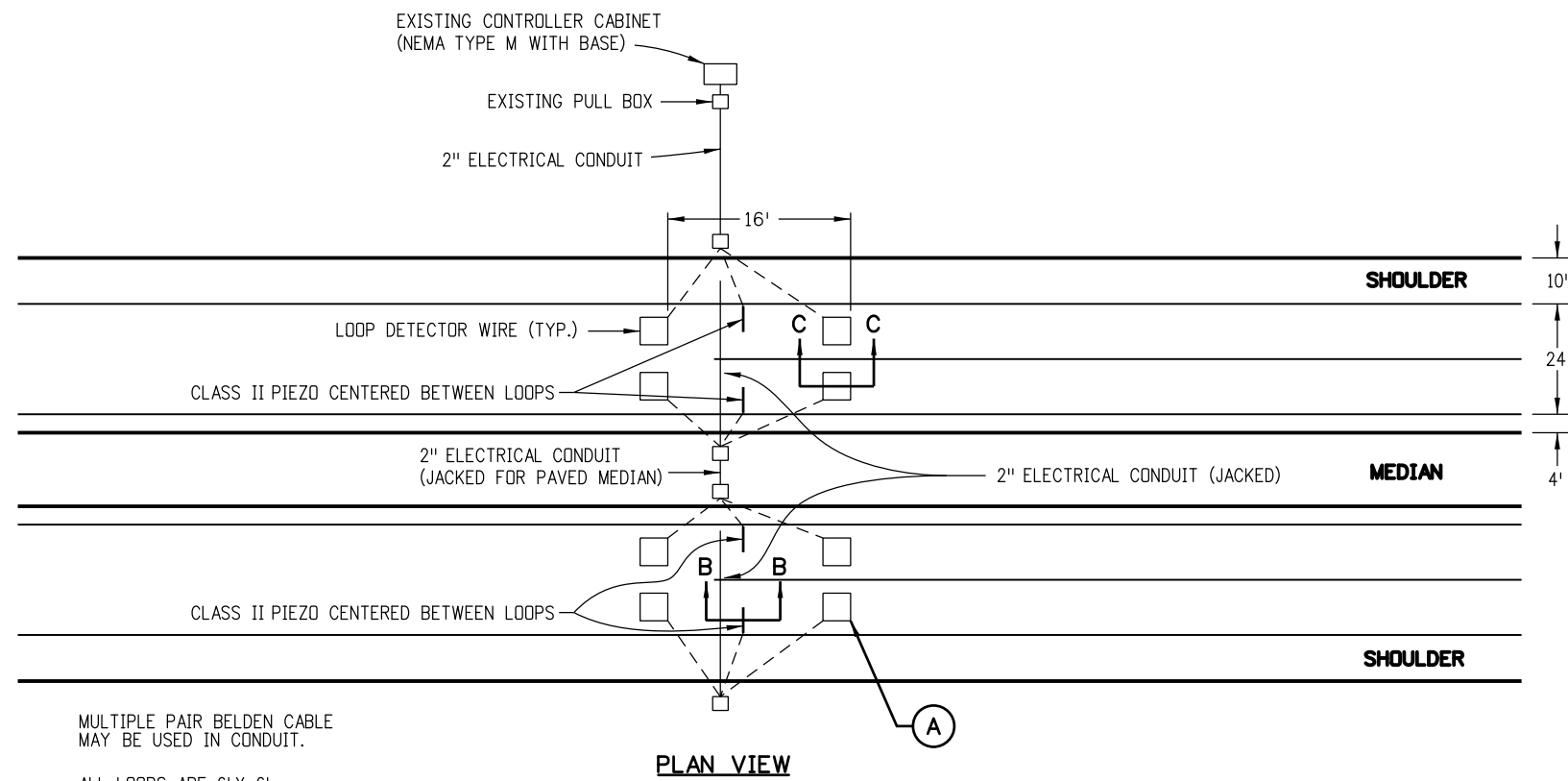


**SECTION B-B
TYPICAL PIEZO SECTION**



**SECTION C-C
LOOP DETECTOR WIRE INSTALLATION**

Computer File Information		Sheet Revisions		Colorado Department of Transportation		As Constructed		PIEZO LOOP DETECTOR INSTALLATION DETAIL		Project No./Code	
Creation Date: 07/31/19		(R-X)	mm/dd/yy	XXXXXXX	XXXXXX	Street Address		Designer: XXXXXXXX		XXXXX/XXXX	
Designer Initials: JBK		(R-X)	mm/dd/yy	XXXXXXX	XXXXXX	Office location				D-614-2	
Last Modification Date: 07/31/19		(R-X)	mm/dd/yy	XXXXXXX	XXXXXX	City, CO Zip code		Detailer: XXXXXXXX		Sheet Number: 1 of 2	
Detailer Initials: LTA		(R-X)	mm/dd/yy	XXXXXXX	XXXXXX	Phone: XXX-XXX-XXXX Fax: XXX-XXX-XXXX		Sheet Subset: XXXXXXXX		Subset Sheets: XXX of XXX	
CAD Ver.: MicroStation V8 Scale: Not to Scale Units: English		(R-X)	mm/dd/yy	XXXXXXX	XXXXXX	Region, Unit		Void: mm/dd/yy		Project Sheet Number: XX	



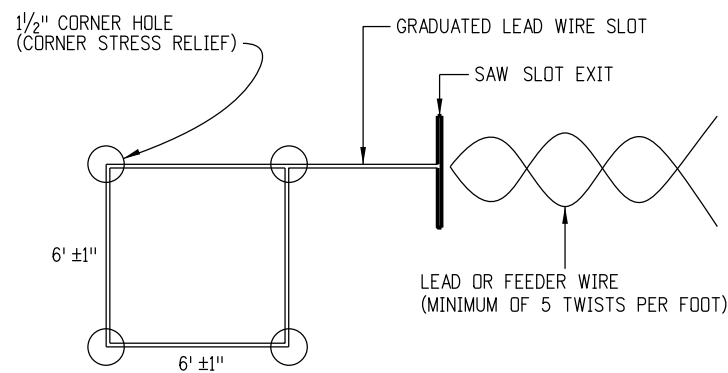
MULTIPLE PAIR BELDEN CABLE
MAY BE USED IN CONDUIT.

ALL LOOPS ARE 6' X 6'
ON 16' CENTERS

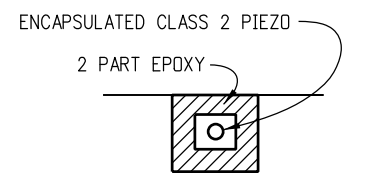
LOOP GEOMETRICS AND INSTALLATION

GENERAL NOTES

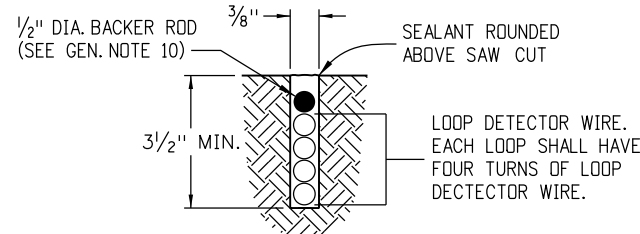
1. ALL DETECTOR LOOPS SHALL MEASURE 6 FT. X 6 FT. (WITHIN 1 INCH TOLERANCE).
2. LOOPS SHALL BE CENTERED IN THE TRAVEL LANE WITH TWO SIDES PARALLEL TO THE LANE STRIPING.
3. ALL LOOP, LOOP LEAD, AND FEEDER WIRE SAW SLOTS SHALL BE CUT TO A MINIMUM DEPTH OF 3 1/2 INCHES.
4. SLOTS SHALL BE SAWED AFTER PLANING AND BEFORE LAYING OF THE FIRST LIFT OF PAVEMENT WHEN APPLICABLE.
5. ALL LOOP CORNERS SHALL BE ROUNDED USING A 1 1/2 INCH HOLE DRILLED TO A MINIMUM DEPTH OF 3 1/2 INCHES.
6. MINIMUM SAW SLOT WIDTH SHALL BE 3/8 INCH.
7. BEFORE INSTALLATION OF THE WIRE, ALL SAW SLOTS SHALL BE CLEANED OF DEBRIS USING WATER AND COMPRESSED AIR. SURFACE AND SLOTS MUST BE ALLOWED TO DRY.
8. ALL LOOPS SHALL BE FOUR TURNS OF THE ABOVE SPECIFIED LOOP WIRE. THE WIRE SHALL BE SEATED IN THE BOTTOM OF THE SAW SLOT.
9. WIRE SPLICES WILL NOT BE PERMITTED IN THE SAW SLOTS. ALL LOOPS SHALL BE CONTINUOUS IN THE PAVEMENT AND TO THE PULL BOX.
10. A BACKER ROD WITH 1/2 INCH DIA. SHALL BE INSTALLED TO INSURE WIRES DO NOT FLOAT TO THE SURFACE DURING GROUTING.
11. ALL SAW SLOTS AND DRILL HOLES SHALL BE SEALED USING A TWO-PART SELF CURING, SELF BONDING WEATHERPROOF EPOXY. EXCESS EPOXY SHALL BE REMOVED TO AVOID UNNECESSARY HIGH SPOTS.
12. PIEZO SENSORS SHALL BE INSTALLED AT THE EXACT MIDPOINT BETWEEN THE LOOPS IN EACH LANE AND TO THE RIGHT OR LEFT SIDE OF THE LINE, CENTERED IN THE WHEEL PATH.
13. PIEZO SENSORS SHALL BE INSTALLED IN COMPLIANCE WITH THE MANUFACTURER'S SPECIFICATIONS, A COPY OF WHICH SHALL BE SUPPLIED TO THE ENGINEER PRIOR TO INSTALLATION.
14. LOOP SETS (TWO LOOPS IN A SERIES) WITHIN A SINGLE LANE SHALL BE SEPARATED BY 10 FEET RESULTING IN A DISTANCE OF 16 FEET FROM LEADING EDGE TO LEADING EDGE (WITHIN 1 INCH TOLERANCE).
15. NO MORE THAN ONE SET OF LOOP LEAD WIRES SHALL BE PLACED IN A SAW SLOT.
16. PULL BOXES MUST CONTAIN AN ADDITIONAL 3 FEET OF LOOP WIRE WHICH ENTERS AND/OR EXITS THE PULL BOX.
17. ALL LOOPS AND LOOP LEADS SHALL BE CLEARLY LABELED IN EACH PULL BOX.
18. COORDINATE INSTALLATION WITH MIKE DELCUPP, CDOT DIVISION OF TRANSPORTATION DEVELOPMENT, AT 303-757-9816. CALL 5 DAYS IN ADVANCE FOR LAYOUT ASSISTANCE.



DETAIL A
LOOP DETECTOR WIRE



SECTION B-B
TYPICAL PIEZO SECTION



SECTION C-C
LOOP DETECTOR WIRE INSTALLATION

Computer File Information	Sheet Revisions	Colorado Department of Transportation	As Constructed	PIEZO LOOP DETECTOR INSTALLATION DETAIL	Project No./Code
Creation Date: 07/31/19	(R-X) mm/dd/yy XXXXXXXX XXXXXX	Street Address Office location City, CO Zip code Phone: XXX-XXX-XXXX Fax: XXX-XXX-XXXX Region, Unit Intials/Intials	No Revisions: mm/dd/yy	Designer: XXXXXXXX Detailer: XXXXXXXX Sheet Subset: XXXXXXXX Subset Sheets: XXX of XXX	XXXXXX/XXXX
Designer Initials: JBK	(R-X) mm/dd/yy XXXXXXXX XXXXXX		Revised: mm/dd/yy		D-614-2
Last Modification Date: 07/31/19	(R-X) mm/dd/yy XXXXXXXX XXXXXX		Void: mm/dd/yy		Sheet Number: 2 of 2
Detailer Initials: LTA	(R-X) mm/dd/yy XXXXXXXX XXXXXX				Project Sheet Number: XX
CAD Ver.: MicroStation V8 Scale: Not to Scale Units: English	(R-X) mm/dd/yy XXXXXXXX XXXXXX				