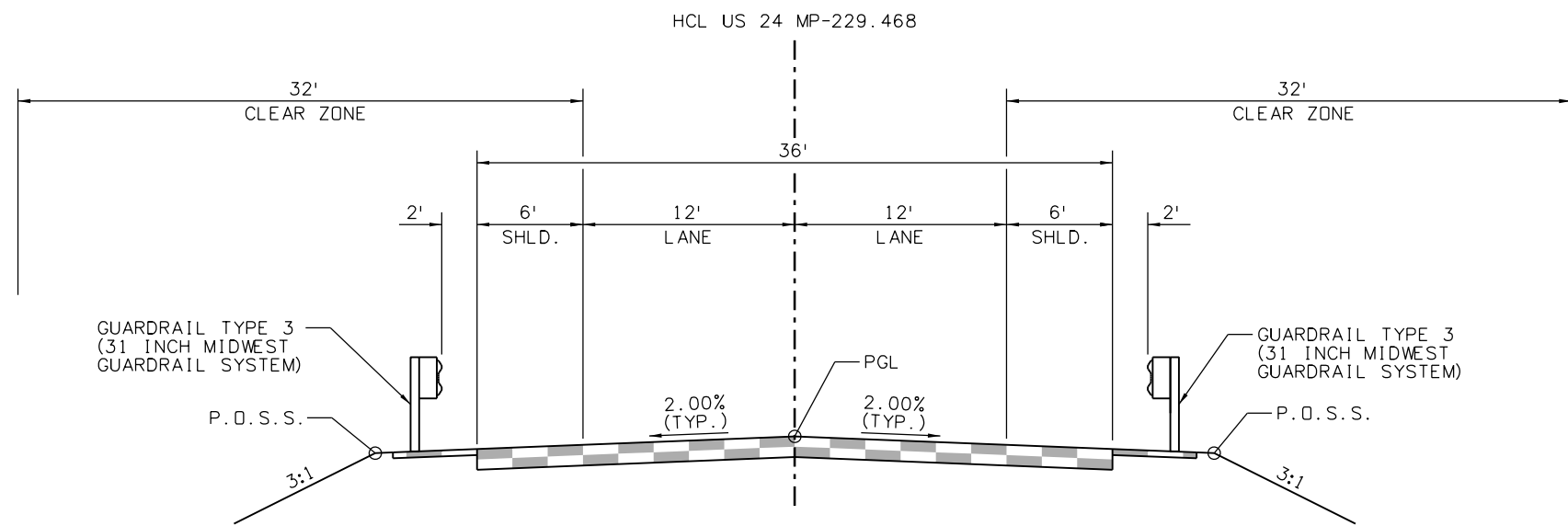
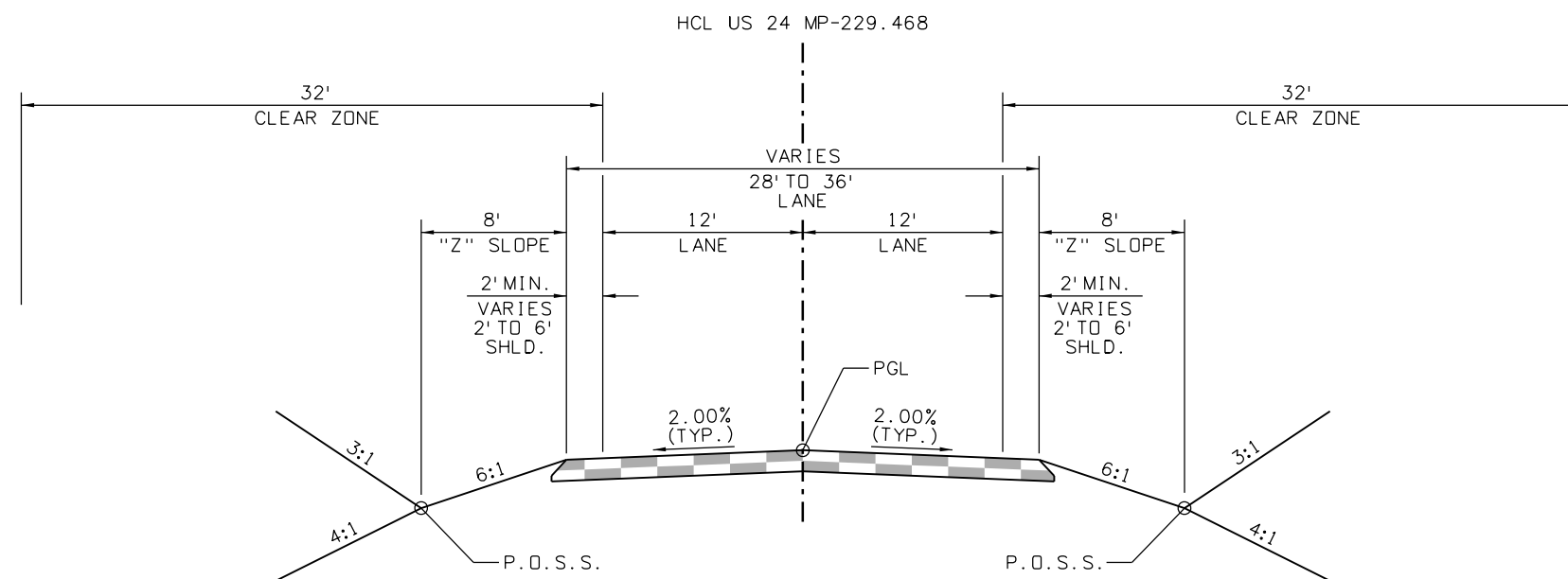


9356 7:24:06 AM pw:\SCI-PW\INTEG-2.stanleygroup.com\Datasource-1\Documents\Colorado_Department_of_Transportation\29715 - CDDT R2 Bridge Bundle\11-CADD\Worksets\29175\DGNS\Design\Sheets\23558DES_US 24 MP 229.468_Typ.dgn



US 24 MP-229.468
TYPICAL SECTION
 423+35.33 TO 426+64.67



US 24 MP-229.468
TYPICAL SECTION
 420+20.00 TO 423+35.33
 426+64.67 TO 429+12.78

Print Date: 2/18/2021 File Name: 23558DES_US 24 MP 229.468_Typ.dgn

Horiz. Scale: Vert. Scale: As Noted

8000 South Chester St.
 Suite 500
 Centennial, CO 80112
 INC. Phone: 303-799-6806

Sheet Revisions		
Date:	Comments	Init.

Colorado Department of Transportation

5615 Wills Blvd
 Pueblo, CO 81008
 Phone: 719-546-5753
 FAX: 719-546-5402

Region 2 JLS

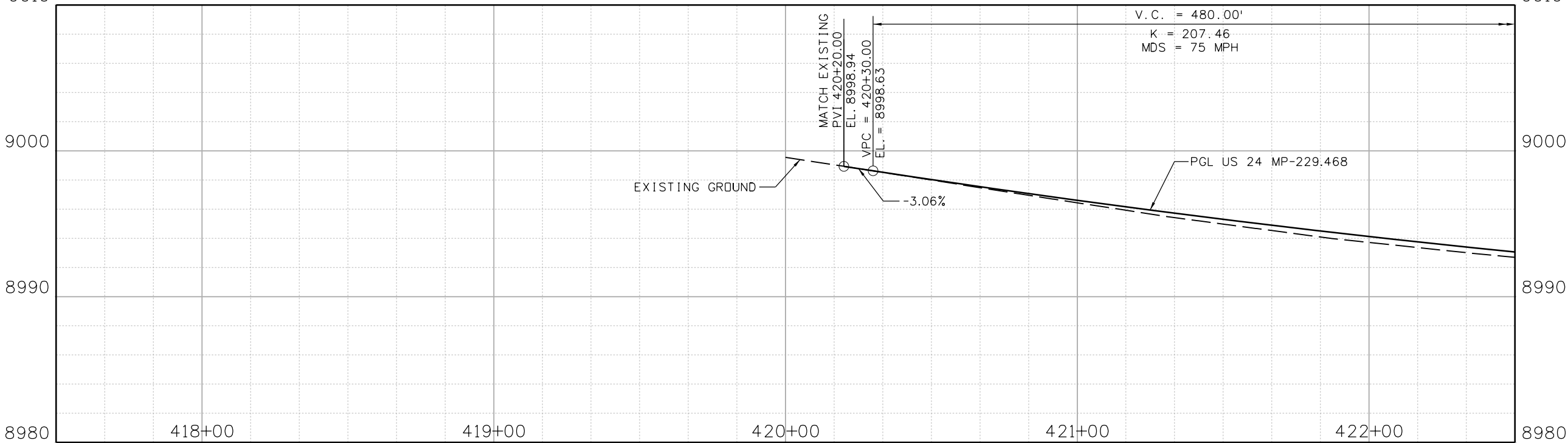
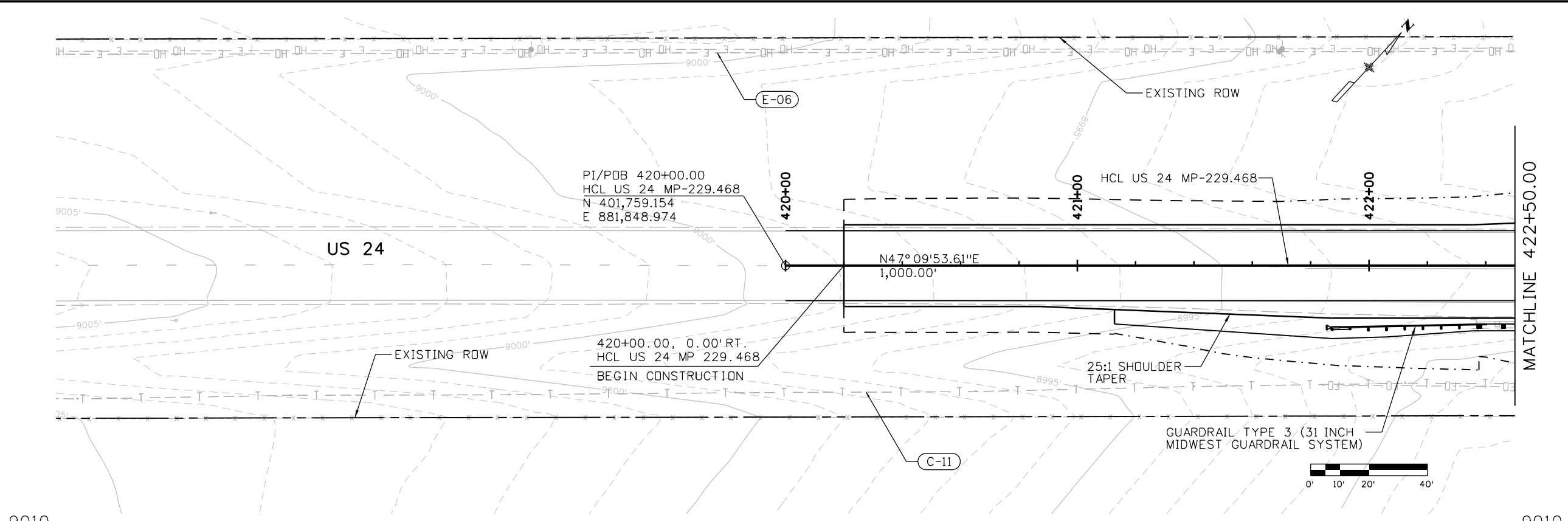
As Constructed
No Revisions:
Revised:
Void:

REGION 2 BRIDGE BUNDLE US 24 OVER SEASONAL WASH TYPICAL SECTIONS			
Designer:	R. HANSON	Structure No.	I-13-H
Detailer:	E. LUEETH	M.P.	US 24 229.468
Sheet Subset:	TYP	Subset Sheets:	1 of 1

Project No./Code
Sheet Number

9356 7:24:18 AM pw:\SCI-PW\INTEG-2.stanleygroup.com\Datasource-1\Documents\Colorado\Department_of_Transportation\29715 - CDDT R2 Bridge Bundle\11-CADD\Worksets\29715\DGNS\Design\Sheets\23558DES_US 24 MP 229.468_P&P Sheets.dgn

LEGEND:
 (C-19) - UTILITY ID NO.



Print Date: 2/18/2021 File Name: 23558DES_US 24 MP 229.468_P&P Sheets.dgn
 Horiz. Scale: Vert. Scale: As Noted

 8000 South Chester St.
 Suite 500
 Centennial, CO 80112
 INC. Phone: 303-799-6806

Sheet Revisions		
Date:	Comments	Init.

Colorado Department of Transportation

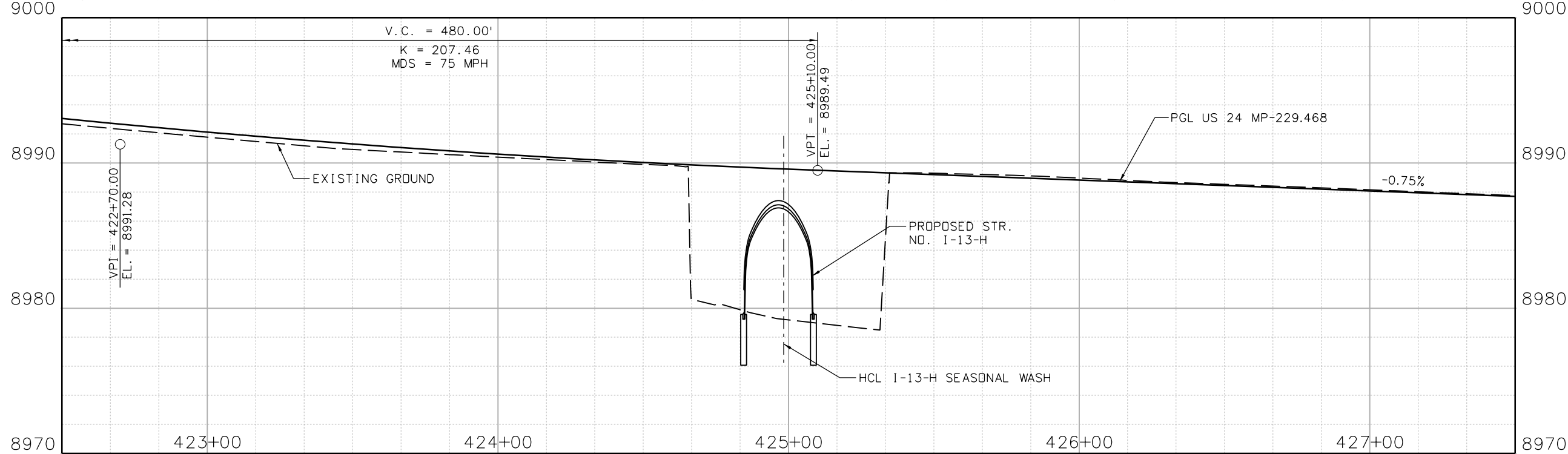
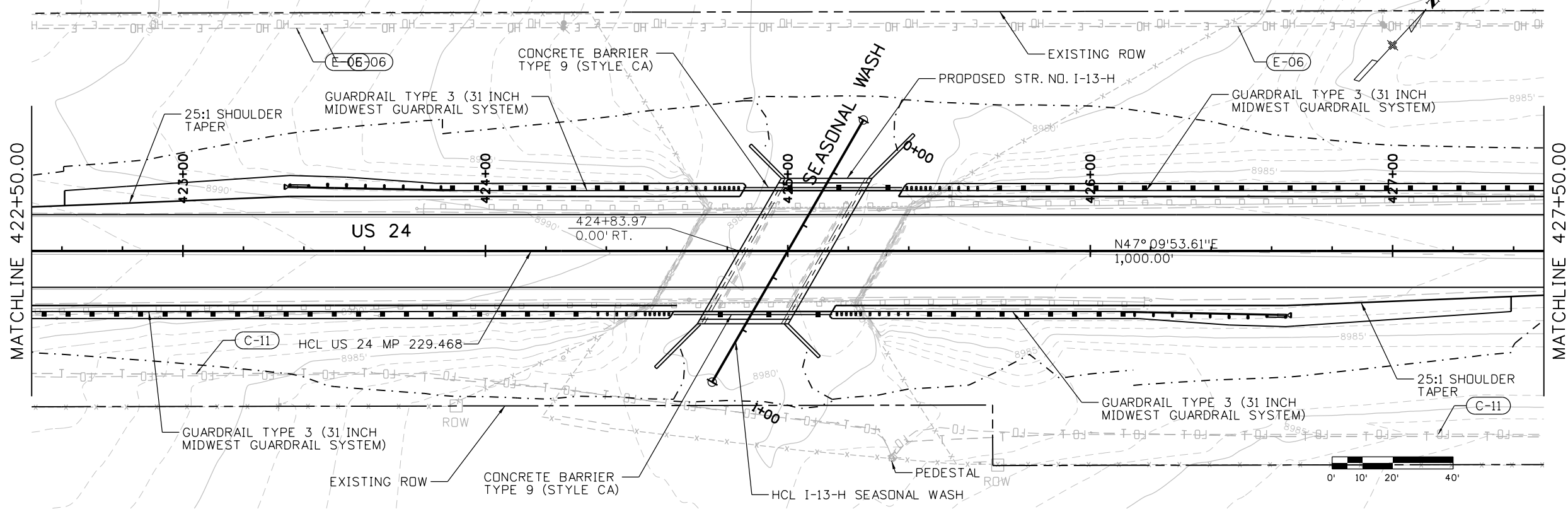
 5615 Wills Blvd
 Pueblo, CO 81008
 Phone: 719-546-5753
 FAX: 719-546-5402
Region 2 JLS

As Constructed
 No Revisions:
 Revised:
 Void:

**REGION 2 BRIDGE BUNDLE
 US 24 OVER SEASONAL WASH
 ROADWAY PLAN AND PROFILE**
 Designer: R. HANSON Structure No. I-13-H
 Detailer: E. EARL M.P. US 24 229.468
 Sheet Subset: ROADWAY Subset Sheets: 1 of 3

Project No./Code
 Sheet Number

LEGEND:
 (C-19) - UTILITY ID NO.



Print Date: 2/18/2021 File Name: 23558DES_US 24 MP 229.468_P&P Sheets.dgn
 Horiz. Scale: Vert. Scale: As Noted



Sheet Revisions		
Date:	Comments	Init.

Colorado Department of Transportation
 5615 Wills Blvd
 Pueblo, CO 81008
 Phone: 719-546-5753
 FAX: 719-546-5402

Region 2 JLS

As Constructed
No Revisions:
Revised:
Void:

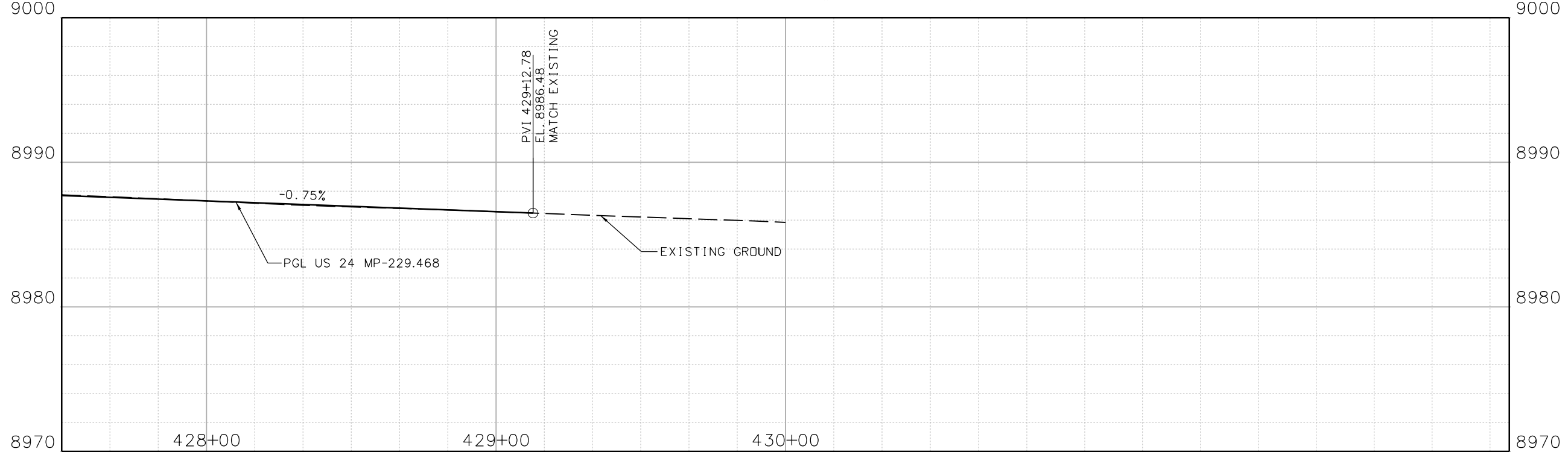
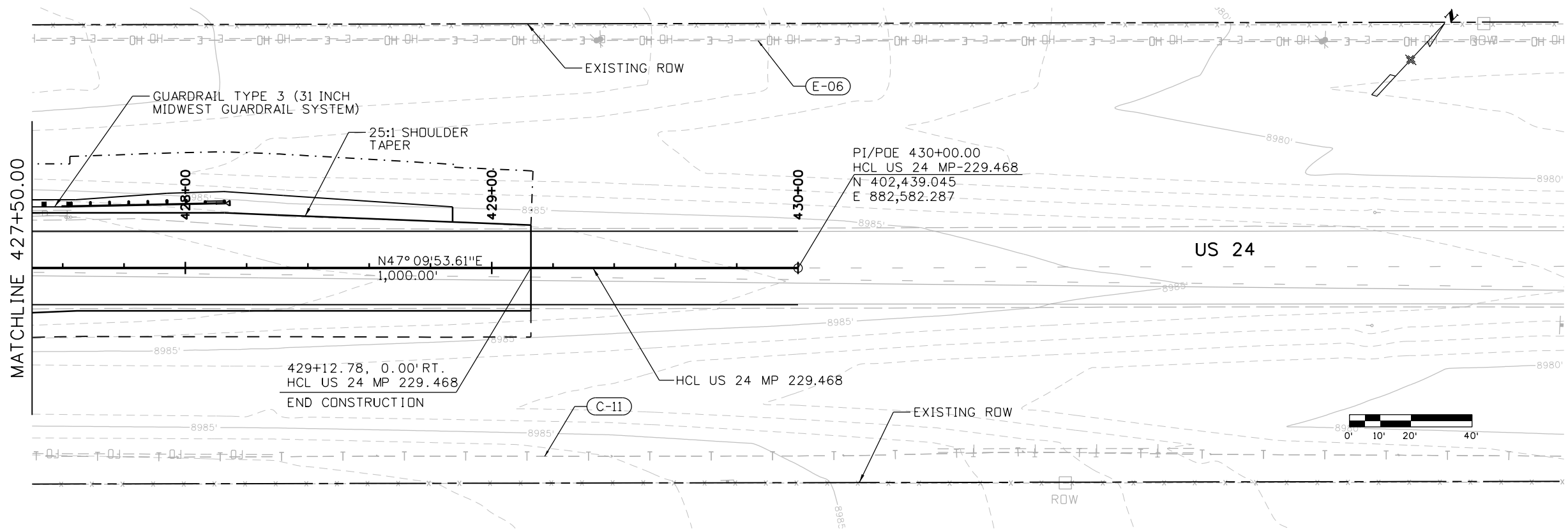
REGION 2 BRIDGE BUNDLE US 24 OVER SEASONAL WASH ROADWAY PLAN AND PROFILE			
Designer:	R. HANSON	Structure No.	I-13-H
Detailer:	E. EARL	M.P.	US 24 229.468
Sheet Subset:	ROADWAY	Subset Sheets:	2 of 3

Project No./Code
Sheet Number

9356 7:24:20 AM pw:\SCI-PW\NTEG-2.stanleygroup.com\Datasource-1\Documents\Colorado_Department_of_Transportation\29715 - CDDT R2 Bridge Bundle\11-CADD\Worksets\29175\DGNS\Design\Sheets\23558DES_US 24 MP 229.468_P&P Sheets.dgn

LEGEND:

(C-19) - UTILITY ID NO.



Print Date: 2/18/2021 File Name:

23558DES_US 24 MP 229.468_P&P Sheets.dgn

Horiz. Scale: Vert. Scale: As Noted



8000 South Chester St.
Suite 500
Centennial, CO 80112
Phone: 303-799-6806

Sheet Revisions

Date:	Comments	Init.

Colorado Department of Transportation



5615 Wills Blvd
Pueblo, CO 81008
Phone: 719-546-5753
FAX: 719-546-5402

Region 2

JLS

As Constructed

No Revisions:

Revised:

Void:

**REGION 2 BRIDGE BUNDLE
US 24 OVER SEASONAL WASH
ROADWAY PLAN AND PROFILE**

Designer: R. HANSON Structure No. I-13-H

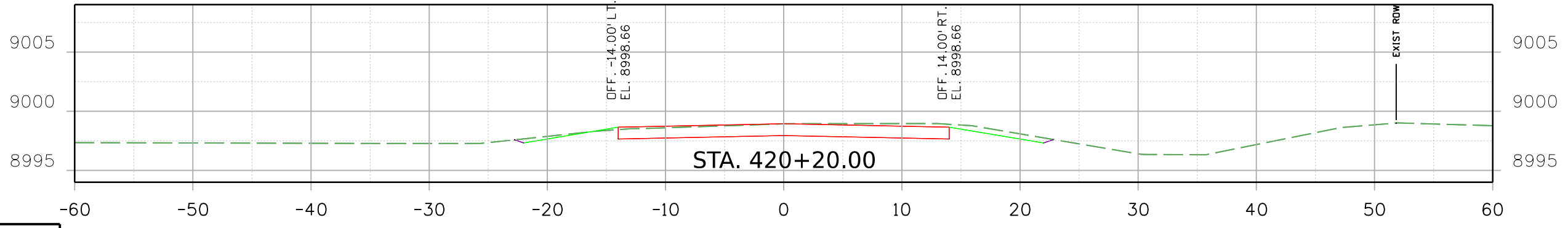
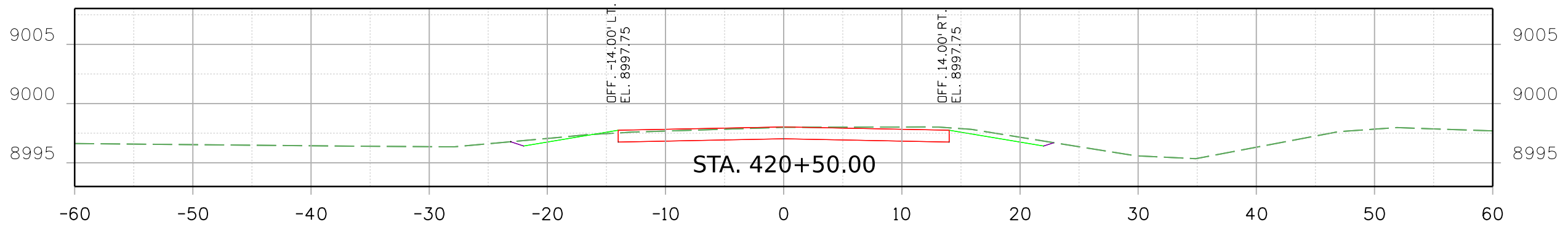
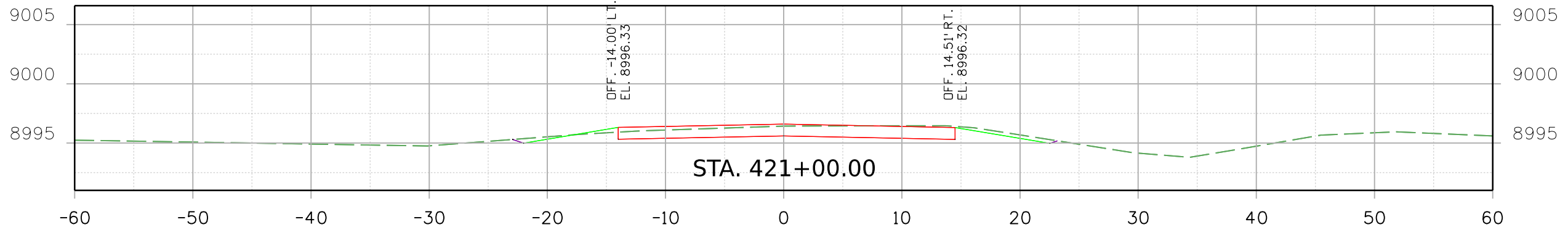
Detailer: E. EARL M.P. US 24 229.468

Sheet Subset: ROADWAY Subset Sheets: 3 of 3


Project No./Code

Sheet Number

9356 7:24:30 AM pw:\SCI-PW\NTEG-2.stanleygroup.com\Datasource-1\Documents\Colorado_Department_of_Transportation\29715 - CDDT R2 Bridge Bundle\11-CADD\Worksets\29175\DGNS\Design\Sheets\23558DES_US_24_MP_229.468_Xsec.dgn



Print Date: 2/18/2021 File Name:
23558DES_US_24_MP_229.468_Xsec.dgn
Horiz. Scale: Vert. Scale: As Noted

 Stanley Consultants INC.
8000 South Chester St.
Suite 500
Centennial, CO 80112
Phone: 303-799-6806

Sheet Revisions		
Date:	Comments	Init.

Colorado Department of Transportation

 5615 Wills Blvd
Pueblo, CO 81008
Phone: 719-546-5753
FAX: 719-546-5402

Region 2 JLS

As Constructed

No Revisions:

Revised:

Void:

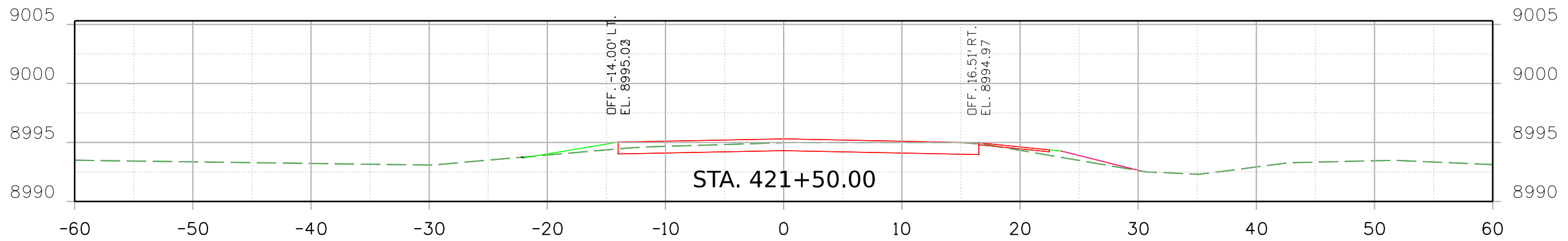
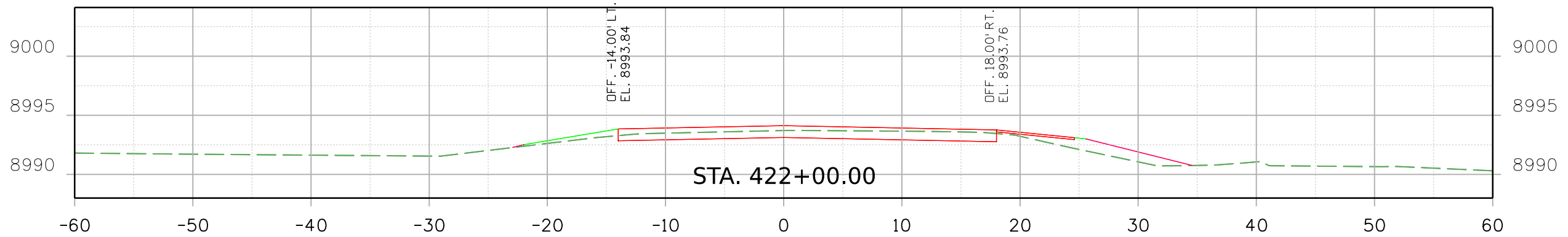
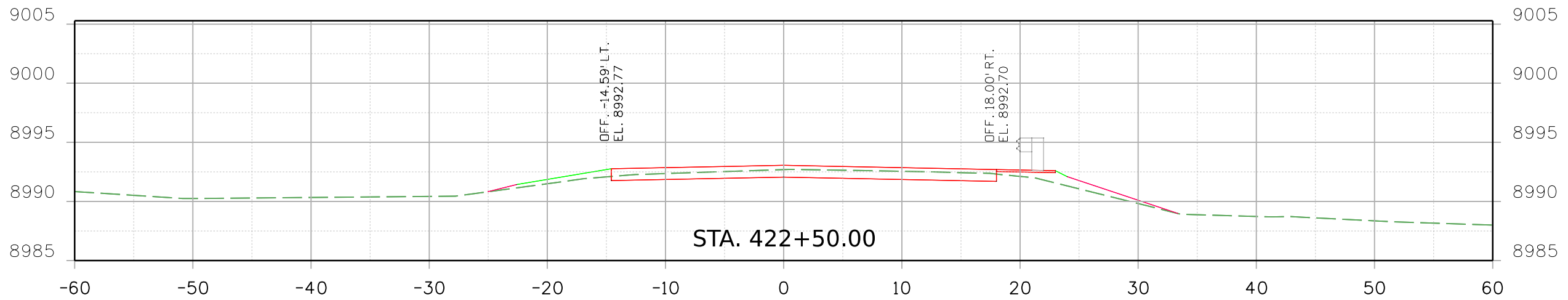
REGION 2 BRIDGE BUNDLE
US 24 OVER SEASONAL WASH
CROSS SECTIONS

Designer: R. HANSON Structure No. I-13-H
Detailer: R. HANSON M.P. US 24 229.468
Sheet Subset: XSEC Subset Sheets: 1 of 8


Project No./Code

Sheet Number

9356 7:24:31 AM p:\1\SC1-PW\INTEG-2.stanleygroup.com\Datasource-1\Documents\Colorado_Department_of_Transportation_of_Transportation\29715 - CDDT R2 Bridge Bundle\11-CADD\Worksets\29175\CDGNs\Design\Sheets\23558DES_US_24_MP_229.468_Xsec.dgn




Print Date: 2/18/2021 File Name:
23558DES_US_24_MP_229.468_Xsec.dgn
Horiz. Scale: Vert. Scale: As Noted



8000 South Chester St.
Suite 500
Centennial, CO 80112
Phone: 303-799-6806

Sheet Revisions		
Date:	Comments	Init.

Colorado Department of Transportation



5615 Wills Blvd
Pueblo, CO 81008
Phone: 719-546-5753
FAX: 719-546-5402

Region 2 JLS

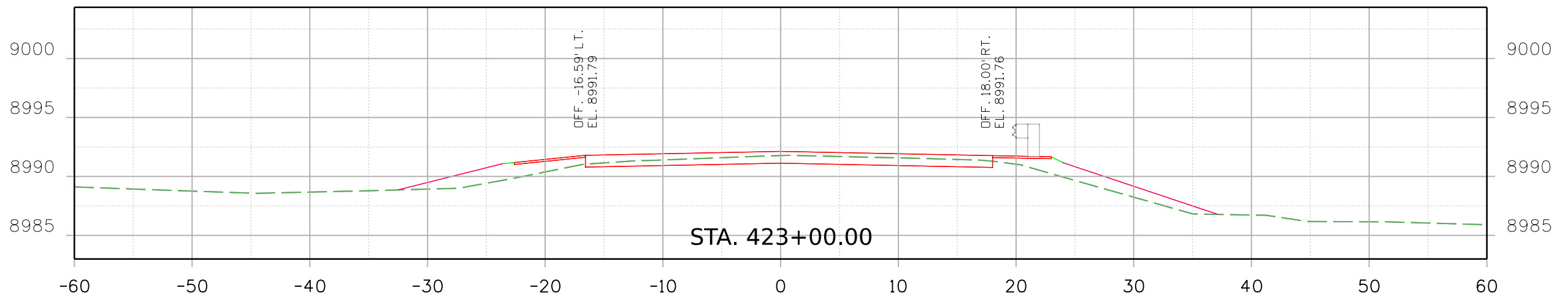
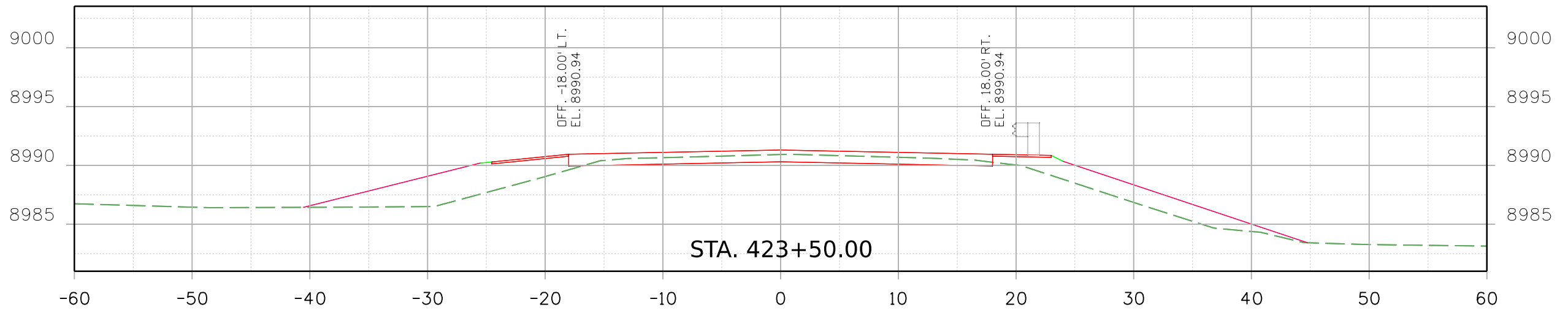
As Constructed
No Revisions:
Revised:
Void:

REGION 2 BRIDGE BUNDLE
US 24 OVER SEASONAL WASH
CROSS SECTIONS

Designer:	R. HANSON	Structure No.	I-13-H
Detailer:	R. HANSON	M.P.	US 24 229.468
Sheet Subset:	XSEC	Subset Sheets:	2 of 8

Project No./Code
Sheet Number

9356 7:24:32 AM pw:\SCI-PW\NTEG-2.stanleygroup.com\Datasource-1\Documents\Colorado_Department_of_Transportation\29715 - CDDT R2 Bridge Bundle\11-CADD\Worksets\29175\DGNS\Design\Sheets\23558DES_US_24_MP_229.468_Xsec.dgn



Print Date: 2/18/2021 File Name:

23558DES_US_24_MP_229.468_Xsec.dgn

Horiz. Scale: Vert. Scale: As Noted



8000 South Chester St.
Suite 500
Centennial, CO 80112
Phone: 303-799-6806

Sheet Revisions

Date:	Comments	Init.

Colorado Department of Transportation



5615 Wills Blvd
Pueblo, CO 81008
Phone: 719-546-5753
FAX: 719-546-5402

Region 2

JLS

As Constructed

No Revisions:

Revised:

Void:

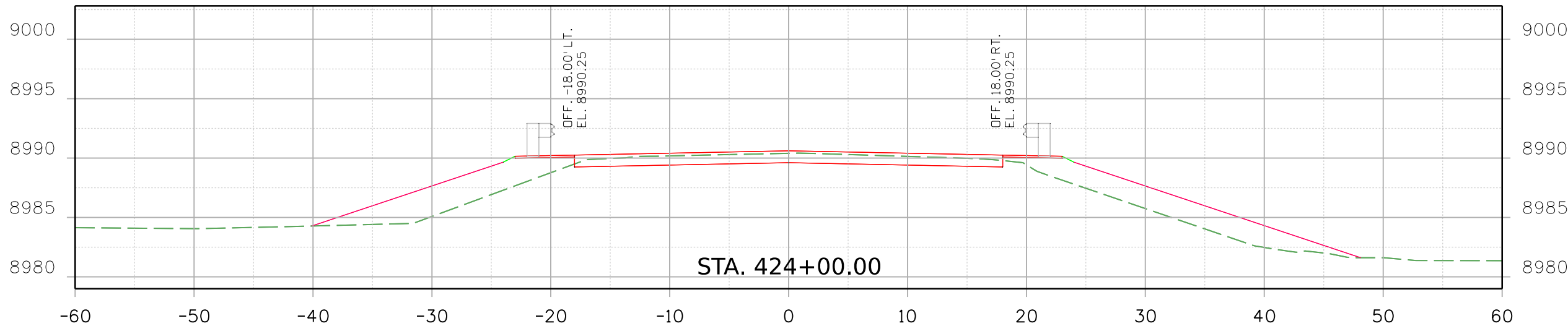
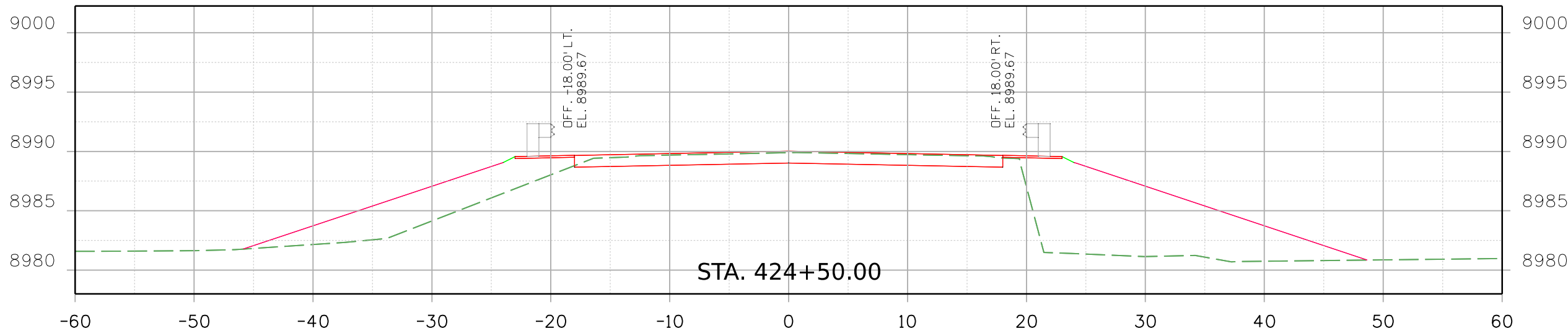
**REGION 2 BRIDGE BUNDLE
US 24 OVER SEASONAL WASH
CROSS SECTIONS**

Designer:	R. HANSON	Structure No.	I-13-H
Detailer:	R. HANSON	M.P.	US 24 229.468
Sheet Subset:	XSEC	Subset Sheets:	3 of 8

Project No./Code

Sheet Number

9356 7:24:33 AM pw:\SCI-PW\NTEG-2.stanleygroup.com\Datasource-1\Documents\Colorado_Department_of_Transportation\29715 - CDDT R2 Bridge Bundle\11-CADD\Worksets\29175\DGNS\Design\Sheets\23558DES_US_24_MP_229.468_Xsec.dgn



Print Date: 2/18/2021 File Name:

23558DES_US_24_MP_229.468_Xsec.dgn

Horiz. Scale: Vert. Scale: As Noted



Stanley Consultants INC.

8000 South Chester St.
Suite 500
Centennial, CO 80112
Phone: 303-799-6806

Sheet Revisions

Date:	Comments	Init.

Colorado Department of Transportation



5615 Wills Blvd
Pueblo, CO 81008
Phone: 719-546-5753
FAX: 719-546-5402

Region 2

JLS

As Constructed

No Revisions:

Revised:

Void:

**REGION 2 BRIDGE BUNDLE
US 24 OVER SEASONAL WASH
CROSS SECTIONS**

Designer: R. HANSON Structure No. I-13-H

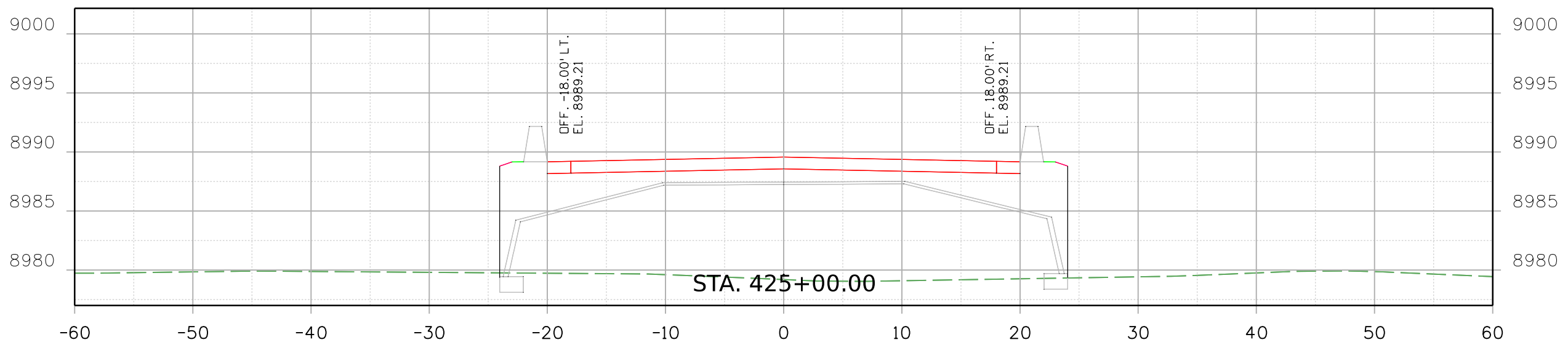
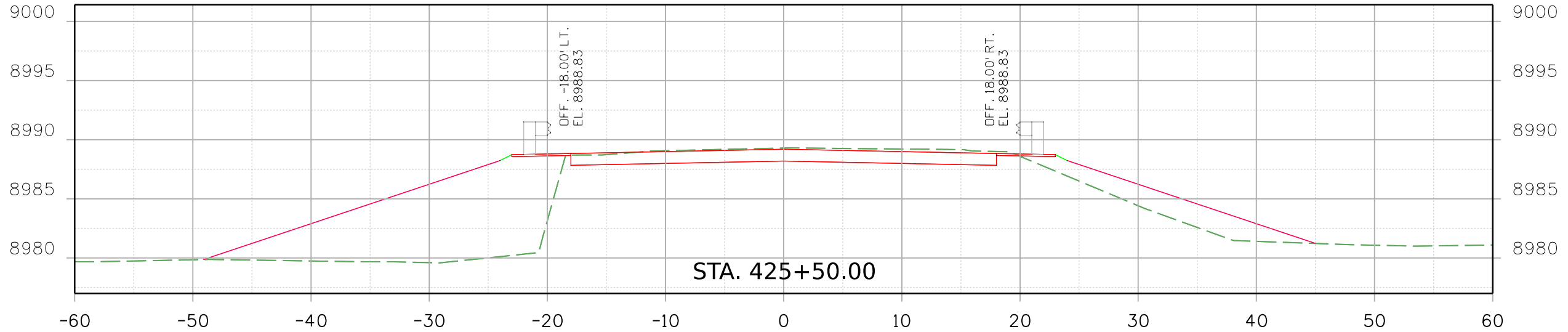
Detailer: R. HANSON M.P. US 24 229.468

Sheet Subset: XSEC Subset Sheets: 4 of 8


Project No./Code

Sheet Number

9356 7:24:33 AM pw:\SCI-PW\NTEG-2.stanleygroup.com\Datasource-1\Documents\Colorado_Department_of_Transportation\29715 - CDDT R2 Bridge Bundle\11-CADD\Worksets\29175\DGNS\Design\Sheets\23558DES_US_24_MP_229.468_Xsec.dgn



Print Date: 2/18/2021 File Name: 23558DES_US_24_MP_229.468_Xsec.dgn
 Horiz. Scale: Vert. Scale: As Noted



8000 South Chester St.
 Suite 500
 Centennial, CO 80112
 Phone: 303-799-6806

Sheet Revisions		
Date:	Comments	Init.

Colorado Department of Transportation



5615 Wills Blvd
 Pueblo, CO 81008
 Phone: 719-546-5753
 FAX: 719-546-5402

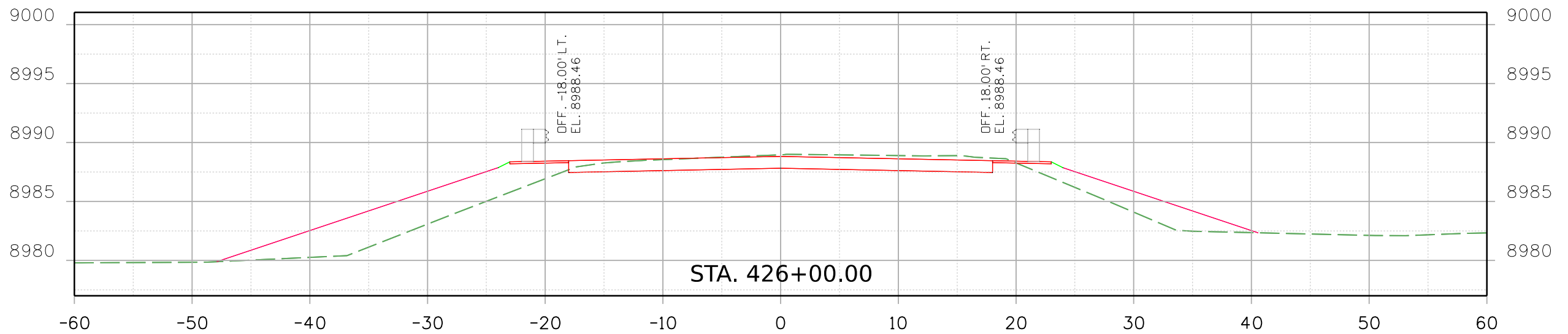
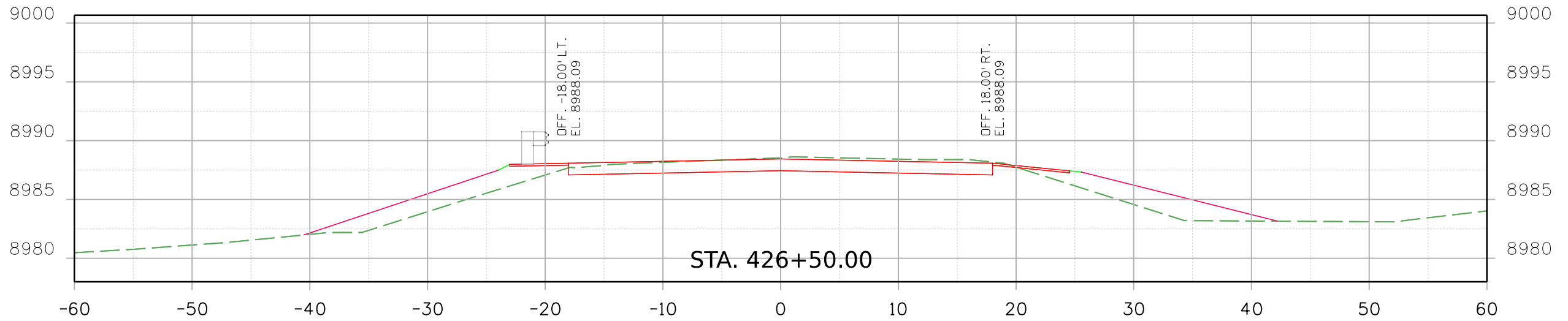
Region 2 JLS

As Constructed
No Revisions:
Revised:
Void:

REGION 2 BRIDGE BUNDLE US 24 OVER SEASONAL WASH CROSS SECTIONS			
Designer:	R. HANSON	Structure No.	I-13-H
Detailer:	R. HANSON	M.P.	US 24 229.468
Sheet Subset:	XSEC	Subset Sheets:	5 of 8

Project No./Code
Sheet Number

9356 7:24:34 AM pw:\SCI-PW\INTEG-2.stanleygroup.com\Datasource-1\Documents\Colorado_Department_of_Transportation\29715 - CDDT R2 Bridge Bundle\11-CADD\Worksheets\29175\DGNS\Design\Sheets\23558DES_US_24_MP_229.468_Xsec.dgn



Print Date: 2/18/2021 File Name:

23558DES_US_24_MP_229.468_Xsec.dgn

Horiz. Scale: Vert. Scale: As Noted



8000 South Chester St.
Suite 500
Centennial, CO 80112
Phone: 303-799-6806

Sheet Revisions

Date:	Comments	Init.

Colorado Department of Transportation



5615 Wills Blvd
Pueblo, CO 81008
Phone: 719-546-5753
FAX: 719-546-5402

Region 2

JLS

As Constructed

No Revisions:

Revised:

Void:

REGION 2 BRIDGE BUNDLE
US 24 OVER SEASONAL WASH
CROSS SECTIONS

Designer: R. HANSON Structure No. I-13-H

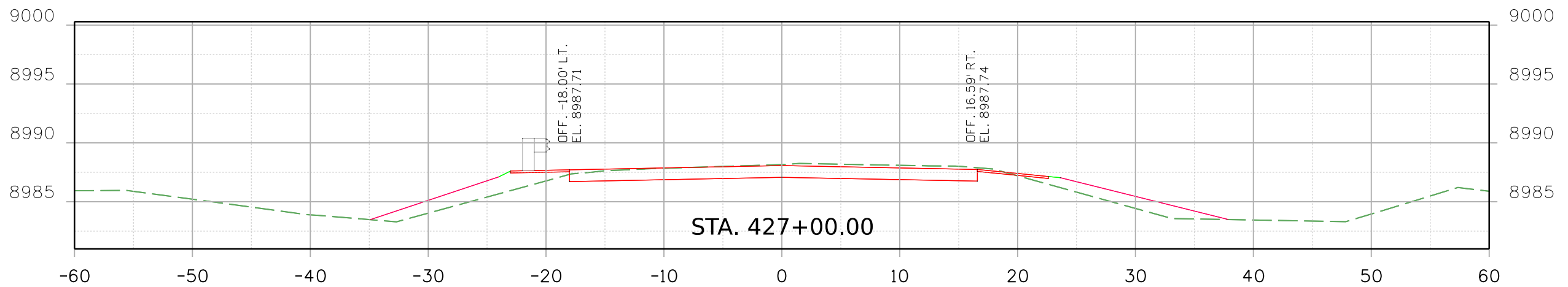
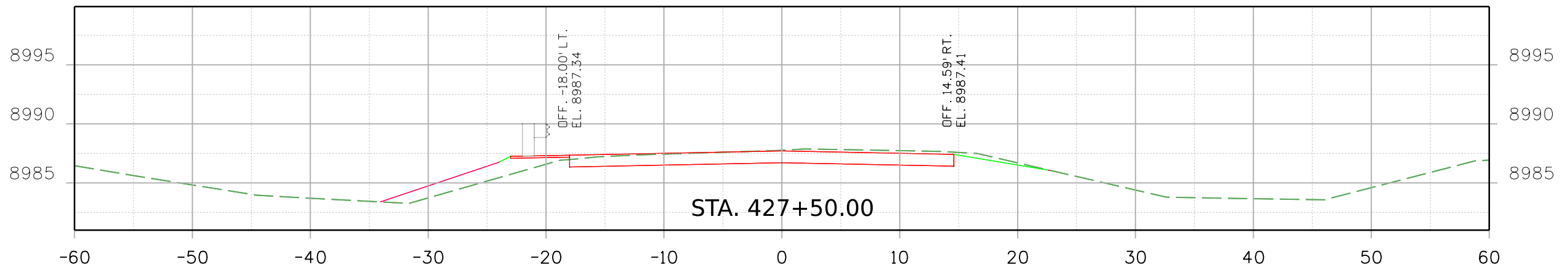
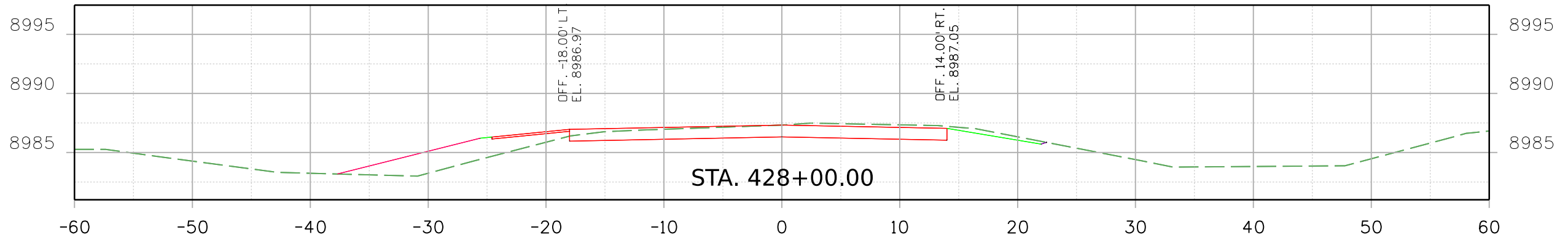
Detailer: R. HANSON M.P. US 24 229.468

Sheet Subset: XSEC Subset Sheets: 6 of 8

Project No./Code

Sheet Number

9356 7:24:35 AM pw:\SCI-PW\NTEG-2.stanleygroup.com\Datasource-1\Documents\Colorado_Department_of_Transportation\29715 - CDDT R2 Bridge Bundle\11-CADD\Worksets\29175\DGNS\Design\Sheets\23558DES_US_24_MP_229.468_Xsec.dgn



Print Date: 2/18/2021 File Name:
23558DES_US_24_MP_229.468_Xsec.dgn
Horiz. Scale: Vert. Scale: As Noted



Sheet Revisions		
Date:	Comments	Init.

Colorado Department of Transportation

5615 Wills Blvd
Pueblo, CO 81008
Phone: 719-546-5753
FAX: 719-546-5402

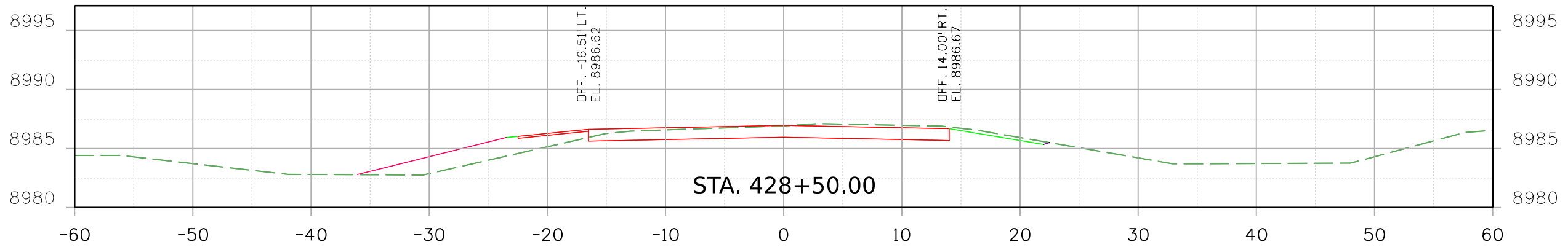
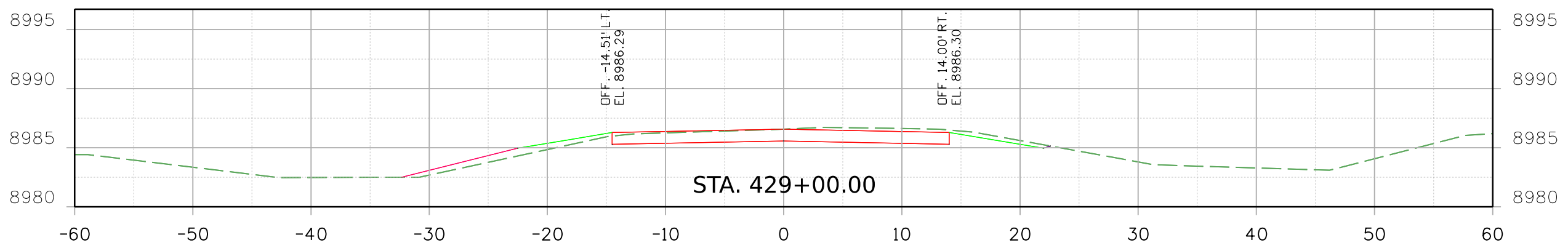
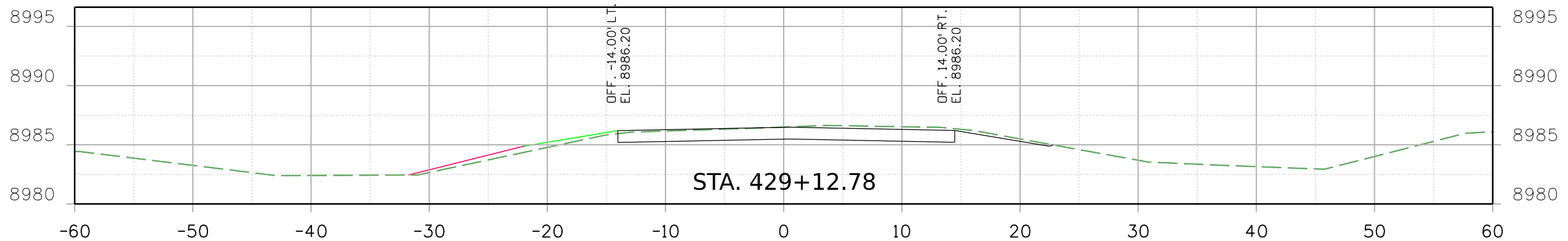
Region 2 JLS

As Constructed
No Revisions:
Revised:
Void:


REGION 2 BRIDGE BUNDLE US 24 OVER SEASONAL WASH CROSS SECTIONS			
Designer:	R. HANSON	Structure No.	I-13-H
Detailer:	R. HANSON	M.P.	US 24 229.468
Sheet Subset:	XSEC	Subset Sheets:	7 of 8

Project No./Code
Sheet Number

9356 7:24:36 AM pw:\SCI-PW\INTEG-2.stonygroup.com\Datasource-1\Documents\Colorado_Department_of_Transportation\29715 - CDDT R2 Bridge Bundle\11-CADD\Worksets\29175\DGNS\Design\Sheets\23558DES_US 24 MP 229.468_Xsec.dgn




Print Date: 2/18/2021 File Name:
 23558DES_US 24 MP 229.468_Xsec.dgn
 Horiz. Scale: Vert. Scale: As Noted

 **Stanley Consultants** INC.
 8000 South Chester St.
 Suite 500
 Centennial, CO 80112
 Phone: 303-799-6806

Sheet Revisions		
Date:	Comments	Init.

Colorado Department of Transportation

 5615 Wills Blvd
 Pueblo, CO 81008
 Phone: 719-546-5753
 FAX: 719-546-5402

Region 2 JLS

As Constructed
No Revisions:
Revised:
Void:

REGION 2 BRIDGE BUNDLE US 24 OVER SEASONAL WASH CROSS SECTIONS			
Designer:	R. HANSON	Structure No.	I-13-H
Detailer:	R. HANSON	M.P.	US 24 229.468
Sheet Subset:	XSEC	Subset Sheets:	8 of 8

Project No./Code
Sheet Number