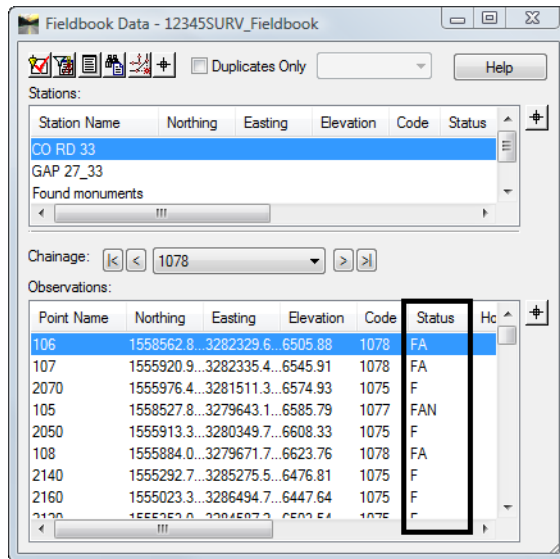


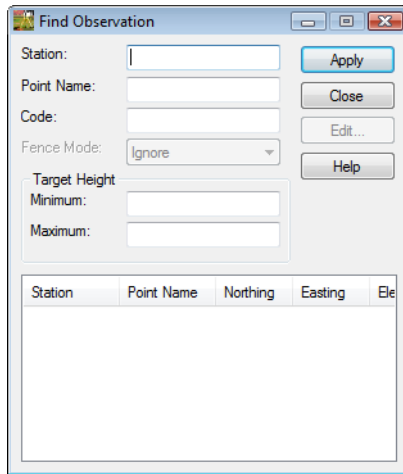
Chapter 7 - Fieldbook Edits

Fieldbook Data dialog



- Status Codes
 - ◆ N – The point has a Note
 - ◆ E – The point has been Edited
 - ◆ F – The point is Fixed or has been keyed in
 - ◆ A – The point has an Attribute associated to the Survey Feature
 - ◆ V- The point has a Value for an associated Attribute
 - ◆ I – The point has been Inserted into the fieldbook
 - ◆ C – The point has been adjusted

Find Observation dialog



Dialog items:

- **Station** – key-in field used to locate Station point numbers in the active fieldbook.
- **Point Name** - key-in field used to locate Observation point numbers in the active fieldbook.
- **Code** - key-in field used to locate Alpha or Numeric codes in the active fieldbook.
- **Fence Mode** – used to constrain a lookup area. If a fence is placed in the design file then the item will be activated so fence mode is selectable.
- **Target Height** – locates survey shots based on a target height range
 - ◆ **Minimum**
 - ◆ **Maximum**
- **List** – points found based on the selection criteria.
 - ◆ Use the Shift and Ctrl keys to select multiple points in the list.
- **Apply** – locates the points in the active fieldbook and places them in the list section.
- **Edit** – opens the **Edit Observation** dialog for the selected point numbers.

Note: Standard wild cards such as the asterisk “*” and question mark “?” can be used in the Station, Point Name, and Code key in fields. Value ranges can also be defined in the Point Name key in field by using a dash and brackets.

Edit Observation dialog

When editing points in the electronic fieldbook the original raw imported data is *not* edited. The **Edit Observation** dialog allows the fields that are not grayed out to be edited. After the point has been edited the point will show an “E” in the Status column of the fieldbook. Edits will also be tracked in the Audit Trail file.

Attributes:		
Code	Name	Value
4375	ROT	

Dialog items:

- **Point Name** – assigned point value in the fieldbook.
 - ◆ Use the arrows to easily cycle through the points.
- **Type** – definition of the point in the fieldbook
 - ◆ **Computed** – point is defined from measured distances and angles.
 - ◆ **Fixed** – point is based on a set of coordinates fixed by key-in or by an absolute observation (GPS).
 - ◆ **Geometry** – point is defined in the Cogo buffer.
- **Horizontal Observation** – measured value
- **Vertical Observation** – measured value
- **Slope Distance** - measured value
- **Code** – feature and control codes
- **Target Height** - prism height above measured point
- **Notes** – any notes added to the shots in the field
- **Northing, Easting, Elevation** - point values for point
- **Attributes** – any additional information collected for the point

