

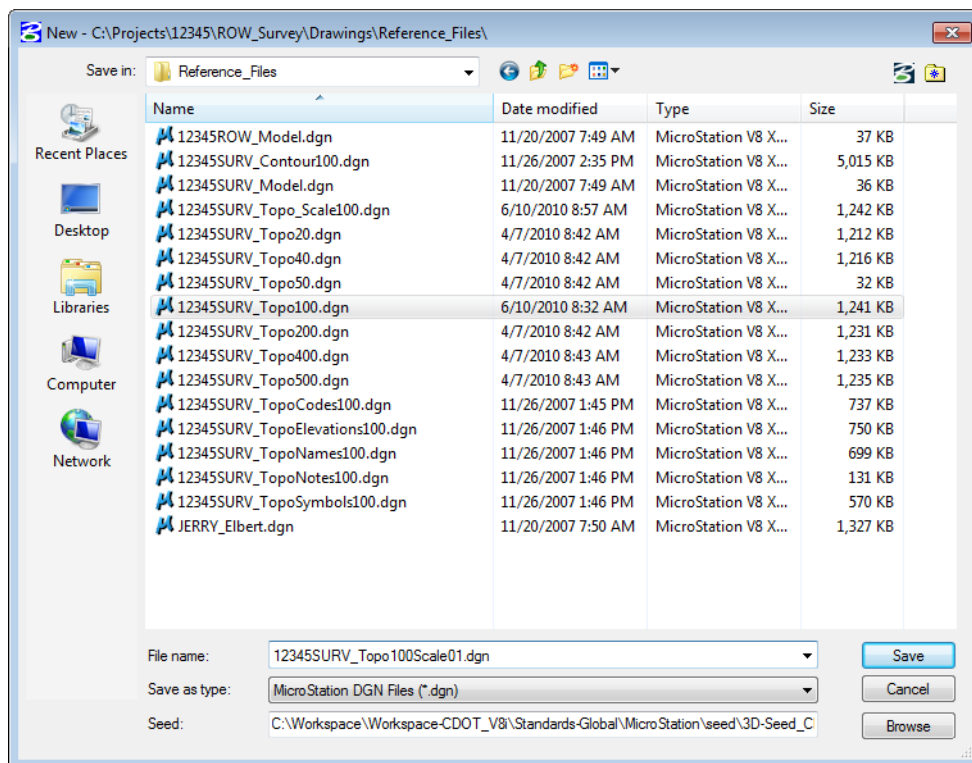
Workflow IR 12 - Exporting Fieldbook Files

This document guides you through saving survey fieldbook information to separate MicroStation files for ease of referencing and level control.


Exporting a Fieldbook File

Creating a new file

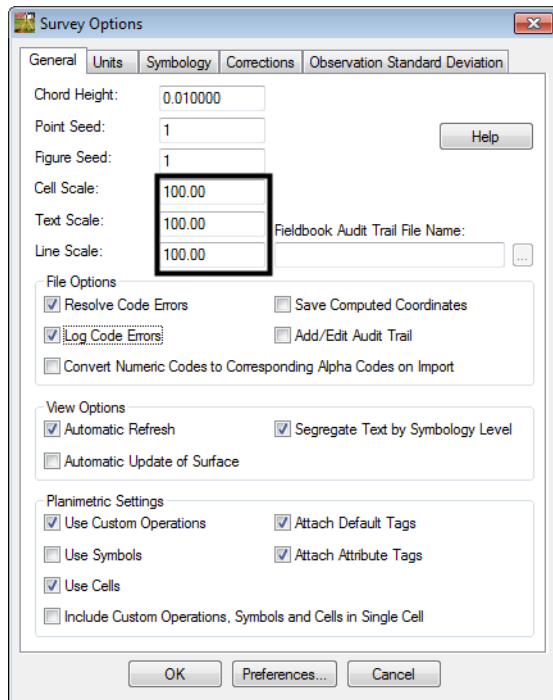
1. From the MicroStation pull-down menu select **File > New**. The New dialog will appear.
2. *Navigate* to the project directory folder **ROW_Survey\Drawings\Reference_Files**.
3. At the bottom of the dialog box verify that the seed file is set to **3D-Seed_CDOT.dgn**.



Note: If **3D-Seed_CDOT.dgn** is not the seed file specified, <D> Select button and chose navigate to **C:\Program Files\Workspace-CDOT\Standards-Global\MicroStation\seed** and select **3D-Seed_CDOT.dgn** from the Select a Seed File dialog box.

4. Key in the name of the file to be created in the Files filed: **12345SURV_Topo100Scale01.dgn**
5. <D> OK in the New dialog. The New dialog will close and the file **12345SURV_Topo100scale01.dgn** will open.
6. Disable the view display of dynamic survey graphics shown on the screen. Toggle off the View Planimetrics icon  or any other symbols, names, codes, etc. that may be enabled, using the toggles in the **View Survey Data** toolbar.

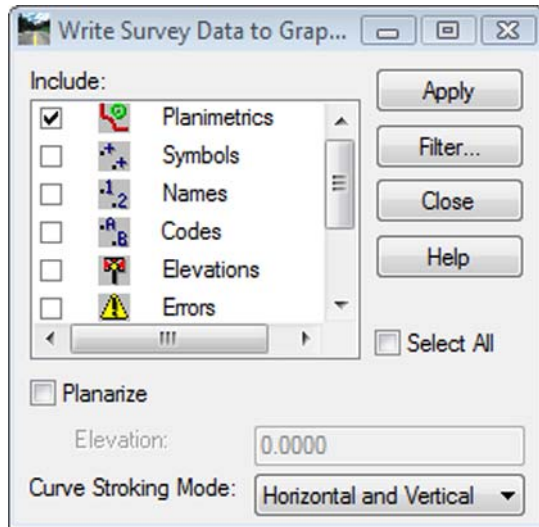
7. Verify the correct fieldbook is active. The active fieldbook is indicated by a red box around the fieldbook icon in the InRoads workspace pane.
8. To modify the scale as it relates to cells, text, and linestyles select **Tools > Survey Options**. The **Survey Options** dialog will appear.
9. On the **General** tab verify the Scales for **Cell**, **Text**, and **Line** are set as shown below.
10. Verify the check box labeled **Segregate Text by Feature Level** is checked on.



Note: Segregate Text by Feature Level, if checked on, will save the symbols, point names, codes, notes, errors, and elevations to the same level as the survey feature.

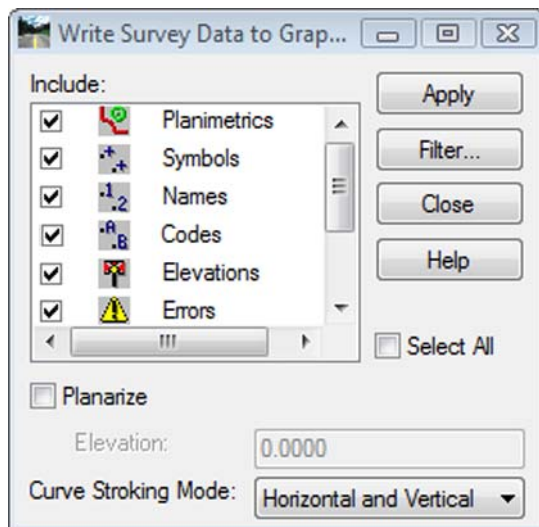
11. <D> OK. The **Survey Options** dialog will close.

12. Once the settings have been verified or changed, write the survey data to graphics. From the InRoads menu select **Survey > View Survey Data > Write Survey Data to Graphic**. The **Write Survey Data to Graphics** dialog will open.



Note: If dynamic graphics were toggled on, those same components would be toggled on in the **Write Survey Data to Graphics** dialog.

13. Check the **Select All** check box.



14. Set **Curve Stroking Mode** to **Horizontal Only**.
15. <D> **Apply**. The graphics will be created in the design file.
16. <D> **Close**. The Survey fieldbook data has been written to the design file.

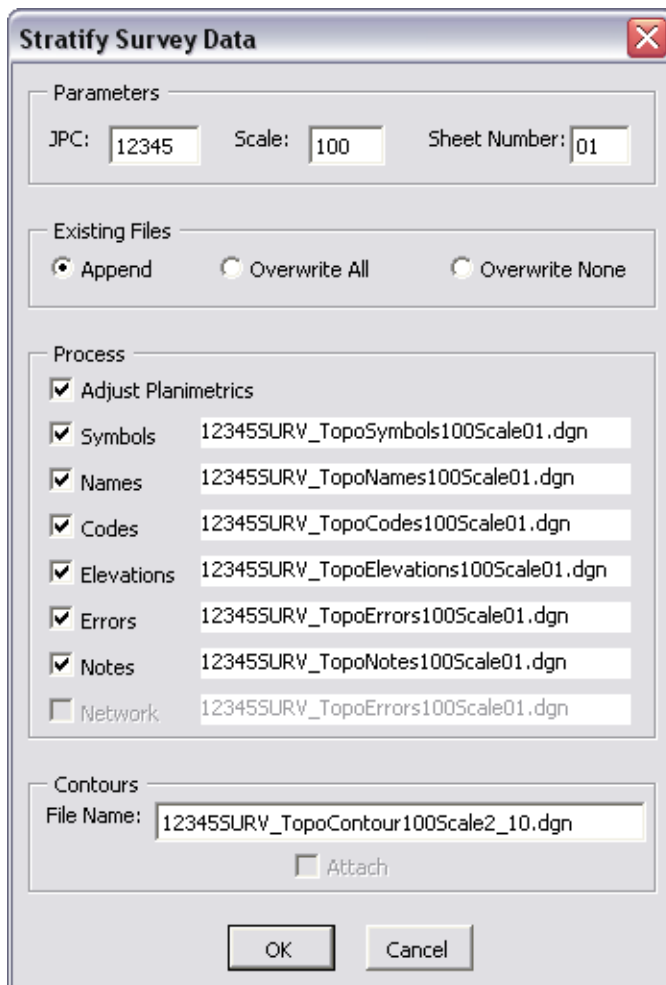
17. Verify all dynamic View Survey Data icons are toggled off.



18. Fit the view of the contents of the design file within MicroStation.

19. Review the results to verify the data has been written to the design file and are level stratified.

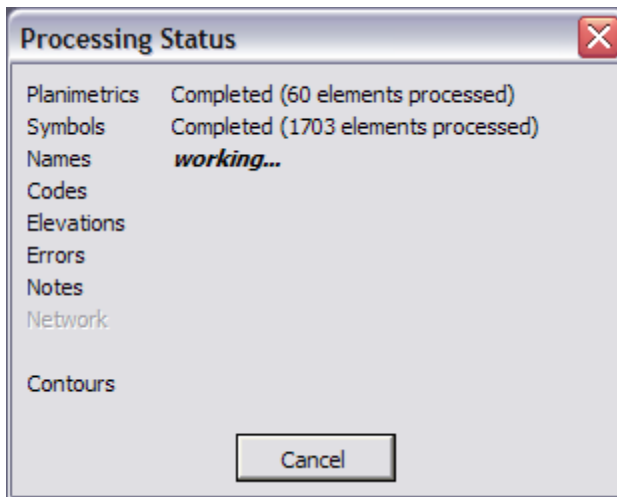
20. From the CDOT Menu pull-down select **Add On's > Stratify Survey**. The **Stratify Survey** dialog will appear.



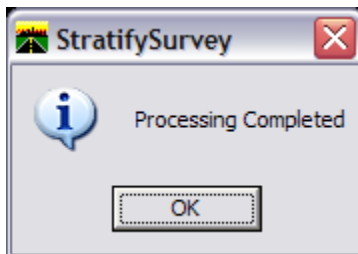
Note:

- ◆ Under *Existing Files*, the *Append* option will add or merge the new data into an existing file. A new file will be created if the file does not already exist.
- ◆ Under *Existing Files*, the *Overwrite All* option will create a new file, deleting any previously existing file.
- ◆ Under *Existing Files*, the *Overwrite None* option will disable the processing option for a file if the file already exists.

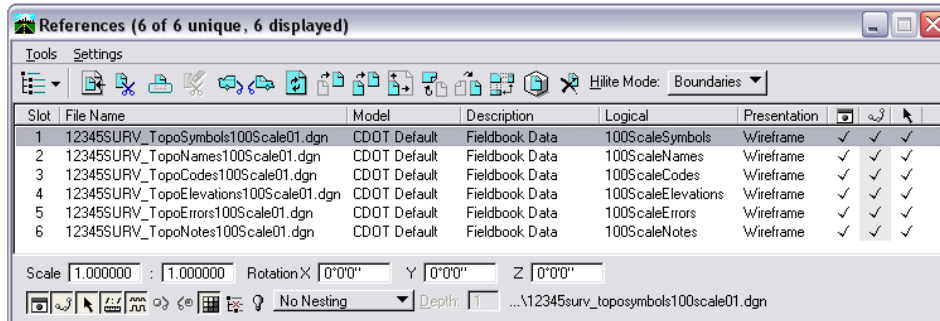
- ◆ The **Process** option **Adjust Planimetrics** will resize the planimetrics text (if necessary) and convert the grouped text strings to view independent cells in order to allow for viewing this text in any 3D view.
21. Verify the **JPC**, **Scale**, and **Sheet Number** entries are correct. Altering any of those values will automatically alter the output file names. If the **Attach** check box in the Contours section is grayed out, the contour file does not exist. You may edit the name specified in the **File Name** field to enter the name of an existing contour file.
 22. <D> **OK** button to start the process.
 23. As the data is being moved to the appropriate reference file a **Processing Status** dialog provides an update on the progress. You may <D> **Cancel** at any time to stop the processing, if necessary.



24. When completed, a **Processing Completed** message is displayed. <D> **OK** to exit the program.

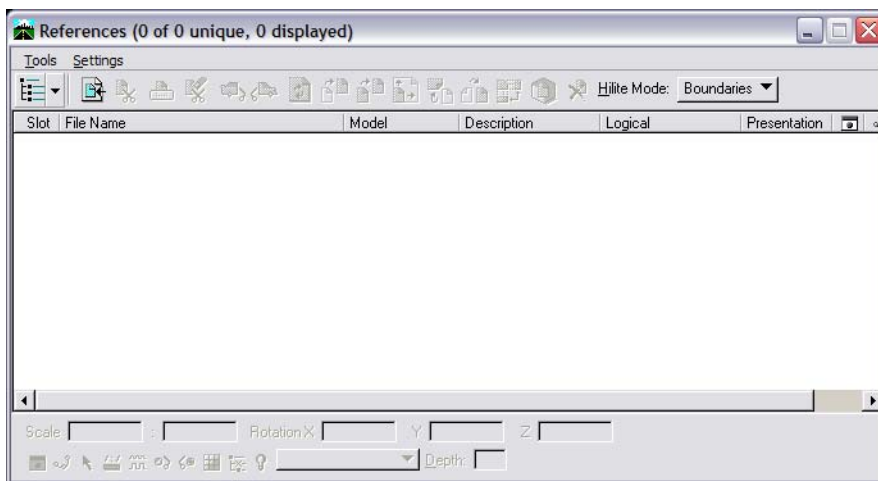


25. The fieldbook data has now been stratified into separate reference files. The planimetrics will be in the master design file with all of the symbols, names, codes, etc., attached as reference files. To view these attachments select **File > Reference** from the MicroStation pull-down menu.

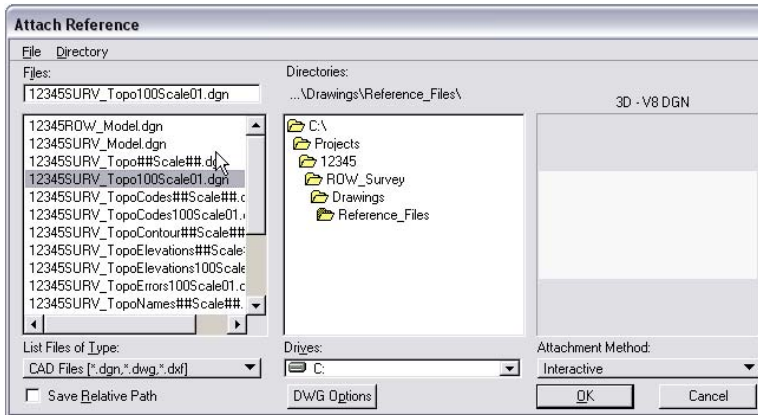


Roadway Design referencing Survey Topo files

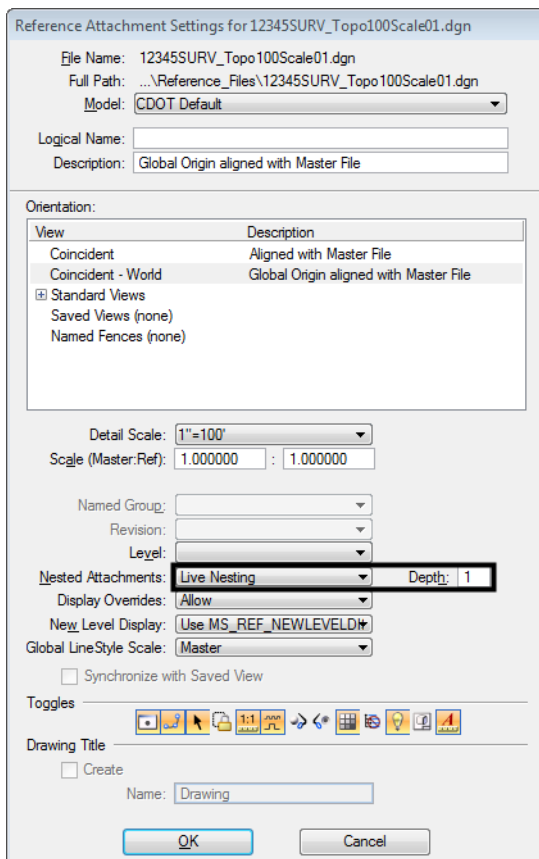
1. By using nested references, the designers can attach one Survey Topo file and have all the additional references attach as well.
2. From the MicroStation pull-down menu select **File > Reference**. The References dialog will appear.



- From the References pull down menu select Tools > Attach. The Attach Reference dialog will appear.



- Set the directory to C:\Projects\12345\ROW_Survey\Drawings\Reference_Files
- Select the file *12345SURV_Topo100Scale01.dgn* and <D> OK. The Reference Attachment Settings dialog will appear.
- From the Nested Attachments drop down list, select *Live Nesting* and set the Depth to *1*.



- 7. <D> OK. The Survey Topo file will attach along with the fieldbook nested attachments.

