

Workflow IR 15 - Tabling Horizontal Geometry Annotation

This document describes the Tabling function within the Horizontal Geometry Annotation command. Tabling can be used on plan sheets where there is not room to place the annotation along the alignment. The tabled data is displayed in an InRoads report. It is copied from this report into an Excel spreadsheet, formatted, then pasted into the MicroStation file.

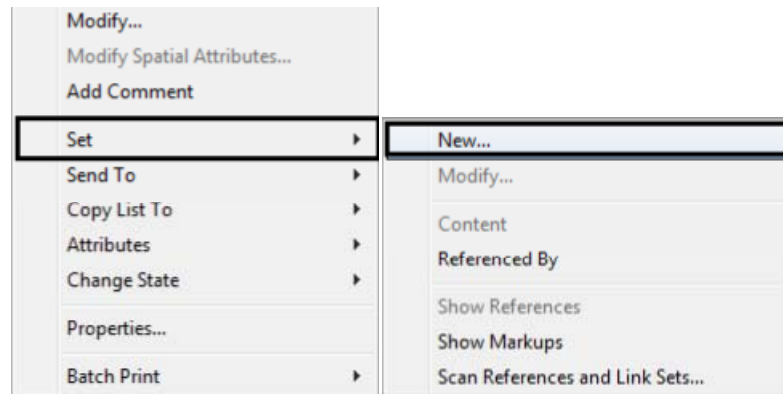
This workflow assumes that InRoads is active and the geometry project is loaded.

Preparing an Excel Spreadsheet

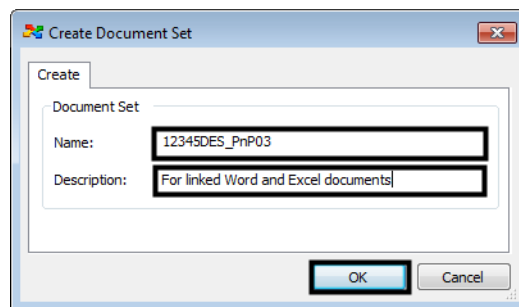
1. Create a new Excel spreadsheet. Name the spreadsheet #####DES_Geometry-Table.xls. In this example 12345DES_Geometry-Table.xls is used.
2. Post the file to ProjectWise in the .../Design/Drawings/Tabs folder.
3. Close Excel.

Creating a Document Set

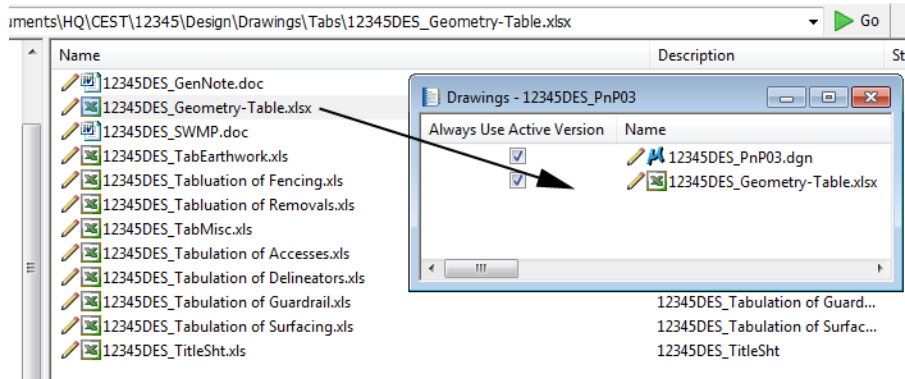
4. In the ProjectWise Explorer select the folder where the parent drawing is located.
5. Right-click on the parent drawing file and select **Set > New** from the right click menu. This displays the *Create Document Set* dialog box.



6. Enter the name of the MicroStation file used as the parent for the **Name:** and key in a **Description:**
7. <D> **OK**. The document set dialog box is displayed with the parent drawing listed in the window.



- Next, **Drag and drop** the Excel file into the document set window.

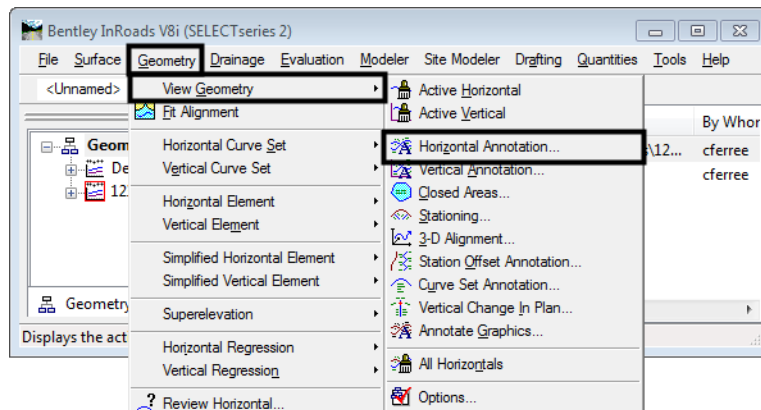


Note: Although documents can be added to the Document Set from any folder within the active ProjectWise datasource, ideally they should be added from folders within the same project.

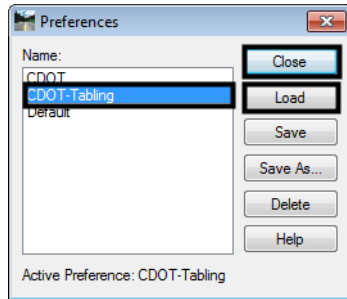
- Once the spreadsheet is added to the document set, <D><D> on the spreadsheet in the document set dialog box to open the file.

Dialog Box Settings for the View Horizontal Annotation Command

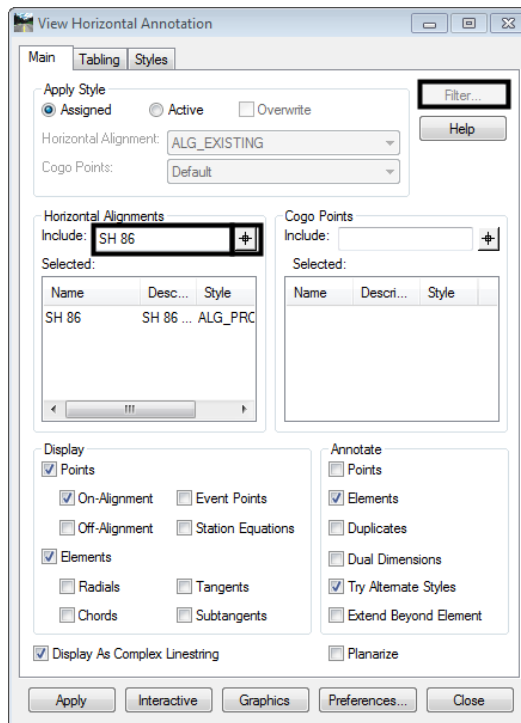
- From the InRoads main menu, select **Geometry > View Geometry > Horizontal Annotation**. The *View Horizontal Annotation* dialog box is displayed.



- In the *Main* tab of the *View Horizontal Annotation* dialog box, <D> the **Preferences** button. This displays the *Preferences* dialog box.
- In the *Preferences* dialog box, highlight the **CDOT-Tabling** preference.
- <D> **Load** then **Close** to load the preference and dismiss the *Preferences* dialog box.

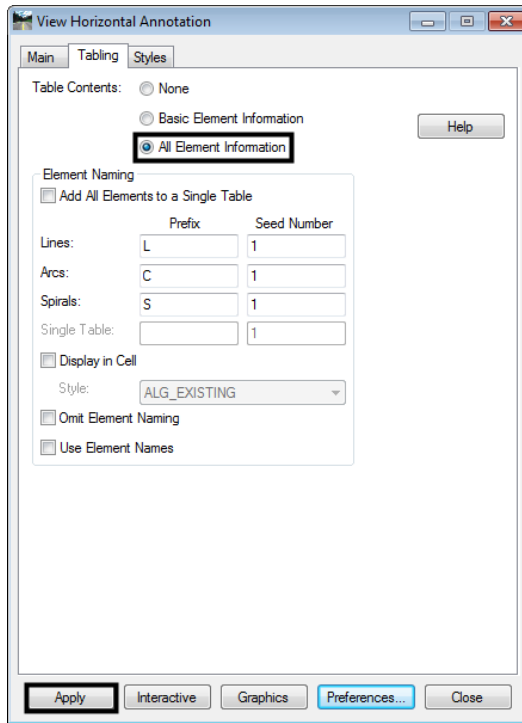


14. The **Main** tab of the **View Horizontal Annotation** dialog box, <D> in the **Include** field of the **Horizontal Alignments** area.
15. Key in the alignment name, select it graphically, or use the **Filter** button to select the desired alignment to annotate.

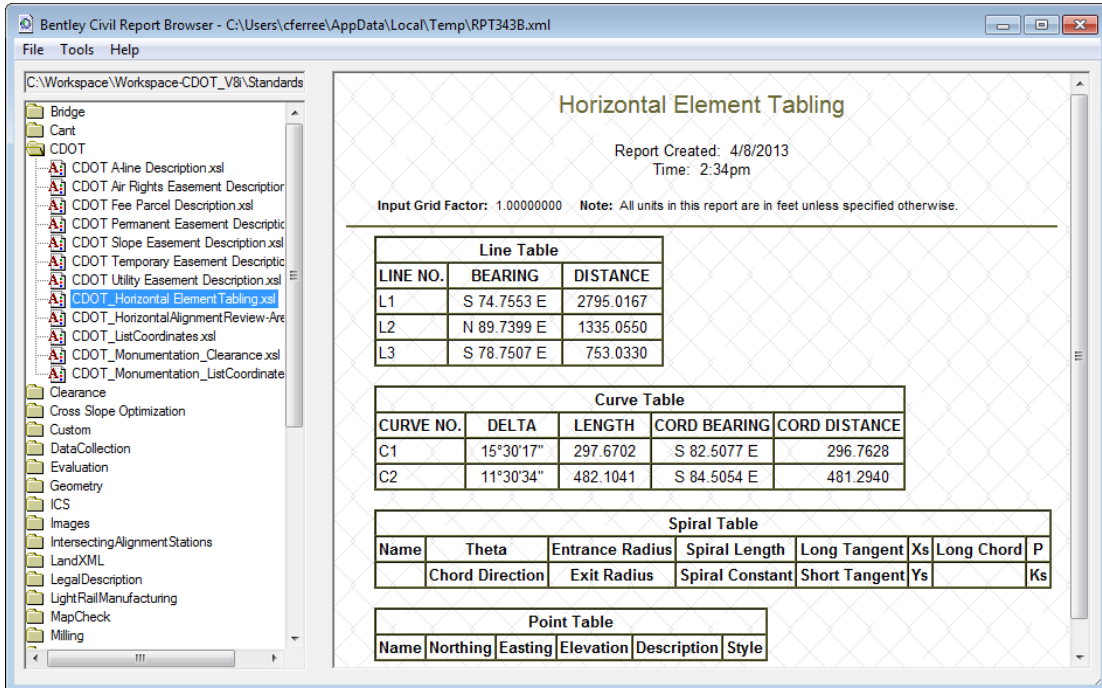


16. <D> the **Tabling** tab.
17. On the **Tabling** tab, toggle on **All Element Information**.

18. <D> the **Apply** button. This displays the *Bentley Civil Report Browser* which contains the tables of the geometry elements.



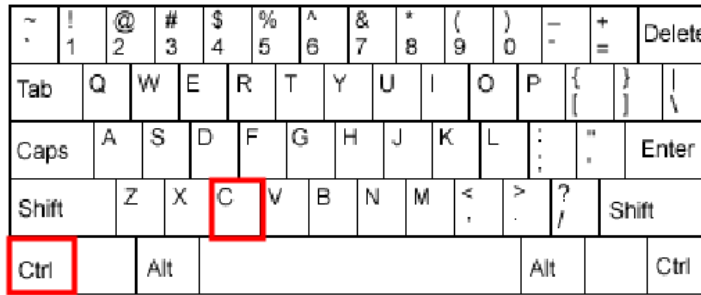
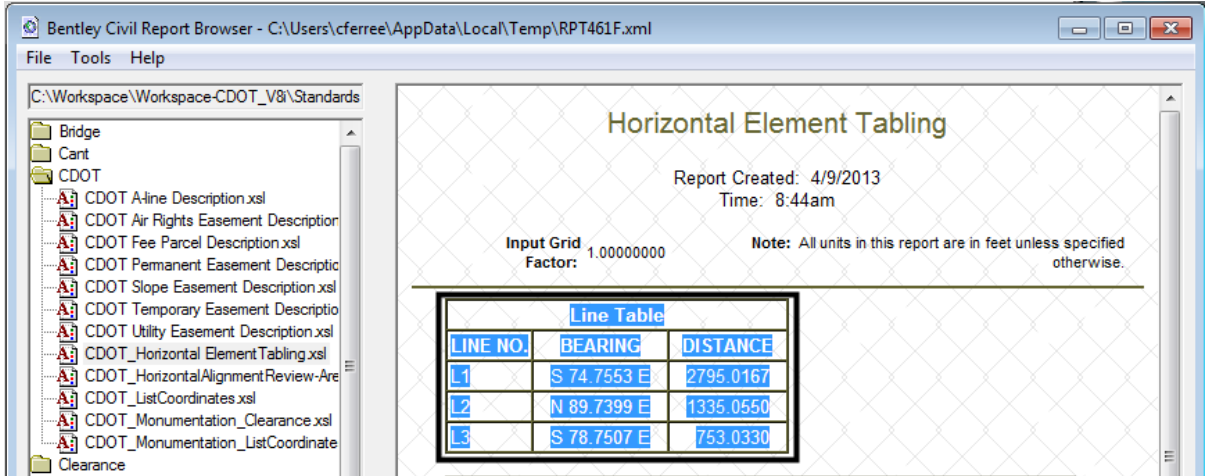
The illustration below shows the *Bentley Civil Report Browser*.



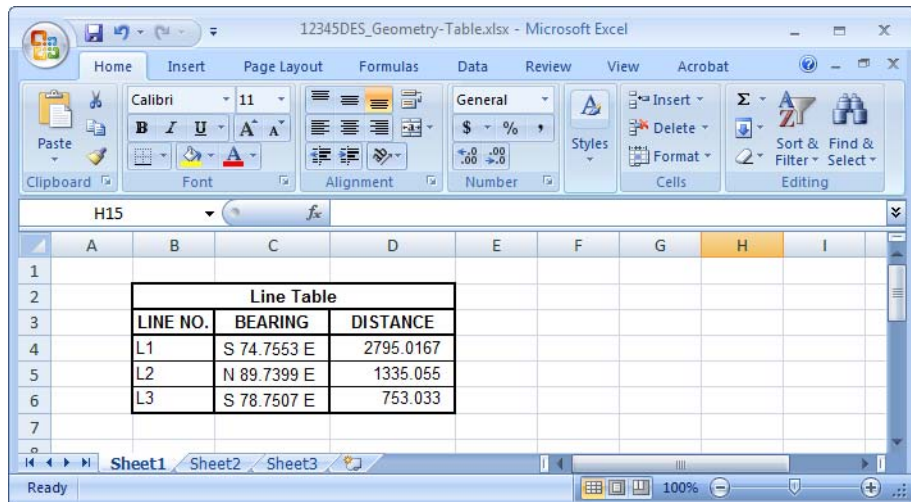
Moving the Data to an Excel Spreadsheet

The data from the Bentley Civil Report Browser is now copied into Excel. Once in Excel, the tables can be formatted.

19. In the *Bentley Civil Report Browser*, Highlight the *Line Table*.
20. Press **Ctrl C** on the keyboard to copy the highlighted data to the clipboard.



21. Paste the copy into the Excel file (12345DES_Geometry-Table.xls in this example).

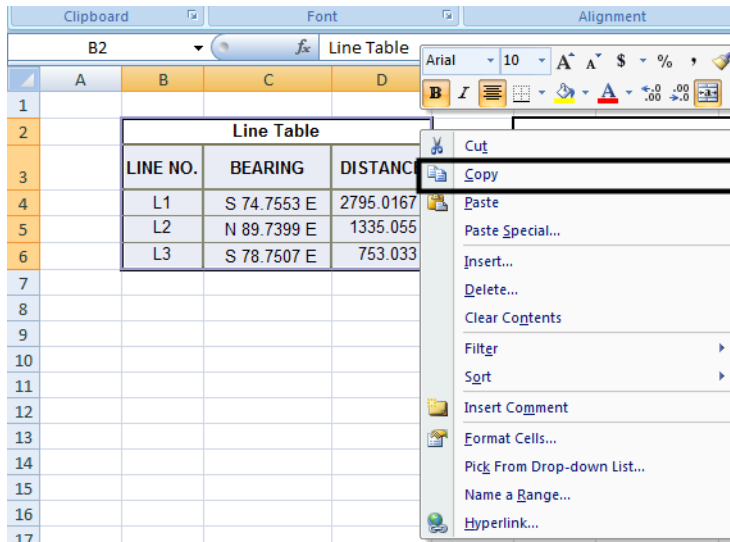


- Repeat steps 19 through 21 for the other tables in the report browser that are needed.

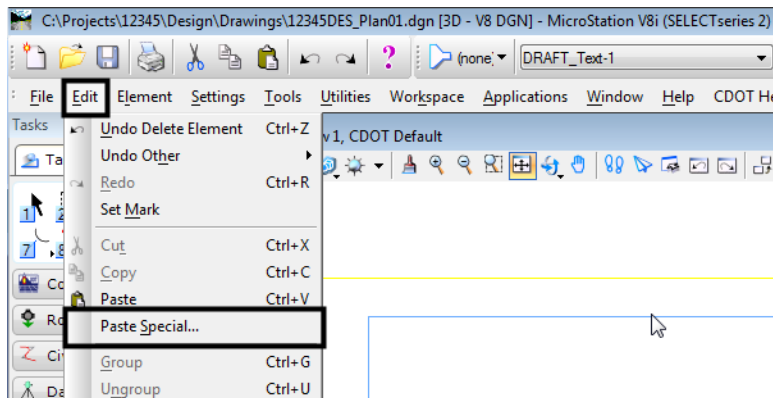
Note: The Arial font with a 10 pt size should be used as the default Font in Microsoft Excel documents. This size is best for readability and reproductability.

Linking Excel Documents to MicroStation

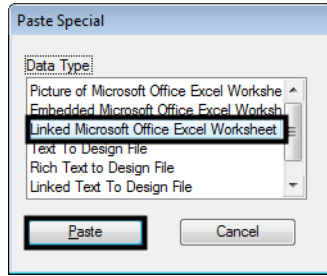
- Within the Excel file, highlight the table to be placed in the MicroStation Sheet file.
- <R> and select **Copy** from the right click menu (Ctrl+C will also work).



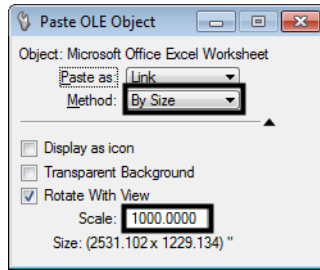
- Within the MicroStation file, select **Edit > Paste Special** from the MicroStation menu. The *Paste Special* dialog box is displayed.



- In the **Paste Special** dialog box, <D> **Linked Microsoft Office Excel Worksheet** and <D> **Paste**. This displays the **Paste OLE** dialog box.

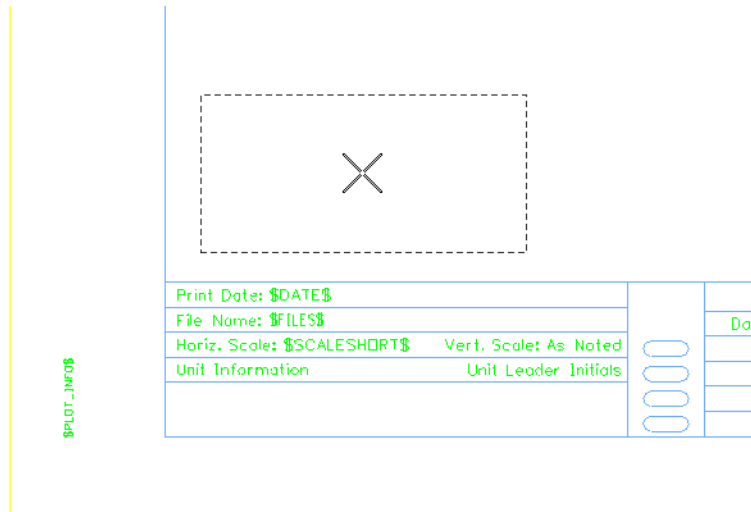


- In the **Paste OLE** dialog box, Set the **Method** to **By Size** and set the **Scale** to **1000**.



Note: The Scale to place the link at should be 10 times *the Annotation Scale* of the MicroStation file.

- A dashed line attached to the cursor show the size of the item being placed. Move the item to the desired location and then <D> to place it.



For more information about placing linked Excel data into MicroStation, see **CDOT Workflow OP 2 - Linking Excel Documents to MicroStation**.