

Workflow MA 5 - Consultant Workspace

This document describes the setup of the CDOT Workspace if it is to reside on a server.

1. Read the CDOT MicroStation/InRoads Configuration requirements and installation instructions. This information is found at the following link on the CDOT website:

<http://www.coloradodot.info/business/designsupport/cadd/microstation-inroads-configuration>

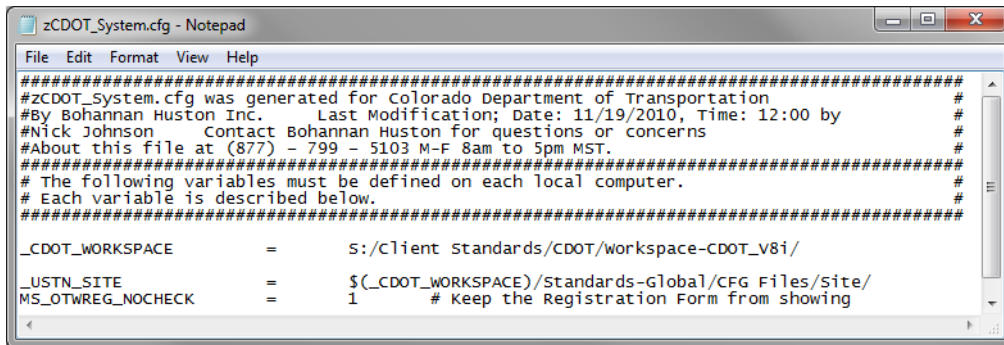
2. This will place the workspace on the server at the specified location.

Note: In the examples below, the following server location is used. “S:\Client Standards\CDOT\”

3. Open and review the CDOT Configuration ReadMe file. It is located in S:\Client Standards\CDOT\Workspace-CDOT_V8i\CDOT Notes.
4. Follow step 8 on the installation instructions to activate the server based workspace for MicroStation and InRoads. For MicroStation and InRoads, edit the following file:

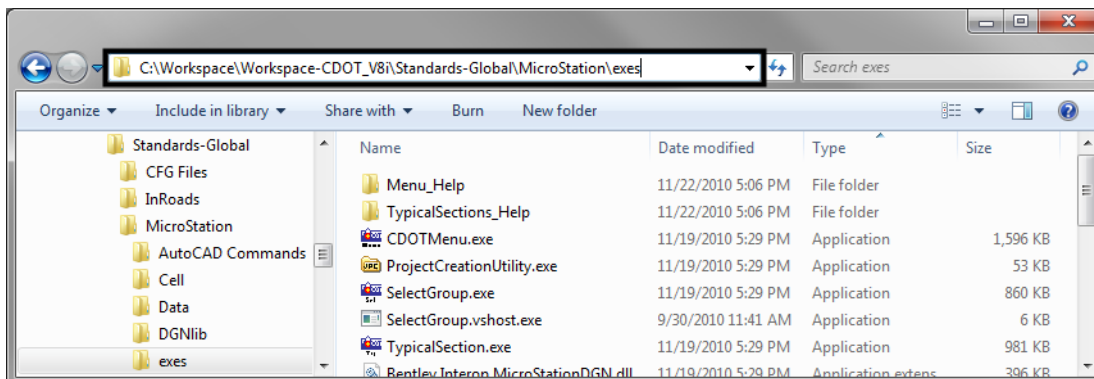
For 64-bit operating systems, C:\Program Files (x86)\MicroStation V8i (SELECTseries)\MicroStation\config\system\zCDOT_System.cfg

For 32-bit operating systems, C:\Program Files\MicroStation V8i (SELECTseries)\MicroStation\config\system\zCDOT_System.cfg

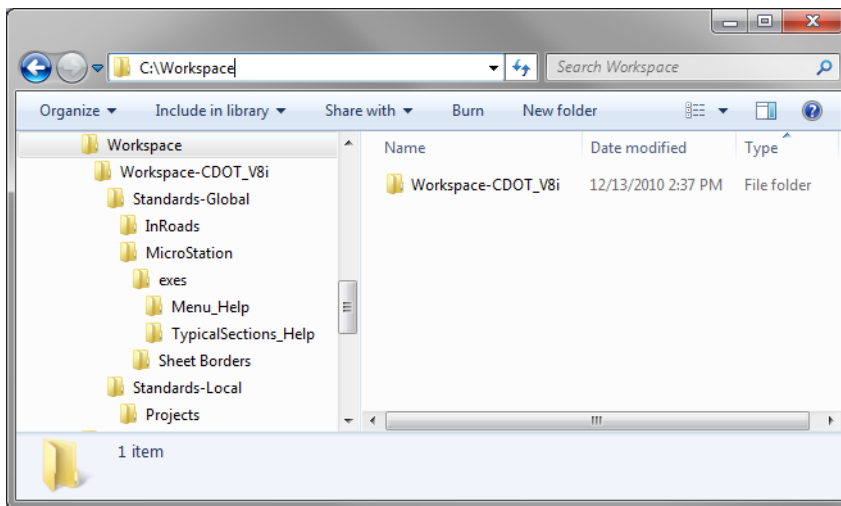


```
zCDOT_System.cfg - Notepad
File Edit Format View Help
#####
#zCDOT_System.cfg was generated for Colorado Department of Transportation #
#By Bohannan Huston Inc. Last Modification; Date: 11/19/2010, Time: 12:00 by #
#Nick Johnson Contact Bohannan Huston for questions or concerns #
#About this file at (877) - 799 - 5103 M-F 8am to 5pm MST. #
#####
# The following variables must be defined on each local computer. #
# Each variable is described below. #
#####
_CDOT_WORKSPACE = S:/Client Standards/CDOT/workspace-CDOT_V8i/
_USTN_SITE = ${_CDOT_WORKSPACE}/Standards-Global/CFG Files/site/
MS_OTWREG_NOCHECK = 1 # Keep the Registration Form from showing
```

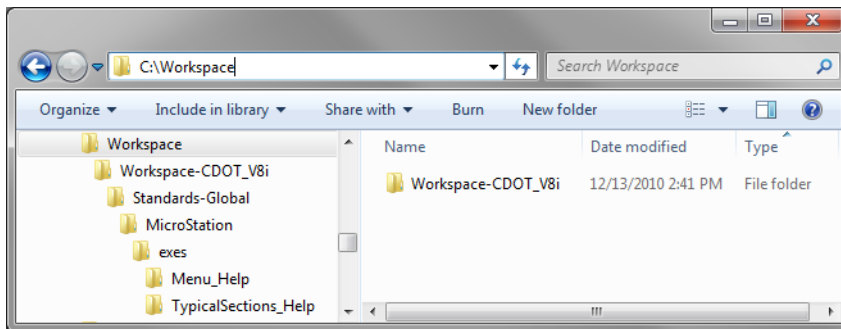
5. The exe folder in the configuration must be copied onto the user’s computer in order for the programs to function properly. The exes folder should be placed in the following location: C:\Workspace\Workspace-CDOT_V8i\Standards-Global\MicroStation\. This is required because the custom extensions are built on .NET framework and there are Windows securities that forbid running them on a server.



6. For those using the **CreatePrjDir.exe**, the following workspace folders (and their data) must be copied to the **C:\Workspace** directory:
 - ◆ **Workspace-CDOT_V8i\Standards-Local\Projects**
 - ◆ **Workspace-CDOT_V8i\Standards-Global\InRoads\Preferences**
 - ◆ **Workspace-CDOT_V8i\Standards-Global\MicroStation\Sheet Borders**
7. The pcf file created by the **CreatePrjDir.exe** program will be placed in the following location on the computer used to run the program:
 - ◆ **C:\Workspace\Workspace-CDOT_V8i\Standards-Local\Projects**
8. This pcf file should be copied to the **S:\Client Standards\CDOT\Workspace-CDOT_V8i\Standards-Local\Projects**. All users accessing this project will use the pcf file located on the server because the MicroStation configuration variables point to this directory.
9. Below is an example of the folder structure required on the local drive for those using the **CreatePrjDir.exe**:



10. The folder structure required on the local drive for those not using the **CreatePrjDir.exe** is:



11. These folders and files do not control the resources used by the program.
12. Follow step 14 on the installation instructions to deactivate the workspaces.