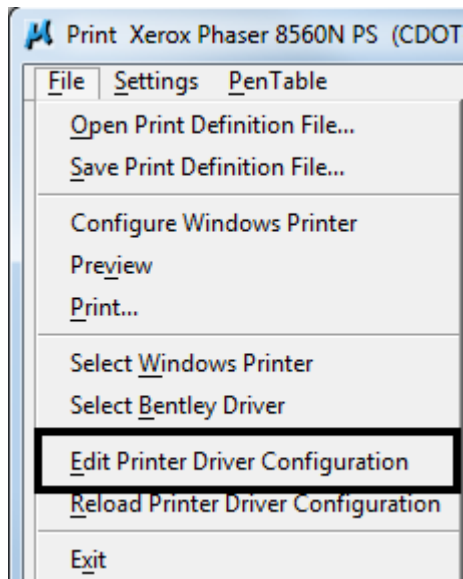


# Workflow MP 2 - Printer Driver Adjustments

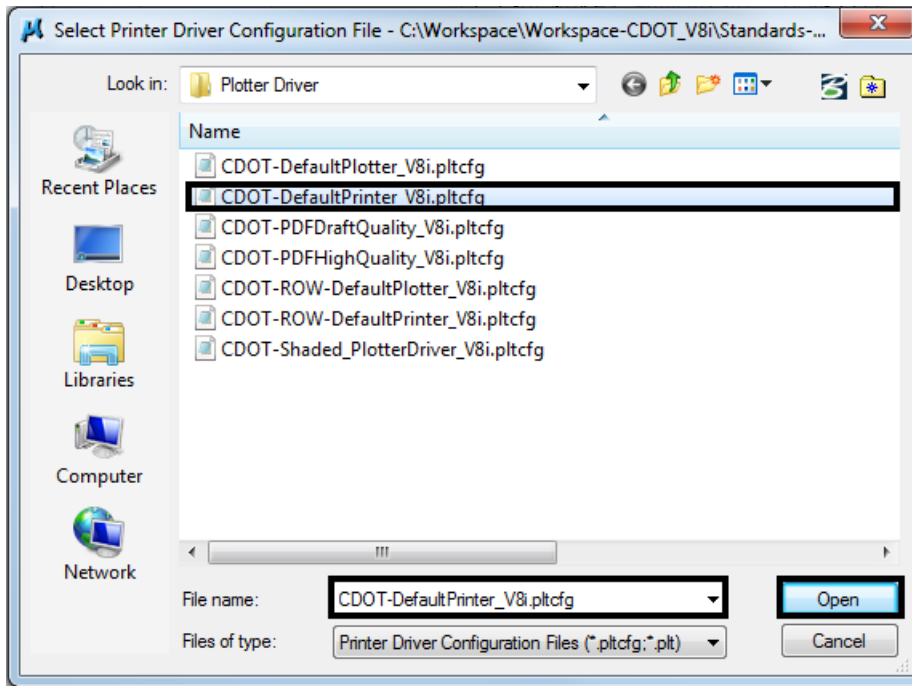
This document guides you through the basic steps you will need to edit a CDOT Printer Driver.

The Print Driver configuration file format was changed with MicroStation XM and is now stored in XML format. Each of the new print driver configuration files now has an extension **.pltcfg**. Each default Print Driver configuration file has default settings that should not have to be edited. However, printers can vary in the naming convention for 11x17 inch sized paper and default plotters are usually not set as user default printers. If the default paper size does not set automatically, you can make the necessary adjustments. Also, if you have a default plotter, you can set the network path in the printer driver configuration path. The CDOT default printer driver configuration file is located under: *C:\Workspace\Workspace-CDOT\_V8i\Standards-Global\MicroStation\Plotter Driver\*.

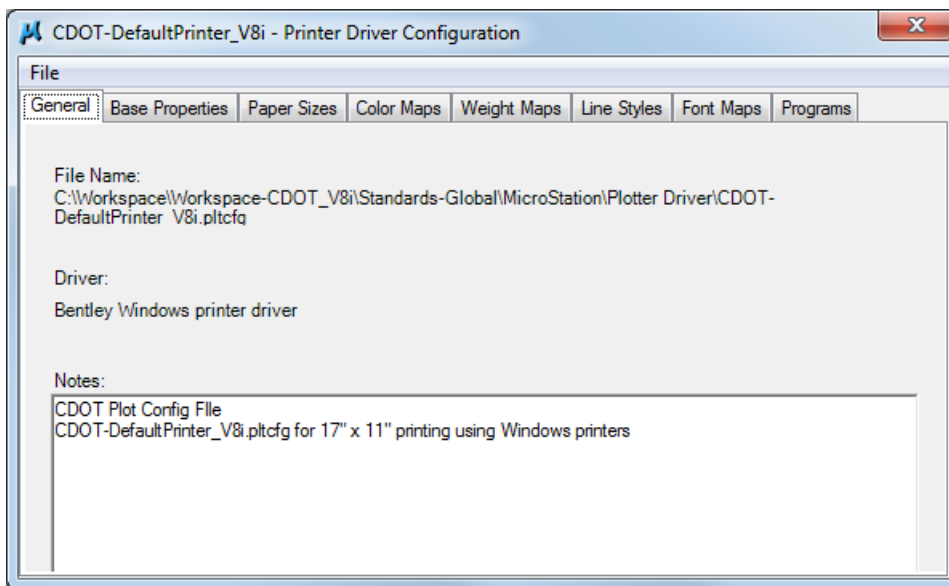
1. The name of the file is *CDOT\_DefaultPrinter\_V8i.pltcfg*. **Open** the file from within MicroStation V8i using the **Print Driver Configuration Editor**. It can be invoked from the **MicroStation Print** dialog's **File/Edit Printer Driver Configuration** menu.



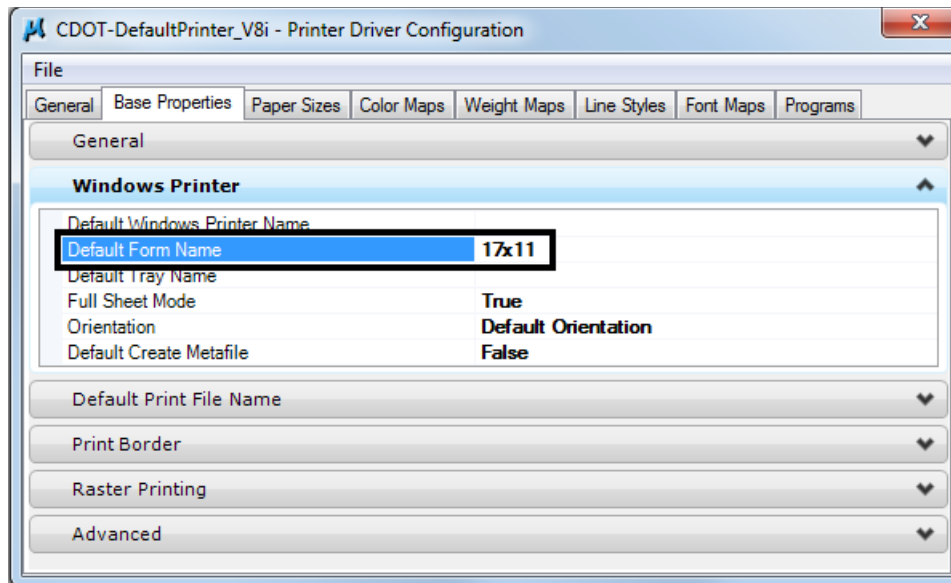
- Navigate to *C:\Workspace\Workspace-CDOT\_V8i\Standards-Global\MicroStation\Plotter Driver\* and **open** the printer driver.



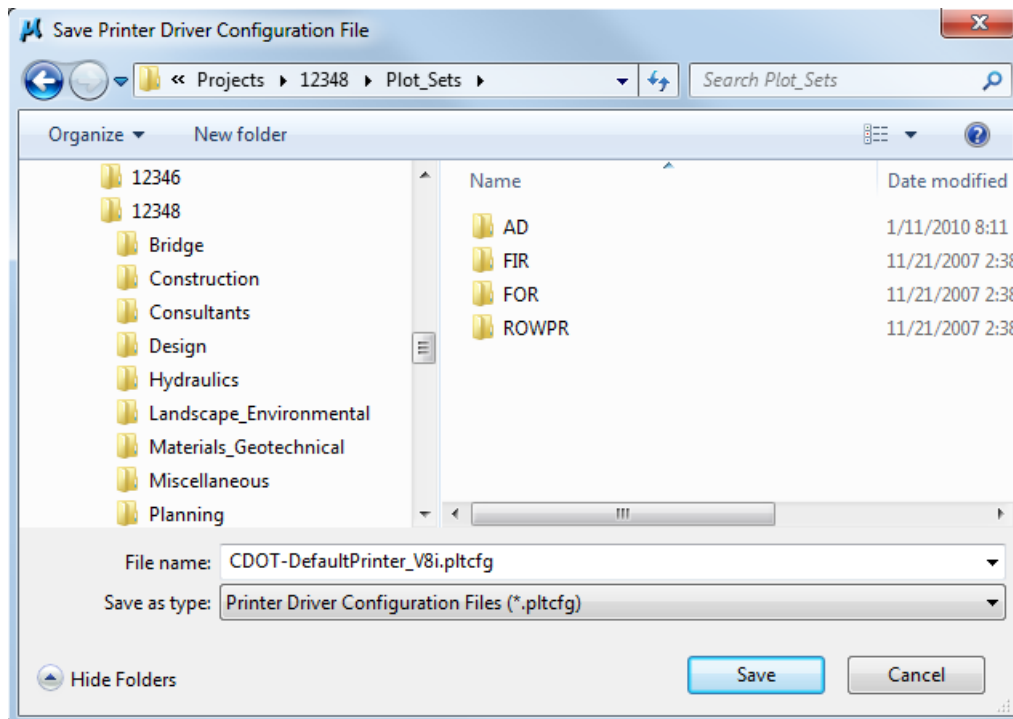
- You will see this display after the file is opened.



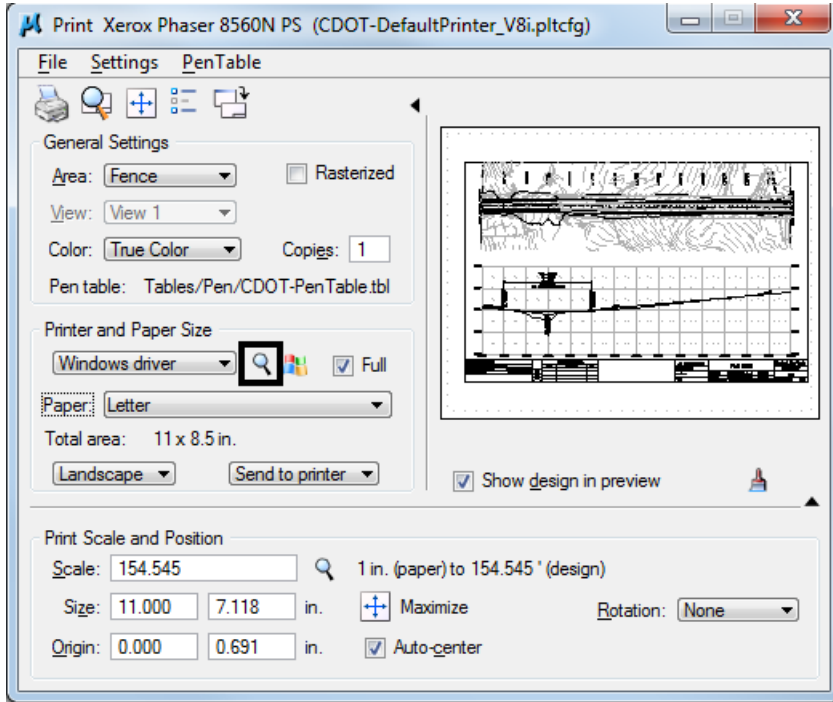
## Setting the Default Form Size



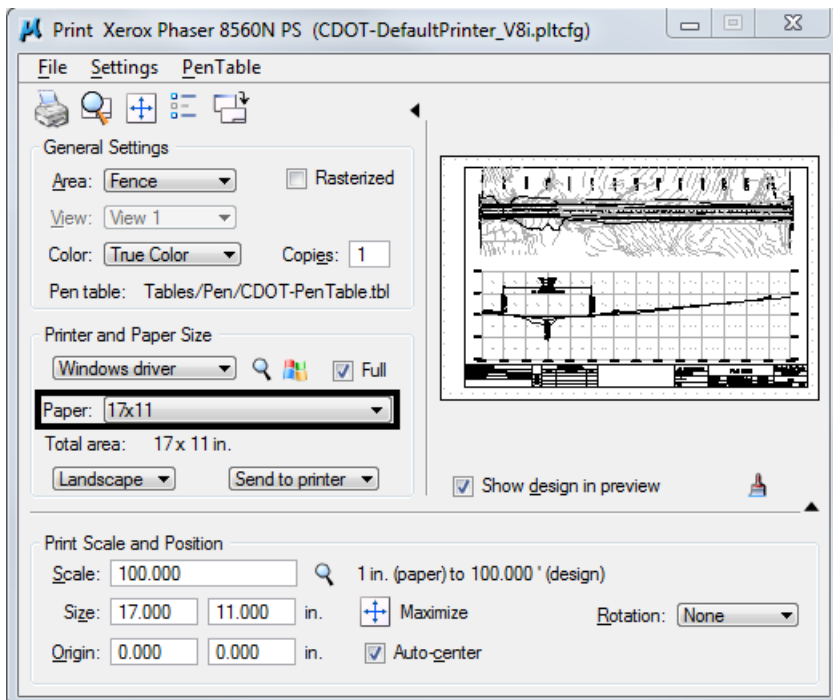
1. The line item highlighted in the above screen capture needs to be edited with the proper sheet size definition for the default printer. Check your printer preferences for the sheet size definition. Typically the sizes will be one of the three: **11x17**, **Tabloid** or **"11x17"**.
2. Once the file has been edited, save a copy of *CDOT-DefaultPrinter\_V8i.pltcfg* in your project's **Plot\_Sets** folder. If you save the changes back to the original file located at *C:\Workspace\Workspace-CDOT\_V8i\Standards-Global\MicroStation\Plotter Driver\*, the file will be overwritten the next time you log into your workstation.



- In the Print dialog box, <D> the **Search** icon next to the **Bentley driver**. Navigate to your project's **Plot\_Sets** directory and select the edited **pltcfg** file. This will now become the default settings until you select a different **pltcfg** file.



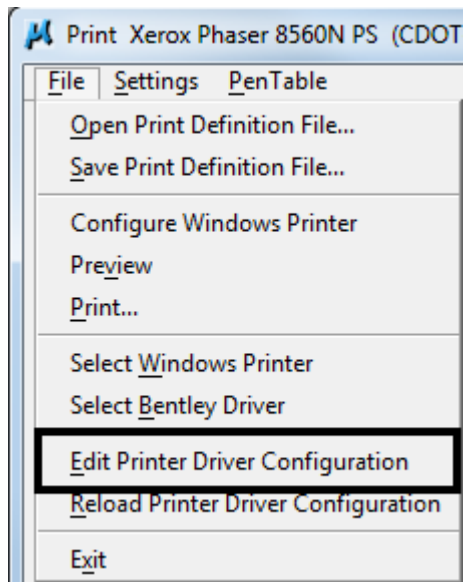
- Once you have selected the correct **pltcfg** file, you will notice the **Paper** size is defaulting to the new settings and the print view is now correct.



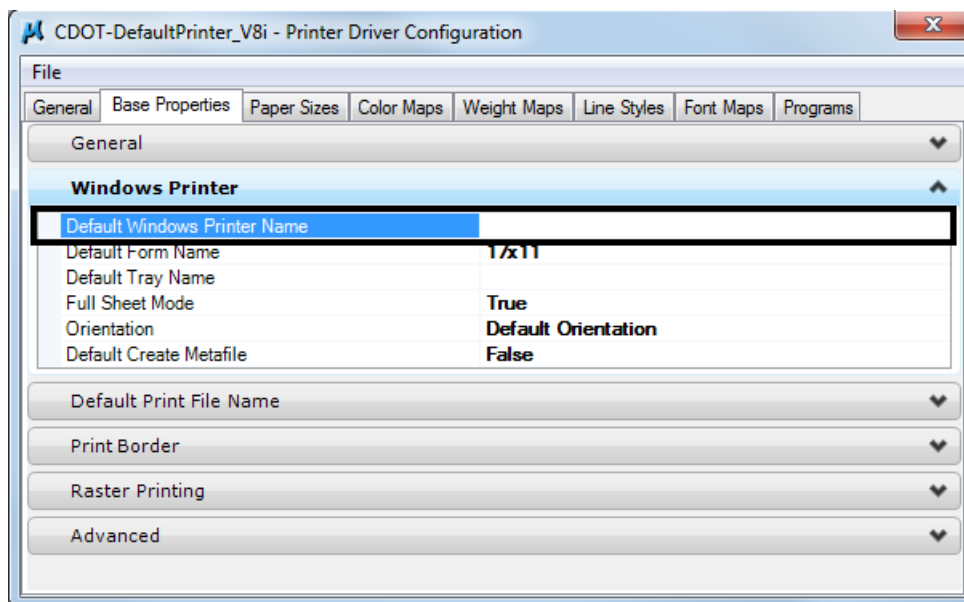
## Setting the Default Plotter Path

The default path for a plotter or non default printer can be edited and set inside the **Print Configuration** file.

1. The name of the file that should be edited for a default plotter is **CDOT\_DefaultPlotter\_V8i.pltcfg**. **Open** the file from within MicroStation V8i using the Print Driver Configuration Editor. It can be invoked from the MicroStation Print dialog's **File > Edit Printer Driver Configuration** menu.



2. Navigate to **C:\Workspace\Workspace-CDOT\_V8i\Standards-Global\MicroStation\Plotter Driver\** and open the printer driver.



- The line item in the above screen capture needs to be edited with the proper default plotter path. Typically the path will be: `\\Server_Name\Plotter_Name`.

