

State of Colorado
Department of Transportation



**CDOT OpenRoads Designer Workspace
Installation Guide**

June 2021

CDOT ORD Frequently Asked Questions

What is the CDOT OpenRoads Designer (ORD) Workspace?

The CDOT ORD Workspace is Colorado Department of Transportation's Workspace files for the Bentley OpenRoads Designer Connect Edition software. The CDOT ORD Workspace contains resources, standards and tools necessary for designing projects in accordance with CDOT Standards.

Note: The current CDOT ORD Workspace is not complete and will continue to be changed and modified as needed.

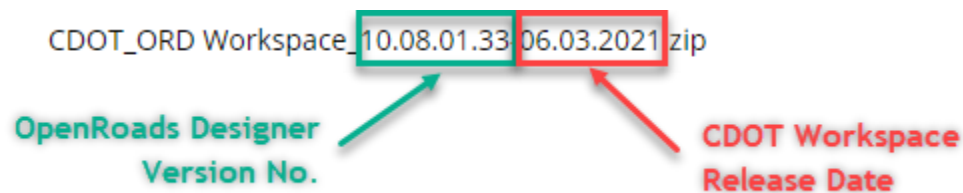
What version of OpenRoads Designer is the CDOT Workspace certified for?

The CDOT ORD Workspace is currently certified for use with **OpenRoads Designer Connect Edition, Version 10.08.01.33**.

What is the most current version of the CDOT Workspace? Designer

CDOT ORD Workspace_10.08.01.33-06.03.2021-01. Released on June 3rd, 2021.

What Do the CDOT Version Numbers Mean?



How do I install the CDOT ORD Workspace?

There are 2 methods for installing OpenRoads Designer and the CDOT Workspace. The Workspace files/standards can be installed as a (1) local copy to an individual users' machine using the Default OpenRoads Designer install path or (2) installed/stored on a server location or other local folder. It is important to decide which type of installation you want and follow the instructions for installation carefully. Please read this Installation Guide before beginning the installation process.

Can computers have both SS4 and ORD loaded?

Yes, there is no requirement to remove SS4. Both can be installed and co-exist on the same machine.

Is there Bentley training available for OpenRoads Designer CE?

Yes. The Bentley LEARN site has training for OpenRoads Designer Connect Edition and other Connect Edition applications.

Where can the Workspace ReadMe file be found?

The ReadMe file is delivered with the Workspace and is found in the *Configuration* Folder.

CDOT Workspace Installation Guide

Installing the CDOT OpenRoads Designer (ORD) Workspace:

This guide provides steps for installing the *CDOT Workspace Standards* for use with the OpenRoads Designer Software. *OpenRoads Designer* can be installed/configured in 2 different ways: **(1)** to a **SINGLE USERS LOCAL MACHINE/WORKSTATION**, using the *Default Bentley Installation Configuration* -OR- **(2)** to a **SERVER LOCATION** or any other desired path, using a *Custom Installation Configuration*. For more information on how to install the OpenRoads Designer Software please see the Bentley Communities Website:

https://communities.bentley.com/products/road_site_design/

Section 1:

Installing CDOT ORD Workspace (Option 1): Single Users Machine/Bentley Default Installation Configuration:

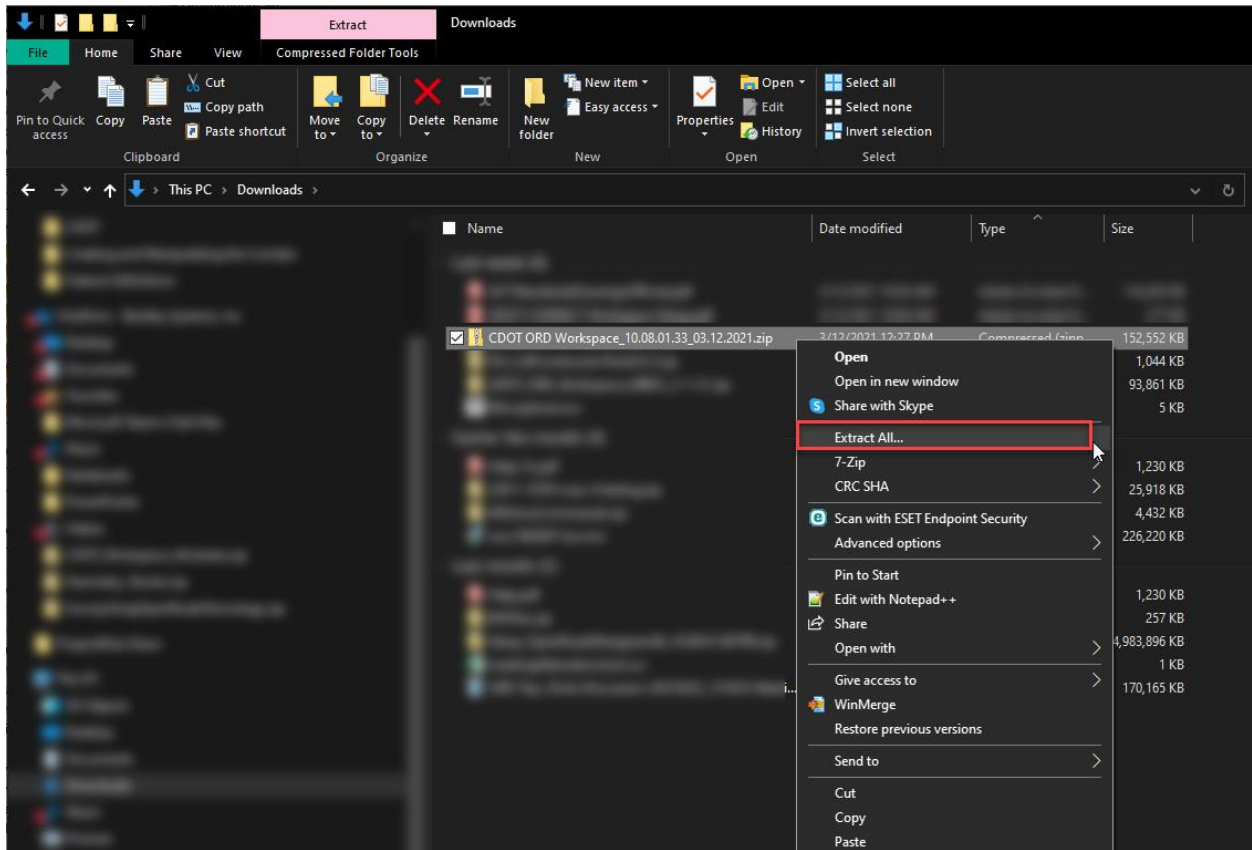
1. Download the ***CDOT ORD Workspace_10.08.01.33-06.03.2021.zip*** file from the CDOT Website:

<https://www.codot.gov/business/designsupport/cadd/implementation-ord-pw-workspaces>

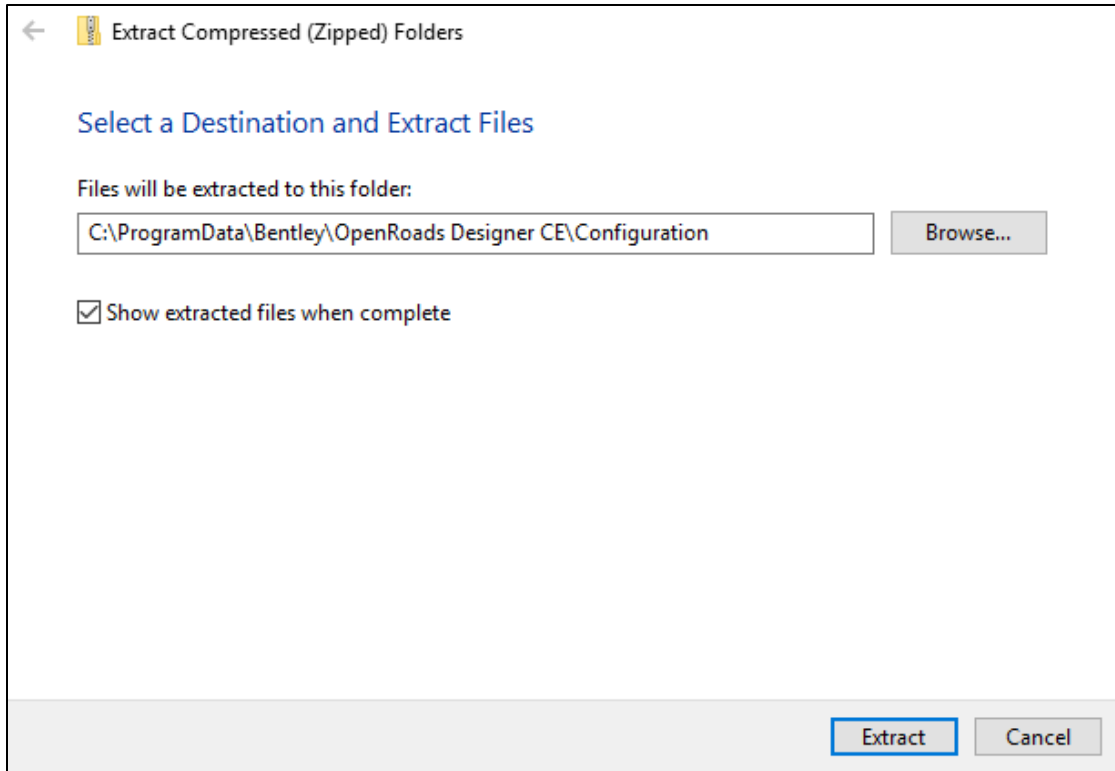
2. Once the zip file is downloaded, extract the contents of the file to the ***C:\ProgramData\Bentley\OpenRoads Designer CE\Configuration*** folder.

NOTE: This is default installation path for OpenRoads Designer workspace configurations.

a. Right-click on the .zip file and select **Extract All...**

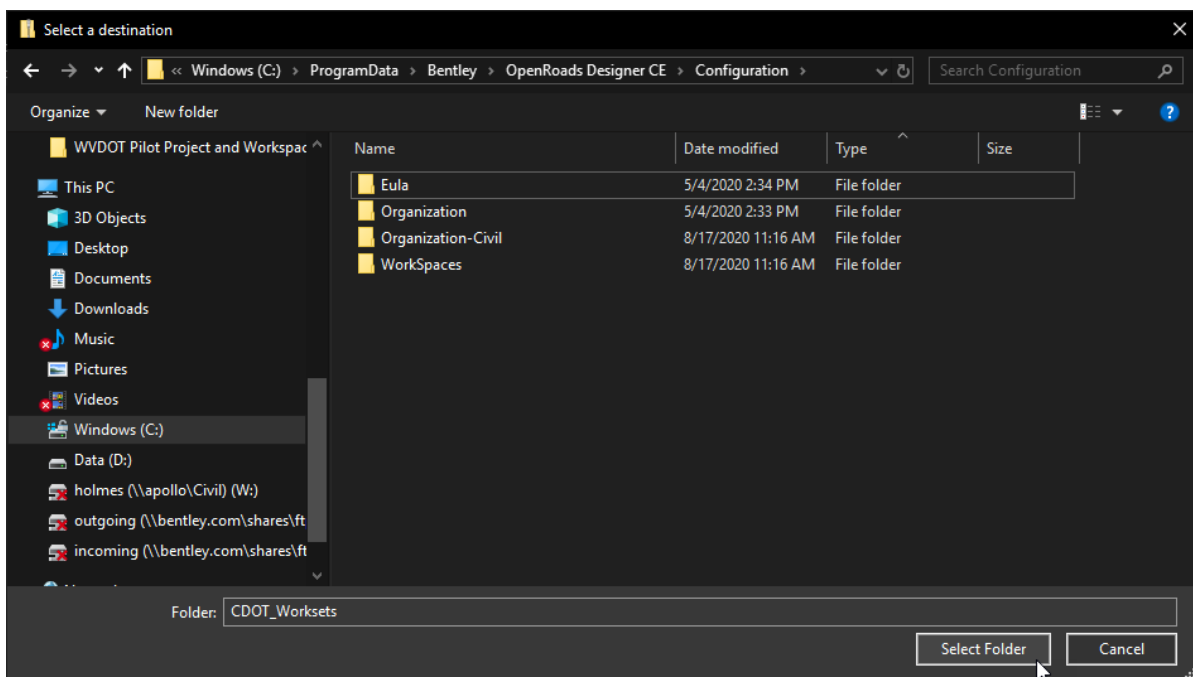


b. On the *Extract Compressed (Zipped) Folders* dialog, click the **Browse...** button next to the **Files will be extracted to this folder:** field.



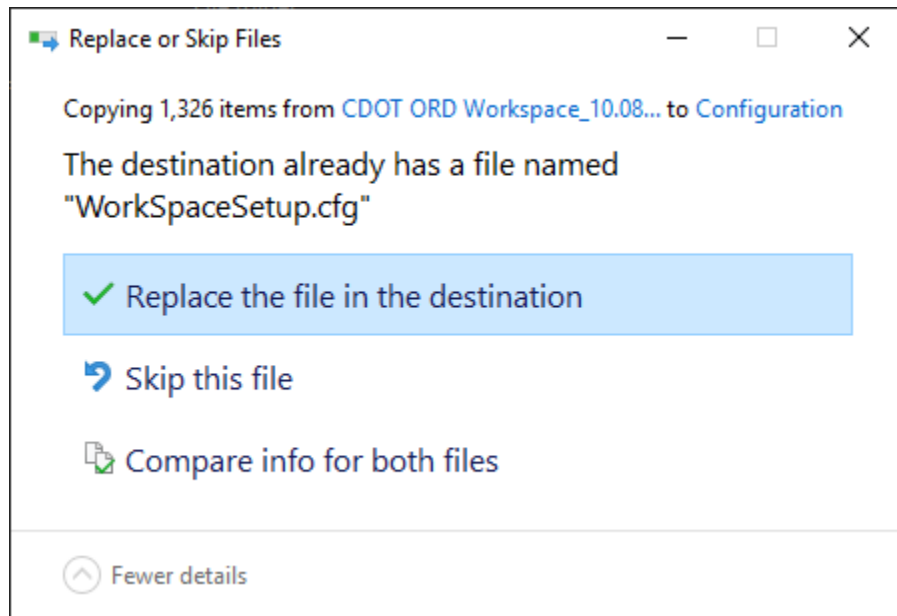
c. Navigate to:

[C:\ProgramData\Bentley\OpenRoads Designer CE\Configuration](#) and click the **Select Folder** button.



d. Click the **Extract** button on the *Extract Compressed (Zipped) Folders* dialog and the CDOT workspace files are copied to the *default Configuration* folder.

- e. You will be prompted to *Replace or Skip* the **WorkspaceSetup.cfg**. Select **Replace the file in the destination**.



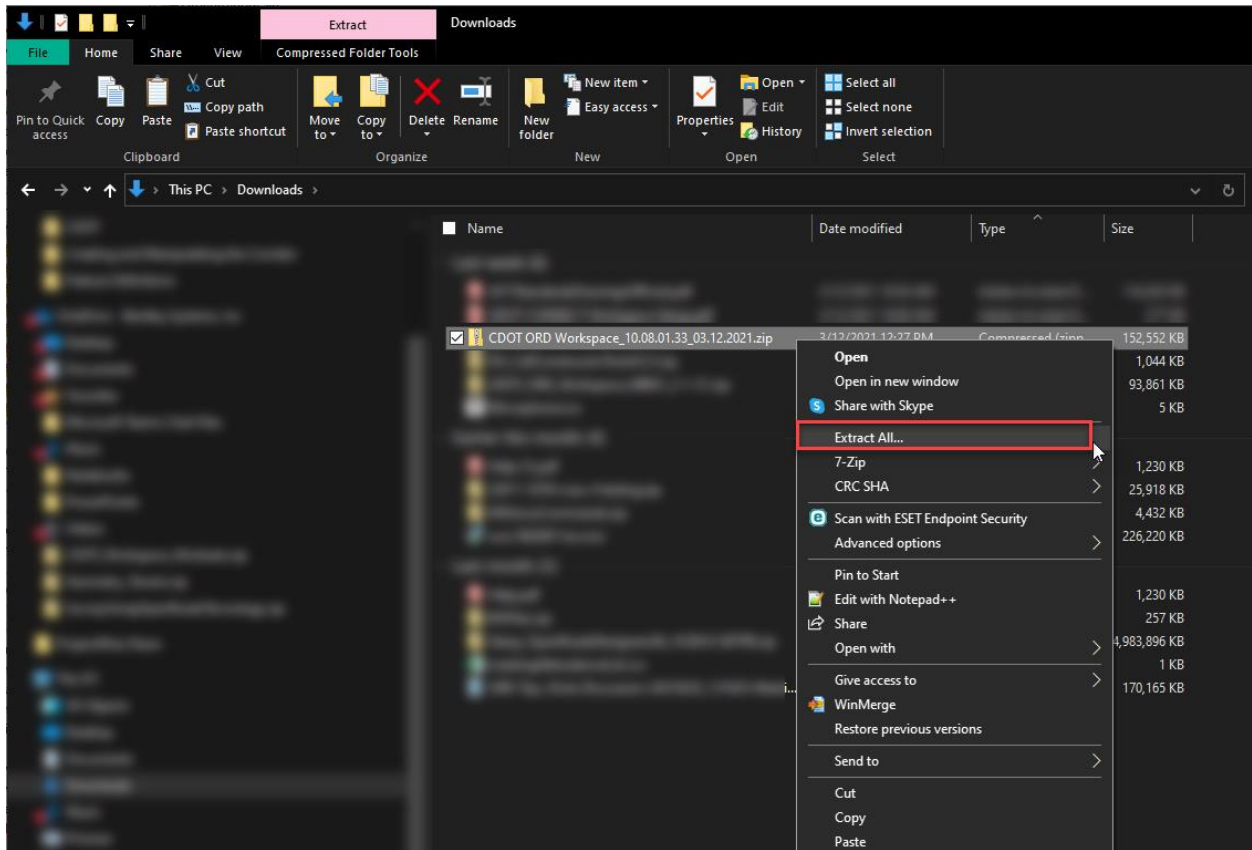
Section 2:

Installing CDOT ORD Workspace (Option 2): Server Location (Multiple Users)/ORD

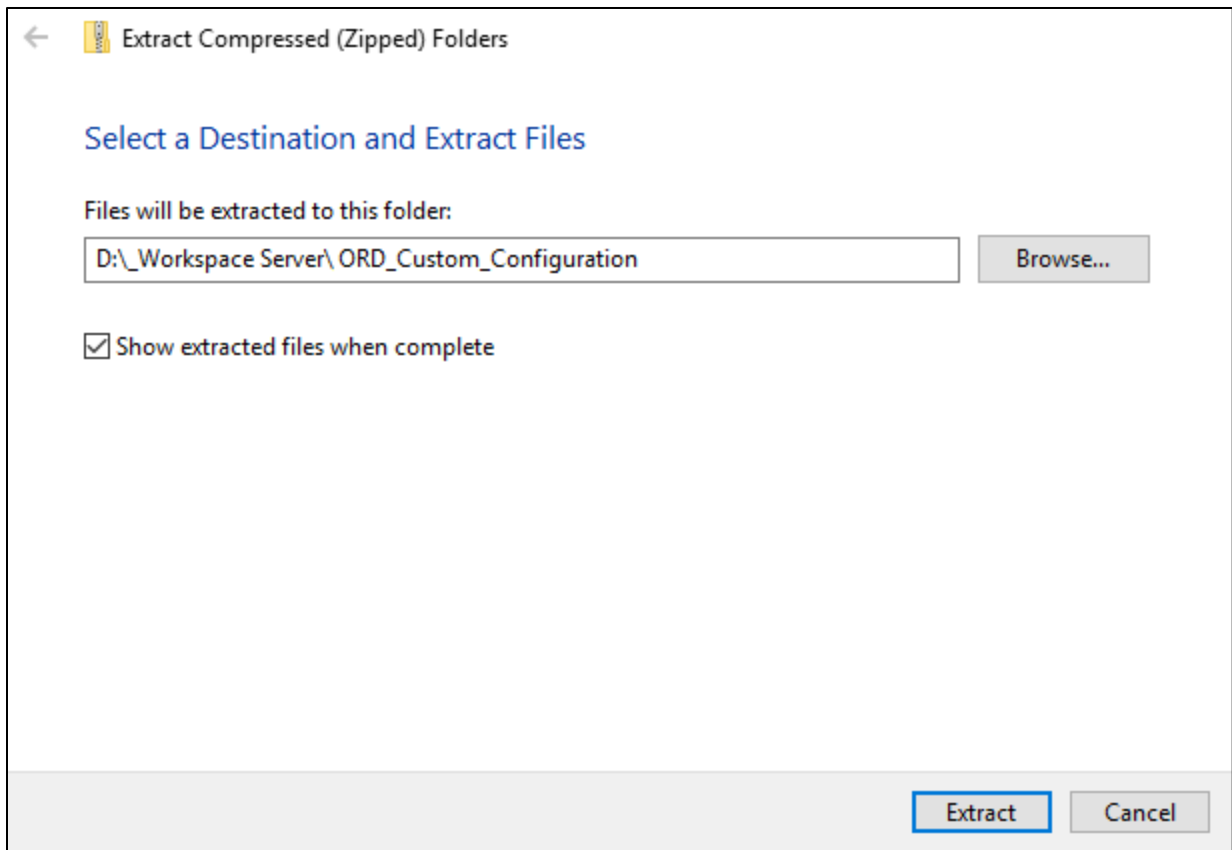
Custom Installation Configuration:

1. Download the **CDOT ORD Workspace_10.08.01.33-06.03.2021.zip** file from the CDOT Website.
2. Once the zip file is downloaded, extract the contents of the file to the **Custom Configuration** path created while installing OpenRoads Designer.

a. Right-click on the .zip file and select **Extract All...**



b. On the *Extract Compressed (Zipped) Folders* dialog, click the **Browse...** button next to the **Files will be extracted to this folder:** field.

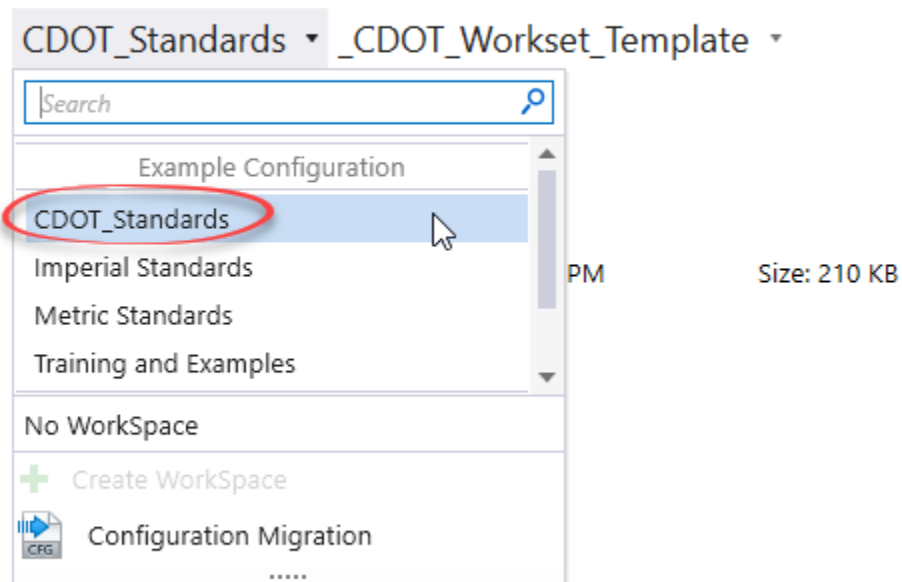


- c. Navigate to the **Custom Configuration** Path/folder created while installing OpenRoads Designer and click the **Select Folder** button.
- d. Click the **Extract** button on the *Extract Compressed (Zipped) Folders* dialog and the CDOT workspace files are copied to the *custom Configuration* folder.

Running OpenRoads Designer with the CDOT Workspace:

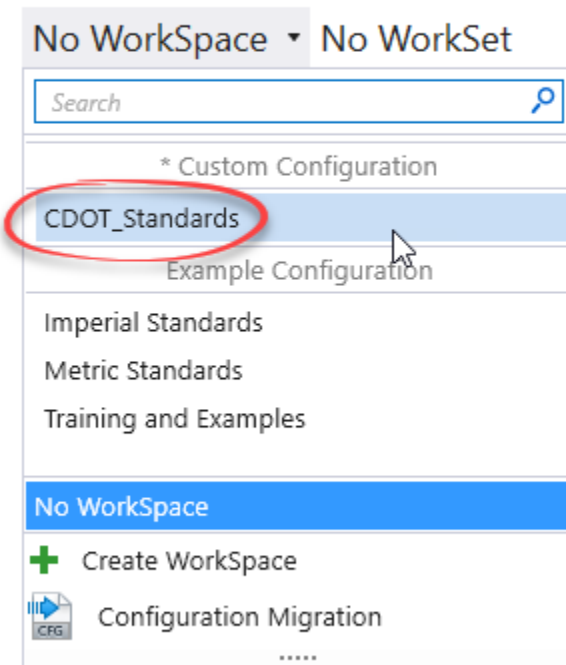
1. Launch OpenRoads Designer.
2. Under the *WorkSpace Menu* select the **CDOT_Standards** option.
 - a. The **LOCAL/SINGLE USER (DEFAULT) CONFIGURATION** installed workspace will load under *Example Configuration*.

OpenRoads Designer CONNECT Edition



- b. **The CUSTOM CONFIGURATION** installed workspace will load under *Custom Configuration*.

OpenRoads Designer CONNECT Edition



Use for a file, start by clicking on Browse.

3. The *CDOT ORD WorkSpace* is delivered with a Workset Template for creating CDOT Worksets (Projects). Please use this template to help with creating CDOT Projects. See the Bentley Communities page for help on creating Worksets:

https://communities.bentley.com/products/building/building_analysis_design/w/building_analysis_and_design_wiki/47020/creating-a-project---workspaces-and-worksets-explained

(Optional) Manually Setting up a Custom Configuration:

If you have already installed OpenRoads Designer on your machine and used the Bentley Default, Installation Configuration path (*C:/ProgramData/Bentley/OpenRoads Designer CE/Configuration/*) but would like to change to a Custom Configuration follow the steps below.

NOTE: *This is not the recommended approach. It is best to set this path when installing OpenRoads Designer.*

1. Open *File Explorer* and navigate to the server and/or folder location where you would like to store the CDOT Workspace Files.

Create a new folder called **ORD_Custom_Configuration**. **NOTE:** *The folder name can be any name desired. It is not required that the name of the folder be ORD_Custom_Configuration. This is the name being used for the purpose of this document.*

This will be your *Custom Configuration* folder.

2. In File explorer, navigate to the *C:\ProgramData\Bentley\OpenRoads Designer CE\Configuration* folder.
3. Open the **ConfigurationSetup.cfg** in Notepad.
4. In the [General] section go to the `_USTN_CUSTOM_CONFIGURATION=` statement and enter the path to your Custom Configuration.

```
_USTN_CUSTOM_CONFIGURATION=//_Workspace Server/ORD_Custom_Configuration/
```

5. In the [Set Configuration] section, reset `_USTN_CONFIGURATION =` to its default value, pointing to the local/installed example configuration folder.

```
_USTN_CONFIGURATION= C:/ProgramData/Bentley/OpenRoads Designer CE/Configuration/
```

NOTE: *Be sure to use forward slashes (/) when defining a path in a Bentley .cfg file.*

```

#-----
# ConfigurationSetup.cfg - Configures the root Configuration directory
# for Your Organization
#
# The main function of this configuration file is to allow user to specify
# the root Configuration directory to activate. The active Configuration
# directory is represented by _USTN_CONFIGURATION. By default, it points to
# the installed Configuration defined by _USTN_INSTALLED_CONFIGURATION,
# which can consist of example WorkSpaces and WorkSets.
# If your organization has its own Configuration directory, you can define
# _USTN_CUSTOM_CONFIGURATION to that directory path and use it as follows.
#
#_USTN_CUSTOM_CONFIGURATION = D:/../MyConfiguration/
#_USTN_CONFIGURATION : ${_USTN_CUSTOM_CONFIGURATION}
#-----

#-----
# START: The section defines user selection at the time of installation.
# These lines are generated by installer.
[General]
_USTN_CUSTOM_CONFIGURATION=//Workspace Server/_ORD_Custom_Configuration/

[SetConfiguration]
%if !defined (_USTN_USER_CONFIGURATION)
%if defined (_USTN_CUSTOM_CONFIGURATION) && (${_USTN_CUSTOM_CONFIGURATION} != "") && exists (${_USTN
_USTN_CONFIGURATION = C:/ProgramData/Bentley/OpenRoads Designer CE/Configuration/
%endif
%endif

```

6. Save and close the *ConfigurationSetup.cfg* file.
7. OpenRoads Designer is now setup to use a *Custom Configuration* path. Follow the steps in the previous section: [Installing CDOT ORD Workspace; Custom Configuration](#) to install the CDOT Workspace.