

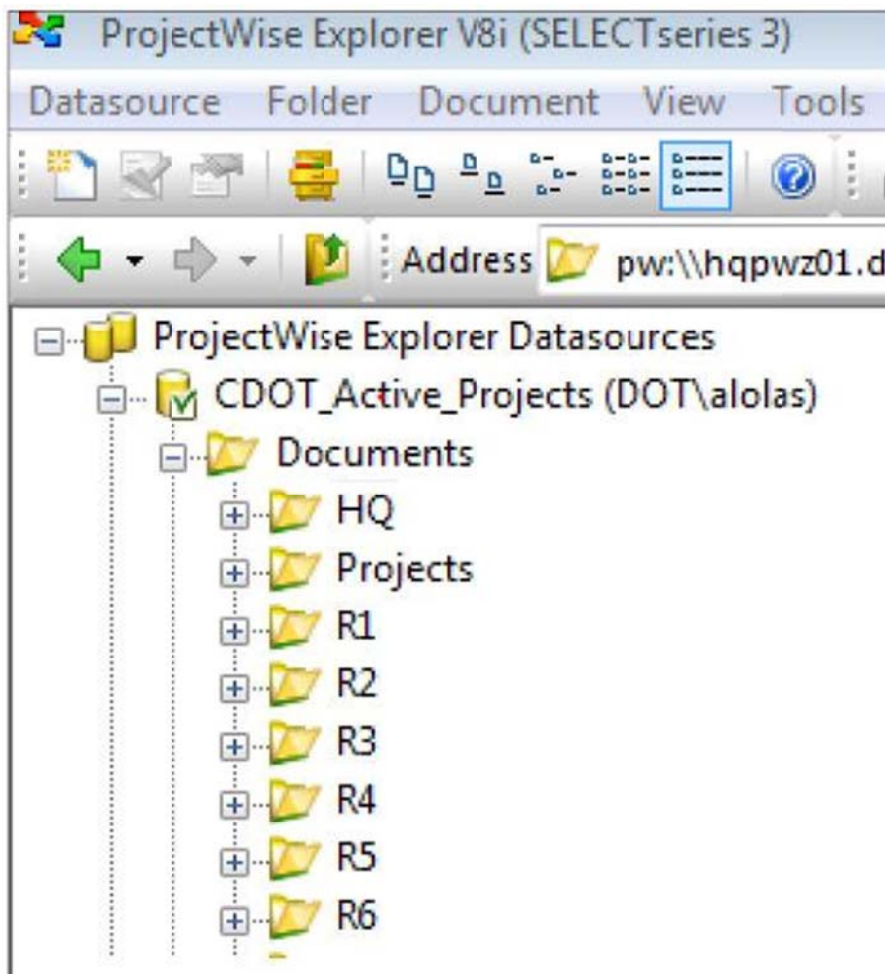
To All ProjectWise Users:

Effective since Monday, August 5th, 2013, CDOT has implemented the new ProjectWise - Project Folder Structure for the CDOT_Active_Projects datasource approved by the ProjectWise Task Force. This upgrade transferred all of the existing projects folders into the new project folder structure in ProjectWise. These changes will not affect CADD referencing.

Some of the purposes of implementing this new project folder structure include items like: synchronizing SAP documents into the proper project folder, the merger of Region 6 into Region 1, and the ease of creating new project folders automatically.

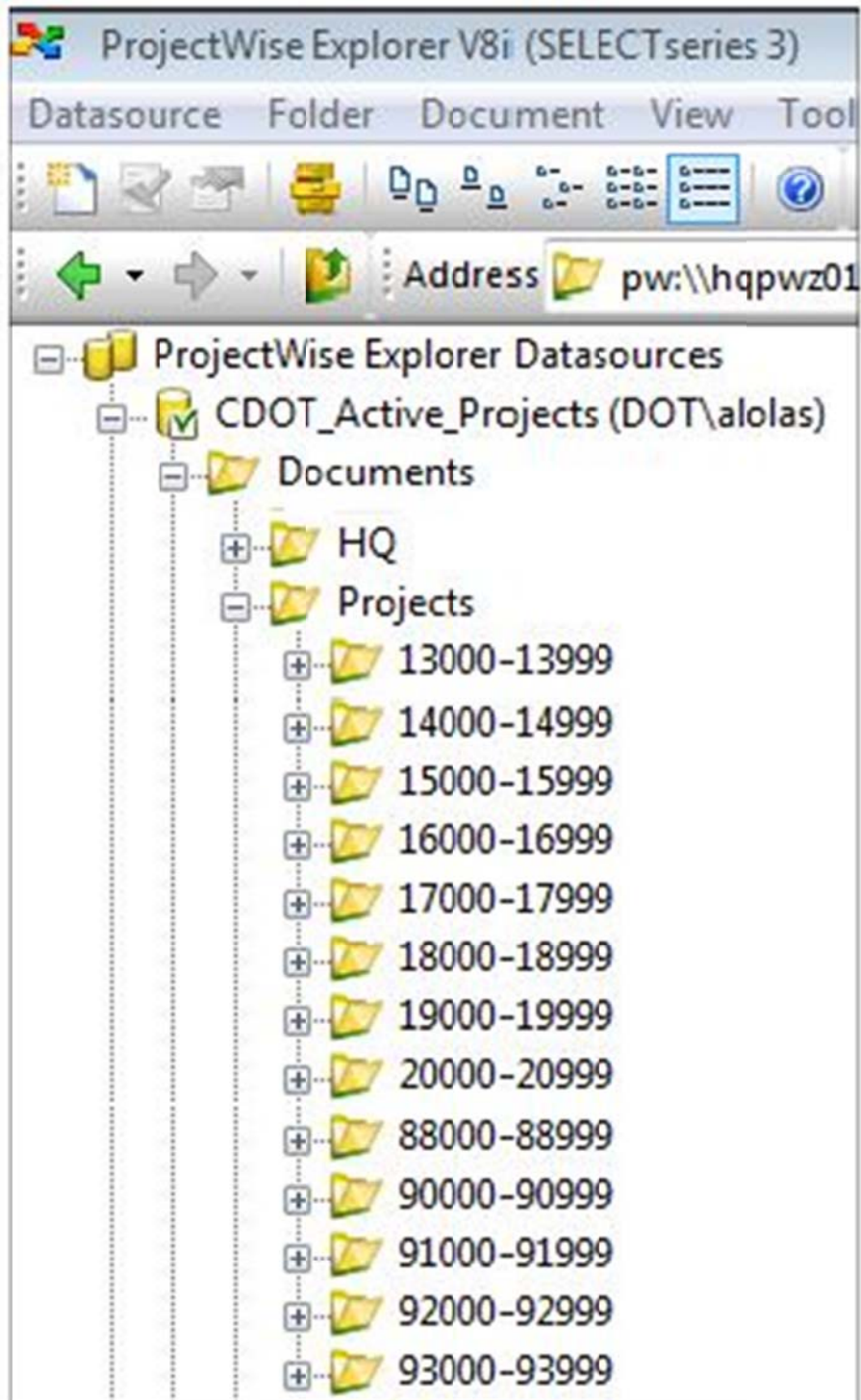
Users can expect to see the following changes:

- The illustration below shows the old project folder structure for the active project data sources:

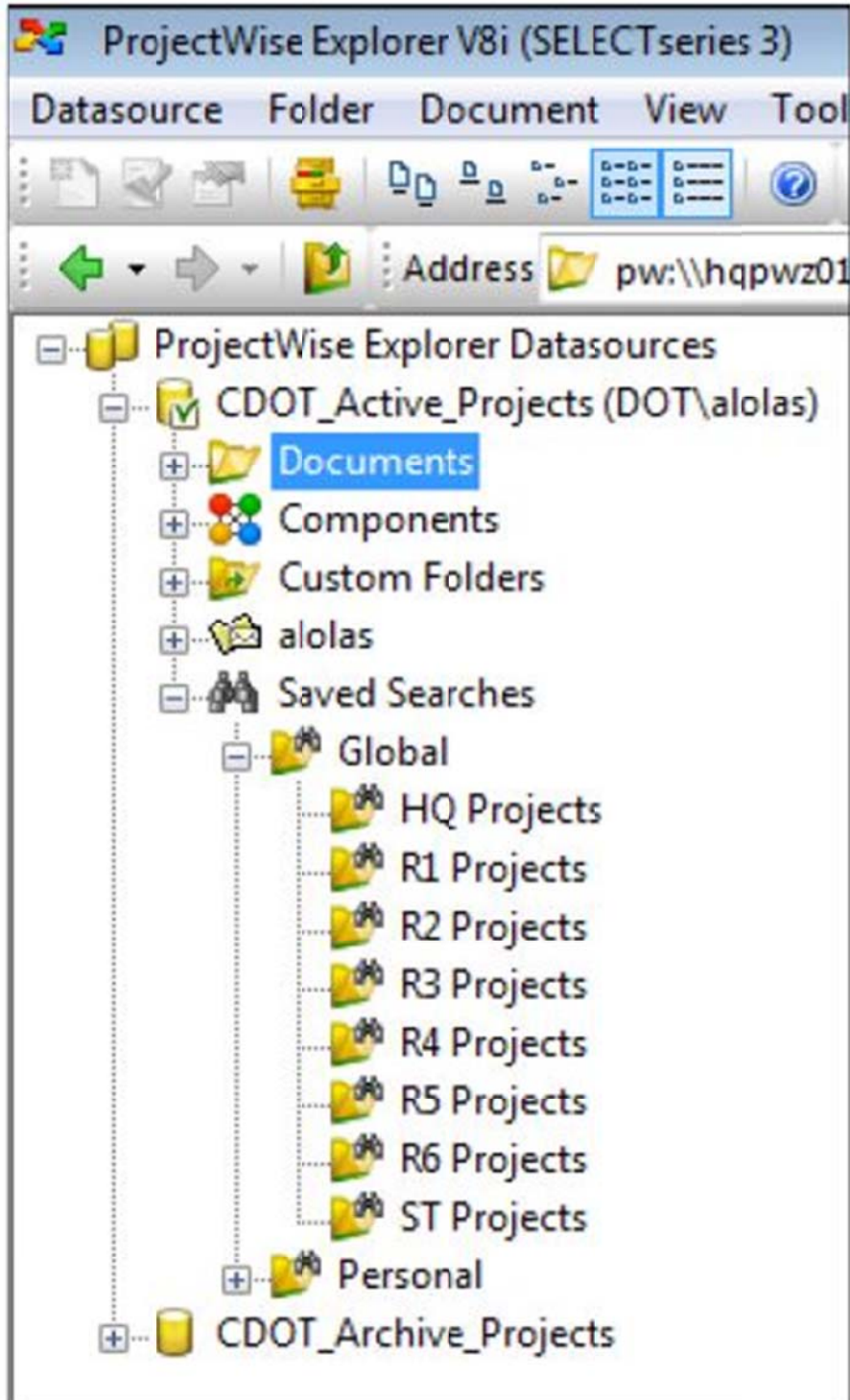


New Project Folder Structure Details

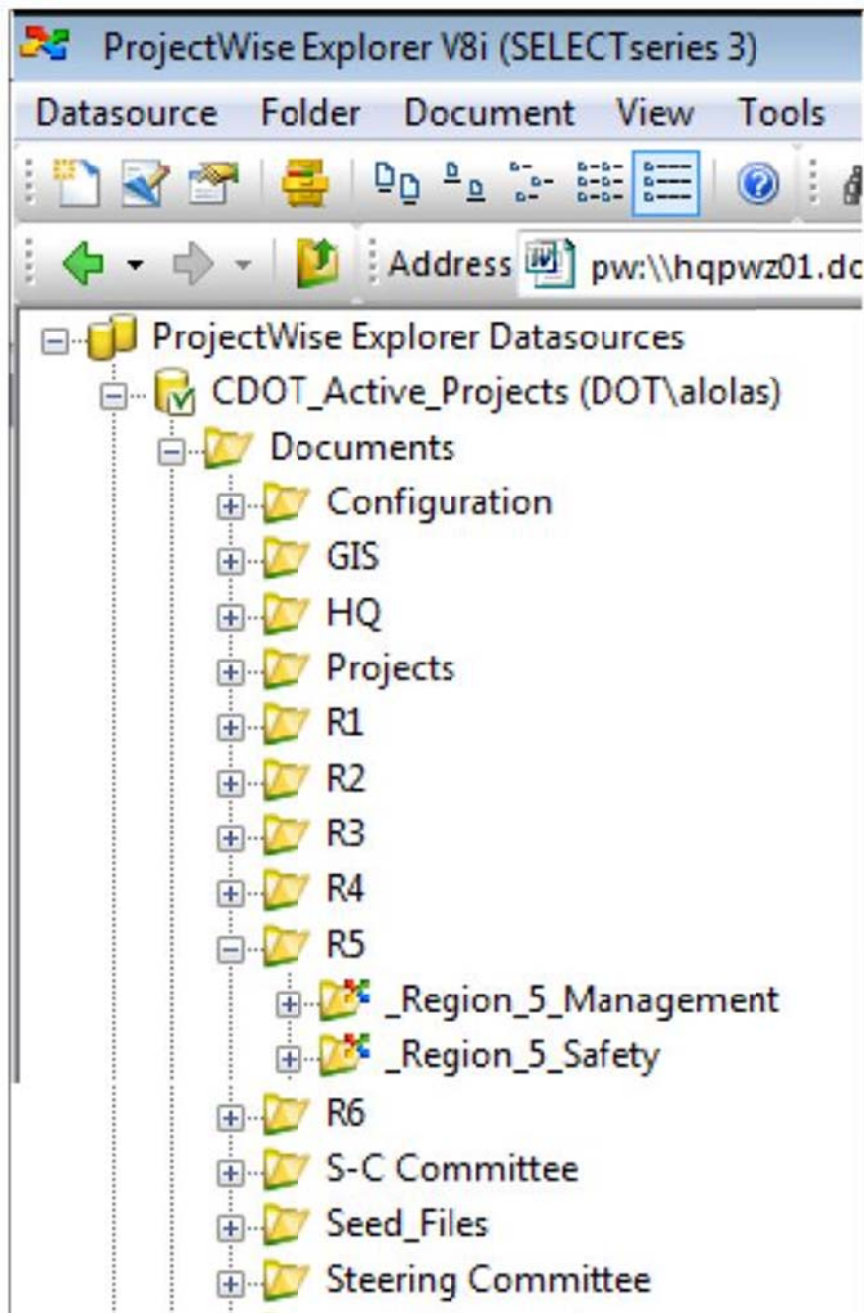
- The illustration below shows the new (and current) ProjectWise project folder structure for the active project data sources that was voted upon and approved by the user's community:



- For those who would like to see the region's project structure folders listed the old way, a global search has been created to emulate that project folder structure. The user can click on the region's projects and will see a listing of all regional projects in the right-hand portion of ProjectWise Explorer. This global search is available to all users:



- The previous project folder structure will be kept, however it will be used to contain non-project specific documents for each region. An example of it is shown below:



For more information on how to use ProjectWise, please click here: [ProjectWise User's Training Materials](#) .

Also, please feel free to contact CDOT CADD Support (303.757.9598) with any questions or comments regarding this new upgrade.