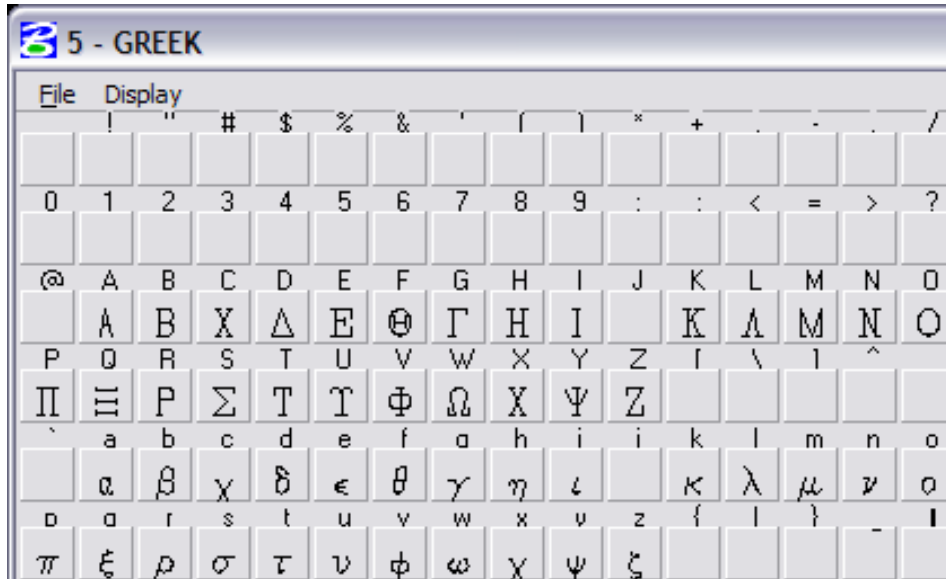


This document guides you through placing Greek characters using the MicroStation Text Editor. Greek characters can be placed within the typed text string using this procedure.

Available Characters

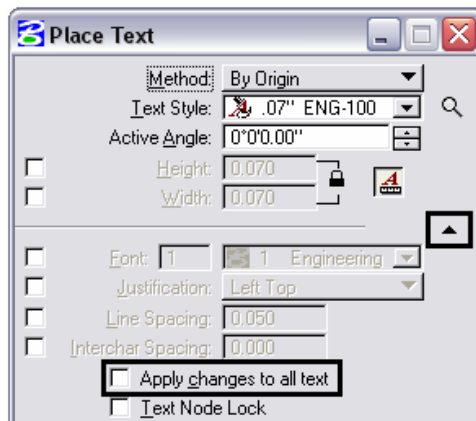
1. The following is a list of available characters in the GREEK font (Font 5).



Note: This Graphic shows what Keyboard Characters will produce the desired Greek Character. The Keyboard characters will show up in the Text Editor Dialog Box when placing and editing these characters. The actual Greek Character will show up in MicroStation and print.

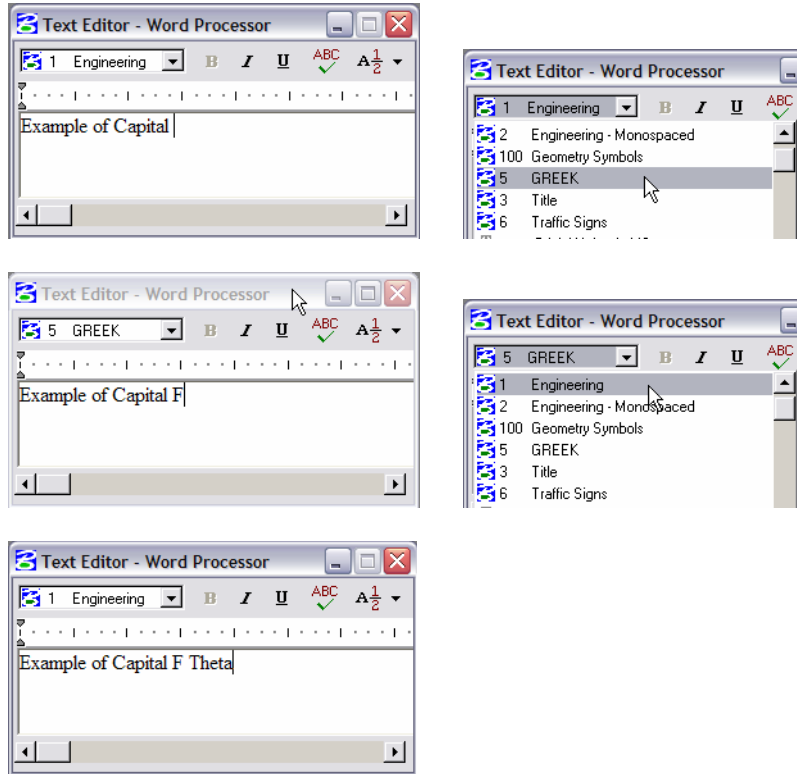
Placing Text with Greek Characters

2. Before entering text into the Word Processor, expand the Place Text box and uncheck the Apply Changes To All Text check box.

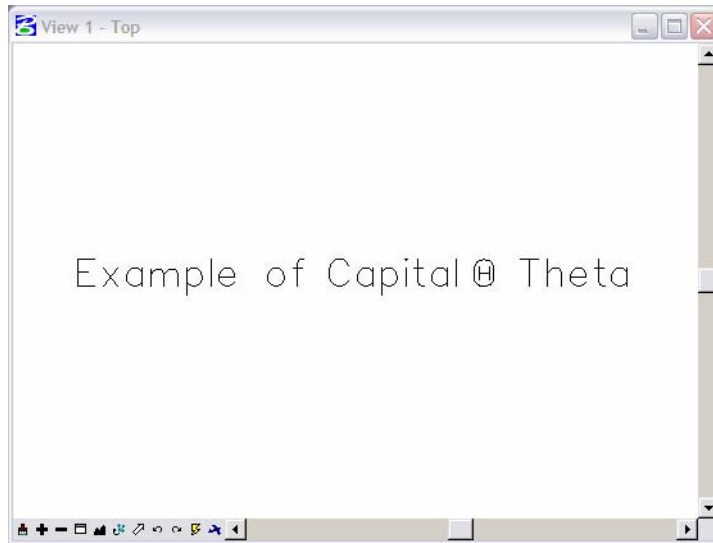


CDOT Greek Characters.pdf

- When placing text using the MicroStation Word Processor, select **Font 5 (GREEK)** from the drop-down list as shown below, and type the appropriate character from above into the Word Processor. Switch back to the original font to continue typing text.

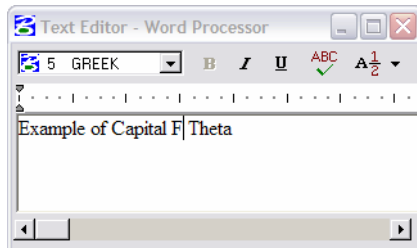


- Example of text placed in MicroStation.



- Example of text being edited with MicroStation Text Editor.

CDOT Greek Characters.pdf



Note: The keyboard character displays in the editor, not the actual Greek Character.