

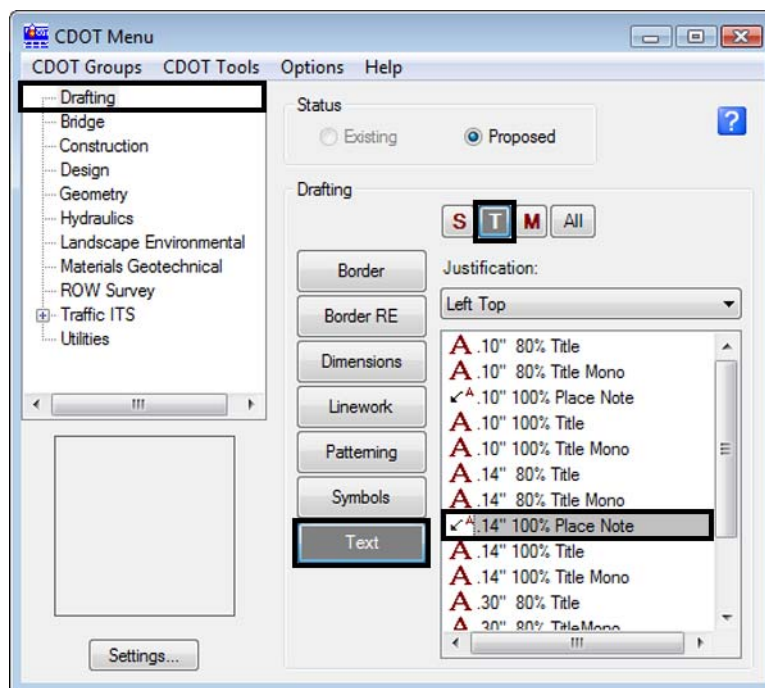
# LAB 23 - Annotation

## Chapter Objectives:

- Annotate using the Place Note command

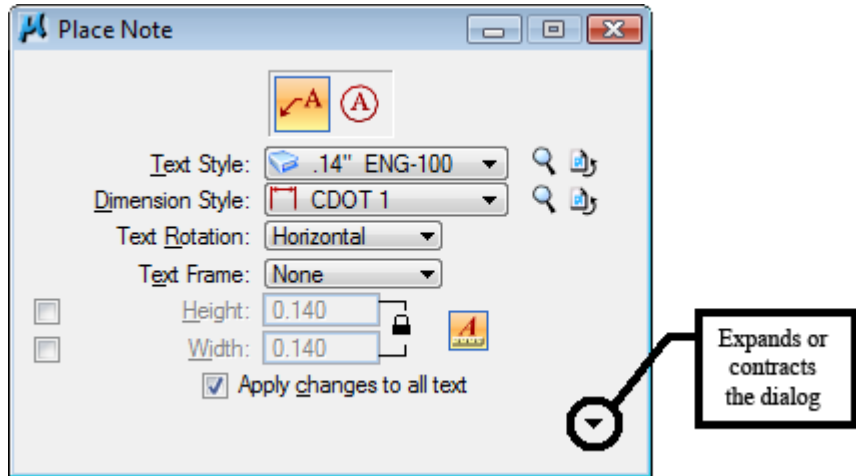
Annotate the locator map using the MicroStation place note command. First select the correct symbology using the CDOT Menu.

1. Activate the **Drafting** Group Display.
2. <D> Text button in Drafting area.
3. Set the [Title](#) Text Type (button labeled T in *Drafting* area).
4. Set the **Justification** to *Left Top*
5. Select *.14" 100% Place Note* as shown.

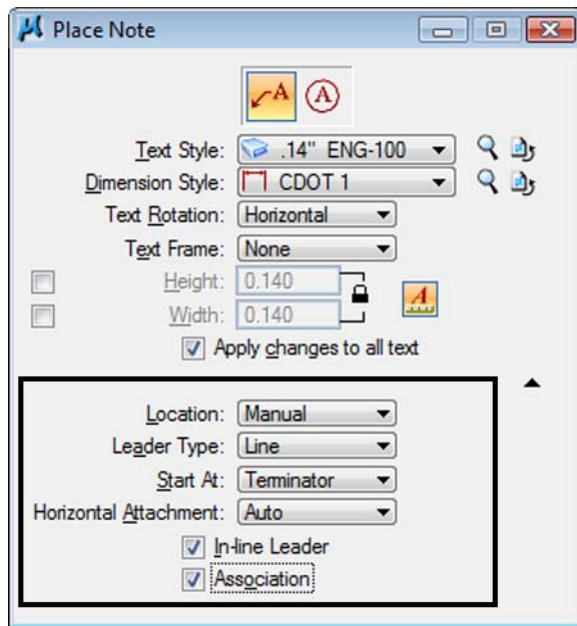


The correct settings and symbology are now set and the MicroStation Place Note command should automatically execute with the correct Text Style specified in the Place Note dialog.

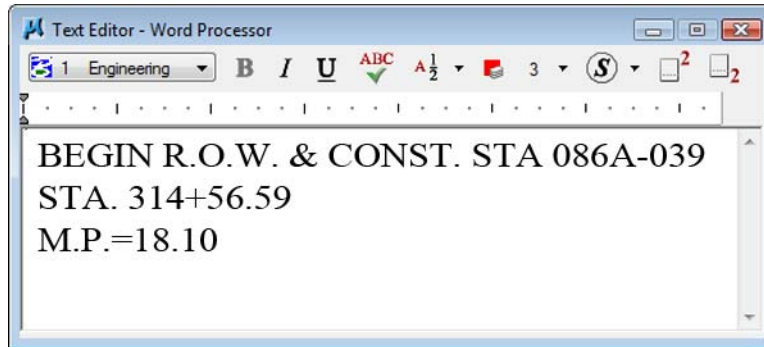
- 6. Select the Dimension Style *CDOT 1*



- 7. **Expand** the Place Note dialog and note the available options. Make sure the options selected match those shown below.



8. **Key-in** the required text as shown.

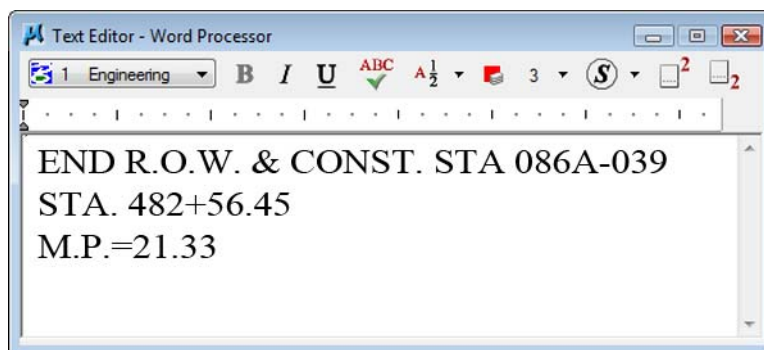


9. **Follow the MicroStation prompts** to place the leader line and text (the first <D> will define the location of the arrow).

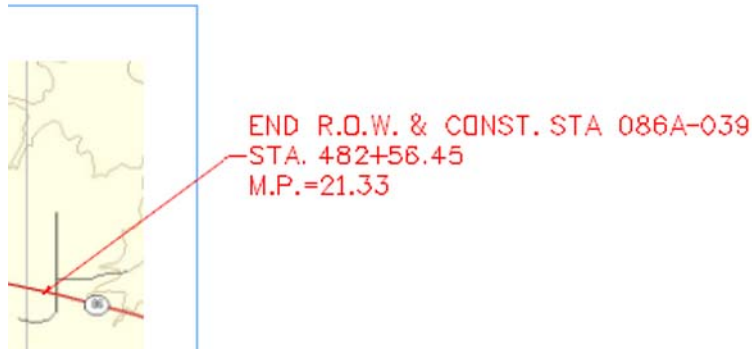


**Repeat** for the end of project information.

10. **Key-in** the required text as shown.



Follow the *MicroStation prompts* to place the leader line and text



11. Select **File > Save Settings**

**Challenge Exercises:**

- Insert a scale bar cell and/or north arrow (General.cel)
- Input a basis of bearing note
- Replace the information in the top-left corner of the sheet (ROW.cel)

