

LAB 13 - Create a project specific border

In the last section, you placed a generic border for your plan/profile sheet from the CDOT menu. This is handy when you have only one or two sheets to create since you have to edit the border with project specific information for each sheet. But what if you had several sheets to create? You wouldn't want to edit every sheet to add the project information. Instead, you can create a project-specific border that can be used for all sheets of the same type. This way, you only have to fill in the project information one time.

Chapter Objectives:

After completing this exercise you will know how to:

- Create a project-specific border cell library.
- Use the CDOT Menu to place the border and associated information.
- Edit the border text to place project-specific information.
- Make the border graphics a cell.

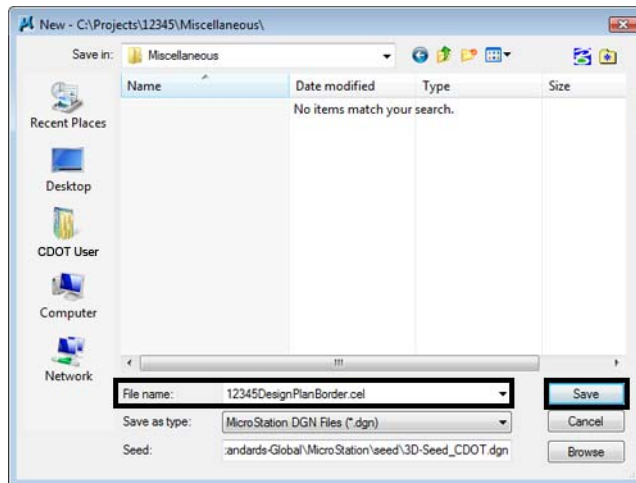
Lab 13.1 - Create the Border File

Since you will use this border for multiple sheets, create one project border to avoid editing multiple borders later.

1. In **MicroStation Manager**, select **File > New**.
2. Set the directory to **C:\Projects\12345\Miscellaneous**.
3. Verify the **Seed File** is set to **3D-Seed_CDOT.dgn**, if not then select it as the seed file.
4. In the **Name** field, key in a drawing file name **12345DesignPlanBorder.cel**.

Note: The **.cel** extension denotes this file as a cell library.

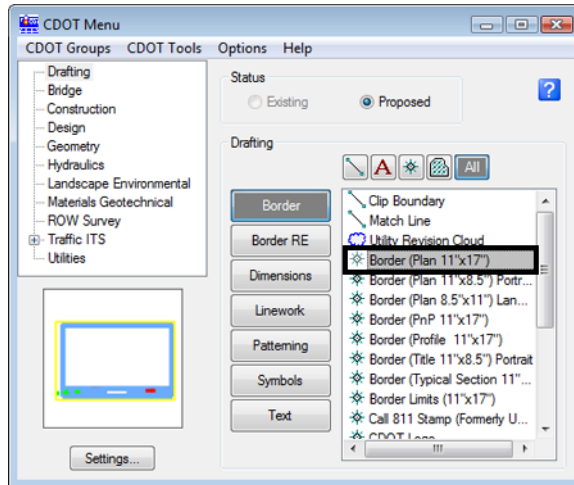
5. In the **New** dialog box, select **Save**.



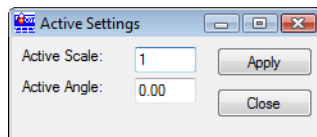
6. The file you created will be highlighted. Select **Open** to open that file.

Lab 13.2 - Use the CDOT Menu to Create the Border

1. From the CDOT Menu Explorer, select **Drafting** and set the **Category** to **Border**.
2. Select the Item **Border (Plan 11"x17")**



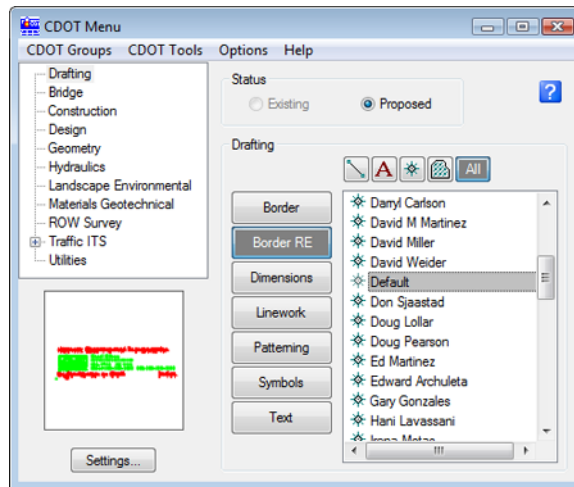
3. Select **Settings** and set **Active Scale** to **1** and **Active Angle** to **0**.



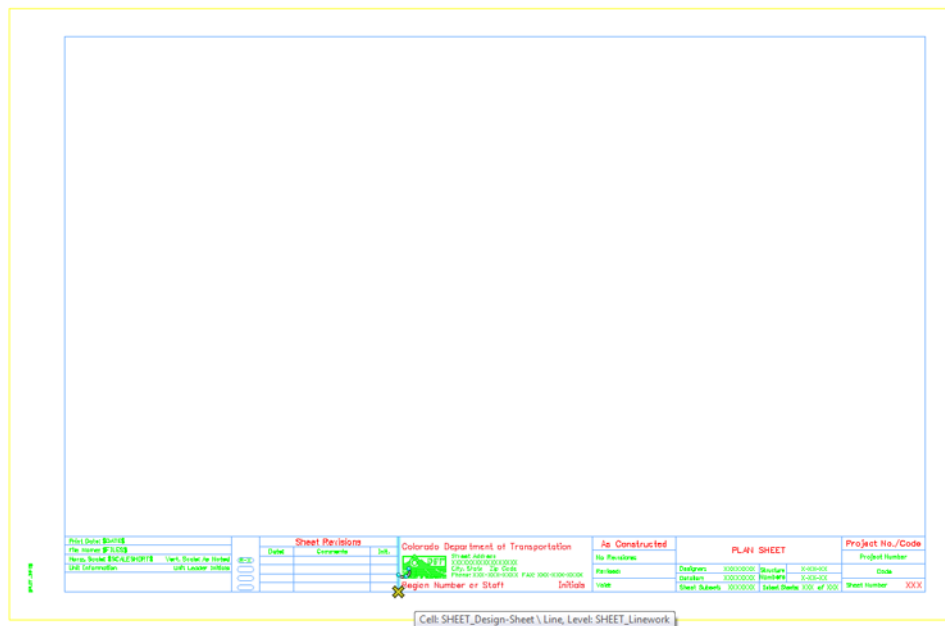
Note: You will create the generic project border cell at a scale of 1 (11 x 17 master units). You'll actually scale the border, according to your plot scale, later when the cell is placed in the sheet file.

4. Select **Apply** and **Close** in the **Active Settings** box.
5. <D> to place the border anywhere in the blank file.
6. Set the **Category** to **Border RE**.
7. Select the Item **Default**.

8. Fit the view.



9. When prompted to locate the Region Engineer cell, <D> to the location shown.



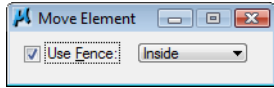
Note: You will not place the bar scale and north arrow cell now, but later in each individual sheet.

Move the border

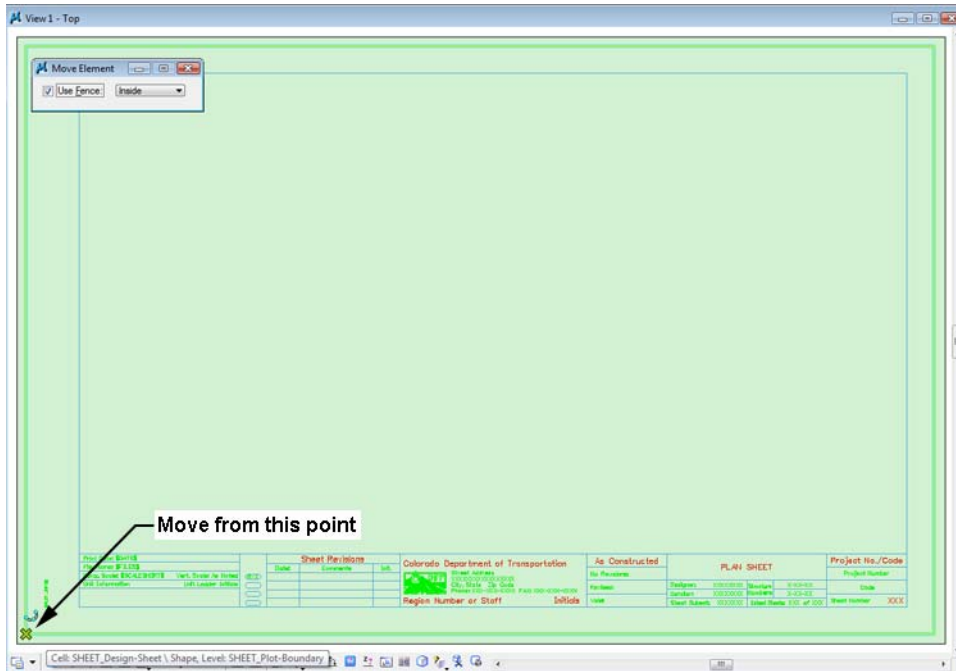
The lower left corner of the border **must** be located at the 0,0 coordinate in the file since this will be the origin of the cell. So, move it to this location.

1. Place a Fence block around the entire border.

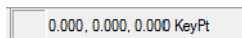
2. Select the **Move** command and toggle on **Use Fence**. Set the mode to **Inside**.



3. Snap to the lower-left corner of the yellow block (outside edge) as the move from point.



4. Key in **xy=0,0** as the move to point.
5. The border moves to the new location.
6. Reset <R>.
7. Fit the view.
8. <T> on the lower-left edge to verify it's at 0,0.

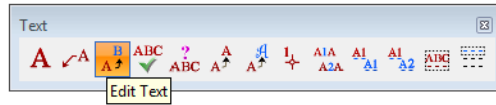


Lab 13.3 - Edit the Border Text with Project Specific Information

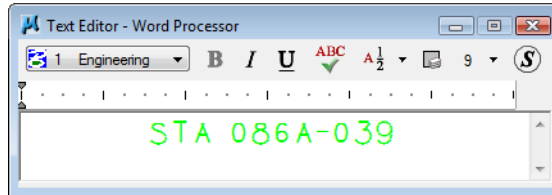
1. Zoom in on the lower-right corner of the border as shown.

PLAN SHEET			Project No./Code
			Project Number
Designer: XXXXXXXX	Structure Numbers	X-XX-XX	Code
Detailer: XXXXXXXX		X-XX-XX	
Sheet Subset: XXXXXXXX	Sheet Sheets: XXX of XXX		Sheet Number XXX

2. Select the **Edit Text** command from the **Text** toolbar.



3. <D> on the **Project Number** text.
4. In the **Text Editor**, replace this with **STA 086A-039**.



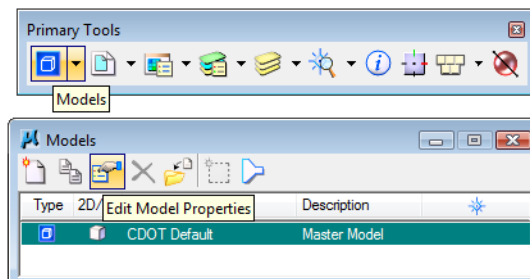
5. <D> anywhere to accept.
6. <D> on the **Code** text.
7. In the **Text Editor**, replace this with **12345** and <D> to accept.
8. Edit the **X**'s beside **Designer** and replace with your initials (CU is used in the illustration, but you can use yours).
9. <D> anywhere to accept.
10. Edit the **X**'s beside **Detailer** and replace with your initials.
11. <D> anywhere to accept.

PLAN SHEET				Project No./Code
Designer:	CU	Structure	X-XX-XX	STA 086A-039
Detailer:	CU	Numbers	X-XX-XX	12345
Sheet Subset:	XXXXXXXX	Subset Sheets:	XXX of XXX	Sheet Number XXX

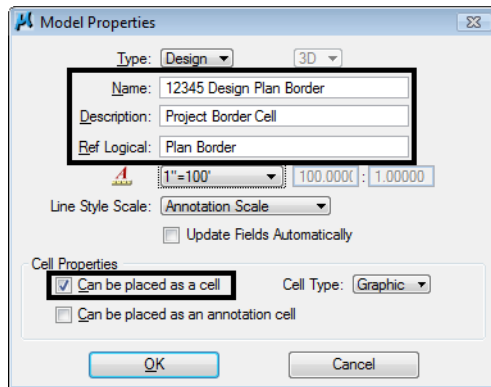
12. Fit the view.

Lab 13.4 - Make the Border a Cell

1. Select **Models** from the **Primary** toolbar.



2. In the **Models** dialog box, select **Edit Model Properties**.
3. In the **Model Properties** box:
 - ◆ Toggle on **Can be placed as cell**.
 - ◆ Change the Name to **12345 Design Plan Border**.
 - ◆ Change the Description to **Project Border Cell**.
 - ◆ For Ref. Logical key in **Plan Border**.
 - ◆ Leave all other options as shown



4. Select **OK**.
5. Close the **Models** box.
6. Save Settings (**File > Save Settings**).
7. Exit MicroStation.