

LAB 22 - Printing to a Printer

In this lab, you'll plot a single sheet to the classroom 11 x 17 printer.

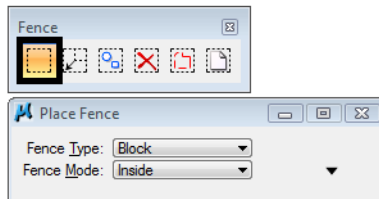
Chapter Objectives:

After completing this exercise you will know how to:

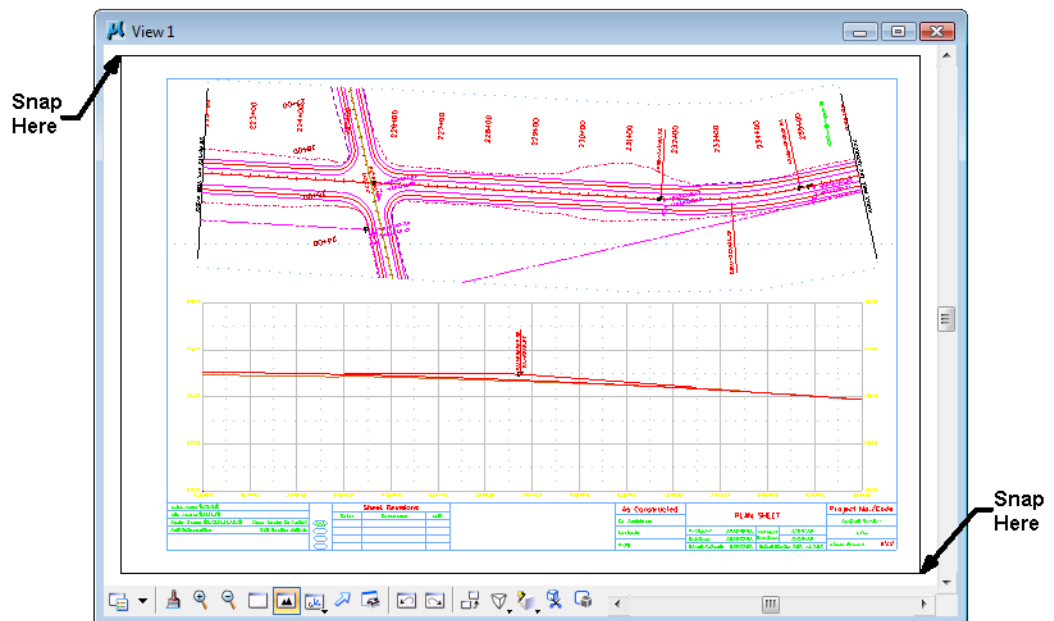
- Prepare a single sheet for printing.
- Print an 11x17 sheet to a printer.

Lab 22.1 - Prepare the sheet for plotting

1. Start MicroStation and open 12345PDES_PnP9.dgn from the project's ... \Design\Drawings folder.
2. Fit the view.
3. Use the **Edit Text** command and edit the border text to add your initials as the Designer.
4. Select **Place Fence** and set the **Fence Type** to **Block** and **Fence Mode** to **Inside**.

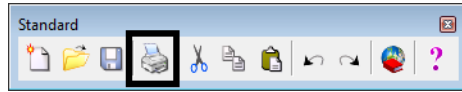


5. **Snap** (<T>, then <D>) to the corners of the outer-most shape that goes all the way around the plan and profile sheet to place the fence.

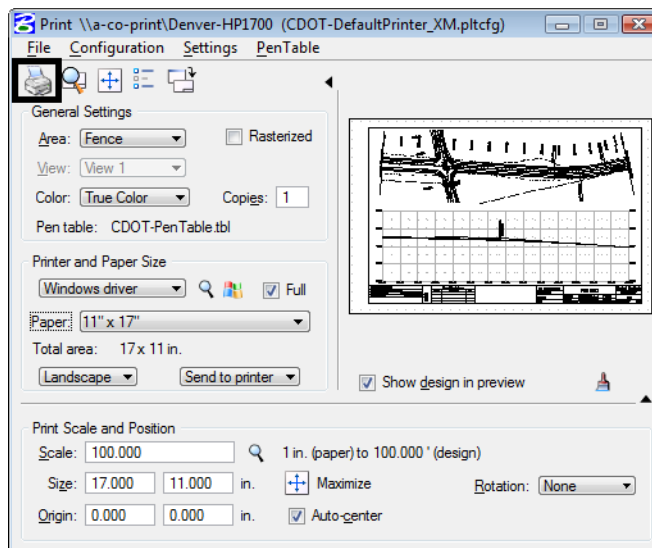


Lab 22.2 - Print the sheet (classroom printer)

1. Select **File > Print** or choose the **Print** icon from the **Standard** toolbar.



2. From the Print dialog box, select **File > Select Windows Printer** and double-click on the **Denver-HP1700** printer. .
3. Set the dialog as shown here. Be sure to set the **Print Scale** to **100**.



4. Select the **Print** icon or **File > Print**.

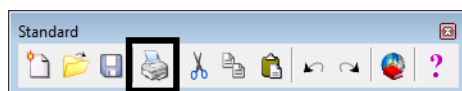
The file is printed to the 11x17classroom plotter.

Note: For tips on printing raster references (e.g. aerial photos), see the workflow **Printing Raster Images**.

5. Do not exit. Keep MicroStation open for the final plotting exercise.

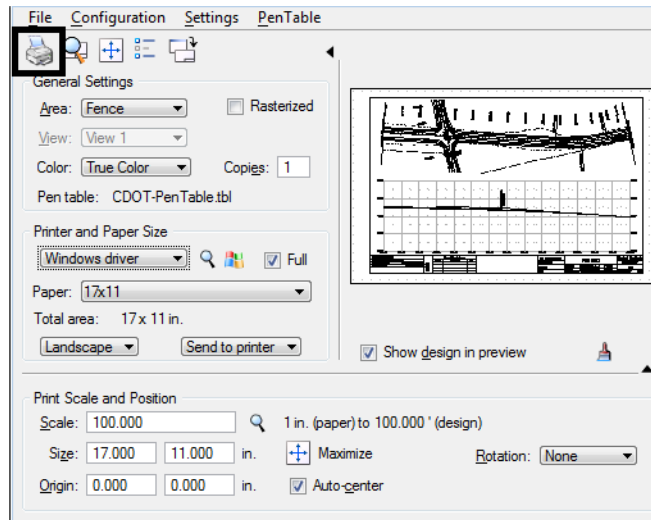
Lab 22.3 - Print the sheet (CDOT workflow)

1. Select **File > Print** or choose the **Print** icon from the **Standard** toolbar.



2. If prompted, select **CDOT-DefaultPrinter_XM.pltcfg** for the print driver, and then select **OK**.

3. Set the dialog as shown here. Be sure to set the **Print Scale** to 100.



4. Select the **Print** icon or **File > Print**.

Note: For tips on printing raster references (e.g. aerial photos), see the workflow **Printing Raster Images**.

5. Do not exit. You'll keep MicroStation open for the final plotting exercise.

Optional Exercise

1. Open the 12345BRDG_Plan01.dgn file from the project's ... \Bridge \Drawings folder.
2. Plot the sheet to the classroom printer. Be sure to set the **Print Scale** to 40.
3. Do not exit. You'll keep MicroStation open for the final plotting exercise.

