

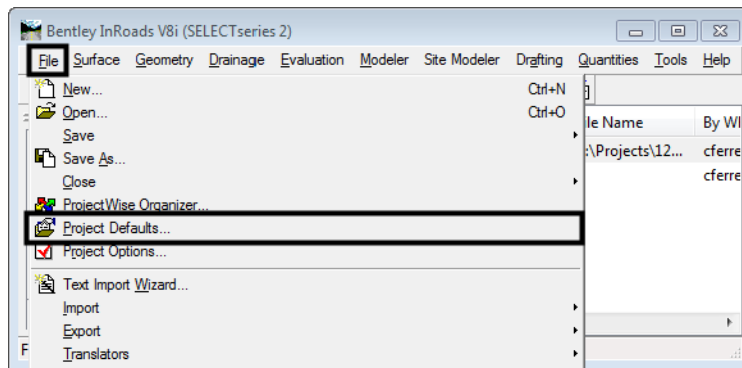
Workflow IR 1 - InRoads V8i Project Defaults Management

This document describes the set-up procedure InRoads Project Defaults in the V8i version of the software. InRoads project defaults perform two functions; firstly they load the appropriate CDOT standard resource files such as the standard XIN file, annotation resources, XML style sheets, etc. Additionally they define default paths to project specific directory folders that contain project data such as DTM's, alignments, survey data, etc.

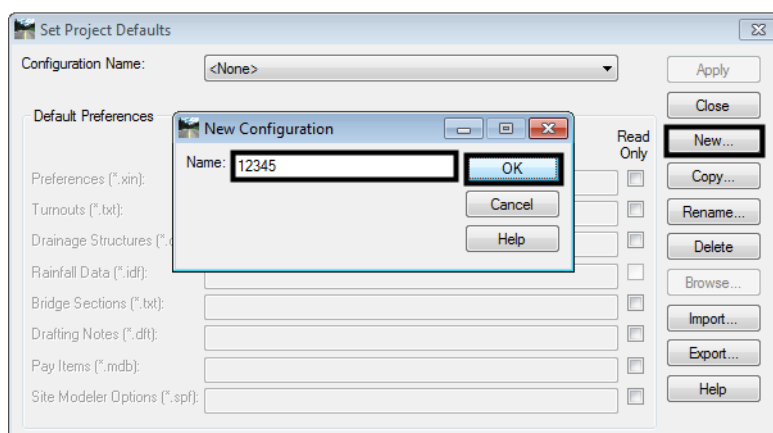
Setting Up Project Defaults

To set up a Project Default:

1. Launch InRoads V8i.
2. select **File>Project Defaults** from the InRoads menu bar.



3. Click on the **New** button.
4. In the **New Configuration** dialog box, key in the desired **Project Code**.
5. <D> **OK** to accept the key-in and dismiss the **New Configuration** dialog box.



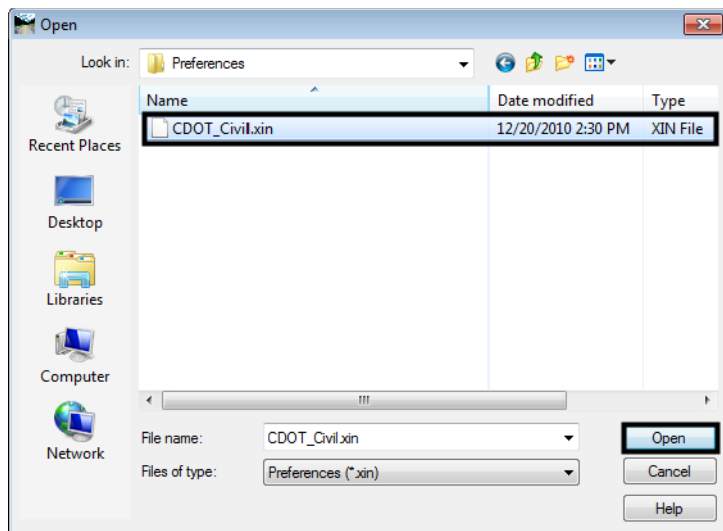
This activates the **Set Project Defaults** dialog box so that it can be edited.

6. <D> in the **Preferences (*.xin)** field then <D> the **Browse** button.

- Browse to:
C:\Workspace\Workspace-CDOT_V81\Standards-Global\InRoads\Preferences

Note: If you are logged into ProjectWise, the ProjectWise browser will be displayed. <D> the **Cancel** button to dismiss it and display the (local) file Browser.

- Select the file: *CDOT_Civil.xin*

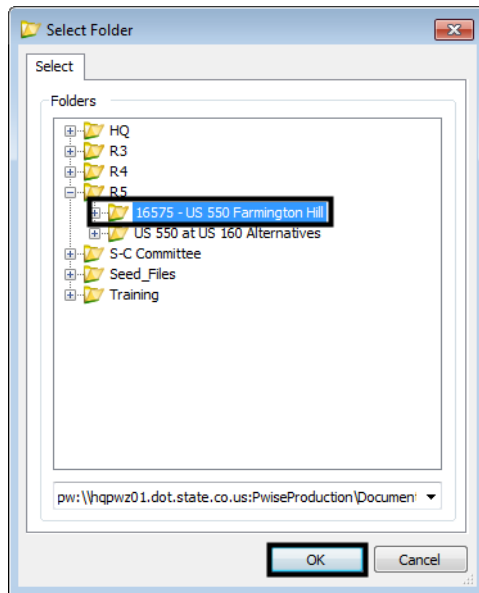


- <D> in the **Drafting Notes (*dft)** field then <D> the **Browse** button.
- Browse to:
C:\Workspace\Workspace-CDOT_V81\Standards-Global\InRoads\Notes.
- Cancel** the ProjectWise browser if necessary.
- Select the file: *CDOT-Notes.dft.*

This completes the Default Preferences part of the dialog box. Next the directory paths are filled in. If your project data resides on the ProjectWise server, fill in only the ProjectWise Directory field.

- <D> in the **ProjectWise Directory** field.
- <D> the **Browse** button. This displays the ProjectWise **Select Folder** dialog box.
- Navigate to the desired folder and highlight it.

16. <D> the **OK** button to select the folder and dismiss the **Select Folder** dialog box.

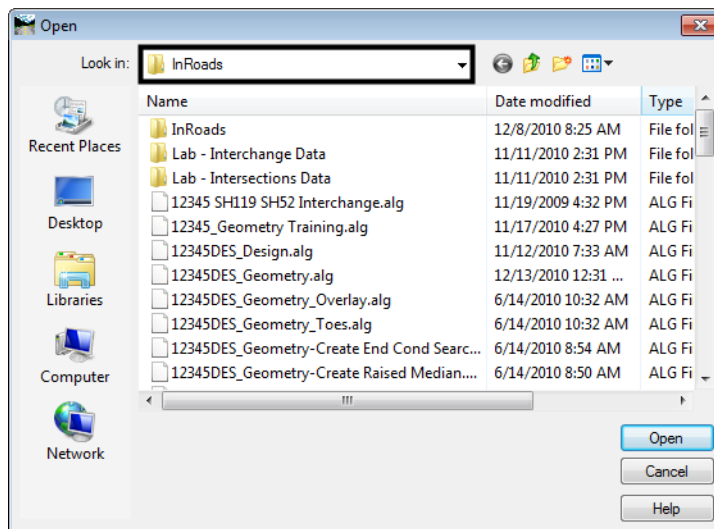


If the project data is stored locally, then the fields below the ProjectWise Directory field should be used.

17. <D> in the **Project Default Directory** field.

18. <D> the **Browse** button. This displays the **Open** dialog box.

19. Navigate to the desired folder then <D> the **Open** button.



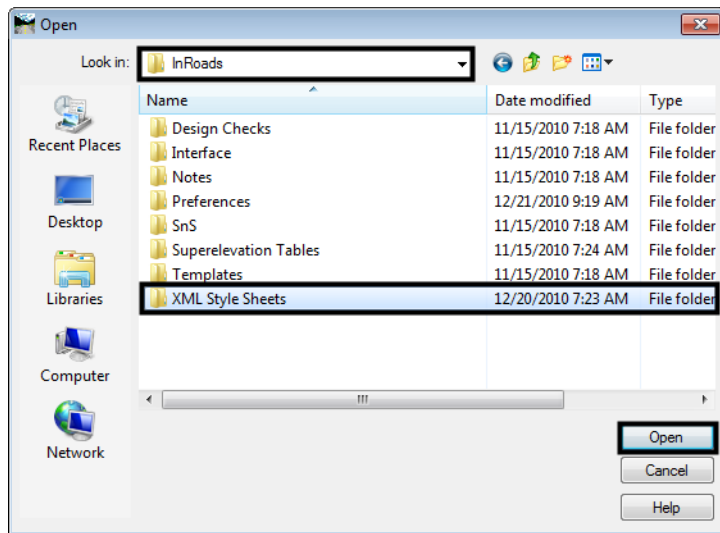
Note: Typically, the **Projects (*.rwk)**, **Surfaces (*.dtm)**, **Geometry Projects (*.alg)**, **Template Libraries (*.itl)**, and **Roadway Design (*.ird)** will use the same directory path as the **Project Default Directory**. Therefore, you do not have to fill in those fields unless they are different than the **Project Default Directory**.

The path to the Style Sheet directory should be set for both ProjectWise and locally stored projects.

20. <D> in the **Style Sheet (*.xsl)** field.
21. <D> the **Browse** button. This displays the *Open* dialog box.
22. Navigate to the following directory:

C:\Workspace\Workspace-CDOT_V8i\Standards-Global\InRoads\XML Style Sheets

23. <D> the **Open** button.

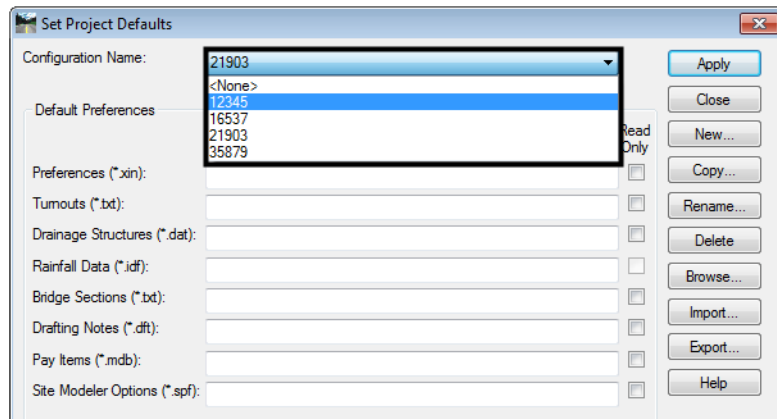


24. Once the desired fields are filled in, <D> the **Apply** button to accept the changes.

The Project Defaults are now active and will be used when opening and saving files.

Setting Project Defaults

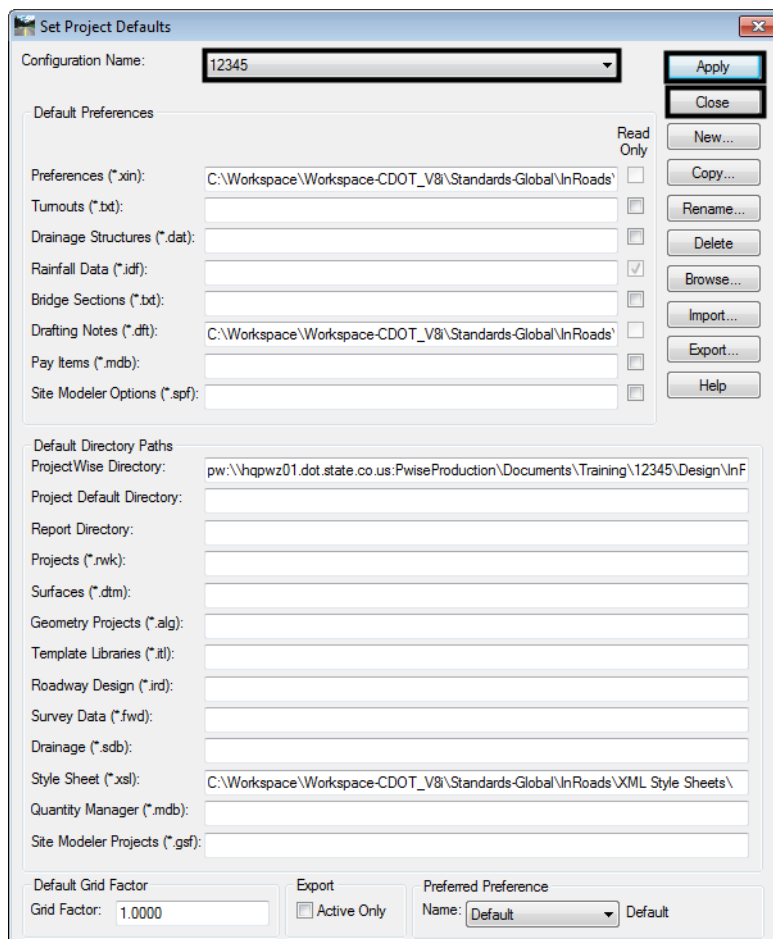
1. Users can use the *Configuration Name* field to choose the appropriate Project Defaults for the project .



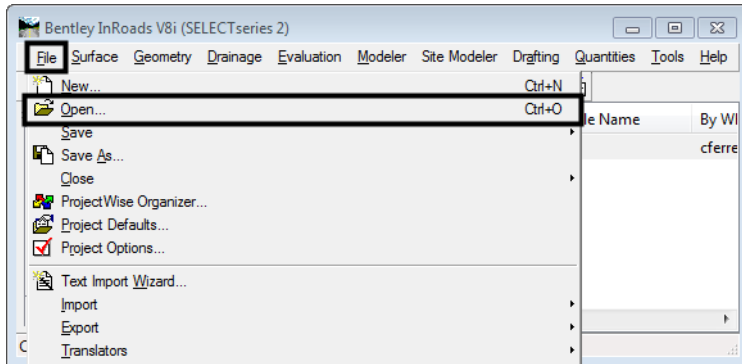
Using Project Defaults Example

The following example demonstrates the benefits of using project defaults. Here, the project data is stored onProjectWise.

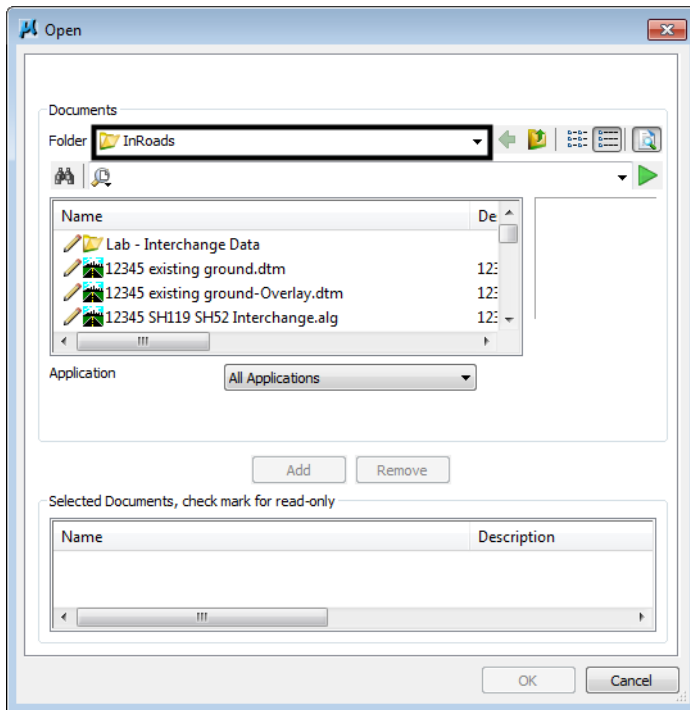
1. Open InRoads.
2. Select File > Project Defaults.
3. In the **Set Project Defaults** dialog box, select any discipline from the **Configuration Name** drop-down list. Then Select the **Apply & Close** buttons.



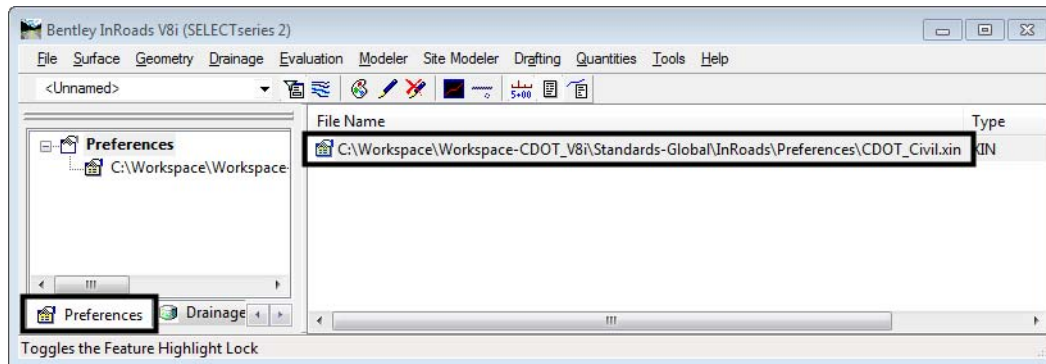
4. From the InRoads interface, select **File>Open**



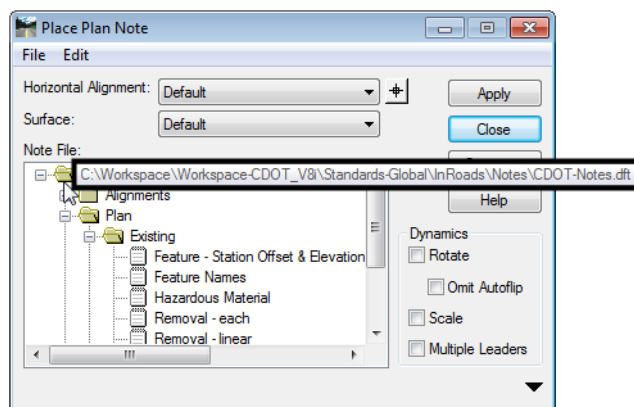
Notice that the ProjectWise **Open** dialog box is already set to the default directory specified in the Project Defaults.



5. Select the **Preferences** tab at the bottom of the InRoads Explorer. Notice that the default CDOT xin file is loaded.



6. Select **Drafting > Place Plan Note** from the InRoads main menu.
7. Notice that the **CDOT-Notes.dft** file is loaded here.



8. Select **Tools > View XML Reports** from the InRoads Main menu.
9. In the Bentley InRoads Report Browser, notice that the Style Sheet folder is located within the CDOT workspace.

