

# Workflow MP 1- MicroStation Printing

This document guides you through the basic functions of MicroStation printing. It is used for printing single sheets on a sheet by sheet basis. See workflow document *CDOT Workflow Print Organizer* for guidance on printing multiple sheets at one time.

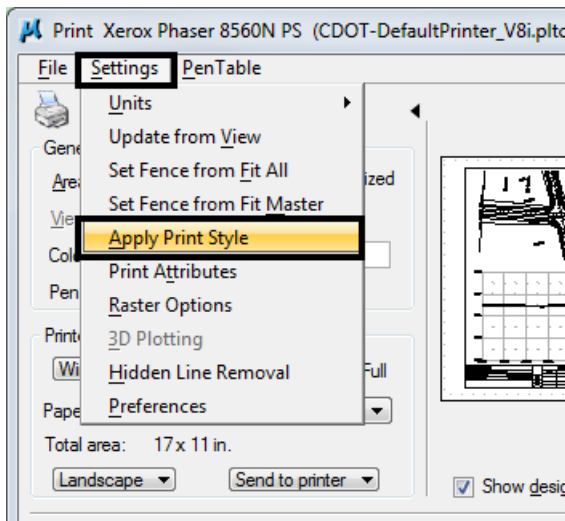
There are two procedures that can be used to set printing properties. The first is using a **Print Style** (new in MicroStation V8i SS2) and the second is using a **Print Driver** (similar to past versions of MicroStation).

**Note:** Mixing the two printing procedures is known to create some inconsistencies. If you find that something does not look correct, it is best to cancel out of the Print dialog box and start over using only one of the procedures.

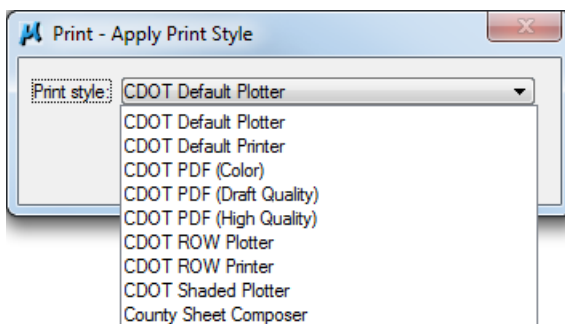
## Using Print Styles

A Print Style is a collection of frequently used print properties that have been saved for later use. Default CDOT Print Styles have been created for common settings and are included in the CDOT workspace. These Print Styles automatically set a Printer Driver, Pen Table, scale, page size of 11x17 landscape orientation, toggles on line styles and line weights, and sets the printer.

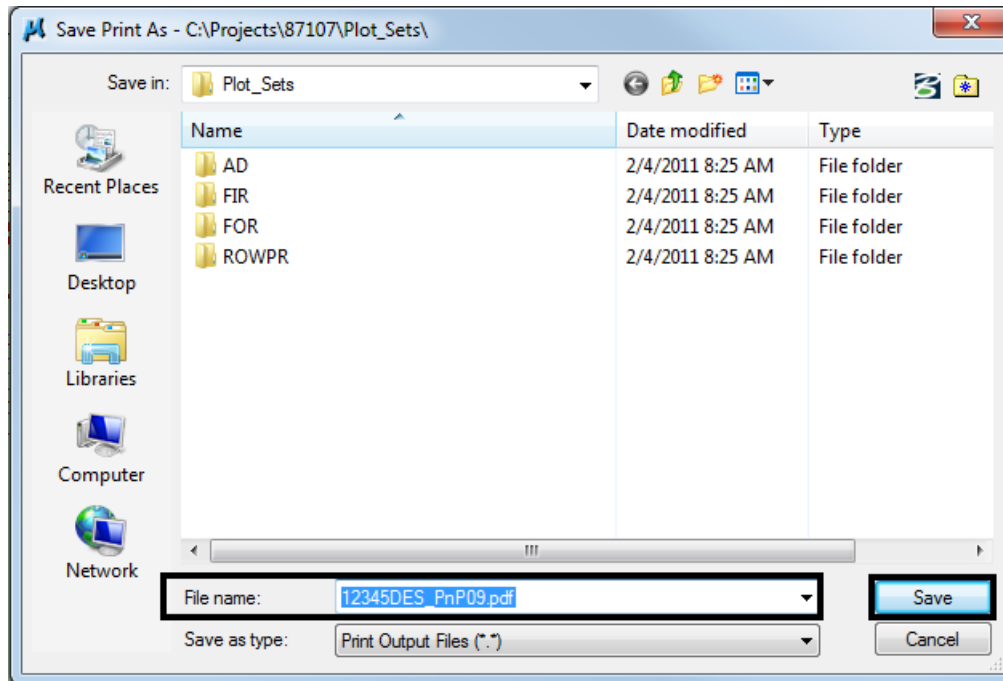
1. Print Style settings are accessed from the **Print** dialog box.
2. From the **Settings** pull down menu, select **Apply Print Style**.



3. Nine Print Styles have been created. Two drivers have been created for default Adobe PDF file creation; one for draft quality and one for high quality outputs.



4. Select a Print Style and <D> **OK**. This will automatically set the appropriate print settings.
5. <D> the **printer icon** or use **File > Print** to print the document.
6. If a Print Style was selected for a printer or plotter, the file will be sent to the device.
7. If a Print Style was selected for Adobe PDF creation, the user will be asked to name the file and save it. Navigate to the correct directory and enter a file name to save the file. Select **Save**.



**Note:** For tips on printing raster references (e.g. aerial photos), see the workflow **Printing Raster Images**.

## Using Default Printer Driver Settings

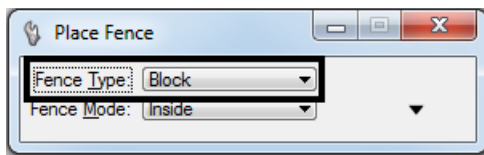
**Note:** When using this method of printing, it is important to check the line weight setting under the print attributes to make sure it is toggled on before creating a plot.

1. In MicroStation V8i, place a fence to define the print area.

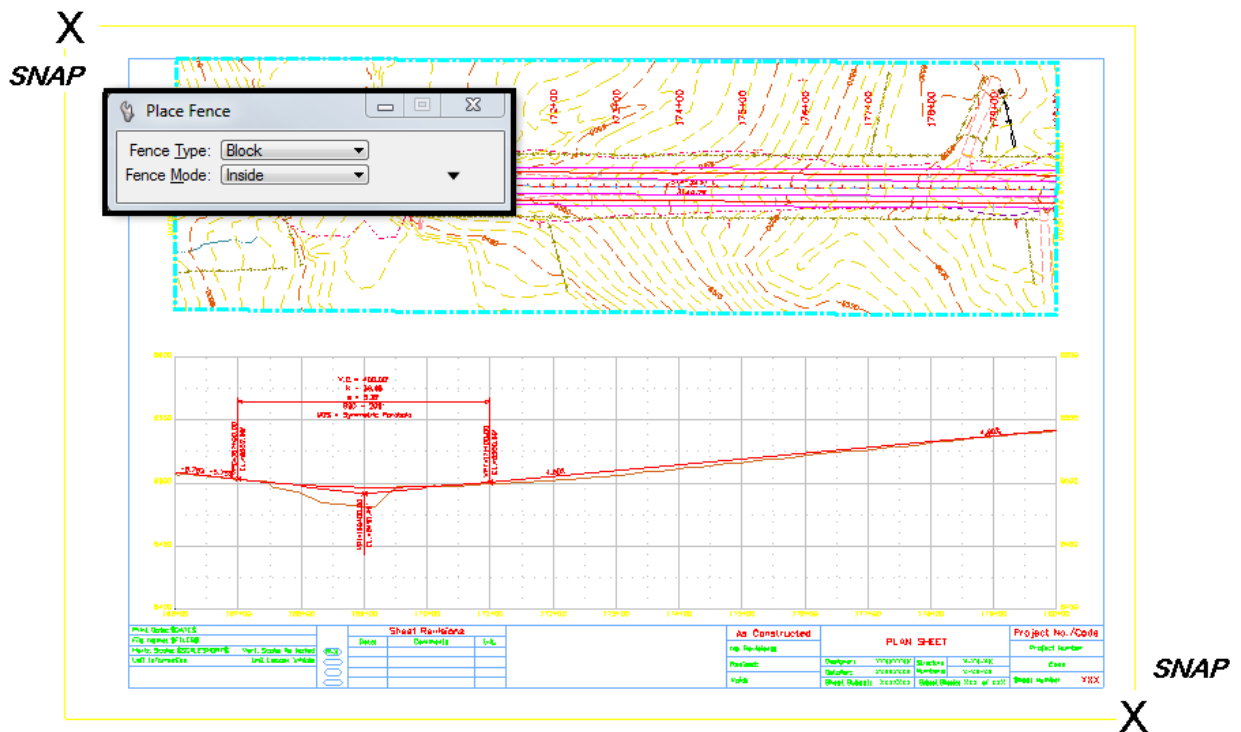


**Note:** As of this printing if you place the fence BEFORE activating the Print command, the line weight toggle will be turned off. This will be fixed in the next service pack (SS3) from Bentley due out in the fall of 2011.

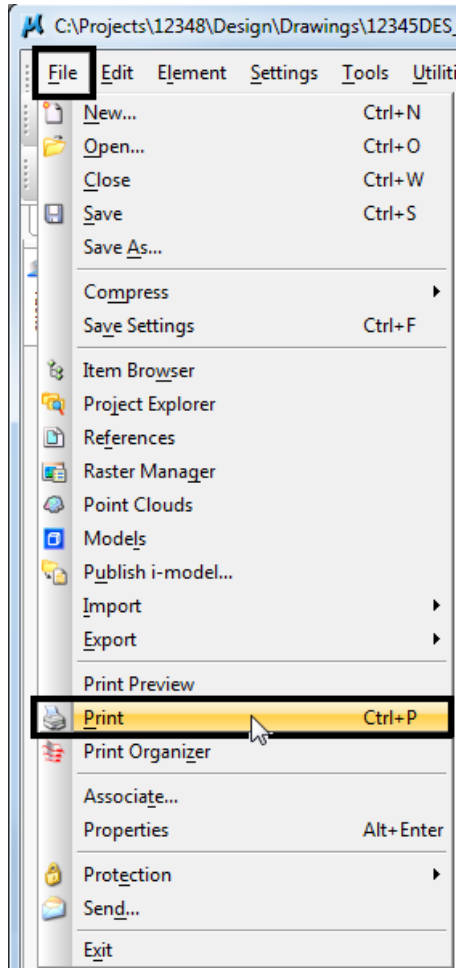
- Set the **Fence Type** to **Block**. This **Fence Type** will work for both sheet borders placed as reference files and as cells.



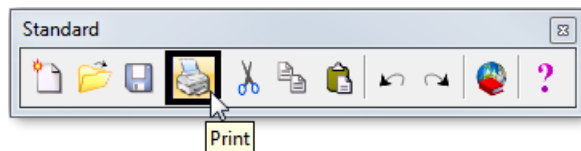
- Place the fence by snapping to the outer corners of the plot boundary. The shape defining the outer edge of the border (in this example) is called SHEET\_Plot-Boundary.



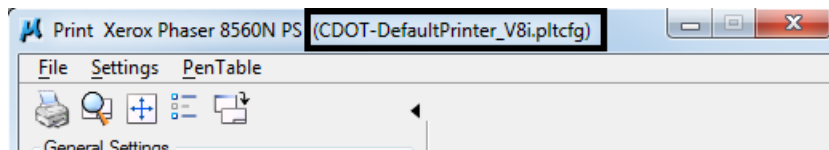
- Open the **Print** dialog box by selecting **File > Print**.



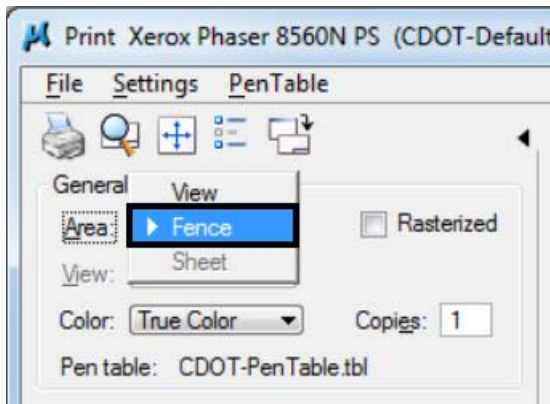
- Optionally, <D> the **Printer** icon on the **Standard Tool Box**.



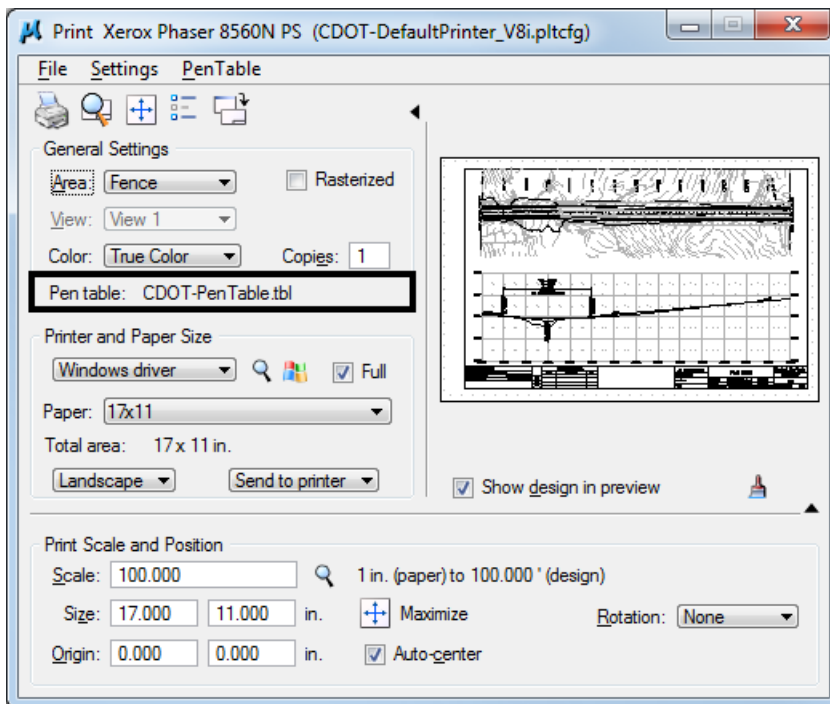
- The current **Printer Driver** will display in the title bar at the top of the **Print** dialog box.



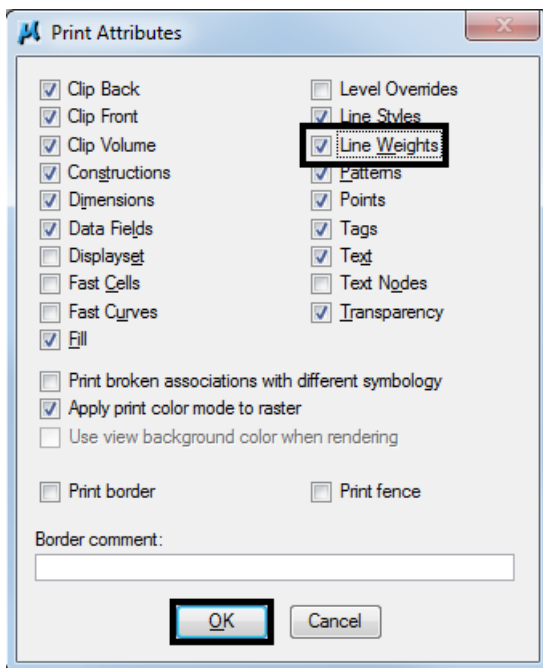
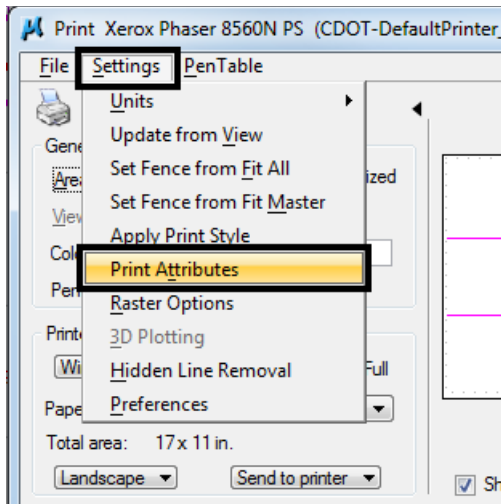
7. Make sure the **Fence** option is selected under **General Settings**.



8. The current **Pen Table** will display under the **General Settings** area of the dialog box.



9. If these settings are correct (default printer using CDOT-PenTable.tbl), check to make sure pen weights have been toggled on under the **Settings > Print Attributes** pull down.

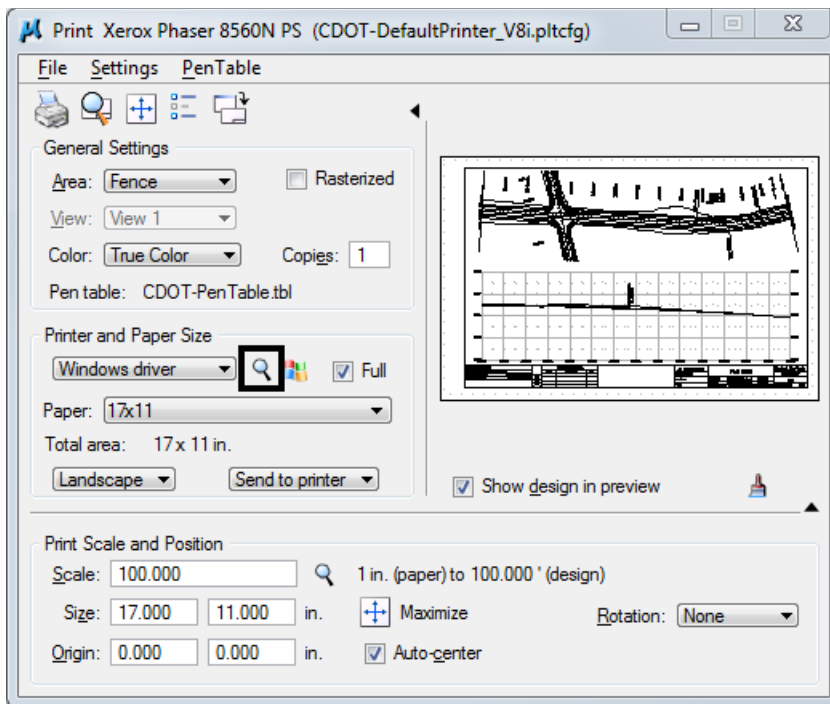


10. Once toggled on, <D> **OK** to close the Print Attributes dialog box.
11. <D> the **printer icon** or use **File > Print** to print the document to the default printer.

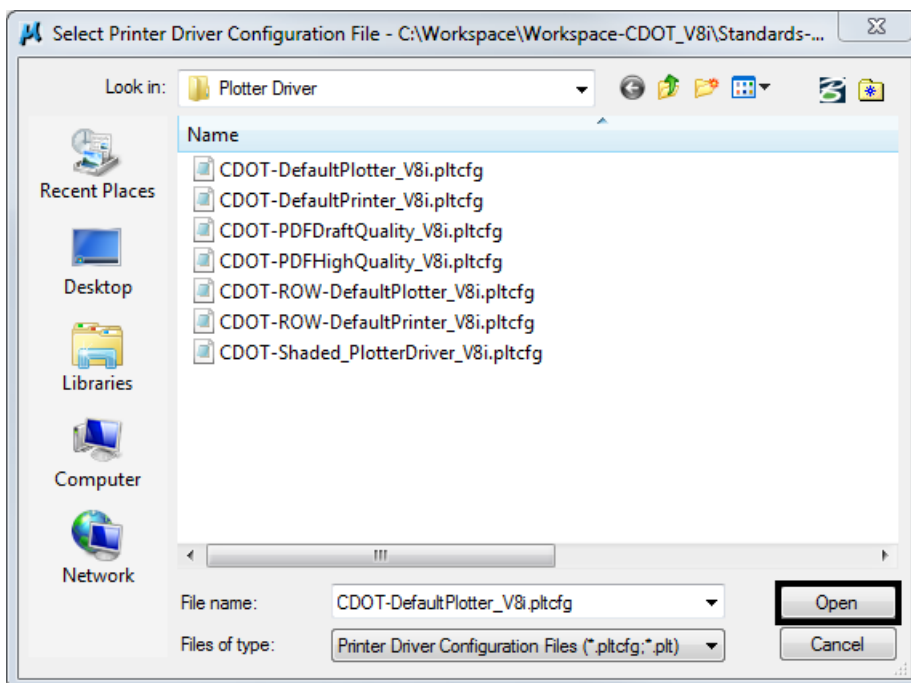
## Changing the Default Printer Driver Settings

Seven default CDOT printer drivers have been created for common settings and are included in the CDOT workspace. Settings like Pen Table can be changed by the user. Follow the same steps in the above section **Using Default Printer Driver Settings** to start the printing workflow.

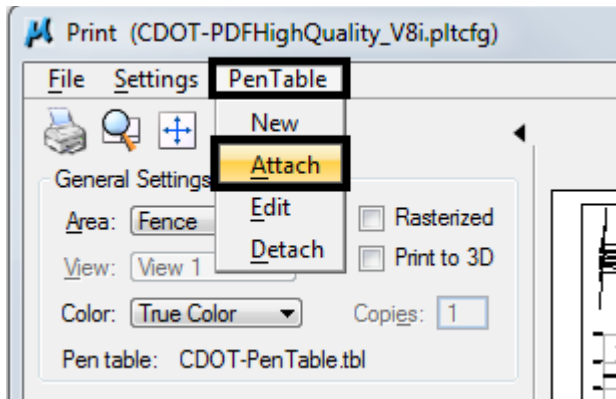
1. The default printer driver sets the *CDOT-DefaultPrinter\_V8i* printer driver. To change this, <D> the magnify glass icon under the Printer and Paper Size section in the print dialog box.



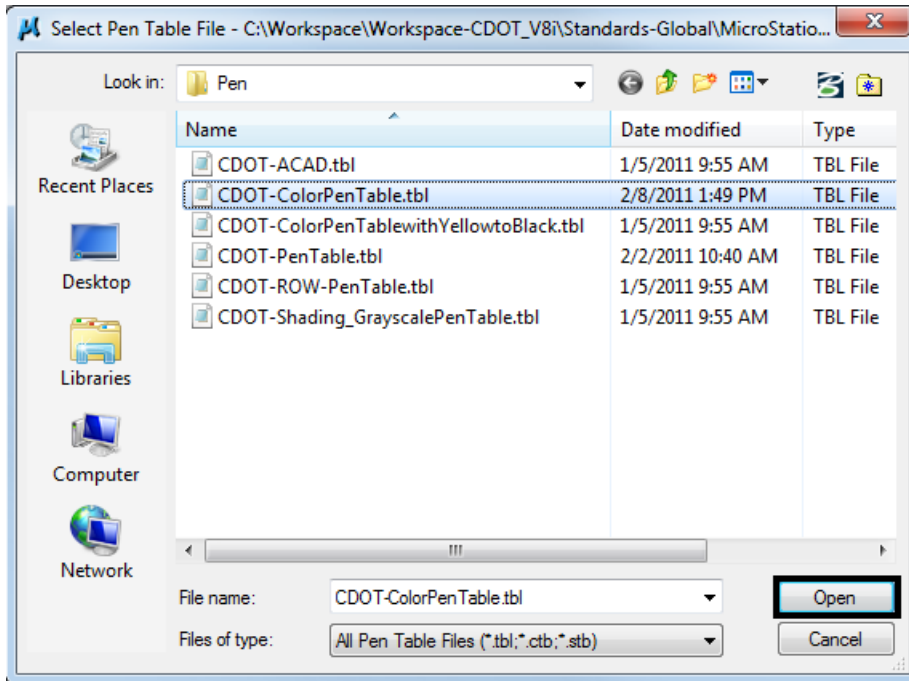
2. Select the appropriate **Printer Driver** (for example, *CDOT-PDFHighQuality\_V8i.pltcfg*) and <D> **Open**.



3. Check the **Pen Table** setting. If it needs to be changed (for example to the color pen table), select the **PenTable** pulldown and <D> **Attach**.

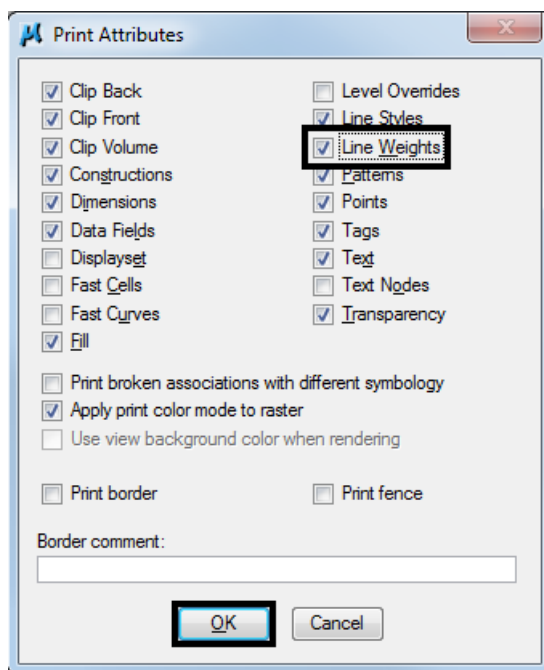
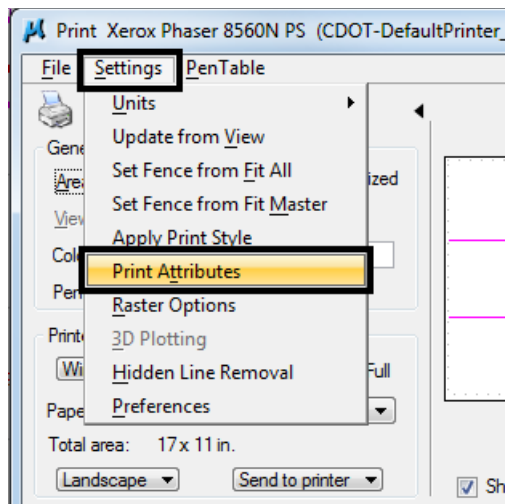


4. Select the appropriate pen table and <D> **Open**.





- Once the settings are correct, check to be sure pen weights have been toggled on under the **Settings > Print Attributes** pull down.



- Once toggled on, <D> **OK** to close the Print Attributes dialog box.
- <D> the **printer icon** or use **File > Print** to print the document to the default printer.

