

State of Colorado
Department of Transportation



**CDOT OpenRoads Designer Workspace
Installation Guide**

October 2020

CDOT ORD Frequently Asked Questions

What is the CDOT OpenRoads Designer (ORD) Workspace?

The CDOT ORD Workspace is Colorado Department of Transportation's Workspace files for the Bentley OpenRoads Designer Connect Edition software. The CDOT ORD Workspace contains resources, standards and tools necessary for designing projects in accordance with CDOT Standards.

Note: The current CDOT ORD Workspace is not complete and will continue to be changed and modified as needed.

What version of OpenRoads Designer is the CDOT Workspace certified for?

The CDOT ORD Workspace is currently certified for use with **OpenRoads Designer Connect Edition, Version 10.08.01.33**.

What is the most current version of the CDOT Workspace?

CDOT ORD Workspace_10.08.01.33-01.0_100520. Released on October 5th, 2020.

What Do the CDOT Version Numbers Mean?



How do I install the CDOT ORD Workspace?

There are 2 methods for installing OpenRoads Designer and the CDOT Workspace. The Workspace files/standards can be installed as a (1) local copy to an individual users' machine using the Default OpenRoads Designer install path or (2) installed/stored on a server location or other local folder. It is important to decide which type of installation you want and follow the instructions for installation carefully. Please read this Installation Guide before beginning the installation process.

Can computers have both SS4 and ORD loaded?

Yes, there is no requirement to remove SS4. Both can be installed and co-exist on the same machine.

Is there Bentley training available for OpenRoads Designer CE?

Yes. The Bentley LEARN site has training for OpenRoads Designer Connect Edition and other Connect Edition applications.

Where can the Workspace ReadMe file be found?

The ReadMe is delivered with the Workspace and is found in the *Configuration* Folder.

CDOT Workspace Installation Guide

Installing OpenRoads Designer and the CDOT Workspace:

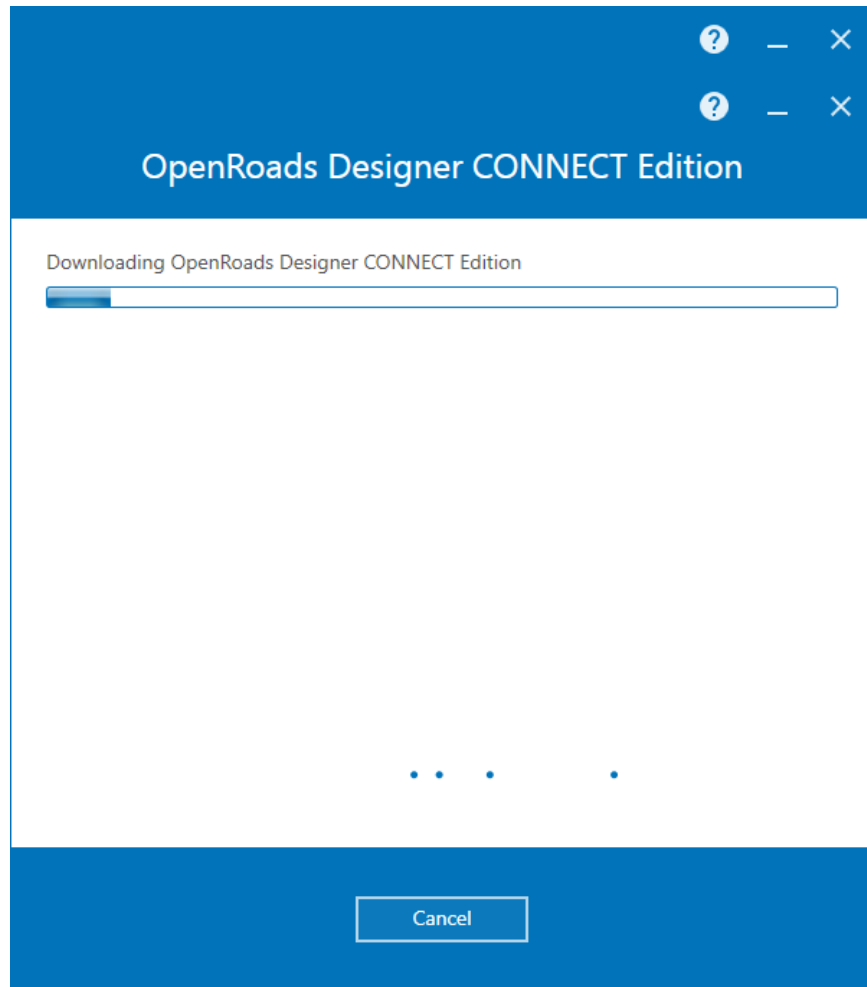
This guide provides steps for installing the OpenRoads Designer (ORD) CONNECT Edition software and the CDOT ORD Workspace. OpenRoads Designer can be installed/configured 2 different ways: (1) to the users local machine, using the *Default Bentley Configuration Path* -OR- (2) to a server location or any other desired path, using a *Custom Configuration Path*. (**NOTE:** For Information on how to install OpenRoads Designer to a Custom Configuration skip to the section below, titled: [Installing OpenRoads Designer; Custom Configuration.](#))

The first 2 sections will cover installing the OpenRoads Designer software and Section 3 will cover installing the CDOT Workspace.

Section 1: (Option 1) Installing OpenRoads Designer; Local Users Machine/Bentley Default Configuration:

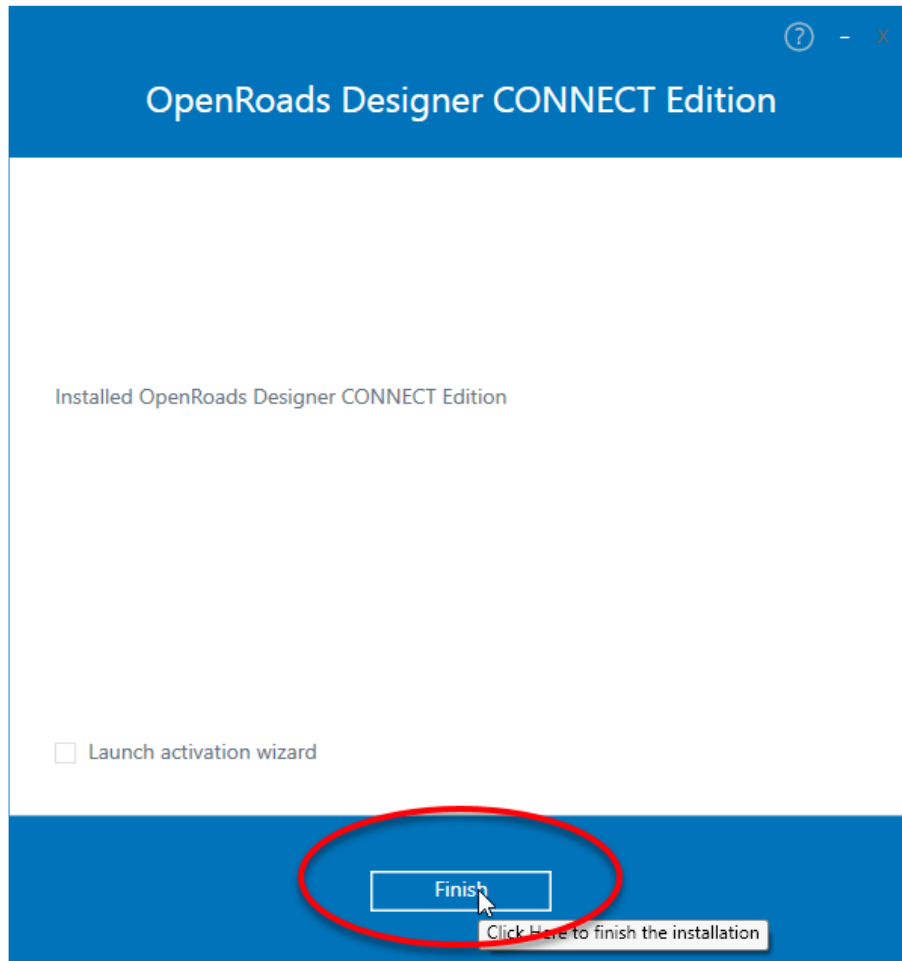
NOTE: If OpenRoads Designer is already Installed, skip to the section, titled [Installing the CDOT ORD Workspace](#) to install the CDOT Workspace.

1. Download **OpenRoads Designer CONNECT Edition v10.08.01.33** from the Bentley Software Center.
2. Launch the installer (.exe) for Bentley OpenRoads Designer Connect Edition by right-clicking on the previously downloaded executable (*Setup_OpenRoadsDesignerv64_10.08.01.33.exe*) file and selecting **Run As Administrator**.
3. On the first page of the Installation Wizard, toggle on any desired additional *Companion Features* or *Applications* and the *End User License Agreement* option and select **Install**.



4. Wait patiently as OpenRoads Designer CONNECT Edition installs.

5. Upon Completion, select **Finish**.



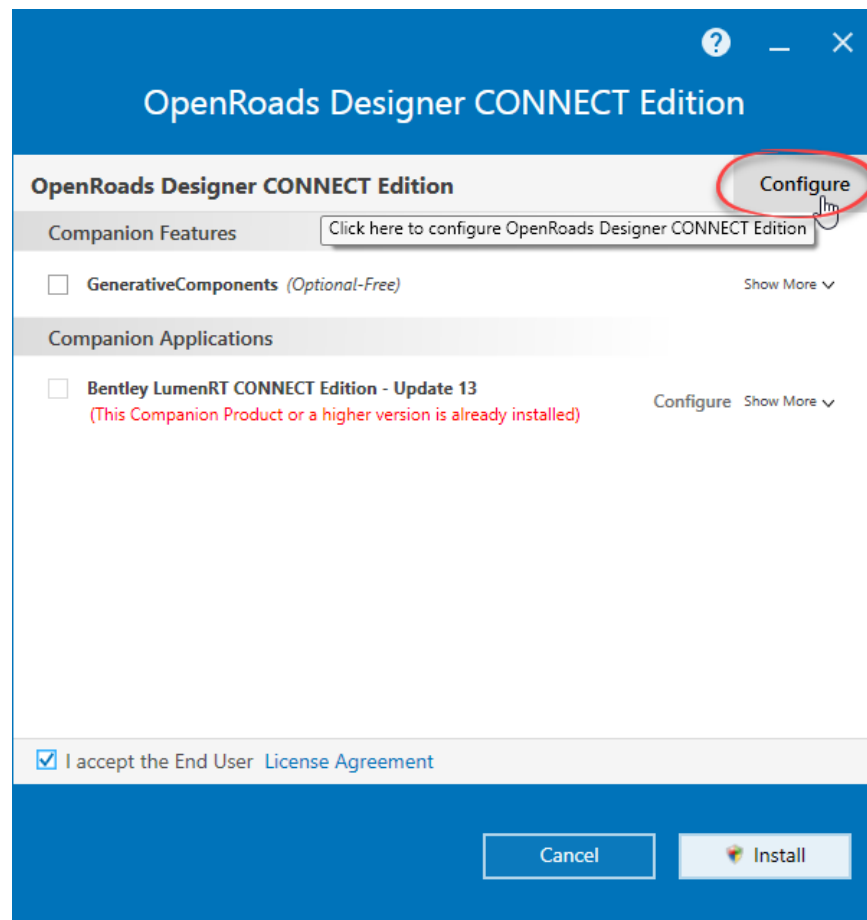
NOTE: The Bentley Default Installation Path is **C:\ProgramData\Bentley\OpenRoads Designer CE\Configuration**

Section 2: (Option 2) Installing OpenRoads Designer; Custom Configuration:

This section provides steps for installing the **CDOT OpenRoads Designer Workspaces** on a server or any other custom location that could be accessed by multiple users.

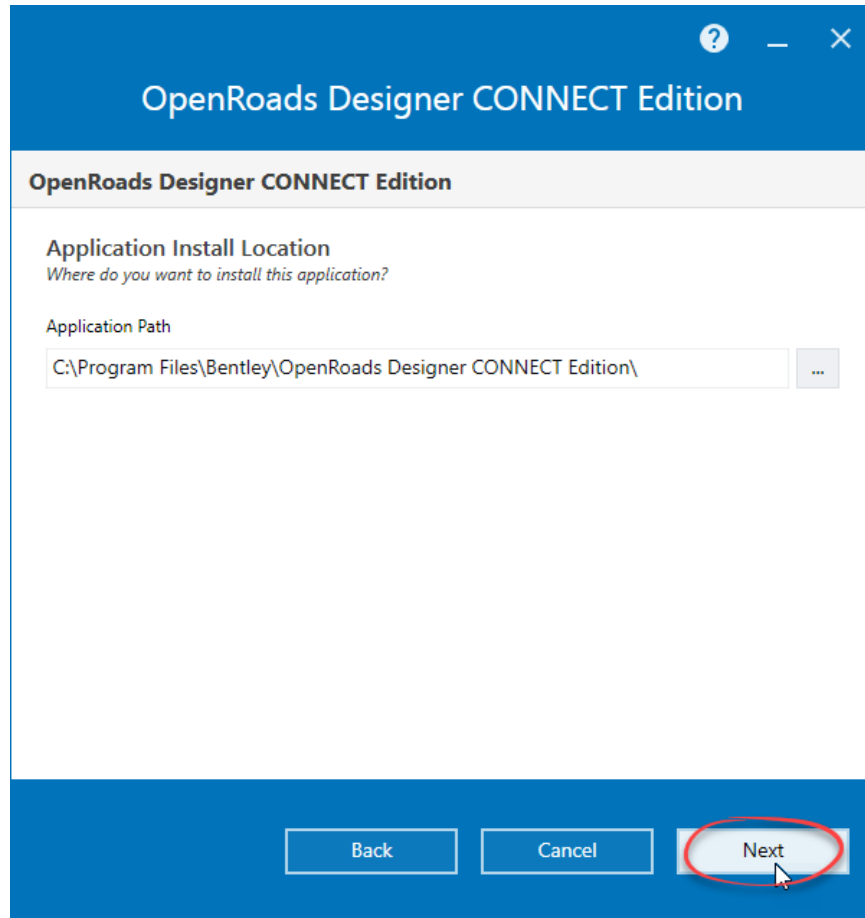
NOTE: *If you have already installed OpenRoads Designer on your machine and used the default install path but would like to change to a Custom Configuration, skip to the section below, titled: [Manually Setting up a Custom Configuration](#).*

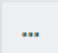
1. Download **OpenRoads Designer CONNECT Edition v10.08.01.33** from the Bentley Software Center.
2. Launch the installer (.exe) for Bentley OpenRoads Designer Connect Edition by right-clicking on the previously downloaded executable (*Setup_OpenRoadsDesignerx64_10.08.01.33.exe*) file and selecting **Run As Administrator**.
3. On the first page of the Installation Wizard, select **Configure** from the top right corner of the dialog.

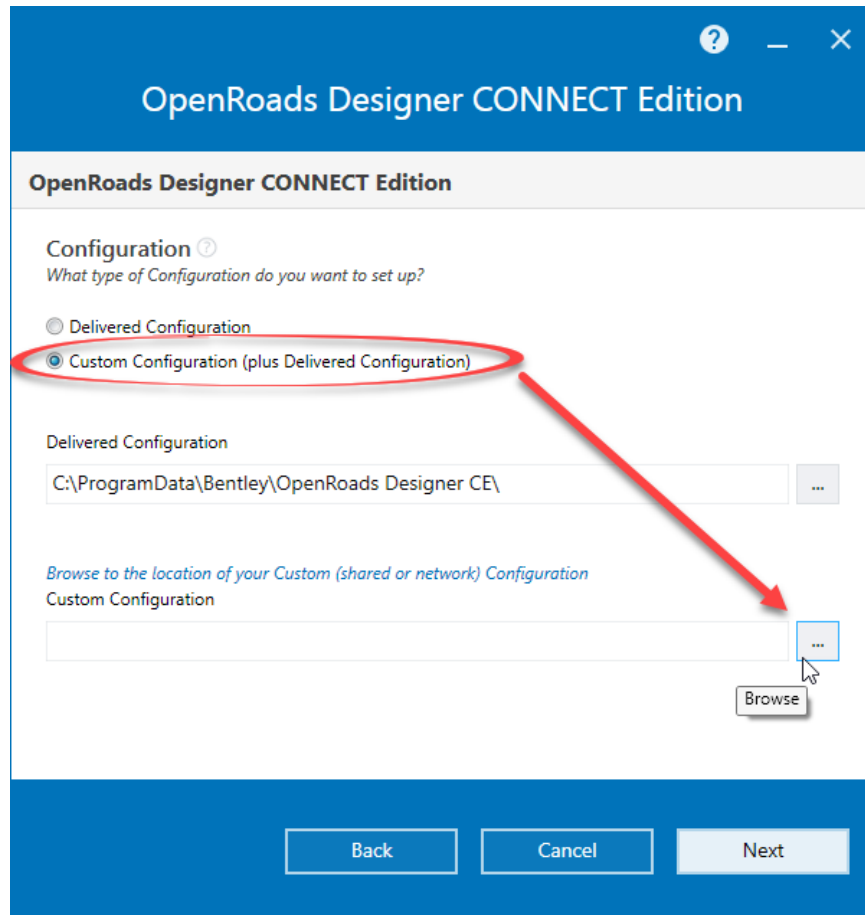


4. The Application Install Location dialog appears. Do not change the *Application Path*. Select **Next**.

NOTE: *The Application Path can be changed if desired but is not necessary.*



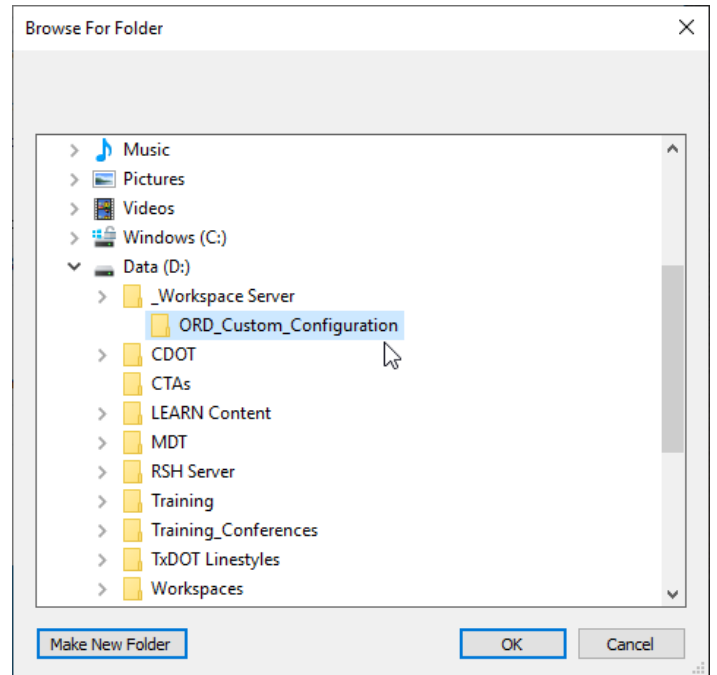
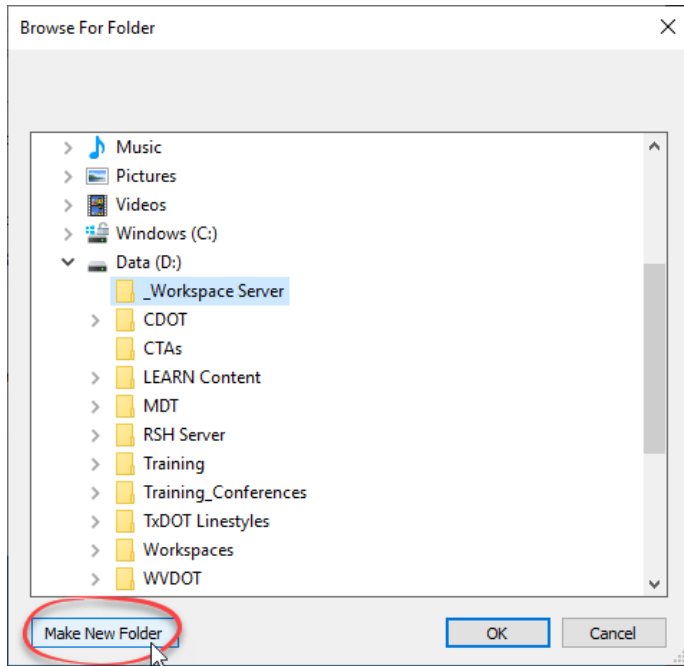
5. The Configuration dialog appears. Select the **Custom Configuration (plus Delivered Configuration)** option. Then select the  button to browse and create the folder in which you will install the *CDOT ORD Workspace* after completing the installation of OpenRoads Designer.



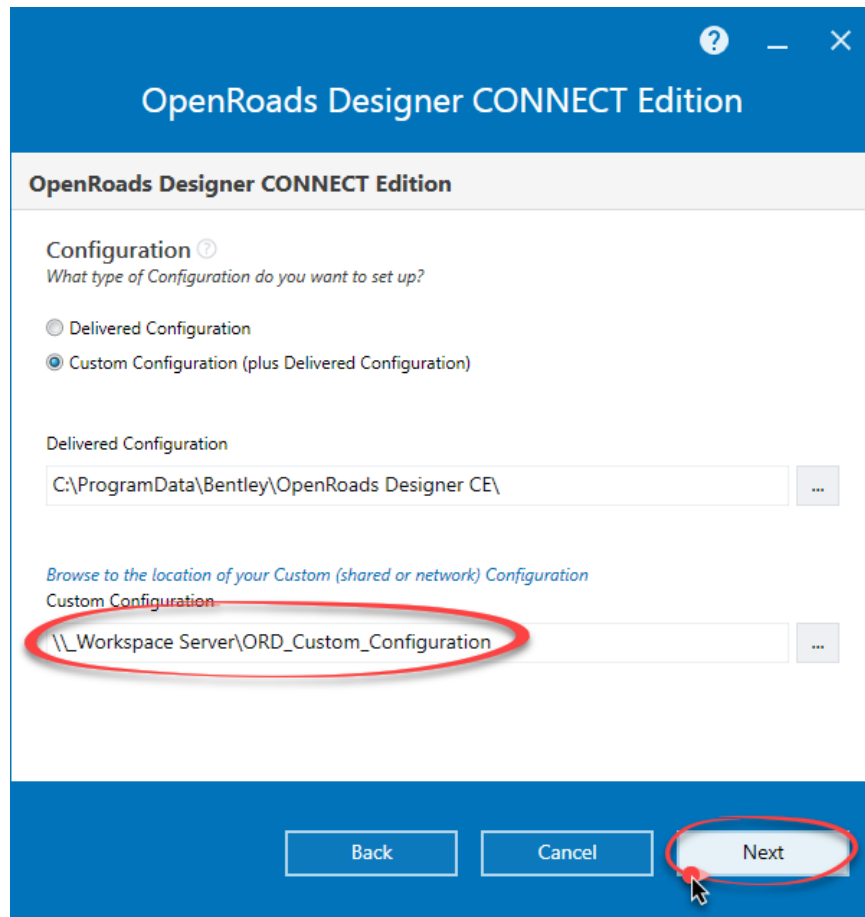
6. Browse to the desired server location you want the *CDOT ORD Workspace* to reside and select **Make New Folder**. Create a folder called **ORD_Custom_Configuration**.

NOTE: The folder name can be any name desired. It is not required that the name of the folder be *ORD_Custom_Configuration*. This is the name being used for the purpose of this document.

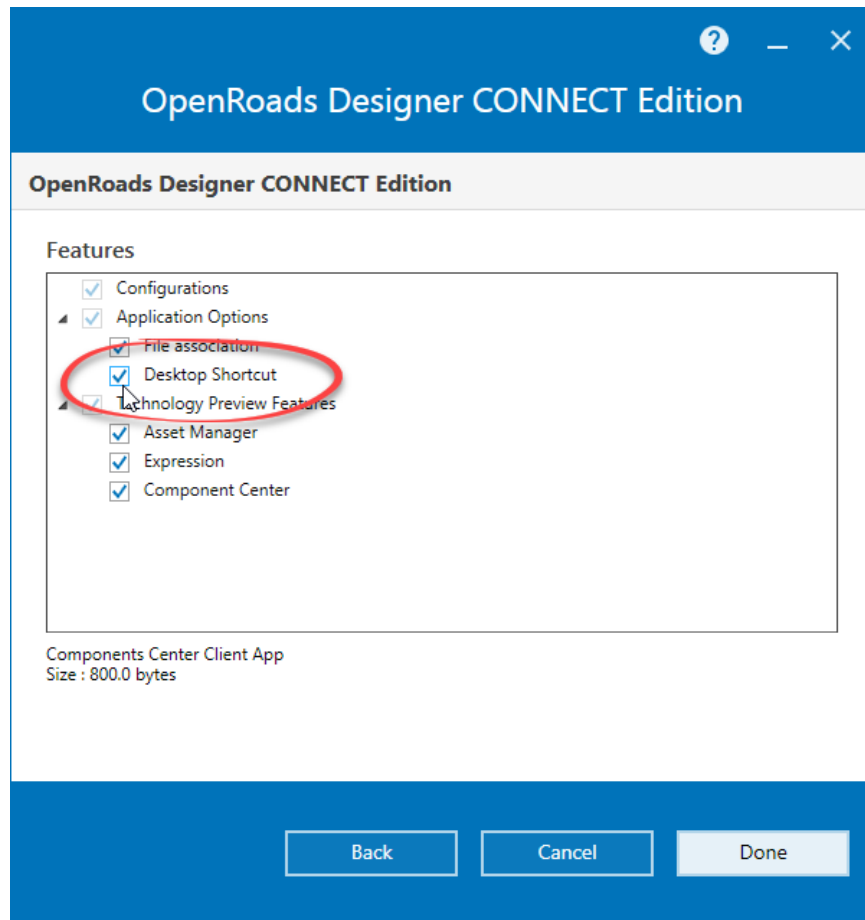
7. Select the new Configuration folder, *ORD_Custom_Configuration*, and click **OK** to accept your server location selection and close the *Browse For Folder* dialog.



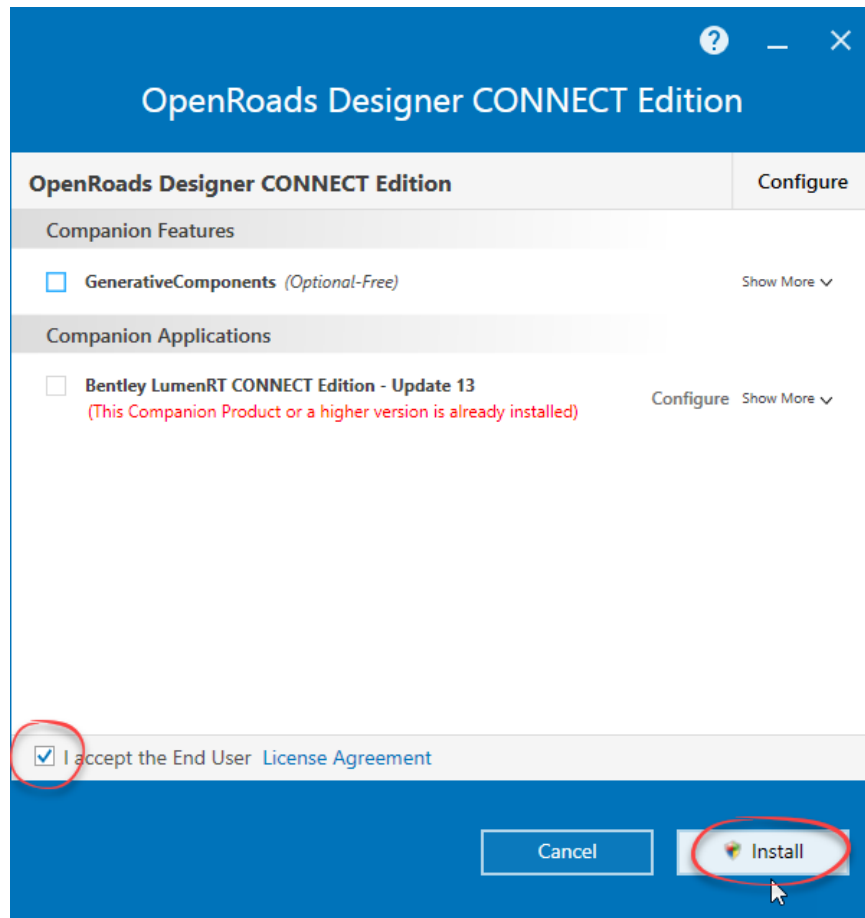
- The selected path/folder will show in the *Custom Configuration* field. Click **Next** to continue with the installation.



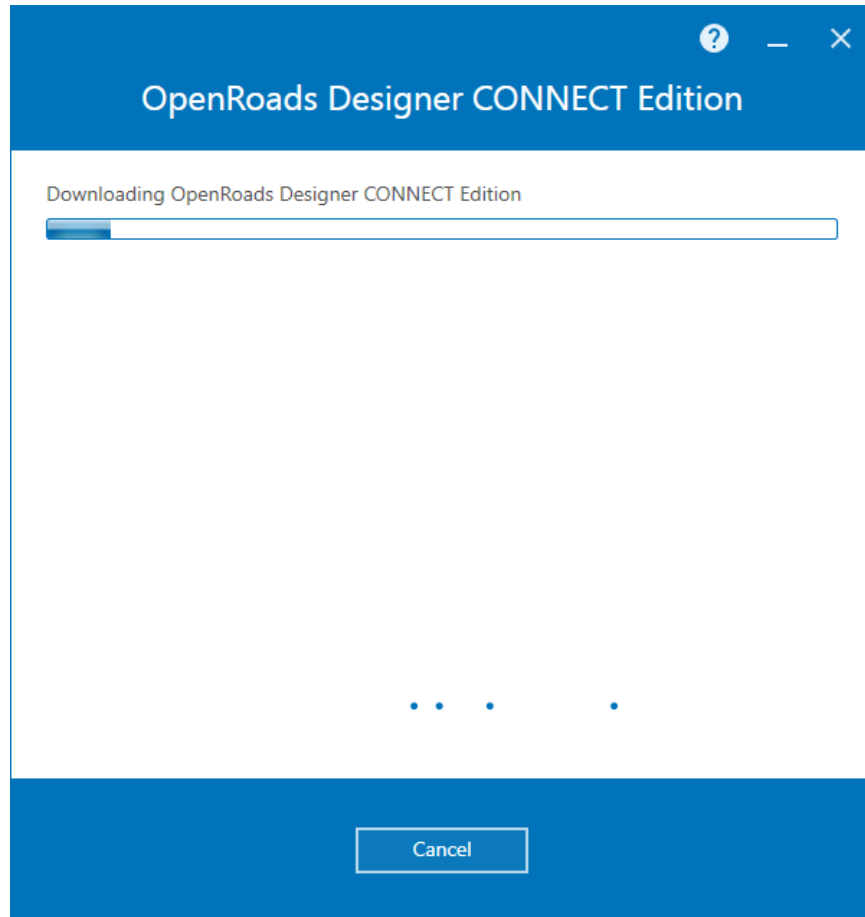
9. You may check the *Desktop Shortcut* option, as shown, if desired. Select **Done** to continue with the installation.



10. You are now returned to the initial installation dialog. Toggle on any desired additional Companion Features or Applications and the *End User License Agreement* option and select **Install**.



11. Wait patiently as OpenRoads Designer CONNECT Edition installs.

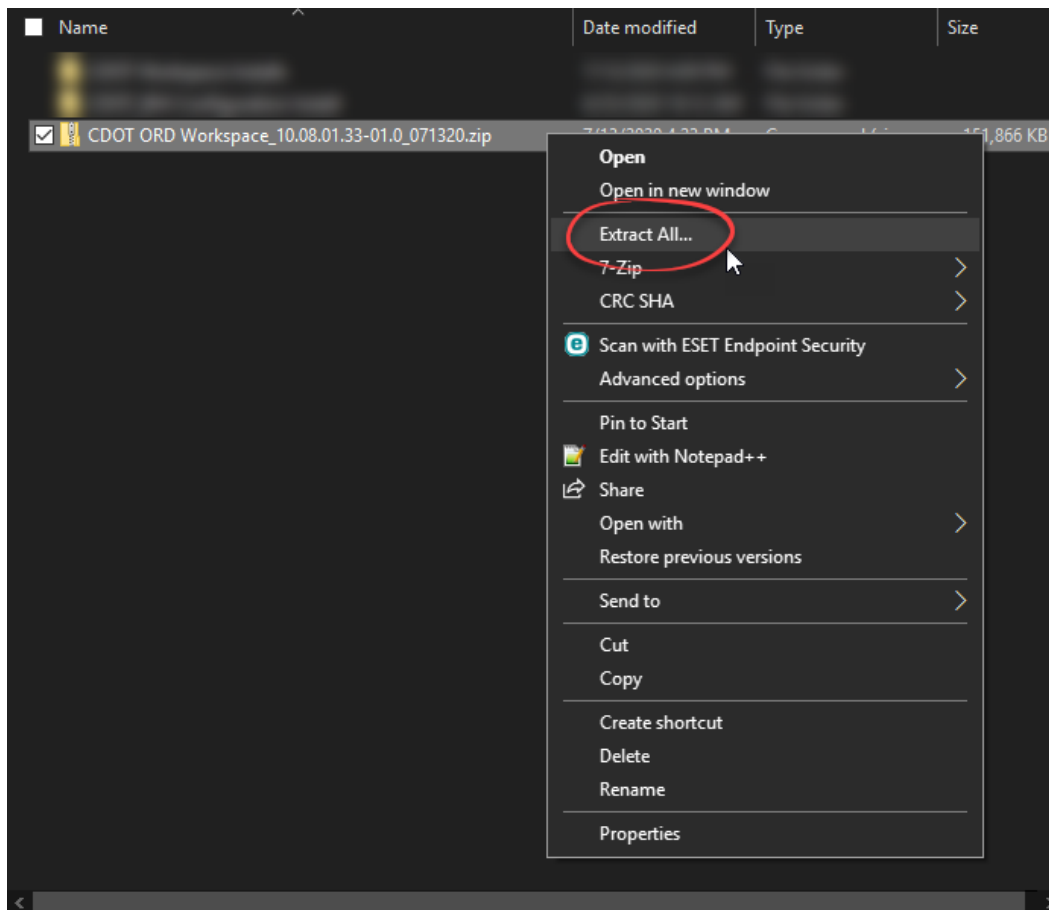


12. Upon Completion, select **Finish**.

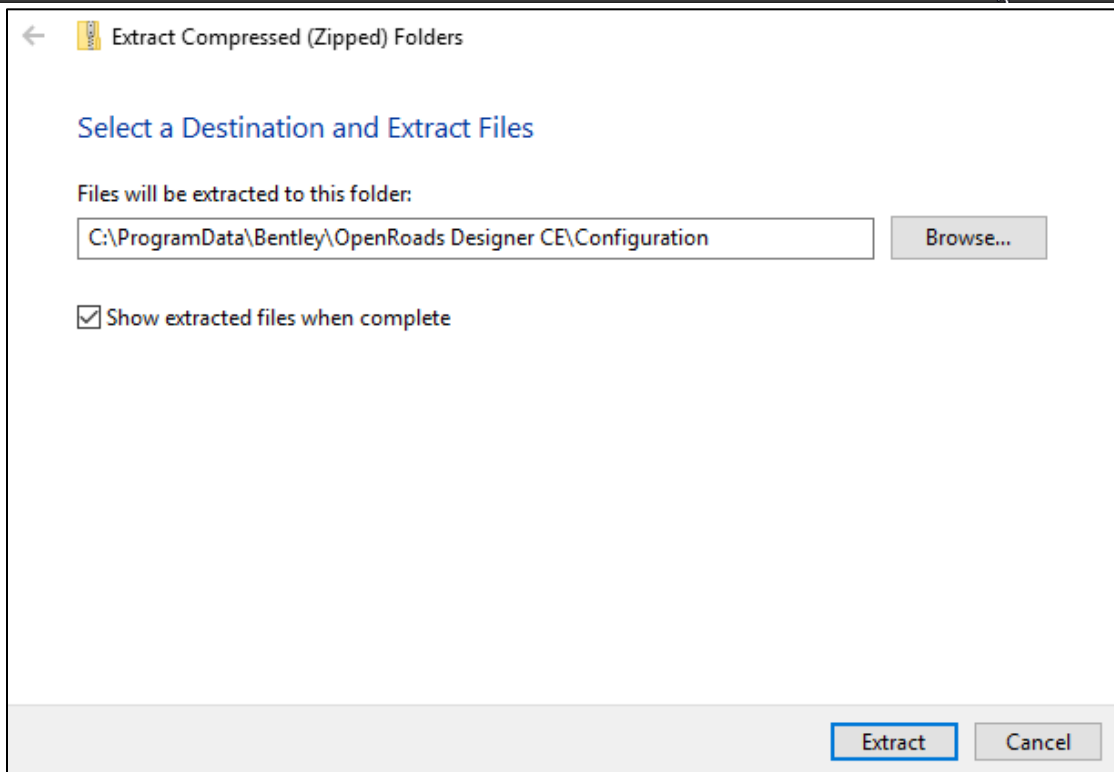
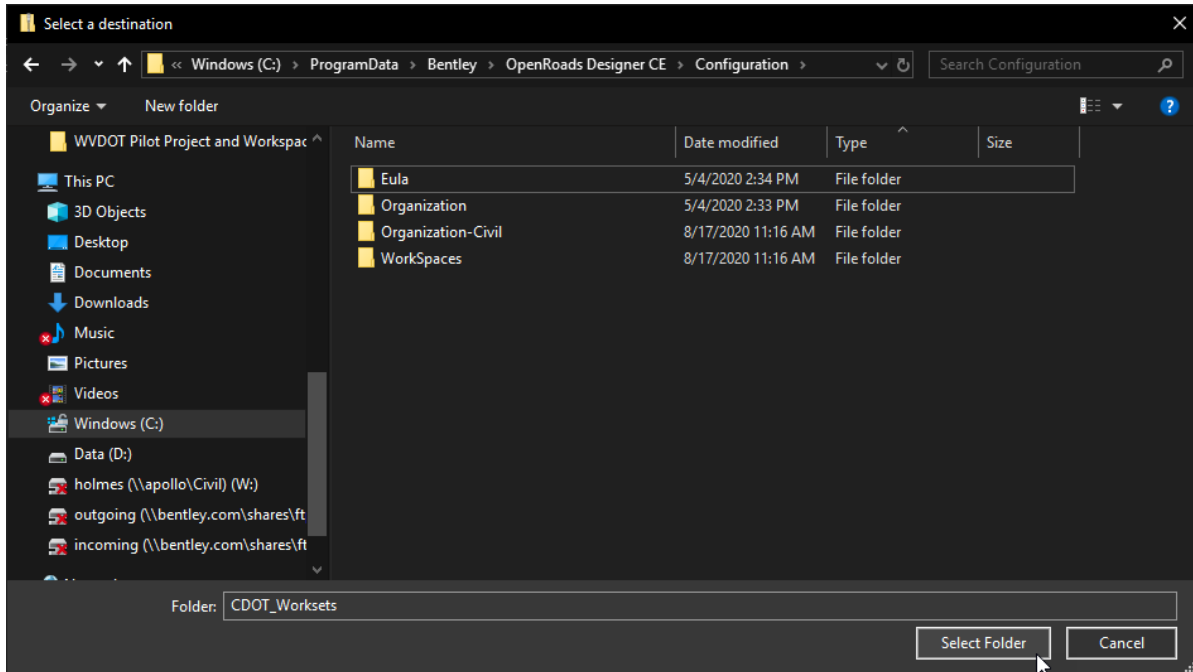


Section 3: Installing the CDOT ORD Workspace:

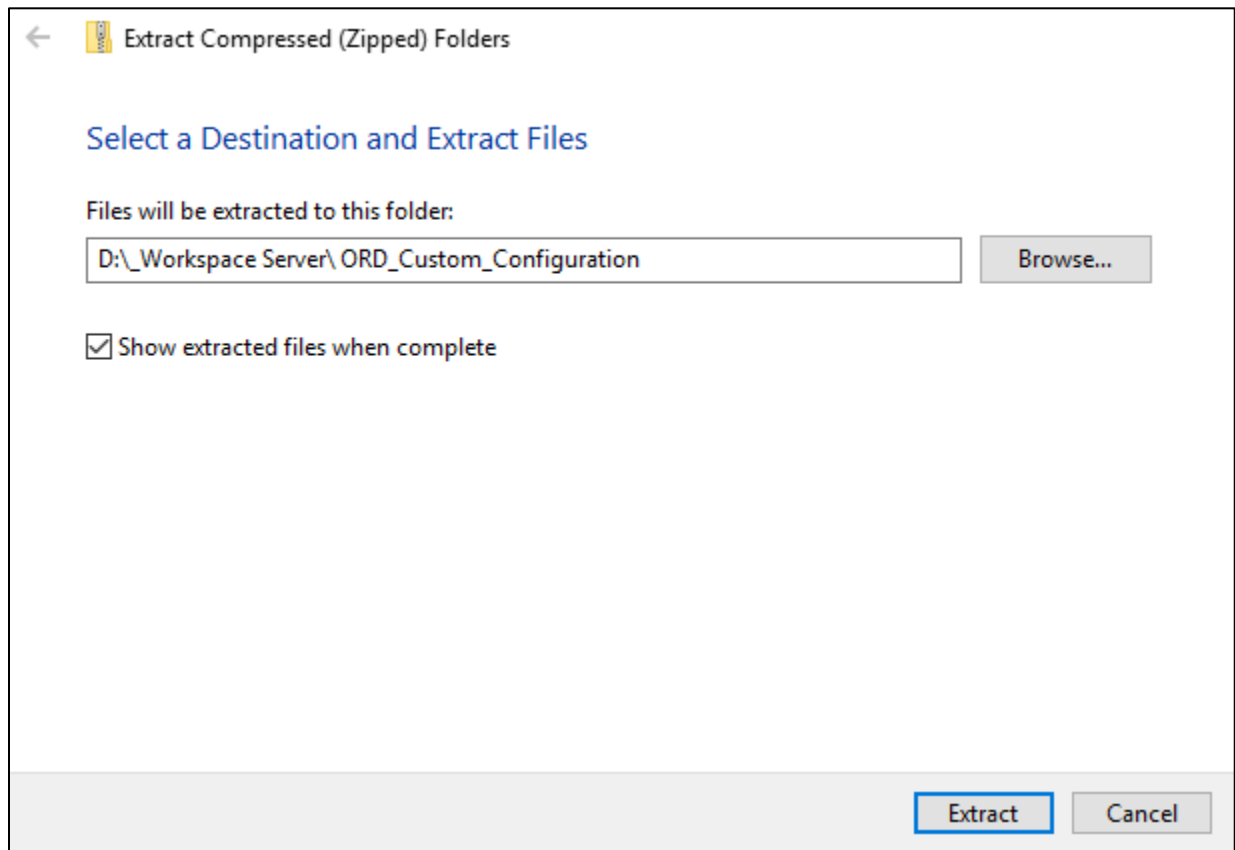
1. Download the **CDOT ORD Workspace_10.08.01.33-01.0_100520.zip** file.
2. Right-click on the .zip file and select **Extract All...**



3. On the *Extract Compressed (Zipped) Folders* dialog, click the **Browse...** button next to the **Files will be extracted to this folder:** field.
4. Navigate to:
 - (1). **IF INSTALLING LOCAL/USER CONFIGURATION (SINGLE PC):**
C:\ProgramData\Bentley\OpenRoads Designer CE\Configuration and click the **Select Folder** Button.

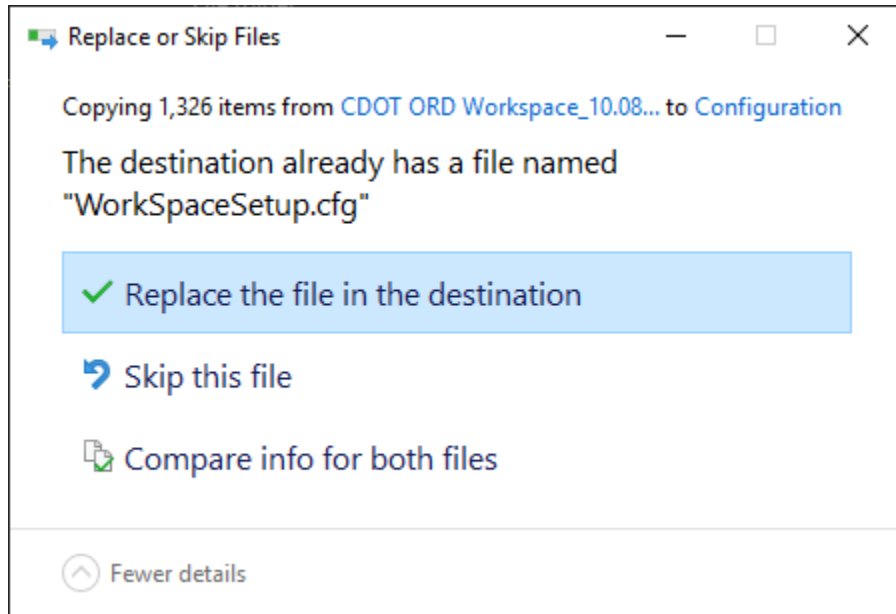


- (2). **IF INSTALLING CUSTOM CONFIGURATION (SERVER):** Navigate to the Custom Configuration Path/folder (ORD_Custom_Configuration) created while installing OpenRoads Designer in the previous section and click the **Select Folder** Button.



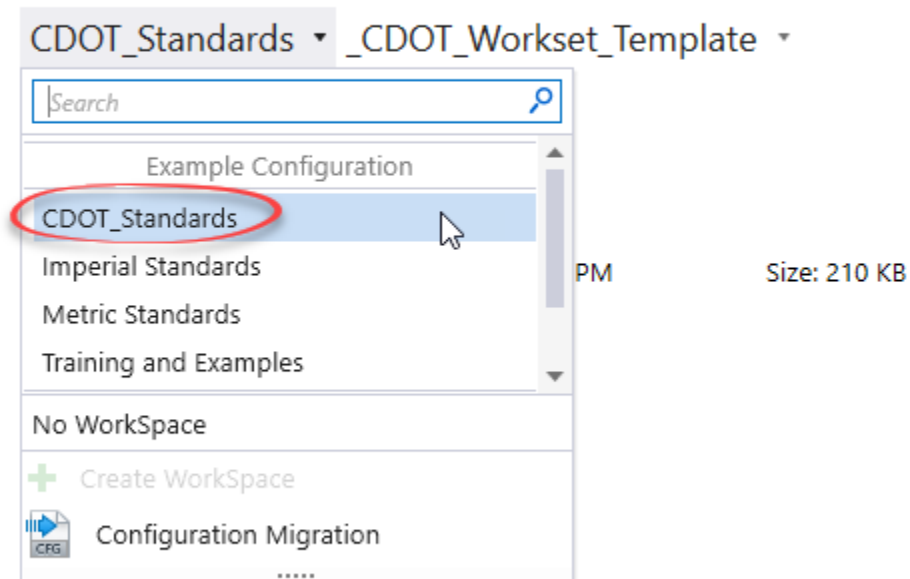
5. Click **Extract** on the *Extract Compressed (Zipped) Folders* dialog and the CDOT workspace files are copied to the proper *Configuration* folder.

NOTE: If running a **LOCAL/USER CONFIGURATION**, you will be prompted to *Replace or Skip* the *WorkspaceSetup.cfg*. Select **Replace the file in the destination**.



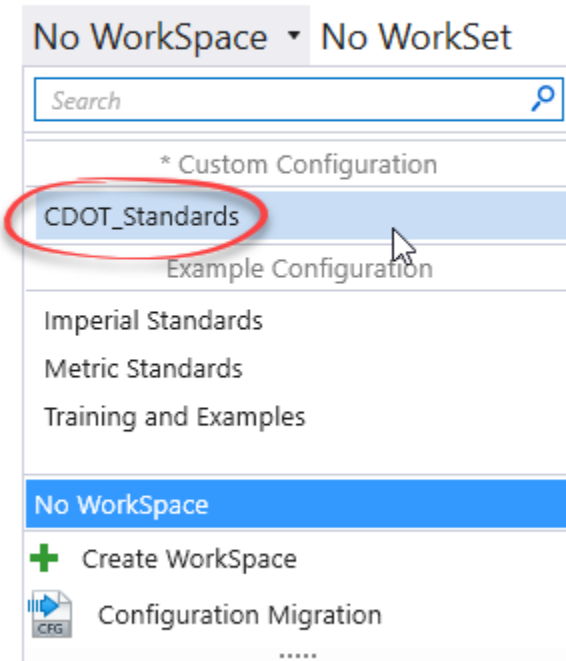
6. Launch OpenRoads Designer.
7. Under the *WorkSpace Menu* you should now see **CDOT_Standards**.
 - (1). **IF LOCAL/USER CONFIGURATION** under *Example Configuration*.

OpenRoads Designer CONNECT Edition



(2). **IF CUSTOM CONFIGURATION** under *Custom Configuration*.

OpenRoads Designer CONNECT Edition



use for a file, start by clicking on Browse.

Manually Setting up a Custom Configuration:

If you have already installed OpenRoads Designer on your machine and used the Bentley default, installed configuration path (*C:/ProgramData/Bentley/OpenRoads Designer CE/Configuration/*) but would like to change to a Custom Configuration follow the steps below.

NOTE: *This is not the recommended approach. It is best to set this path when installing OpenRoads Designer.*

1. Open *File Explorer* and navigate to the server and/or folder location where you would like to store the CDOT Workspace Files.

Create a new folder called **ORD_Custom_Configuration**. **NOTE:** *The folder name can be any name desired. It is not required that the name of the folder be ORD_Custom_Configuration. This is the name being used for the purpose of this document.*

This will be your *Custom Configuration* folder.

2. In File explorer, navigate to the *C:\ProgramData\Bentley\OpenRoads Designer CE\Configuration* folder.
3. Open the **ConfigurationSetup.cfg** in Notepad.
4. In the [General] section go to the `_USTN_CUSTOM_CONFIGURATION=` statement and enter the path to your Custom Configuration.

```
_USTN_CUSTOM_CONFIGURATION=//_Workspace Server/ORD_Custom_Configuration/
```

5. In the [Set Configuration] section, reset `_USTN_CONFIGURATION =` to its default value, pointing to the local/installed example configuration folder.

```
_USTN_CONFIGURATION= C:/ProgramData/Bentley/OpenRoads Designer CE/Configuration/
```

NOTE: *Be sure to use forward slashes (/) when defining a path in a Bentley .cfg file.*

```

#-----
# ConfigurationSetup.cfg - Configures the root Configuration directory
# for Your Organization
#
# The main function of this configuration file is to allow user to specify
# the root Configuration directory to activate. The active Configuration
# directory is represented by _USTN_CONFIGURATION. By default, it points to
# the installed Configuration defined by _USTN_INSTALLED_CONFIGURATION,
# which can consist of example WorkSpaces and WorkSets.
# If your organization has its own Configuration directory, you can define
# _USTN_CUSTOM_CONFIGURATION to that directory path and use it as follows.
#
#_USTN_CUSTOM_CONFIGURATION = D:/../MyConfiguration/
#_USTN_CONFIGURATION : ${_USTN_CUSTOM_CONFIGURATION}
#-----

#-----
# START: The section defines user selection at the time of installation.
# These lines are generated by installer.
[General]
_USTN_CUSTOM_CONFIGURATION=//Workspace Server/_ORD_Custom_Configuration/

[SetConfiguration]
%if !defined (_USTN_USER_CONFIGURATION)
%if defined (_USTN_CUSTOM_CONFIGURATION) && (${_USTN_CUSTOM_CONFIGURATION} != "") && exists (${_USTN
_USTN_CONFIGURATION = C:/ProgramData/Bentley/OpenRoads Designer CE/Configuration/
%endif
%endif

```

6. Save and close the *ConfigurationSetup.cfg* file.
7. OpenRoads Designer is now setup to use a *Custom Configuration* path. Follow the steps in the previous section: [Installing CDOT ORD Workspace; Custom Configuration](#) to install the CDOT Workspace.