

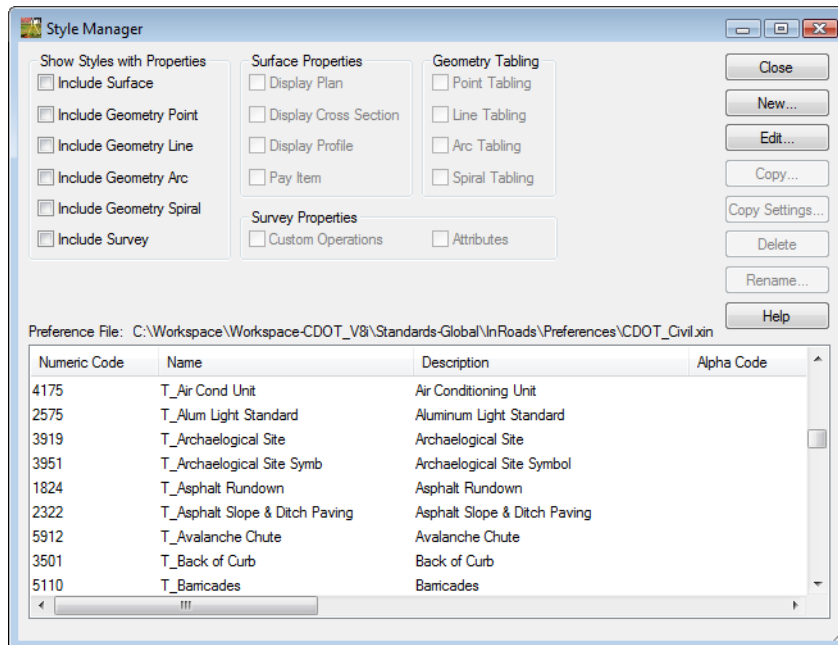
LAB 3 - Feature Codes and Control Codes

Lab 3.1 - Viewing Survey Feature Table

The Survey Feature Table controls how the graphics are displayed on the screen. These settings are the CDOT standard changes should not be made to the file. However, it is a good to understand what controls the display of the survey data and how the data is interpreted.

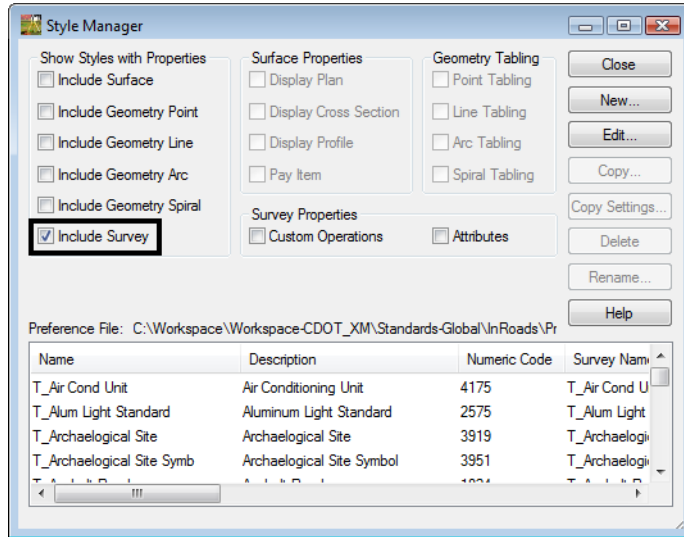
Section Objectives:

- ◆ Open the Style Manager dialog.
 - ◆ Use the Survey Properties option to narrow a lookup.
 - ◆ Review Control Codes settings.
1. Launch InRoads Survey if it is not already;
 - a. Open *12345SurveyTopo100Scale01.dgn* from the *Working* folder.
 - b. Open *12345SURV_Fieldbook.fwd* from the *Field_Books* folder.
 2. From the InRoads Survey pull-down menu, select **Tools > Style Manager**. The *Style Manager* dialog will appear.



3. Take a minute to scroll through the list of **Names**. Using the scroll bars on the side or using your roller on the mouse.

- In the Show Styles with Properties section of the dialog **Check ON Include Survey**. The list of Names is filtered to show only the Feature Styles that are used in Survey. Survey Feature Styles typically begin with “T_”.



- Move your cursor to the **Name** and hold on the gray line in the gray title bar between **Name** and **Description**. Your cursor will change appearance to a vertical line and arrows, allowing each column in the Feature Table to be resized.

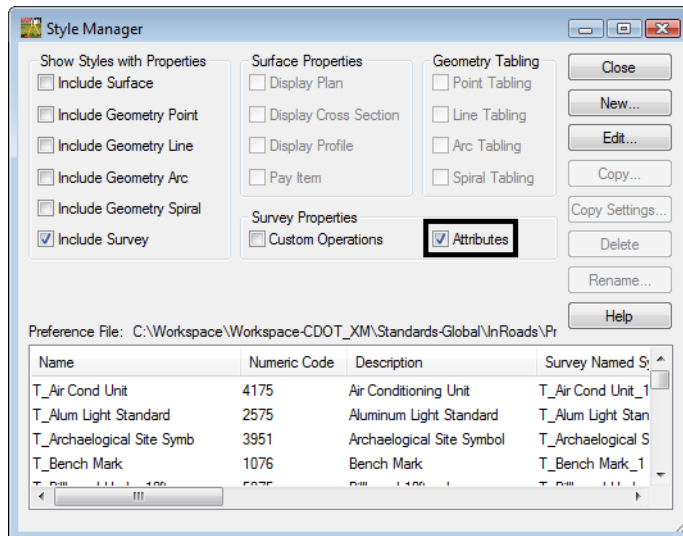
Name	Description	Numeric Code	Survey Name
T_Air Cond Unit	Air Conditioning Unit	4175	T_Air Cond Ur
T_Alum Light Standard	Aluminum Light Standard	2575	T_Alum Light :
T_Archaeological Site	Archaeological Site	3919	T_Archaeologic
T_Archaeological Site Symb	Archaeological Site Symbol	3951	T_Archaeologic

- Move the cursor to the **Name** and <D> on the column heading **Name**. This will resort all the definitions in ascending or descending order.

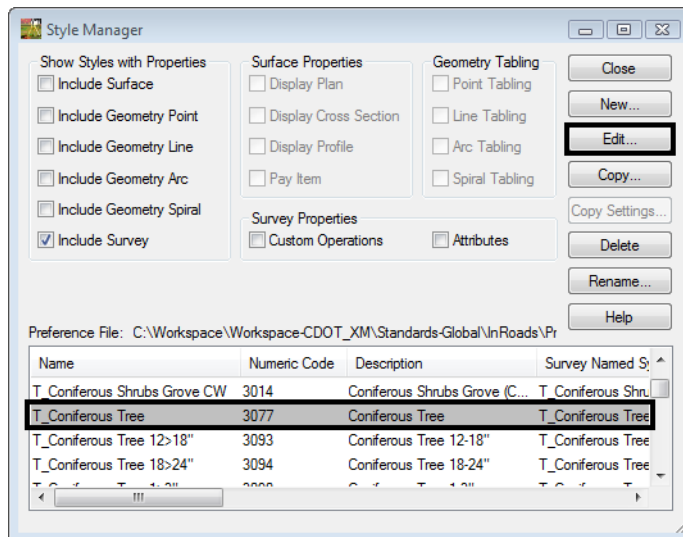
Name	Description	Numeric Code	Survey Name
T_Air Cond Unit	Air Conditioning Unit	4175	T_Air Cond Ur
T_Alum Light Standard	Aluminum Light Standard	2575	T_Alum Light :
T_Archaeological Site	Archaeological Site	3919	T_Archaeologic
T_Archaeological Site Symb	Archaeological Site Symbol	3951	T_Archaeologic

- <D> on the **Numeric Code** column twice to sort the codes in ascending and descending order.
- <D> Hold and Drag on the **Numeric Code** column, move it next to the **Name** column.

9. In the *Survey Properties* section **Check ON Attributes**. Notice how the feature list filters and displays only the survey features that have an attribute defined.

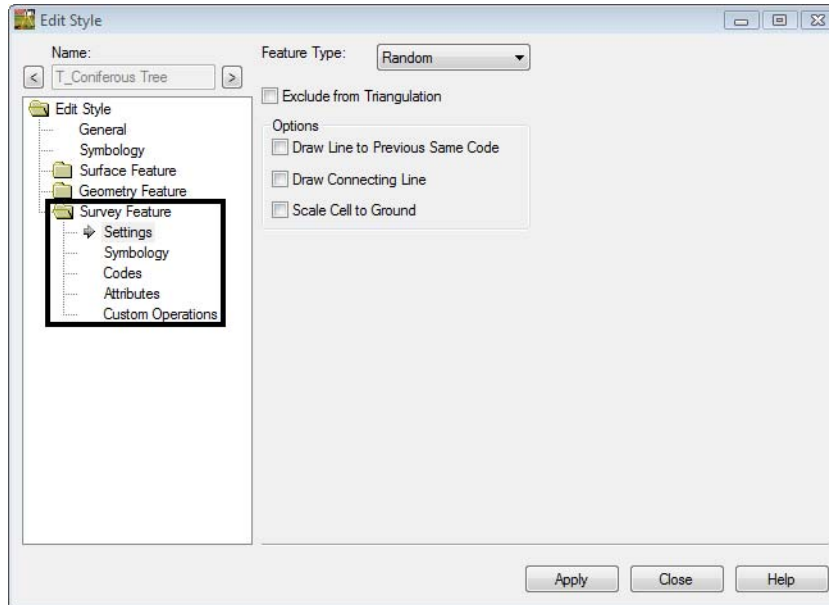


10. **Check OFF** the option **Attributes** to see all the codes again before continuing.
11. Locate the *Style Name T_Coniferous Tree Numeric Code 3077* in the Style Manager dialog.



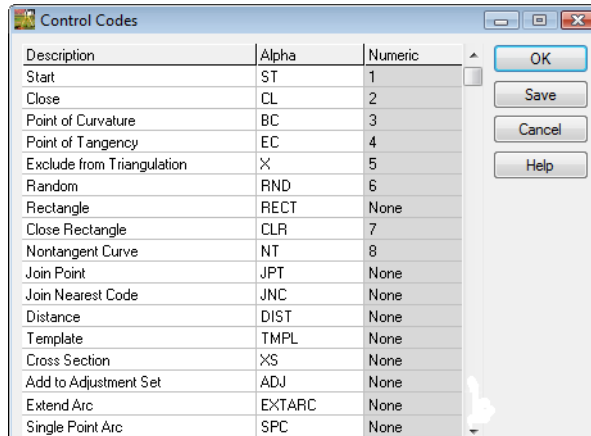
12. <D> the name and then <D> **Edit** button. The *Edit Style* dialog will appear.

13. <D> the **Survey Feature** leaf additional sub categories will appear.



14. <D> the sub categories under **Survey Feature** and review the settings. DO NOT make any changes.
15. When finished <D> the **Close** button do not apply or save any changes.
16. <D> the **Close** button in the **Style Manager** dialog. Do not save any changes.

17. From the InRoads Survey pull down select **Survey > Control Codes**. The Control Codes dialog will appear.
18. Review the Control Codes refer to the reference material for explanation of the codes.



19. <D> the **Cancel** button. The **Control Codes** dialog will close not saving any changes.

Section Summary:

- ◆ In this lab the Style Manager was opened and the settings were explored.
- ◆ In this lab the Control Codes dialog was opened.

