

# CDOT Consultant Server Setup



This document describes the setup of the CDOT Workspace if it is to reside on a server.

## Setting Up The Workspace

1. Read the CDOT MicroStation/InRoads Configuration requirements and installation instructions. This information is found at the following link on the CDOT website:

[http://www.dot.state.co.us/DesignSupport/CDOT\\_Microstation\\_Inroads\\_Configuration/2004.htm](http://www.dot.state.co.us/DesignSupport/CDOT_Microstation_Inroads_Configuration/2004.htm)

This will place the workspace on the server at the specified location.

**Note:** In the examples below, the following server location is used. “S:\Client Standards\CDOT\”

2. Open and review the CDOT Configuration ReadMe file. It is located in S:\Client Standards\CDOT\Workspace-CDOT\CDOT Notes.
3. Follow step 7 on the installation instructions to activate the server based workspace for MicroStation, InRoads and Redline. For MicroStation and InRoads, edit the following file:

C:\Program

Files\Bentley\Program\MicroStation\config\system\zCDOT\_System.cfg

```
zCDOT_System.cfg - Notepad
File Edit Format View Help
#####
#zCDOT_System.cfg was generated for Colorado Department of Transportation #
#By Bohannan Huston Inc. Last Modification; Date: 11/30/2006, Time: 21:00 by #
#Nick Johnson Contact Bohannan Huston for questions or concerns #
#About this file at (877) - 799 - 5103 M-F 8am to 5pm MST. #
#####
# The following variables must be defined on each local computer. #
# Each variable is described below. #
#####
_CDOT_WORKSPACE = S:/client standards/CDOT/workspace-CDOT/
_USTN_SITE = %(_CDOT_WORKSPACE)/standards-Global/CFG Files/site/
```

For Redline, edit the following file:

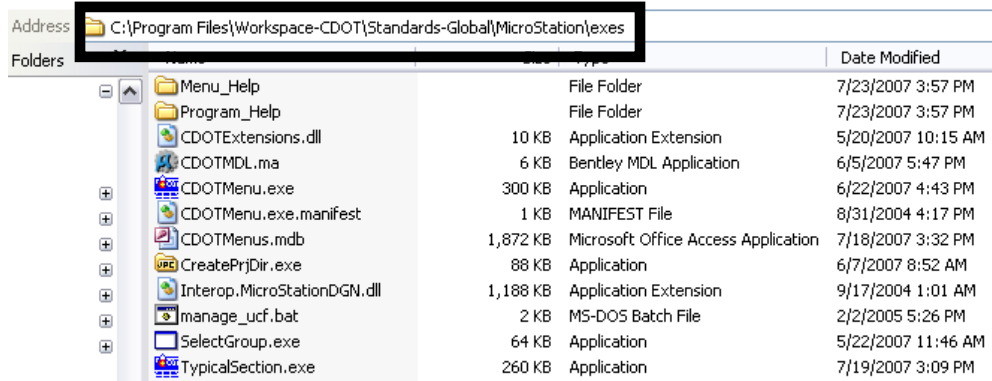
C:\Program

Files\Bentley\Program\Redline\config\system\zCDOTRedline\_System.cfg

```
zCDOTRedline_System.cfg - Notepad
File Edit Format View Help
#####
#zCDOTRedline_System.cfg was generated for Colorado Department of Transportation #
#By Bohannan Huston Inc. Last Modification; Date: 01/31/2007, Time: 11:00 by #
#Nick Johnson Contact Bohannan Huston for questions or concerns #
#About this file at (877) - 799 - 5103 M-F 8am to 5pm MST. #
#####
# The following variables must be defined on each local computer. #
# Each variable is described below. #
#####
_CDOT_WORKSPACE = S:/client standards/CDOT/workspace-CDOT/
_USTN_SITE = %(_CDOT_WORKSPACE)standards-Global/CFG Files/Redline/
```

## CDOT Consultant Server Setup.pdf

- The exe folder in the configuration must be copied onto the user's computer in order for the programs to function properly. The *exes* folder should be placed in the following location: *C:\Program Files\Workspace-CDOT\Standards-Global\MicroStation\*. This is required because the custom extensions are built on .NET framework and there are Windows securities that forbid running them on a server.



- For those using the *CreatePrjDir.exe*, copy the following workspace folders (and their data) to the *C:\Program Files\* directory:

*Workspace-CDOT\Standards-Local\Projects*

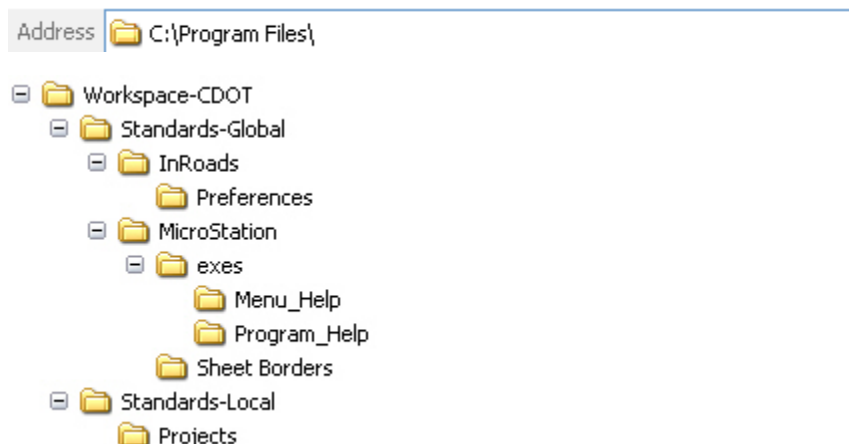
*Workspace-CDOT\Standards-Global\InRoads\Preferences*

*Workspace-CDOT\Standards-Global\MicroStation\Sheet Borders*

The pcf file created by the *CreatePrjDir.exe* program will be placed in the following location on the computer used to run the program:

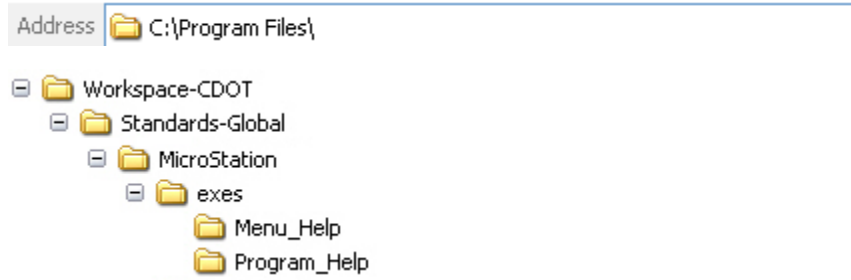
*C:\Program Files\Workspace-CDOT\Standards-Local\Projects\*

- Copy this pcf file to the *S:\Client Standards\CDOT\Workspace-CDOT\Standards-Local\Projects*. All users accessing this project will use the pcf file located on the server because the MicroStation configuration variables point to this directory.
- Below is an example of the folder structure required on the local drive for those using the *CreatePrjDir.exe*:



## CDOT Consultant Server Setup.pdf

8. The folder structure required on the local drive for those not using the *CreatePrjDir.exe* is:



These folders and files do not control the resources used by the program.

9. Follow step 14 on the installation instructions to deactivate the workspaces.