

CDOT Configuration ReadMe



Introduction

This Read Me has been divided into the following sections.

- New Features –
 - Default Project Directory
 - Custom Programs
 - InRoads Preferences
 - MicroStation Configuration
 - Cell Libraries
 - Plotting

New Features

Version 04.02.00 March 24, 2010

This release implements the following enhancements and fixed problems that have been reported during production. Updates made to Documentation for additional workflows, Custom Programs for Menu update/fix, MicroStation Configuration, and plotting.

Default Project Directory

- Updated the ROW Properties Tab Sheet
- Updated LSCD Title Sheet
- Updated PCD Title Sheet

CDOT Menu

- Added AutoTURN to CDOT Tools pull-down
- Added GuidSIGN to CDOT Tools pull-down
- Added TORUS to CDOT Tools pull-down

InRoads Preferences

- Added a Rt. and a Lt. Prefix to Tools > Options > Abbreviations Tab
- Added new preferences for End Area Volumes
- Updated the CDOT-Notes.dft file

CDOT Configuration ReadMe.pdf

MicroStation Configuration

- Added new variables for Transoft Solutions third party software
- Updated Level Translation CSV file
- Changed a cell Library variable to allow UCF defined cell libraries

Cell Libraries

- All cell Libraries
 - Removed patterns and replaced with just linework
 - Patterning in cells causes an error in MicroStation
- Bridge
 - Added Mac Hasan
 - Deleted Jamal Elkaissi
 - Added missing levels
- General.cel
 - Updated SHEET_Region-Mark-Mueller
 - Updated SHEET_SURV-LSCD-Title-Sheet
 - Updated SHEET_SURV-PCD-Title-Sheet

Plotting

- Created a new ROW pen table

CDOT Configuration ReadMe.pdf

Introduction

This Read Me has been divided into the following sections.

New Features –

- Default Project Directory
- Documentation
- Custom Programs
- InRoads Preferences
- Storm & Sanitary
- Survey Preferences
- MicroStation Configuration
- Cell Libraries
- Level Libraries
- Seed Files
- Plotting
- Known Issues

New Features

Version 04.01.00 January 29, 2010

This release implements the following enhancements and fixed problems that have been reported during production. Updates made to Documentation for additional workflows, Custom Programs for Menu update/fix, MicroStation Configuration, and plotting.

Default Project Directory

- Modified tab sheets
- Added saved fences to all sheet files
- Updated new Standards Plan List from the CDOT website
- ROW Sheets were updated

CDOT Menu

- Changed Help links to the external web addresses
- Added items for new Bridge resources
- Added items for new ROW/Survey resources

InRoads Preferences

- Added new preferences for Mass Haul Diagram
- Modified Station option for PnP Generator

CDOT Configuration ReadMe.pdf

MicroStation Configuration

- Added new macros
 - detailer.ma
 - cellcounter.ma
- Level translation csv updated
- Modified scales.def file
- Updated version number on CDOT Icon
- Changed the level translation variable

Cell Libraries

- Roadway_Design.cel
 - Modified Curb and Gutter cells
- General.cel
 - Added Roman Jauregui
 - Added Robin Stoneman
 - Added Robert Hays
 - Deleted Mark Gosselin
 - Deleted Carrie DeJiacomo
 - Deleted Doug Pearson
 - ROW sheet borders were updated
- ROW.cel
 - Added ROW Easement Text Rectangle
 - Added ROW Easement Text Oval
 - Added ROW Fnd ROW Square Open
 - Added ROW Hexagon
 - Added ROW Set easement mon solid circle
 - Added ROW Set ROW Square Solid
 - Added ROW Temp Esmt symbol
 - Added ROW Solid Triangle
 - Added ROW Triangle with Dot
 - Added ROW Qtr Sect Circle
 - Added Diamond for Section Corner
- Topo.cel
 - Monument cells were updated

Level Libraries

- Bridge
 - Added new levels
 - BRDG_Center-Blockout
 - BRDG_Center-PostTensioning
 - BRDG_Center-Precast

CDOT Configuration ReadMe.pdf

- BRDG_Center-Rebar
- BRDG_Center-Splice
- BRDG_Center-Web
- BRDG_Outline-Blockout
- BRDG_Outline-Splice
- BRDG_Outline-Wall-Coping
- BRDG_Outline-Web
- BRDG_Rebar-Spiral
- BRDG_Rebar-WWF
- BRDG_Rebar-Ties-Vertical
- BRDG_Rebar-Ties-Horizontal
- BRDG_Center-Bridgerail
- BRDG_Rebar-Connection
- BRDG_Outline-Wall-BackFace
- BRDG_Outline-Geomembrane
- BRDG_Outline-Geotextile
- BRDG_Outline-Wall-MSE
- BRDG_Outline-Wall-CIP
- BRDG_Outline-Wall-SoilNail
- BRDG_Phasing1
- BRDG_Phasing2
- BRDG_Phasing3
- BRDG_Phasing4
- BRDG_Phasing5
- ROW.dgnlib
 - Several weights were changed

Standard Libraries

- Text Styles
 - Moved all child styles out to parent level
- Dimension Styles
 - Set new XM settings

Seed Files

- Added a Bridge-2D-Seed_CDOT.dgn
 - Set to default seed file in the Bridge environment

Plotting

- Modified batch print spc file to toggle of reference file search
- Modified ROW pen table
- Add a ROW print driver
- Modified PDF print drivers to enable leveling

CDOT Configuration ReadMe.pdf

Introduction

This Read Me has been divided into the following sections.

- New Features –
 - Default Project Directory
 - Documentation
 - Custom Programs
 - InRoads Preferences
 - Storm & Sanitary
 - Survey Preferences
 - MicroStation Configuration
 - Cell Libraries
 - Level Libraries
 - Seed Files
 - Plotting
 - Known Issues

New Features

Version 04.00.00 January 23, 2009

Version 04.00.00 requires that any beta version that had been delivered, be deleted from the computer before installation. Therefore, make sure the following have been removed:

- C:\Workspace
- C:\Program Files\Bentley\Redline\config\system\zCDOTRedline_System.cfg
- C:\Program Files\Bentley\MicroStation\config\systemzzCDOT_1_WhichGroup.cfg
- C:\Program Files\Bentley\MicroStation\config\systemzzCDOT_1_WhichGroup.cfg

This release implements enhancements and fixed problems that have been reported during production on the Bentley XM versions of MicroStation, Redline, and InRoads.

Updates have been made to Documentation for additional workflows, Custom Programs for Menu update/fix, MicroStation Configuration, and plotting.

Default Project Directory

- All dgn's
 - Changed the Author of file properties to CDOT
 - Changed the Company of file properties to Colorado DOT
 - Added new ROW files
- Added tab sheets for groups

Documentation

- New workflow manuals were added and updated
 - Added workflows include:
 - CDOT County Sheet Composer
 - CDOT Level Update for V04.00

CDOT Configuration ReadMe.pdf

- Updated workflows include:
 - CDOT Alignment Display in Cross Section
 - CDOT Annotating Horizontal and Vertical Alignments
 - CDOT Batch Printing
 - CDOT Calculate Volume
 - CDOT Calculating Quantities With InRoads and Quantity Manager
 - CDOT Creating Combined Surfaces
 - CDOT Displaying Features in Cross Section and Profile
 - CDOT Importing gINT Project Data
 - CDOT InRoads Feature Filters
 - CDOT InRoads Place Note Command
 - CDOT MicroStation Printing
 - CDOT Plan & Profile Generator
 - CDOT Update InRoads Features
 - CDOT Workspace Update
 - CDOT Printer Driver Adjustments
 - Delete Workflows
 - CDOT Level Update for V03.02

Custom Programs

- Added ModElev.ma
- Added CDOTApplications.config.xml to control configuration location for custom programs.
- The CreatePrjDir.exe has been rewritten and renamed for V04. The new name is ProjectCreationUtility.exe.
- Updates and Fixes have been made to the TypicalSection.exe program
- Updated the CDOT Menu for new functionality with XM
- Updated CDOT Menu database with new functionality and requests
- Removed ModZ.ma from the workspace

InRoads Preferences

- Added feature styles for template components
- Move preferences to the XIN file
- Developed new InRoads Template Library, ITL
- Updated XML reports

Survey Preferences

- Moved preferences to the XIN file

MicroStation Configuration

- A custom CDOT interface dgnlib file has been created
- Active Angle by 3 pnts has been added to the Misc. Tool palette

CDOT Configuration ReadMe.pdf

- Workspace Folder
 - Renamed the XM workspace to Workspace-CDOT_XM so a dual platform can be used
- zCDOT_System.cfg
 - Modified variable to point to new workspace folder
- zCDOTRedline_System.cfg
 - Modified variable to point to new workspace folder
- CDOT_2_Standards.cfg
 - Removed old variables that have been disabled or moved to other cfg files
 - Defined new variables for the XM versions
- CDOT_3_Standards_Groups.cfg
 - Added Materials_&_Geotechnical.dgnlib to the level library list
 - Modified variable to point to renamed Bridge seed file
 - Removed Survey_Caps.cel from the Cell Library List variable.
- CDOT_4_Standards_CDOT-Site.cfg
 - Defined new variables for the XM versions
- CDOT_5_Standards_CDOT-Users.cfg
 - Defined new variables for the XM versions
- CDOT User.ucf
 - Rebuilt to certify with XM
- CDOT User.upf
 - Rebuilt to certify with XM
 - Added CDOT Help to the MicroStation menu pull downs.

Redline Configuration

- A custom CDOT interface dgnlib file has been created
- CDOT_2R_Standards.cfg
 - Removed old variables that have been disabled
 - Defined new variables for the XM version
- CDOT_4R_Standards_CDOT-Users.cfg has been renamed to CDOT_3R_Standards_CDOT-Users.cfg
 - Removed old variables that have been disabled
 - Defined new variables for the XM version
- CDOT_3R_Standards_CDOT-Projects.cfg has been renamed to CDOT_4R_Standards_CDOT-Projects.cfg
 - Removed old variables that have been disabled
 - Defined new variables for the XM version

Cell Libraries

- All cell libraries
 - Changed the Author of file properties to CDOT
 - Changed the Company of file properties to Colorado DOT
- Added new cells for ROW

CDOT Configuration ReadMe.pdf

- Added new annotation scale toggle to relevant cell models

Level Libraries

- All dgnlib's
 - Changed the Author of file properties to CDOT
 - Changed the Company of file properties to Colorado DOT
- Bridge
 - Change filters to work around BUG

Standard Libraries

- Text Styles
 - Moved all child styles out to parent level
- Dimension Styles
 - Set new XM settings

Seed Files

- CDOT Preference Seed.upf
 - Rebuilt to certify with XM
- Bridge-3D-Seed_CDOT.dgn
 - Renamed from 4-Sig-Fig-Seed_CDOT.dgn.
- All Seed dgns
 - Set linestyle scale to read annotation scale
 - Disabled linestyle Scale Factor in Element > Line Styles > Custom
 - Changed the Author of file properties to CDOT
 - Changed the Company of file properties to Colorado DOT

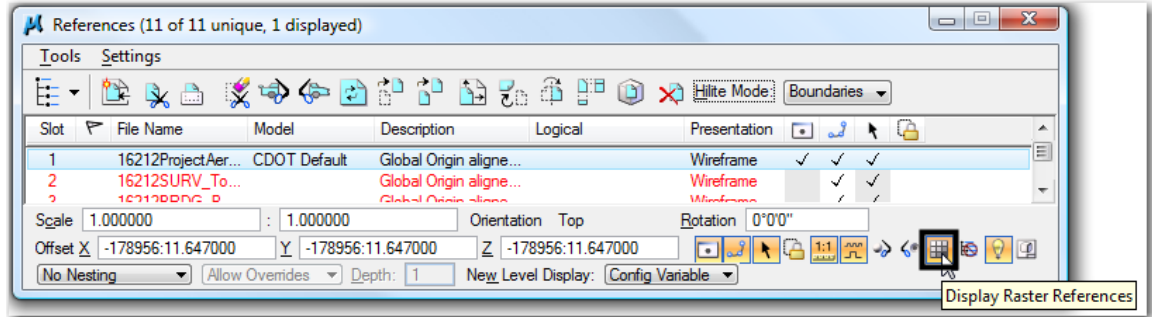
Plotting

- New Plotter Driver files have been created for V04. These pltcfg files replace the plt files from past releases and must be edited using the Print Driver Configuration Editor in MicroStation rather than notepad.
- Updates have been made to all the Pen Tables
- Updated Batch Plotting default values

Known Issues

- Raster display through a dgn reference
 - When turning off the display of a dgn reference that contains a raster image, the raster will not turn off. The fence of the raster will but the full rasters will then appear.
 - To get around this, do not use the reference display toggle. Use the Display Raster Reference toggle.

CDOT Configuration ReadMe.pdf



- Filter Groups
- Filter groups are not functioning properly and levels will not past the filter.
There isn't a work around for this other than figuring out another way to filter the list.
- Batch Process and Converter
 - The Function to add a directory or folder to a process is not available.
 - The work around is to drill down to the folders and add the dgn's to the list