

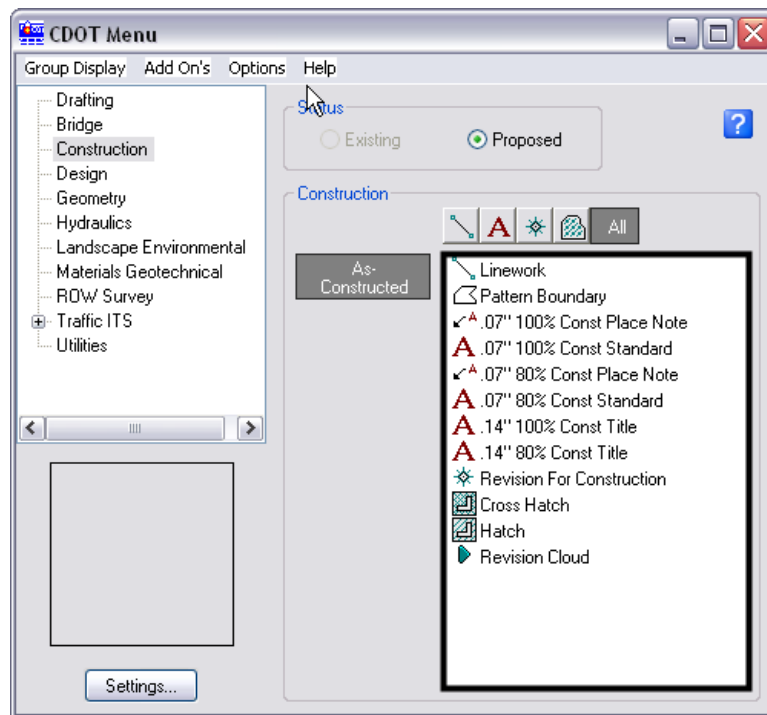
CDOT Construction Menu



This document guides you through the functionality of the CDOT Construction Menu. The CDOT Menu is designed so that the user can effortlessly maintain the Department's drafting standards. Each command selected from menu will automatically set the correct level and symbology for the element to be placed. It also launches the MicroStation command needed to place the element. The menu should also be used to set symbology even when a different command will be used to place an element.

The CDOT Menu Explorer (left pane of the dialog box) separates the menu options based on specialty groups. The Drafting option will be used by all groups. Some menu options assigned to a specialty group may also be required by another, so be sure to check the other specialty groups' menu options if a command or symbology is not found within your group.

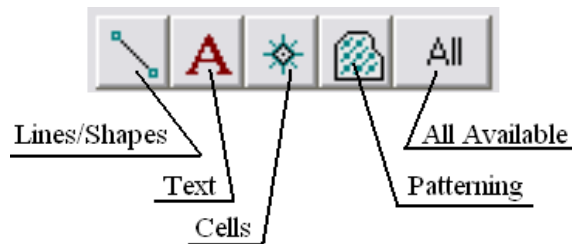
1. Select the desired Item from the Selection window. Follow the prompts displayed in the lower left corner of the MicroStation window to complete the element.



Note: The Construction menu only contains proposed elements so the Status window will not be used.

CDOT Construction Menu.pdf

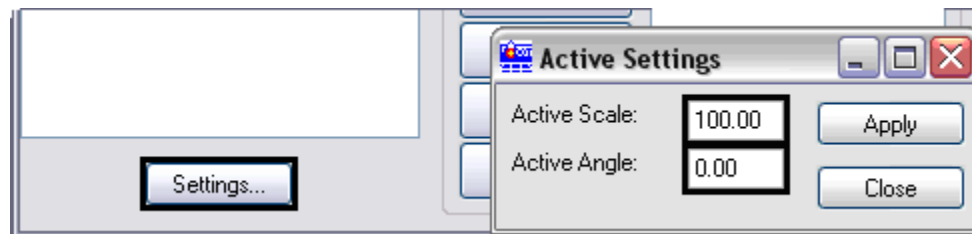
- There are 5 buttons across the top of the Selection Window. These are the Filter buttons. They are used to limit the Item list to a specific type of element. The illustration below identifies the element types displayed by each Filter button.



Settings Options

The Settings options are used to change the scale and angle at which elements are placed

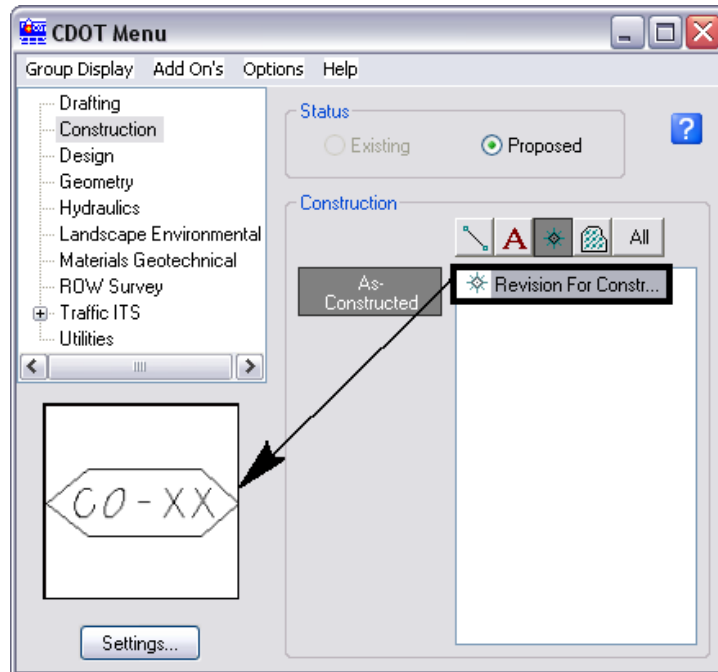
- The **Active Scale** and **Active Angle** settings are accessed from the **Settings** button on the CDOT Menu.
- To change the **Active Scale** or **Active Angle**, key-in the desired value in the appropriate field. **Note:** the Active Angle is view independent and not associated with view rotation. Therefore, the x-axis is always horizontal regardless of the view rotation.



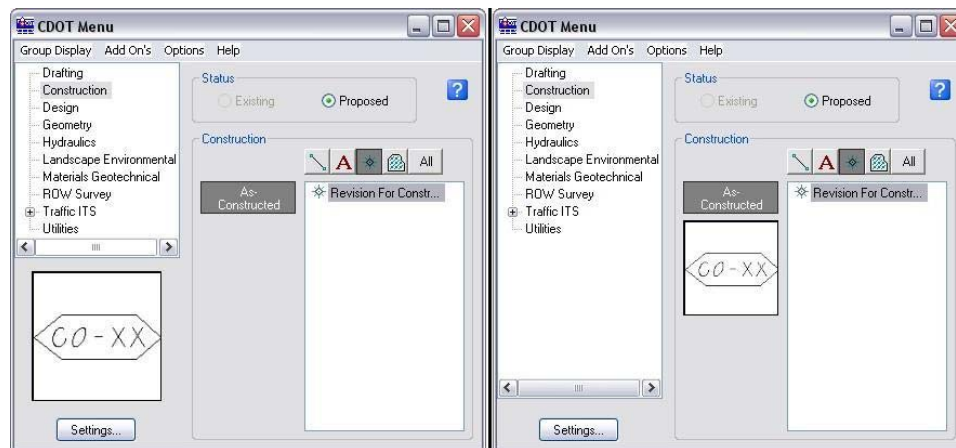
CDOT Construction Menu.pdf

The Cell Preview Window

12. To see a preview of a cell, Data on the cell name in the list. The cell is then displayed in the preview window.



13. The **Cell Preview Window** can be relocated within the CDOT Menu. It may reside under the **Menu Explorer** (left) or under the **Category** icons (right).



To move the **Cell Preview Window**, **Data** and hold on the window, drag it to the new location, and release the mouse button.