

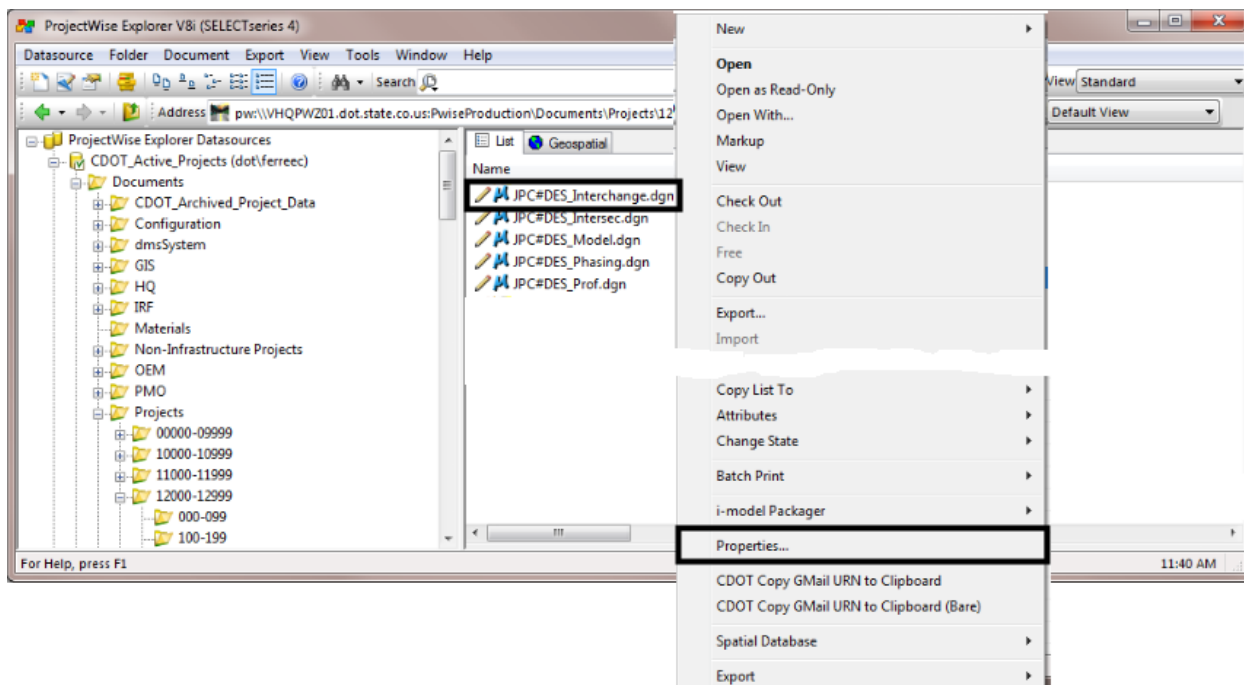
# CDOT Workflow IR 18 – Using InRoads SS4 and SS2 with MicroStation SS4

This document describes the procedures for starting MicroStation SS4 by itself and starting MicroStation SS4 along with InRoads SS4 and InRoads SS2.

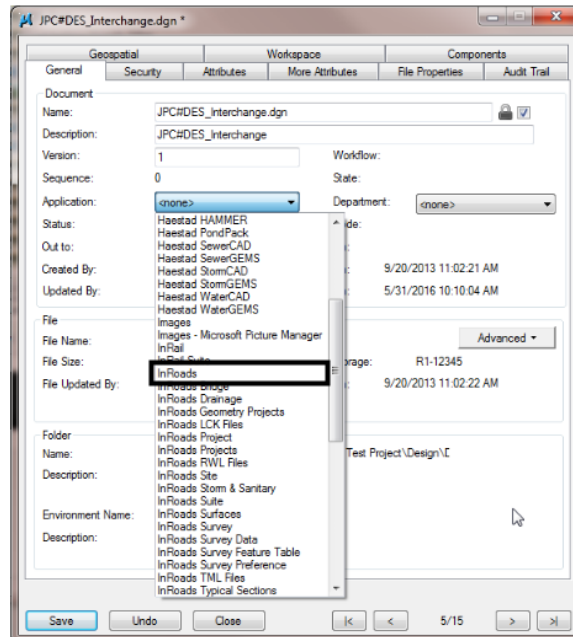
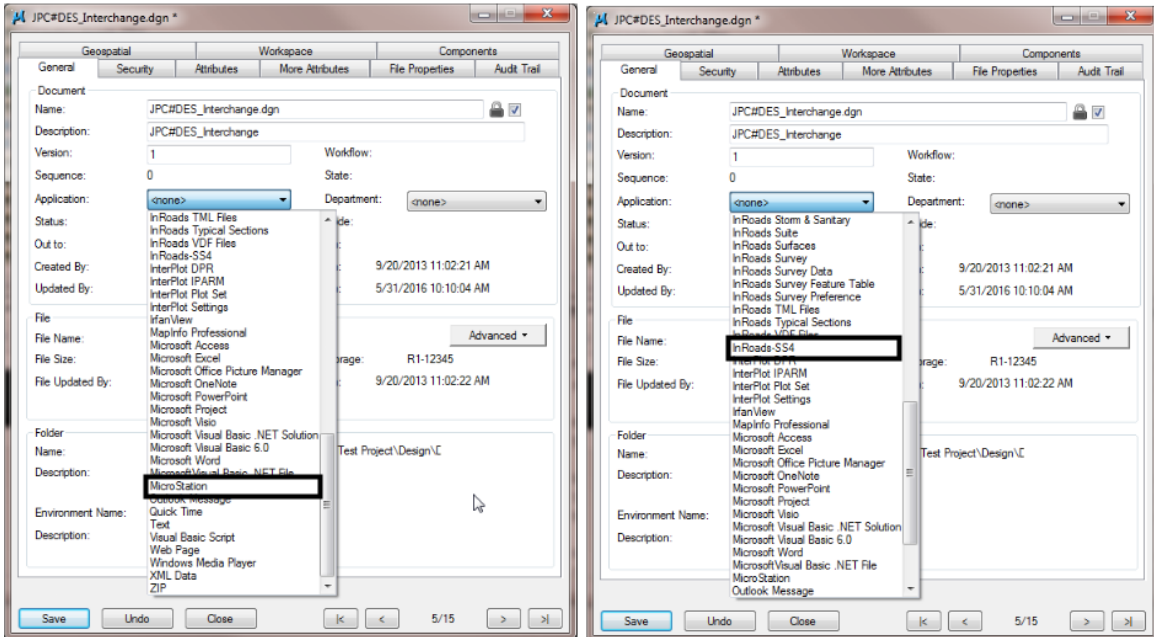
## Starting MicroStation and InRoads From ProjectWise

The steps below describe how to set up a MicroStation DGN file so that it will open MicroStation by itself, MicroStation and InRoads SS4, or MicroStation and InRoads SS2

1. Open ProjectWise and navigate to the folder containing the DGN file to be worked on.
2. In the document list, Right Click on the desired DGN file and select **Properties** from the fly-out menu.



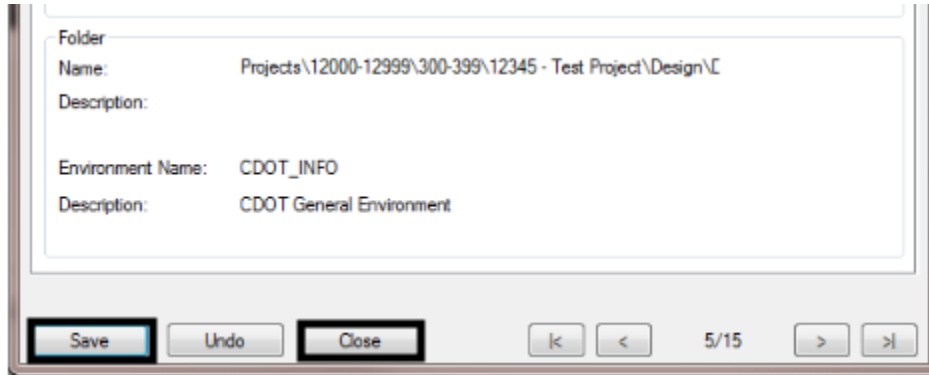
3. In the **Properties** dialog box, use the **Application** drop down menu to select the desired program



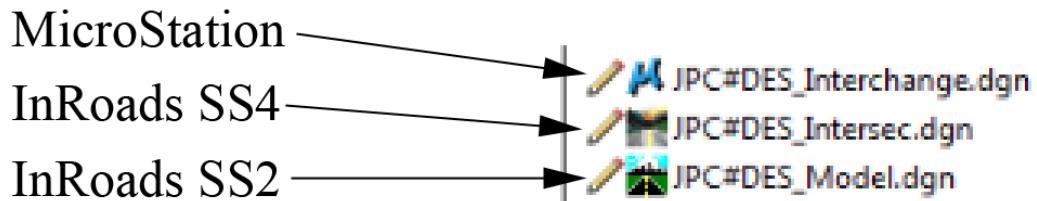
There are three options that should be used, depending on which product is to be used:

- **MicroStation** – This opens the file with MicroStation SS4 but does not allow InRoads SS4 or InRoads SS2 to be opened.
- **InRoads SS4** – This opens the file with MicroStation SS4 and loads InRoads SS4. This is the only way to open a file using InRoads SS4.

- **InRoads** - This opens the file with MicroStation SS4 and provides access to InRoads SS2. InRoads SS2 can be launched from the **Applications** drop down menu on the MicroStation Menu bar. It will not load InRoads SS4.
4. After selecting the desired program from the **Application** drop down menu, Left Click the **Save** then **Close** buttons.



The Icon for the file changes in ProjectWise depending on the application selected. The illustration below show the icon for the 3 options listed above:



5. The file can now be opened using the selected product.

Once a file is opened using a specific product, any other file opened using the **File > Open** command from the MicroStation menu bar will use the same product, regardless of the program set in its Properties. For example (using the illustration above) if the JPC#DES\_Intersec.dgn file is opened using InRoads SS4, then the JPC#DES\_Interchange.dgn file is opened using the **File > Open** command; the JPC#DES\_Interchange.dgn file will be opened in InRoads SS4 even though its application is set to only open MicroStation.

This does not change the application setting on the JPC#DES\_Interchange.dgn file. It merely keeps the product open that was open when the **File > Open** command was selected.

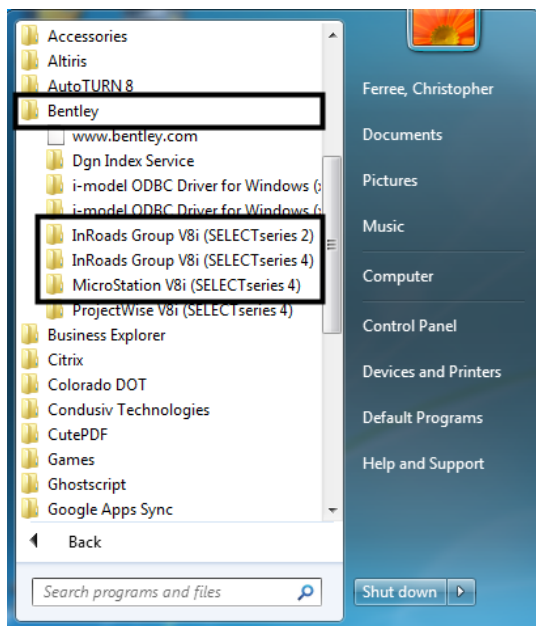
## Starting MicroStation and InRoads Locally

The steps below describe how to open a file using MicroStation by itself, MicroStation and InRoads SS4, or MicroStation and InRoads SS2

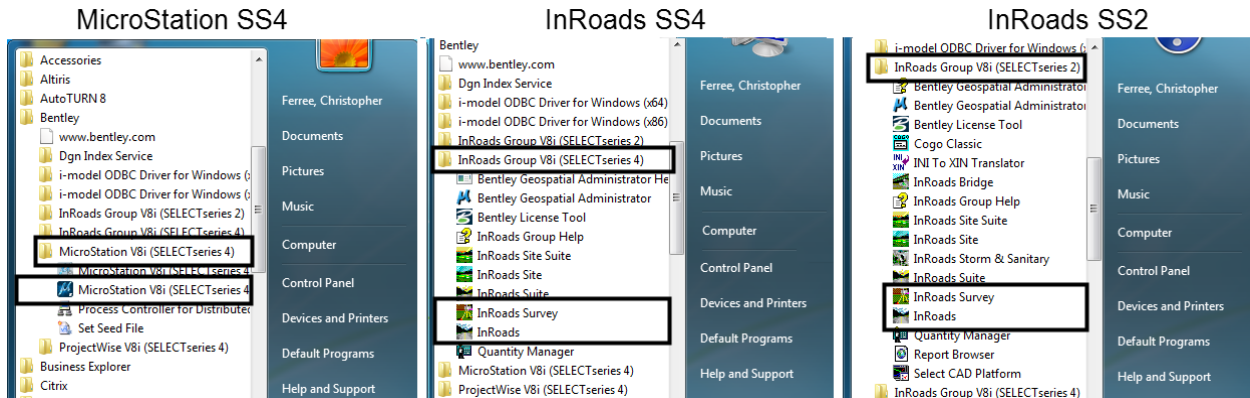
1. Open the **Start Menu** and select **All Programs**.



2. Expand the **Bentley** folder. This show the folders for MicroStation SS4, InRoads SS4, and InRoads SS2.



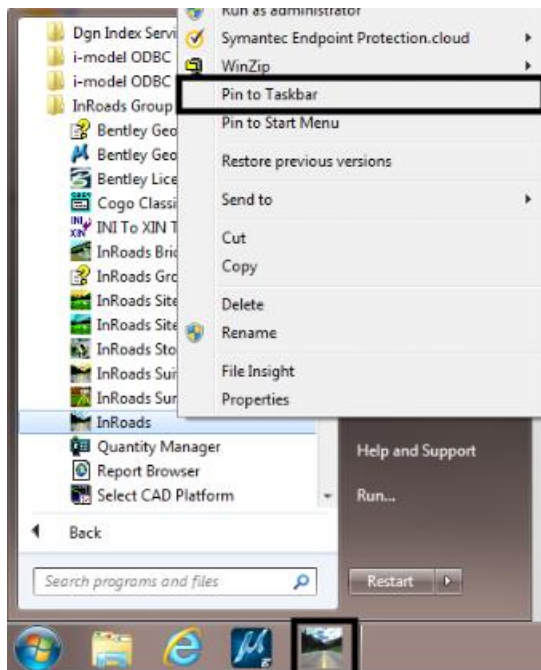
- Open the desired Application. The illustration below show which item to select when opening MicroStation, InRoads SS4, and InRoads SS2.



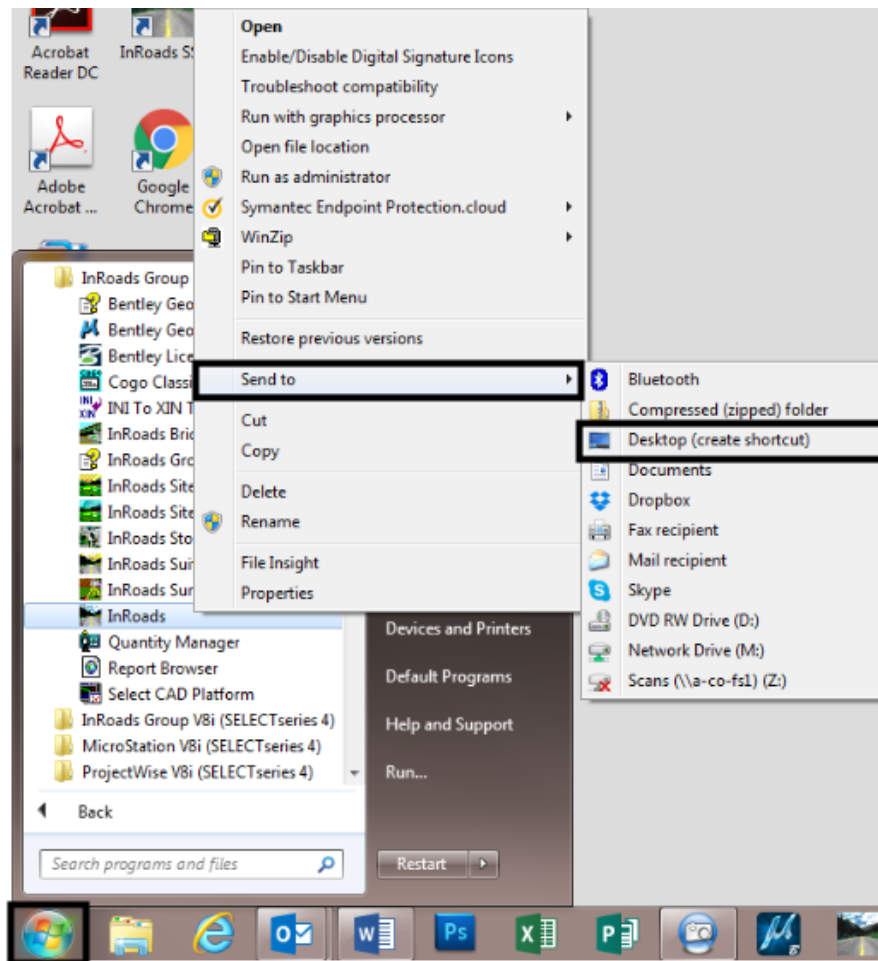
- **MicroStation** – This opens the file with MicroStation SS4 but does not allow InRoads SS4 or InRoads SS2 to be opened.
- **InRoads SS4** – This opens the file with MicroStation SS4 and loads InRoads SS4. This is the only way to open a file using InRoads SS4.
- **InRoads** - This opens the file with MicroStation SS4 and loads InRoads SS2. It will not load InRoads SS4.

These items can be Pinned to the Windows Taskbar or Desktop shortcuts can be created for ease of access.

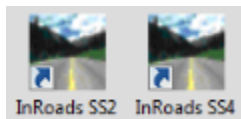
- From the **Start Menu**, navigate to the desired Bentley product.
- Right Click on the desired product and select **Pin to Taskbar** to create the taskbar shortcut.



6. To create a Desktop Shortcut, open the **Start Menu**, navigate to the desired Bentley product.
7. Right Click on the desired product and select **Send To > Desktop (create shortcut)**. This places a shortcut icon for the product on the desktop.



The desktop icons are the same for InRoads SS4 and InRoads SS2. When making desktop shortcuts for InRoads SS4 or InRoads SS2, it will be beneficial to rename those shortcuts, adding SS4 or SS2 to the name by Right Clicking on the desktop shortcut and selecting **Rename** from the fly-out menu.



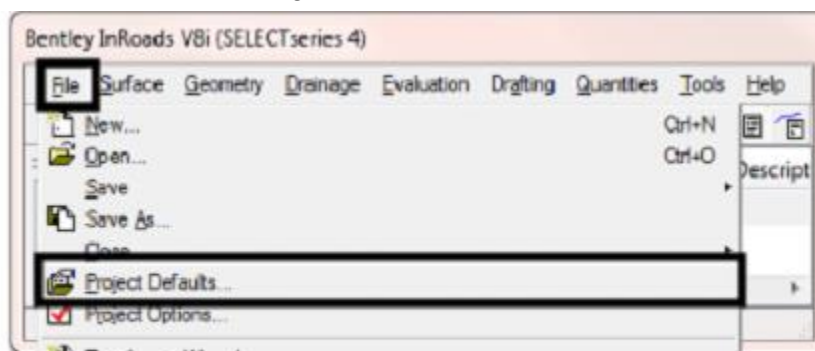
## Adding Project Defaults To InRoads

There are a number of resource files that need to be opened before work begins. This can be accomplished by using Project Defaults. Once created, Project Defaults loads the resource files when InRoads is opened. InRoads SS4 and InRoads SS2 have different resource files so the Project Defaults for each must be created separately.

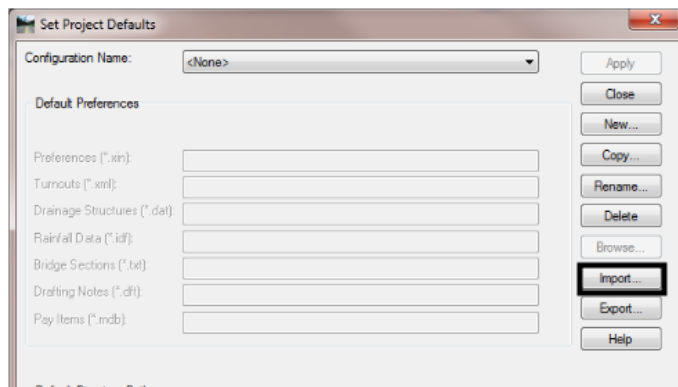
The process is the same for setting up Project Defaults in InRoads SS4 and InRoads SS2. Once created, the same Project Defaults are used when InRoads is launched from ProjectWise or when it is launched locally.

To create the base Project Defaults:

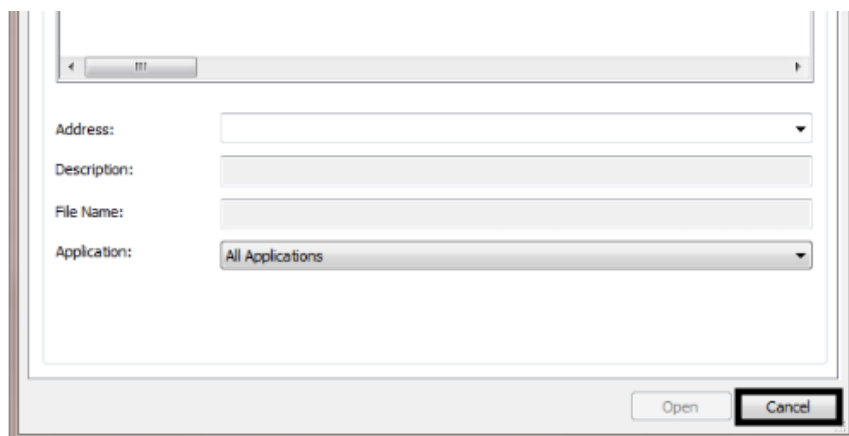
8. Open the desired version of InRoads.
9. From the InRoads Explorer, select **File > Project Defaults** from the menu bar. If the InRoads Explorer is not displayed, from the MicroStation menu bar, select **Applications > InRoads Group > File > Project Defaults**. This displays the **Set Project Defaults** dialog box.



10. In the **Set Project Defaults** dialog box, Left Click the **Import** button. This displays the **Open** dialog box.



11. If the product was launched from ProjectWise, the **Open** dialog box points to ProjectWise for the file location. Because the files are located locally, Left Click the **Cancel** button in the ProjectWise **Open** dialog box. This displays the Windows **Open** dialog box.



12. In the Windows **Open** dialog box, navigate to one of the following folders:

**For InRoads SS4**

**C:\Workspace\Workspace-CDOT\_SS4\Standards\  
Civil-OpenRoads\data\preferences**

**For InRoads SS2**

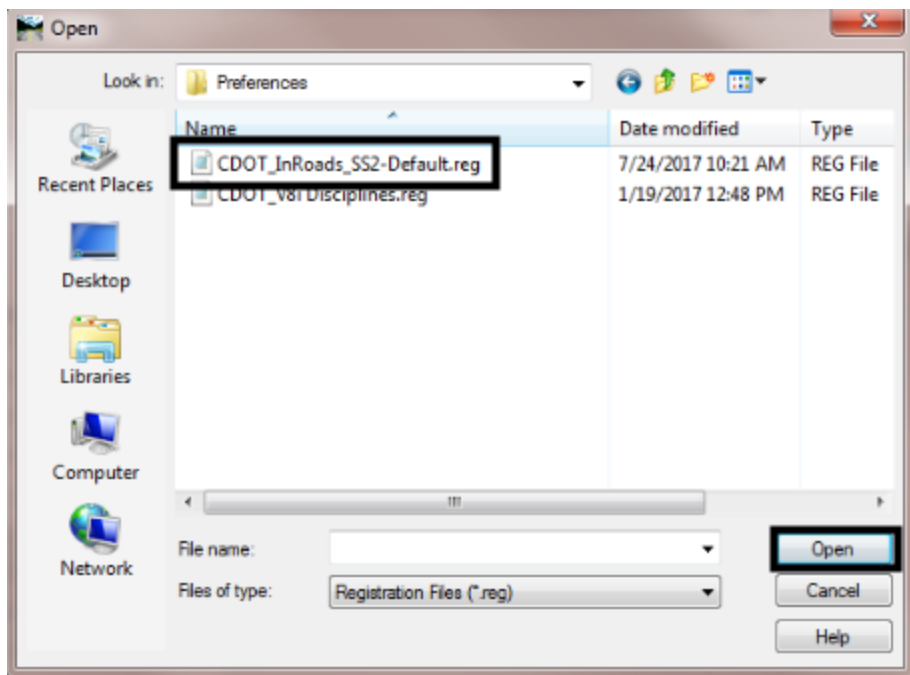
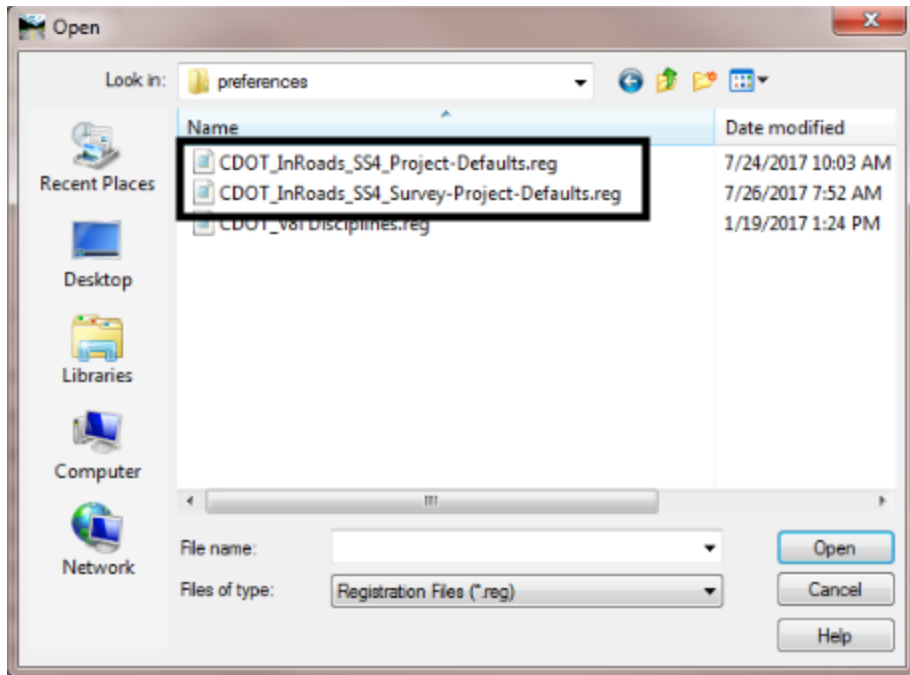
**C:\Workspace\Workspace-CDOT\_SS4\Standards\  
Civil-InRoads\Preferences**

**Please note**, the Survey Group uses a different .REG file than other specialty groups for InRoads SS4.

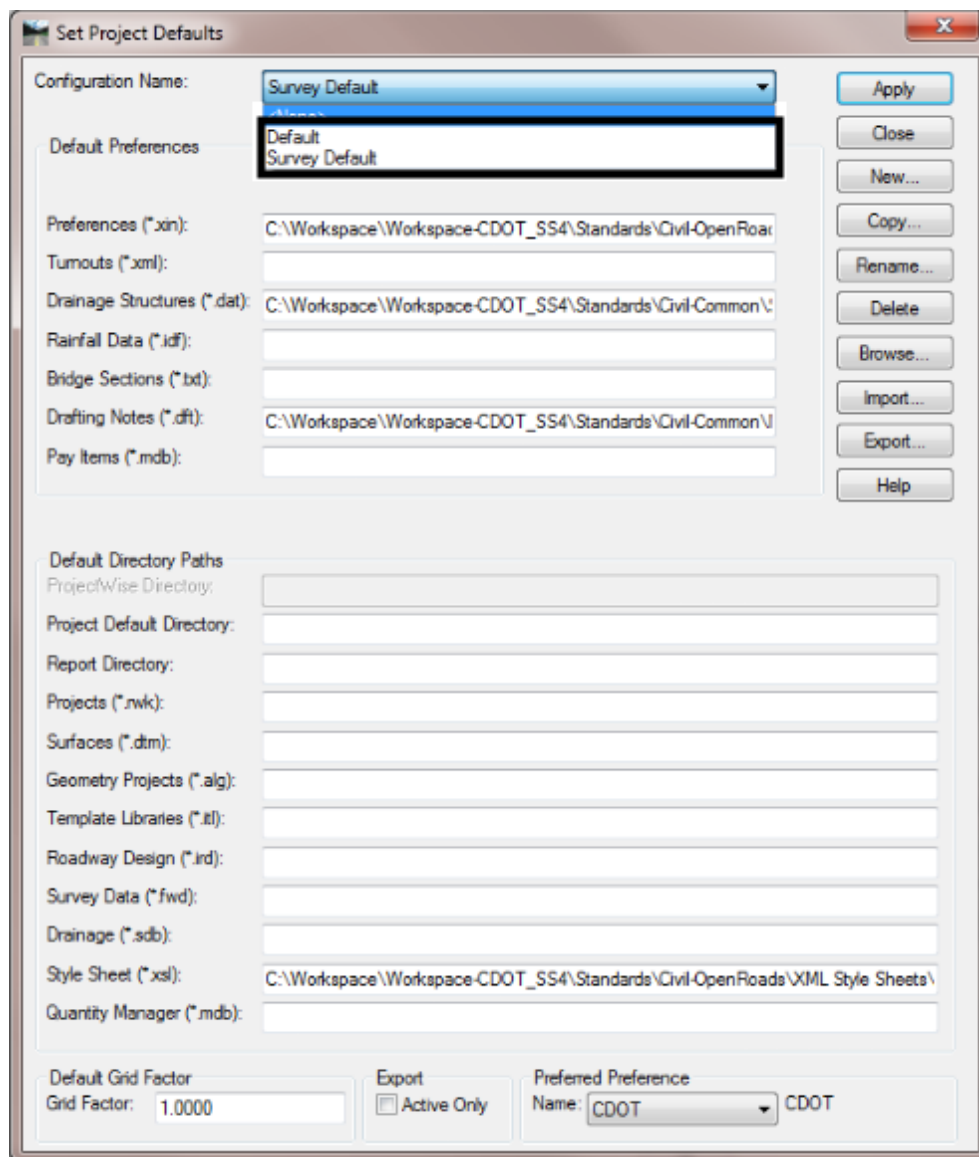
13. Left Click on the .REG file. **For the Survey** group using InRoads SS4 – select the **CDOT\_InRoads\_SS4\_Survey-Project-Defaults.reg** file. **For all other Specialty Groups** select **CDOT\_InRoads\_SS4\_Project-Defaults.reg** file. **When using InRoads SS2, all groups** use the **CDOT\_InRoads\_SS2-Default.reg**.



14. Left Click the **Open** button.



This creates either **Default** or **Survey Default** for the Survey Group under the **Configuration Name** drop down menu.

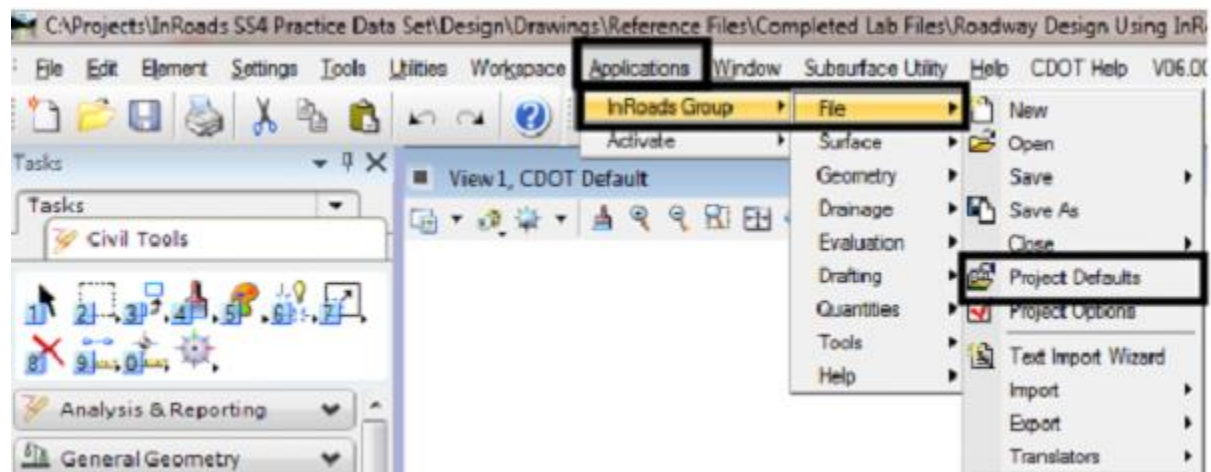
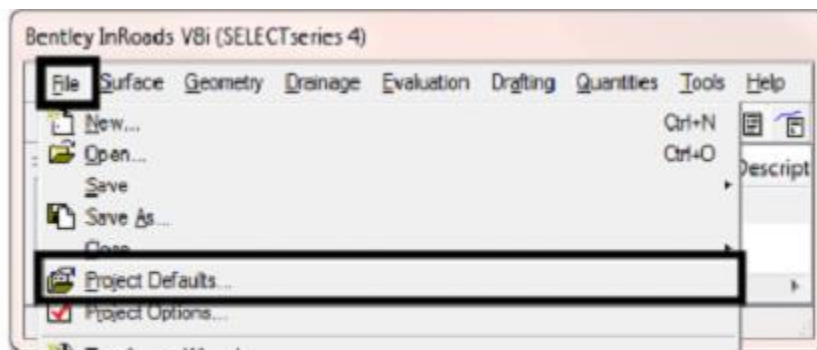


**Note:** Both .REG files can be imported. The Project Default created by the **CDOT\_InRoads\_SS4\_Project-Defaults.reg** is named **Default** and the Project Default created by the **CDOT\_InRoads\_SS4\_Survey-Project-Defaults.reg** is named **Survey Default**.

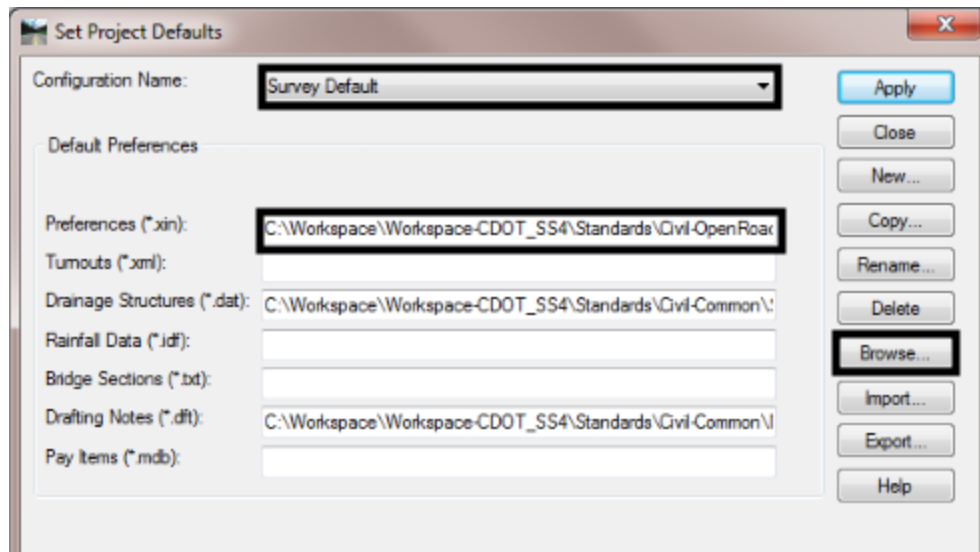
## Updating A Project Default

**Note:** As of September 20, 2017, the *CDOT\_Civil\_SS4\_Survey.xin* has been discontinued. It is replaced by the *CDOT\_Civil\_SS4.xin* file. If you have a Project Default that uses the *CDOT\_Civil\_SS4\_Survey.xin* file, it will need to be updated. Follow the instructions below to update the Project Default with the proper XIN file.

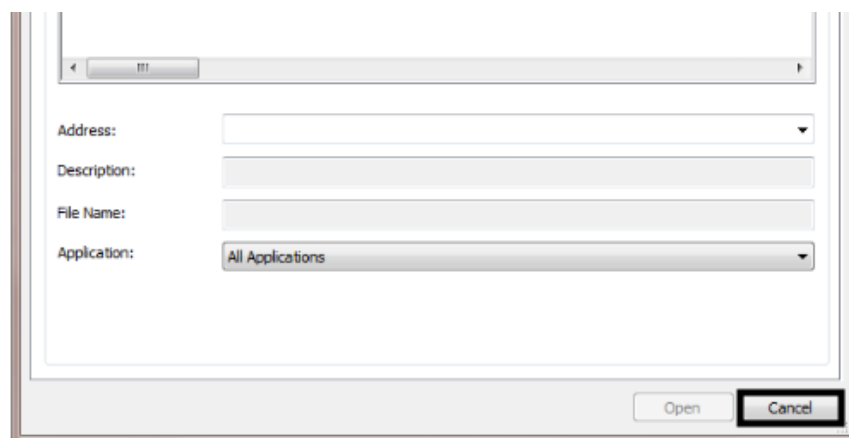
1. Open **InRoads SS4**.
2. From the InRoads Explorer, select **File > Project Defaults** from the menu bar. If the InRoads Explorer is not displayed, from the MicroStation menu bar, select **Applications > InRoads Group > File > Project Defaults**. This displays the **Set Project Defaults** dialog box.



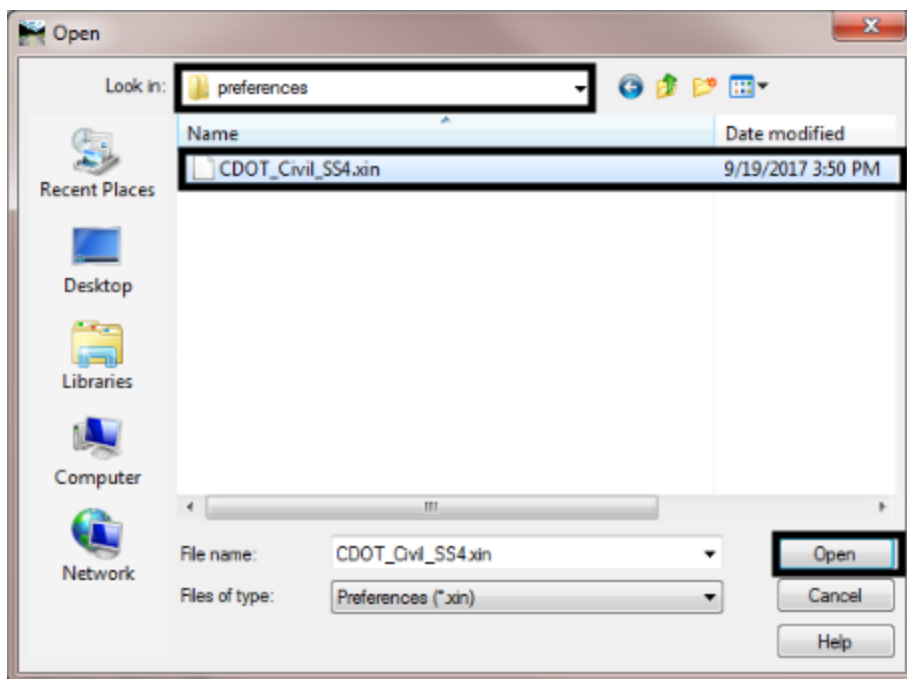
3. In the **Set Project Defaults** dialog box, select the desired project default from the **Configuration Name** dropdown menu. In this example **Survey Default** is used.
4. Left Click the **Preferences (\*.xin)** field.
5. Left Click the **Browse** button. This displays the **Open** dialog box.



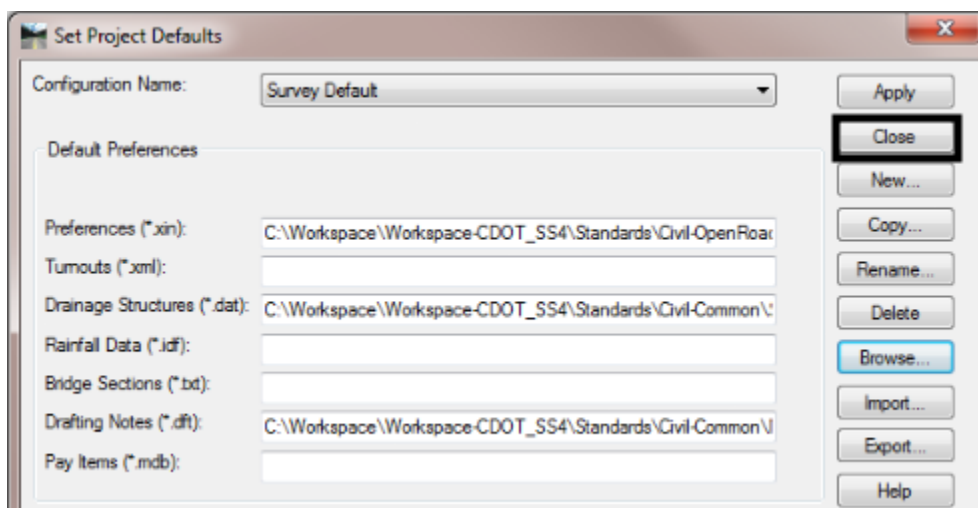
6. If the product was launched from ProjectWise, the **Open** dialog box points to ProjectWise for the file location. Because the files are located locally, Left Click the **Cancel** button in the ProjectWise **Open** dialog box. This displays the Windows **Open** dialog box.



7. In the Windows **Open** dialog box, navigate to one of the following folders:  
**For InRoads SS4**  
**C:\Workspace\Workspace-CDOT\_SS4\Standards\Civil-OpenRoads\data\preferences**
8. Highlight the **CDOT\_Civil\_SS4.xin** file, then Left Click the **Open** button. This updates the project default and dismisses the **Open** dialog box.

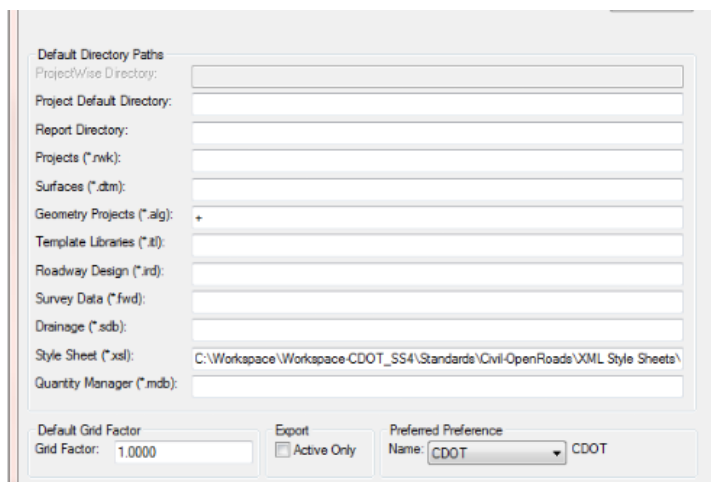


9. Left Click the **Close** button to dismiss the **Set Project Defaults** dialog box. When the **Set Project Defaults** dialog box is closed, the **CDOT\_Civil\_SS4.xin** file is automatically loaded.

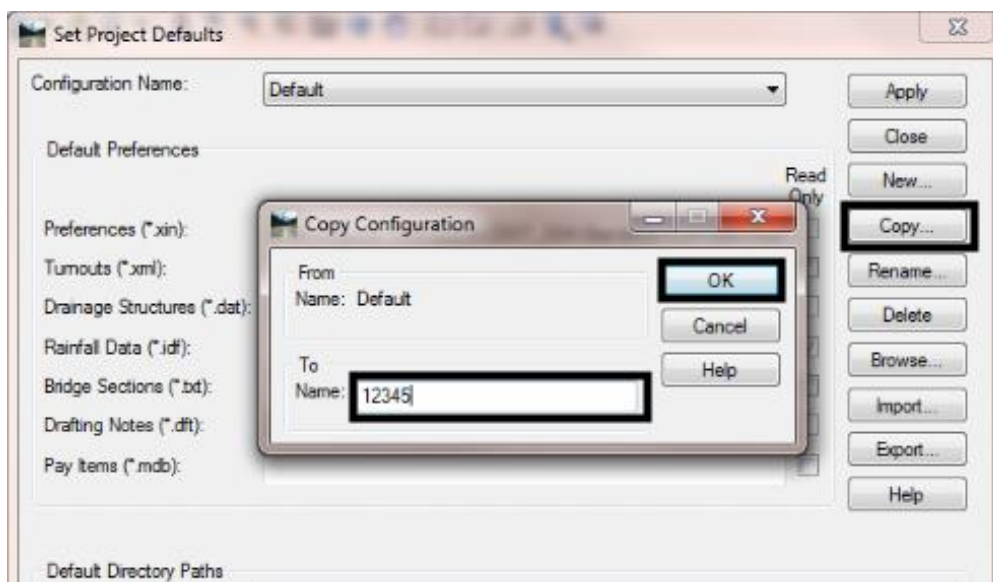


## Making A Project Specific Project Default

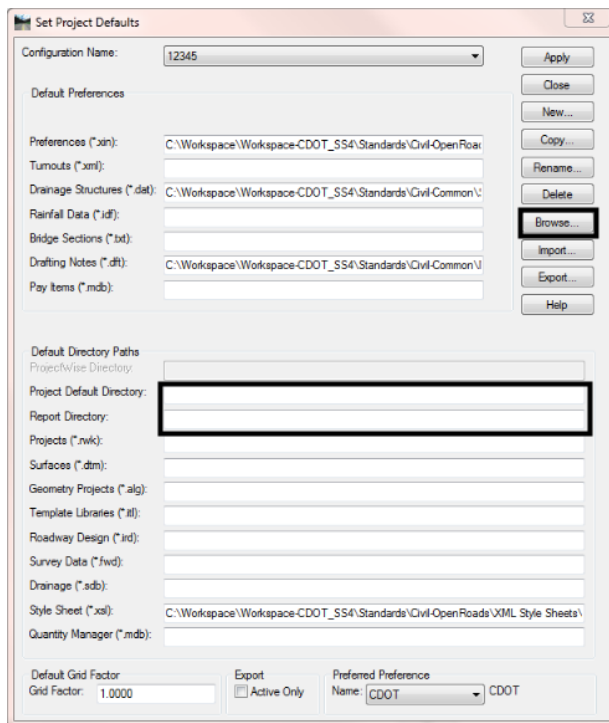
The steps below describe how to create a project specific Project Default. This sets the directory paths to specific folders (in ProjectWise or Locally) for each InRoads data type for your project. This will greatly reduce the time taken navigating to the project directory when opening or saving InRoads data files as the dialog boxes open to the specified folder.



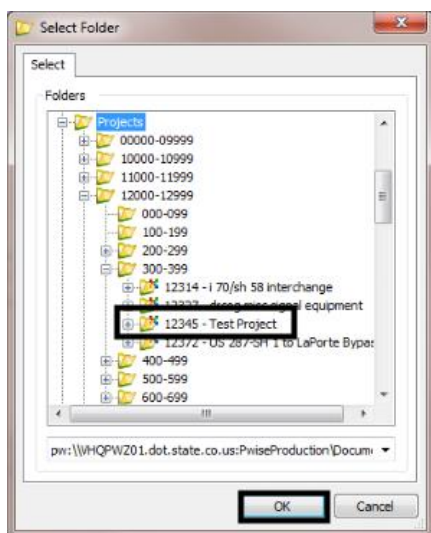
1. Set the **Configuration Name** to **Default** or **Survey Default** as required.
2. Left Click the **Copy** button. This displays the **Copy Configuration** dialog box.
3. In the **Copy Configuration** dialog box, key in the desired name. This should include the JPC number for the project.
4. Left Click the **OK** button. This creates the new Project Default and dismisses the **Copy Configuration** dialog box.



- To set the default directory path, Left Click in the **ProjectWise Directory** field (or the **Project Default Directory** if the files are stored locally) then Left Click the **Browse** button. This displays the **Select Folder** dialog box. This should be set to the root project folder.



- In the **Select Folder** dialog box, navigate to the desired folder then Left Click the **OK** button. This dismisses the **Select Folder** dialog box and adds the path to the Project Default field. The Project Default path should be set to the root project folder. In this example the default directory path is set to: **CDOT\_Active\_Products\Documents\Projects\12000-12999\300-399\12345 - Test Project.**



Directory locations can also be set for specific InRoads data types. These are done in the same manner as described above. Typically, ALG, ITL, and IRD should be pathed to the **JPC#/Design/InRoads/** folder.

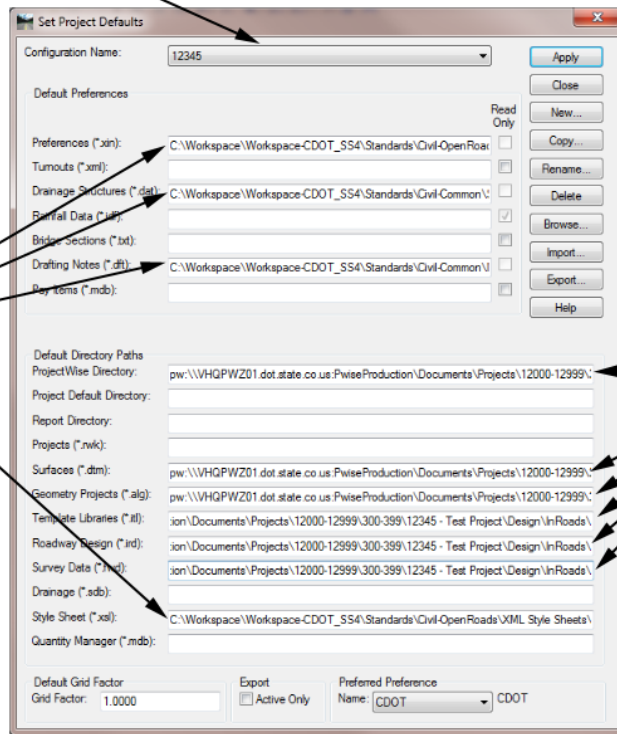
For specialty groups other than Survey, path the DTM to the root project directory. This is because DTM data is stored either in the **Design/InRoads** folder for proposed DTMs and the **ROW/Survey/InRoads/DTM/** folder for existing DTMs.

For Survey, path the DTM to **JPC#/ ROW/Survey/InRoads/DTM/** and **JPC#/ ROW/Survey/InRoads/Field\_Books/** for FWDs.

Below is an example of a completed project specific Project Default. The JPC number was used as the Project Default name. The project data is stored in ProjectWise, so the paths to the project specific data point to the ProjectWise directory. The resource files, common to all projects, are located in the local workspace.

Project specific Name

Common resource files



Project specific data

When a file is closed, InRoads remembers which Project Default was active and the next time InRoads is opened, that same Project Default is used to open the resource files and set paths to project data.