

Upgrading CDOT ProjectWise Projects to OpenRoads Designer 2021 R1 (10.10)

The CDOT standards have been updated to use the new OpenRoads Designer Connect Edition 2021 Release 1, 10.10.01.03 (ORD 10.10). This major update provides many enhancements, including improved plans production capabilities. The ORD 10.10 update does include a change to the underlying design file schema to support the new functionality and will require a one-time update of the ORD 10.08 design files. The update process and the impact on your design projects is covered in this document.

NOTE: *Both versions of ORD can be installed on your computer, however, you CANNOT mix the two versions amongst a project. Users have two ORD options for working on Projects:*

- 1. Upgrade/Install the new ORD 10.10 version and update the project to the new version.*
- 2. Keep the project in ORD 10.08. No modifications to the project are needed.*

*The decision to move a project forward to the newest release of OpenRoads (ORD 10.10) should be made by the **Project Manager** or the **Resident Engineer** for the project. BEFORE moving projects forward please discuss your options as a team, including ALL other design team members and disciplines. If a project has been updated to use ORD 10.10 then ALL users working on that project will need to have ORD 10.10 installed.*

For Project Managers/Resident Engineers ONLY:

Updating the ProjectWise Project to use the CDOT 10.10 Managed Workspace:

1. Ensure **ALL** Design Team members for the project have installed ORD 10.10 from the software center.
2. Navigate to **[Your ProjectWise Project]\05 Project Standards** folder. In that folder, you will see a **WorkAreaPWSetup_Predefined_[ProjectNo].cfg** file. Open this file with Notepad.
3. In this file, you will see an area for the Configuration selection. Under the line *Choose the appropriate Configuration Name* you will put a # symbol (comment out) in front of the **_DYNAMIC_CONFIGURATIONNAME = 2020 R2 Configuration** line and remove the # symbol from the **_DYNAMIC_CONFIGURATIONNAME = 2021 R1 Configuration** line. The updated .cfg file will look like the image below:

```

#-----
# _DYNAMIC_CONFIGS
#-----
# The "_DYNAMIC_CONFIGS" variable can be appended in each cfg file to track
# loading of cfgs and other notations.
#-----
_DYNAMIC_CONFIGS > WorkArea PWSetup Predefined 24232 Version 1.7.3

#-----
# Workspace PWSetup Workspace Specification
#-----
#
# Variables Established in the file will be passed to the Common_Predefined.cfg
#
#     _USTN_WORKSETNAME
#     Default was set to the Work Area or Parent Work Area folder name in Common_Predefined.cfg
#
#-----

%if defined (_VERSION_8_11) # If defined, a V8i product was launched
    # Uncomment the following line if the Work Area does not support MicroStation V8i or InRoads '
    #%error This WorkArea not configured for V8i --- Please contact CDOT CADD.
%elif defined (_VERSION_10_0) # If defined, a CONECT Edition product was launched
    # Uncomment the following line if the Work Area does not support CONNECT Edition products
    #%error This WorkArea not configured for CONNECT Edition --- Please contact CDOT CADD.

    # Set the following line to the desired WorkSet Name (default is $_DYNAMIC_WORKAREA_NAME)
    _USTN_WORKSETNAME = 24232

    # Choose the appropriate Configuration Name
    #_DYNAMIC_CONFIGURATIONNAME = 2020 R2 Configuration
    #_DYNAMIC_CONFIGURATIONNAME = 2021 R1 Configuration
    %lock _DYNAMIC_CONFIGURATIONNAME

%endif

```

4. Save the .cfg file and check it in to ProjectWise. The Design Team Members can now use ORD 10.10 for this project.
5. If you are not comfortable making this update, please submit a Mojo HelpDesk ticket and the CADD Support Team will help you move forward. <https://cdot.mojohelpdesk.com/>

NOTE: For a video on the steps above click the link below:

https://drive.google.com/file/d/11OJXHL29yELvvKNbUm_ZcOTe8-A9nFbm/view

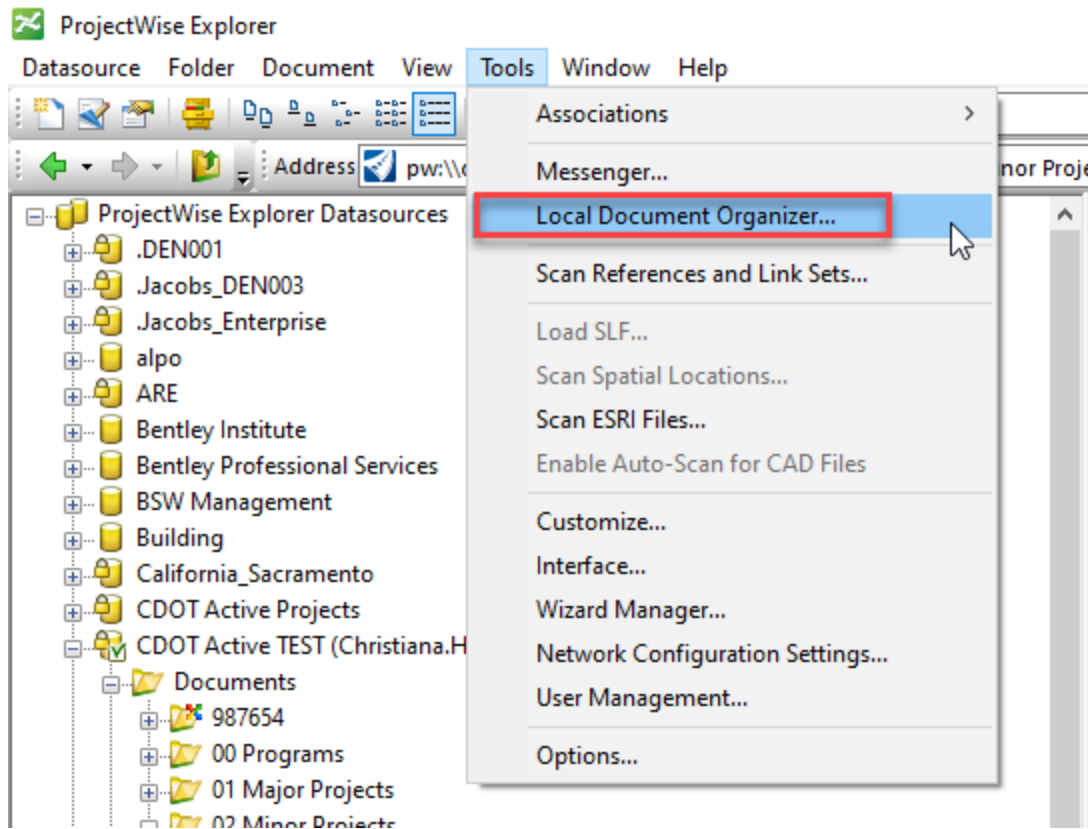
For ALL Design Team Members:

Purging the old 10.08 Workspace from the local machine:

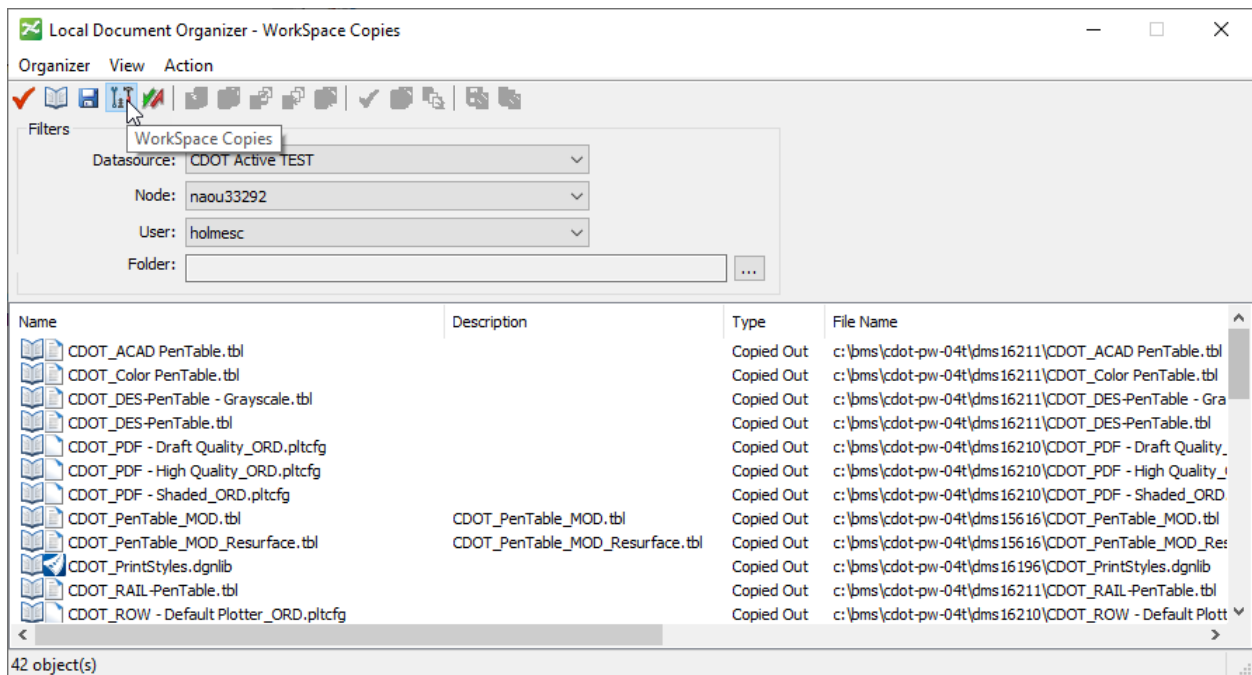
Once the Project has been updated to use the ORD 10.10 Managed Workspace, the user should do a purge of the old workspace files using the steps below:

1. Make sure that **OpenRoads Designer** is **NOT** open.
2. Open **ProjectWise Explorer**.

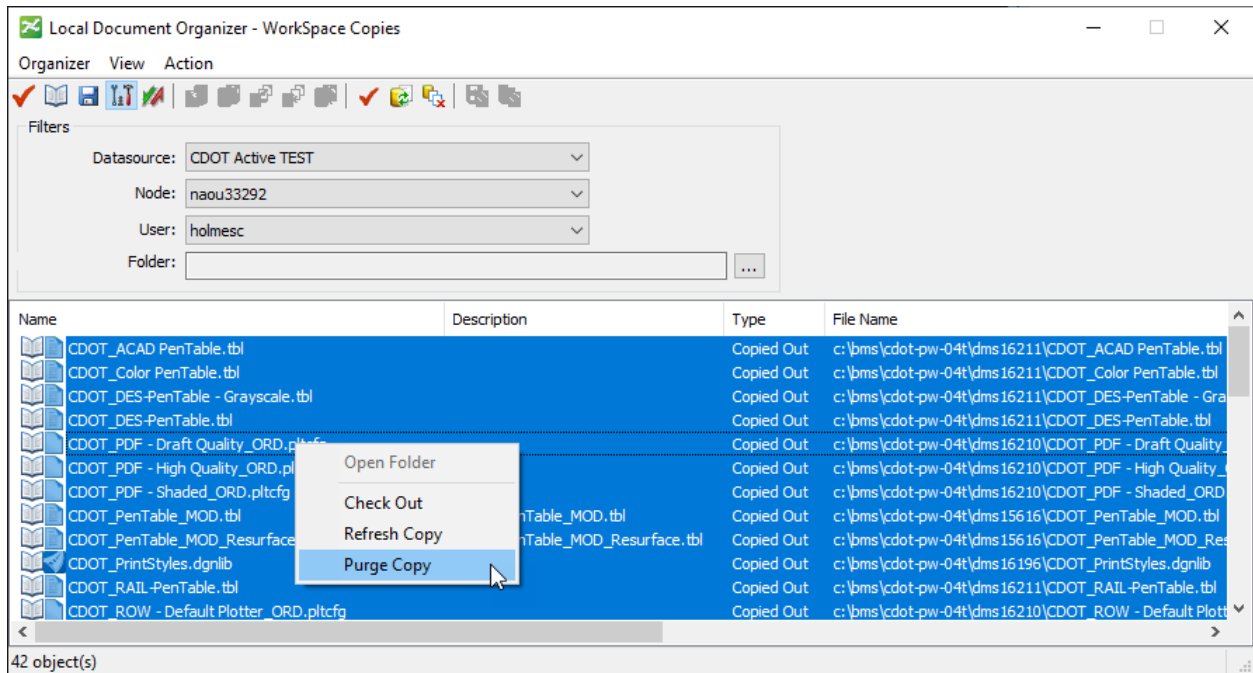
- Once **ProjectWise Explorer** opens, go to **Tools > Local Document Organizer**.



- In the **Local Document Organizer** dialog, select the **Workspace Copies** icon.



- In the *file field* at the bottom of the **Local Document Organizer** dialog, select all the Workspace files (*Ctrl+A* can be used to select all files).
- Right-click* and select **Purge Copy**.

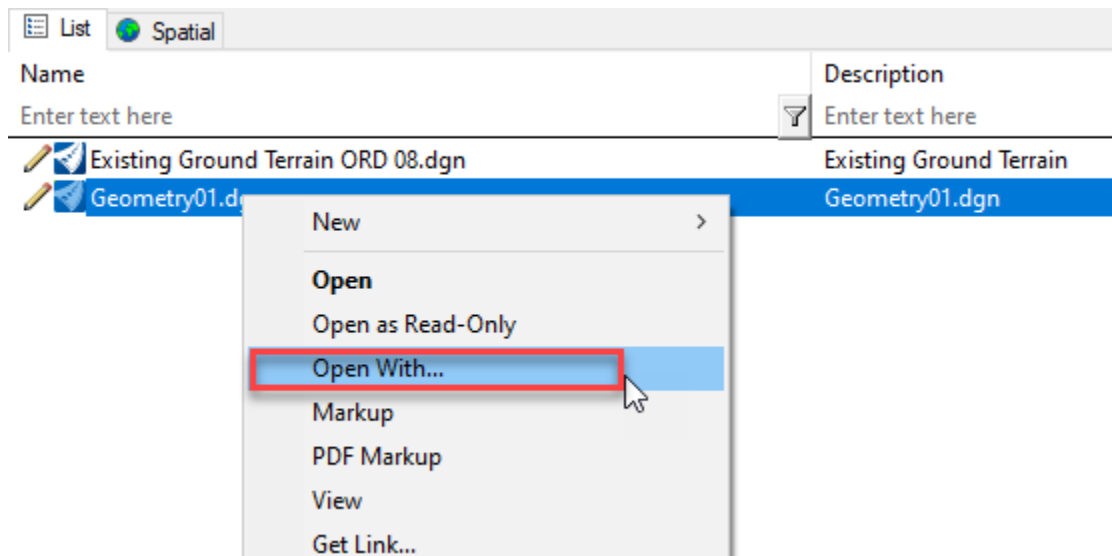


NOTE: This should only be done ONCE, after you have ORD 10.10 installed.

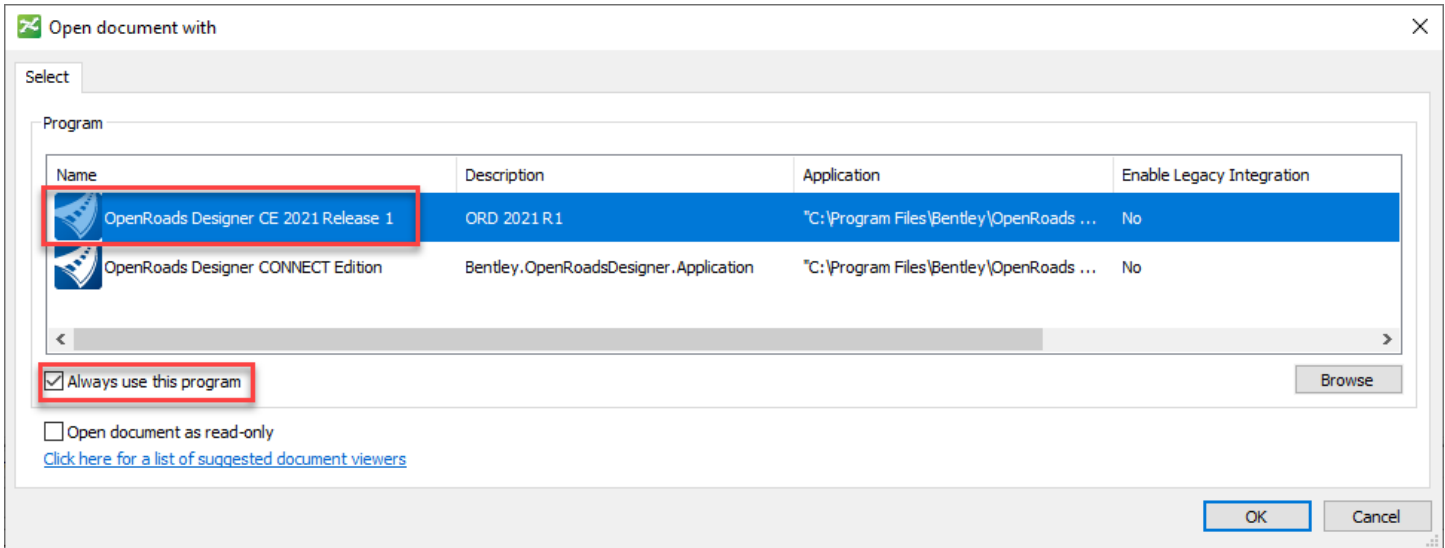
Updating Project DGN files from ORD 10.08 to 10.10:

After ORD 10.10 has been installed AND the Project has been updated to use the ORD 10.10 Managed Workspace in ProjectWise, the Design Team can move forward with updating the schema of the Project DGN files.

1. To open the Project .dgn files with ORD 10.10, open ProjectWise Explorer and navigate to the desired file
2. Right-click on the .dgn file and select **Open With...**

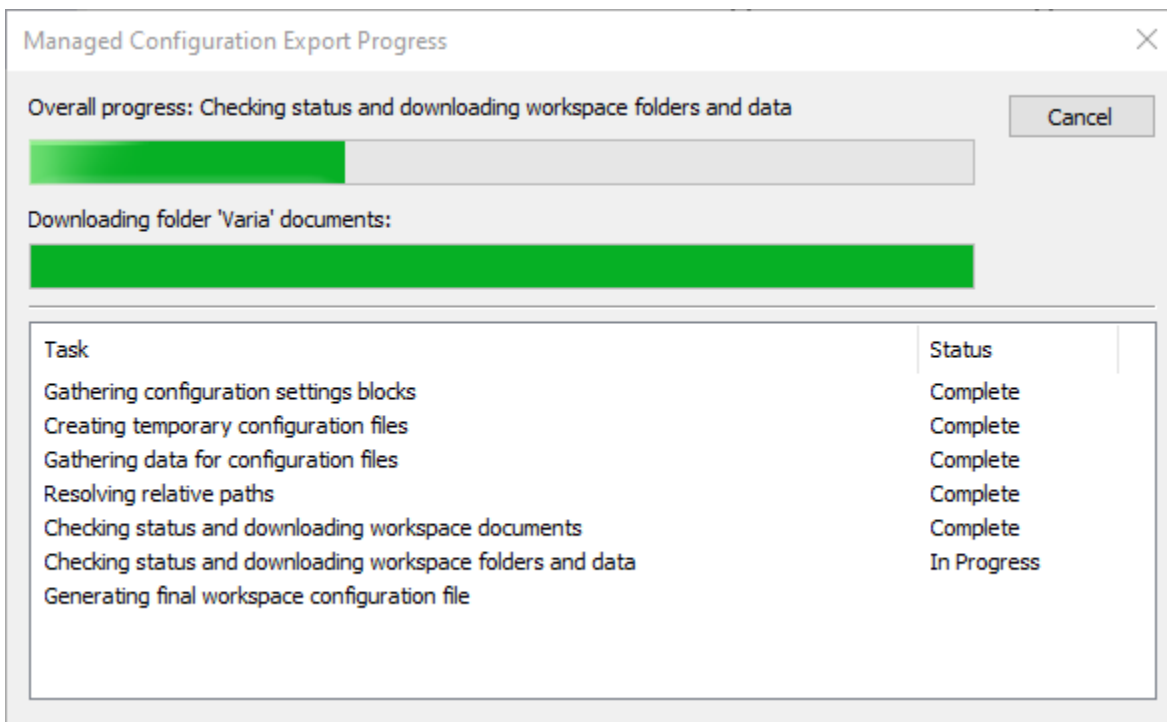


3. In the *Open document with* dialog, select **OpenRoads Designer CE 2021 Release 1** and *toggle on Always use this program*.

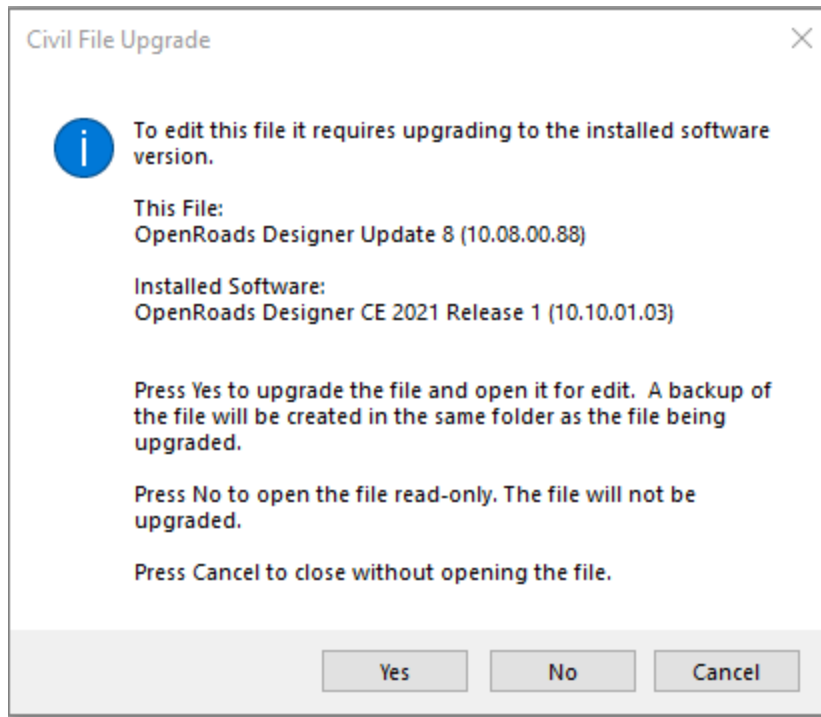


4. The first time you open a *.dgn* file using the new ORD 10.10 Workspace it will take longer than normal, as the files from the new workspace are downloading.

***NOTE:** This should only happen the first-time a .dgn file is opened with this workspace.*



5. When ORD 10.10 opens, you will be prompted that the file needs to be upgraded as shown below. Click **Yes** and the file will be upgraded to the latest civil schema as the file is opened. Each file in the Project should be opened and upgraded to the ORD 10.10 version.

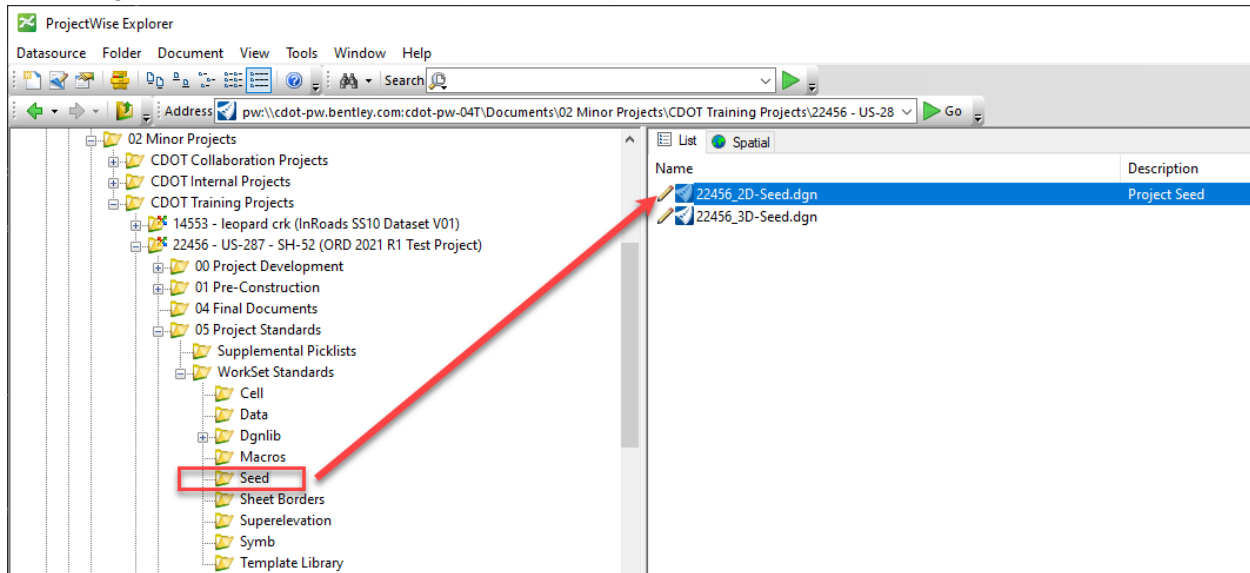


NOTE: This will only occur the first time a file is opened in ORD 10.10. After the file is upgraded, it will open as usual.

Updating the Project Specific Seed and/or Library files from ORD 10.08 to 10.10:

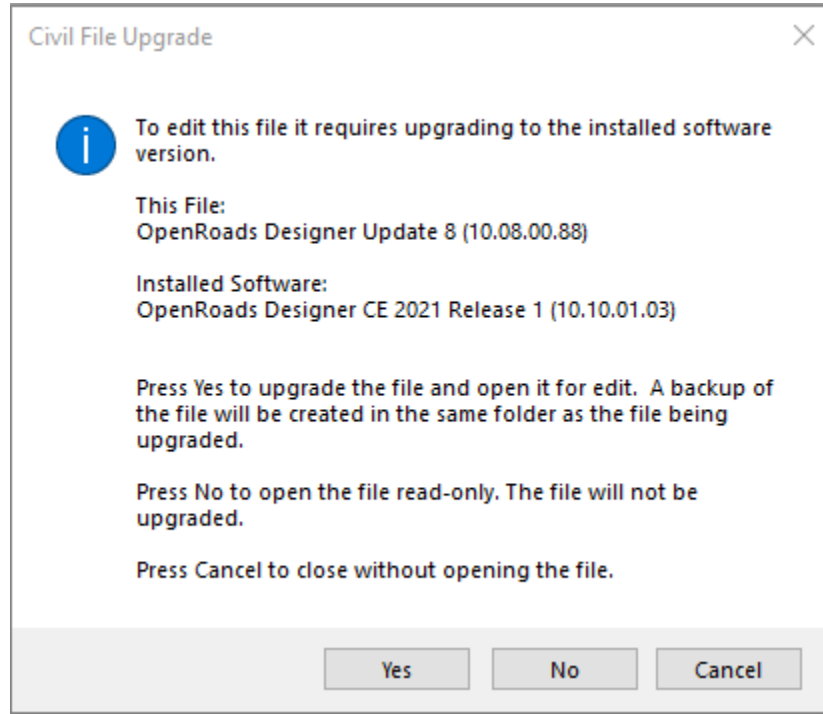
If Project specific seed file(s) or libraries have been created or added to the WorkSet (Project), those files should also be opened and updated to latest version of ORD 10.10. To update the Project specific seed file, follow the steps below:

1. Open ProjectWise Explorer.
2. Navigate to *[Your ProjectWise Project]\05 Project Standards\WorkSet Standards\Seed*



3. Double-click on the Seed File .dgn to open it with ORD 10.10.

4. You will be prompted that the file needs to be upgraded as shown below. Click **Yes** and the file will be upgraded to the latest civil schema as the file is opened.



5. Repeat this for any other Project specific libraries/WorkSet files.

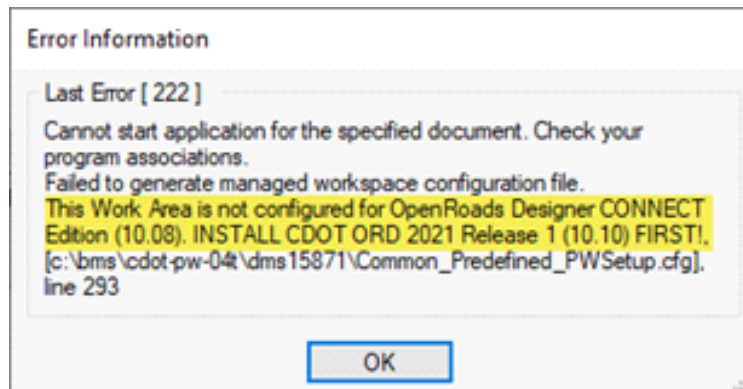
NOTE: For a video on the steps above click the link below:

<https://drive.google.com/file/d/1FuWk3oKL4L5dFwX3QC42pCc0YFN-5JDo/view>

General Comments for moving to ORD 10.10:

- **Scenario 1: User does not have ORD 10.10 installed but the Project has been updated to use ORD 10.10.**

If the Project has been updated to use ORD 10.10 in ProjectWise, and the Design Team Member has not installed ORD 10.10, they will receive an error message when opening files, stating:

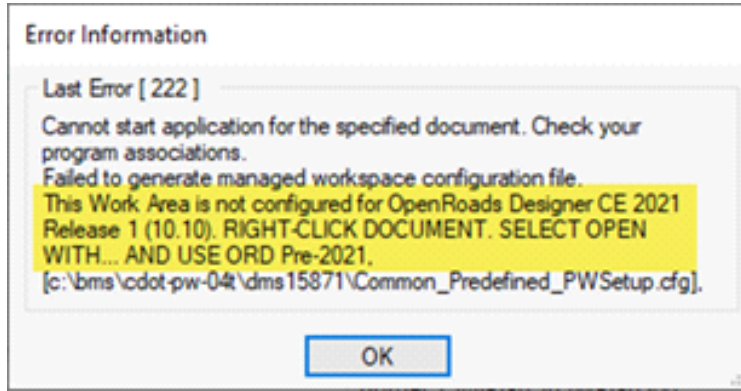


“Cannot start application for the specified document. Check your program associations. Failed to generate managed workspace configuration file. This Work Area is not configured for OpenRoads Designer CONNECT Edition (10.08) INSTALL CDOT ORD 2021 Release 1 (10.10) FIRST!”

- **Scenario 2: User has ORD 10.10 installed but the Project has not been updated to use ORD 10.10.**

If a user has ORD 10.10 installed and the Project has not been updated to use the ORD 10.10 Managed Workspace, the user will receive an error message when opening the file, stating:

“Cannot start application for the specified document. Check your program associations. Failed to



generate managed workspace configuration file. This Work Area is not configured for OpenRoads Designer CE (10.10) RIGHT-CLICK DOCUMENT, SELECT OPEN WITH...AND USE ORD Pre-2021.