











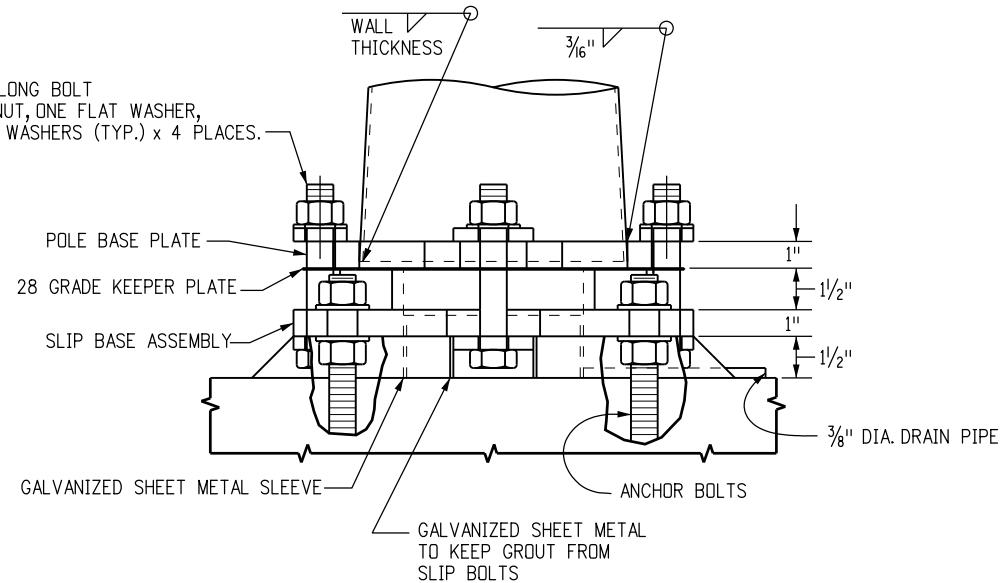








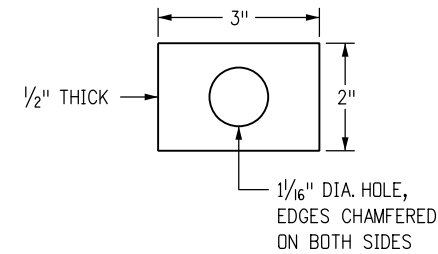
1"-8UNC x 6 1/2" LONG BOLT  
WITH ONE HEX NUT, ONE FLAT WASHER,  
AND TWO PLATE WASHERS (TYP.) x 4 PLACES.



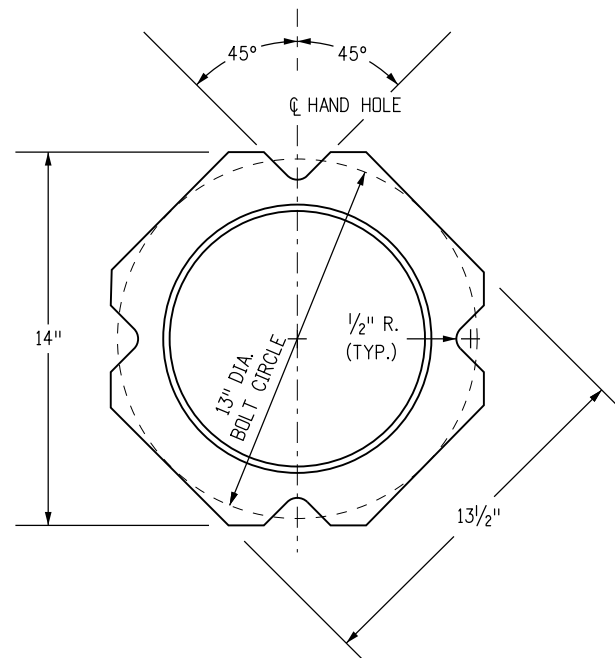
**BREAK-AWAY BASE  
(FOR INFORMATION ONLY)**

**NOTES**

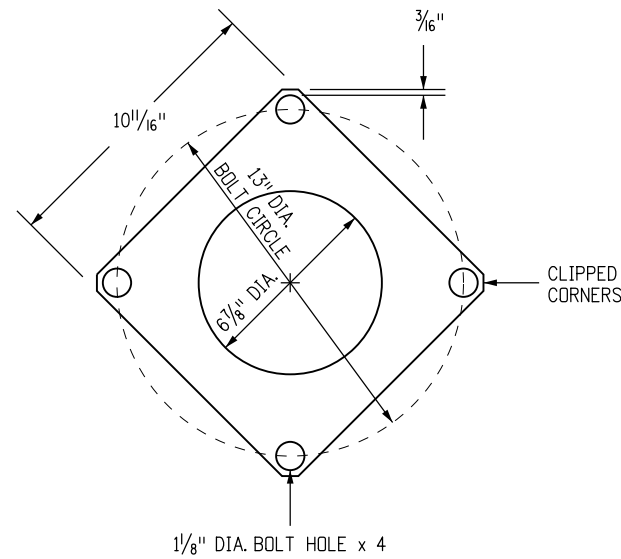
1. POLE BASE PLATE SHALL CONFORM TO ASTM A 572, GRADE 42.
2. BOTTOM PLATE OF SLIP BASE ASSEMBLY SHALL CONFORM TO ASTM A 572, GRADE 50.
3. ALL STRUCTURAL STEEL SHALL BE GALVANIZED AFTER FABRICATION IN CONFORMANCE WITH ASTM A 123. ALL CONTACT AREAS OF THE STRUCTURAL STEEL SHALL BE FREE OF GALVANIZING BEADS AND RUNS.
4. SLIP BASE CONNECTING HARDWARE SHALL CONFORM TO ASTM A 325, AND SHALL BE ELECTROPLATED CADMIUM IN CONFORMANCE WITH ASTM B 766 TYPE NS.
5. KEEPER PLATE SHALL CONFORM TO ASTM A 653, GRADE 33, AND COATING G 90.



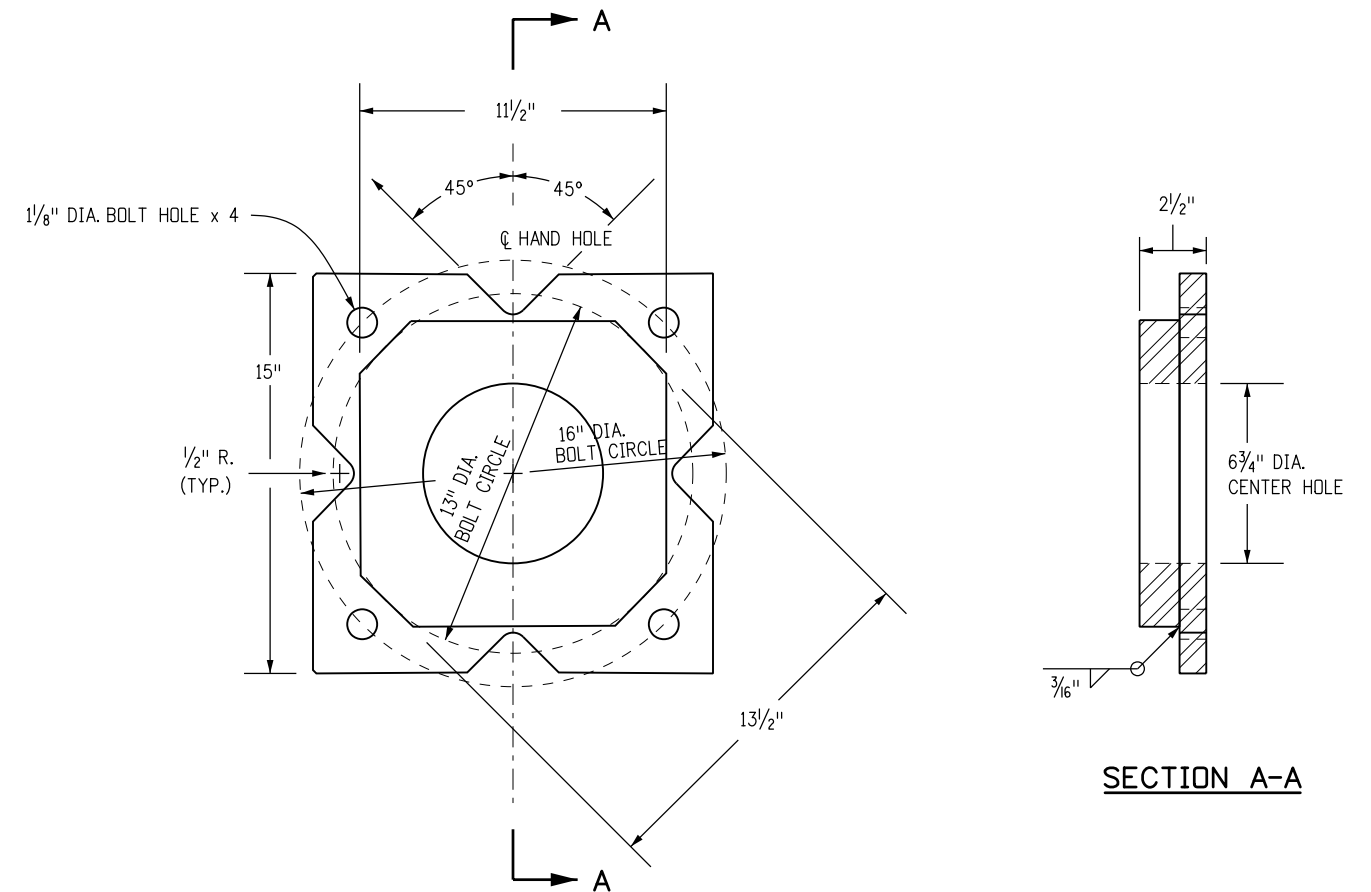
**PLATE WASHER**



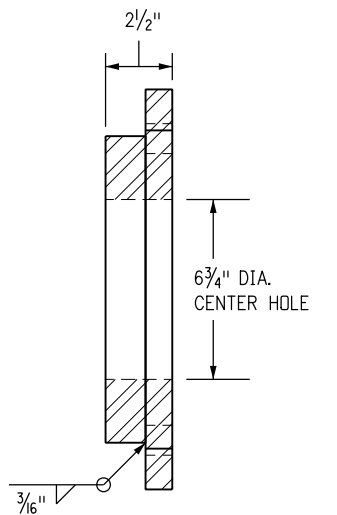
**LIGHT STANDARD BASE PLATE**



**28 GRADE KEEPER PLATE**



**SLIP BASE ASSEMBLY**



**SECTION A-A**

**OPTIONAL BREAK-AWAY TYPE BASE**

Computer File Information	
Creation Date: 07/31/19	
Designer Initials: JBK	(R-X)
Last Modification Date: 07/31/19	(R-X)
Detailer Initials: LTA	(R-X)
CAD Ver.: MicroStation V8 Scale: Not to Scale Units: English	(R-X)

Sheet Revisions	
Date:	Comments

Colorado Department of Transportation  
 2829 West Howard Place  
 CDDT HQ, 3rd Floor  
 Denver, CO 80204  
 Phone: 303-757-9021 FAX: 303-757-9868

Project Development Branch **JBK**

**ROAD  
CLOSURE GATE**

Issued by the Project Development Branch: July 31, 2019

STANDARD PLAN NO. <b>M-607-15</b>
Standard Sheet No. 9 of 9
Project Sheet Number: