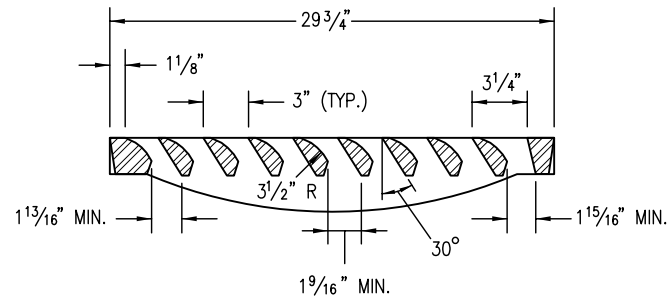
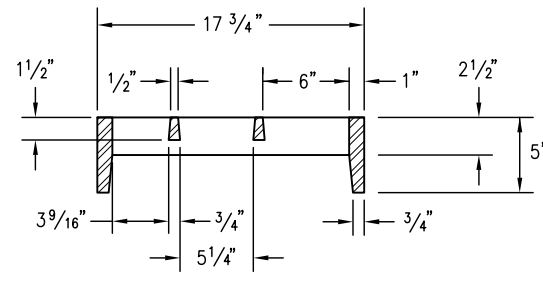


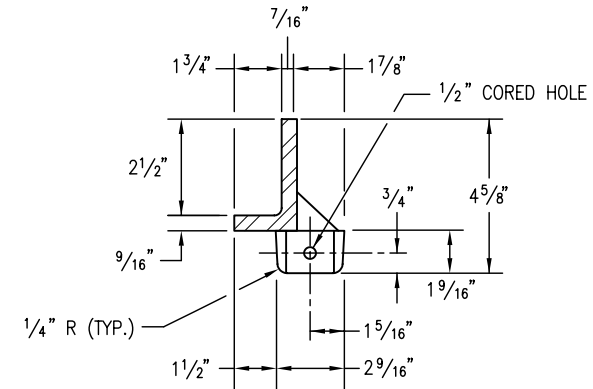
**DETAIL A**  
**BOLT SLOT AT CORNER (TYP.)**



**SECTION A-A**



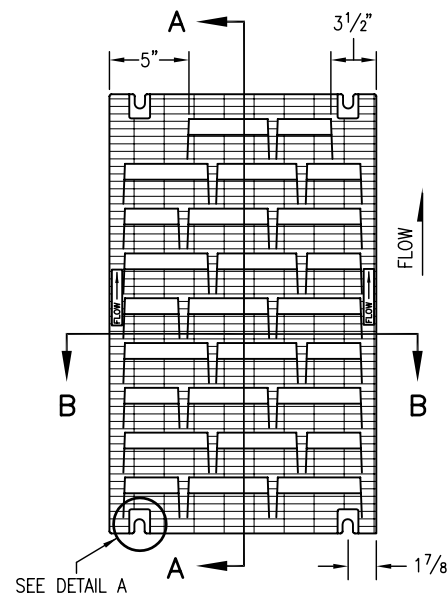
**SECTION B-B**



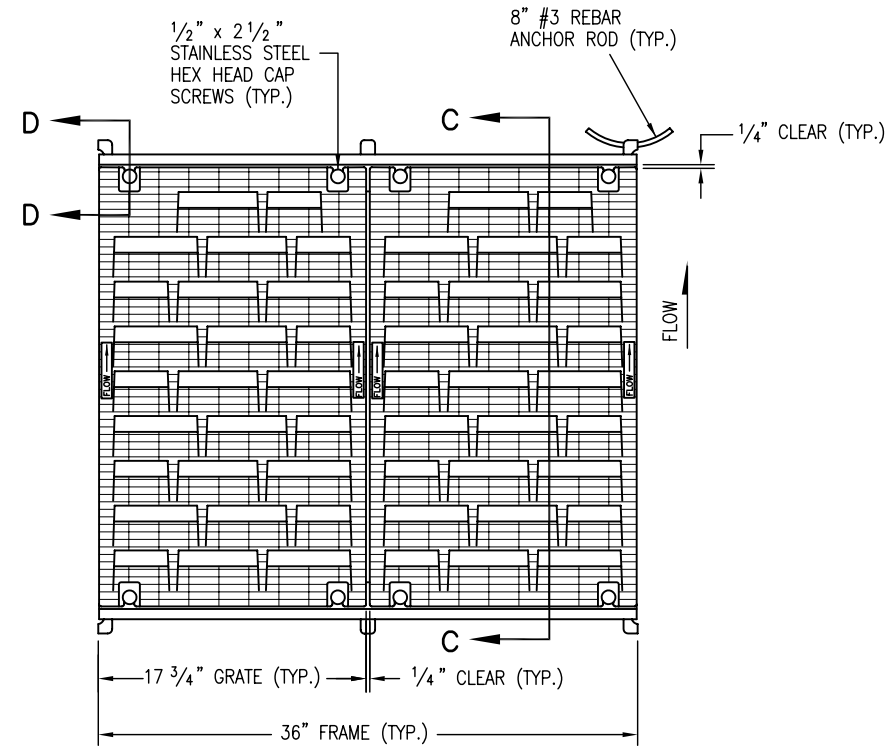
**DETAIL B**

**NOTES**

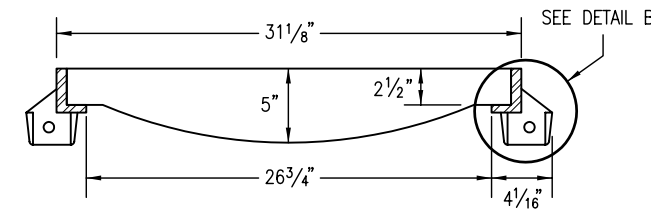
1. FREE OPEN AREA: 190 SQ. IN./GRATE.
2. MATERIAL: CAST GRAY IRON ASTM A-48 CLASS 35B.
3. FINISH: NO PAINT.
4. WEIGHT: GRATE 170 LBS. EACH; FRAME 29 LBS. EACH.
5. ALL REINFORCING BARS SHALL BE EPOXY COATED.



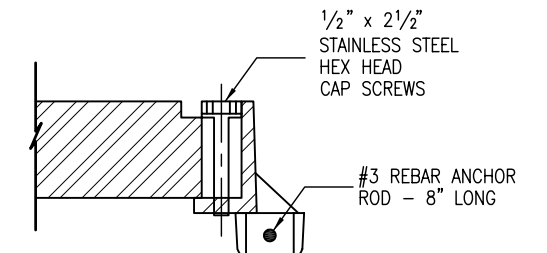
**GRATE PLAN**



**MULTIPLE GRATE WITH FRAME PLAN**



**SECTION C-C**



**SECTION D-D**

**Computer File Information**

Creation Date: 07/04/06      Initials: SJR  
 Last Modification Date: 07/04/06      Initials: LTA  
 Full Path: www.dot.state.co.us/DesignSupport/  
 Drawing File Name: 6040250405.dwg  
 CAD Ver.: MicroStation V8      Scale: Not to Scale      Units: English

**Sheet Revisions**

| Date: | Comments |
|-------|----------|
| (R-X) |          |
| (R-X) |          |
| (R-X) |          |
| (R-X) |          |

**Colorado Department of Transportation**

4201 East Arkansas Avenue  
 Denver, Colorado 80222  
 Phone: (303) 757-9083  
 Fax: (303) 757-9820

**Project Development Branch      SRJ/LTA**

**VANE GRATE INLET**

Issued By: Project Development Branch on July 04, 2006

**STANDARD PLAN NO.**

**M-604-25**

**Sheet No. 4 of 5**