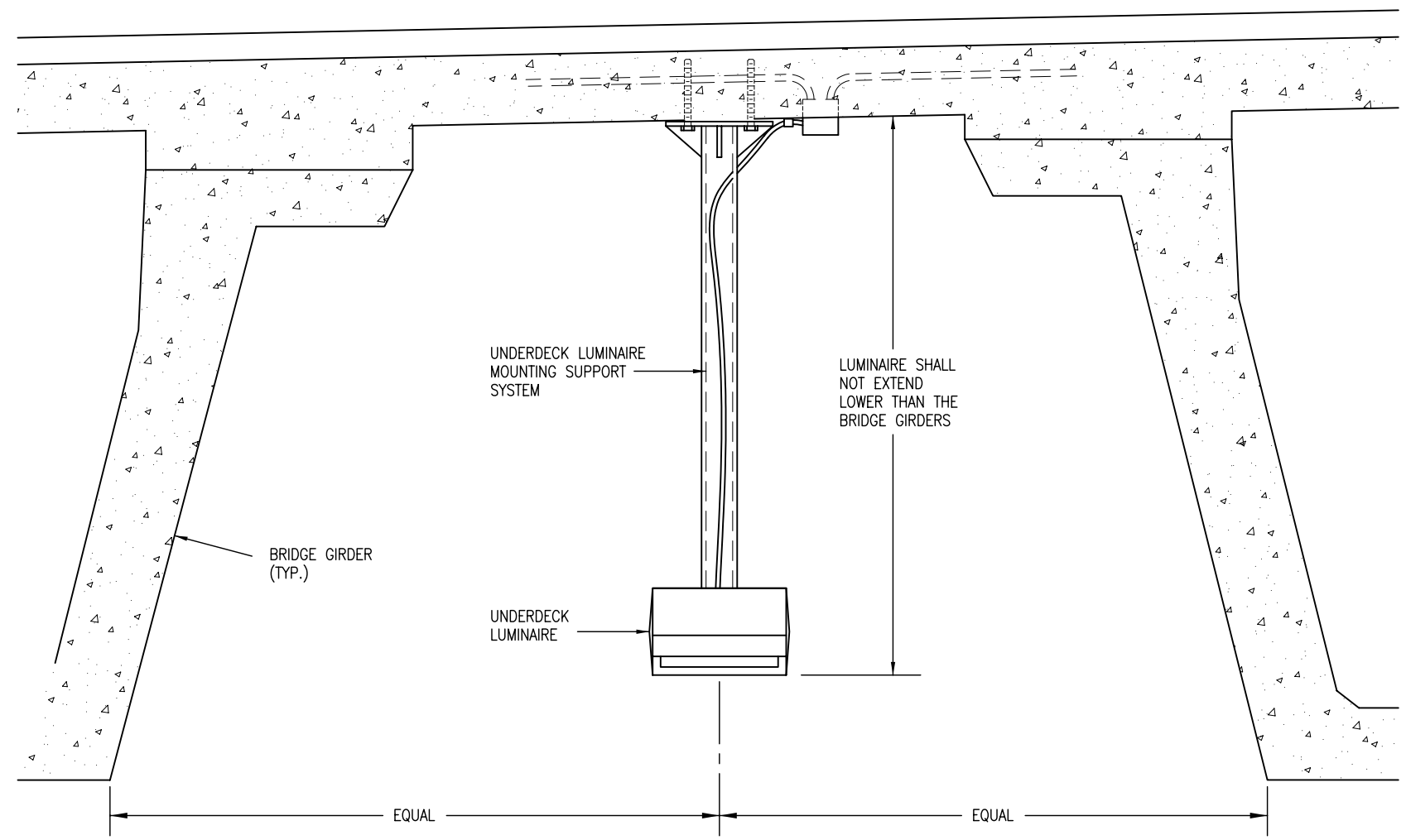
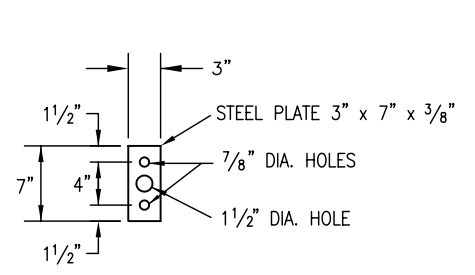


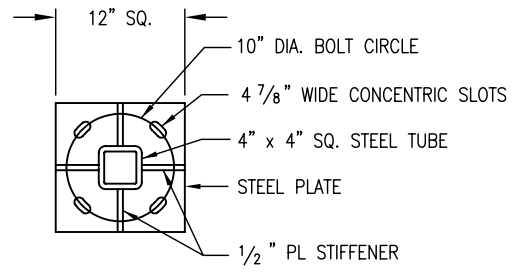
SECTION VIEW
UNDERDECK LUMINAIRE SUPPORT
 (SEE BRIDGE PLANS FOR INSTALLATION DETAILS)



FRONT VIEW
UNDERDECK LUMINAIRE SUPPORT



CONNECTION PLATE
 USE ASTM RUBBER GASKET BETWEEN PLATE AND 4 IN. SQ. STEEL TUBE



BASE PLATE
 MOUNT BASEPLATE SQUARE TO TRAVELED WAY TO BE LIGHTED


UNDER DECK LIGHTING DETAILS
D-613-3

THIS DETAIL IS A TYPICAL UNDER DECK LUMINAIRE AND MOUNTING SUPPORT SYSTEM.

APPLICATION: UNDER DECK LOCATIONS AND AIM POINTS ARE PROJECT SPECIFIC, AND WILL REQUIRE FIELD ADJUSTMENTS.

HISTORY: DEVELOPED THROUGH CDOT EXPERIENCE.

PLEASE CALL THE STANDARDS ENGINEER AT 303-757-9083 FOR ANY QUESTIONS. DATE: JULY 04, 2006
 PLEASE DELETE THIS BLOCK BEFORE USING THIS DETAIL ON A PROJECT. SRJ/LTA

Computer File Information		Sheet Revisions		Colorado Department of Transportation		As Constructed		UNDER DECK LIGHTING		Project No./Code	
Creation Date: 07/04/06	Initials: SRJ	(R-X)	mm/dd/yy XXXXXXXX	XXXXXX	 Street Address XXXXXXXXXX City, State Zip Code Phone: XXX-XXX-XXXX FAX: XXX-XXX-XXXX	No Revisions:	mm/dd/yy	D-613-3		D-613-3	
Last Modification Date: 07/04/06	Initials: LTA	(R-X)	mm/dd/yy XXXXXXXX	XXXXXX		Revised:	mm/dd/yy			Designer:	XXXXXXX
Full Path: www.dot.state.co.us/DesignSupport/		(R-X)	mm/dd/yy XXXXXXXX	XXXXXX		Void:	mm/dd/yy	Detailer:	XXXXXXX	Sheet Number: 1 of 1	
Drawing File Name: D613030101.dwg		(R-X)	mm/dd/yy XXXXXXXX	XXXXXX		Sheet Subset:	XXXXXXX	Subset Sheets:	1 of 1		
CAD Ver.: MicroStation V8	Scale: Not to Scale Units: English	(R-X)	mm/dd/yy XXXXXXXX	XXXXXX		Region Number or Staff Initials					