

GENERAL NOTES

- ALL MATERIAL DIMENSIONS AND WEIGHTS ON THIS STANDARD ARE NOMINAL UNLESS OTHERWISE INDICATED.
- AT EACH LOCATION WHERE AN ELECTRIC TRANSMISSION, DISTRIBUTION OR SECONDARY LINE CROSSES A WOOD POST FENCE, THE CONTRACTOR SHALL FURNISH AND INSTALL A GROUND CONFORMING TO ARTICLE 250 OF THE NATIONAL ELECTRICAL CODE. THE GROUND ROD SHALL BE A MINIMUM DIAMETER OF 1/2 IN. AND 8 FT. IN LENGTH, AND DRIVEN AT LEAST 7 1/2 FT. INTO THE GROUND. THE ROD SHALL BE CONNECTED TO EACH WIRE WITH A MINIMUM AWG NO. 8 STRANDED COPPER WIRE. GROUNDING WILL NOT BE PAID FOR SEPARATELY BUT SHALL BE INCLUDED IN THE WORK.
A METAL LINE POST SHALL BE INSTALLED A MAXIMUM OF EVERY 500 FT. ALONG A WOOD POST FENCE. THE METAL POST SHALL BE WITHIN 1 FT. OF THE NEAREST WOOD POST, AND SHALL BE TIED TO EACH STRAND WITH A WIRE CLAMP.
- DIMENSIONS SHOWN FOR "STANDARD" AND "ALTERNATIVE" APPLY FOR BOTH WOOD AND METAL POST FENCE.
- FENCE WIRE SHALL BE ENDED, DOUBLE WRAPPED AND TIED OFF AT END POSTS, ANGLE POSTS AND LINE BRACE POSTS. FENCE TO BE CONTINUED SHALL THEN BE RESTARTED IN THE SAME MANNER.
- FENCE WIRE SHALL BE PLACED ON EITHER ROAD OR FIELD SIDE OF POSTS, DEPENDING ON LOCAL CONDITIONS, i.e. ON CURVES, THE WIRE SHALL BE PLACED ON THE SIDE OF THE POST WHICH WILL RESULT IN THE LEAST TENSION ON FENCE TIES. THIS WILL ALSO APPLY WHERE WIND DRIFT, TUMBLE WEEDS OR OTHER CONDITIONS WOULD EXERT UNUSUAL PRESSURE AGAINST THE WIRE. WHERE POSSIBLE, WIRE SHOULD BE PLACED ON THE LIVESTOCK SIDE OF THE POSTS.
- WHERE STEEL POSTS ARE SPECIFIED, EVERY FIFTH POST SHALL BE WOOD, WHEN SPECIFIED ON THE PLANS.
- RIGHT OF WAY FENCES SHALL BE CONSTRUCTED APPROXIMATELY 6 IN. INSIDE THE BOUNDARY OF THE RIGHT OF WAY AS SHOWN ON THE PLANS, OR AS STAKED.
- THE CONTRACTOR SHALL BE RESPONSIBLE FOR RE-ESTABLISHING DISTURBED OR DESTROYED SURVEY MONUMENTS TO THE APPROPRIATE ACCURACY IN ACCORDANCE WITH SUBSECTION 625.08 OF THE STANDARD SPECIFICATIONS.

WOOD POSTS:

ALL LINE POSTS SHALL HAVE A MINIMUM DIAMETER OF 4 IN. AND BE A MINIMUM OF 6 FT.-0 IN. LONG.

ALL END, CORNER, INTERSECTION AND BRACE POSTS SHALL HAVE A MINIMUM DIAMETER OF 5 IN. AND BE 7 FT. IN LENGTH.

WOOD POSTS HAVING NONUNIFORM CROSS SECTION SHALL BE SET WITH THE LARGER DIAMETER END IN THE GROUND.

FENCE WIRE SHALL BE STAPLED TO WOOD POSTS OR TIED TO METAL POSTS AS SHOWN MARKED + ON BARBED WIRE OR COMBINATION WIRE FENCE DETAILS. STAPLES SHALL BE NO. 9 WIRE MINIMUM, AND AT LEAST 1 1/2 IN. LONG.

METAL POSTS:

ALL POSTS AND BRACES SHALL BE THE TYPES AND WEIGHTS SHOWN OR ACCEPTABLE EQUIVALENTS, AND SHALL BE IN ACCORDANCE WITH AASHTO M 281. HOLES SHALL BE PROVIDED IN END, CORNER, AND GATE POSTS AS DETAILED.

CORNER AND LINE BRACE POSTS:

TYPE: 2 1/2 IN. x 2 1/2 IN. x 1/4 IN. STRUCTURAL STEEL ANGLES
WEIGHT: 4.10 LBS./LIN. FT.
LENGTH: 6 FT.-6 IN. MIN.
NUMBER OF BRACES: TWO

LINE POSTS:

TYPE: "STUDDED TEE" OR "U"
WEIGHT: 1.33 LBS./LIN. FT. (WITHOUT ANCHOR)
LENGTH: 6 FT.-0 IN. MINIMUM
ANCHOR: SECURELY FASTENED, WITH BEARING SURFACE SUFFICIENT TO RESIST MOVEMENT OF POST. WEIGHT: 0.67 LB.

METAL END POSTS AND GATE POSTS:

TYPE: 2 1/2 IN. x 2 1/2 IN. x 1/4 IN. STRUCTURAL STEEL ANGLES
WEIGHT: 4.10 LBS./LIN. FT.
NUMBER OF BRACES: ONE
LENGTH: END, 6 FT.-6 IN. MINIMUM. PANEL GATE, 7 FT.-0 IN. MINIMUM.

BRACES: (FOR CORNER, END OR LINE BRACE POSTS)

TYPE: 2 IN. x 2 IN. x 1/4 IN. STRUCTURAL STEEL ANGLES
WEIGHT: 3.19 LBS./LIN. FT.
LENGTH: SAME AS CORNER AND END POSTS USED.

FOOTINGS OR BASES:

CONCRETE SHALL BE CLASS B.
CONCRETE WITH LIGHTWEIGHT AGGREGATES CONFORMING TO AASHTO M 195 (ASTM C 330) WILL BE PERMITTED.

ALTERNATIVES: (CONTRACTOR'S OPTION)

END, CORNER AND LINE BRACE POSTS

TYPE	I.D.	O.D.	WEIGHT	WALL THICKNESS
	INCHES	INCHES	LB/FT.	INCHES
1. STD. GALV. PIPE	2 1/2	2 7/8	5.79 ± 5%	0.203
2. H.S. COLD ROLLED PIPE	2 1/2	2 7/8 ± 0.16	4.64 ± 5%	0.160 ± 5%

LENGTHS SHALL BE 6 FT.-6 IN. MINIMUM

BRACES:

TYPE: 1 3/8 IN. O.D. TUBULAR STEEL WITH 2 1/2 IN. BRACE BAND, HINGE BOLT AND 1 3/8 IN. I.D. RAIL END; ALL GALVANIZED.
WEIGHT: 16 LBS./LIN. FT. ± 5%
LENGTH: 6 FT.-6 IN. MINIMUM.

BARBED WIRE:

ZINC-COATED STEEL BARBED WIRE SHALL CONFORM TO AASHTO M 280, (ASTM A 121), 12-1/2 GAGE WITH CLASS 1 COATING, OR ALUMINUM-COATED STEEL BARBED WIRE CONFORMING TO ASTM A 585 TYPE 1.

WOVEN WIRE MESH:

WOVEN WIRE USED IN COMBINATION WIRE FENCE SHALL BE GALVANIZED AND CONFORM TO AASHTO M 279, (ASTM A 116) COATING CLASS 1, AND THE FOLLOWING:

STANDARD	WOVEN WIRE FIELD FENCE, STYLE OR DESIGN NO.	ALTERNATIVE 4 IN. X 4 IN. WIRE "V" MESH
832-6-1*	32 IN. WIDTH 0.65 LBS./LIN.FT.	34 IN. WIDTH - 0.75 LBS./LIN.FT.
726-6-1*	26 IN. WIDTH 0.55 LBS./LIN.FT.	26 IN. WIDTH - 0.54 LBS./LIN.FT.
		CROSS WIRES-1 STRAND-14-1/2 GAGE MIN. HORIZONTAL-2 STRAND-12-1/2 GAGE

* 12-1/2 GAGE WOVEN WIRE FENCE FABRIC (832-6-12-1/2 OR 726-6-12-1/2) MAY BE USED WHEN SPECIFIED IN THE CONTRACT.

ALL FENCE WIRE TIES, CLIPS, CLAMPS, STAPLES AND OTHER WIRE APPURTENANCES SHALL BE GALVANIZED IN ACCORDANCE WITH AASHTO M 232.

DRIVEWAY GATES (SINGLE):

HEIGHT: 42 IN.
WEIGHT: NOT LESS THAN 90 LBS. COMPLETE WITH LATCH AND HINGES.
WIDTH OF GATE OPENING: 16 FT.-0 IN. MINIMUM TO 20 FT.-0 IN. MAXIMUM.
GATE FRAME: 1 IN. I.D. STANDARD GALVANIZED PIPE OR ACCEPTABLE EQUIVALENT AND SHALL BE OF ALL WELDED CONSTRUCTION.

WOVEN WIRE SHALL ENCLOSE THE GATE FRAME AS SHOWN AND SHALL BE THE SAME WOVEN WIRE DESIGN AS THE FENCE, OR AS APPROVED BY THE ENGINEER.

ALTERNATIVE DRIVEWAY GATES (SINGLE PANEL):

WEIGHT: GALVANIZED STEEL, 75 LBS.
HEIGHT: APPROXIMATELY 42 IN. (5 PANELS),
WIDTH OF GATE OPENING: 16 FT.-0 IN. MINIMUM TO 20 FT.-0 IN. MAXIMUM.

GATES SHALL BE OF RIVETED CONSTRUCTION AS FOLLOWS:
MINIMUM FOUR NO. 10 RIVETS AT EACH RIGHT ANGLE CONNECTION AND WHERE DIAGONAL BRACES CONNECT TO HORIZONTAL PANELS.

MINIMUM THREE NO. 10 RIVETS WHERE DIAGONAL BRACES CONNECT TO TOP AND BOTTOM PANELS.

WALK GATES:

HEIGHT: APPROXIMATELY 42 IN. (5 PANELS)
WEIGHT: GALVANIZED STEEL, 16 LBS.; TEMPERED ALUMINUM, 10 LBS.
WIDTH OF GATE OPENING: 3 FT.-0 IN. MINIMUM.

ALTERNATIVE WALK GATES:

HEIGHT: 42 IN.
WEIGHT: NOT LESS THAN 18 LBS. COMPLETE WITH LATCH AND HINGES.

WIDTH OF GATE OPENING: 3 FT.-0 IN. MINIMUM.

GATE FRAME: 3/4 IN. I.D. STANDARD GALVANIZED PIPE OR ACCEPTABLE EQUIVALENT AND SHALL BE OF ALL-WELDED CONSTRUCTION.

WOVEN WIRE SHALL BE OF THE SAME CONSTRUCTION DESIGNATED FOR DRIVEWAY GATE.

ALTERNATIVE EQUIVALENT STANDARD METAL GATES OTHER THAN SHOWN WILL BE ACCEPTABLE SUBJECT TO THE ENGINEER'S APPROVAL.

IN LIEU OF GALVANIZED FINISH ON GATE FRAMES, CADMIUM-PLATED PIPE OR ALUMINUM PAINTING WILL BE ACCEPTED.

LATCHES AND HINGES:

GALVANIZED STEEL OR ALUMINUM OF STANDARD MANUFACTURE. HINGES SHALL BE PLACED AS SHOWN TO PREVENT THEFT.

IN LIEU OF STANDARD MAKE LATCHES, THE CONTRACTOR MAY USE AN ELECTRO-GALVANIZED CHAIN, EYEBOLT AND SNAPHOOK TYPE LATCH.

EYEBOLT, CHAIN AND SNAPHOOK ASSEMBLY SHALL BE SECURED TO LATCH SIDE OF GATE. GATE CLOSURE MAY BE ACCOMPLISHED BY WRAPPING CHAIN AROUND END POST AND SNAPPING HOOK INTO CHAIN.

WOOD STAYS:

WOOD STAYS SHALL BE UNTREATED NATIVE TIMBER. STAY DIMENSIONS SHALL BE 2 IN. x 2 IN. NOMINAL MINIMUM (1 1/2 IN. x 1 1/2 IN.). WOOD STAYS MAY BE STAPLED, OR DRILLED AND TIED WITH WIRE. METAL STAYS MAY BE TIED TO THE BOTTOM WIRE.

Computer File Information

Creation Date: 07/04/12	Initials: DD
Last Modification Date: 07/04/12	Initials: LTA
Full Path: www.coloradodot.info/business/designsupport	
Drawing File Name: 607010103.dgn	
CAD Ver.: MicroStation V8	Scale: Not to Scale Units: English

Sheet Revisions	
Date:	Comments
(R-X)	
(R-X)	
(R-X)	
(R-X)	

Colorado Department of Transportation



4201 East Arkansas Avenue
Denver, Colorado 80222
Phone: (303) 757-9083
Fax: (303) 757-9820

Project Development Branch

DD/LTA

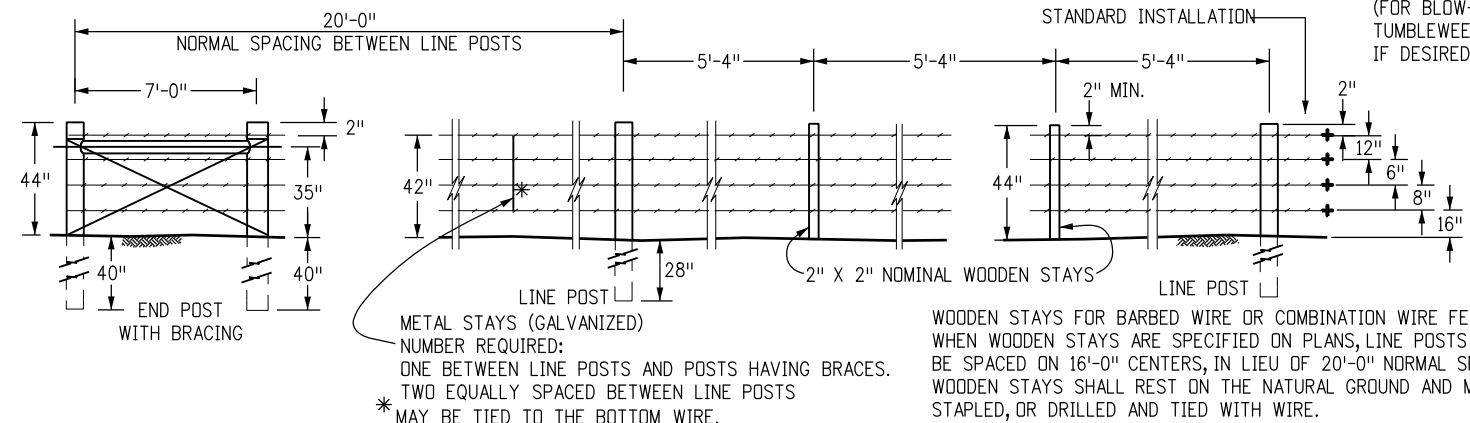
WIRE FENCES AND GATES

Issued By: Project Development Branch July 4, 2012

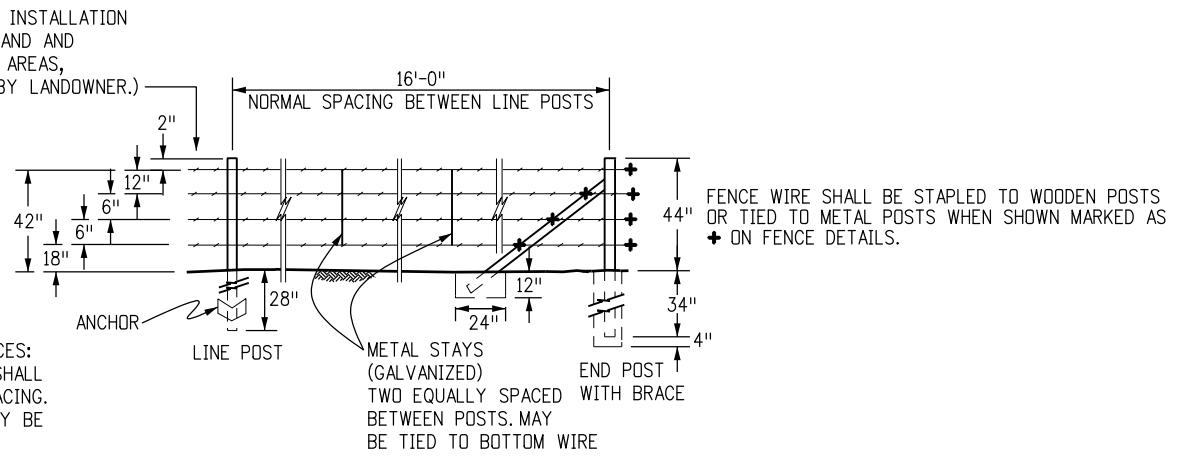
STANDARD PLAN NO.

M-607-1

Sheet No. 1 of 3



BARBED WIRE FENCE WITH WOODEN POSTS



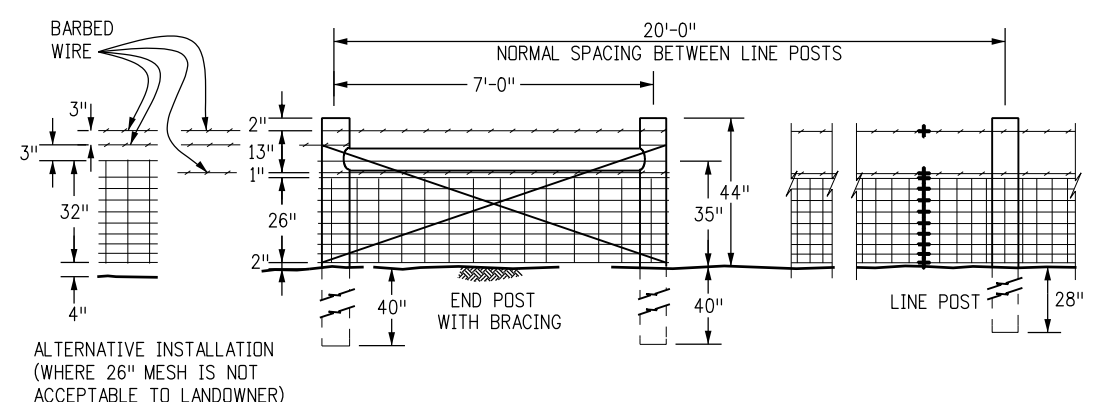
BARBED WIRE FENCE WITH METAL POSTS

FENCE WIRE SHALL BE STAPLED TO WOODEN POSTS OR TIED TO METAL POSTS WHEN SHOWN MARKED AS * ON FENCE DETAILS.

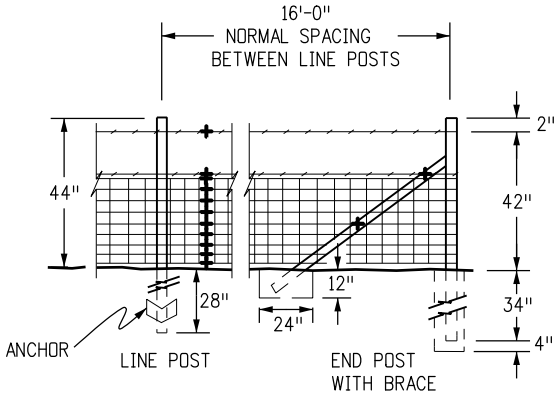
METAL STAYS (GALVANIZED)
NUMBER REQUIRED:
ONE BETWEEN LINE POSTS AND POSTS HAVING BRACES.
TWO EQUALLY SPACED BETWEEN LINE POSTS
* MAY BE TIED TO THE BOTTOM WIRE.

WOODEN STAYS FOR BARBED WIRE OR COMBINATION WIRE FENCES:
WHEN WOODEN STAYS ARE SPECIFIED ON PLANS, LINE POSTS SHALL BE SPACED ON 16'-0" CENTERS, IN LIEU OF 20'-0" NORMAL SPACING.
WOODEN STAYS SHALL REST ON THE NATURAL GROUND AND MAY BE STAPLED, OR DRILLED AND TIED WITH WIRE.

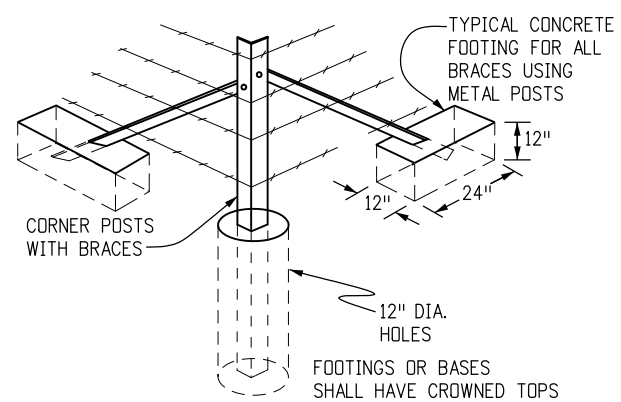
METAL STAYS (GALVANIZED)
TWO EQUALLY SPACED WITH BRACE BETWEEN POSTS. MAY BE TIED TO BOTTOM WIRE



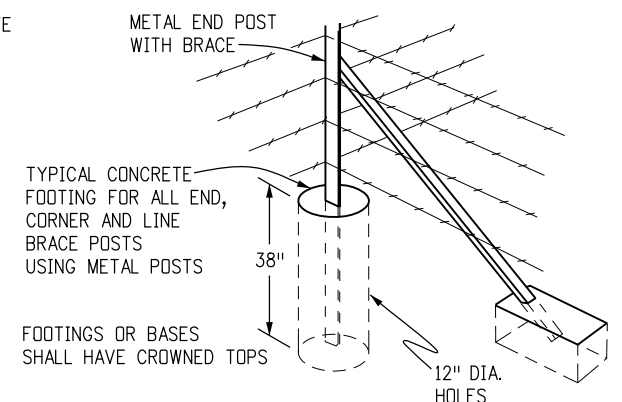
COMBINATION WIRE FENCE WITH WOODEN POSTS



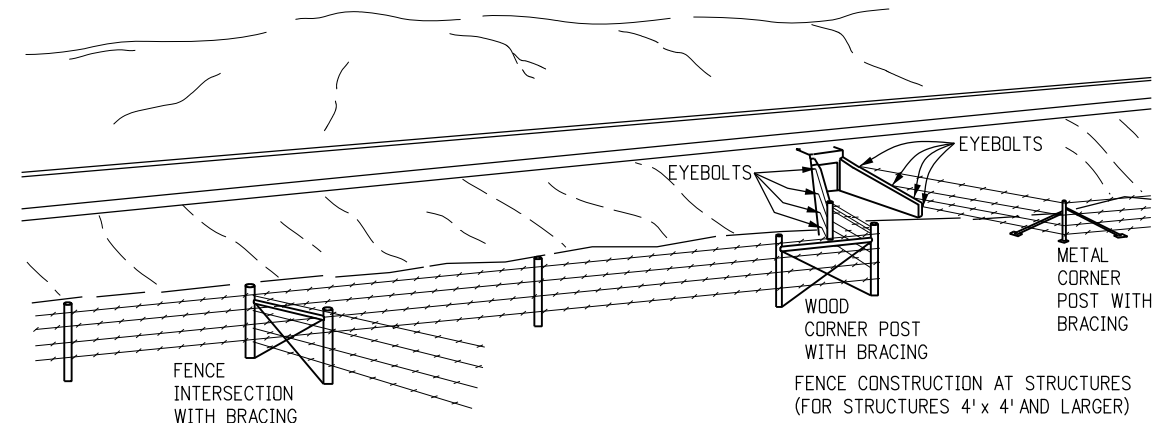
COMBINATION WIRE FENCE WITH METAL POSTS



TYPICAL CORNER POST INSTALLATION

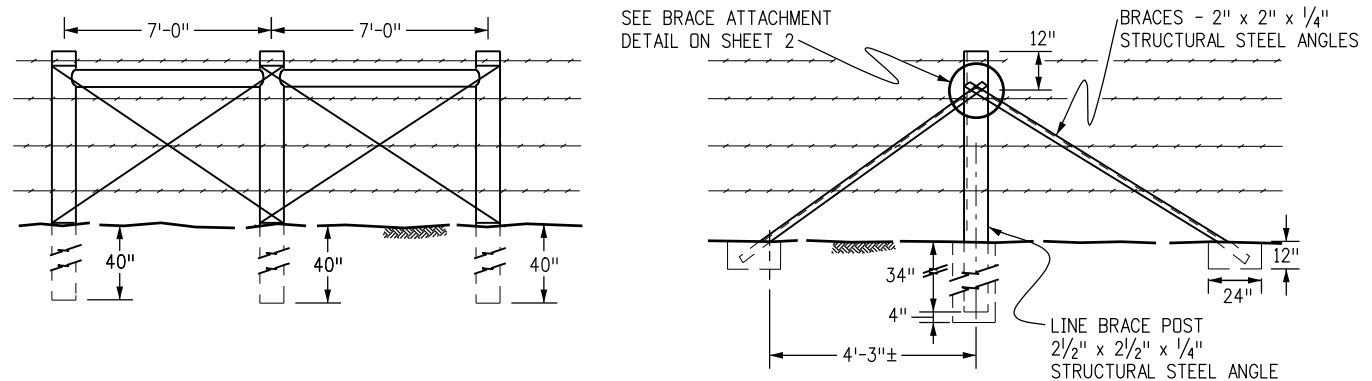


TYPICAL INSTALLATION AT FENCE INTERSECTIONS



NOTES

- AT ALL STRUCTURES OF 4 FT. x 4 FT. AND LARGER, THE FENCE SHALL END AT THE EYEBOLTS IN THE WINGS OF THE STRUCTURE. WHERE THE TYPE OF STRUCTURE PROHIBITS THE USE OF EYEBOLTS, AN END POST WITH BRACE SHALL BE USED.
- EYEBOLTS SHALL BE MADE OF 1/2 IN. ROUND BARS WITH A MINIMUM OF 6 IN. OF BODY LENGTH EMBEDDED (HOOKED OR BENT) IN FRESH CONCRETE.
- FOR EYEBOLTS IN EXISTING CONCRETE, THE 1/2 IN. ROUND BARS SHALL BE DEFORMED AND GROUTED INTO DRILLED HOLES.
- EYEBOLTS SHALL HAVE A MINIMUM OF 1 IN. INSIDE EYE DIAMETER.
- EYEBOLTS SHALL BE FURNISHED AND INSTALLED BY THE CONTRACTOR. EYEBOLTS WILL NOT BE PAID FOR SEPARATELY BUT SHALL BE INCLUDED IN THE WORK.



LINE BRACES

WHEN GATES, ANGLES, CORNERS OR INTERSECTING FENCES ARE NOT REQUIRED, LINE BRACES SHALL BE SPACED AS FOLLOWS:
METAL POSTS - 800 FT. INTERVALS
WOOD POSTS - 1,400 FT. INTERVALS

Computer File Information	
Creation Date: 07/04/12	Initials: DD
Last Modification Date: 07/04/12	Initials: LTA
Full Path: www.coloradodot.info/business/designsupport	
Drawing File Name: 607010203.dgn	
CAD Ver.: MicroStation V8 Scale: Not to Scale Units: English	

Sheet Revisions	
Date:	Comments
(R-X)	
(R-X)	
(R-X)	
(R-X)	

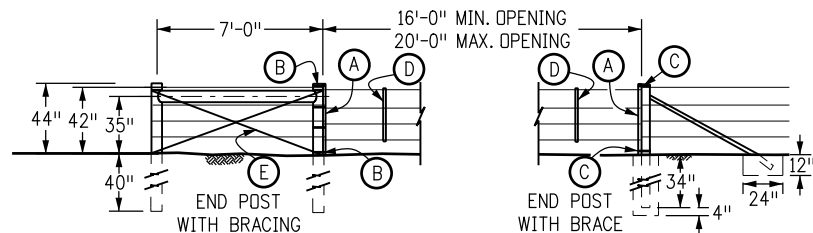
Colorado Department of Transportation
4201 East Arkansas Avenue
Denver, Colorado 80222
Phone: (303) 757-9083
Fax: (303) 757-9820

Project Development Branch DD/LTA

WIRE FENCES AND GATES

Issued By: Project Development Branch July 4, 2012

STANDARD PLAN NO.
M-607-1
Sheet No. 2 of 3



▼ FOR COMBINATION WIRE GATE, USE 3/4" MESH AND ONE STRAND OF BARBED WIRE. EXTEND WOODEN STAYS TO GROUND.

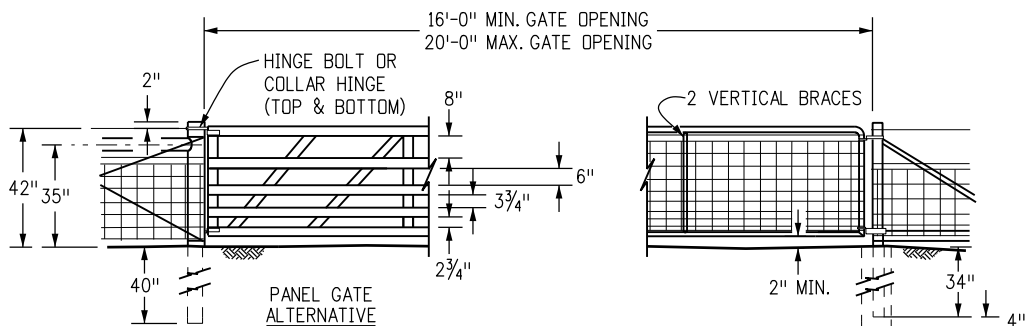
- (A) 2 IN. x 4 IN. x 4 FT. WOODEN STAYS
- (B) FOUR NO. 12-1/2 GA. WIRE LOOPS TO ACT AS HINGES
- (C) NO. 12-1/2 GA. WIRE LOOPS

WOODEN POSTS

- (D) TWO 2 IN. x 2 IN. NOMINAL WOODEN STAYS EQUALLY SPACED
- (E) NO. 12-1/2 GA. BRACE WIRE, DOUBLE STRAND

METAL END POSTS

▼ BARBED WIRE GATE

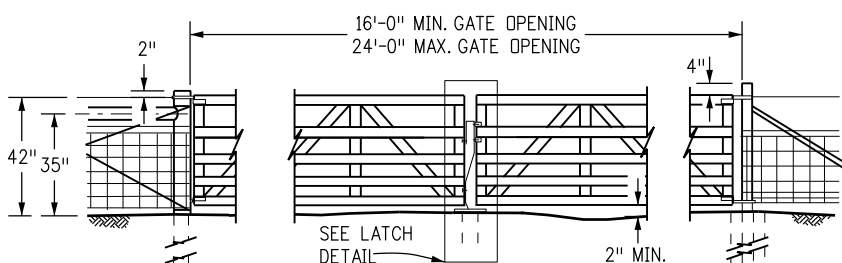


WOODEN POSTS
(16'-0" MAX.)

DRIVEWAY GATES

(METAL AND WOOD END POSTS SHALL BE BRACED SAME AS FOR BARBED WIRE GATES)

METAL END POSTS
(20'-0" MAX.)



WOODEN POSTS

FOR SPACING OF GATE PANELS AND LENGTH OF POSTS, SEE DETAIL ABOVE.

PANEL GATE POSTS

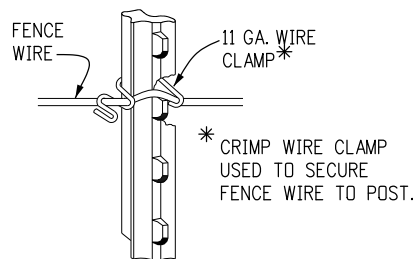
(METAL AND WOOD END POSTS SHALL BE BRACED SAME AS FOR BARBED WIRE GATES)



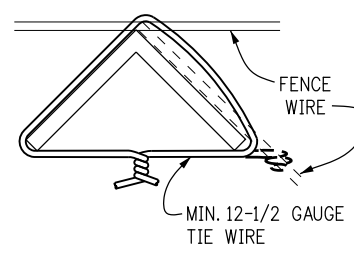
WOODEN POSTS PANEL GATE POSTS
WALK GATE

(METAL AND WOOD END POSTS SHALL BE BRACED SAME AS FOR BARBED WIRE GATES)

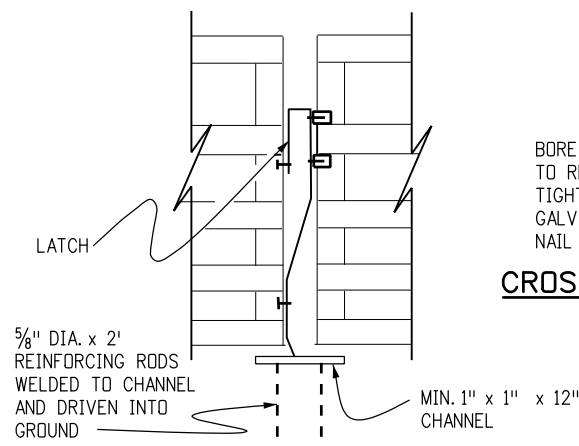
WOODEN POSTS METAL END POSTS
ALTERNATIVE WALK GATE



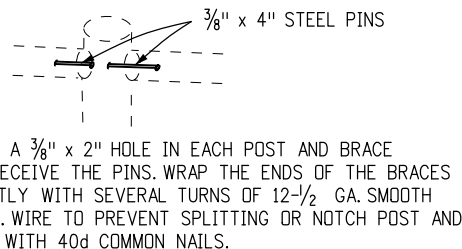
TIES FOR "STUDED TEE" OR "U" POSTS



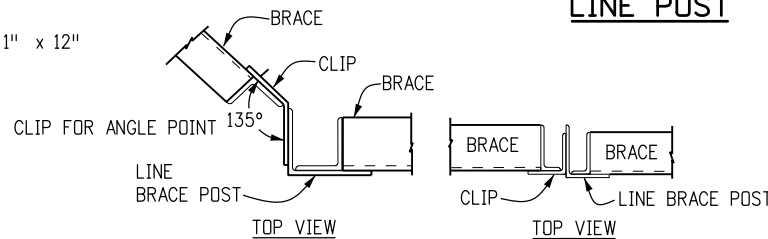
TIES FOR ANGLE POSTS FENCE WIRE TIES



LATCH DETAIL



CROSS BRACE DOWELING DETAIL

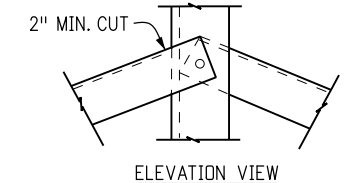
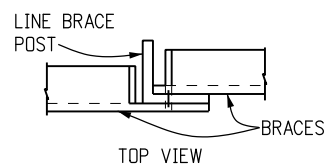


STUDED "TEE" LINE POST

"U" LINE POST TYPICAL METAL POSTS

SPlicing SLEEVE SHALL BE APPROVED BY THE ENGINEER

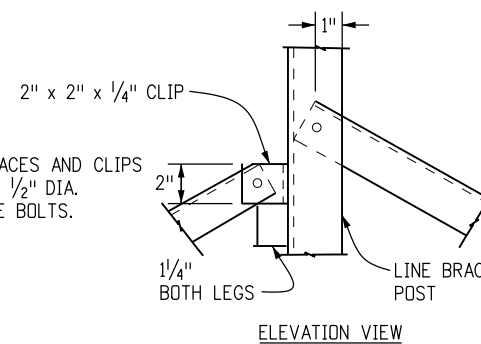
WIRE SPLICE



BRACE ATTACHMENT DETAIL

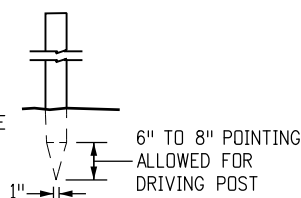
Holes in posts, braces and clips shall accommodate 1/2" DIA. GALVANIZED MACHINE BOLTS.

Ø ALTERNATIVE ATTACHMENT METHODS, ACCEPTABLE TO THE ENGINEER, MAY BE USED.

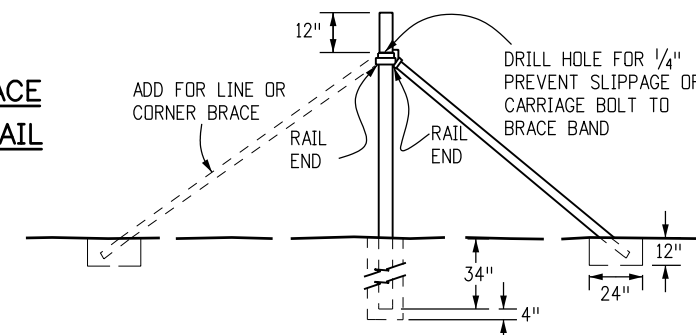


Ø ALTERNATIVE BRACE ATTACHMENT DETAIL

WOODEN POSTS MAY BE DRIVEN IN LIEU OF SETTING AND TAMPING, AT THE OPTION OF THE CONTRACTOR. DRIVING METHODS SHALL NOT DAMAGE POST.



POST POINTING



ALTERNATIVE POST
(FOR END, CORNER OR LINE BRACE POSTS)

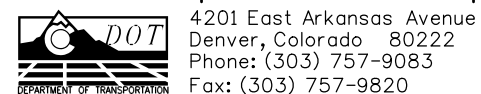
Computer File Information

Creation Date: 07/04/12	Initials: DD
Last Modification Date: 07/04/12	Initials: LTA
Full Path: www.coloradodot.info/business/designsupport	(R-X)
Drawing File Name: 607010303.dgn	(R-X)
CAD Ver.: MicroStation V8	(R-X)
Scale: Not to Scale	Units: English

Sheet Revisions

Date:	Comments

Colorado Department of Transportation



Project Development Branch DD/LTA

WIRE FENCES AND GATES

Issued By: Project Development Branch July 4, 2012

STANDARD PLAN NO.

M-607-1

Sheet No. 3 of 3