

STATE OF COLORADO



DEPARTMENT OF TRANSPORTATION

4201 East Arkansas Avenue
Denver, Colorado 80222
(303) 757-9293

July 17, 2001

COLORADO CONSTRUCTION COST INDEX REPORT
Calendar year 2001
Second Quarter

Prepared by
Darrell Dinges
Engineering Estimates and Market Analysis Unit of
Contracts and Market Analysis Branch

Prepared for
John Unbewust, Chief Engineer

STATE OF COLORADO



DEPARTMENT OF TRANSPORTATION

4201 East Arkansas Avenue
Denver, Colorado 80222
(303) 757-9293

SUMMARY

CONSTRUCTION COST INDEX FOR SELECTED HIGHWAY CONSTRUCTION ITEMS

2nd QUARTER ENDING JUNE 30, 2001

Index for this quarter.....	151.5
Index for last quarter.....	170.0
Point change from last quarter.....	-18.5
Percentage change from last quarter.....	-12.2%
Index for same quarter of last year.....	165.5
Point change from same quarter last year.....	- 14.0
Percentage change from this quarter.....	- 9.3%

Average number of bidders this quarter.....	3.96
Change in number of bidders from last quarter.....	- 21.2%

NOTE: All information shown in this publication was assembled using 1987 as the base year.

CCI ITEMS USED FROM 4/1/2001 TO 6/30/2001

ITEM CODE	# OF ITEM	QUANTITY	PRICE	UNIT PRICE	INDEX
203-00000 To 203-00060 203-00062 To 203-00210 203-00400 To 203-00500	32	English (CY) 1,279,383.00	\$6,122,614.93	\$4.79	
203-01020 To 203-01030 209-00000 To 209-00050	1	Metric (CM) 12,855.70	\$77,134.20	\$6.00	
UNCLASSIFIED EXCAV (CIP)	33	1,296,198.26^{CY}	\$6,199,749.13	\$4.78	193.6
403-00720, 403-01000, 403-01010, 403-02000, 403-09121 To 403-09500 403-31300 To 403-36447 403-91401 To 403-95353 411-03100 To 411-03355 411-10010 To 411-90010 (Gal/Lit) Gallon & Liter are converted to Ton	84	English (TON) 550,871.02	\$19,620,600.63	\$35.62	
	2	Metric (MT) 64.11	\$6,560.50	\$102.33	
HOT BIT. PAVEMENT (H A)	86	550,941.71 T	\$19,627,161.13	\$35.62	154.0
412-00000 To 412-00050 412-00700 To 412-01352 412-03000 To 412-03000	12	English (SY) 1,282,463.73	\$17,119,776.16	\$13.35	
	1	Metric (SM) 22,086.07	\$763,296.00	\$34.56	
CONCRETE PAVEMENT (9")	13	1,308,878.46^{SY}	\$17,883,072.16	\$13.66	102.3

SURFACING TOTAL INDEX 148.5

509-00000 To 509-00000	0	English (LB) 0.00	\$0.00	\$0.00	
	0	Metric (KG) 0.00	\$0.00	\$0.00	
STRUCTURAL STEEL	0	0.00^{LB}	\$0.00	\$0.00	0.0
601-01022 To 601-01022 601-01030 To 601-01060 601-03030 To 601-05064	14	English (CY) 9,743.10	\$2,756,266.90	\$282.89	
	0	Metric (CM) 0.00	\$0.00	\$0.00	
STRUCTURAL CONCRETE	14	9,743.10^{CY}	\$2,756,266.90	\$282.89	130.2
602-00000 To 602-00000 602-00020 To 602-00020	17	English (LB) 2,124,206.00	\$1,067,764.96	\$0.50	
	0	Metric (KG) 0.00	\$0.00	\$0.00	
REINFORCING STEEL	17	2,124,206.00^{LB}	\$1,067,764.96	\$0.50	122.6

STRUCTURAL TOTAL INDEX 128.3

COMPOSITE INDEX = 151.5

Sum of the 6 categories cost = \$47,534,014.28

HBP Unit Price per CY = \$70.54

Concrete Pavement Unit Price per CY= \$54.65

Summary Report for all the projects awarded Between 4/1/2001 And 6/30/2001

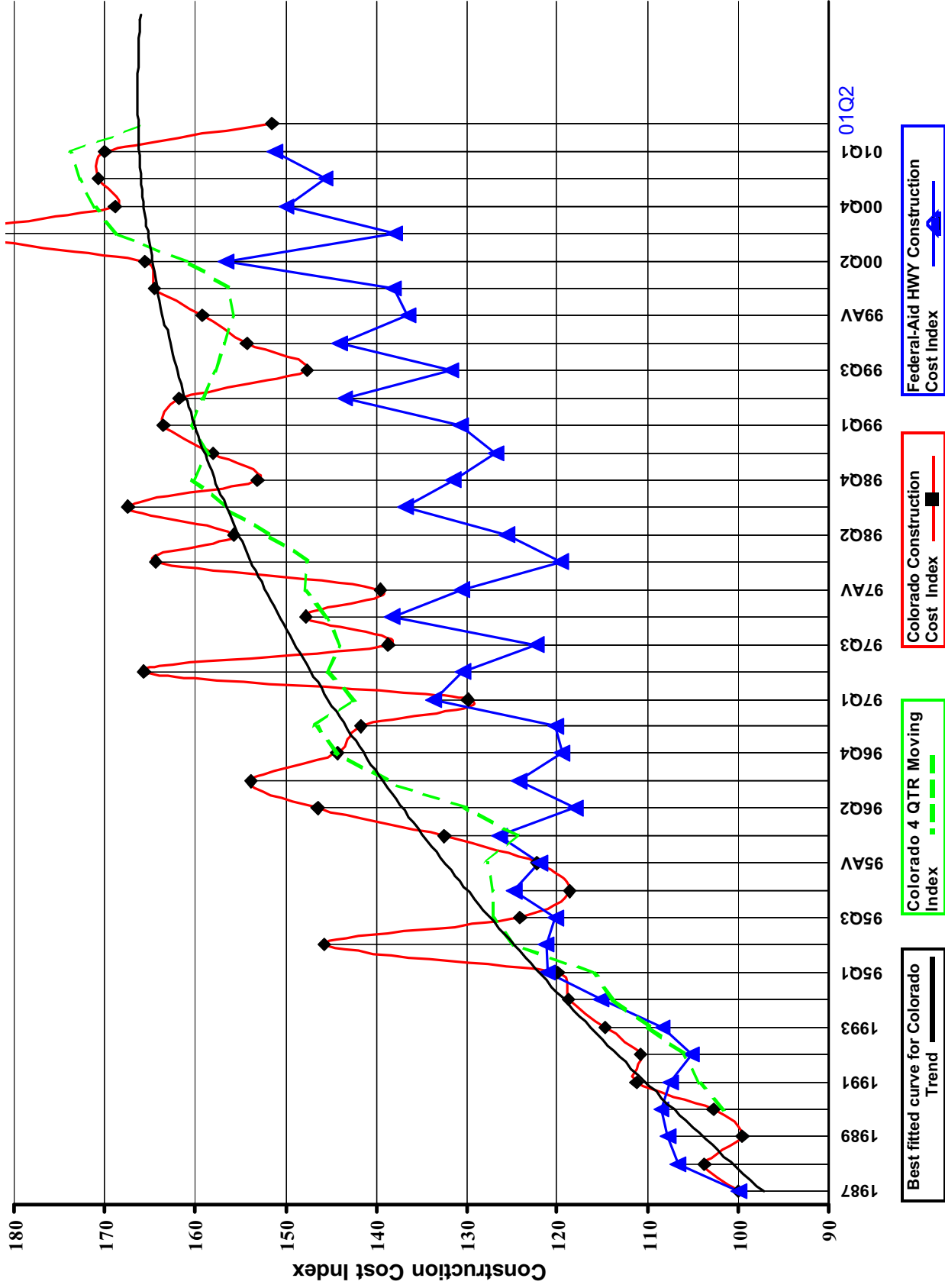
<i>Project Amount</i>	<i>No. of Projects</i>	<i>No. of Bidders</i>	<i>Total Contract Amt.</i>	<i>Avg. # of Bids</i>
<i>\$0.00 to \$49,999.99</i>	0			
<i>\$50,000.00 to \$99,999.99</i>	1	3	\$98,600.00	3.0
<i>\$100,000.00 to \$249,999.99</i>	7	16	\$1,355,878.21	2.3
<i>\$250,000.00 to \$499,999.99</i>	10	31	\$3,716,593.22	3.1
<i>\$500,000.00 to \$999,999.99</i>	5	17	\$3,823,603.62	3.4
<i>1,000,000.00 to \$2,499,999.99</i>	10	33	\$15,835,768.83	3.3
<i>2,500,000.00 to \$4,999,999.99</i>	6	38	\$20,027,667.29	6.3
<i>5,000,000.00 to \$9,999,999.99</i>	5	37	\$34,731,336.34	7.4
<i>10,000,000.00 to \$19,999,999.99</i>	1	3	\$11,993,047.30	3.0
<i>20,000,000.00 or Greater</i>	0			
Total	45	178	\$91,582,494.81	

Index Items as a percent of the total construction cost.

2nd Quarter 2001 CCI Items (from page 3): **\$ 47,534,014.28**
 ----- = **51.9 %**

2nd Quarter 2001 All Construction Items: **\$ 91,582,494.81**

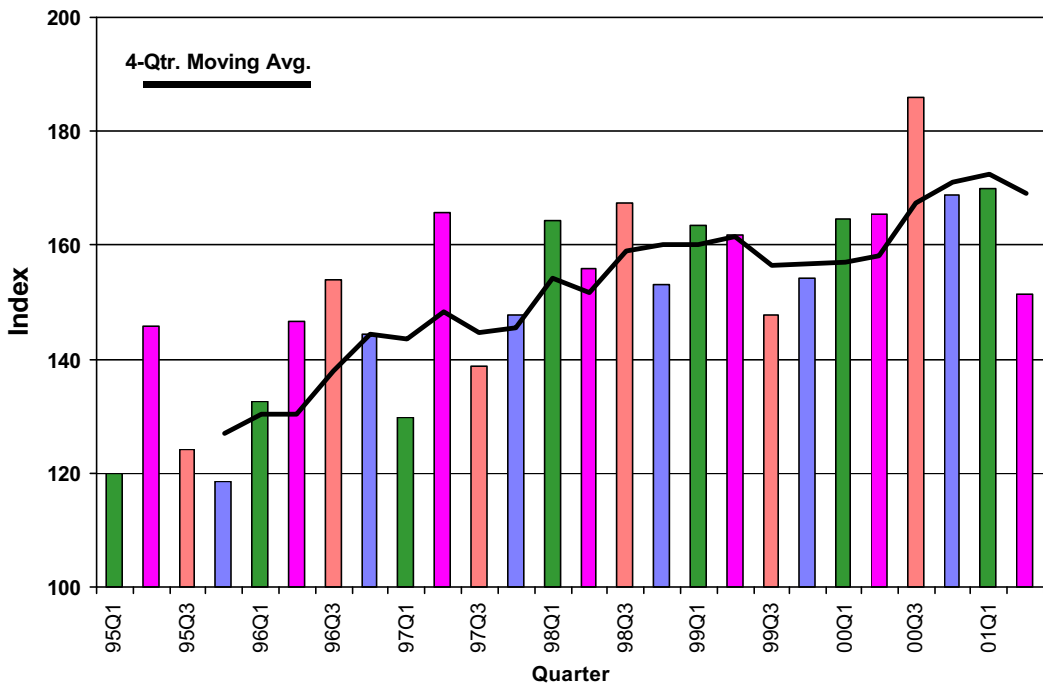
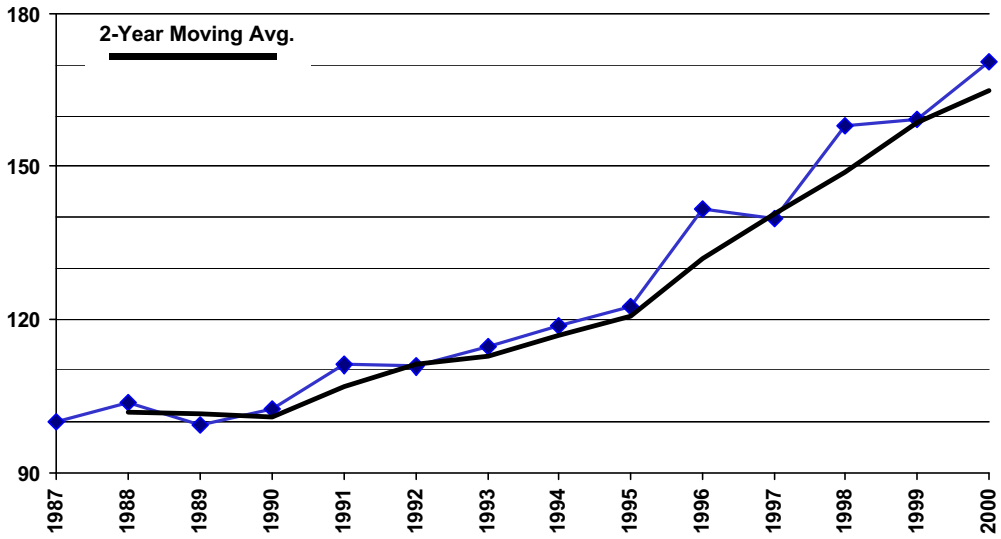
Colorado Highway Construction Cost Index Graph and Tabulations (1987 Base Year)



Colorado Highway Construction Cost Index Graph and Tabulations (1987 Base Year)

YEAR	QTR	Earthwork		Asph. Pavement		Concrete Pavement		Surfacing		Structural Concrete		Reinforcing Steel		Structural Steel		Composite Index	
		Bid Price	Index	Bid Price	Index	Bid Price	Index	Bid Price	Index	Bid Price	Index	Bid Price	Index	Bid Price	Index	Structural Index	Composite Index
1987	1987	\$2.47	100.0	\$23.17	100.0	\$13.36	100.0	100.0	100.0	\$217.32	100.0	\$0.41	100.0	\$0.85	100.0	100.0	100.0
1988	1988	\$2.92	118.1	\$23.88	103.0	\$13.84	103.6	103.1	103.1	\$195.02	89.7	\$0.45	110.7	\$0.89	104.1	96.7	103.7
1989	1989	\$2.57	103.9	\$23.67	102.2	\$11.65	87.2	100.6	100.6	\$199.41	91.8	\$0.40	97.8	\$0.88	103.5	95.3	99.6
1990	1990	\$2.78	112.5	\$23.98	103.5	\$15.09	113.0	104.5	104.5	\$190.86	87.8	\$0.37	90.8	\$0.99	116.0	94.1	102.7
1991	1991	\$3.31	133.8	\$26.25	113.3	\$16.03	120.0	114.0	114.0	\$195.43	89.9	\$0.38	93.1	\$0.89	104.4	93.5	111.2
1992	1992	\$2.77	112.3	\$26.20	113.1	\$23.82	178.3	119.8	119.8	\$216.87	99.8	\$0.36	87.9	\$0.71	82.8	94.0	110.7
1993	1993	\$3.25	131.4	\$27.74	119.7	\$16.75	125.4	121.3	121.3	\$212.43	97.7	\$0.37	90.1	\$0.79	93.0	95.3	114.7
1994	1994	\$3.56	144.2	\$28.40	122.6	\$18.78	140.6	124.4	124.4	\$219.94	101.2	\$0.37	89.7	\$0.67	78.8	94.4	118.8
1995	95Q1	\$2.85	115.5	\$30.98	133.7	\$20.33	152.2	135.6	135.6	\$217.43	100.1	\$0.39	94.6	\$0.67	78.8	94.7	119.8
1995	95Q2	\$6.18	250.1	\$30.43	131.3	\$27.06	202.5	138.7	138.7	\$227.59	104.7	\$0.40	97.0	\$0.73	85.6	99.3	145.8
1995	95Q3	\$3.33	134.7	\$30.51	131.7	\$16.02	119.9	130.5	130.5	\$229.50	105.6	\$0.38	93.8	(\$1.00)	-1.0	102.7	124.1
1995	95Q4	\$3.33	134.9	\$28.43	122.7	\$21.81	163.2	126.9	126.9	\$192.09	88.4	\$0.40	97.8	\$0.95	111.7	94.9	118.6
1995	95AV	\$3.41	138.1	\$30.25	130.5	\$17.82	133.4	130.8	130.8	\$211.29	97.2	\$0.39	94.0	\$0.90	105.5	98.3	122.3
1996	96Q1	\$4.26	172.4	\$30.62	132.2	\$17.31	129.6	131.9	131.9	\$237.58	109.3	\$0.39	94.0	(\$1.00)	-1.0	105.6	132.5
1996	96Q2	\$5.11	206.9	\$31.35	135.3	\$34.29	256.7	147.8	147.8	\$237.47	109.3	\$0.43	103.7	\$1.02	119.1	110.2	146.5
1996	96Q3	\$4.48	181.2	\$36.31	156.7	\$16.92	126.6	153.6	153.6	\$312.26	143.7	\$0.44	106.7	\$1.32	154.8	138.8	153.9
1996	96Q4	\$4.05	164.1	\$35.94	155.1	(\$1.00)	-1.0	155.1	155.1	\$237.47	109.3	\$0.45	108.9	(\$1.00)	-1.0	109.2	144.4
1996	96AV	\$4.46	180.5	\$32.73	141.3	\$19.22	143.9	141.5	141.5	\$285.98	122.4	\$0.43	105.1	\$1.09	128.5	120.2	141.7
1997	97Q1	\$3.60	145.8	\$31.47	135.8	\$20.81	156.0	137.9	137.9	\$229.63	105.7	\$0.42	103.5	\$0.97	113.7	106.9	129.9
1997	97Q2	\$7.09	286.8	\$34.08	147.1	\$24.42	182.8	150.7	150.7	\$269.94	124.2	\$0.46	111.7	\$1.12	131.6	123.3	165.7
1997	97Q3	\$4.08	165.1	\$31.55	136.2	\$24.15	180.8	140.8	140.8	\$257.62	118.5	\$0.49	119.3	\$1.06	124.7	119.9	138.6
1997	97Q4	\$3.65	147.9	\$37.66	162.5	\$18.84	141.1	160.3	160.3	\$288.22	123.4	\$0.45	110.8	(\$1.00)	-1.0	120.4	147.8
1997	97AV	\$4.24	171.7	\$32.92	142.1	\$21.39	160.1	143.9	143.9	\$246.29	113.3	\$0.45	110.8	\$1.01	117.9	113.8	139.6
1998	98Q1	\$5.30	214.4	\$36.20	156.2	\$30.88	231.2	164.0	164.0	\$292.00	134.4	\$0.48	116.2	(\$1.00)	-1.0	129.9	164.4
1998	98Q2	\$4.76	192.6	\$36.52	157.6	\$24.23	181.4	160.1	160.1	\$284.38	121.7	\$0.48	116.0	(\$1.00)	-1.0	120.3	155.8
1998	98Q3	\$2.69	230.4	\$35.21	141.9	\$34.18	255.9	162.6	162.6	\$295.21	135.8	\$0.22	126.6	(\$1.00)	-1.0	133.6	167.5
1998	98Q4	\$4.33	175.0	\$34.53	149.0	\$28.64	214.4	155.8	155.8	\$291.27	134.0	\$0.51	125.1	(\$1.00)	-1.0	131.9	153.1
1998	98AV	\$4.89	198.0	\$35.72	154.2	\$26.54	198.7	158.7	158.7	\$283.01	130.2	\$0.50	122.0	(\$1.00)	-1.0	128.2	158.1
1999	99Q1	\$5.91	239.4	\$36.57	157.8	\$18.57	139.0	155.9	155.9	\$335.29	154.3	\$0.59	144.9	\$0.54	63.8	134.1	163.5
1999	99Q2	\$5.34	216.0	\$35.09	151.4	\$21.90	163.9	152.7	152.7	\$326.59	150.3	\$0.61	149.8	\$1.15	135.3	147.1	161.8
1999	99Q3	\$4.42	178.8	\$36.62	158.1	\$24.59	184.1	160.7	160.7	\$298.62	137.4	\$0.52	125.5	(\$1.00)	-1.0	107.2	147.7
1999	99Q4	\$4.11	166.5	\$33.96	146.6	\$33.04	247.3	156.9	156.9	\$305.27	140.5	\$0.50	121.1	\$1.46	171.1	143.0	154.3
1999	99AV	\$4.94	199.8	\$35.23	152.0	\$22.78	170.5	153.9	153.9	\$310.56	142.9	\$0.54	132.0	\$1.41	165.3	145.3	159.2
2000	00Q1	\$5.11	206.9	\$36.84	159.0	\$21.73	162.7	159.4	159.4	\$341.22	157.0	\$0.45	110.2	(\$1.00)	-1.0	145.7	164.5
2000	00Q2	\$4.41	178.5	\$40.71	175.7	\$11.84	88.6	166.8	166.8	\$374.75	172.5	\$0.47	114.7	\$1.25	146.2	155.9	165.5
2000	00Q3	\$6.42	259.7	\$43.57	188.0	\$22.69	169.8	186.2	186.2	\$355.44	163.6	\$0.47	114.0	\$0.96	111.9	143.5	185.8
2000	00Q4	\$4.77	193.0	\$38.42	166.0	\$43.65	326.8	182.4	182.4	\$288.39	132.7	\$0.51	123.3	\$1.16	136.3	131.6	168.9
2000	00AV	\$5.25	212.6	\$40.02	173.0	\$20.56	153.9	170.8	170.8	\$346.82	159.6	\$0.47	115.2	\$1.18	138.8	146.8	170.7
2001	01Q1	\$4.14	167.6	\$40.40	175.5	\$37.17	278.2	185.0	185.0	\$311.48	143.3	\$0.51	123.8	\$0.00	0.0	138.6	170.0
2001	01Q2	\$4.78	193.6	\$35.62	154.0	\$13.66	102.3	148.5	148.5	\$282.89	130.2	\$0.50	122.6	\$0.00	0.0	128.3	151.5

Colorado Construction Cost Index



COMMENTS:

This Colorado Construction Cost Index is composed of six indicator items and based on the total quantities used during 1987 (unit index=100).

Earthwork (Complete in place):

\$4.78 a cubic yard. This is up \$0.64 from the last quarter, and up \$0.37 from the same quarter a year ago. The cost increase reflects the higher gas prices in most parts of Colorado.

Bituminous Pavement:

\$35.62 a ton. This is down \$4.78 from the last quarter, and down \$5.09 from the same quarter a year ago. A lower cost of asphalt material from the asphalt suppliers and a few large jobs decreased this price.

Concrete Pavement:

\$13.66 a square yard. This is down \$23.61 from the last quarter, but up \$1.82 from the same quarter a year ago. Two large projects on SH 287 and SH 40 in Eastern Colorado having high concrete pavement quantities influenced the price decrease. The abundance of aggregate, strong competition for work, and low cost cement in this area contributed to the reduction of this price.

Structural Steel:

Not item was bid during this quarter. This item was dropped from consideration for this quarter's index.

Structural Concrete:

\$282.89 a cubic yard. This is down \$28.59 from the prior quarter, and down \$91.86 from the same quarter a year ago. This quarter's decrease is due to relatively low bid prices from a large structural project on I-270 (Phase IV) in Adams County.

Reinforcing Steel:

\$0.50 a pound. This is down \$0.01 from last quarter, and up \$ 0.03 from the same quarter a year ago. This quarter's slight decrease cost is a result of a competitive market in the reinforcing steel industry.

ADDITIONAL INFORMATION:

For the 2nd quarter, the category indices showing a decrease were Bituminous Pavement, Concrete Pavement, Structural Concrete, and Reinforcing Steel. The Earthwork index level increased. There was no Structural Steel bid during the quarter to acquire adequate cost data.

45 projects were bid this quarter for a total of \$91,582,494.81. The competition for projects decreased from 4.81 to 3.96 bidders for each project on average. By comparison,

42 projects were bid last quarter and 35 in the same quarter last year.

Twelve maintenance contract projects were bid this quarter.

Two metric projects were bid this quarter. Metric quantities have been converted into English units for inclusion in this report.

No Design/Build projects were bid this quarter.

There were no Lump Sum Bids.