

# STATE OF COLORADO

---



**DEPARTMENT OF TRANSPORTATION**  
**Contracts and Market Analysis Branch**  
4201 East Arkansas Avenue, 4<sup>th</sup> Floor  
Denver, Colorado 80222  
(303) 757-9736

August 18, 2006

## COLORADO CONSTRUCTION COST INDEX REPORT Calendar year 2006 Second Quarter

Prepared by  
Gus Bieber  
Engineering Estimates and Market Analysis Unit of  
Contracts and Market Analysis Branch

Prepared for  
Craig Siracusa, Chief Engineer

# STATE OF COLORADO



**DEPARTMENT OF TRANSPORTATION**  
**Contracts and Market Analysis Branch**  
4201 East Arkansas Avenue, 4<sup>th</sup> Floor  
Denver, Colorado 80222  
(303) 757-9736

## SUMMARY

### CONSTRUCTION COST INDEX FOR SELECTED HIGHWAY CONSTRUCTION ITEMS

2nd QUARTER ENDING June 30, 2006

Index for this quarter.....	270.9
Index for last quarter.....	293.8
Point change from last quarter.....	-22.9
Percentage change from last quarter.....	-7.8%
Index for same quarter of last year.....	289.8
Point change from same quarter last year.....	-18.9
Percentage change from this quarter last year.....	-6.5 %

Average number of bidders this quarter.....	3.28
Change in number of bidders from last quarter.....	- 23.2%

NOTE: All information shown in this publication was assembled using 1987 as the base year.

**Summary Report for all the projects awarded between 4/1/2006 And 6/30/2006**

<i>Project Amount</i>	<i>No. of Projects</i>	<i>No. of Bidders</i>	<i>Total Contract Amt.</i>	<i>Avg. # of Bids</i>
<i>\$0.00 to \$49,999.99</i>	0			
<i>\$50,000.00 to \$99,999.99</i>	1	5	\$73,752.81	5.0
<i>\$100,000.00 to \$249,999.99</i>	6	15	\$1,047,759.55	2.5
<i>\$250,000.00 to \$499,999.99</i>	9	35	\$3,635,333.60	3.9
<i>\$500,000.00 to \$999,999.99</i>	7	25	\$5,054,368.78	3.6
<i>1,000,000.00 to \$2,499,999.99</i>	10	27	\$13,772,752.33	2.7
<i>2,500,000.00 to \$4,999,999.99</i>	4	14	\$14,144,006.62	3.5
<i>5,000,000.00 to \$9,999,999.99</i>	3	12	\$16,774,936.05	4.0
<i>10,000,000.00 to \$19,999,999.99</i>	3	8	\$40,943,019.20	2.7
<i>20,000,000.00 to \$49,499,999.99</i>	0			
<i>50,000,000.00 or Greater</i>	0			

<b>Total</b>	<b>43</b>	<b>141</b>	<b>\$95,445,928.94</b>
--------------	-----------	------------	------------------------

The number of bidders on all projects awards during this period averaged 3.28 bidders per contract.  
 Average cost per project is \$1,667,913.50 (avg. cci 1994=118.8 / avg. cci 1998 =158.1) in 1994 dollars.

**CCI ITEMS USED FROM 4/1/2006 TO 6/30/2006**

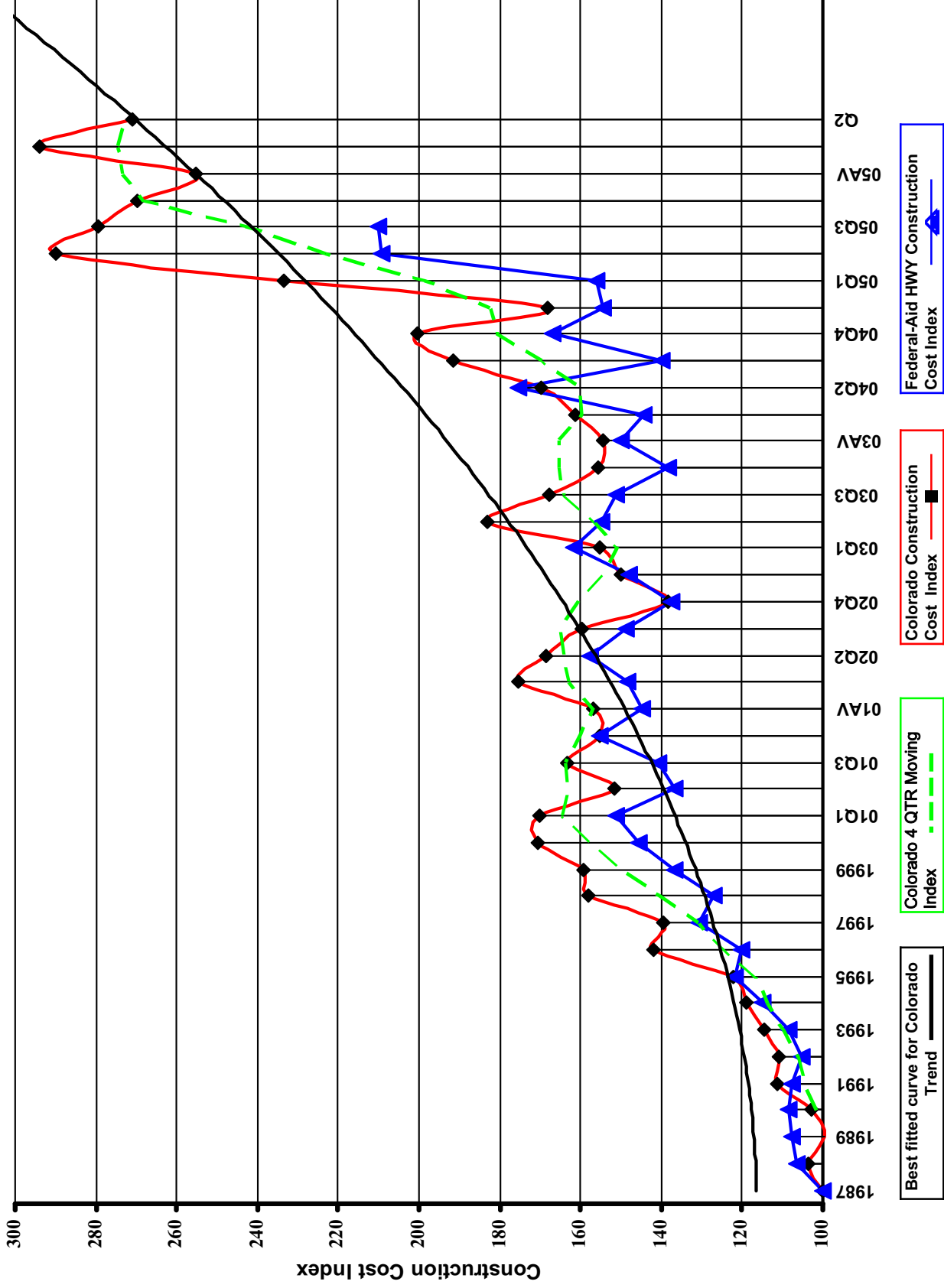
ITEM CODE	# OF ITEM	QUANTITY	PRICE	UNIT PRICE	INDEX
203-00000 To 203-00060 203-00062 To 203-00210 203-00400 To 203-00500	25	English (CY) 259,639.19	\$2,773,547.96	\$10.68	
203-01020 To 203-01030 209-00000 To 209-00050	0	Metric (CM) 0.00	\$0.00	\$0.00	
<b>UNCLASSIFIED EXCAV (CIP)</b>	<b>25</b>	<b>259,639.19<sup>CY</sup></b>	<b>\$2,773,547.96</b>	<b>\$10.68</b>	<b>432.4</b>
403-00720, 403-01000, 403-01010, 403-02000, 403-09121 To 403-09500 403-31300 To 403 36447 403-91401 To 403-95353 411-03100 To 411-03355 411-10010 To 411-90010 (Gal/Lit) Gallon & Liter are converted to Ton	79	English (TON) 440,172.63	\$25,904,164.00	\$58.85	
	0	Metric (MT) 0.00	\$0.00	\$0.00	
<b>HOT MIX ASPHALT (H A)</b>	<b>79</b>	<b>440,172.63 T</b>	<b>\$25,904,164.00</b>	<b>\$58.85</b>	<b>255.1</b>
412-00000 To 412-00050 412-00700 To 412-01352 412-03000 To 412-03000	7	English (SY) 603,933.02	\$17,153,619.44	\$28.40	
	0	Metric (SM) 0.00	\$0.00	\$0.00	
<b>CONCRETE PAVEMENT (9")</b>	<b>7</b>	<b>603,933.02<sup>SY</sup></b>	<b>\$17,153,619.44</b>	<b>\$28.40</b>	<b>212.6</b>
<b>SURFACING TOTAL INDEX</b>					<b>249.7</b>
509-00000 To 509-00000	2	English (LB) 46,443.00	\$89,585.48	\$1.93	
	0	Metric (KG) 0.00	\$0.00	\$0.00	
<b>STRUCTURAL STEEL</b>	<b>2</b>	<b>46,443.00<sup>LB</sup></b>	<b>\$89,585.48</b>	<b>\$1.93</b>	<b>226.1</b>
601-01022 To 601-01022 601-01030 To 601-01060 601-03030 To 601-05064	12	English (CY) 2,905.90	\$1,238,496.08	\$426.20	
	0	Metric (CM) 0.00	\$0.00	\$0.00	
<b>STRUCTURAL CONCRETE</b>	<b>12</b>	<b>2,905.90<sup>CY</sup></b>	<b>\$1,238,496.08</b>	<b>\$426.20</b>	<b>196.1</b>
602-00000 To 602-00000 602-00020 To 602-00020	15	English (LB) 437,498.00	\$486,886.93	\$1.11	
	0	Metric (KG) 0.00	\$0.00	\$0.00	
<b>REINFORCING STEEL</b>	<b>15</b>	<b>437,498.00<sup>LB</sup></b>	<b>\$486,886.93</b>	<b>\$1.11</b>	<b>271.4</b>
<b>STRUCTURAL TOTAL INDEX</b>					<b>216.8</b>
<b>COMPOSITE INDEX =</b>					<b>270.9</b>

Sum of the 6 categories cost = \$47,646,299.89

HBP Unit Price per CY = \$116.52

Concrete Pavement Unit Price per CY = \$113.61

Colorado Highway Construction Cost Index Graph and Tabulations (1987 Base Year)



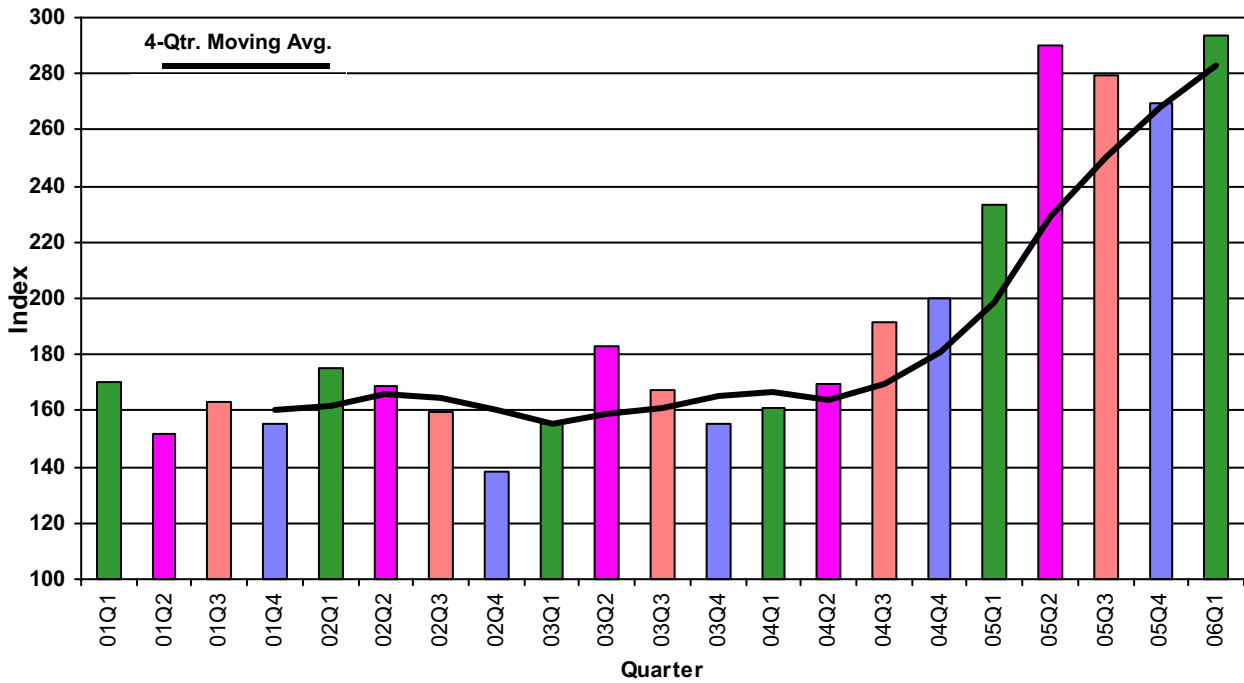
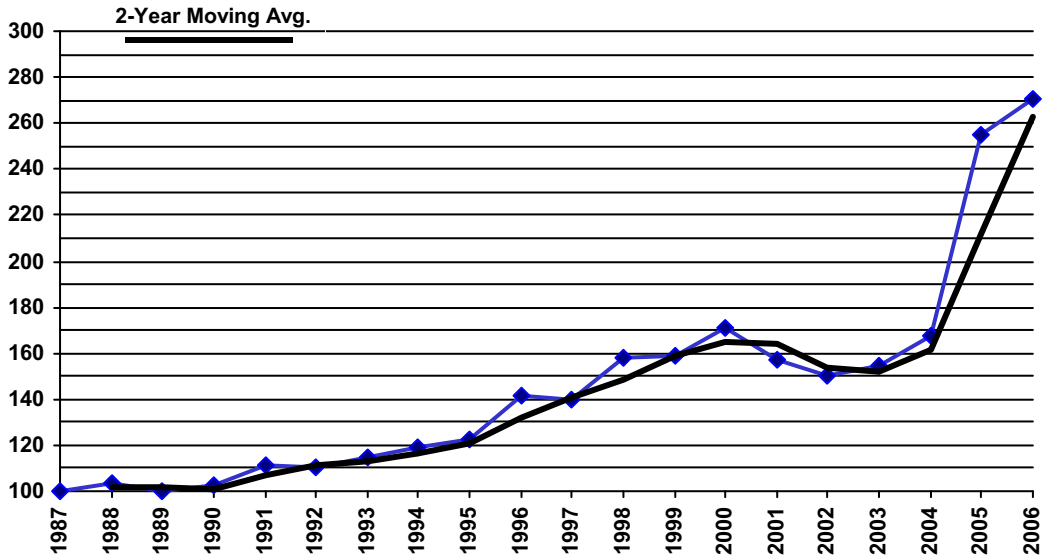
### Colorado Highway Construction Cost Index Graph and Tabulations (1987 Base Year)

YEAR	QTR	Earthwork		Asph. Pavement		Concrete Pavement		Surfacing		Structural Concrete		Reinforcing Steel		Structural Steel		Composite	
		Bid Price	Index	Bid Price	Index	Bid Price	Index	Bid Price	Index	Bid Price	Index	Bid Price	Index	Bid Price	Index	Bid Price	Index
1987	1987	\$2.47	100.0	\$23.17	100.0	\$13.36	100.0	100.0	100.0	\$217.32	100.0	\$0.41	100.0	\$0.85	100.0	\$0.85	100.0
1988	1988	\$2.92	118.1	\$23.88	103.0	\$13.84	103.6	103.1	103.1	\$195.02	89.7	\$0.45	110.7	\$0.89	104.1	\$0.89	103.7
1989	1989	\$2.57	103.9	\$23.67	102.2	\$11.65	87.2	100.6	100.6	\$199.41	91.8	\$0.40	97.8	\$0.88	103.5	\$0.88	99.6
1990	1990	\$2.78	112.5	\$23.98	103.5	\$15.09	113.0	104.5	104.5	\$190.86	87.8	\$0.37	90.8	\$0.99	116.0	\$0.99	102.7
1991	1991	\$3.31	133.8	\$26.25	113.3	\$16.03	120.0	114.0	114.0	\$195.43	89.9	\$0.38	93.1	\$0.89	104.4	\$0.89	111.2
1992	1992	\$2.77	112.3	\$26.20	113.1	\$23.82	178.3	119.8	119.8	\$216.87	99.8	\$0.36	87.9	\$0.71	82.8	\$0.71	110.7
1993	1993	\$3.25	131.4	\$27.74	119.7	\$16.75	125.4	121.3	121.3	\$212.43	97.7	\$0.37	90.1	\$0.79	93.0	\$0.79	114.7
1994	1994	\$3.56	144.2	\$28.40	122.6	\$18.78	140.6	124.4	124.4	\$219.94	101.2	\$0.37	89.7	\$0.67	78.8	\$0.67	118.8
1995	1995	\$3.41	138.1	\$30.25	130.5	\$17.82	133.4	130.8	130.8	\$211.29	97.2	\$0.39	94.0	\$0.90	105.5	\$0.90	122.3
1996	1996	\$4.46	180.5	\$32.73	141.3	\$19.22	143.9	141.5	141.5	\$265.98	122.4	\$0.43	105.1	\$1.09	128.5	\$1.09	141.7
1997	1997	\$4.24	171.7	\$32.92	142.1	\$21.39	160.1	143.9	143.9	\$246.29	113.3	\$0.45	110.8	\$1.01	117.9	\$1.01	139.6
1998	1998	\$4.89	198.0	\$35.72	154.2	\$26.54	198.7	158.7	158.7	\$283.01	130.2	\$0.50	122.0	(\$1.00)	-1.0	\$1.00	158.1
1999	1999	\$4.94	199.8	\$35.23	152.0	\$22.78	170.5	153.9	153.9	\$310.56	142.9	\$0.54	132.0	\$1.41	165.3	\$1.41	159.2
2000	2000	\$5.25	212.6	\$40.02	173.0	\$20.56	153.9	170.8	170.8	\$346.82	159.6	\$0.47	115.2	\$1.18	138.8	\$1.18	170.7
2001	01Q1	\$4.14	167.6	\$40.40	175.5	\$37.17	278.2	185.0	185.0	\$311.48	143.3	\$0.51	123.8	\$0.00	0.0	\$0.00	170.0
2001	01Q2	\$4.78	193.6	\$35.62	154.0	\$13.66	102.3	148.5	148.5	\$282.89	130.2	\$0.50	122.6	\$0.00	0.0	\$0.00	151.5
2001	01Q3	\$4.29	173.6	\$41.20	177.9	\$20.63	154.5	175.4	175.4	\$297.55	136.9	\$0.50	120.8	\$1.29	151.5	\$1.29	163.4
2001	01Q4	\$3.13	126.6	\$34.33	147.6	\$47.93	358.8	169.8	169.8	\$335.74	154.5	\$0.45	110.2	\$0.00	0.0	\$0.00	155.3
2001	01AV	\$4.19	169.5	\$38.67	167.4	\$17.45	130.6	163.2	163.2	\$303.22	139.5	\$0.50	120.9	\$1.29	151.5	\$1.29	156.8
2002	02Q1	\$6.25	252.9	\$37.53	163.1	\$31.12	233.0	169.3	169.3	\$293.38	135.0	\$0.53	129.6	\$0.00	0.0	\$0.00	175.4
2002	02Q2	\$5.69	230.3	\$39.67	171.5	\$28.33	212.1	175.4	175.4	\$294.41	135.5	\$0.50	121.3	\$0.70	82.4	\$0.70	168.6
2002	02Q3	\$4.42	178.8	\$34.98	151.4	\$25.51	190.9	155.1	155.1	\$299.12	137.7	\$0.49	120.5	\$2.11	247.3	\$2.11	159.6
2002	02Q4	\$2.31	93.3	\$38.71	167.5	\$21.26	159.2	166.2	166.2	\$257.37	118.4	\$0.49	120.7	\$0.81	95.0	\$0.81	138.1
2002	02AV	\$3.74	151.2	\$37.99	164.7	\$24.81	185.7	166.2	166.2	\$285.35	131.3	\$0.50	121.3	\$0.78	91.9	\$0.78	150.1
2003	03Q1	\$4.23	171.2	\$36.48	158.2	\$24.92	186.6	160.4	160.4	\$283.25	130.4	\$0.57	137.9	\$0.00	0.0	\$0.00	155.2
2003	03Q2	\$10.00	404.8	\$40.35	174.9	\$43.68	327.0	189.9	189.9	\$327.84	150.9	\$0.62	151.9	\$0.31	36.3	\$0.31	183.2
2003	03Q3	\$4.64	187.9	\$41.05	177.5	\$18.89	141.4	173.5	173.5	\$336.84	155.0	\$0.58	140.5	\$1.05	123.1	\$1.05	167.6
2003	03Q4	\$3.85	155.7	\$40.10	173.5	\$19.51	146.1	170.3	170.3	\$267.39	123.1	\$0.51	125.0	\$0.00	0.0	\$0.00	155.7
2003	03AV	\$4.42	178.9	\$38.23	165.7	\$20.91	156.6	164.1	164.1	\$289.44	133.2	\$0.55	133.4	\$0.72	84.7	\$0.72	154.4
2004	04Q1	\$3.94	159.7	\$36.03	156.1	\$31.13	233.0	163.5	163.5	\$297.69	137.0	\$0.71	172.4	\$1.78	208.9	\$1.78	161.3
2004	04Q2	\$5.84	236.6	\$35.97	155.9	\$28.42	212.8	161.2	161.2	\$297.92	137.1	\$0.78	190.1	\$1.13	132.9	\$1.13	169.6
2004	04Q3	\$4.38	177.1	\$43.33	188.0	\$27.59	206.5	189.0	189.0	\$350.71	161.4	\$0.91	221.3	\$2.70	316.3	\$2.70	191.6
2004	04Q4	\$7.39	298.9	\$41.45	179.2	\$40.01	299.5	191.3	191.3	\$305.55	140.6	\$0.74	179.9	\$0.00	0.0	\$0.00	200.3
2004	04AV	\$4.60	186.1	\$37.43	162.1	\$28.96	216.8	167.2	167.2	\$323.50	148.9	\$0.83	202.7	\$1.26	147.6	\$1.26	168.0
2005	05Q1	\$9.43	381.7	\$41.99	182.3	\$60.10	449.9	208.8	208.8	\$443.32	204.0	\$0.91	222.2	\$1.10	128.9	\$1.10	233.3
2005	05Q2	\$16.07	650.5	\$44.19	192.4	\$28.54	213.6	193.1	193.1	\$540.39	248.7	\$0.98	240.0	\$0.00	0.0	\$0.00	289.8
2005	05Q3	\$9.74	394.2	\$57.71	249.5	\$34.29	256.7	249.9	249.9	\$491.90	226.4	\$0.97	237.3	\$3.50	410.2	\$3.50	279.3
2005	05Q4	\$12.52	506.9	\$52.73	228.4	\$56.18	420.5	247.4	247.4	\$407.63	187.6	\$0.81	198.2	\$0.97	113.7	\$0.97	269.7
2005	05AV	\$12.90	522.0	\$44.17	191.8	\$30.69	229.8	194.7	194.7	\$508.77	234.1	\$0.96	232.9	\$1.01	118.4	\$1.01	255.2
2006	06Q1	\$11.48	464.6	\$54.99	238.8	\$47.80	357.8	249.7	249.7	\$566.84	260.9	\$1.22	296.5	\$0.00	0.0	\$0.00	293.8
2006	Q2	\$10.68	432.4	\$58.85	255.1	\$28.40	212.6	249.7	249.7	\$426.20	196.1	\$1.11	271.4	\$1.93	226.1	\$1.93	270.9

View Annual/Qtr

View Tabular Report

## Colorado Construction Cost Index



### Comments:

This Colorado Construction Cost Index is composed of six indicator items and based on bid prices relative to the unit prices of 1987 (unit index=100). The Index varies due to type and location of projects in addition overall economic conditions.

### Earthwork (Excavation and Embankment):

The average price was \$10.68 a cu. yd. which is down \$0.80 from the previous quarter. One project in Region 3 this quarter had large quantities which contributed to this decline.

### Hot Mix Asphalt:

The average price was \$58.85 a ton which is up \$3.86 from the previous quarter. A steady increase in fuel prices and the shortage in binder supply contributed to this rise, continuing the recent up trend.

### Concrete Pavement:

The average price was \$28.40 a sq. yd. which is down \$19.40 from the previous quarter. Two projects in Region 2 and Region 4 with relative large quantities contributed to the decline.

### Structural Steel:

The average price was \$1.93 a lb. which is up \$0.96 from 2 quarters ago. There was an insignificant amount of structural steel bid last quarter. Only two projects utilized this item this quarter. One project had a small quantity and the other was located in a remote location, which impacted the average price.

### Structural Concrete:

The average price was \$426.20 a cu. yd. which is down \$140.64 from the previous quarter. Several projects with relative large quantities contributed to the decline.

### Reinforcing Steel:

The average price was \$1.11 a lb which is down \$0.11 from the previous quarter. One project with a large quantity in Region 2 contributed to the decline.

### ADDITIONAL INFORMATION:

For the 2<sup>nd</sup> quarter, the category indices showing an increase were Hot Mix Asphalt and Structural Steel. The category indices showing a decrease were Earthwork, Concrete Pavement, Structural Steel, and Reinforcing Steel.

43 projects were bid and awarded this quarter for a total of \$95,445,928.94. By comparison, 64 projects were bid last quarter. The six categories for CCI items totaled \$47,646,299.89 which is 49.9% of total awarded amount. 19 maintenance contract projects were bid this quarter. No metric projects were bid this quarter. No Design/Build or Lump Sum projects were bid this quarter.

The competition for projects decreased to 3.28 bidders from 4.27 bidders for each project on average.