

# STATE OF COLORADO

---



**DEPARTMENT OF TRANSPORTATION**  
**Contracts and Market Analysis Branch**  
4201 East Arkansas Avenue, 4<sup>th</sup> Floor  
Denver, Colorado 80222  
(303) 757-9736

July-September 2011

## COLORADO CONSTRUCTION COST INDEX REPORT Calendar Year 2011 Third Quarter

Prepared by  
Shawn Yu, Interim Manager  
Engineering Estimates and Market Analysis Unit of  
Contracts and Market Analysis Branch

Prepared for  
Tim Harris, Chief Engineer

# STATE OF COLORADO



**DEPARTMENT OF TRANSPORTATION**  
**Contracts and Market Analysis Branch**  
4201 East Arkansas Avenue, 4<sup>th</sup> Floor  
Denver, Colorado 80222  
(303) 757-9736

## SUMMARY

### CONSTRUCTION COST INDEX FOR SELECTED HIGHWAY CONSTRUCTION ITEMS

3<sup>rd</sup> QUARTER ENDING September 30, 2011

Index for this quarter.....	303.2
Index for last quarter.....	274.3
Point change from last quarter.....	28.9
Percentage change from last quarter.....	10.5%
Index for same quarter of last year.....	270.8
Point change from same quarter last year.....	32.4
Percentage change from this quarter last year.....	12.0%
4-quarter moving average.....	274.4

Average number of bidders this quarter.....	4.30
Change in number of bidders from last quarter.....	-12.1%

NOTE: All information shown in this publication was assembled using 1987 as the base year.

**Summary Report for all the projects awarded betwee 7/1/2011 And 9/30/2011**

<i>Project Amount</i>	<i>No. of Projects</i>	<i>No. of Bidders</i>	<i>Total Contract Amt.</i>	<i>Avg. # of Bids</i>
<i>\$0.00 to \$49,999.99</i>	0			
<i>\$50,000.00 to \$99,999.99</i>	0			
<i>\$100,000.00 to \$249,999.99</i>	7	29	\$1,510,556.14	4.1
<i>\$250,000.00 to \$499,999.99</i>	3	15	\$1,009,635.00	5.0
<i>\$500,000.00 to \$999,999.99</i>	12	41	\$8,256,241.34	3.4
<i>1,000,000.00 to \$2,499,999.99</i>	9	39	\$14,249,164.70	4.3
<i>2,500,000.00 to \$4,999,999.99</i>	4	22	\$13,472,327.70	5.5
<i>5,000,000.00 to \$9,999,999.99</i>	2	13	\$10,890,454.17	6.5
<i>10,000,000.00 to \$19,999,999.99</i>	0			
<i>20,000,000.00 to \$49,499,999.99</i>	0			
<i>50,000,000.00 or Greater</i>	0			

<b>Total</b>	<b>37</b>	<b>159</b>	<b>\$49,388,379.05</b>
--------------	-----------	------------	------------------------

The number of bidders on all projects awards during this period averaged **4.30** bidders per contract.  
 Average cost per project is **\$1,003,015.44** (avg. cci 1994=118.8 / avg. cci 1998 =158.1) in 1994 dollars.

**CCI ITEMS USED FROM 7/1/2011 TO 9/30/2011**

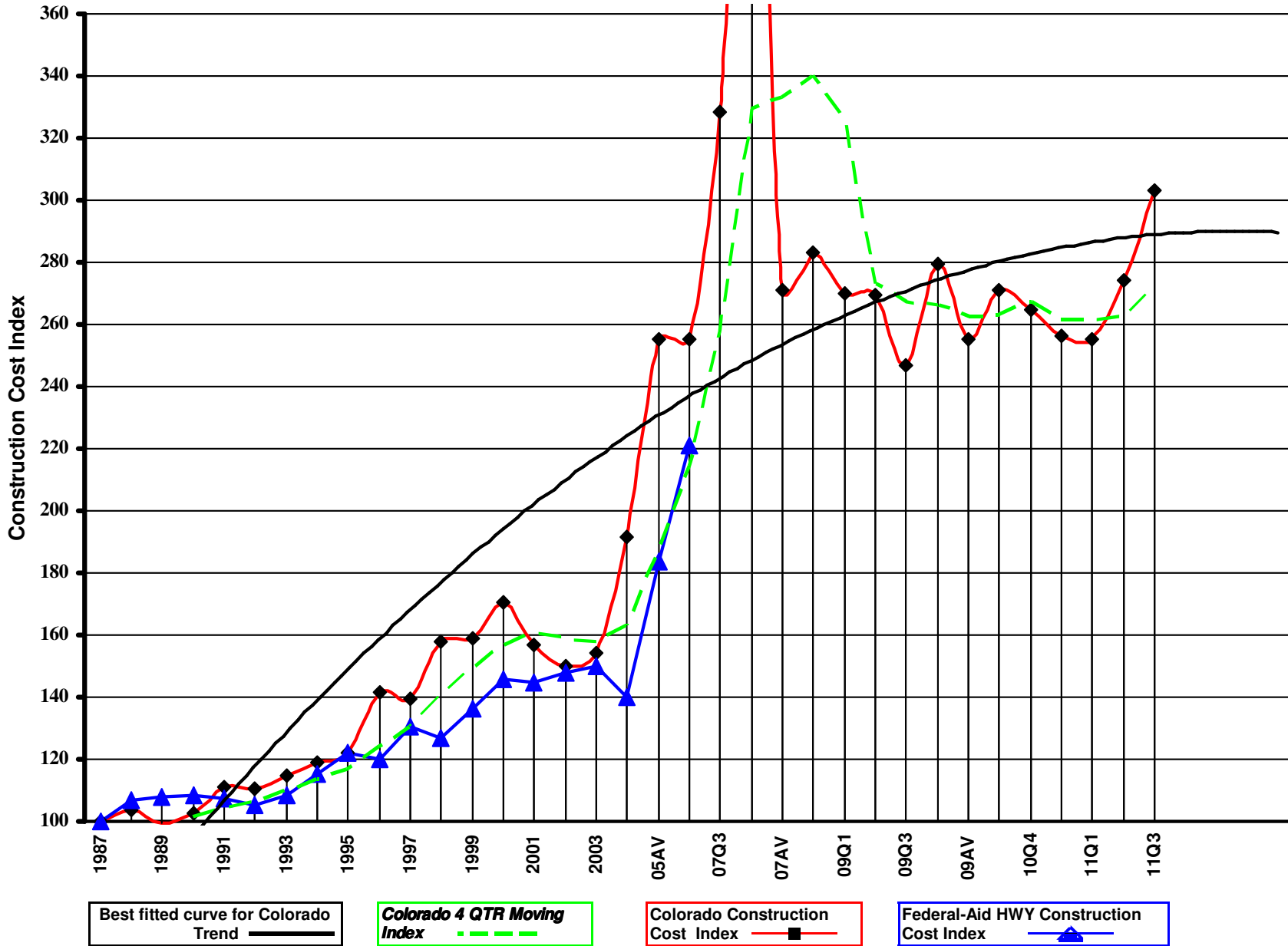
ITEM CODE	# OF ITEM	QUANTITY	PRICE	UNIT PRICE	INDEX
203-00000 To 203-00060 203-00062 To 203-00210 203-00400 To 203-00500	35	English (CY) 246,545.00	\$2,345,195.40	\$9.51	
203-01020 To 203-01030 209-00000 To 209-00050	0	Metric (CM) 0.00	\$0.00	\$0.00	
<b>UNCLASSIFIED EXCAV (CIP)</b>	<b>35</b>	<b>246,545.00<sup>CY</sup></b>	<b>\$2,345,195.40</b>	<b>\$9.51</b>	<b>385.0</b>
403-00720, 403-01000, 403-01010, 403-02000, 403-09121 To 403-09500	58	English (TON) 135,682.70	\$10,661,226.25	\$78.57	
403-31300 To 403 36447 403-91401 To 403-95353 411-03100 To 411-03355 411-10010 To 411-90010 (Gal/Lit) Gallon & Liter are converted to Ton	0	Metric (MT) 0.00	\$0.00	\$0.00	
<b>HOT MIX ASPHALT (H A)</b>	<b>58</b>	<b>135,682.70 T</b>	<b>\$10,661,226.25</b>	<b>\$78.57</b>	<b>340.0</b>
412-00000 To 412-00050 412-00700 To 412-01352 412-03000 To 412-03000	1	English (SY) 81,314.69	\$2,195,518.50	\$27.00	
	0	Metric (SM) 0.00	\$0.00	\$0.00	
<b>CONCRETE PAVEMENT (9")</b>	<b>1</b>	<b>81,314.69<sup>SY</sup></b>	<b>\$2,195,518.50</b>	<b>\$27.00</b>	<b>202.1</b>
<b>SURFACING TOTAL INDEX</b>					<b>325.0</b>
509-00000 To 509-00000	0	English (LB) 0.00	\$0.00	\$0.00	
	0	Metric (KG) 0.00	\$0.00	\$0.00	
<b>STRUCTURAL STEEL</b>	<b>0</b>	<b>0.00<sup>LB</sup></b>	<b>\$0.00</b>	<b>\$0.00</b>	<b>0.0</b>
601-01022 To 601-01022 601-01030 To 601-01060 601-03030 To 601-05064	11	English (CY) 2,923.23	\$1,193,216.24	\$408.18	
	0	Metric (CM) 0.00	\$0.00	\$0.00	
<b>STRUCTURAL CONCRETE</b>	<b>11</b>	<b>2,923.23<sup>CY</sup></b>	<b>\$1,193,216.24</b>	<b>\$408.18</b>	<b>187.8</b>
602-00000 To 602-00000 602-00020 To 602-00020	15	English (LB) 470,478.00	\$437,037.25	\$0.93	
	0	Metric (KG) 0.00	\$0.00	\$0.00	
<b>REINFORCING STEEL</b>	<b>15</b>	<b>470,478.00<sup>LB</sup></b>	<b>\$437,037.25</b>	<b>\$0.93</b>	<b>226.6</b>
<b>STRUCTURAL TOTAL INDEX</b>					<b>197.2</b>
<b>COMPOSITE INDEX =</b>					<b>303.2</b>

Sum of the 6 categories cost = \$16,832,193.64

HBP Unit Price per CY = \$155.58

Concrete Pavement Unit Price per CY = \$108.00

Colorado Highway Construction Cost Index Graph and Tabulations (1987 Base Year)

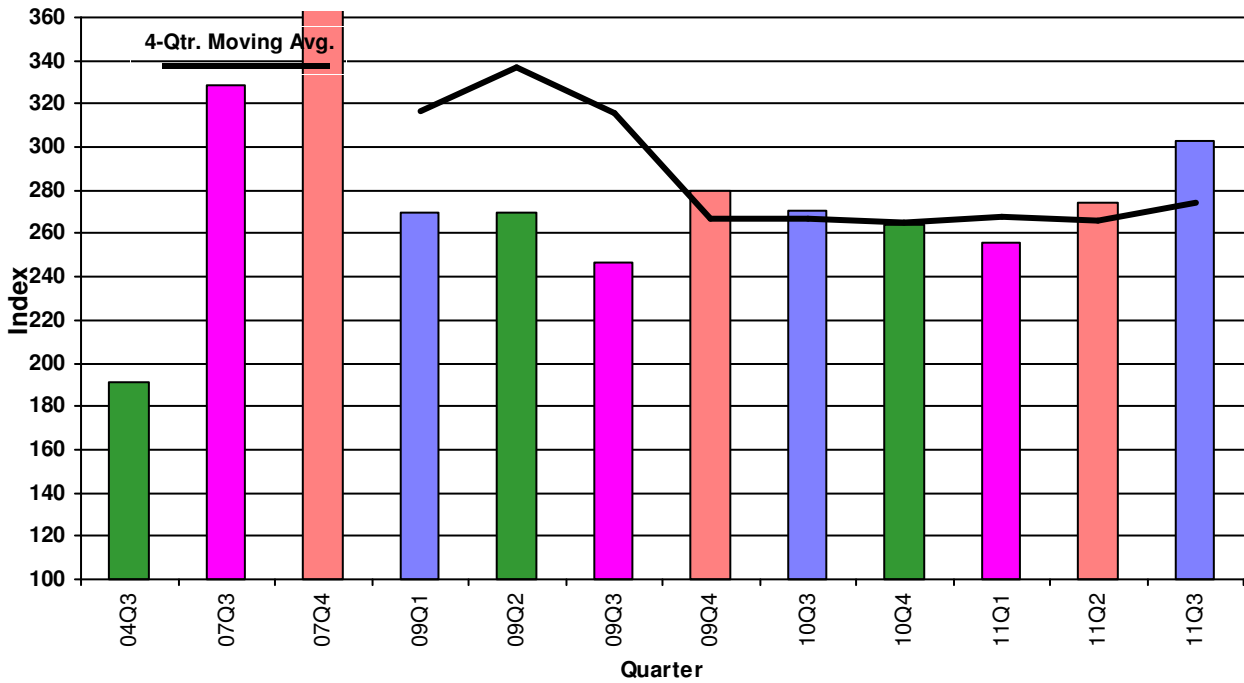
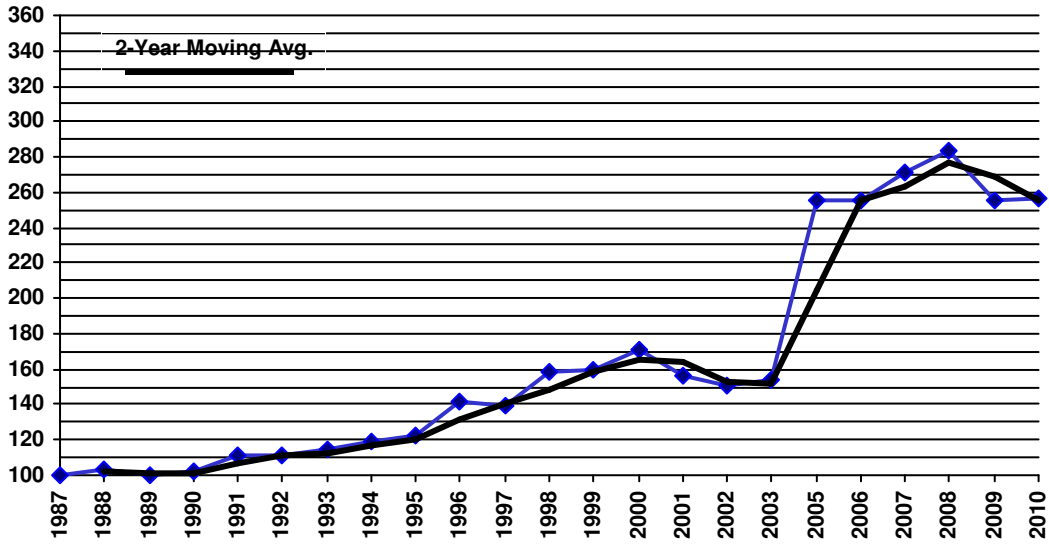


YEAR	QTR.	Earthwork		Asph. Pavement		Concrete Pavement		Surfacing	Structural Concrete		Reinforcing Steel		Structural Steel		Structural	Composite
		Bid Price	Index	Bid Price	Index	Bid Price	Index	Index	Bid Price	Index	Bid Price	Index	Bid Price	Index	Index	Index
1987	1987	\$2.47	100.0	\$23.17	100.0	\$13.36	100.0	100.0	\$217.32	100.0	\$0.41	100.0	\$0.85	100.0	100.0	100.0
1988	1988	\$2.92	118.1	\$23.88	103.0	\$13.84	103.6	103.1	\$195.02	89.7	\$0.45	110.7	\$0.89	104.1	96.7	103.7
1989	1989	\$2.57	103.9	\$23.67	102.2	\$11.65	87.2	100.6	\$199.41	91.8	\$0.40	97.8	\$0.88	103.5	95.3	99.6
1990	1990	\$2.78	112.5	\$23.98	103.5	\$15.09	113.0	104.5	\$190.86	87.8	\$0.37	90.8	\$0.99	116.0	94.1	102.7
1991	1991	\$3.31	133.8	\$26.25	113.3	\$16.03	120.0	114.0	\$195.43	89.9	\$0.38	93.1	\$0.89	104.4	93.5	111.2
1992	1992	\$2.77	112.3	\$26.20	113.1	\$23.82	178.3	119.8	\$216.87	99.8	\$0.36	87.9	\$0.71	82.8	94.0	110.7
1993	1993	\$3.25	131.4	\$27.74	119.7	\$16.75	125.4	121.3	\$212.43	97.7	\$0.37	90.1	\$0.79	93.0	95.3	114.7
1994	1994	\$3.56	144.2	\$28.40	122.6	\$18.78	140.6	124.4	\$219.94	101.2	\$0.37	89.7	\$0.67	78.8	94.4	118.8
1995	1995	\$3.41	138.1	\$30.25	130.5	\$17.82	133.4	130.8	\$211.29	97.2	\$0.39	94.0	\$0.90	105.5	98.3	122.3
1996	1996	\$4.46	180.5	\$32.73	141.3	\$19.22	143.9	141.5	\$265.98	122.4	\$0.43	105.1	\$1.09	128.5	120.2	141.7
1997	1997	\$4.24	171.7	\$32.92	142.1	\$21.39	160.1	143.9	\$246.29	113.3	\$0.45	110.8	\$1.01	117.9	113.8	139.6
1998	1998	\$4.89	198.0	\$35.72	154.2	\$26.54	198.7	158.7	\$283.01	130.2	\$0.50	122.0	(\$1.00)	-1.0	128.2	158.1
1999	1999	\$4.94	199.8	\$35.23	152.0	\$22.78	170.5	153.9	\$310.56	142.9	\$0.54	132.0	\$1.41	165.3	145.3	159.2
2000	2000	\$5.25	212.6	\$40.02	173.0	\$20.56	153.9	170.8	\$346.82	159.6	\$0.47	115.2	\$1.18	138.8	146.8	170.7
2001	2001	\$4.19	169.5	\$38.67	167.4	\$17.45	130.6	163.2	\$303.22	139.5	\$0.50	120.9	\$1.29	151.5	138.4	156.8
2002	2002	\$3.74	151.2	\$37.99	164.7	\$24.81	185.7	166.2	\$285.35	131.3	\$0.50	121.3	\$0.78	91.9	121.4	150.1
2003	2003	\$4.42	178.9	\$38.23	165.7	\$20.91	156.6	164.1	\$289.44	133.2	\$0.55	133.4	\$0.72	84.7	123.4	154.4
2004	04Q3	\$4.38	177.1	\$43.33	188.0	\$27.59	206.5	189.0	\$350.71	161.4	\$0.91	221.3	\$2.70	316.3	204.4	191.6
2005	05AV	\$12.90	522.0	\$44.17	191.8	\$30.69	229.8	194.7	\$508.77	234.1	\$0.96	232.9	\$1.01	118.4	210.4	255.2
2006	06AV	\$7.54	305.1	\$59.61	258.4	\$33.79	253.0	256.8	\$430.27	198.0	\$0.92	223.5	\$2.62	306.9	225.1	255.5
2007	07Q3	\$10.32	417.6	\$81.60	352.9	\$28.59	214.0	338.0	\$588.03	270.6	\$1.06	258.9	\$2.00	234.4	261.0	328.3
2007	07Q4	\$17.76	719.0	\$103.64	448.2	\$98.13	734.6	476.8	\$563.39	259.3	\$1.02	249.2	\$5.90	691.1	345.1	478.4
2007	07AV	\$7.18	290.5	\$66.58	287.9	\$37.76	282.7	286.9	\$546.29	251.4	\$1.01	245.7	\$1.40	163.6	232.4	271.1
2008	08AV	\$9.04	365.7	\$69.72	302.2	\$29.93	224.1	293.0	\$467.51	215.1	\$1.05	255.8	\$1.65	193.6	218.6	283.0
2009	09Q1	\$5.87	237.5	\$67.74	292.9	\$78.51	587.7	322.7	\$425.40	195.8	\$0.85	207.2	\$1.55	181.7	195.1	269.8
2009	09Q2	\$7.91	320.1	\$65.25	282.2	\$37.17	278.3	281.3	\$379.98	174.9	\$0.70	169.7	\$3.46	405.9	220.8	269.7
2009	09Q3	\$6.11	247.5	\$62.94	272.0	\$31.44	235.4	267.9	\$450.29	207.2	\$0.90	218.9	\$1.77	207.8	209.6	246.8
2009	09Q4	\$6.13	248.1	\$77.79	336.4	\$38.79	290.4	331.1	\$352.16	162.1	\$0.54	132.7	\$3.50	410.2	206.8	279.5
2009	09AV	\$6.63	268.3	\$66.49	287.5	\$44.12	330.2	291.4	\$399.34	183.8	\$0.75	183.8	\$1.58	185.5	184.1	255.1
2010	10Q3	\$9.30	376.3	\$59.49	257.1	\$48.22	361.0	267.4	\$428.29	197.1	\$0.91	222.9	\$0.00	0.0	203.3	270.8
2010	10Q4	\$8.52	344.7	\$64.69	279.6	\$32.63	244.3	275.6	\$395.91	182.2	\$0.76	186.3	\$0.00	0.0	183.2	264.5
2010	Q1AV	\$7.86	318.3	\$61.92	267.9	\$29.19	218.5	262.2	\$430.84	198.3	\$0.78	190.6	\$2.27	266.4	210.6	256.2
2011	11Q1	\$7.17	290.4	\$69.28	300.9	\$28.75	215.2	290.4	\$365.40	168.2	\$0.76	186.5	\$1.55	181.7	174.4	255.4
2011	11Q2	\$7.37	298.2	\$69.89	302.2	\$41.46	310.3	302.5	\$419.00	192.8	\$0.83	203.2	\$0.00	0.0	195.3	274.3
2011	11Q3	\$9.51	385.0	\$78.57	340.0	\$27.00	202.1	325.0	\$408.18	187.8	\$0.93	226.6	\$0.00	0.0	197.2	303.2

[View Annual/Qtr Graphs](#)

[View Tabular Report](#)

## Colorado Construction Cost Index



Comments:

This Colorado Construction Cost Index is composed of six indicator items and based on bid prices relative to the unit prices of 1987 (unit index=100). The Index varies due to type and location of projects in addition to overall economic conditions.

Earthwork (Excavation and Embankment):

The average price was \$9.51 a cu. yd. which is up \$2.14 from the previous quarter.

Hot Mix Asphalt:

The average price was \$78.57 a ton which is up \$8.68 from the previous quarter.

Concrete Pavement:

The average price was \$27.00 a sq. yd. which is down \$14.46 per sq. yd. from the previous quarter.

Structural Steel:

Insignificant amount was bid on items in this category.

Structural Concrete:

The average price was \$408.00 a cu. yd. which is up \$10.8 from the previous quarter.

Reinforcing Steel:

The average price was \$.093 a lb. which is up \$.10 from the previous quarter.