

PRE-APPROVED PRODUCT EVALUATION REQUEST & SUMMARY

Product Evaluation Coordinator
 Colorado Department of Transportation
 4670 North Holly Street, Unit A
 Denver, Colorado 80216

Material code:

Material code description full name:

FOR INTERNAL CDOT USE**PART 1**

Product name:	Product category:
Product Representative (name & address): Attn:	Manufacturer (name & address): Attn:
Phone: E-mail:	Phone: E-mail:
Web-site address:	Web-site address:

Description of the product: (Include specific quantifiable details from tech data sheet. Advertising generalities are not appropriate.)**Restrictions,** (installation and/or use):**Use of the product,** (be specific to CDOT highway activities only):**Benefits to CDOT,** (how will your product enhance quality, improve safety, save money, be a better value than other manufacturer's products):**Specifications:** (listing those applicable is required)

- ☐ CDOT :
☐ ASTM :
☐ AASHTO :
☐ FHWA :
☐ other :

☐ Certificate of Compliance (COC) provided

Certificate of Verification (COV) provided for select categories ONLY

Product Testing: (National/independent laboratories or universities with Report Date.) **Certified Test Report (CTR)** provided to validate all claims.

- ☐ NTPEP-AASHTO:
☐ FHWA :
☐ other :
☐ other :
☐ other :

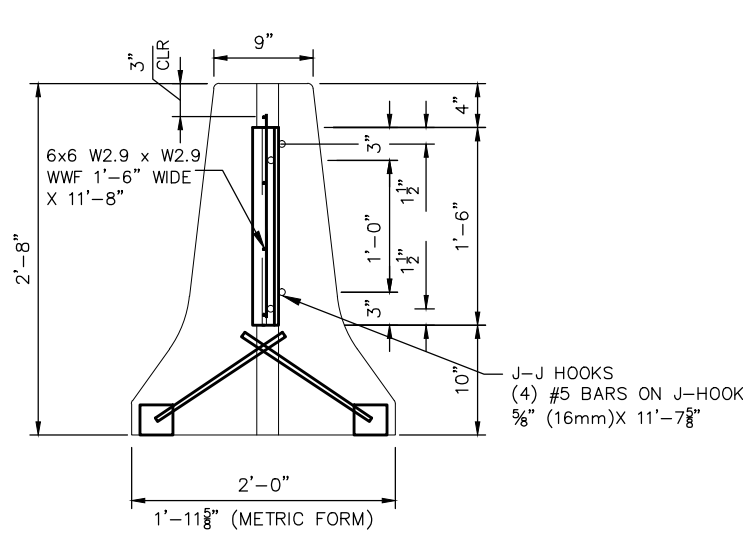
State DOT Approvals, (current documentation required):

Expiration Date

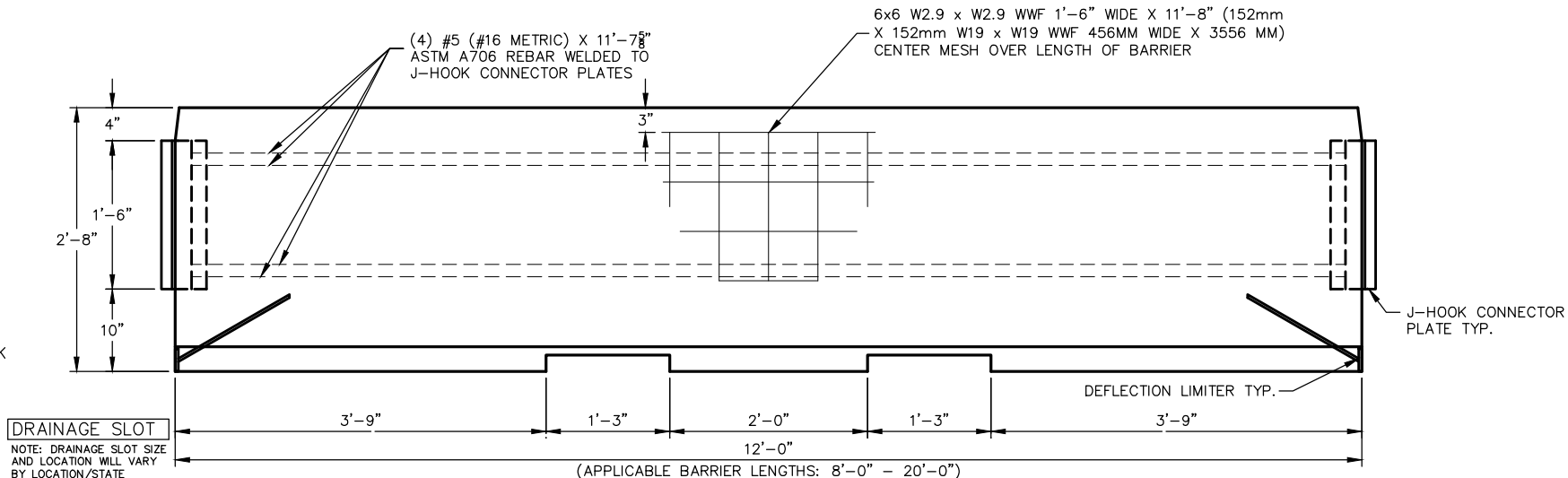
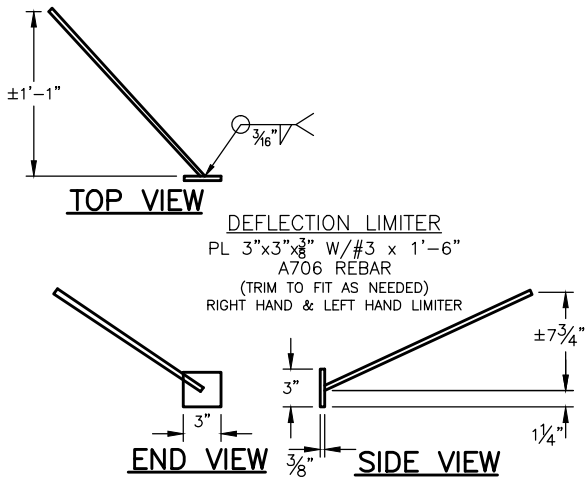
Sample submitted: ☐ yes ☐ no ☐ n/aSafety Data Sheets (SDS): ☐ yes ☐ no ☐ n/a

Alternate Product Category:

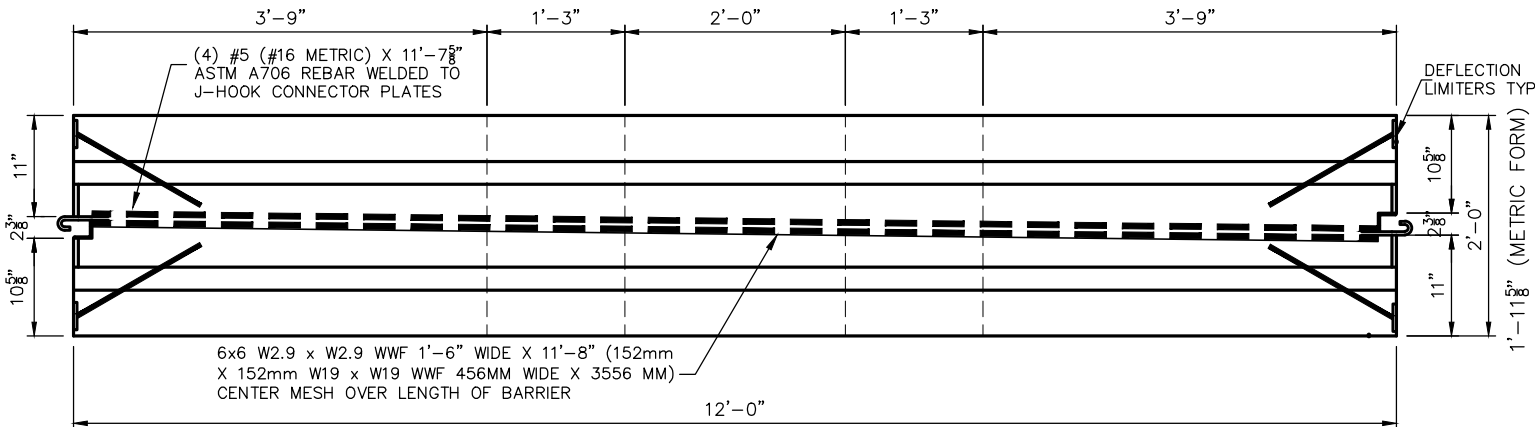
Additional Comments:



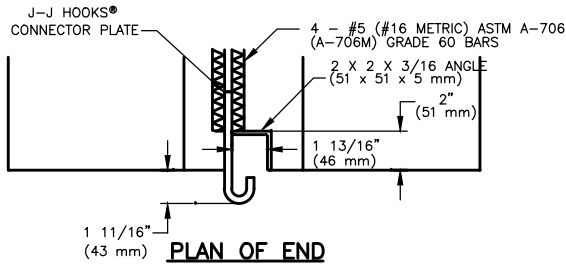
END (REINFORCING)



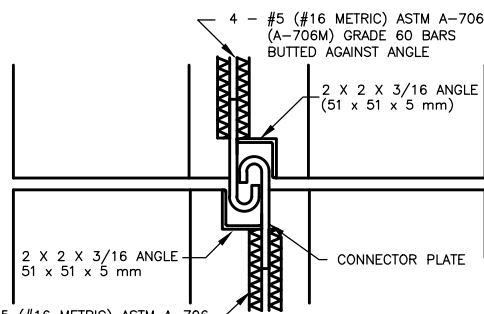
ELEVATION



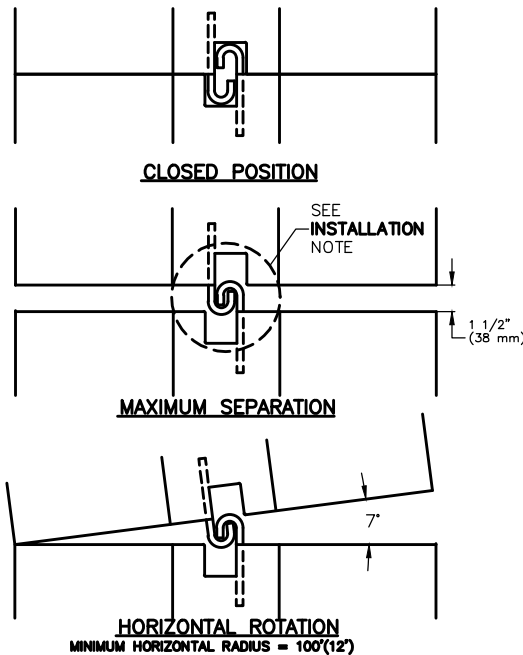
PLAN VIEW



PLAN OF END



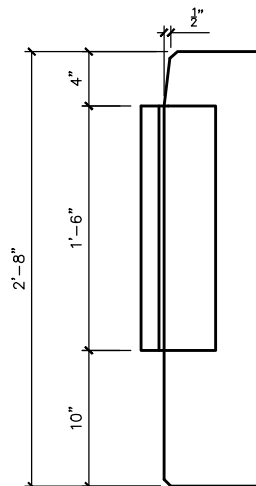
POSITIVE CONNECTOR



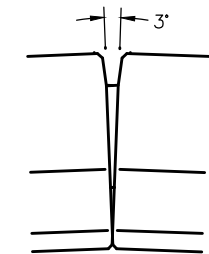
CLOSED POSITION

MAXIMUM SEPARATION

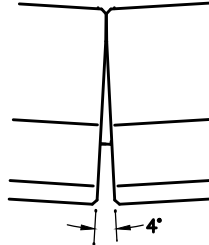
HORIZONTAL ROTATION
MINIMUM HORIZONTAL RADIUS = 100'(12')



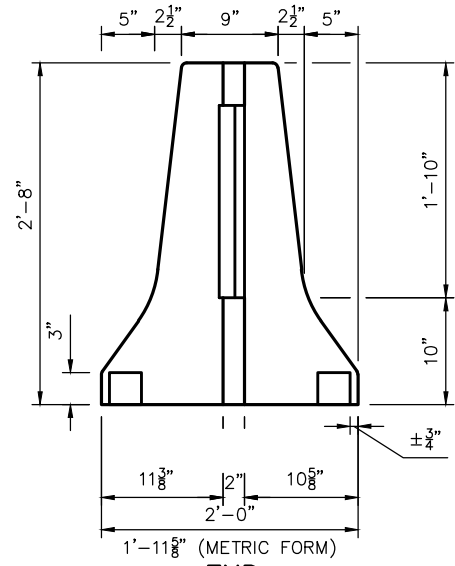
ELEVATION AT END



VERTICAL ROTATION
MINIMUM VERTICAL CURVE
RADIUS = 248' [76 m]



VERTICAL ROTATION
MINIMUM VERTICAL



END

GENERAL NOTES AND SPECIFICATIONS:

MATERIALS:

CONCRETE: CLASS AA CONCRETE 4000 PSI (34 MPa) MINIMUM COMPRESSIVE STRENGTH IN 28 DAYS.

REINFORCING:

WELDED WIRE REINFORCEMENT: ASTM A185 GR. 65

REBAR: ASTM A-706 (A-706M) GRADE 60 OR DUAL CERTIFIED MEETING ASTM A615 GR. 60 & ASTM A706 GR. 60 REBAR (REBAR WELDED TO STEEL).

ASTM A615 GR. 60.

ALL REINFORCING STEEL WILL BE GRADE 60, UNLESS OTHERWISE SPECIFIED.

ALL WELDED REBAR IS ASTM A706 OR DUAL CERTIFIED. PRODUCERS OPTION TO USE LIFTING DEVICES, CHAIRS, SPACERS, OR MISCELLANEOUS REBAR TO SECURE CAGE IN FORM & HANDLING AS NEEDED.

STEEL: ASTM A-36 (A-36M) MINIMUM (PLAIN/ MILL FINISH).

OPTIONAL - GALVANIZED J-J HOOKS AS REQUIRED

WELDING: AWS D1.1 STRUCTURAL WELDING CODE-STEEL

AWS D1.4 STRUCTURAL WELDING CODE-REINFORCING STEEL

TOLERANCES:

CONNECTOR LOCATION +/- 1/16" (1.6MM)

CONNECTOR PLATE SIZE + 1/8" (3.2MM)

BARRIER LENGTH + 1/4" (6.4MM)

MIN 1 1/4" STEEL COVER

DESIGN: MASH TL-3

J-J HOOKS IS A CRASH TESTED AND OPERATIONAL DESIGN FOR USE ON ALL FEDERAL-AID HIGHWAY PROJECTS.

APPLICABLE SHAPES: F SHAPE, JERSEY SHAPE AND CONSTANT SLOPE.

APPLICABLE BARRIER LENGTHS: 8'-0" TO 20'-0" (2438 MM TO 6096 MM)

REBAR LENGTHS SHOWN WILL VARY DEPENDING ON OVERALL BARRIER LENGTH

DRAINAGE SLOTS WILL VARY IN SIZE AND LOCATION DEPENDING ON STATE DOT STANDARDS

BARRIER MARKING: AS REQUIRED BY STATE DOT STANDARDS (E.G. MANUFACTURERS ID, DATE OF MANUFACTURE, TESTING LEVEL, ETC.)

INSTALLATION: REMOVE SLACK IN HOOK ENGAGEMENT (PERMISSIBLE TOLERANCE OF +0", -5/8")

A TRANSITION PIECE BETWEEN A J-J HOOK BARRIER AND ANOTHER SUCCESSFULLY TESTED CONNECTION IS ACCEPTABLE.

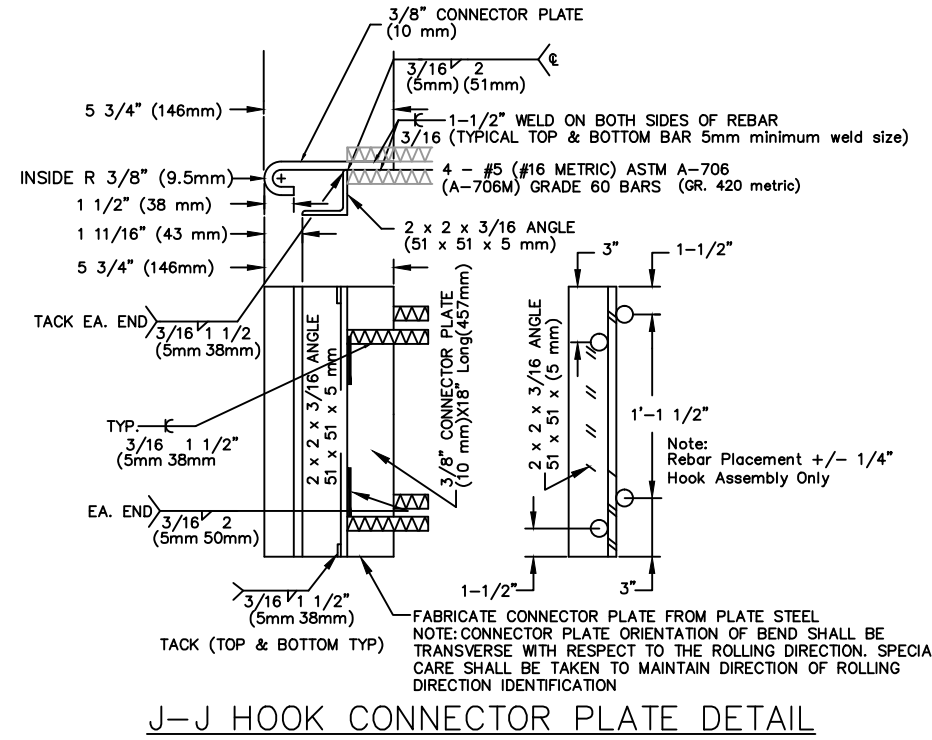
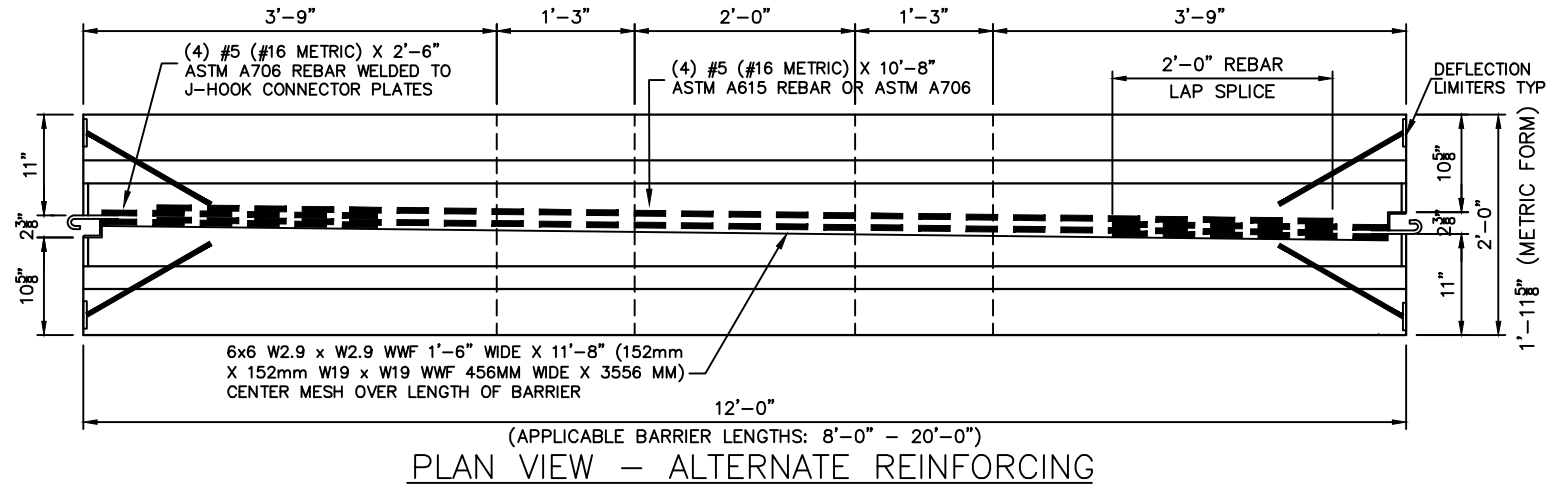
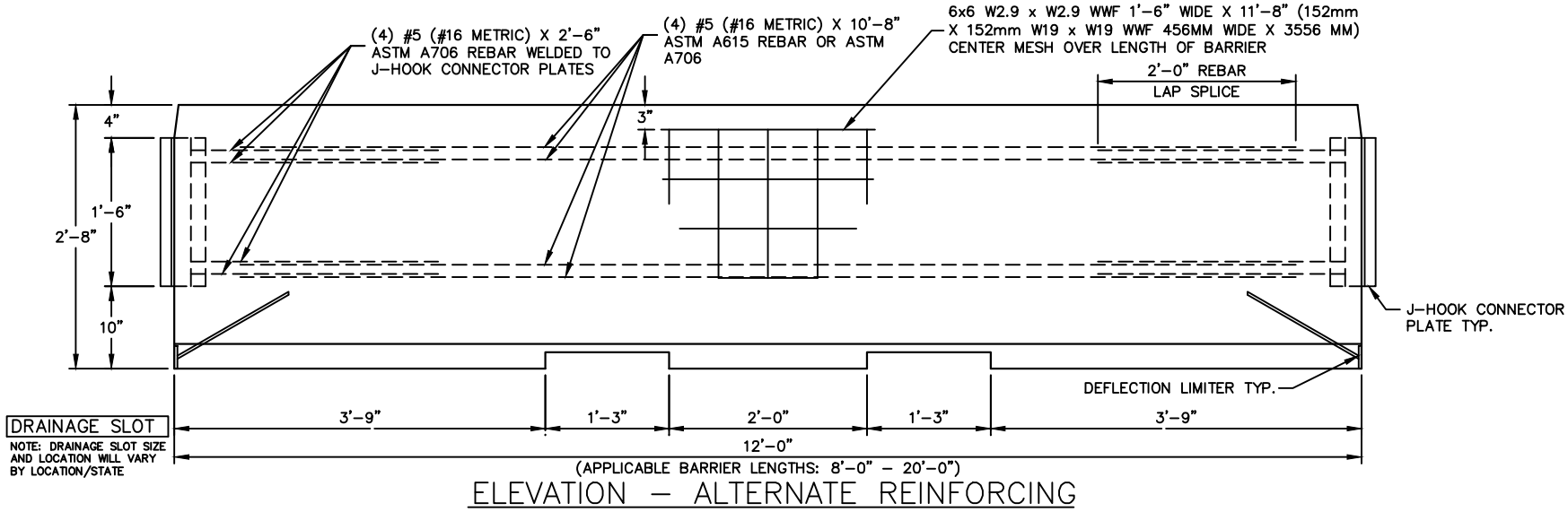
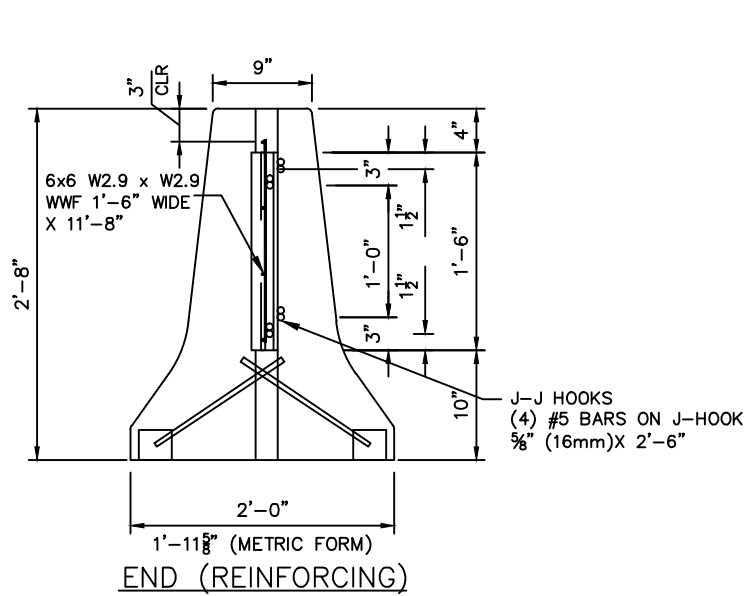
NOTICE: THIS PRODUCT CONTAINS PROPRIETARY FEATURES WHICH ARE PROTECTED BY ONE OR MORE U.S. PATENTS

DEFLECTIONS:

- STATIC DEFLECTION= 63.0"
- DYNAMIC DEFLECTION= 64.2"

QTY	MATERIALS LIST	(2) LEFT HAND
4	DEFLECTION LIMITERS PER BARRIER	(2) RIGHT HAND
2	J-HOOK CONNECTOR PLATES (WITH FULL LENGTH REBAR WELDED TO EACH)	
CONCRETE CY: 1.34		
WEIGHT: 5,450 LBS	1 WWF W2.9XW2.9 6X6 1'-6" X 11'-8"	

EASI SET® WORLDWIDE			
5115 Catlett Rd. • Midland, VA 22728 • info@EasiSet.com			
www.EasiSet.com • 800-547-4045 • Fax 540-435-2541			
APPROVED PLANT			
MANUFACTURER			
J-J HOOKS F-SHAPE FREESTANDING TEMPORARY CONC. BARRIER (MASH)			Ref. No. MBF-MASH
DWG No. -			Last Rev. -
JOB No. -			-
3	DRAWN BY: WCR	DATE: 11.01.16	SHEET
2	CHECKED BY: MT	DATE: 11.01.16	
1	APPROVED BY: AXM	DATE: 11.01.16	



QTY	MATERIALS LIST	(2) LEFT HAND
4	DEFLECTION LIMITERS PER BARRIER	(2) RIGHT HAND
2	J-HOOK CONNECTOR PLATES (WITH 2'-6" REBAR WELDED TO EACH)	
1	WWF W2.9XW2.9 6X6 1'-6" X 11'-8"	
4	#5 REBAR X 10'-8" LG	
CONCRETE CY:	1.34	
WEIGHT:	5,450 LBS	

REVISIONS				EASI-SET® WORLDWIDE			
11				5115 Catlett Rd. • Midland, VA 22728 • info@EasiSet.com			
10				www.EasiSet.com • 800-547-4045 • Fax 540-439-2641			
9				APPROVED PLANT			
8				MANUFACTURER			
7				J-J HOOKS F-SHAPE FREESTANDING	Ref. No.		
6				TEMPORARY CONC. BARRIER (MASH)	MBF-MASH		
5					Last Rev.		
4				DWG No. -	JOB No. --		
3				DRAWN BY: WCR	DATE: 11.01.16		SHEET
2				CHECKED BY: MT	DATE: 11.01.16		
1				APPROVED BY: AXM	DATE: 11.01.16		2/2