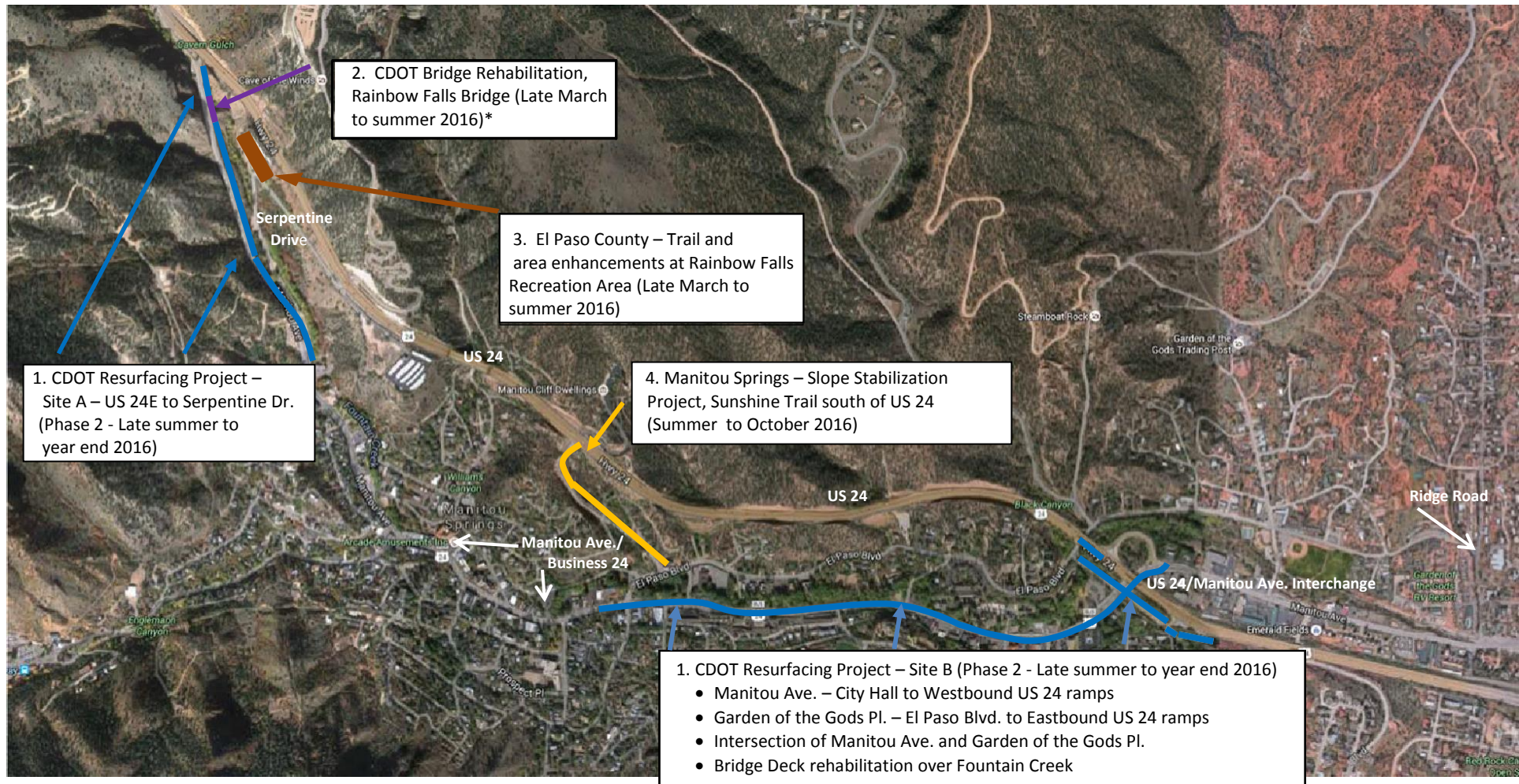


Summer 2016 Reconstruction Projects Surrounding US 24 Ute Pass (Phase 1)

For more information: CDOT 719-488-5908, El Paso County 719-520-6540, and City of Manitou Springs 719-685-2594



1. CDOT Resurfacing Project – Site A – US 24E to Serpentine Dr. (Phase 2 - Late summer to year end 2016)

2. CDOT Bridge Rehabilitation, Rainbow Falls Bridge (Late March to summer 2016)*

3. El Paso County – Trail and area enhancements at Rainbow Falls Recreation Area (Late March to summer 2016)

4. Manitou Springs – Slope Stabilization Project, Sunshine Trail south of US 24 (Summer to October 2016)

1. CDOT Resurfacing Project – Site B (Phase 2 - Late summer to year end 2016)

- Manitou Ave. – City Hall to Westbound US 24 ramps
- Garden of the Gods Pl. – El Paso Blvd. to Eastbound US 24 ramps
- Intersection of Manitou Ave. and Garden of the Gods Pl.
- Bridge Deck rehabilitation over Fountain Creek

The following reconstruction projects are scheduled to take place surrounding US 24 Ute Pass throughout summer 2016. All involved jurisdictions are collaborating on construction schedules to minimize inconvenience to the traveling public, to the extent possible. (Phase 2 projects are scheduled for Late 2016)

- CDOT – Site A:** Resurfacing Project – US 24E to Serpentine Dr. (Phase 2 - Late summer to year end 2016)
CDOT – Site B: Resurfacing Project – Four locations (Phase 2 - Late summer to year end 2016)
- CDOT Bridge Rehabilitation Project:** Rainbow Falls Bridge (Late March to summer 2016)*
- El Paso County:** FEMA rehabilitation project – trail repairs (March – May 2016)
El Paso County: Transportation Enhancement Grant – Parking lot, trail and other facility enhancements (summer 2016 – Completion: TBD)
- City of Manitou Springs:** Slope Stabilization Sunshine Trail south of US 24 (summer – October 2016)
- El Paso County:** Hazard Mitigation Project - Open space creation from Voluntary Acquisition and Demolition of 3 properties (not noted on map, further up US 24 west)
FEMA/Community Development Block Grant – Disaster Recovery (2nd Quarter, 2016)
- CDOT I-25/Cimarron Interchange Design-Build Reconstruction Project** (not noted on map): Construction at the I-25 Interchange and US 24/Cimarron Street continues through Winter 2017

*Drivers wanting to access Manitou Springs from US 24 will temporarily need to use Serpentine Dr., Washington Ave., or preferably, the US 24/Manitou Ave. Interchange (best route for large trucks and tour busses).