

Bridge and Tunnel Enterprise Q4 FY2025 Report



COLORADO
Department of Transportation
Statewide Bridge and Tunnel Enterprise

#57

Introduction	4
Program Highlights	5
BTE Plan of Finance	5
I-70 Floyd Hill	5
Eastern Plains Timber Bridge Replacement Program	6
Program Performance Summary	7
Q3 FY2025 BTE Eligible Poor-rated Bridge Statistics	8
Active Project Portfolio	9
Program Controls	9
Bridge Prioritization Plan	10
New Bridge and Tunnel Enterprise Assets	10
BTE Funded Project Status Updates	11
Holyoke Bridge Bundle - US 6 and US 385 Bridge Replacements	11
I-25 and US 50 B Interchange Reconstruction Project - Part of the I-25-Through New Pueblo Freeway:	
Advancing Transportation Safety Project	11
I-70 Vail Pass Safety and Operations Improvement Project	12
I-270 Critical Bridges Project	12
Eisenhower Johnson Memorial Tunnels Maintenance and Repairs	13
Budget and Encumbrances	14
Financial Information	15
Appendices	18
Appendix A - Active Project Portfolio	18
Appendix B - Bridge Prioritization Plan	19
Appendix C - Program Allocation Plan	24
Appendix D - Four Year Quarterly Cash Flow Graph	30

- Image 1. Night Work on Floyd Hill
- Image 2. US 36 ML over Draw
- Image 3. I-70 Service Road over Draw
- Image 4. US 40 ML over Draw
- Image 5. US 6 ML over UPRR, Beaver Canal
- Image 6. SH 61 ML over Surveyor Creek
- Image 7. US 34 ML over Draw
- Image 8. SH 9 over UPRR
- Image 9. US 160 over Florida River
- Image 10. BTE Active Project Portfolio
- Image 11. Map of the Holyoke Bridge Locations
- Image 12. Construction on the New Pueblo Freeway Project
- Image 13. Deck Work for the New I-70 EBND Structure
- Image 14. Repairs on I-270
- Image 15. EJMT Tunnel
- Image 16. Ice Build -up on the EJMT Liner
- Image 17. Repairs on the EJMT Lighting
- Image 18. Rutting in the Asphalt of EJMT

- Table 1. BTE Eligible Structures Replaced in the Eastern Plains Bridge Replacement Program
- Table 2. Structures with Design Funding Approved in Q4 FY2025
- Table 3. Structures with Construction Funding Approved in Q4 FY2025
- Table 4. Project Status of BTE Eligible Poor-rated Bridges
- Table 5. Active Project SPI by Month
- Table 6. Newly Poor Rated Bridges
- Table 7. New Bridge and Tunnel Enterprise Assets
- Table 8. Projects Substantially Complete Over Six Months Aging Encumbrance and Budget Balances
- Table 9. Program Financial Statistics as of June 30, 2025 (\$ in Millions)
- Table 10. Current Allocation Plan as of June 30, 2025 (\$ in Millions)

- Figure A. BTE Funded 10-Year Plan Progress Update
- Figure B. Current Status of BTE Eligible Poor-rated Bridges
- Figure C. Historic Status of BTE Eligible Poor-rated Bridges
- Figure D. Completed Poor-rated Bridge Projects - Count & Sq. Ft. By Year
- Figure E. Forecast vs Actual FASTER Revenue Comparison
- Figure F. Forecast vs Actual SB21-260 Fee Revenue Comparison
- Figure G. Statewide Bridge & Tunnel Enterprise Program Performance
- Figure H. Statewide Bridge & Tunnel Enterprise Program Performance IRB

This report is the 57th Quarterly Report published in support of the Statewide Bridge and Tunnel Enterprise (BTE). This Report outlines the progress and accomplishments associated with the BTE Program for work completed during April, May and June of 2025; which coincides with the fourth quarter of the Colorado Department of Transportation's (CDOT) 2025 Fiscal Year (Q4 FY2025). Detailed information regarding the Funding Advancement for Surface Transportation and Economic Recovery (FASTER) legislation, Sustainability of the Transportation System (SB21-260) legislation, HB23-1276: Scope of Bridge and Tunnel Enterprise legislation, program developments and activities, bond programs, previous significant milestones and achievements can be found in the Program Annual Newsletters and Quarterly Reports and are viewable on the Bridge and Tunnel Enterprise page on CDOT's website at <https://www.codot.gov/programs/BridgeEnterprise>, or by request (email: cdot_bteadmin@state.co.us).

- Supported CDOT with the ongoing delivery of the CDOT 10-Year Plan and continued the evaluation of strategies to leverage BTE financing to advance planned projects with BTE eligible scope items:
 - BTE executed the Colorado Bridge and Tunnel Enterprise Senior Infrastructure Revenue Bond (IRB), Series 2025A transaction, which generated a \$225 million project fund.
 - BTE budgeted \$225 million in Series 2025A transaction proceeds to Floyd Hill Construction Package #4.
 - Staff continued planning efforts for the issuance of new money revenue bonds in 2026 for BTE's calendar year 2026 and 2027 projects.
- Amended the Fiscal Year (FY) 2025-26 BTE budget to reflect the passage of Senate Bill (SB) 25-320, which is forecasted to increase Bridge and Tunnel Impact Fee revenue collections by \$13,971,690 and new debt service obligations for the Series 2025A IRB transaction.
- Drafted and finalized the 56th Bridge and Tunnel Enterprise Quarterly Report (Q3 FY2025).
- Received Board approval for the 6th Budget Supplement of FY2025 to:
 - Establish the design phase for SH 9 over UPRR (D-11-N) in Grand County.
- Received Board approval for the 7th Budget Supplement of FY2025 to:
 - Establish the construction phase for the I-70 East Bridge Rehabilitation Project (F-20-BA & F-20-BB) in Arapahoe County.
- Received Board approval for the 8th Budget Supplement of FY2025 to:
 - Establish the construction phase for the Eisenhower Johnson Memorial Tunnels Right Lane Overlay Paving Project (F-13-X & F-13-Y) in Clear Creek County.
 - Establish the construction phase for US 6 over Elk Creek (F-06-A) in Garfield County.
 - Establish the design phase for US 160 Elmore's Corner Project (P-05-B) in La Plata County.
- Approved a resolution to formally acknowledge four BTE funded structures as assets of the Bridge and Tunnel Enterprise and the transfer of three assets, in conjunction with their rehabilitation, to the Bridge and Tunnel Enterprise.
- Drafted, finalized, and distributed the Q1 FY2026 BTE Bridge Prioritization Plan based on the updated Staff Bridge Poor List (advanced to the Q4 FY2025 report for expedited distribution).
 - Conducted statewide regional outreach to collect information needed to update the BTE Bridge Prioritization Plan and identify safety critical bridges.
- Performed maintenance on the program baseline cost estimates, including monitoring and planning for increased commodity, material, and labor price inflation, and adjusting program forecasts as necessary.
- Performed status updates for various program metrics including: major achievements, total program financial performance, and status of BTE eligible structures.
- Completed monthly updates to the program schedule for work completed in April, May, and June of 2025, and conducted the regularly scheduled Schedule Change Control Board meetings.
- Continued efforts to de-budget excess funds on projects with completed phases and reallocate savings to other BTE projects.

BTE Plan of Finance

The successful issuance of the second tranche of the Enterprise’s Senior Infrastructure Revenue Bonds (“IRBs”) in Q4 FY2025 generated a \$225 million project fund to support CDOT with the funding and delivery of the 10-Year Plan, specifically I-70 Floyd Hill Construction Package #4 (see below). These funds, as well as the funds from BTE’s first tranche of IRBs, are fully budgeted to BTE’s capital construction program. BTE IRB issuances to date have generated approximately \$392 million in proceeds and BTE is currently planning for a third and final IRB transaction to eliminate the Enterprise’s current funding gap and facilitate the timely completion of several key strategic projects. To date, over \$80 million of the proceeds have been expended (see Figure H). A high-level progress update for the BTE eligible scope included in the 10-Year Plan is provided below in Figure A.

Figure A. BTE Funded 10-Year Plan Project Progress Update

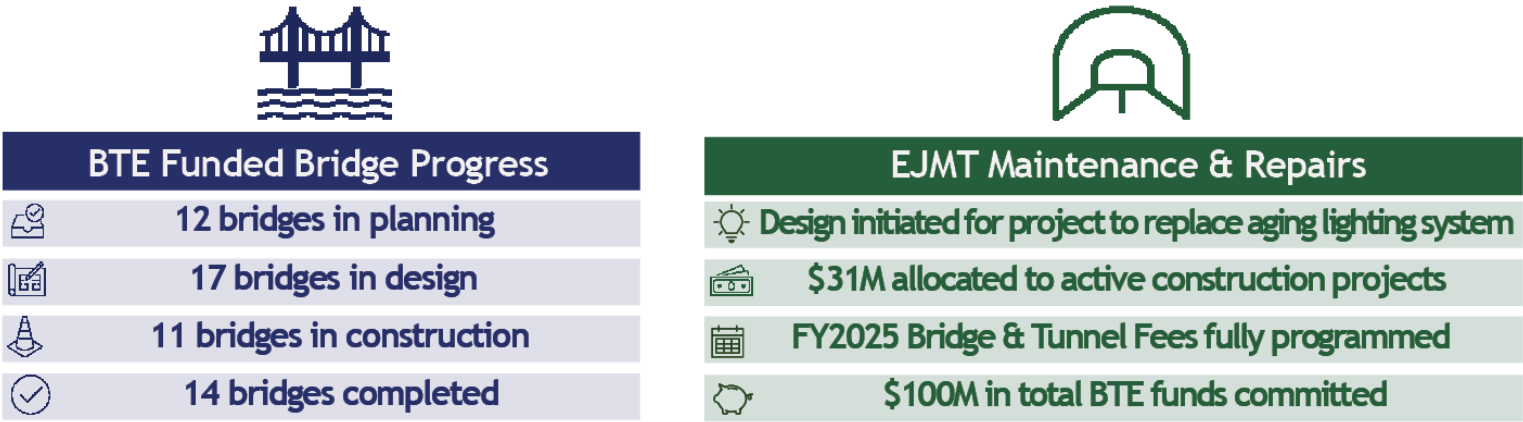


Image 1. Night Work on Floyd Hill

I-70 Floyd Hill

In Q4 FY2025, the I-70 Floyd Hill project achieved a significant milestone when the construction phase for the fourth and final construction package (CP #4) commenced. This achievement was made possible in part by the BTE Board of Directors approval of a construction phase budget supplement for \$240 million to fund the BTE eligible scope included in CP #4 in Q3 FY2025 and the successful execution of the Series 2025A BTE Infrastructure Revenue Bond transaction in May 2025 (see BTE Plan of Finance). To date, the Board has approved a total of approximately \$300 million for this key strategic project, which is now fully funded through innovative financing by BTE and Colorado Transportation Investment Office, CDOT strategic funds, and an Infrastructure for Rebuilding America (INFRA) grant.

The project will rebuild a seven-mile stretch of I-70 from exit 248 northwest of Evergreen to exit 241 in eastern Idaho Springs and will eliminate a bottleneck on one of the most congested stretches of the I-70 Mountain Corridor. BTE is committed to funding the replacement of three eligible structures located within the project limits, including I-70 WBND over Clear Creek and US6 at the base of Floyd Hill (F-15-BL), the US 6 offramp from I-70 WBND (F-15-BM), and the I-70 Frontage Road over Clear Creek (F-15-D). The project scope also contains non-BTE eligible elements including plans for curve flattening and safety improvements, interchange and greenway improvements, wildlife safety mitigation including wildlife crossings and fencing, and an east bound climbing lane for heavy commercial and slow-moving vehicles.

Construction Package #3 (CP #3), which is primarily funded through the Series 2024A BTE Infrastructure Revenue Bond transaction, is progressing on schedule and on budget. The package includes site access scope to prepare for the construction of the BTE eligible bridges. The excavation at the saddle cut where the new viaduct replacing F-15-BL will touch down to the west near Sawmill Gulch has made significant progress. The access road and wall construction at the bottom of Floyd Hill to the east, which are necessary to complete installation of the foundations and substructure units supporting the viaduct, have also been progressing and are nearly complete. Given that CP #4 started construction during this quarter, a more substantive update on the final construction package will be provided in the Q1 FY2026 BTE Quarterly Report.

Eastern Plains Timber Bridge Replacement Program

In Q4 FY2025, the completion of the Eastern Plains Timber Bridge Replacement Program was marked by the completion of the project's fourth and final construction package (CP #4). The greater project addressed seven BTE eligible structures and four non-eligible structures throughout Eastern Colorado in CDOT Regions 4 and 1. These bridges provide critical rural mobility and play a key role in the movement of agricultural and resource products in the State. The project utilized construction manager/general contractor (CM/GC) contracting to bundle the structures into four construction packages based upon geographic proximity, structure type, and risk factors, allowing BTE and CDOT to optimize project delivery, achieve economies of scale, and expedite a project with significant safety benefits for the traveling public.

Table 1. BTE Eligible Structures Replaced in the Eastern Plains Bridge Replacement Program

Old Bridge ID	New Bridge ID	Region	Facility Carried over Featured Intersection	County
F-19-E	F-19-EA	1	US 36 ML over Draw	Arapahoe
F-20-J	F-20-JA	1	US 40 ML over Draw	Arapahoe
F-20-L	F-20-LA	1	I-70 Service Road over Draw	Arapahoe
C-22-K	006J372826BL	4	US 6 ML over UPRR, Platte, Beaver Canal	Morgan
D-24-O	034B198852BL	4	US 34 ML over Draw	Washington
D-25-E	D-25-EA	4	SH 61 ML over Surveyor Creek	Washington
D-28-D	D-28-DA	4	US 34 ML over Republican River	Yuma




Image 2. US 36 ML over Draw



Image 3. I-70 Service Road over Draw




Image 4. US 40 ML over Draw


Package 1
 F-19-E, F-20-J, F-20-L, G-21-A*


Design Status:
100% complete

Construction Status:
100% complete


Package 3
 D-25-E


Design Status:
100% complete

Construction Status:
100% complete


Package 2
 C-22-K, D-24-O, D-24-A_minor*

Design Status:
100% complete

Construction Status:
100% complete


Package 4
 D-28-C*, D-28-D

Design Status:
100% complete

Construction Status:
100% complete

* Indicates non-BTE eligible structures



Image 5. US 6 ML over UPRR, Beaver Canal



Image 6. SH 61 ML over Surveyor Creek



Image 7. US 34 ML over Draw

Program Performance Summary

In Q4 FY2025, staff continued to make progress addressing the state's poor-rated bridge population and completing tunnel projects. A summary of the Enterprise's activities and accomplishments for this period is provided below.

Design funding was approved for the replacement of SH 9 over the UPRR in Grand County to the south of Kremmling and US 160 over the Florida River (P-05-B) in La Plata County as part of the US 160 Elmore's Corner East Project. The US 160 Elmore's Corner East project will correct operational and safety issues that have been identified along US 160 from the intersection of US 160 and SH 172 to the intersection of US 160 and La Plata County Road 225. The BTE Board previously approved Resolution BTE#2022-05-03, committing a maximum of \$10 million in BTE state match funding to the project, which was awarded a \$58,940,000 grant through the Multimodal Project Discretionary Grant (MPDG) program.

Table 2. Structures with Design Funding Approved in Q4 FY2025

Bridge ID	Region	Facility Carried over Featured Intersection	County
D-11-N	3	SH 9 over UPRR	Grand
P-05-B	5	US 160 over Florida River	La Plata



Image 8. SH 9 over UPRR



Image 9. US 160 over Florida River

The Board approved construction funding for the rehabilitation of two poor-rated structures, F-20-BA and F-20-BB on I-70 over the US 40 Frontage Road in Arapahoe County. These bridges are being delivered in conjunction with the rehabilitation of two fair-rated bridges, utilizing Fuels Impact Enterprise funding, on the I-70 east corridor that have been experiencing increasing, continued deterioration. Bundling the two poor-rated structures into this overall project provides an opportunity for BTE to rehabilitate the bridges in a cost effective manner while addressing the growing bridge maintenance needs on this segment of the I-70 corridor. Construction funding was also approved for the US 6 over Elk Creek bridge replacement project and Eisenhower Johnson Memorial Tunnels (EJMT) right lane overlay paving project, a summary of the EJMT paving project can be found later in the BTE Funded Project Status Updates section of this report.

Table 3. Structures with Construction Funding Approved in Q4 FY2025

Bridge ID	Region	Facility Carried over Featured Intersection	County
F-20-BA	1	I-70 EBND over US 40 Frontage Road	Arapahoe
F-20-BB	1	I-70 WBND over US 40 Frontage Road	Arapahoe
F-13-X	1	Eisenhower Memorial Tunnel	Clear Creek/Summit
F-13-Y	1	Johnson Memorial Tunnel	Clear Creek/Summit
F-06-A	3	US 6 ML over Elk Creek	Garfield

Q4 FY2025 BTE Eligible Poor-rated Bridge Statistics

- 5 structures started design (B-07-S, D-11-N, F-20-BA, F-20-BB, & J-04-X)
- 3 structures started construction (F-15-BL, F-15-BM, & F-15-D)
- 1 structure completed construction (D-28-DA)
- 7 structures were added to the BTE program

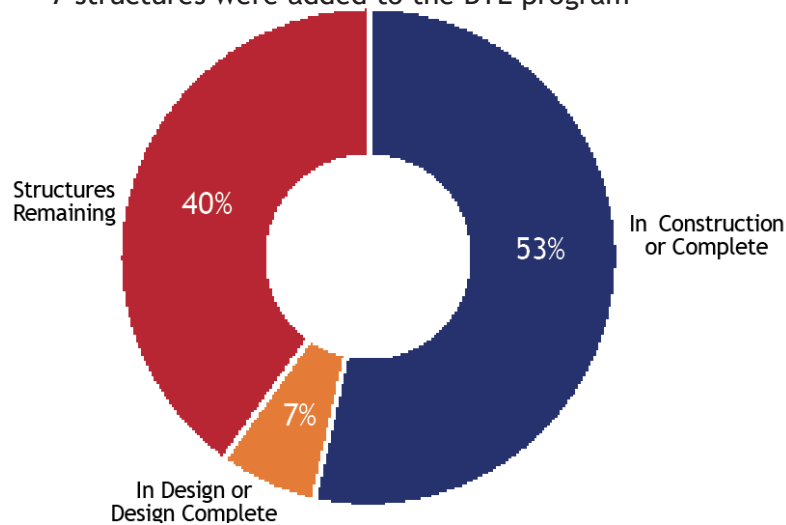
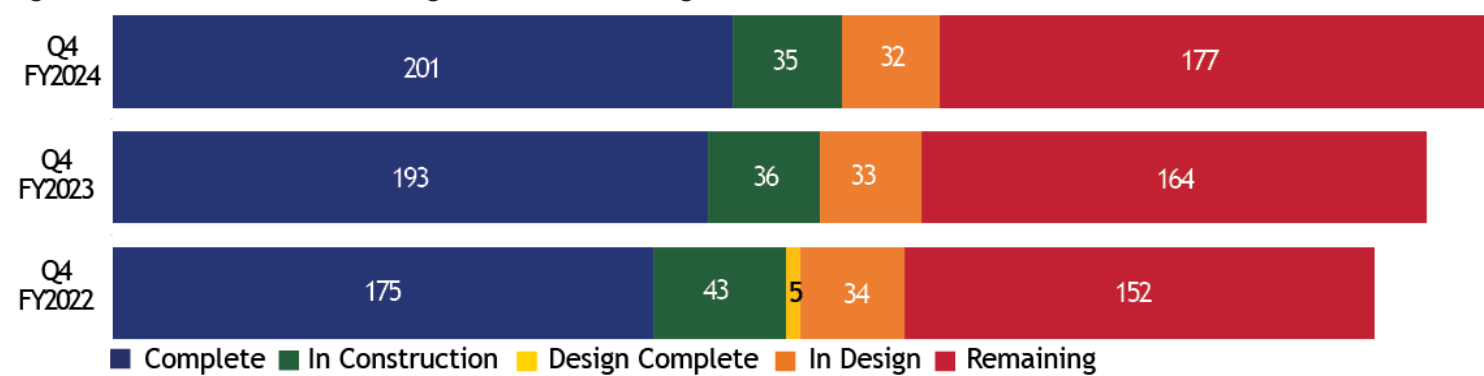


Figure B. Current Status of BTE Eligible Poor-rated Bridges

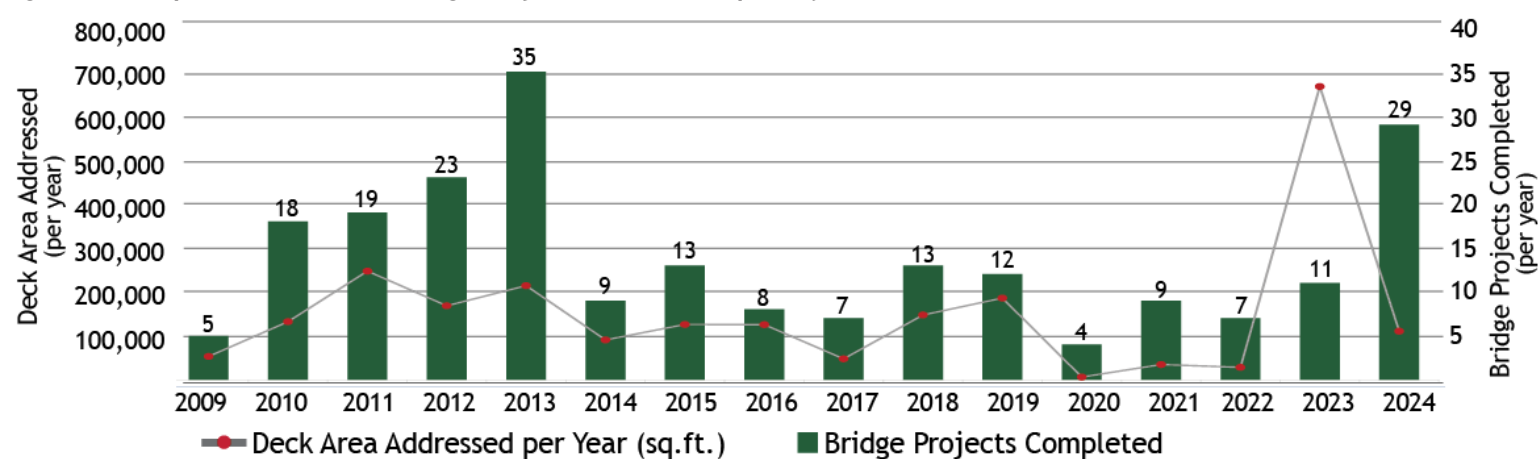


Figure C. Historic Status of BTE Eligible Poor-rated Bridges



✓ 2.4 M square feet of poor-rated bridge deck area has been addressed statewide since program inception

Figure D. Completed Poor-rated Bridge Projects - Count & Sq.Ft. By Year



Active Project Portfolio

The BTE program continues to deliver near historic levels with a robust active project portfolio consisting of 30 bridge projects that will rehabilitate or replace 48 BTE eligible structures and address approximately 543,000 square feet of eligible poor-rated bridge deck area statewide. The map below provides the locations of all active BTE projects¹.

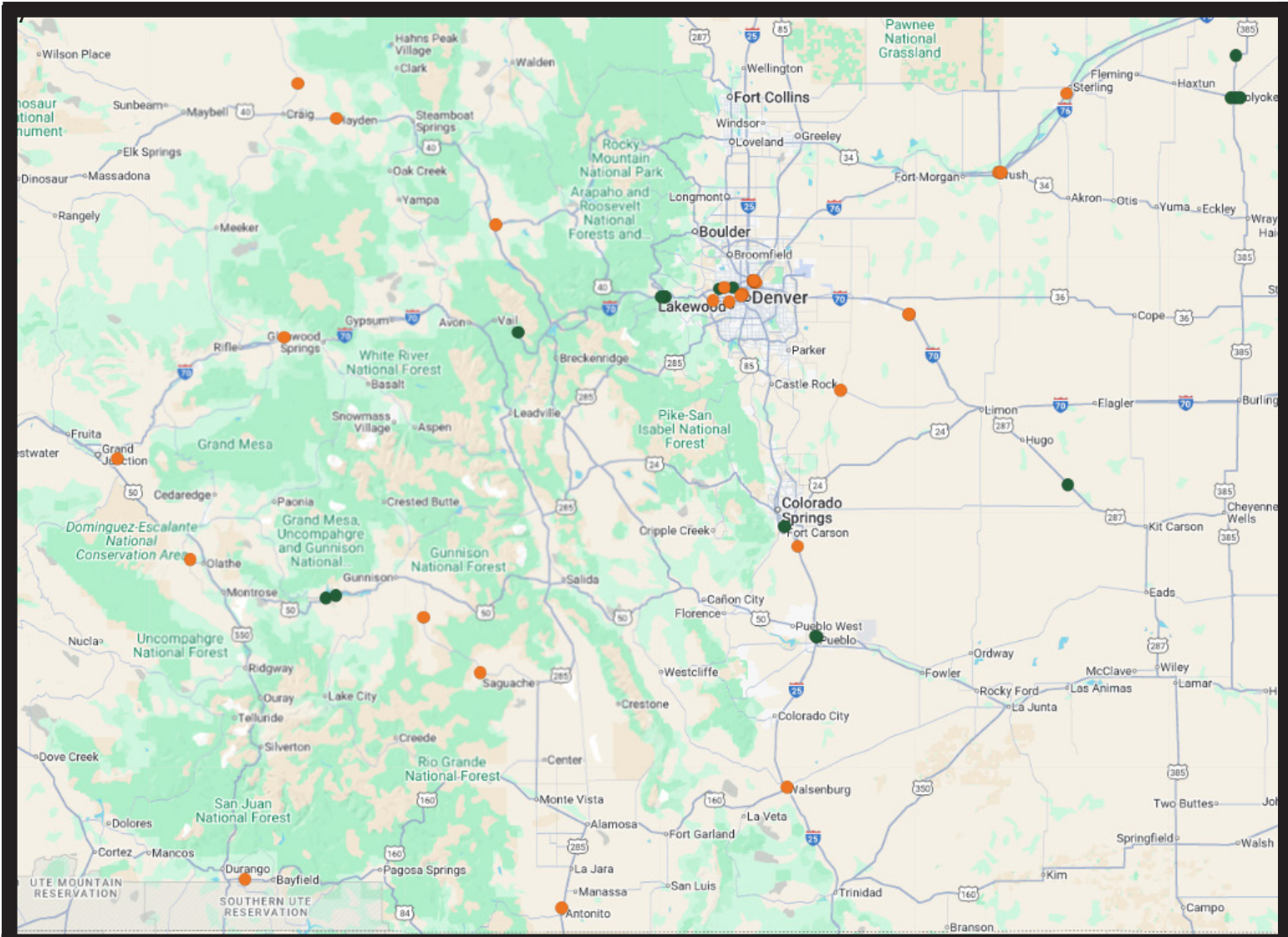


Image 10. BTE Active Project Portfolio

Status: ● In Design ● Design Complete ● In Construction

Program Controls

The active project Schedule Performance Index (SPI) at the end of Q4 FY2025 was 0.98, up from 0.94 at the end of Q3 FY2025. This key performance indicator is used by program staff to monitor projects that have the potential to fall behind their baseline schedule. An active project SPI above 0.90 generally indicates that projects in the program’s project portfolio are being executed efficiently. The program active monthly SPI for Q4 FY2025 is listed to the right.

Table 5. Active Project SPI by Month

Month	Active SPI
April	0.94
May	0.96
June	0.98

🎯 The active project SPI for the BTE Program is 0.98, meets the 0.90 BTE Program goal.

¹ Reference Appendix A for additional information on the active BTE project portfolio

Bridge Prioritization Plan

BTE staff completed the bi-annual update of the (Bridge) Prioritization Plan² in August 2025 based on the updated "poor" list released by CDOT Staff Bridge. This information was advanced to the Q4 FY2025 report for expedited distribution. Pursuant to this update, eight structures fell to poor condition and can be found in Table 6. Note that one structure: F-08-R, was previously poor, rehabilitated to fair condition, and has now fallen poor again. In accordance with Procedural Directive 16.1, and with input from Region staff and Staff Bridge, BTE staff performed a programmatic analysis of all remaining statewide BTE eligible structures in order to produce a tiered list of priority statewide projects.

The BTE project prioritization process was developed to select projects from the statewide eligible bridge pool based on merit, rather than location, with the goal of obtaining the greatest benefit in increased bridge safety from available revenues. Although there is no regional distribution formula dictating the allocation of BTE funds, BTE staff proactively monitor equity at the regional and statewide level and consider equity when making programming decisions for structures of equivalent priority.

Table 6. Newly Poor Rated Bridges

Bridge ID	Region	Facility Carried over Featured Intersection	County
O-18-C	2	I-25 ML over Gonzales Canyon Creek	Las Animas
P-19-AP	2	US 350 ML over Draw	Las Animas
C-12-B	3	SH 125 ML over Willow Creek	Jackson
D-09-Z	3	SH 131 ML over Chimney Rock Creek	Routt
F-08-R*	3	I-70 ML WBND over Colorado River	Eagle
F-10-AA	3	I-70 ML WBND over US 6, RR, Eagle River	Eagle
G-04-A	3	US 6 ML over Colorado River	Mesa
M-01-G	5	US 491 ML over Coal Bed Creek	Dolores

*Indicates previously poor-rated structures that were rehabilitated to fair condition and have now fallen to poor condition again.

New Bridge and Tunnel Enterprise Assets

In Q4 FY2025, the Board approved a resolution to formally acknowledge four BTE funded structures as assets of the Statewide Bridge and Tunnel Enterprise. The resolution also transferred three structures to the Enterprise for major rehabilitation. These structures are tabulated below in Table 7.

Table 7. New Bridge and Tunnel Enterprise Assets

Old Bridge ID	New Bridge ID	Region	Facility Carried over Featured Intersection	County
E-17-GV/GW	E-17-GX	1	I-76 ML over York Street	Adams
F-20-BA	Rehab	1	I-70 ML EBND over US 40 Frontage Road	Arapahoe
F-20-BB	Rehab	1	I-70 ML WBND over US 40 Frontage Road	Arapahoe
H-13-A	H-13-J	2	US 285 ML over Middle Fork S Platte River	Park
N-17-AD	N-17-ADA	2	I-25 ML SBND over US 160, SH 10, RR Spur	Huerfano
D-25-E	D-25-EA	4	SH 61 ML over Surveyor Creek	Washington
J-12-AJ	Rehab	5	US 285 over Draw	Chaffee

² Reference Appendix B for the Bridge Prioritization Plan

Holyoke Bridge Bundle - US 6 and US 385 Bridge Replacements

The US 6 and 385 Bridge Replacement Project addresses four poor rated structures and one fair rated structure near the Town of Holyoke in Eastern Colorado in CDOT Region 4. This project, which is being delivered using design-bid-build, capitalized on the geographic proximity of the five structures to gain efficiencies during design and construction. BTE funded the replacement of the four poor-rated bridges and other CDOT funding sources are being utilized to address the fair-rated bridge. These bridges provide critical rural mobility and play a key role in the movement of agricultural and resource products in the State. Maintenance needs of the bridges have greatly increased in recent years, and the average age of the existing bridges is approaching 80 years.

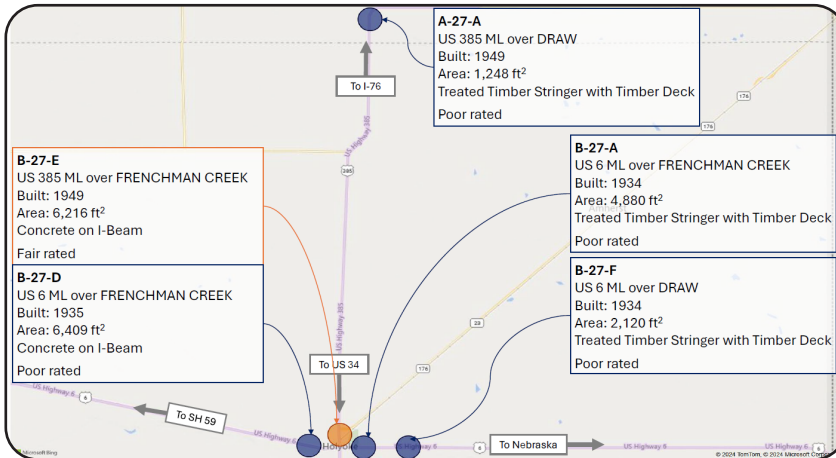


Image 11. Map of the Holyoke Bridge Locations

Project Updates

- Construction of the bridge replacing B-27-D started in spring 2025. Construction activities included detour construction, demolition of the existing bridge, and pile driving for the new bridge foundations.
- Construction of the bridge replacing A-27-A also commenced this spring with detour construction.
- Construction of the B-27-A and B-27-F replacement bridges is scheduled to occur in the 2026 construction season.
- Construction is scheduled to complete in fall 2026.

I-25 and US 50 B Interchange Reconstruction Project

Part of the I-25 Through New Pueblo Freeway: Advancing Transportation Safety Project

The New Pueblo Freeway (NPF) corridor project will bring I-25 through Pueblo up to current Federal Highway Administration (FHWA) standards for interstate highways by addressing geometric deficiencies and provide improved mobility. In November 2011, FHWA and CDOT published the initial Environmental Impact Statement (EIS) for I-25 improvements through Pueblo as part of the NPF. Since that time progress has made improving the interstate through various projects, including the Ilex project, which leveraged BTE funding for the replacement or rehabilitation of eight bridges in Pueblo.

The next phase of the NPF will be the I-25 and US 50B Interchange Reconstruction Project, which will shift US 50 to the north and replace the existing interchange with a modified diverging diamond. This new configuration will improve traffic safety and accommodate oversized trailers that are used to transport items such as locally manufactured wind turbine blades. The BTE eligible component of the project includes the replacement of two BTE eligible structures, US 50 over I-25 (K-18-J) and US 50 over Fountain Creek (K-18-L). Replacing these structures will enhance safety and efficiency for the approximately 30,000 daily users of the bridges and remove two structures with numerous condition, maintenance, and clearance issues from the inventory.



Image 12. Construction on the New Pueblo Freeway Project

Project Updates

- BTE provided \$44 million in funding to the project through the Series 2024A Infrastructure Revenue Bonds.
- Construction of bridge replacing K-18-L started in late 2024 and construction of the bridge foundations and substructure units was completed during this quarter.
- Construction of two bridges replacing K-18-J started construction in spring 2025 with the construction of foundations and substructure units to the east of the current I-25 alignment.
- Construction is scheduled to complete in late 2027.

I-70 Vail Pass Safety and Operations Improvement Project

CDOT/BTE was awarded \$60.7M through the FY2020 USDOT INFRA Discretionary Grant Program to advance the I-70 Vail Pass Safety and Operations Improvement Project. The BTE program was leveraged to improve the competitiveness of the grant applications by increasing the state funding match and showing participation of multiple stakeholders. The project includes: the reconstruction of the BTE eligible westbound and eastbound structures over Polk Creek, construction of an eastbound auxiliary lane, shoulder widening, curve modifications, re-construction of a truck ramp, dynamic message signs, wildlife underpasses and fencing, and a variable speed limit system.



Image 13. Deck Work for the New I-70 EBND Structure

Project Updates

- BTE provided \$108.6 million in funding to the project through a combination of the Series 2024A Infrastructure Revenue Bonds, FASTER bridge safety surcharge revenues, and SB21-260 bridge and tunnel fee revenues.
- Construction Package #3 (CP #3), which included the westbound bridge (F-12-AT), was completed in fall 2024.
- Construction of the eastbound bridge (F-12-AS) in CP #5 started in spring 2024.
- Based on the current project schedule, I-70 eastbound traffic will be switched from the existing bridge to the new bridge in September 2025, allowing demolition of the existing eastbound bridge to commence.

I-270 Critical Bridges Project

The I-270 Critical Bridges project will accelerate the replacement of eight total bridges, six of which are BTE eligible, on the I-270 corridor between York Street and Vasquez Boulevard in advance of the larger I-270 Improvement and Congestion Relief 10-Year Plan project. The bridges have been in service for more than 50 years and are beyond their intended service lives. CDOT and the BTE have placed a high priority on replacing these eight structures on an accelerated timeline due to the increasing frequency and severity of planned and unplanned bridge deck repairs. These deck repairs create disruptions to the traveling public due to the lane closures needed to perform the repairs and are a major safety concern. Since 2006, there have been over 300 documented bridge repairs along this corridor, totaling over \$1 million in repair costs.

Project Updates

- CDOT is advancing the Environmental Impact Statement (EIS) for the larger corridor improvement project, which will serve as the clearance document for I-270 Critical Bridges.
- CM/GC project delivery was approved by the Transportation Commission June 2022.
- A CDOT (non-BTE) construction contract to repair the bridges and keep them operating safely until they are replaced was completed in 2024.
- The BTE Board approved additional design funding in Q3 FY2025 for the six poor-rated bridges to advance design to 60% completion as part of the planned incremental budgeting process.
- Design is scheduled to reach 60% completion in November 2025.

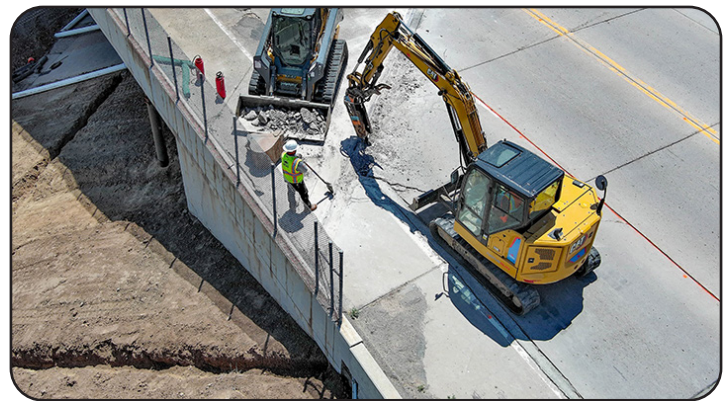


Image 14. Repairs on I-270

Eisenhower Johnson Memorial Tunnels Maintenance and Repairs



Image 15. EJMT Tunnel

The total cost of the projects needed to address the current maintenance and repair backlog at EJMT is estimated at \$150 million. These projects are currently identified in CDOT's 10-Year plan. The passage of Senate Bill 21-260 provided dedicated funds intended to accelerate the highest priority EJMT projects, and in June 2022, the Board committed \$100 million in BTE Funding for these critical projects. Below is an update on the BTE funded projects that are underway.

Plenum Liner Consolidated Grouting Project



Image 16. Ice Build-up on the EJMT Liner

This Plenum Liner Consolidated Grouting Project will make repairs to the plenum liner (a structural liner within the tunnel walls) in both tunnel bores to mitigate water intrusion within the tunnel plenum liner during freeze/thaw cycles. The project aims to reduce water penetration through drilling and injecting grout behind the tunnel liner at multiple select areas throughout the tunnel. Ground water infiltration through the tunnel plenum liner has caused damage to the liner and surrounding utilities, and grout beds supporting the tile lined wall panels. Water infiltration also results in potentially hazardous levels of ice formation on areas of the plenum above traffic. The grouting will "push" water away from the liner, fill voids, and decrease the overall permeability of the interstitial space. This project will decrease engineering and maintenance costs by increasing the longevity and resiliency of EJMT and repairing a defect that has resulted in damage to numerous tunnel elements.

Project Updates

- The construction phase budget for this project was approved by the Board in December 2022.
- Construction started in summer 2023 with the installation of a unique temporary walkway for heavy drilling equipment in the upper plenum of the tunnel.
- Grouting of the tunnel segments on the eastern side of the facility was completed in November of 2024.
- During this quarter, the contractor continued drilling and grouting on the western side of the facility.
- Construction is scheduled to complete in October 2025.

LED Lighting Project



Image 17. Repairs on the EJMT Lighting

In November 2024, funding was approved to initiate the design phase for the EJMT LED Lighting Upgrade project. The project will replace the existing aging lighting system with energy efficient LED lighting fixtures, emergency lighting, and related electrical distribution systems in the tunnels. The project will replace 2,108 fixtures in the Johnson bore and 2,644 light fixtures in the Eisenhower bore that were installed in 2007 and 2003, respectively. The existing lights have a typical life span of 20 years and have been in service for an approximate average of 20 years. Completion of this project will improve safety for the traveling public, decrease maintenance costs, and reduce energy costs.

Project Updates

- The design consultant has been selected.
- Design is scheduled to start in June 2025 and complete in summer 2026.
- Construction is scheduled to start in fall 2026.

Right Lane Overlay Project



Image 18. Rutting of the Asphalt in EJMT

This project will address ruts in the asphalt wearing surface through the removal and replacement of two inches of pavement in the right lane or lane two of the east and westbound tunnel bores. The rutting is primarily caused by chain traction devices on commercial trucks required to chain up during traction law implementation on the I-70 corridor. Sections of the wearing surface were rated poor during the most recent biennial tunnel inspection, which occurred in the summer of 2024. The asphalt wearing surface was last replaced in 2020, however, after four years of heavy traffic, rutting up to 2 inches deep is present throughout the roadway. To keep the tunnel in a safe condition and continue to provide reliable service, this project was expedited by the Enterprise using revenues from the SB21-260 Bridge and Tunnel fees. Construction is scheduled to complete in fall 2025.

Bridge and Tunnel Enterprise staff continues to coordinate with the CDOT Region staff to de-budget projects that are substantially complete in accordance with SB 16-122. Table 8 shows the encumbrance and budget balances as of June 30, 2025, by Region, for projects that have been substantially complete for more than six months. On April 24, 2020, the Chief Engineer and Chief Financial Officer announced guidance regarding project de-budget and closure. This guidance has defined substantial completion as project final acceptance.

Table 8. Projects Substantially Complete Over Six Months Aging Encumbrance and Budget Balances

Region	Encumbrances (\$)	Budget Balances (\$)	Projects	Phases
1	0	0	0	0
2	0	0	0	0
3	116,949	454,988	1	1
4	10,210	80,856	3	3
5	0	0	0	0
Total	127,159	535,844	4	4
% of Total Current Program	0.08%	0.32%	8.9%	6.9%
Previous Quarter (Q3 FY2025)	12,400	11,684	1	1
Difference	114,759	524,160	3	3

There are four projects on the June 30th report. A project from Region 3 has been added to the report, but it is in the process of liquidating remaining encumbrances and is expected to proceed to project closure soon. Two of the three projects from Region 4 are part of a combo project with a larger CDOT project, which is currently under a materials and workmanship warranty. The remaining Region 4 project is awaiting the completion and approval of a Letter of Map Revision (LOMR). Since March 31st, 2025, the encumbrances increased by \$114,759, and the budget balances have increased by \$524,160.

Removed/Closed Out	Additions
None	I-70 Vail Pass Construction Package #3, Prospect Road over I -25 ML, and I-25 ML over Draw

Financial Information

The following is a program overview of financial statistics as of June 30, 2025.

- The program has multiple funding sources, including proceeds from the Series 2024A and Series 2025A Infrastructure Revenue Bonds (IRB), FASTER bridge safety surcharge (revenues collected yearly from vehicle registrations), SB21-260 Bridge and Tunnel Impact and Retail Delivery Fees, other funds which are primarily federal funds, and proceeds from previous financing initiatives.
- From program inception or life-to-date (LTD) through June 30, 2025, a total of approximately \$2,267.7 million has been budgeted (all funding sources), and Expenditures and Encumbrances are \$1,865.4 million and \$69.1 million (all funding sources), respectively. Reference Table 9 below for details by funding source.
- For comparison purposes, the totals from the previous quarterly report (Q3 FY2025) are reported in the far-right column

Table 9. Program Financial Statistics as of June 30, 2025 (\$ in Millions)

Financial Component	IRB Proceeds*	FASTER Bridge	SB21-260	Other Funds	Total Q3 FY2025	Total Q2 FY2025
Budget	\$390.4	\$1,368.6	\$83.9	\$424.8	\$2,267.7	\$2,249.3
Expenditures	\$80.8	\$1,303.2	\$56.6	\$424.8	\$1,865.4	\$1,830.4
Encumbrances	\$34.3	\$19.3	\$15.5	\$0.0	\$69.1	\$83.2

*Includes both Series 2024A and Series 2025A IRB Proceeds

The Bridge and Tunnel Enterprise program currently consists of 243 bridge structures and four tunnel projects, including 15 structures funded with IRB bond funds. The bridge count has increased by five since Q3 FY2025 due to the addition of three bridge replacement projects and two bridge rehabilitation projects. The current programmed amount for these 243 structures and four tunnel projects is approximately \$2,883.0 million. Table 10 below provides an itemization of current allocations by funding source for the BTE program.

Table 10. Current Allocation Plan as of June 30, 2025 (\$ in Millions)

Total Estimated IRB Proceeds	FASTER Bridge	SB21-260	Other Funds	Total Q4 FY2025	Total Q3 FY2025
\$490.4	\$1,522.2	\$443.7	\$426.6	\$2,883.0	\$2,619.2

The Program Allocation Plan³ tracks BTE projects programmed since the beginning of the Series 2010A Bond Program by funding source, preconstruction activity and construction activity. In addition, the Program Allocation Plan includes programmed projects that have yet to be budgeted, beginning with FY2025 through FY2032, and includes budget adjustments that have not been posted as of June 30, 2025. The program life-to-date (LTD) total liabilities for the BTE program are \$2,883.0 million, an increase of \$263.8 million from the \$2,619.2 million total liability reported on March 31, 2025. The increase is primarily due to the addition of the CDOT 10-Year Plan projects that were not previously in the Allocation Plan.

The Four-Year Quarterly Cash Flow Projection⁴ depicts all current available BTE cash balances, forecast revenues, and forecast expenditures for currently programmed projects. Included in the cash flow are proceeds from the Series 2024A and Series 2025A IRB issuances and a third anticipated bond tranche to finance several CDOT 10-Year projects with BTE eligible scope, forecasted drawdowns associated with these projects during this four-year period, and estimated debt service for the bond issuances. More information on BTE's revenue sources and a revenue forecast is provided on page 17.

BTE is actively managing project schedules and evaluating financing for CDOT 10-Year plan projects to maintain a \$25 million cash floor. The current cash flow forecast indicates that the cash balance will remain above the \$25 million cash floor during the four-year period when the anticipated future bond issuances are included. The forecast \$118.8 million cash balance at the end Q2 of Calendar Year (CY) 2029 is expected to be expended on projects that will fall outside this four-year cash flow. BTE will continue to closely monitor project cost estimates, project timing, and revenues and will adjust its Plan of Finance and programmed projects to optimize the Enterprise's cash flow and limit the accumulation of significant cash balances.

³ Reference Appendix C for the Program Allocation Plan

⁴ Reference Appendix D for the Four-Year Quarterly Cash Flow Projection

In 2009, Funding Advancement for Surface Transportation and Economic Recovery, otherwise known as FASTER, was signed into law. The legislation authorized BTE to collect a bridge safety surcharge dedicated to funding projects to address on-system, poor-rated bridges. The surcharge ranges from \$13 to \$32, based on vehicle weight, and is collected annually when vehicles are registered in the state. BTE determines the allocation of these revenues using the BTE Bridge Prioritization Plan, which is a tiered list of BTE-eligible bridges statewide that are ranked using Board- approved prioritization criteria related to safety, risk, mobility, and economic factors. It should also be noted that the Enterprise prioritizes projects included in CDOT'S 10-Year Vision Plan in accordance with its policy and procedural directives.

As of Q4 FY 2025, actual year to date FASTER Bridge Safety Surcharge revenues were \$115.6 million, which is \$5.2 million above the FY2025 revenue forecast of \$110.4 million. This information is shown to the right in Figure E.

In 2021, SB21-260, also known as Sustainability of the Transportation System, modified the scope of the Enterprise to include tunnel projects and authorized it to impose a Bridge and Tunnel Impact fee on special fuel and a Bridge and Tunnel Retail Delivery fee. The Bridge and Tunnel Impact fee is a per gallon special fuel fee that will be phased in from FY 2023 to FY 2032. The Bridge and Tunnel dedicated portion of the Retail Delivery Fee is a flat fee of 2.9 cents that is placed on all retail deliveries. These fees are indexed to the National Highway Construction Cost Index (NHCCI) after FY 2032 and FY 2023, respectively. These revenues are directly used to fund projects to mitigate the impact of vehicles utilizing the state's bridges and tunnels. In accordance with its statute, BTE prioritizes projects included in the CDOT 10-Year Vision Plan when allocating these revenues.

As of Q4 FY 2025, actual year to date SB21-260 revenues were \$35.9 million, which is the same amount as the FY2025 revenue forecast. This information is shown to the right in Figure F.

Figure E. Forecast vs Actual FASTER Revenue Comparison
Statewide Bridge & Tunnel Enterprise
Forecast vs Actual FASTER Revenue Comparison (\$ in millions)

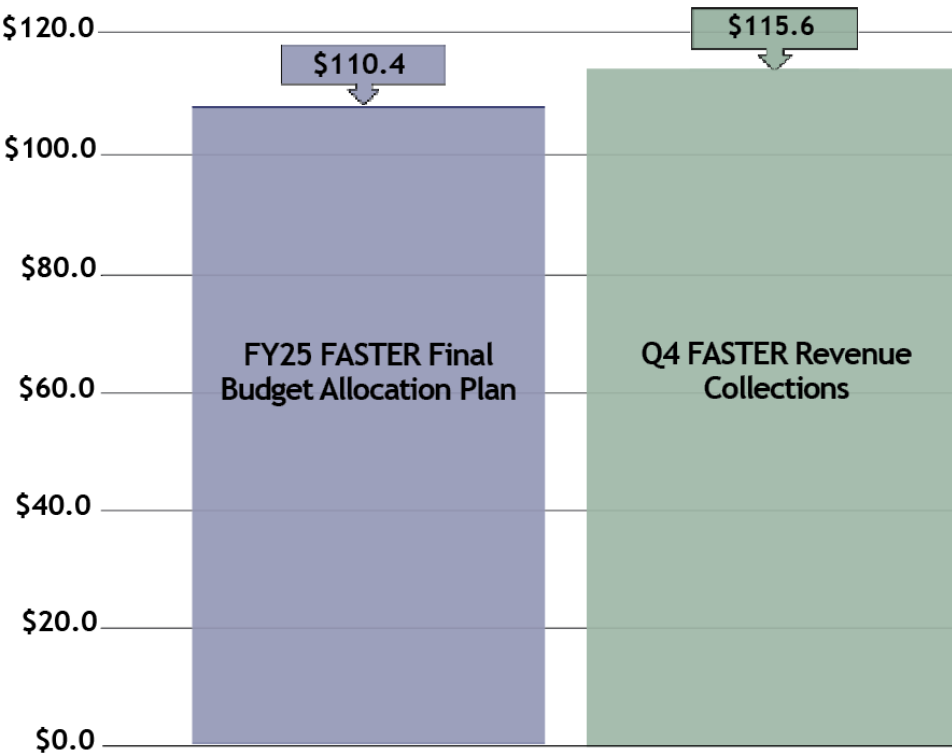
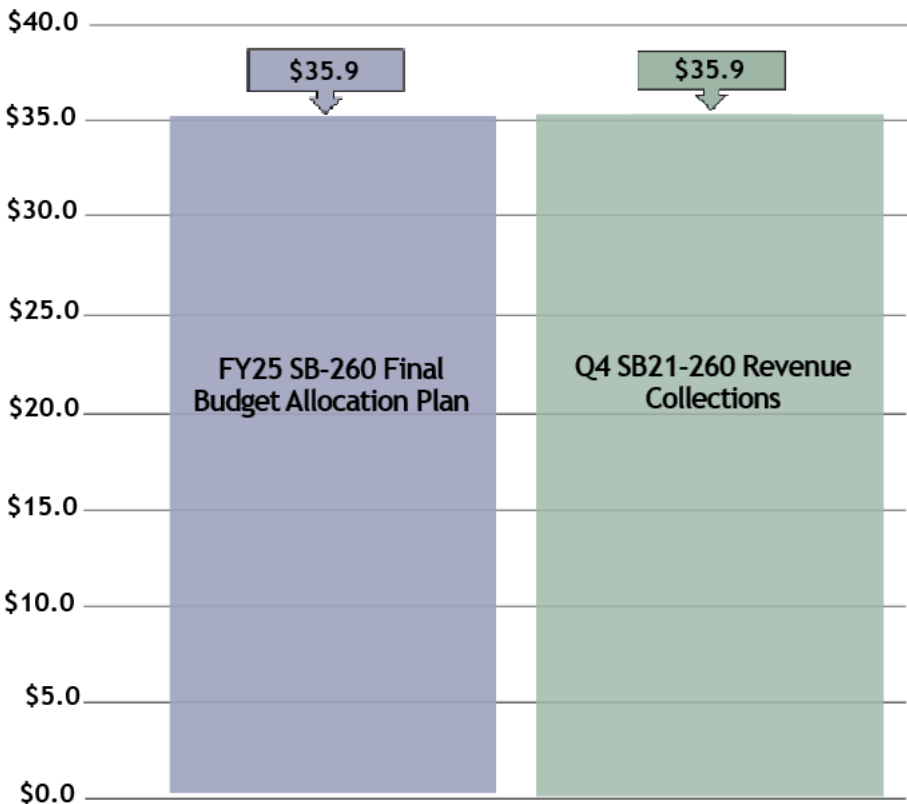


Figure F. Forecast vs Actual SB21-260 Revenue Comparison
Statewide Bridge & Tunnel Enterprise
Forecast vs Actual SB21-260 Revenue Comparison (\$ in millions)



The total program financial performance graphs (Figure G and Figure H) depict actual expenditures and encumbrance balances against projected expenditures for various BTE funding sources. Figure G represents BTE projects from the inception of the program that are funded by all revenue sources with the exception of the BTE Infrastructure Revenue Bonds (IRBs), which are shown in Figure H below. Projected expenditures are forecast at \$1,841 million on June 30, 2025, an increase of \$16 million since March 31, 2025. Actual life-to-date (LTD) expenditures as of June 30, 2025 are \$1,785 million, as compared to \$1,774 million on March 31, 2025, an increase of \$11 million. The current encumbrance balance is \$35 million, \$5 million less than on March 31, 2025.

Figure H represents BTE projects that are funded by the IRB proceeds, including I-70 Floyd Hill Construction Packages #3 and #4, the I-70 Vail Pass Safety and Operations Improvement Project, the I-25 and US 50B Interchange Reconstruction Project, and the US 50 Blue Mesa Bridges Emergency Response Project. Projected expenditures are forecast at \$96 million on June 30, 2025, an increase of \$18 million since March 31, 2025. Actual LTD expenditures as of June 30, 2025 are \$81 million, as compared to \$56 million on March 31, 2025, an increase of \$25 million. The current encumbrance balance is \$34 million, a decrease of \$9 million since March 31, 2025.

Figure G. Statewide Bridge & Tunnel Enterprise Program Performance
Statewide Bridge & Tunnel Enterprise Program Performance
ITD - As of June 30, 2025 (\$ in millions)

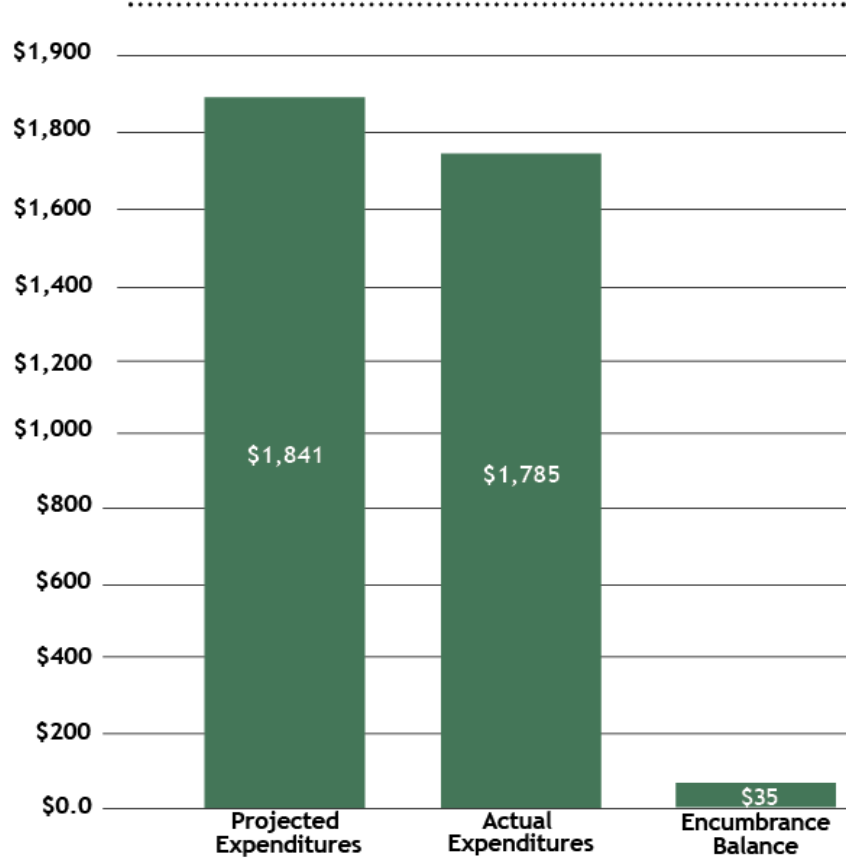
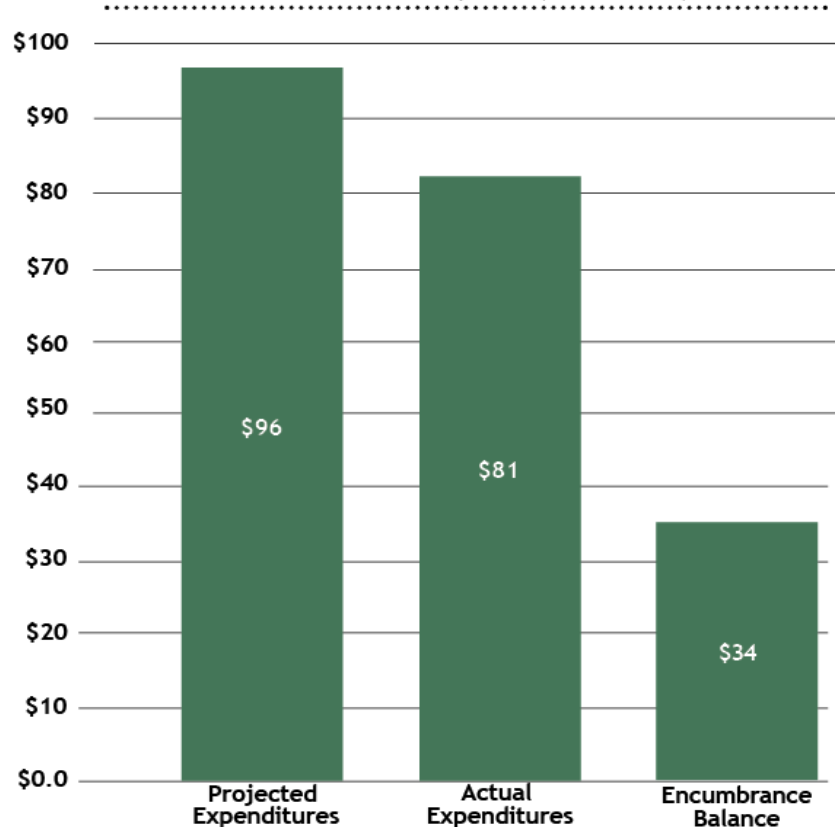


Figure H. Statewide Bridge & Tunnel Enterprise Program Performance IRB
Statewide Bridge & Tunnel Enterprise Program Performance IRB
ITD - As of June 30, 2025 (\$ in millions)



Appendix A - Active Project Portfolio

Original Bridge Number	New Bridge Number	Facility Carried over Featured Intersection	Region	County	Major Project/Bundle	Project Status
E-16-EO	Not Assigned	SPEER BLVD SBND OVER I 25 ML	1	Denver	I-25 Interchange Reconstruction at Speer Boulevard and 23rd Avenue	In Design
E-16-EW	Not Assigned	SPEER BLVD NBND OVER I 25 ML	1	Denver	I-25 Interchange Reconstruction at Speer Boulevard and 23rd Avenue	In Design
F-16-DA	Not Assigned	23RD AVENUE OVER I 25 ML	1	Denver	I-25 Interchange Reconstruction at Speer Boulevard and 23rd Avenue	In Design
E-16-FZ	E-16-FZA	I 70 ML OVER HARLAN STREET	1	Jefferson	I-70/Harlan Bridge Replacement	In Construction
E-16-GX	Not Assigned	I 70 ML WBND OVER SH 391 ML	1	Jefferson	I-70 and Kipling Street Interchange	In Design
E-16-GY	Not Assigned	I 70 ML EBND OVER SH 391 ML	1	Jefferson	I-70 and Kipling Street Interchange	In Design
E-16-JL	E-16-JA	I 70 ML WBND OVER SH 72 ML	1	Jefferson	I-70 Corridor-West Metro Bridges	In Construction
E-17-ID	E-17-AGA	I 270 ML WBND OVER SOUTH PLATTE RIVER	1	Adams	I-270 Improvements and Congestion Relief from I-76 to I-70	In Design
E-17-IE	E-17-AGB	I 270 ML EBND OVER SOUTH PLATTE RIVER	1	Adams	I-270 Improvements and Congestion Relief from I-76 to I-70	In Design
E-17-IF	E-17-AGC	I 270 ML WBND OVER DITCH RD,BURLINGTON CANA	1	Adams	I-270 Improvements and Congestion Relief from I-76 to I-70	In Design
E-17-IG	E-17-AGD	I 270 EBND OVER E 64TH AVE, BURLINGTON CANAL	1	Adams	I-270 Improvements and Congestion Relief from I-76 to I-70	In Design
E-17-IH	E-17-AGE	I 270 ML WBND OVER SH 265 ML,UP RR,BNSF RR	1	Adams	I-270 Improvements and Congestion Relief from I-76 to I-70	In Design
E-17-IJ	E-17-AGG	I 270 ML WBND OVER SERVICE RD, BNSF RR	1	Adams	I-270 Improvements and Congestion Relief from I-76 to I-70	In Design
F-15-BL	F-15-BLA	I 70 ML WBND OVER US 6, CLEAR CREEK	1	Clear Creek	I-70 West: Floyd Hill	In Construction
F-15-BM	F-15-BMA	RAMP TO US 6 ML OVER CLEAR CREEK R	1	Clear Creek	I-70 West: Floyd Hill	In Construction
F-15-D	F-15-DR	I 70 FRONTAGE RD OVER CLEAR CREEK SR	1	Clear Creek	I-70 West: Floyd Hill	In Construction
F-16-HI	F-16-HIA	I 70 ML WBND OVER US 40 ML	1	Jefferson	Regionwide Bridge Rehabilitation and Maintenance	In Design
F-16-O	F-16-YW	US 6 ML OVER SH 121 ML	1	Jefferson	US 6 and Wadsworth Boulevard Interchange	In Design
F-20-BA	Not Assigned	I 70 ML EBND OVER US 40 FRONTAGE ROAD	1	Arapahoe		In Design
F-20-BB	Not Assigned	I 70 ML WBND OVER US 40 FRONTAGE RD	1	Arapahoe		In Design
I-17-GQ	I-17-GS	I 25 ML NBND OVER ACADEMY BLVD	2	El Paso	I-25 and CO 94 Safety and Mobility Improvements (MAMSIP)	In Construction
I-17-GR	I-17-GS	I 25 ML SBND OVER ACADEMY BLVD	2	El Paso	I-25 and CO 94 Safety and Mobility Improvements (MAMSIP)	In Construction
J-18-M	Not Assigned	US 85 ML OVER FOUNTAIN CREEK	2	El Paso		In Design
K-18-J	K-18-JA K-18-JB	US 50 ML OVER I 25 ML	2	Pueblo	I-25 through Pueblo New Freeway	In Construction
K-18-L	K-18-LA	US 50 ML OVER FOUNTAIN CREEK	2	Pueblo	I-25 through Pueblo New Freeway	In Construction
N-17-AC	Not Assigned	I 25 ML NBND OVER US 160,SH 10, RR SPUR	2	Huerfano		In Design
B-07-S	Not Assigned	SH 13 ML OVER FORTIFICATION CREEK	3	Moffat		In Design
C-08-A_Minor	Not Assigned	US 40 ML OVER SHELTON DITCH	3	Routt		In Design
D-11-N	Not Assigned	SH 9 ML OVER UPRR	3	Grand		In Design
F-06-A	F-06-AI	US 6 ML OVER ELK CREEK	3	Garfield		In Design
F-12-AS	F-12-ASA	I 70 ML EBND OVER POLK CREEK	3	Eagle	I-70 West: Vail Pass Safety Improvements - Phase 1	In Construction
H-03-BL	Rehab	SH 141 ML OVER COLORADO RIVER	3	Mesa		In Design
J-04-X	Not Assigned	SH 348 ML OVER IRONSTONE CANAL	3	Montrose		In Design
K-07-A	Rehab	US 50 ML OVER LAKE FK GUNNSION RIVER	3	Gunnison	Blue Mesa Rehabilitation	In Construction
K-07-B	Rehab	US 50 ML OVER GUNNISON/BUE MESA RES	3	Gunnison	Blue Mesa Rehabilitation	In Construction
A-27-A	A-27-AA	US 385 ML OVER DRAW	4	Sedgwick		In Design
B-24-A	Not Assigned	US 6 ML EBND OVER STERLING CANAL NO 1	4	Logan	Holyoke Bundle	In Construction
B-27-A	B-27-AAA	US 6 ML OVER FRENCHMAN CREEK	4	Phillips	Holyoke Bundle	In Construction
B-27-D	B-27-DA	US 6 ML OVER FRENCHMAN CREEK	4	Phillips	Holyoke Bundle	In Construction
B-27-F	B-27-FA	US 6 ML OVER DRAW	4	Phillips	Holyoke Bundle	In Construction
C-22-AY	Not Assigned	I 76 ML WBND OVER BNSF RR, BEAVER CREEK	4	Morgan	I-76 Phase IV Reconstruction from Fort Morgan to Brush: Multimodal Project Discretionary Grant	In Design
C-22-BG	Not Assigned	I 76 ML EBND OVER US 34 SPUR	4	Morgan	I-76 Phase IV Reconstruction from Fort Morgan to Brush: Multimodal Project Discretionary Grant	In Design
G-19-B	Not Assigned	SH 86 ML OVER KIOWA CREEK	4	Elbert		In Design
I-24-N	I-24-Z	US 40 ML OVER DRAW	4	Lincoln		In Construction
K-09-B	Rehab	SH 114 ML OVER COCHETOPA CREEK	5	Saguache		In Design
L-11-C	Not Assigned	SH 114 ML OVER SAGUACHE CREEK	5	Saguache		In Design
P-05-B	P-05-BC	US 160 ML OVER FLORIDA RIVER	5	La Plata	US 160 Elmore's Corner East	In Design
P-12-A	P-12-AA	US 285 ML OVER CONEJOS RIV.OVERFLOW	5	Conejos		In Design

Appendix B - Bridge Prioritization Plan

Good Better Best

Status	Original Bridge Number	Region	Facility Carried over Featured Intersection	CDOT Ten-Year Plan Project	Prioritization Color Code	Readiness Color Code	Resource Availability Color Code
Top Tier							
Design Complete	P-12-A	5	US 285 ML Over Conejos River Overflow				
In Design	E-17-IE	1	I 270 ML EBND Over South Platte River				
In Design	F-16-O	1	US 6 ML Over SH 121 ML	•			
In Design	E-17-ID	1	I 270 ML WBND Over South Platte River				
In Design	C-22-AY	4	I 76 ML WBND Over BNSF RR, Beaver Creek	•			
In Design	E-17-IF	1	I 270 ML WBND Over Ditch Rd,Burlington Canal				
In Design	E-17-IG	1	I 270 ML EBND Over Ditch Rd,Burlington Canal	•			
In Design	C-22-BG	4	I 76 ML EBND Over US 34 Spur				
In Design	E-17-IH	1	I 270 ML WBND Over SH 265 ML,UPRR,BNSF RR	•			
In Design	E-17-IJ	1	I 270 ML WBND Over Service Rd, BNSF RR				
In Design	E-16-JU	1	I 76 ML WBND Over Marshall Street				
In Design	E-16-JV	1	I 76 ML EBND Over Ramp To SH 121 ML				
In Design	E-16-JW	1	I 76 ML WBND Over Ramp To SH 121 ML				
In Design	E-16-JX	1	I 76 ML EBND Over I 70 ML WBND				
In Design	C-08-A_Minor	3	US 40 ML Over Shelton Ditch				
In Design	B-24-A	4	US 6 ML EBND Over Sterling Canal No 1				
In Design	G-19-B	4	SH 86 ML Over Kiowa Creek				
In Design	F-16-HI	1	I 70 ML WBND Over US 40 ML				
In Design	J-18-M	2	US 85 ML Over Fountain Creek				
Remaining	E-17-AT	1	SH 6 ML Over Sand Creek				
In Design	F-11-T	3	US 24 ML Over Eagle River				
In Design	L-11-C	5	SH 114 ML Over Saguache Creek				
Remaining	K-18-BT	2	SH 96 ML Over UPRR, Fountain Crk				
In Design	E-16-EO	1	Speer Blvd SBND Over I 25 ML				
In Design	N-17-AC	2	I 25 ML NBND Over US 160,SH 10, RR Spur				
In Design	D-11-N	3	SH 9 ML Over UPRR				
In Design	F-16-DA	1	23rd Avenue Over I 25 ML	•			
Remaining	E-17-EP	1	SH6 Ditch Rider Rd Over Burlington Canal				
Remaining	F-20-C	1	I 70 Service Rd Over Rattlesnake Creek				
In Design	E-16-GY	1	I 70 ML EBND Over SH 391 ML				
Remaining	F-16-OG	1	Ramp To I 25 NBND Over US 6 ML				
Remaining	E-16-JJ	1	Ramp To I 70 EBND Over I 70 ML				
Remaining	F-16-HS	1	I 70 WBND Ramp Over US 6 ML				
Remaining	F-16-GT	1	I 70 ML WBND Over County Rd 93				
Remaining	F-16-HK	1	I 70 ML WBND Over West 20Th Ave	•			
Remaining	E-16-IT	1	I 76 ML WBND Over Clear Creek				
Remaining	E-16-IU	1	I 76 ML EBND Over Clear Creek				
Remaining	E-16-JT	1	I 76 ML EBND Over Marshall Street				
Remaining	F-10-AA	3	I 70 ML WBND Over US 6, RR, Eagle River				
Remaining	F-18-AR	1	I 70 ML WBND Over County Roads 26N,105				

Status	Original Bridge Number	Region	Facility Carried over Featured Intersection	CDOT Ten-Year Plan Project	Prioritization Color Code	Readiness Color Code	Resource Availability Color Code
Remaining	F-18-AS	1	I 70 ML EBND Over County Roads 26N,105				
Remaining	F-18-AT	1	I 70 ML WBND Over County Roads 28N,113				
Remaining	F-18-AV	1	I 70 ML EBND Over County Roads 28N,113				
Remaining	F-19-AL	1	I 70 ML WBND Over County Roads 31N,125				
Remaining	F-19-AM	1	I 70 ML EBND Over County Roads 31N,125				
Remaining	F-20-AX	1	I 70 ML WBND Over County Road 201				
Remaining	F-20-AY	1	I 70 ML EBND Over County Road 201				
Remaining	F-20-BG	1	I 70 ML WBND Over County Road 197				
Remaining	F-20-BI	1	I 70 ML EBND Over County Road 197				
Remaining	G-17-AC	1	CR107 (Liggett Rd) Over I 25 ML				
Remaining	H-11-U	3	SH 300 ML Over Lake Fork Creek				
Remaining	C-26-A	4	SH 59 ML Over Coyote Creek				
In Design	E-16-GX	1	I 70 ML WBND Over SH 391 ML	•			
Remaining	L-27-O	2	US 385 ML Over Amity Canal				
Remaining	G-17-AL	1	SH 105 ML Over Draw				
Remaining	L-20-C	2	US 50 ML Over Farmers Oxford Ditch				
Remaining	F-11-AP	3	I 70 ML WBND Over Timber Creek				
Remaining	F-11-AT	3	I 70 ML WBND Over Black Gore Creek				
Remaining	M-16-D	2	SH 69 ML Over Williams Creek				
In Design	F-17-GN	1	Alameda Ave Over I 225 ML				
Remaining	C-18-BH	4	US 34 EBND Over UPRR	•			
Remaining	L-22-V	2	SH 109 ML Over Draw				
Remaining	B-18-I	4	SH 14 ML Over Eaton Ditch				
Remaining	F-16-HO	1	I 70 ML EBND Over Moss Street, W 7Th Ave				
Remaining	F-20-BC	1	I 70 ML EBND Over I 70 Buss Rt				
Remaining	O-18-C	2	I-25 ML over Gonzales Canyon Creek				
Remaining	B-26-E	4	SH 59 ML Over Six Mile Creek	•			
Remaining	C-09-Q	3	SH 131 ML Over UPRR				
Remaining	F-08-Q	3	I 70 ML EBND Over Colorado River				
Remaining	F-08-R	3	I 70 ML WBND Over Colorado River				
Remaining	F-12-AL	3	I 70 ML WBND Over Corral Creek				
Remaining	F-12-AO	3	I 70 ML EBND Over Guller Gulch				
Remaining	M-17-O	2	I 25 ML NBND Over Graneros Creek				
Remaining	E-14-S	1	US 40 ML Over I 70 ML, Clear Creek				
Remaining	F-17-CZ	1	US 285 ML Over Little Dry Creek				
Remaining	D-09-Z	3	SH 131 ML over Chimney Rock Creek				
Remaining	F-08-D	3	I 70 Frontage Sr Over UPRR Sr				
Remaining	F-12-AM	3	I 70 ML EBND Over Smith Gulch				
Remaining	F-17-AA	1	SH 177 ML Over Little Dry Creek				
Remaining	C-18-AP	4	US 34 ML WBND Over US 85 Bus Rt				
Remaining	F-19-AF	1	County Road Over I 70 ML				

Status	Original Bridge Number	Region	Facility Carried over Featured Intersection	CDOT Ten-Year Plan Project	Prioritization Color Code	Readiness Color Code	Resource Availability Color Code
Remaining	P-17-K	2	SH 12 ML Over Draw				
Second Tier							
In Design	J-04-X	3	SH 348 ML Over Ironstone Canal				
In Design	B-07-S	3	SH 13 ML Over Fortification Creek				
In Design	G-17-AG	1	Happy Canyon Road Over I 25 ML				
In Design	H-03-BL	3	SH 141 ML Over Colorado River				
Remaining	F-16-HH*	1	I 70 ML EBND Over US 40 ML				
Remaining	I-17-R	2	US 85 ML Over Fountain Creek				
In Design	E-16-EW	1	Speer Blvd NBND Over I 25 ML				
Remaining	I-17-CO	2	US 85 ML Over I 25 ML	•			
Remaining	E-17-IC	1	York Street Over I 270 ML				
In Design	K-09-B	5	SH 114 ML Over Cochetopa Creek				
Remaining	K-18-AD	2	SH 96 ML Over Big Dry Creek				
Remaining	E-17-IN	1	I 270 ML WBND Over Dahlia Street	•			
Remaining	D-15-AQ	4	SH 7 ML WBND Over Boulder Creek				
Remaining	D-15-AR	4	US 36 ML WBND Over Boulder Creek				
Remaining	H-11-AB	3	SH 300 ML Over California Gulch				
Remaining	C-23-E	4	I 76 ML WBND Over Twenty Two Slough				
Remaining	L-26-M	2	US 50 ML Over Willow Creek				
Remaining	C-18-AV	4	US 34 ML EBND Over Ramp To US85 SBND, 8th Ave	•			
Remaining	F-20-D	1	US 36 ML Over East Bijou Creek				
Remaining	L-19-G	2	SH 96 ML Over Bob Creek Canal				
Remaining	C-12-B	3	SH 125 ML over Willow Creek				
Remaining	K-15-G	2	US 50 ML Over Draw				
Remaining	K-19-W	2	US 50 Service Rd Over BNSF RR				
Remaining	E-14-AV	1	I 70 ML Over Clear Creek				
Remaining	F-16-BC	1	SH 88 ML Over Bear Creek				
Remaining	N-28-G	2	SH 116 ML Over Beaty Creek				
Remaining	N-28-H	2	SH 116 ML Over Buffalo Creek				
Remaining	O-03-J	5	US 160 Business Rt Over Mancos River				
Remaining	O-18-BI	2	County Road 63.1 Over I 25 ML				
Remaining	G-04-A	3	US 6 ML Over Colorado River				
Remaining	F-19-F	1	US 36 ML Over Draw				
Remaining	B-26-F	4	SH 59 ML Over Sandy Creek				
Remaining	C-18-BO	4	US 85 ML NBND Over Cache La Poudre River				
Remaining	G-18-BC	1	SH 83 ML Over West Cherry Creek				
Remaining	E-16-HS	1	SH 121 ML SBND Over US 287 ML, RR Spur				
Remaining	G-11-T	3	US 24 ML Over UPRR				
Remaining	K-18-EL	2	Bonforte Blvd Over SH 47 ML				
Remaining	P-19-G	2	US 160 ML Over RR Spur				
Remaining	C-18-AG	4	US 85 ML SBND Over South Platte River				

Status	Original Bridge Number	Region	Facility Carried over Featured Intersection	CDOT Ten-Year Plan Project	Prioritization Color Code	Readiness Color Code	Resource Availability Color Code
Remaining	C-18-BK	4	US 85 Bypass SBND Over US 85 Bus Rt				
Remaining	F-16-FH	1	SH 95 ML NBND Over Bear Creek				
Remaining	E-17-HC	1	Dahlia Street Over I 76 ML				
Remaining	N-17-L	2	I 25 Bus Rt Over Bear Creek				
Remaining	O-26-I	2	US 160 ML Over Draw				
Remaining	A-15-A	4	US 287 ML Over Dale Creek				
Remaining	C-17-DF	4	SH 392 ML Over Cache La Poudre River				
Remaining	E-17-HD	1	SH 35 ML Over Sand Creek				
Remaining	F-17-ES	1	I 225 ML Over Goldsmith Gulch				
Remaining	L-05-C	5	Farm Access To 550 Over Cow Creek				
Remaining	H-16-M	2	SH 67 ML Over Long Gulch Creek				
Remaining	C-15-M	4	US 34 ML Over Devils Gulch				
Remaining	K-16-B	2	US 50 ML WBND Over Six Mile Creek				
Remaining	P-19-AP	2	US 350 ML over Draw				
Remaining	F-16-FI	1	SH 95 ML SBND Over Bear Creek				
Remaining	K-19-V	2	Ordnance Road Over US 50 ML				
Remaining	L-21-G	2	US 50 ML EBND Over Apishapa River				
Remaining	M-01-G	5	US 491 ML Over Coal Bed Creek				
Remaining	E-16-HQ	1	Mcintyre Street Over SH 58 ML				
Remaining	C-16-W	4	US 34 ML WBND Over Barnes Inlet Canal				
Remaining	D-15-AP	4	US 36 Fr Rd Over Boulder Creek				
Remaining	F-22-V	4	US 36 ML Over Vega Creek				
Remaining	E-16-DP	1	SH 391 ML Over Clear Creek				
Remaining	H-02-FI	3	I 70 Frontage Rd Over Adobe Creek				
Remaining	L-19-A	2	US 50 Business Over Six Mile Creek				
Remaining	P-09-X	5	IRR# US 84 ML Over Coyote Creek				
Third Tier							
In Design	P-05-B	5	US 160 ML Over Florida River				
Remaining	I-17-IL	2	Maxwell Street Over Draw				
Remaining	F-15-AE	1	Lookout Mountain Road Over I 70 ML				
Remaining	H-03-AY	3	I 70 ML Over US 6 ML, UPRR, Colo River				
Remaining	F-11-AD	3	I 70 ML Over US 6/24, RR, Eagle River				
Remaining	K-27-A	2	US 385 ML Over Draw				
Remaining	F-16-GG	1	Perry Street Over US 6 ML				
Remaining	D-19-A	4	I 76 Service Rd Over Lost Creek				
Remaining	F-20-F	1	US 40 ML Over East Bijou Creek				
Remaining	H-13-R	2	SH 9 ML Over Middle Fk S.Platte River				
Remaining	H-13-M	2	US 24 ML Over Middle Fk S.Platte River				
Remaining	F-08-AH	3	I 70 ML EBND Over Access Rd, Colorado River				
Remaining	F-08-BA	3	I 70 ML EBND Over Colorado River				
Remaining	F-10-AB	3	I 70 ML EBND Over US 6, RR, Eagle River				

Status	Original Bridge Number	Region	Facility Carried over Featured Intersection	CDOT Ten-Year Plan Project	Prioritization Color Code	Readiness Color Code	Resource Availability Color Code
Remaining	F-11-AO	3	I 70 ML EBND Over Timber Creek				
Remaining	F-16-GS*	1	I 70 ML EBND Over County Rd 93				
Remaining	F-16-HJ*	1	I 70 ML EBND Over West 20Th Ave				
Remaining	F-16-HN*	1	I 70 ML WBND Over Moss Street, W 7Th Ave				
Remaining	G-04-R	3	US 6 ML Over Parachute Creek				
Remaining	G-22-BL	4	I 70 ML EBND Over US 24 ML				
Remaining	G-22-H	4	US 24 ML Over Draw				
Remaining	E-13-F	3	US 40 ML Over Crooked Creek				
Remaining	F-19-AJ	1	I 70 Strasburg Spu Over UPRR				
Remaining	N-01-A	5	US 491 ML Over Alkali Creek				
Remaining	G-21-Y	4	I 70 Business Spur Over I 70 ML				
Remaining	H-03-E	3	US 6 ML Over Colorado River				
Remaining	I-17-O	2	I 25 Service Rd Over Pine Creek				
Remaining	I-19-B	2	SH 94 ML Over Big Spring Creek				
Remaining	M-16-Q	2	SH 69 ML Over Draw				
Remaining	D-15-AV *	4	SH 7 ML EBND Over Boulder Creek				
Remaining	F-15-Q	1	US 40 ML Over Beaver Brook				
Remaining	G-19-D	4	SH 86 ML Over West Bijou Creek				
Remaining	E-16-MO	1	44Th Ave Over I 25 ML				
Remaining	F-20-AT *	1	I 70 ML WBND Over Draw				
Remaining	D-13-V	3	US 34 ML Over Stillwater Creek				
Remaining	F-06-Z	3	I 70 ML WBND Over Colorado River				
Remaining	J-12-AK	5	SH 291 ML Over Cr 150, Arkansas River				
Remaining	P-19-G_MINOR	2	SH 239 ML Over Canal				
Remaining	G-22-BB	4	SH 71 ML Over I 70 ML				
Remaining	D-15-AX *	4	US 36 ML EBND Over Boulder Creek				
Remaining	F-15-BC	1	US 6 ML Over Clear Creek				
Remaining	K-13-O	2	US 50 ML Over Draw				
Remaining	N-17-BG	2	I 25 ML NBND Over Sull Creek				
Remaining	I-17-X	2	US 24 Service Rd Over Fountain Creek				
Remaining	K-14-B	2	US 50 ML Over Oak Creek				
Remaining	D-15-AZ	4	EBND US 36 ML Over US 36 Spur/Baseline Rd				
Remaining	K-19-U	2	US 50 ML EBND Over Chico Creek				
Remaining	E-16-HR *	1	SH 121 ML NBND Over US 287 ML, RR Spur				
Remaining	F-16-KW	1	SH 470 ML WBND Over I 70 ML				
Remaining	F-19-AG *	1	SH 79 ML Over I 70 ML				
Remaining	O-12-AD	5	SH 371 ML Over Alamosa River				

Appendix C - Program Allocation Plan

Statewide Bridge and Tunnel Enterprise

As of June 30, 2025 (FY25 - Q4)

Original Bridge Key	Location/Project	Region	Project Accounting Number	Count	Project Type	Total Precon FASTER Funds	Total Precon SB-260 Funds	Precon Infrastructure Revenue Bonds ¹	Total Precon Other Funds ²	Total Precon Funds	Total Construction FASTER Funds	Total Construction SB-260	Construction Infrastructure Revenue Bonds ¹	Total Construction Other Funds ²	Total Construction Funds	Total Project Funds	Precon Start Date	Ad Date	Construction Start Date	Construction Completion Date
E-17-EZ	84TH Ave over I-25 ML	1	17535	1	Bridge Replacement and Major Rehabilitation	\$0	\$0	\$0	\$969,937	\$969,937	\$1	\$0	\$0	\$8,956,344	\$8,956,345	\$9,926,282				
F-14-B	I-70 FRONTAGE ROAD over Clear Creek	1	17671	1	Bridge Replacement and Major Rehabilitation	\$16,620	\$0	\$0	\$209,788	\$226,408	\$0	\$0	\$0	\$1,700,685	\$1,700,685	\$1,927,093				
F-17-AE	SH30 ML Havana over Cherry Creek	1	18081	1	Bridge Replacement and Major Rehabilitation	\$50,896	\$0	\$0	\$141,823	\$192,719	\$3,764,587	\$0	\$0	\$113,337	\$3,877,924	\$4,070,643				
F-19-B	US 36 ML over COMANCHE CREEK	1	18276	1	Bridge Replacement and Major Rehabilitation	\$87,922	\$0	\$0	\$480,916	\$568,838	\$0	\$0	\$0	\$1,293,744	\$1,293,744	\$1,862,582	11/1/2010	1/5/2012	4/23/2012	6/15/2012
G-16-B	US 85 Cook Ranch Road to Louviers over draws	1	18899	1	Bridge Replacement and Major Rehabilitation	\$0	\$0	\$0	\$0	\$0	\$40,845	\$0	\$0	\$2,952,598	\$2,993,443	\$2,993,443		6/28/2012	10/19/2012	11/15/2013
G-16-C	US 85 Cook Ranch Road to Louviers over draws	1	18899	1	Bridge Replacement and Major Rehabilitation	See G-16-B	See G-16-B	See G-16-B	See G-16-B	See G-16-B	See G-16-B	See G-16-B	See G-16-B	See G-16-B	See G-16-B	See G-16-B		6/28/2012	10/19/2012	11/15/2013
G-17-A	US 85 over Sand Creek	1	19201	1	Bridge Replacement and Major Rehabilitation	\$22,913	\$0	\$0	\$280,566	\$303,479	\$3,383,656	\$0	\$0	\$0	\$3,383,656	\$3,687,136	3/2/2012	2/28/2020	8/17/2020	7/1/2022
F-16-DT	I-25 SANTA FE BRIDGES	1	18107	1	Bridge Replacement and Major Rehabilitation	\$624,989	\$0	\$0	\$103,040	\$728,029	\$2,977,229	\$0	\$0	\$11,225,034	\$14,202,263	\$14,930,292	11/4/2010	3/16/2011	7/11/2011	7/7/2014
F-16-DW	I-25 SANTA FE BRIDGES	1	18107	1	Bridge Replacement and Major Rehabilitation	See F-16-DT	See F-16-DT	See F-16-DT	See F-16-DT	See F-16-DT	See F-16-DT	See F-16-DT	See F-16-DT	See F-16-DT	See F-16-DT	See F-16-DT	11/4/2010	3/16/2011	7/11/2011	7/7/2014
E-17-GE	I 70 ML WBND over SAND CREEK	1	17537	1	Bridge Replacement and Major Rehabilitation	\$0	\$0	\$0	\$1,332,918	\$1,332,918	\$72,565	\$0	\$0	\$9,190,738	\$9,263,303	\$10,596,221	3/31/2010	3/31/2011	7/29/2011	7/6/2012
E-17-BY	I 70 ML EBND over SAND CREEK	1	17537	1	Bridge Replacement and Major Rehabilitation	See E-17-GE	See E-17-GE	See E-17-GE	See E-17-GE	See E-17-GE	See E-17-GE	See E-17-GE	See E-17-GE	See E-17-GE	See E-17-GE	See E-17-GE	3/31/2010	3/31/2011	7/29/2011	7/6/2012
E-17-GM	I 76 ML EBND over SOUTH PLATTE RIVER	1	18070	1	Bridge Replacement and Major Rehabilitation	\$962,189	\$0	\$0	\$0	\$962,189	\$23,276	\$0	\$0	\$12,080,497	\$12,103,773	\$13,065,962	3/29/2010	5/19/2011	9/12/2011	7/13/2012
E-17-GL	I 76 ML WBND over SOUTH PLATTE RIVER	1	18070	1	Bridge Replacement and Major Rehabilitation	See E-17-GM	See E-17-GM	See E-17-GM	See E-17-GM	See E-17-GM	See E-17-GM	See E-17-GM	See E-17-GM	See E-17-GM	See E-17-GM	See E-17-GM	3/29/2010	5/19/2011	9/12/2011	7/13/2012
F-16-FW	US 287-SH 88 over US 40 ML	1	18083	1	Bridge Replacement and Major Rehabilitation	\$603,407	\$0	\$0	\$516,500	\$1,119,907	\$14,414	\$0	\$0	\$6,420,641	\$6,435,055	\$7,554,962	3/31/2010	6/30/2011	9/26/2011	1/16/2013
F-16-CS	SH121 ML-WADSWORTH over BEAR CREEK	1	18220	1	Bridge Replacement and Major Rehabilitation	\$1,076,625	\$0	\$0	\$0	\$1,076,625	\$120,892	\$0	\$0	\$8,780,759	\$8,901,651	\$9,978,276	4/1/2010	10/20/2011	3/26/2012	8/30/2013
E-16-GQ	SH 95 ML over UP RR, RR SPUR	1	18082	1	Bridge Replacement and Major Rehabilitation	\$0	\$0	\$0	\$396,399	\$396,399	\$60,333	\$0	\$0	\$6,293,279	\$6,353,612	\$6,750,011	4/29/2008	2/2/2012	4/24/2012	11/1/2013
F-16-FL	US 6 ML over SH 95 ML/SHERIDAN AVE.	1	18154	1	Bridge Replacement and Major Rehabilitation	\$585,721	\$0	\$0	\$318,483	\$904,204	\$312	\$0	\$0	\$12,626,612	\$12,626,924	\$13,531,128	4/1/2009	10/21/2011	1/3/2012	7/12/2013
E-16-FK	SH 121 WADSWORTH PARKWAY ML SBND over US 36 ML	1	18194	1	Bridge Replacement and Major Rehabilitation	\$0	\$0	\$0	\$1,571,097	\$1,571,097	\$4,273,930	\$0	\$0	\$19,370,801	\$23,644,731	\$25,215,828	5/27/2011	9/30/2011	5/10/2012	10/30/2013
E-16-FL	CNTY RD / OLD WADS over US 36 ML	1	18195	1	Bridge Replacement and Major Rehabilitation	\$583,182	\$0	\$0	\$1,500,620	\$2,083,802	\$1,878,228	\$0	\$0	\$8,537,572	\$10,415,800	\$12,499,601	5/27/2011	9/30/2011	5/10/2012	10/30/2013
F-17-F	US 40 ML EBND over SAND CREEK	1	18180	1	Bridge Replacement and Major Rehabilitation	\$0	\$0	\$0	\$1,819,331	\$1,819,331	\$1,250,185	\$0	\$0	\$6,000,689	\$7,250,874	\$9,070,205	8/1/2011	5/2/2013	7/23/2013	3/16/2015
F-17-BS	US 40 ML WBND over SAND CREEK	1	18180	1	Bridge Replacement and Major Rehabilitation	See F-17-F	See F-17-F	See F-17-F	See F-17-F	See F-17-F	See F-17-F	See F-17-F	See F-17-F	See F-17-F	See F-17-F	See F-17-F	8/1/2011	5/2/2013	7/23/2013	3/16/2015
E-16-FW	PECOS STREET over I 70 ML	1	18149	1	Bridge Replacement and Major Rehabilitation	\$6,097,615	\$0	\$0	\$512,347	\$6,609,962	\$249,582	\$0	\$0	\$18,477,698	\$18,727,280	\$25,337,242	4/1/2011	8/7/2012	11/5/2012	10/1/2013
E-17-EX	PEORIA STREET over I 76 ML	1	18152	1	Bridge Replacement and Major Rehabilitation	\$10,998	\$0	\$0	\$1,466,306	\$1,477,304	\$14,108	\$0	\$0	\$3,299,496	\$3,313,604	\$4,790,908	4/1/2011	5/2/2013	7/24/2013	12/5/2013
F-16-F	US 85 ML NBND over DAD CLARK GULCH	1	18191	1	Bridge Replacement and Major Rehabilitation	\$0	\$0	\$0	\$686,671	\$686,671	\$0	\$0	\$0	\$2,316,449	\$2,316,449	\$3,003,119	10/14/2011	8/16/2012	11/27/2012	9/5/2013
F-17-DM	SH 88 ML/ARAP RD over CHERRY CREEK	1	18147	1	Bridge Replacement and Major Rehabilitation	\$7,611,291	\$0	\$0	\$850,700	\$8,461,991	\$9,821,300	\$0	\$0	\$11,060,728	\$20,882,028	\$29,344,019	2/1/2011	8/15/2013	10/21/2013	8/3/2015
F-17-DM	Wetland Monitoring	1	21474	0	Bridge Replacement and Major Rehabilitation	\$159,589	\$0	\$0	\$0	\$159,589	\$0	\$0	\$0	\$0	\$0	\$159,589				
E-17-DC	I 76 ML EBND over UP RR	1	18151	1	Bridge Replacement and Major Rehabilitation	\$2,477,672	\$0	\$0	\$0	\$2,477,672	\$11,628,627	\$0	\$0	\$1,371,722	\$13,000,349	\$15,478,021	4/15/2011	2/14/2014	8/4/2014	11/6/2015
E-17-DU	I 76 ML WBND over UP RR	1	18151	1	Bridge Replacement and Major Rehabilitation	See E-17-DC	See E-17-DC	See E-17-DC	See E-17-DC	See E-17-DC	See E-17-DC	See E-17-DC	See E-17-DC	See E-17-DC	See E-17-DC	See E-17-DC	4/15/2011	2/14/2014	8/4/2014	11/6/2015
E-17-ER	SH 44 ML over BULL SEEP	1	18206	1	Bridge Replacement and Major Rehabilitation	\$0	\$0	\$0	\$3,735,924	\$3,735,924	\$5,182,593	\$0	\$0	\$4,178,032	\$9,360,625	\$13,096,548	7/1/2011	9/26/2013	1/6/2014	8/14/2015
E-17-CA	SH44 ML(104TH AVE) over SOUTH PLATTE RIVER	1	18206	1	Bridge Replacement and Major Rehabilitation	See E-17-ER	See E-17-ER	See E-17-ER	See E-17-ER	See E-17-ER	See E-17-ER	See E-17-ER	See E-17-ER	See E-17-ER	See E-17-ER	See E-17-ER	7/1/2011	9/26/2013	1/6/2014	8/14/2015
F-16-EF	US 6 ML over SOUTH PLATTE RIVER	1	19190	1	Bridge Replacement and Major Rehabilitation	\$0	\$0	\$0	\$0	\$0	\$9,750,739	\$0	\$0	\$6,942,205	\$16,692,944	\$16,692,944	9/1/2011	10/15/2012	6/30/2013	12/21/2015
F-16-EN	US 6 ML over BRYANT STREET	1	18192	1	Bridge Replacement and Major Rehabilitation	\$3,530,749	\$0	\$0	\$5,445,850	\$8,976,599	\$11,000,419	\$0	\$0	\$16,067,616	\$27,068,035	\$36,044,634	9/1/2011	10/15/2012	6/30/2013	12/21/2015
F-16-EJ	US 6 ML over BNSF RR	1	18202	1	Bridge Replacement and Major Rehabilitation	\$1,195,223	\$0	\$0	\$0	\$1,195,223	\$4,447,009	\$0	\$0	\$7,595,919	\$12,042,928	\$13,238,151	9/1/2011	10/15/2012	6/30/2013	12/21/2015
F-17-GO	US 40 ML EBND over TOLLGATE CREEK	1	18204	1	Bridge Replacement and Major Rehabilitation	\$0	\$0	\$0	\$2,325,420	\$2,325,420	\$9,117,758	\$0	\$0	\$738,325	\$9,856,084	\$12,181,503	2/1/2011	1/16/2014	6/9/2014	9/22/2016
F-17-GA	US 40 ML WBND over TOLLGATE CREEK	1	18204	1	Bridge Replacement and Major Rehabilitation	See F-17-GO	See F-17-GO	See F-17-GO	See F-17-GO	See F-17-GO	See F-17-GO	See F-17-GO	See F-17-GO	See F-17-GO	See F-17-GO	See F-17-GO	2/1/2011	1/16/2014	6/9/2014	9/22/2016
E-16-HA	SH 58 over FORD	1	18770	1	Bridge Replacement and Major Rehabilitation	\$0	\$0	\$0	\$692,994	\$692,994	\$57,877	\$0	\$0	\$5,271,384	\$5,329,261	\$6,022,255	11/14/2011	3/21/2013	6/3/2013	6/27/2014
E-16-AA	US 287 Federal over BNSF at 69th Ave.	1	18908	1	Bridge Replacement and Major Rehabilitation	\$1,073,902	\$0	\$0	\$2,260,507	\$3,334,409	\$15,230,467	\$0	\$0	\$522,453	\$15,752,920	\$19,087,329	11/1/2012	11/20/2014	1/29/2015	11/18/2016
E-16-AA	US 287 Federal over BNSF at 69th Ave.	1	20513	0	Bridge Replacement and Major Rehabilitation	\$648,232	\$0	\$0	\$0	\$648,232	\$0	\$0	\$0	\$0	\$0	\$648,232	11/1/2012	11/20/2014	1/29/2015	11/18/2016
E-17-JP	I-70 ML over Havana St.	1	19339	1	Bridge Replacement and Major Rehabilitation	\$86,567	\$0	\$0	\$1,675,000	\$1,761,567	\$24,351,102	\$120	\$0	\$500,000	\$24,851,102	\$26,612,669	11/26/2012	11/20/2014	4/13/2015	11/29/2016
F-16-ER	US 6 over Garrison	1	19478	1	Bridge Replacement and Major Rehabilitation	\$605,839	\$0	\$0	\$200,000	\$805,839	\$13,338,258	\$0	\$0	\$500,000	\$13,838,258	\$14,644,096	3/29/2013	7/3/2014	1/15/2015	4/30/2016
E-17-FX	Central 70	1	19631	1	Bridge Replacement and Major Rehabilitation	\$168,303,462	\$0	\$0	\$25,000,000	\$193,303,462	\$291,997,877	\$0	\$0	\$0	\$291,997,877	\$485,301,339	7/22/2013	2/6/2017	2/19/2018	2/28/2023
E-17-EW	Central 70	1	19631	1	Bridge Replacement and Major Rehabilitation	See E-17-FX	See E-17-FX	See E-17-FX	See E-17-FX	See E-17-FX	See E-17-FX	See E-17-FX	See E-17-FX	See E-17-FX	See E-17-FX	See E-17-FX	7/22/2013	2/6/2017	2/19/2018	2/28/2023
E-17-DF	Central 70	1	19631	1	Bridge Replacement and Major Rehabilitation	See E-17-FX	See E-17-FX	See E-17-FX	See E-17-FX	See E-17-FX	See E-17-FX	See E-17-FX	See E-17-FX	See E-17-FX	See E-17-FX	See E-17-FX	7/22/2013	2/6/2017	2/19/2018	2/28/2023
E-17-KR	Central 70	1	19631	1	Bridge Replacement and Major Rehabilitation	See E-17-FX	See E-17-FX	See E-17-FX	See E-17-FX	See E-17-FX	See E-17-FX	See E-17-FX	See E-17-FX	See E-17-FX	See E-17-FX	See E-17-FX	7/22/2013	2/6/2017	2/19/2018	2/28/2023
E-17-GA	Central 70	1	19631	1	Bridge Replacement and Major Rehabilitation	See E-17-FX	See E-17-FX	See E-17-FX	See E-17-FX	See E-17-FX	See E-17-FX	See E-17-FX	See E-17-FX	See E-17-FX	See E-17-FX	See E-17-FX	7/22/2013	2/6/2017	2/19/2018	2/28/2023
E-17-GB	Central 70	1	19631	1	Bridge Replacement and Major Rehabilitation	See E-17-FX	See E-17-FX	See E-17-FX	See E-17-FX	See E-17-FX	See E-17-FX	See E-17-FX	See E-17-FX	See E-17-FX	See E-17-FX	See E-17-FX	7/22/2013	2/6/2017	2/19/2018	2/28/2023
F-14-Y	I 70(BUSINESS RT) over I 70 ML	1	19984	1	Bridge Replacement and Major Rehabilitation	\$0	\$0	\$0	\$546,911	\$546,911	\$10,937,963	\$0	\$0	\$0	\$10,937,963	\$11,484,873	1/27/2014	3/6/2015	4/2/2015	6/27/2016
F-15-BL	I 70 WB over US 6, CLEAR CREEK- Floyd Hill	1	22716	1	Bridge Replacement and Major Rehabilitation	\$18,371,560	\$0	\$0	\$0	\$18,371,560	\$0	\$0	\$0	\$0	\$0	\$18,371,560	9/6/2018	2/27/2024		
F-15-BM	US ML over CLEAR CREEK- Floyd Hill	1	22716	1	Bridge Replacement and Major Rehabilitation	See F-15-BL	See F-15-BL	See F-15-BL	See F-15-BL	See F-15-BL	See F-15-BL.1	See F-15-BL	See F-15-BL	See F-15-BL	See F-15-BL	See F-15-BL	9/6/2018	2/27/2024		
F-15-D	I-70 FRONTAGE ROAD over CLEAR CREEK- Floyd Hill	1	22716	1	Bridge Replacement and Major Rehabilitation	See F-15-BL	See F-15-BL	See F-15-BL	See F-15-BL	See F-15-BL	See F-15-BL.1	See F-15-BL	See F-15-BL	See F-15-BL	See F-15-BL	See F-15-BL	9/6/2018	2/27/2024		
F-15-BL.1	I 70 WB over US 6, CLEAR CREEK- Floyd Hill (CP 3)	1	25800	0	Bridge Replacement and Major Rehabilitation	\$0	\$0	\$0	\$0	\$0	\$0	\$0	\$39,951,656	\$0	\$39,951,656	\$39,951,656			8/12/2024	6/30/2026
F-15-BM	US ML over CLEAR CREEK- Floyd Hill (CP 3)	1	25800	0	Bridge Replacement and Major Rehabilitation	See F-15-BL.1	See F-15-BL.1	See F-15-BL.1	See F-15-BL.1	See F-15-BL.1	See F-15-BL.1	See F-15-BL.1	See F-15-BL.1	See F-15-BL.1	See F-15-BL.1	See F-15-BL.1			8/12/2024	6/30/2026
F-15-BL.2	US ML over CLEAR CREEK- Floyd Hill (CP 4)	1	26169	0	Bridge Replacement and Major Rehabilitation	\$0	\$0	\$0	\$0	\$0	\$0	\$13,552,815	\$226,642,678	\$0	\$240,195,493	\$240,195,493	4/9/2025	5/2/2025		
F-15-BM	US ML over CLEAR CREEK- Floyd Hill (CP 4)	1	26169	0	Bridge Replacement and															

1: Infrastructure Revenue Bond Series 2024A, 2025A, and contemplated financings totaling \$450-\$500 million

2: Other funds made up of Federal, State, Local, Bank of America Loan, and 2010A Bonds Principal and Interest

Statewide Bridge and Tunnel Enterprise
Program Allocation Plan - Quarterly Update
As of June 30, 2025 (FY25 - Q4)

Original Bridge Key	Location/Project	Region	Project Accounting Number	Count	Project Type	Total Precon FASTER Funds	Total Precon SB-260 Funds	Precon Infrastructure Revenue Bonds ¹	Total Precon Other Funds ²	Total Precon Funds	Total Construction FASTER Funds	Total Construction SB-260	Construction Infrastructure Revenue Bonds ¹	Total Construction Other Funds ²	Total Construction Funds	Total Project Funds	Precon Start Date	Ad Date	Construction Start Date	Construction Completion Date
E-16-LU	I-76 WBND over CLEAR CREEK	1	22391	1	Bridge Replacement and Major Rehabilitation	\$660,150	\$0	\$0	\$0	\$660,150	\$2,837,863	\$0	\$0	\$0	\$2,837,863	\$3,498,013	11/19/2018	1/9/2020	6/1/2020	10/30/2020
E-16-LT	I-76 EBND over CLEAR CREEK	1	22391	1	Bridge Replacement and Major Rehabilitation	See E-16-LU	See E-16-LU	See E-16-LU	See E-16-LU	See E-16-LU	See E-16-LU	See E-16-LU	See E-16-LU	See E-16-LU	See E-16-LU	See E-16-LU	11/19/2018	1/9/2020	6/1/2020	10/30/2020
E-16-LU.1	I-76 WBND over CLEAR CRK SCOUR MITIGATE	1	23444	0	Bridge Replacement and Major Rehabilitation	\$407,105	\$0	\$0	\$0	\$407,105	\$2,935,738	\$0	\$0	\$0	\$2,935,738	\$3,342,843	11/24/2019	7/14/2022	11/8/2022	5/22/2025
E-16-LT	I-76 EBND over CLEAR CRK SCOUR MITIGATE	1	23444	0	Bridge Replacement and Major Rehabilitation	See E-16-LU.1	See E-16-LU.1	See E-16-LU.1	See E-16-LU.1	See E-16-LU.1	See E-16-LU.1	See E-16-LU.1	See E-16-LU.1	See E-16-LU.1	See E-16-LU.1	See E-16-LU.1	11/24/2019	7/14/2022	11/8/2022	5/22/2025
H-17-CH	South I-25 GAP CP 3	1	22927	1	Bridge Replacement and Major Rehabilitation	\$0	\$0	\$0	\$0	\$0	\$5,041,100	\$0	\$0	\$0	\$5,041,100	\$5,041,100		7/2/2019	8/7/2019	10/30/2022
H-17-CI	South I-25 GAP CP 3	1	22927	1	Bridge Replacement and Major Rehabilitation	See H-17-CH	See H-17-CH	See H-17-CH	See H-17-CH	See H-17-CH	See H-17-CH	See H-17-CH	See H-17-CH	See H-17-CH	See H-17-CH	See H-17-CH		7/2/2019	8/7/2019	8/30/2022
H-17-CF	South I-25 GAP CP 4	1	23477	1	Bridge Replacement and Major Rehabilitation	\$1,194,212	\$0	\$0	\$0	\$1,194,212	\$12,787,472	\$0	\$0	\$0	\$12,787,472	\$13,981,684	3/4/2020	12/15/2020	1/8/2021	11/23/2022
E-16-EW	SPEER BLVD. over I-25	1	22969	1	Bridge Replacement and Major Rehabilitation	\$1,919,746	\$4,000,000	\$0	\$0	\$5,919,746	\$0	\$60,000,000	\$0	\$0	\$60,000,000	\$65,919,746	3/23/2021			
E-16-EO	SPEER BLVD. over I-25	1	22969	1	Bridge Replacement and Major Rehabilitation	See E-16-EW	See E-16-EW	See E-16-EW	See E-16-EW	See E-16-EW	See E-16-EW	See E-16-EW	See E-16-EW	See E-16-EW	See E-16-EW	See E-16-EW	3/23/2021			
F-16-DA	23rd AVE over I-25	1	22969	1	Bridge Replacement and Major Rehabilitation	See E-16-EW	See E-16-EW	See E-16-EW	See E-16-EW	See E-16-EW	See E-16-EW	See E-16-EW	See E-16-EW	See E-16-EW	See E-16-EW	See E-16-EW	3/23/2021			
E-16-HE	I-70 over 32nd AVE EBND	1	23673	1	Bridge Replacement and Major Rehabilitation	\$1,761,093	\$0	\$0	\$0	\$1,761,093	\$13,872,546	\$0	\$0	\$0	\$13,872,546	\$15,633,639	11/25/2020	11/7/2021	2/14/2022	11/29/2023
E-16-HF	I-70 over 32nd AVE WBND	1	23673	1	Bridge Replacement and Major Rehabilitation	See E-16-HE	See E-16-HE	See E-16-HE	See E-16-HE	See E-16-HE	See E-16-HE	See E-16-HE	See E-16-HE	See E-16-HE	See E-16-HE	See E-16-HE	11/25/2020	11/7/2021	2/14/2022	11/29/2023
E-17-GW	I-76 over YORK ST.	1	23681	1	Bridge Replacement and Major Rehabilitation	\$589,981	\$0	\$0	\$0	\$589,981	\$12,595,057	\$0	\$0	\$0	\$12,595,057	\$13,185,037	5/14/2020	2/28/2022	5/31/2022	10/1/2024
E-17-GV	I-76 over YORK ST.	1	23681	1	Bridge Replacement and Major Rehabilitation	See E-17-GW	See E-17-GW	See E-17-GW	See E-17-GW	See E-17-GW	See E-17-GW	See E-17-GW	See E-17-GW	See E-17-GW	See E-17-GW	See E-17-GW	5/14/2020	2/28/2022	5/31/2022	10/1/2024
E-17-ID	I-270 Critical Bridges	1	24947	1	Bridge Replacement and Major Rehabilitation	\$10,000,000	\$0	\$0	\$0	\$10,000,000	\$20,000,000	\$20,000,000	\$100,000,000	\$0	\$140,000,000	\$150,000,000	9/16/2022	1/29/2027	3/1/2027	
E-17-IE	I-270 Critical Bridges	1	24947	1	Bridge Replacement and Major Rehabilitation	See E-17-ID	See E-17-ID	See E-17-ID	See E-17-ID	See E-17-ID	See E-17-ID	See E-17-ID	See E-17-ID	See E-17-ID	See E-17-ID	See E-17-ID	9/16/2022	1/29/2027	3/1/2027	
E-17-IF	I-270 Critical Bridges	1	24947	1	Bridge Replacement and Major Rehabilitation	See E-17-ID	See E-17-ID	See E-17-ID	See E-17-ID	See E-17-ID	See E-17-ID	See E-17-ID	See E-17-ID	See E-17-ID	See E-17-ID	See E-17-ID	9/16/2022	1/29/2027	3/1/2027	
E-17-IH	I-270 Critical Bridges	1	24947	1	Bridge Replacement and Major Rehabilitation	See E-17-ID	See E-17-ID	See E-17-ID	See E-17-ID	See E-17-ID	See E-17-ID	See E-17-ID	See E-17-ID	See E-17-ID	See E-17-ID	See E-17-ID	9/16/2022	1/29/2027	3/1/2027	
E-17-IG	I-270 Critical Bridges	1	24947	1	Bridge Replacement and Major Rehabilitation	See E-17-ID	See E-17-ID	See E-17-ID	See E-17-ID	See E-17-ID	See E-17-ID	See E-17-ID	See E-17-ID	See E-17-ID	See E-17-ID	See E-17-ID	9/16/2022	1/29/2027	3/1/2027	
E-17-IJ	I-270 Critical Bridges	1	24947	1	Bridge Replacement and Major Rehabilitation	See E-17-ID	See E-17-ID	See E-17-ID	See E-17-ID	See E-17-ID	See E-17-ID	See E-17-ID	See E-17-ID	See E-17-ID	See E-17-ID	See E-17-ID	9/16/2022	1/29/2027	3/1/2027	
E-17-IN	I-270 Corridor Phase 2	1	TBD	1	Bridge Replacement and Major Rehabilitation	\$0	\$8,000,000	\$0	\$0	\$8,000,000	\$20,000,000	\$36,000,000	\$0	\$0	\$56,000,000	\$64,000,000				
E-17-IC	I-270 Corridor Phase 2	1	TBD	1	Bridge Replacement and Major Rehabilitation	See E-17-IN	See E-17-IN	See E-17-IN	See E-17-IN	See E-17-IN	See E-17-IN	See E-17-IN	See E-17-IN	See E-17-IN	See E-17-IN	See E-17-IN				
E-17-AT	I-270 Corridor Phase 3	1	TBD	1	Bridge Replacement and Major Rehabilitation	\$0	\$6,000,000	\$0	\$0	\$6,000,000	\$0	\$62,000,000	\$0	\$0	\$62,000,000	\$68,000,000				
F-16-O	US 6 over SH 121 Wadsworth	1	26208	1	Bridge Replacement and Major Rehabilitation	\$0	\$0	\$0	\$0	\$0	\$25,000,000	\$0	\$0	\$0	\$25,000,000	\$25,000,000			4/1/2026	7/1/2028
Various	R1 BTE Bridge Scoping	1	26595	0	Bridge Replacement and Major Rehabilitation	\$168,000	\$0	\$0	\$0	\$168,000	\$0	\$0	\$0	\$0	\$0	\$168,000	1/21/2025			
F-20-BA	I-70E Bridges	1	27138	1	Bridge Replacement and Major Rehabilitation	\$0	\$0	\$0	\$0	\$0	\$3,308,866	\$0	\$0	\$0	\$3,308,866	\$3,308,866		7/10/2025	9/5/2025	10/31/2026
F-20-BB	I-70E Bridges	1	27138	1	Bridge Replacement and Major Rehabilitation	See F-20-BA	See F-20-BA	See F-20-BA	See F-20-BA	See F-20-BA	See F-20-BA	See F-20-BA	See F-20-BA	See F-20-BA	See F-20-BA	See F-20-BA		7/10/2025	9/5/2025	10/31/2026
L-22-F	SH 96 ML over Draw and Black Draw	2	17668	1	Bridge Replacement and Major Rehabilitation	\$757	\$0	\$0	\$149,300	\$150,057	\$205,306	\$0	\$0	\$3,561,371	\$3,766,677	\$3,916,734				
K-23-C	SH 96 ML over Draw and Black Draw	2	17668	1	Bridge Replacement and Major Rehabilitation	See L-22-F	See L-22-F	See L-22-F	See L-22-F	See L-22-F	See L-22-F	See L-22-F	See L-22-F	See L-22-F	See L-22-F	See L-22-F				
K-23-B	SH 96 ML over Draw and Black Draw	2	17668	1	Bridge Replacement and Major Rehabilitation	See L-22-F	See L-22-F	See L-22-F	See L-22-F	See L-22-F	See L-22-F	See L-22-F	See L-22-F	See L-22-F	See L-22-F	See L-22-F				
K-24-A	SH 96 ML over Draw and Black Draw	2	17668	1	Bridge Replacement and Major Rehabilitation	See L-22-F	See L-22-F	See L-22-F	See L-22-F	See L-22-F	See L-22-F	See L-22-F	See L-22-F	See L-22-F	See L-22-F	See L-22-F				
N-16-L	SH 69 over Turkey Creek	2	17669	1	Bridge Replacement and Major Rehabilitation	\$7,222	\$0	\$0	\$93,864	\$101,086	\$23,859	\$0	\$0	\$2,077,266	\$2,101,125	\$2,202,211				
H-16-K	US 24 EB over Fountain Creek, US 24 over Twin Creek and SH 67over Draw	2	17675	1	Bridge Replacement and Major Rehabilitation	\$0	\$0	\$0	\$219,669	\$219,669	\$0	\$0	\$0	\$2,418,297	\$2,418,297	\$2,637,966				
I-17-AE	US 24 EB over Fountain Creek, US 24 over Twin Creek and SH 67over Draw	2	17675	1	Bridge Replacement and Major Rehabilitation	See H-16-K	See H-16-K	See H-16-K	See H-16-K	See H-16-K	See H-16-K	See H-16-K	See H-16-K	See H-16-K	See H-16-K	See H-16-K				
I-15-Y	US 24 EB over Fountain Creek, US 24 over Twin Creek and SH 67over Draw	2	17675	1	Bridge Replacement and Major Rehabilitation	See H-16-K	See H-16-K	See H-16-K	See H-16-K	See H-16-K	See H-16-K	See H-16-K	See H-16-K	See H-16-K	See H-16-K	See H-16-K				
N-17-N	I-25 ML NB over Missouri Creek	2	18115	1	Bridge Replacement and Major Rehabilitation	\$0	\$0	\$0	\$0	\$0	\$1,725,376	\$0	\$0	\$0	\$1,725,376	\$1,725,376				
J-15-B	SH 9 ML over CURRANT CREEK	2	18059	1	Bridge Replacement and Major Rehabilitation	\$0	\$0	\$0	\$180,766	\$180,766	\$1	\$0	\$0	\$1,675,834	\$1,675,835	\$1,856,601	12/9/2010		5/4/2011	10/31/2011
L-28-F	SH 89 ML over ARKANSAS RIVER	2	18131	1	Bridge Replacement and Major Rehabilitation	\$63,267	\$0	\$0	\$177,535	\$240,802	\$0	\$0	\$0	\$6,129,155	\$6,129,155	\$6,369,957	6/1/2010	12/30/2010	2/16/2011	4/30/2012
G-12-L	SH9 ML over Buckskin Gulch	2	17681	1	Bridge Replacement and Major Rehabilitation	\$0	\$0	\$0	\$133,913	\$133,913	\$0	\$0	\$0	\$188,553	\$188,553	\$322,466	1/4/2010	6/9/2011	9/5/2011	12/29/2011
J-18-S	I 25 ML NBND over DRAW	2	18414	1	Bridge Replacement and Major Rehabilitation	\$0	\$0	\$0	\$0	\$0	\$0	\$0	\$0	\$1,043,384	\$1,043,384	\$1,043,384	9/1/2010	10/13/2011	2/20/2012	9/17/2012
J-18-T	I 25 ML NBND over DRAW	2	18414	1	Bridge Replacement and Major Rehabilitation	See J-18-S	See J-18-S	See J-18-S	See J-18-S	See J-18-S	See J-18-S	See J-18-S	See J-18-S	See J-18-S	See J-18-S	See J-18-S	9/1/2010	10/13/2011	2/20/2012	9/17/2012
K-16-K	SH 120 ML over RR, ARKANSAS RIVER	2	18013	1	Bridge Replacement and Major Rehabilitation	\$468,198	\$0	\$0	\$0	\$468,198	\$653,545	\$0	\$0	\$4,833,271	\$5,486,816	\$5,955,014	7/9/2010	5/25/2012	10/8/2012	6/27/2014
M-21-D	US 350 ML over DRAW	2	18177	1	Bridge Replacement and Major Rehabilitation	\$449,681	\$0	\$0	\$0	\$449,681	\$0	\$0	\$0	\$1,509,477	\$1,509,477	\$1,959,158	2/1/2011	8/25/2011	10/19/2011	5/18/2012
H-18-A	US 24 ML over BLACK SQUIRREL CREEK	2	18203	1	Bridge Replacement and Major Rehabilitation	\$288,894	\$0	\$0	\$0	\$288,894	\$0	\$0	\$0	\$2,993,733	\$2,993,733	\$3,282,627	6/1/2010	9/9/2011	11/15/2011	8/17/2012
O-16-A	CUCHARAS	2	18250	1	Bridge Replacement and Major Rehabilitation	\$176,063	\$0	\$0	\$0	\$176,063	\$0	\$0	\$0	\$0	\$0	\$176,063	12/1/2010			
P-17-H	SH 12 PURGATOIRE RIVER	2	18251	1	Bridge Replacement and Major Rehabilitation	\$150,662	\$0	\$0	\$0	\$150,662	\$0	\$0	\$0	\$0	\$0	\$150,662	12/1/2010			
O-16-A & P-17-H	CUCHARAS & SH 12 PURGATOIRE RIVER COMBINED CONST.	2	18640	0	Bridge Replacement and Major Rehabilitation	\$0	\$0	\$0	\$0	\$0	\$0	\$0	\$0	\$2,132,692	\$2,132,692	\$2,132,692	10/20/2011		2/24/2012	11/15/2012
O-26-L	US 160 ML over CAT. CREEK	2	18321	1	Bridge Replacement and Major Rehabilitation	\$340,422	\$0	\$0	\$868	\$341,291	\$12,034	\$0	\$0	\$3,543,166	\$3,555,200	\$3,896,491	2/1/2011	12/15/2011	3/29/2012	12/13/2012
O-25-I	US 160 ML over DRAW	2	18321	1	Bridge Replacement and Major Rehabilitation	See O-26-L	See O-26-L	See O-26-L	See O-26-L	See O-26-L	See O-26-L	See O-26-L	See O-26-L	See O-26-L	See O-26-L	See O-26-L	2/1/2011	12/15/2011	3/29/2012	12/13/2012
O-25-H	US 160 ML over N FK Sand Arroyo	2	18321	1	Bridge Replacement and Major Rehabilitation	See O-26-L	See O-26-L	See O-26-L	See O-26-L	See O-26-L	See O-26-L	See O-26-L	See O-26-L	See O-26-L	See O-26-L	See O-26-L	2/1/2011	12/15/2011	3/29/2012	12/13/2012
M-24-B	SH 101 ML over DRAW	2	18178	1	Bridge Replacement and Major Rehabilitation	\$268,899	\$0	\$0	\$0	\$268,899	\$0	\$0	\$0	\$0	\$0	\$268,899	2/1/2011			
L-24-F	SH 101 ML over Purgatoire River - R2	2	18435	1	Bridge Replacement and Major Rehabilitation	\$0	\$0	\$0	\$132,413	\$132,413	\$0	\$0	\$0	\$0	\$0	\$132,413	2/1/2011			
M-24-B & L-24-F	COMBINED CONST. SH 101 ML over DRAW and over PURGATOIRE RIVER	2	18722	0	Bridge Replacement and Major Rehabilitation	\$0	\$0	\$0	\$0	\$0	\$0	\$0	\$0	\$3,731,491	\$3,731,491	\$3,731,491		11/23/2011	3/29/2012	10/31/2012
L-22-O	SH 266 ML over HOLBROOK CANAL	2	18179	1	Bridge Replacement and Major Rehabilitation	\$722,726	\$0	\$0	\$0	\$722,726	\$0	\$0	\$0	\$0	\$0	\$722,726	12/1/2010			
L-22-E	FT. LYON STORAGE CANAL	2	18179	1	Bridge Replacement and Major Rehabilitation	See L-22-O	See L-22-O	See L-22-O	See L-22-O	See L-22-O	See L-22-O	See L-22-O	See L-22-O	See L-22-O	See L-22-O	See L-22-O	12/1/2010			
L-22-K	SH 71 ML over FT. LYON CANAL	2	18440	1	Bridge Replacement and Major Rehabilitation	\$200	\$0	\$0	\$0	\$743,798	\$743,798	\$0	\$0	\$0	\$0	\$743,798	7/15/2011			

1: Infrastructure Revenue Bond Series 2024A, 2025A, and contemplated financings totaling \$450-\$500 million
2: Other funds made up of Federal, State, Local, Bank of America Loan, and 2010A Bonds Principal and Interest

Statewide Bridge and Tunnel Enterprise
Program Allocation Plan - Quarterly Update
As of June 30, 2025 (FY25 - Q4)

Original Bridge Key	Location/Project	Region	Project Accounting Number	Count	Project Type	Total Precon FASTER Funds	Total Precon SB-260 Funds	Precon Infrastructure Revenue Bonds ¹	Total Precon Other Funds ²	Total Precon Funds	Total Construction FASTER Funds	Total Construction SB-260	Construction Infrastructure Revenue Bonds ¹	Total Construction Other Funds ²	Total Construction Funds	Total Project Funds	Precon Start Date	Ad Date	Construction Start Date	Construction Completion Date	
L-22-O, E & K	COMBINED CONST. HOLBROOK & FT. LYON CANAL & STORAGE CANAL	2	18627	0	Bridge Replacement and Major Rehabilitation	\$0	\$0	\$0	\$799,497	\$799,497	\$32,953	\$0	\$0	\$5,486,885	\$5,519,838	\$6,319,334	9/22/2011		8/20/2012	3/7/2013	
L-28-C	US 50 ML over BNSF RR	2	18155	1	Bridge Replacement and Major Rehabilitation	\$1,553,259	\$0	\$0	\$106,079	\$1,659,338	\$6,166,545	\$0	\$0	\$1	\$6,166,546	\$7,825,884	2/1/2011	7/17/2014	2/23/2015	7/1/2016	
L-27-S	US 50 ML over DRAW	2	18155	1	Bridge Replacement and Major Rehabilitation	See L-28-C	See L-28-C	See L-28-C	See L-28-C	See L-28-C	See L-28-C	See L-28-C	See L-28-C	See L-28-C	See L-28-C	See L-28-C	2/1/2011	7/17/2014	2/23/2015	7/1/2016	
O-19-J	US 350 ML over DRAW	2	18461	1	Bridge Replacement and Major Rehabilitation	\$0	\$0	\$0	\$299,217	\$299,217	\$0	\$0	\$0	\$2,105,844	\$2,105,844	\$2,405,061	10/15/2010	9/20/2012	12/3/2012	6/18/2013	
P-19-AD	SH 239 ML OVER IRRIGATION CANAL	2	18461	1	Bridge Replacement and Major Rehabilitation	See O-19-J	See O-19-J	See O-19-J	See O-19-J	See O-19-J	See O-19-J	See O-19-J	See O-19-J	See O-19-J	See O-19-J	See O-19-J	10/15/2010	9/20/2012	12/3/2012	6/18/2013	
O-19-H	US 350 ML over PURGATOIRE RIVER	2	18208	1	Bridge Replacement and Major Rehabilitation	\$493,712	\$0	\$0	\$0	\$493,712	\$34,143	\$0	\$0	\$3,153,661	\$3,187,804	\$3,681,516	10/15/2010	2/21/2013	4/29/2013	4/11/2014	
K-16-S	SH 120 ML over DRAW, UP RR	2	18370	1	Bridge Replacement and Major Rehabilitation	\$505,078	\$0	\$0	\$755,829	\$1,260,907	\$4,106,291	\$0	\$0	\$312,427	\$4,418,718	\$5,679,626	3/15/2011	6/19/2014	10/28/2014	1/8/2016	
L-18-M & L-18-W	I-25 ML over Indiana Ave.	2	19206	0	Bridge Replacement and Major Rehabilitation	\$123,988	\$0	\$0	\$108,191	\$232,179	\$0	\$0	\$0	\$0	\$0	\$232,179	10/15/2012				
L-18-AQ	Northern Ave. over I-25 ML	2	19207	0	Bridge Replacement and Major Rehabilitation	\$132,619	\$0	\$0	\$2,000	\$134,619	\$0	\$0	\$0	\$0	\$0	\$134,619	10/15/2012				
K-18-CK	I-25 over Ilex, RR, Bennet	2	19205	1	Bridge Replacement and Major Rehabilitation	\$0	\$0	\$0	\$0	\$0	\$58,208,838	\$0	\$0	\$1,462,740	\$59,671,578	\$59,671,578		3/6/2014	2/10/2015	7/31/2019	
K-18-CL	I-25 over Ilex, RR, Bennet	2	19205	1	Bridge Replacement and Major Rehabilitation	See K-18-CK	See K-18-CK	See K-18-CK	See K-18-CK	See K-18-CK	See K-18-CK	See K-18-CK	See K-18-CK	See K-18-CK	See K-18-CK	See K-18-CK		3/6/2014	2/10/2015	7/31/2019	
L-18-M	I-25 ML over Indiana Ave.	2	19205	1	Bridge Replacement and Major Rehabilitation	See K-18-CK	See K-18-CK	See K-18-CK	See K-18-CK	See K-18-CK	See K-18-CK	See K-18-CK	See K-18-CK	See K-18-CK	See K-18-CK	See K-18-CK		3/6/2014	4/1/2015	9/7/2017	
L-18-W	I-25 ML over Indiana Ave.	2	19205	1	Bridge Replacement and Major Rehabilitation	See K-18-CK	See K-18-CK	See K-18-CK	See K-18-CK	See K-18-CK	See K-18-CK	See K-18-CK	See K-18-CK	See K-18-CK	See K-18-CK	See K-18-CK		3/6/2014	4/1/2015	9/7/2027	
L-18-AQ	Northern Ave. over I-25 ML	2	19205	1	Bridge Replacement and Major Rehabilitation	See K-18-CK	See K-18-CK	See K-18-CK	See K-18-CK	See K-18-CK	See K-18-CK	See K-18-CK	See K-18-CK	See K-18-CK	See K-18-CK	See K-18-CK		3/6/2014	4/1/2015	1/17/2019	
L-18-AU	Mesa Ave over I-25 ML	2	19205	1	Bridge Replacement and Major Rehabilitation	See K-18-CK	See K-18-CK	See K-18-CK	See K-18-CK	See K-18-CK	See K-18-CK	See K-18-CK	See K-18-CK	See K-18-CK	See K-18-CK	See K-18-CK		3/6/2014	4/1/2015	7/21/2017	
K-18-AX	I-25 ML NBND over US 50 ML	2	19205	1	Bridge Replacement and Major Rehabilitation	See K-18-CK	See K-18-CK	See K-18-CK	See K-18-CK	See K-18-CK	See K-18-CK	See K-18-CK	See K-18-CK	See K-18-CK	See K-18-CK	See K-18-CK		3/6/2014	2/10/2015	10/1/2018	
K-18-R	US 50 BUS EBND over Arkansas River	2	19205	1	Bridge Replacement and Major Rehabilitation	See K-18-CK	See K-18-CK	See K-18-CK	See K-18-CK	See K-18-CK	See K-18-CK	See K-18-CK	See K-18-CK	See K-18-CK	See K-18-CK	See K-18-CK		3/6/2014	2/10/2015	1/17/2019	
K-18-CL	I-25 over Ilex, RR, Bennet	2	17666	0	Bridge Replacement and Major Rehabilitation	\$599,222	\$0	\$0	\$9,456,285	\$10,055,506	\$0	\$0	\$0	\$0	\$0	\$10,055,506	6/1/2011			5/21/2014	
K-18-CK	I-25 over Ilex, RR, Bennet	2	17666	0	Bridge Replacement and Major Rehabilitation	See K-18-CL	See K-18-CL	See K-18-CL	See K-18-CL	See K-18-CL	See K-18-CL	See K-18-CL	See K-18-CL	See K-18-CL	See K-18-CL	See K-18-CL		6/1/2011			5/21/2014
I-17-O	I-25 Frontage Road over Pine Creek	2	19123	1	Bridge Replacement and Major Rehabilitation	\$0	\$0	\$0	\$168,125	\$168,125	\$0	\$0	\$0	\$0	\$0	\$168,125	10/15/2012			9/11/2013	
K-14-J	US50 ML over Draw Cotopaxi-Texas Creek	2	19304	1	Bridge Replacement and Major Rehabilitation	\$0	\$0	\$0	\$342,596	\$342,596	\$1,452,992	\$0	\$0	\$0	\$1,452,992	\$1,795,588	10/30/2012	6/12/2014	3/1/2015	8/15/2015	
M-16-P	SH69 ML over Milligan Arroyo	2	19055	1	Bridge Replacement and Major Rehabilitation	\$3,460	\$0	\$0	\$385,840	\$389,300	\$0	\$0	\$0	\$0	\$0	\$389,300	12/19/2012	3/1/2018	5/29/2018	6/26/2019	
M-16-P	SH69 ML over Milligan Arroyo	2	22320	1	Bridge Replacement and Major Rehabilitation	\$37,260	\$0	\$0	\$0	\$37,260	\$3,598,764	\$0	\$0	\$0	\$3,598,764	\$3,636,024	12/19/2012	3/1/2018	5/29/2018	6/26/2019	
N-17-C	I-25 Bus Route over Sull Creek	2	19054	1	Bridge Replacement and Major Rehabilitation	\$3,876	\$0	\$0	\$558,109	\$561,985	\$0	\$0	\$0	\$1,910,242	\$1,910,242	\$2,472,227	12/19/2012	10/24/2013	2/17/2014	9/3/2014	
P-23-A	SH160 ML over Smith Canyon	2	19053	1	Bridge Replacement and Major Rehabilitation	\$0	\$0	\$0	\$373,691	\$373,691	\$1,775,780	\$0	\$0	\$0	\$1,775,780	\$2,149,471	12/19/2012	2/5/2015	5/26/2015	10/30/2015	
L-22-L	SH71 over ARKANSAS RIVER	2	21012	1	Bridge Replacement and Major Rehabilitation	\$254,704	\$0	\$0	\$0	\$254,704	\$6,517,636	\$0	\$0	\$0	\$6,517,636	\$6,772,340	5/13/2015	8/30/2018	12/10/2018	11/15/2019	
K-17-F	SH 96 over Rush Creek	2	21011	1	Bridge Replacement and Major Rehabilitation	\$344,896	\$0	\$0	\$0	\$344,896	\$2,275,375	\$0	\$0	\$0	\$2,275,375	\$2,620,272	7/29/2015	3/29/2018	7/16/2018	12/14/2018	
N-17-BN	I-25 over CO RD640, Butte Creek	2	20407	1	Bridge Replacement and Major Rehabilitation	\$541,169	\$0	\$0	\$0	\$541,169	\$9,229,247	\$0	\$0	\$0	\$9,229,247	\$9,770,416	10/23/2017	8/3/2018	10/15/2018	12/8/2020	
N-17-S	I-25 over CO RD 103, Butte Creek	2	20407	1	Bridge Replacement and Major Rehabilitation	See N-17-BN	See N-17-BN	See N-17-BN	See N-17-BN	See N-17-BN	See N-17-BN	See N-17-BN	See N-17-BN	See N-17-BN	See N-17-BN	See N-17-BN	10/23/2017	8/3/2018	10/15/2018	12/8/2020	
N-17-AD	I-25 over US 160 ML, RR Spur	2	22350	1	Bridge Replacement and Major Rehabilitation	\$1,698,520	\$0	\$0	\$0	\$1,698,520	\$26,437,439	\$0	\$0	\$0	\$26,437,439	\$28,135,959	11/6/2017	10/20/2022	3/23/2023	10/30/2024	
N-17-AD	Stacy Park Playground in Walsenburg	2	26891	0	Bridge Replacement and Major Rehabilitation	\$135,000	\$0	\$0	\$0	\$135,000	\$0	\$0	\$0	\$0	\$0	\$135,000					
K-18-U	I-25 SB over Draw	2	22823	1	Bridge Replacement and Major Rehabilitation	\$102,980	\$0	\$0	\$0	\$102,980	\$2,531,140	\$0	\$0	\$0	\$2,531,140	\$2,634,121	11/5/2018	12/5/2019	4/7/2020	10/30/2020	
H-13-G	US 285 over South Fork South Platte River	2	22865	1	Bridge Replacement and Major Rehabilitation	\$473,405	\$0	\$0	\$0	\$473,405	\$4,422,126	\$0	\$0	\$0	\$4,422,126	\$4,895,531	1/1/2019	3/16/2021	6/13/2022	12/9/2022	
M-22-N	SH 71 over HIGHLINE CANAL	2	23005	1	Bridge Replacement and Major Rehabilitation	\$333,686	\$0	\$0	\$0	\$333,686	\$1,667,723	\$0	\$0	\$0	\$1,667,723	\$2,001,410	6/1/2019	5/7/2020	2/23/2021	11/30/2021	
M-24-A	SH 101 over DRAW	2	23006	1	Bridge Replacement and Major Rehabilitation	\$235,942	\$0	\$0	\$0	\$235,942	\$2,457,119	\$0	\$0	\$0	\$2,457,119	\$2,693,061	6/1/2019	7/31/2020	11/2/2020	5/5/2021	
M-24-I	SH 101 over DRAW	2	23007	1	Bridge Replacement and Major Rehabilitation	\$190,050	\$0	\$0	\$0	\$190,050	\$0	\$0	\$0	\$0	\$0	\$190,050	6/1/2019	5/7/2020	9/17/2020	3/4/2021	
H-19-C	US 24 over DRAW	2	22995	1	Bridge Replacement and Major Rehabilitation	\$215,998	\$0	\$0	\$0	\$215,998	\$1,883,031	\$0	\$0	\$0	\$1,883,031	\$2,099,029	3/29/2019	10/1/2020	1/1/2021	9/30/2021	
I-17-GR	I-25 SB over S. ACADEMY BLVD.	2	23605	1	Bridge Replacement and Major Rehabilitation	\$1,541,172	\$0	\$0	\$0	\$1,541,172	\$24,527,474	\$0	\$0	\$1	\$24,527,475	\$26,068,647	10/1/2019	1/14/2021	11/29/2021	8/26/2024	
I-17-GQ	I-25 NB over S. ACADEMY BLVD.	2	23605	1	Bridge Replacement and Major Rehabilitation	See I-17-GR	See I-17-GR	See I-17-GR	See I-17-GR	See I-17-GR	See I-17-GR	See I-17-GR	See I-17-GR	See I-17-GR	See I-17-GR	See I-17-GR		10/1/2019	1/14/2021	11/29/2021	8/26/2024
G-12-C	R2 CHBP Grant (R2B2)	2	23558	1	Bridge Replacement and Major Rehabilitation	\$524,426	\$0	\$0	\$1,885,292	\$2,409,718	\$33,891,467	\$0	\$0	\$10,589,708	\$44,481,175	\$46,890,894	8/19/2020	7/31/2020	4/18/2022	1/22/2025	
H-13-N	R2 CHBP Grant (R2B2)	2	23558	1	Bridge Replacement and Major Rehabilitation	See G-12-C	See G-12-C	See G-12-C	See G-12-C	See G-12-C	See G-12-C	See G-12-C	See G-12-C	See G-12-C	See G-12-C	See G-12-C		8/19/2020	7/31/2020	4/18/2022	1/22/2025
I-13-G	R2 CHBP Grant (R2B2)	2	23558	1	Bridge Replacement and Major Rehabilitation	See G-12-C	See G-12-C	See G-12-C	See G-12-C	See G-12-C	See G-12-C	See G-12-C	See G-12-C	See G-12-C	See G-12-C	See G-12-C		8/19/2020	7/31/2020	4/18/2022	1/22/2025
J-15-AD	R2 CHBP Grant (R2B2)	2	23558	1	Bridge Replacement and Major Rehabilitation	See G-12-C	See G-12-C	See G-12-C	See G-12-C	See G-12-C	See G-12-C	See G-12-C	See G-12-C	See G-12-C	See G-12-C	See G-12-C		8/19/2020	7/31/2020	4/18/2022	1/22/2025
I-15-T	R2 CHBP Grant (R2B2)	2	23558	1	Bridge Replacement and Major Rehabilitation	See G-12-C	See G-12-C	See G-12-C	See G-12-C	See G-12-C	See G-12-C	See G-12-C	See G-12-C	See G-12-C	See G-12-C	See G-12-C		8/19/2020	7/31/2020	4/18/2022	1/22/2025
J-14-C	R2 CHBP Grant (R2B2)	2	23558	1	Bridge Replacement and Major Rehabilitation	See G-12-C	See G-12-C	See G-12-C	See G-12-C	See G-12-C	See G-12-C	See G-12-C	See G-12-C	See G-12-C	See G-12-C	See G-12-C		8/19/2020	7/31/2020	4/18/2022	1/22/2025
J-15-G	R2 CHBP Grant (R2B2)	2	23558	1	Bridge Replacement and Major Rehabilitation	See G-12-C	See G-12-C	See G-12-C	See G-12-C	See G-12-C	See G-12-C	See G-12-C	See G-12-C	See G-12-C	See G-12-C	See G-12-C		8/19/2020	7/31/2020	4/18/2022	1/22/2025
M-21-B	R2 CHBP Grant (R2B2)	2	23558	1	Bridge Replacement and Major Rehabilitation	See G-12-C	See G-12-C	See G-12-C	See G-12-C	See G-12-C	See G-12-C	See G-12-C	See G-12-C	See G-12-C	See G-12-C	See G-12-C		8/19/2020	7/31/2020	4/18/2022	1/22/2025
M-21-C	R2 CHBP Grant (R2B2)	2	23558	1	Bridge Replacement and Major Rehabilitation	See G-12-C	See G-12-C	See G-12-C	See G-12-C	See G-12-C	See G-12-C	See G-12-C	See G-12-C	See G-12-C	See G-12-C	See G-12-C		8/19/2020	7/31/2020	4/18/2022	1/22/2025
M-21-J	R2 CHBP Grant (R2B2)	2	23558	1	Bridge Replacement and Major Rehabilitation	See G-12-C	See G-12-C	See G-12-C	See G-12-C	See G-12-C	See G-12-C	See G-12-C	See G-12-C	See G-12-C	See G-12-C	See G-12-C		8/19/2020	7/31/2020	4/18/2022	1/22/2025
M-22-U	R2 CHBP Grant (R2B2)	2	23558	1	Bridge Replacement and Major Rehabilitation	See G-12-C	See G-12-C	See G-12-C	See G-12-C	See G-12-C	See G-12-C	See G-12-C	See G-12-C	See G-12-C	See G-12-C	See G-12-C		8/19/2020	7/31/2020	4/18/2022	1/22/2025
M-22-Y	R2 CHBP Grant (R2B2)	2	23558	1	Bridge Replacement and Major Rehabilitation	See G-12-C	See G-12-C	See G-12-C	See G-12-C	See G-12-C	See G-12-C	See G-12-C	See G-12-C	See G-12-C	See G-12-C	See G-12-C		8/19/2020	7/31/2020	4/18/2022	1/22/2025
N-21-C	R2 CHBP Grant (R2B2)	2	23558	1	Bridge Replacement and Major Rehabilitation	See G-12-C	See G-12-C	See G-12-C	See G-12-C	See G-12-C	See G-12-C	See G-12-C	See G-12-C	See G-12-C	See G-12-C	See G-12-C		8/19/2020	7/31/2020	4/18/2022	1/22/2025
N-21-F	R2 CHBP Grant (R2B2)	2	23558	1	Bridge Replacement and Major Rehabilitation	See G-12-C	See G-12-C	See G-12-C	See G-12-C	See G-12-C	See G-12-C	See G-12-C	See G-12-C	See G-12-C	See G-12-C	See G-12-C		8/19/2020	7/31/2020	4/18/2022	1/22/2025
I-13-H	R2 Non-Grant	2	23559	1	Bridge Replacement and Major Rehabilitation	\$788,320	\$0	\$0	\$0	\$788,320	\$9,737,310	\$0	\$0	\$0	\$9,737,310	\$10,525,630					

Statewide Bridge and Tunnel Enterprise
Program Allocation Plan - Quarterly Update
As of June 30, 2025 (FY25 - Q4)

Original Bridge Key	Location/Project	Region	Project Accounting Number	Count	Project Type	Total Precon FASTER Funds	Total Precon SB-260 Funds	Precon Infrastructure Revenue Bonds ¹	Total Precon Other Funds ²	Total Precon Funds	Total Construction FASTER Funds	Total Construction SB-260	Construction Infrastructure Revenue Bonds ¹	Total Construction Other Funds ²	Total Construction Funds	Total Project Funds	Precon Start Date	Ad Date	Construction Start Date	Construction Completion Date	
H-13-A	US 285 at SH 9	2	24052	1	Bridge Replacement and Major Rehabilitation	\$0	\$0	\$0	\$0	\$0	\$6,532,905	\$0	\$0	\$0	\$6,532,905	\$6,532,905		2/24/2022	5/1/2023	11/1/2024	
K-18-J	I-25/US 50 Interchange (New Pueblo Freeway)	2	26237	1	Bridge Replacement and Major Rehabilitation	\$0	\$0	\$0	\$0	\$0	\$0	\$0	\$42,967,711	\$0	\$42,967,711	\$42,967,711		6/27/2024	8/1/2024	1/31/2027	
K-18-L	I-25/US 50 Interchange (New Pueblo Freeway)	2	26237	1	Bridge Replacement and Major Rehabilitation	See K-18-J	See K-18-J	See K-18-J	See K-18-J	See K-18-J	See K-18-J	See K-18-J	See K-18-J	See K-18-J	See K-18-J	See K-18-J		6/27/2024	8/1/2024	1/31/2027	
J-18-M	US 85 over Fountain Creek	2	26461	1	Bridge Replacement and Major Rehabilitation	\$2,000,100	\$0	\$0	\$0	\$2,000,100	\$0	\$0	\$0	\$0	\$0	\$2,000,100		5/1/2024	10/31/2026		
N-17-AC	I-25 over US160 Walsenburg	2	26288	1	Bridge Replacement and Major Rehabilitation	\$500,400	\$1,000,000	\$0	\$0	\$1,500,400	\$20,000,000	\$11,000,000	\$0	\$0	\$31,000,000	\$32,500,400		11/4/2024	8/6/2026		
K-18-AD	CO 96 Critical Bridges Replacement	2	26289	1	Bridge Replacement and Major Rehabilitation	\$189,999	\$0	\$0	\$1,800,001	\$1,990,000	\$0	\$0	\$0	\$0	\$0	\$1,990,000					
K-18-BT	CO 96 Critical Bridges Replacement	2	26289	1	Bridge Replacement and Major Rehabilitation	See K-18-AD	See K-18-AD	See K-18-AD	See K-18-AD	See K-18-AD	See K-18-AD	See K-18-AD	See K-18-AD	See K-18-AD	See K-18-AD	See K-18-AD					
G-11-F	US 24 ML over UPRR	3	17672	1	Bridge Replacement and Major Rehabilitation	\$3,500	\$0	\$0	\$409,711	\$413,211	\$350,000	\$0	\$0	\$5,279,983	\$5,629,983	\$6,043,193					
F-09-H	US 6 ML over EAGLE RIVER	3	18160	1	Bridge Replacement and Major Rehabilitation	\$150,986	\$0	\$0	\$155,656	\$306,642	\$0	\$0	\$0	\$4,201,213	\$4,201,213	\$4,507,855	9/28/2010	5/19/2011	7/20/2011	5/18/2012	
J-09-C	US 50 SERVICE RD over GUNNISON RVR SR	3	18193	1	Bridge Replacement and Major Rehabilitation	\$0	\$0	\$0	\$347,098	\$347,098	\$0	\$0	\$0	\$2,369,188	\$2,369,188	\$2,716,286	6/1/2010	6/23/2011	8/29/2011	8/31/2012	
J-09-D	US 50 SERVICE RD over GUNNISON RVR SR	3	18193	1	Bridge Replacement and Major Rehabilitation	See J-09-C	See J-09-C	See J-09-C	See J-09-C	See J-09-C	See J-09-C	See J-09-C	See J-09-C	See J-09-C	See J-09-C	See J-09-C		6/1/2010	6/23/2011	8/29/2011	8/31/2012
F-08-F	I 70 SERVICE RD over COLORADO RIVER SR	3	18162	1	Bridge Replacement and Major Rehabilitation	\$0	\$0	\$0	\$1,952,566	\$1,952,566	\$0	\$0	\$0	\$7,966,405	\$7,966,405	\$9,918,970	4/6/2011	9/2/2012	9/4/2012	9/30/2013	
F-08-F	Historic Eagle County Bridges Book	3	19325	0	Bridge Replacement and Major Rehabilitation	\$22,062	\$0	\$0	\$0	\$22,062	\$0	\$0	\$0	\$0	\$0	\$22,062	1/0/1900	1/0/1900	1/0/1900	1/0/1900	
C-09-C	US 40 ML over E FORK ELK RIVER	3	18138	1	Bridge Replacement and Major Rehabilitation	\$0	\$0	\$0	\$1,517,178	\$1,517,178	\$0	\$0	\$0	\$4,117,918	\$4,117,918	\$5,635,096	4/1/2011	12/13/2012	2/28/2013	11/19/2013	
F-11-AC	I 70 ML EBND over US 6, RR, EAGLE RIVER	3	18159	1	Bridge Replacement and Major Rehabilitation	\$0	\$0	\$0	\$1,779,324	\$1,779,324	\$12,457,996	\$0	\$0	\$500,000	\$12,957,996	\$14,737,320	4/1/2011	3/6/2014	7/19/2014	5/5/2017	
F-11-AB	I 70 ML WBND over US 6, RR, EAGLE RIVER	3	18159	1	Bridge Replacement and Major Rehabilitation	See F-11-AC	See F-11-AC	See F-11-AC	See F-11-AC	See F-11-AC	See F-11-AC	See F-11-AC	See F-11-AC	See F-11-AC	See F-11-AC	See F-11-AC		4/1/2011	3/6/2014	7/19/2014	5/5/2017
F-07-A	SH 82 ML over I70 ML,COLORADO RVR,RR	3	18158	1	Bridge Replacement and Major Rehabilitation	\$30,684,256	\$0	\$0	\$10,612,924	\$41,297,179	\$57,561,362	\$0	\$0	\$1,853,821	\$59,415,183	\$100,712,362	5/11/2011	7/1/2015	1/1/2016	10/30/2018	
	PEDESTRIAN BRIDGE over COLORADO RVR	3	21122	0	Bridge Replacement and Major Rehabilitation	\$0	\$0	\$0	\$0	\$0	\$9,298,894	\$0	\$0	\$5,492,960	\$14,791,854	\$14,791,854	5/11/2011	7/1/2015	1/1/2016	10/30/2018	
D-13-A	US 34 over NORTH FORK COLORADO RIVER	3	21010	1	Bridge Replacement and Major Rehabilitation	\$872,718	\$0	\$0	\$0	\$872,718	\$5,954,412	\$0	\$0	\$0	\$5,954,412	\$6,827,129	6/8/2017	11/7/2018	4/1/2019	9/15/2020	
F-05-L	I-70 WBND over Colorado River	3	21007	1	Bridge Replacement and Major Rehabilitation	\$26,919	\$0	\$0	\$231,182	\$258,101	\$0	\$0	\$0	\$0	\$0	\$258,101	8/12/2015	2/1/2018	4/2/2018	12/15/2018	
F-05-L	I-70 WBND over Colorado River	3	22359	0	Bridge Replacement and Major Rehabilitation	\$40,876	\$0	\$0	\$0	\$40,876	\$3,077,349	\$0	\$0	\$0	\$3,077,349	\$3,118,225	8/12/2015	2/1/2018	4/2/2018	12/15/2018	
F-10-L	I-70 EBND over US6,RR, Eagle River	3	21008	1	Bridge Replacement and Major Rehabilitation	\$26,104	\$0	\$0	\$225,184	\$251,288	\$0	\$0	\$0	\$0	\$0	\$251,288	8/12/2015	1/11/2018	3/16/2018	8/20/2018	
F-10-L	I-70 EBND over US6,RR, Eagle River	3	22360	0	Bridge Replacement and Major Rehabilitation	\$50,226	\$0	\$0	\$0	\$50,226	\$3,145,365	\$0	\$0	\$0	\$3,145,365	\$3,195,591	8/12/2015	1/11/2018	3/16/2018	8/20/2018	
G-03-Q	I-70 WBND over Colorado River Overflow	3	21009	1	Bridge Replacement and Major Rehabilitation	\$47,567	\$0	\$0	\$410,959	\$458,526	\$0	\$0	\$0	\$0	\$0	\$458,526	8/12/2015	1/4/2018	3/26/2018	8/15/2018	
G-03-Q	I-70 WBND over Colorado River Overflow	3	22170	0	Bridge Replacement and Major Rehabilitation	\$63,961	\$0	\$0	\$0	\$63,961	\$3,200,030	\$0	\$0	\$0	\$3,200,030	\$3,263,991	8/12/2015	1/4/2018	3/26/2018	8/15/2018	
F-09-K	US 6 ML over CASTLE CREEK	3	22576	1	Bridge Replacement and Major Rehabilitation	\$44,910	\$0	\$0	\$0	\$44,910	\$3,824,079	\$0	\$0	\$0	\$3,824,079	\$3,868,988	7/1/2019	5/2/2019	7/22/2019	12/14/2019	
F-13-S_Minor	I-70 over FOREST SERVICE ROAD	3	22712	1	Bridge Replacement and Major Rehabilitation	\$1,843,854	\$0	\$0	\$0	\$1,843,854	\$14,470,575	\$0	\$0	\$0	\$14,470,575	\$16,314,429	8/9/2018	2/10/2021	4/28/2021	7/22/2022	
I-05-V	SH 92 ML over GUNNISON RIVER	3	22943	1	Bridge Replacement and Major Rehabilitation	\$834,536	\$0	\$0	\$0	\$834,536	\$12,723,532	\$0	\$0	\$0	\$12,723,532	\$13,558,068	3/18/2019	10/22/2020	11/4/2021	2/4/2023	
D-04-G	SH 64 over STRAWBERRY CREEK	3	23061	1	Bridge Replacement and Major Rehabilitation	\$594,125	\$0	\$0	\$0	\$594,125	\$13,746,068	\$0	\$0	\$0	\$13,746,068	\$14,340,194	7/1/2019	9/30/2022	3/20/2023	6/4/2024	
D-03-A	SH 64 over WHITE RIVER	3	23061	1	Bridge Replacement and Major Rehabilitation	See D-04-G	See D-04-G	See D-04-G	See D-04-G	See D-04-G	See D-04-G	See D-04-G	See D-04-G	See D-04-G	See D-04-G	See D-04-G		7/1/2019	9/30/2022	3/20/2023	6/4/2024
F-11-AD	I-70 over US 6,US 24, RR, EAGLE RIVER	3	23217	1	Bridge Replacement and Major Rehabilitation	\$435,013	\$0	\$0	\$0	\$435,013	\$0	\$0	\$0	\$0	\$0	\$435,013	7/1/2019			11/30/2020	
F-12-AS/AT	I-70 VAIL PASS Design	3	23929	0	Bridge Replacement and Major Rehabilitation	\$6,887,500	\$0	\$0	\$0	\$6,887,500	\$0	\$0	\$0	\$0	\$0	\$6,887,500	12/1/2020			1/5/2024	
F-12-AS	I-70 EBND VAIL PASS	3	24896	1	Bridge Replacement and Major Rehabilitation	\$0	\$0	\$0	\$0	\$0	\$7,934,573	\$0	\$45,445,516	\$0	\$53,380,089	\$53,380,089	1/8/2024	4/22/2024		11/30/2026	
F-12-AT	I-70 WBND VAIL PASS	3	24894	1	Bridge Replacement and Major Rehabilitation	\$0	\$0	\$0	\$0	\$0	\$25,385,379	\$22,957,340	\$0	\$0	\$48,342,719	\$48,342,719		12/1/2020	6/27/2022	8/12/2022	7/31/2024
F-06-A	US 6 over Elk Creek	3	24493	1	Bridge Replacement and Major Rehabilitation	\$2,837,620	\$0	\$0	\$0	\$2,837,620	\$13,232,114	\$0	\$0	\$0	\$13,232,114	\$16,069,734	6/27/2022	7/15/2025	10/15/2025	10/30/2026	
C-08-A_Minor	US 40 Over Shelton Ditch near Hayden	3	26274	1	Bridge Replacement and Major Rehabilitation	\$445,800	\$0	\$0	\$0	\$445,800	\$0	\$3,500,000	\$0	\$0	\$3,500,000	\$3,945,800	4/1/2024			11/20/2025	
K-07-B	US 50 Blue Mesa K-07-B Critical Repairs	3	26446	2	Bridge Replacement and Major Rehabilitation	\$0	\$0	\$0	\$0	\$0	\$0	\$0	\$9,533,008	\$0	\$9,533,008	\$9,533,008			6/8/2024	7/3/2024	
K-07-B	US 50 Blue Mesa K-07-B Permanent Repairs	3	26447	0	Bridge Replacement and Major Rehabilitation	\$0	\$0	\$0	\$0	\$0	\$28,568,569	\$0	\$17,132,936	\$0	\$45,701,505	\$45,701,505			7/5/2024		
K-07-A	US 50 Blue Mesa K-07-A Permanent Repairs	3	26448	0	Bridge Replacement and Major Rehabilitation	\$0	\$0	\$0	\$0	\$0	\$10,913,066	\$21,038,205	\$8,728,281	\$0	\$40,679,552	\$40,679,552			7/5/2024		
K-07-A	Blue Mesa Risk and Resilience	3	TBD	0	Bridge Replacement and Major Rehabilitation	\$0	\$0	\$0	\$0	\$0	\$10,000,000	\$0	\$0	\$0	\$10,000,000	\$10,000,000					
K-07-B	Blue Mesa Risk and Resilience	3	TBD	0	Bridge Replacement and Major Rehabilitation	See K-07-A	See K-07-A	See K-07-A	See K-07-A	See K-07-A	See K-07-A	See K-07-A	See K-07-A	See K-07-A	See K-07-A	See K-07-A					
D-11-N	SH9 RR Bridge Replacement	3	26956	1	Bridge Replacement and Major Rehabilitation	\$731,236	\$0	\$0	\$0	\$731,236	\$0	\$17,500,000	\$0	\$0	\$17,500,000	\$18,231,236	4/1/2025				
F-11-T	Red Cliff Arch	3	27145	1	Bridge Replacement and Major Rehabilitation	\$5,000,000	\$0	\$0	\$0	\$5,000,000	\$12,000,000	\$23,000,000	\$0	\$0	\$35,000,000	\$40,000,000					
J-04-X	SH 348 J-04-X Replacement	3	26992	1	Bridge Replacement and Major Rehabilitation	\$0	\$0	\$0	\$0	\$0	\$710,000	\$0	\$0	\$0	\$710,000	\$710,000					
A-24-C	US 138 over Ditch	4	17674	1	Bridge Replacement and Major Rehabilitation	\$0	\$0	\$0	\$27,785	\$27,785	\$276	\$0	\$0	\$842,610	\$842,886	\$870,671					
A-26-F	US 138 over Draw	4	17674	1	Bridge Replacement and Major Rehabilitation	See A-24-C	See A-24-C	See A-24-C	See A-24-C	See A-24-C	See A-24-C	See A-24-C	See A-24-C	See A-24-C	See A-24-C	See A-24-C					
G-22-J	US 24 ML over DRAW	4	18003	1	Bridge Replacement and Major Rehabilitation	\$0	\$0	\$0	\$0	\$0	\$0	\$0	\$0	\$1,044,720	\$1,044,720	\$1,044,720	4/1/2008	12/16/2010	5/2/2011	8/24/2011	
B-16-AE	US 287 ML over DRAW	4	17804	1	Bridge Replacement and Major Rehabilitation	\$85,153	\$0	\$0	\$1,540,852	\$1,626,005	\$0	\$0	\$0	\$2,338,640	\$2,338,640	\$3,964,645	4/15/2010	5/12/2011	7/25/2011	5/1/2012	
B-17-L	SH 14 ML over COALBANK CREEK	4	18451	1	Bridge Replacement and Major Rehabilitation	\$1,398,233	\$0	\$0	\$249,641	\$1,647,874	\$0	\$0	\$0	\$3,358,015	\$3,358,015	\$5,005,888	12/16/2010	11/1/2012	4/1/2014	9/30/2015	
C-17-BN	I 25 SERVICE RD over LITTLE THOMPSON RIVER SR	4	18053	1	Bridge Replacement and Major Rehabilitation	\$0	\$0	\$0	\$941,887	\$941,887	\$0	\$0	\$0	\$1,782,003	\$1,782,003	\$2,723,889	2/1/2011	4/5/2012	9/4/2012	4/12/2013	
D-28-B	US 34 ML over N FRK REPUBLICAN RIVER	4	18432	1	Bridge Replacement and Major Rehabilitation	\$781,069	\$0	\$0	\$0	\$781,069	\$0	\$0	\$0	\$2,693,477	\$2,693,477	\$3,474,546	11/23/2010	4/26/2012	6/25/2012	12/14/2012	
D-17-AK	SH 66 ML over ST VRAIN River	4	18224	1	Bridge Replacement and Major Rehabilitation	\$0	\$0	\$0	\$1,311,071	\$1,311,071	\$0	\$0	\$0	\$4,228,779	\$4,228,779	\$5,539,850	2/1/2011	9/6/2012	11/5/2012	6/18/2014	
G-21-B	I-70 FRONTAGE ROAD over DRAW	4	18610	1	Bridge Replacement and Major Rehabilitation	\$0	\$0	\$0	\$348,714	\$348,714	\$0	\$0	\$0	\$1,012,700	\$1,012,700	\$1,361,414	9/5/2011	11/16/2012	1/28/2013	5/23/2013	
B-16-D	SH 14 ML over CACHE LA POUFRE RIVER	4	18085	1	Bridge Replacement and Major Rehabilitation	\$351,787	\$0	\$0	\$2,149,437	\$2,501,224	\$9,946,160	\$0	\$0	\$1,411,742	\$11,357,902	\$13,859,126	7/14/2009	6/19/2014	9/22/2014	11/20/2015	
B-17-C	US 85 ML over UPRR Nunn Bridge	4	18669	1	Bridge Replacement and Major Rehabilitation	\$0	\$0	\$0	\$1,254,778	\$1,254,778	\$3,053	\$0	\$0	\$6,009,722	\$6,012,775	\$7,267,553	6/24/2011	1/10/2013	3/17/2013	6/13/2014	
C-17-B	SH60 over SOUTH PLATTE RIVER	4	21146	1	Bridge Replacement and Major Rehabilitation	\$1,109,585	\$0	\$0	\$0	\$1,109,585	\$8,500,249	\$0	\$0	\$0	\$8,500,249	\$9,609,834	6/17/2015	6/21/2018	10/1/2018	11/1/2019	
B-16-EU	I-25 ML over County Road 48	4	20999	1	Bridge Replacement and Major Rehabilitation	\$943,689	\$0	\$0	\$0	\$943,689	\$6,464,893	\$0	\$0	\$0	\$6,464,893	\$7,408,583	6/1/2016	2/14/2019	5/22/2019	1/27820	

1: Infrastructure Revenue Bond Series 2024A, 2025A, and contemplated financings totaling \$450-\$500 million

2: Other funds made up of Federal, State, Local, Bank

Statewide Bridge and Tunnel Enterprise
Program Allocation Plan - Quarterly Update
As of June 30, 2025 (FY25 - Q4)

Original Bridge Key	Location/Project	Region	Project Accounting Number	Count	Project Type	Total Precon FASTER Funds	Total Precon SB-260 Funds	Precon Infrastructure Revenue Bonds ¹	Total Precon Other Funds ²	Total Precon Funds	Total Construction FASTER Funds	Total Construction SB-260	Construction Infrastructure Revenue Bonds ¹	Total Construction Other Funds ²	Total Construction Funds	Total Project Funds	Precon Start Date	Ad Date	Construction Start Date	Construction Completion Date
B-16-AM	Prospect Road over I-25	4	22248	1	Bridge Replacement and Major Rehabilitation	\$3,030,553	\$0	\$0	\$0	\$3,030,553	\$18,514,622	\$0	\$0	\$0	\$18,514,622	\$21,545,175	1/27/2017	5/12/2017	4/5/2018	9/29/2024
C-17-EL	I-25 ML over DRAW (Hillsboro)	4	22482	1	Bridge Replacement and Major Rehabilitation	\$19,054	\$0	\$0	\$0	\$19,054	\$3,585,646	\$0	\$0	\$0	\$3,585,646	\$3,604,700	5/21/2018	5/12/2017	6/27/2018	11/30/2024
G-25-K	SH59 over I-70 (Emergency)	4	22566	1	Bridge Replacement and Major Rehabilitation	\$270,966	\$0	\$0	\$0	\$270,966	\$6,235,225	\$0	\$0	\$0	\$6,235,225	\$6,506,191	4/16/2018		4/27/2018	1/16/2019
D-27-G	US 34 ML over N FRK REPUBLICAN RIVER	4	22962	1	Bridge Replacement and Major Rehabilitation	\$561,694	\$0	\$0	\$0	\$561,694	\$3,002,218	\$0	\$0	\$0	\$3,002,218	\$3,563,912	3/1/2019	4/1/2020	6/29/2020	11/18/2020
D-28-P	US 34 OVER REPUBLICAN RIVER	4	22963	1	Bridge Replacement and Major Rehabilitation	\$0	\$0	\$0	\$0	\$0	\$3,722,074	\$0	\$0	\$0	\$3,722,074	\$3,722,074			4/27/2020	6/14/2021
Various	TIMBER BRIDGE EASTERN PLAINS	4	23010	0	Bridge Replacement and Major Rehabilitation	\$4,201,138	\$0	\$0	\$0	\$4,201,138	\$0	\$0	\$0	\$0	\$0	\$4,201,138	2/21/2021			10/3/2021
F-19-E	TIMBER BRIDGE EASTERN PLAINS: PKG 1	4	24367	1	Bridge Replacement and Major Rehabilitation	\$0	\$0	\$0	\$0	\$0	\$9,341,799	\$0	\$0	\$0	\$9,341,799	\$9,341,799	9/1/2022	11/1/2021	2/28/2022	11/30/2022
F-20-J	TIMBER BRIDGE EASTERN PLAINS: PKG 1	4	24367	1	Bridge Replacement and Major Rehabilitation	See F-19-E	See F-19-E	See F-19-E	See F-19-E	See F-19-E	See F-19-E	See F-19-E	See F-19-E	See F-19-E	See F-19-E	See F-19-E	9/1/2022	11/1/2021	2/28/2022	11/30/2022
F-20-L	TIMBER BRIDGE EASTERN PLAINS: PKG 1	4	24367	1	Bridge Replacement and Major Rehabilitation	See F-19-E	See F-19-E	See F-19-E	See F-19-E	See F-19-E	See F-19-E	See F-19-E	See F-19-E	See F-19-E	See F-19-E	See F-19-E	9/1/2022	11/1/2021	2/28/2022	11/30/2022
C-22-K	TIMBER BRIDGE EASTERN PLAINS: PKG 2	4	24405	1	Bridge Replacement and Major Rehabilitation	\$0	\$0	\$0	\$0	\$0	\$3,790,503	\$0	\$0	\$0	\$3,790,503	\$3,790,503	9/1/2022	8/9/2022	10/25/2022	10/26/2023
D-24-O	TIMBER BRIDGE EASTERN PLAINS: PKG 2	4	24405	1	Bridge Replacement and Major Rehabilitation	See C-22-K	See C-22-K	See C-22-K	See C-22-K	See C-22-K	See C-22-K	See C-22-K	See C-22-K	See C-22-K	See C-22-K	See C-22-K	9/1/2022	8/9/2022	10/25/2022	10/26/2023
D-25-E	TIMBER BRIDGE EASTERN PLAINS: PKG 3	4	25447	1	Bridge Replacement and Major Rehabilitation	\$0	\$0	\$0	\$0	\$0	\$5,106,353	\$0	\$0	\$0	\$5,106,353	\$5,106,353	9/1/2022	3/29/2023	10/23/2023	10/30/2024
D-28-D	TIMBER BRIDGE EASTERN PLAINS: PKG 4	4	25866	1	Bridge Replacement and Major Rehabilitation	\$0	\$0	\$0	\$0	\$0	\$5,688,482	\$0	\$0	\$0	\$5,688,482	\$5,688,482	9/1/2022	10/24/2023	4/1/2024	1/30/2025
I-24-N	US 40 ML over DRAW	4	24224	1	Bridge Replacement and Major Rehabilitation	\$440,347	\$0	\$0	\$1	\$440,348	\$9,992,479	\$0	\$0	\$0	\$9,992,479	\$10,432,827	1/1/2021	12/14/2023	4/1/2024	
B-27-A	Holyoke Bundle	4	22529	1	Bridge Replacement and Major Rehabilitation	\$2,049,153	\$0	\$0	\$0	\$2,049,153	\$19,241,352	\$0	\$0	\$0	\$19,241,352	\$21,290,505	10/5/2022	4/5/2024	3/17/2024	9/30/2026
B-27-D	Holyoke Bundle	4	22529	1	Bridge Replacement and Major Rehabilitation	See B-27-A	See B-27-A	See B-27-A	See B-27-A	See B-27-A	See B-27-A	See B-27-A	See B-27-A	See B-27-A	See B-27-A	See B-27-A	10/5/2022	4/5/2024	3/17/2024	9/30/2026
B-27-F	Holyoke Bundle	4	22529	1	Bridge Replacement and Major Rehabilitation	See B-27-A	See B-27-A	See B-27-A	See B-27-A	See B-27-A	See B-27-A	See B-27-A	See B-27-A	See B-27-A	See B-27-A	See B-27-A	10/5/2022	4/5/2024	3/17/2024	9/30/2026
A-27-A	Holyoke Bundle	4	22529	1	Bridge Replacement and Major Rehabilitation	See B-27-A	See B-27-A	See B-27-A	See B-27-A	See B-27-A	See B-27-A	See B-27-A	See B-27-A	See B-27-A	See B-27-A	See B-27-A	10/5/2022	4/5/2024	3/17/2024	9/30/2026
G-18-B	SH 86 over Kiowa Creek	4	26083	1	Bridge Replacement and Major Rehabilitation	\$707,643	\$0	\$0	\$0	\$707,643	\$12,300,000	\$0	\$0	\$0	\$12,300,000	\$13,007,643	3/1/2024			
C-22-AY	I-76 WB over BNSF, Beaver Creek	4	26378	1	Bridge Replacement and Major Rehabilitation	\$0	\$0	\$0	\$0	\$0	\$18,000,000	\$0	\$0	\$0	\$18,000,000	\$18,000,000				
C-22-BG	I-76 WB over BNSF, Beaver Creek	4	26378	1	Bridge Replacement and Major Rehabilitation	See C-22-AY	See C-22-AY	See C-22-AY	See C-22-AY	See C-22-AY	See C-22-AY	See C-22-AY	See C-22-AY	See C-22-AY	See C-22-AY	See C-22-AY				
B-24-A	US 6 Atwood to Sterling	4	26861	1	Bridge Replacement and Major Rehabilitation	\$0	\$0	\$0	\$0	\$0	\$2,000,000	\$0	\$0	\$0	\$2,000,000	\$2,000,000				
L-06-A	US 550 ML over Bear Creek	5	17670	1	Bridge Replacement and Major Rehabilitation	\$6,388	\$0	\$0	\$117,113	\$123,501	\$1,805	\$0	\$0	\$4,756,830	\$4,758,635	\$4,882,136				
L-04-B	SH 145 ML over LEOPARD CREEK	5	18231	1	Bridge Replacement and Major Rehabilitation	\$0	\$0	\$0	\$506,177	\$506,177	\$0	\$0	\$0	\$3,349,175	\$3,349,175	\$3,855,352	2/1/2011	3/15/2012	5/15/2012	5/30/2013
L-05-B	SH 62 ML over UNCOMPAGHRE RIVER	5	18323	1	Bridge Replacement and Major Rehabilitation	\$1,012,619	\$0	\$0	\$268,923	\$1,281,542	\$0	\$0	\$0	\$6,523,054	\$6,523,054	\$7,804,595	2/1/2011	2/9/2012	4/24/2012	5/30/2013
K-01-C	SH90 over DOLORES RIVER	5	20817	1	Bridge Replacement and Major Rehabilitation	\$965,694	\$0	\$0	\$0	\$965,694	\$4,977,169	\$0	\$0	\$0	\$4,977,169	\$5,942,863	1/30/2015	11/9/2015	12/5/2016	8/18/2017
K-11-G	US 50 over AGATE CREEK	5	22436	1	Bridge Replacement and Major Rehabilitation	\$0	\$0	\$0	\$0	\$0	\$1,526,757	\$0	\$0	\$0	\$1,526,757	\$1,526,757	3/29/2018	3/29/2018	6/18/2018	10/8/2018
P-12-A	US 285 over RIO CONEJOS OVERFLOW	5	23069	1	Bridge Replacement and Major Rehabilitation	\$338,982	\$0	\$0	\$0	\$338,982	\$5,145,301	\$0	\$0	\$0	\$5,145,301	\$5,484,283	4/18/2019	11/1/2025	4/1/2026	5/1/2027
P-07-S	SH151 ML (Culvert Failure)	5	25737	1	Bridge Replacement and Major Rehabilitation	\$183,662	\$0	\$0	\$0	\$183,662	\$3,887,602	\$0	\$0	\$0	\$3,887,602	\$4,071,264	4/24/2023	6/23/2023	8/31/2023	11/22/2023
J-12-AJ	US 285 ML over DRAW	5	26105	1	Bridge Replacement and Major Rehabilitation	\$0	\$0	\$0	\$0	\$0	\$605,373	\$0	\$0	\$0	\$605,373	\$605,373	1/4/2024	4/15/2024		8/21/2024
P-05-B	US 160 over Florida River	5	26704	1	Bridge Replacement and Major Rehabilitation	\$0	\$2,637,488	\$0	\$0	\$2,637,488	\$0	\$14,000,000	\$0	\$0	\$14,000,000	\$16,637,488	9/1/2024	2/28/2026		
L-11-C	SH 114 Bridges	5	26416	1	Bridge Replacement and Major Rehabilitation	\$862,635	\$0	\$0	\$0	\$862,635	\$0	\$14,500,000	\$0	\$0	\$14,500,000	\$15,362,635	9/1/2024	2/18/2027		
K-09-B	SH 114 Bridges	5	26416	1	Bridge Replacement and Major Rehabilitation	See L-11-C	See L-11-C	See L-11-C	See L-11-C	See L-11-C	See L-11-C	See L-11-C	See L-11-C	See L-11-C	See L-11-C	See L-11-C	9/1/2024	2/18/2027		
F-13-Y	EJMT Tunnel Projects	1	TBD	1	Tunnel	\$0	\$0	\$0	\$0	\$0	\$0	\$5,042,749	\$0	\$0	\$5,042,749	\$5,042,749				
F-13-X	EJMT Tunnel Projects	1	TBD	1	Tunnel	See F-13-Y	See F-13-Y	See F-13-Y	See F-13-Y	See F-13-Y	See F-13-Y	See F-13-Y	See F-13-Y	See F-13-Y	See F-13-Y	See F-13-Y				
F-13-Y	Plenum Liner	1	25881	0	Tunnel	\$0	\$0	\$0	\$0	\$0	\$0	\$28,009,084	\$0	\$0	\$28,009,084	\$28,009,084			7/31/2023	10/31/2025
F-13-X	Plenum Liner	1	25881	0	Tunnel	See F-13-Y	See F-13-Y	See F-13-Y	See F-13-Y	See F-13-Y	See F-13-Y	See F-13-Y	See F-13-Y	See F-13-Y	See F-13-Y	See F-13-Y			7/31/2023	10/31/2025
F-13-Y	EJMT LED Lighting Upgrade	1	26276	0	Tunnel	\$0	\$1,803,600	\$0	\$0	\$1,803,600	\$0	\$42,446,400	\$0	\$0	\$42,446,400	\$44,250,000	11/18/2024			
F-13-X	EJMT LED Lighting Upgrade	1	26276	0	Tunnel	See F-13-Y	See F-13-Y	See F-13-Y	See F-13-Y	See F-13-Y	See F-13-Y	See F-13-Y	See F-13-Y	See F-13-Y	See F-13-Y	See F-13-Y	11/18/2024			
F-13-Y	EJMT South Tunnel Fan Motor Upgrade	1	25306	0	Tunnel	\$0	\$1,000,000	\$0	\$0	\$1,000,000	\$0	\$21,500,000	\$0	\$0	\$21,500,000	\$22,500,000				
F-13-X	EJMT South Tunnel Fan Motor Upgrade	1	25306	0	Tunnel	See F-13-Y	See F-13-Y	See F-13-Y	See F-13-Y	See F-13-Y	See F-13-Y	See F-13-Y	See F-13-Y	See F-13-Y	See F-13-Y	See F-13-Y				
F-13-Y	EJMT Right Lane Overlay	1	27031	0	Tunnel	\$0	\$0	\$0	\$0	\$0	\$0	\$3,198,167	\$0	\$0	\$3,198,167	\$3,198,167				
F-13-X	EJMT Right Lane Overlay	1	27031	0	Tunnel	See F-13-Y	See F-13-Y	See F-13-Y	See F-13-Y	See F-13-Y	See F-13-Y	See F-13-Y	See F-13-Y	See F-13-Y	See F-13-Y	See F-13-Y				
L-22-L	SH71 over ARKANSAS RIVER	2	24738	1	Preventative Maintenance	\$18,918	\$0	\$0	\$0	\$18,918	\$953,208	\$0	\$0	\$0	\$953,208	\$972,126	4/12/2022		10/4/2022	6/15/2023
F-13-V	I-70 MP 211 Repair	3	26060	1	Preventative Maintenance	\$25,000	\$0	\$0	\$0	\$25,000	\$40,000	\$0	\$0	\$0	\$40,000	\$65,000				
F-08-AD	I-70 Glenwood Canyon Preventative Maintenance	3	25603	1	Preventative Maintenance	\$0	\$0	\$0	\$0	\$0	\$8,655,008	\$0	\$0	\$0	\$8,655,008	\$8,655,008		12/12/2024	5/5/2025	
F-08-AE	I-70 Glenwood Canyon Preventative Maintenance	3	25603	1	Preventative Maintenance	See F-08-AD	See F-08-AD	See F-08-AD	See F-08-AD	See F-08-AD	See F-08-AD	See F-08-AD	See F-08-AD	See F-08-AD	See F-08-AD	See F-08-AD		12/12/2024	5/5/2025	
F-08-AH	I-70 Glenwood Canyon Preventative Maintenance	3	25603	1	Preventative Maintenance	See F-08-AD	See F-08-AD	See F-08-AD	See F-08-AD	See F-08-AD	See F-08-AD	See F-08-AD	See F-08-AD	See F-08-AD	See F-08-AD	See F-08-AD		12/12/2024	5/5/2025	
F-08-AL	I-70 Glenwood Canyon Preventative Maintenance	3	25603	1	Preventative Maintenance	See F-08-AD	See F-08-AD	See F-08-AD	See F-08-AD	See F-08-AD	See F-08-AD	See F-08-AD	See F-08-AD	See F-08-AD	See F-08-AD	See F-08-AD		12/12/2024	5/5/2025	
F-08-AR	I-70 Glenwood Canyon Preventative Maintenance	3	25603	1	Preventative Maintenance	See F-08-AD	See F-08-AD	See F-08-AD	See F-08-AD	See F-08-AD	See F-08-AD	See F-08-AD	See F-08-AD	See F-08-AD	See F-08-AD	See F-08-AD		12/12/2024	5/5/2025	
F-08-AS	I-70 Glenwood Canyon Preventative Maintenance	3	25603	1	Preventative Maintenance	See F-08-AD	See F-08-AD	See F-08-AD	See F-08-AD	See F-08-AD	See F-08-AD	See F-08-AD	See F-08-AD	See F-08-AD	See F-08-AD	See F-08-AD		12/12/2024	5/5/2025	
F-08-AU	I-70 Glenwood Canyon Preventative Maintenance	3	25603	1	Preventative Maintenance	See F-08-AD	See F-08-AD	See F-08-AD	See F-08-AD	See F-08-AD	See F-08-AD	See F-08-AD	See F-08-AD	See F-08-AD	See F-08-AD	See F-08-AD		12/12/2024	5/5/2025	
F-08-AV	I-70 Glenwood Canyon Preventative Maintenance	3	25603	1	Preventative Maintenance	See F-08-AD	See F-08-AD	See F-08-AD	See F-08-AD	See F-08-AD	See F-08-AD	See F-08-AD	See F-08-AD	See F-08-AD	See F-08-AD	See F-08-AD		12/12/2024	5/5/2025	
F-08-BC	I-70 Glenwood Canyon Preventative Maintenance	3	25603	1	Preventative Maintenance	See F-08-AD	See F-08-AD	See F-08-AD	See F-08-AD	See F-08-AD	See F-08-AD	See F-08-AD	See F-08-AD	See F-08-AD	See F-08-AD	See F-08-AD		12/12/2024	5/5/2025	
F-08-BH	I-70 Glenwood Canyon Preventative Maintenance	3	25603	1	Preventative Maintenance	See F-08-AD	See F-08-AD	See F-08-AD	See F-08-AD	See F-08-AD	See F-08-AD	See F-08-AD	See F-08-AD	See F-08-AD	See F-08-AD	See F-08-AD		12/12/2024	5/5/2025	
F-08-BI	I-70 Glenwood Canyon Preventative Maintenance	3	25603	1	Preventative Maintenance	See F-08-AD	See F-08-AD	See F-08-AD	See F-08-AD	See F-08-AD	See F-08-AD	See F-08-AD	See F-08-AD	See F-08-AD	See F-08-AD	See F-08-AD		12/12/2024	5/5/2025	
F-08-BJ	I-70 Glenwood Canyon Preventative Maintenance	3	25603	1	Preventative Maintenance	See F-08-AD	See F-08-AD	See F-08-AD	See F-08-AD	See F-08-AD	See F-08-AD	See F-08-AD	See F-08-AD	See F-08-AD	See F-08-AD	See F-08-AD		12/12/2024	5/5/2025	

1: Infrastructure Revenue Bond Series 2024A, 2025A, and contemplated financings totaling \$450-\$500 million

2: Other funds made up of Federal, State, Local, Bank of America Loan, and 2010A Bonds Principal and Interest

Statewide Bridge and Tunnel Enterprise
Program Allocation Plan - Quarterly Update
As of June 30, 2025 (FY25 - Q4)

Funding Source	Preconstruction	Construction	Total
FASTER	\$ 318,975,413	\$ 1,203,252,165	\$ 1,522,227,578
SB-260 Bridge and Tunnel Fees	\$ 24,441,088	\$ 419,244,760	\$ 443,685,848
Infrastructure Revenue Bonds (Principal and Interest) ¹	\$ -	\$ 490,401,786	\$ 490,401,786
Federal	\$ 8,792,271	\$ 31,815,348	\$ 40,607,619
State	\$ 925,518	\$ 143,827	\$ 1,069,345
Local	\$ 25,139,797	\$ 11,163,135	\$ 36,302,932
Bank of America Loan	\$ 12,030,650	\$ 28,668,324	\$ 40,698,973
Series 2010A Bonds (Principal and Interest)	\$ 53,382,847	\$ 254,586,876	\$ 307,969,722
Total	\$ 443,687,583	\$ 2,439,276,219	\$ 2,882,963,802

Total Bridge Replacement and Major Rehabilitation Structures	229
Total Preventative Maintenance Structures	14
Total Tunnel Projects	4

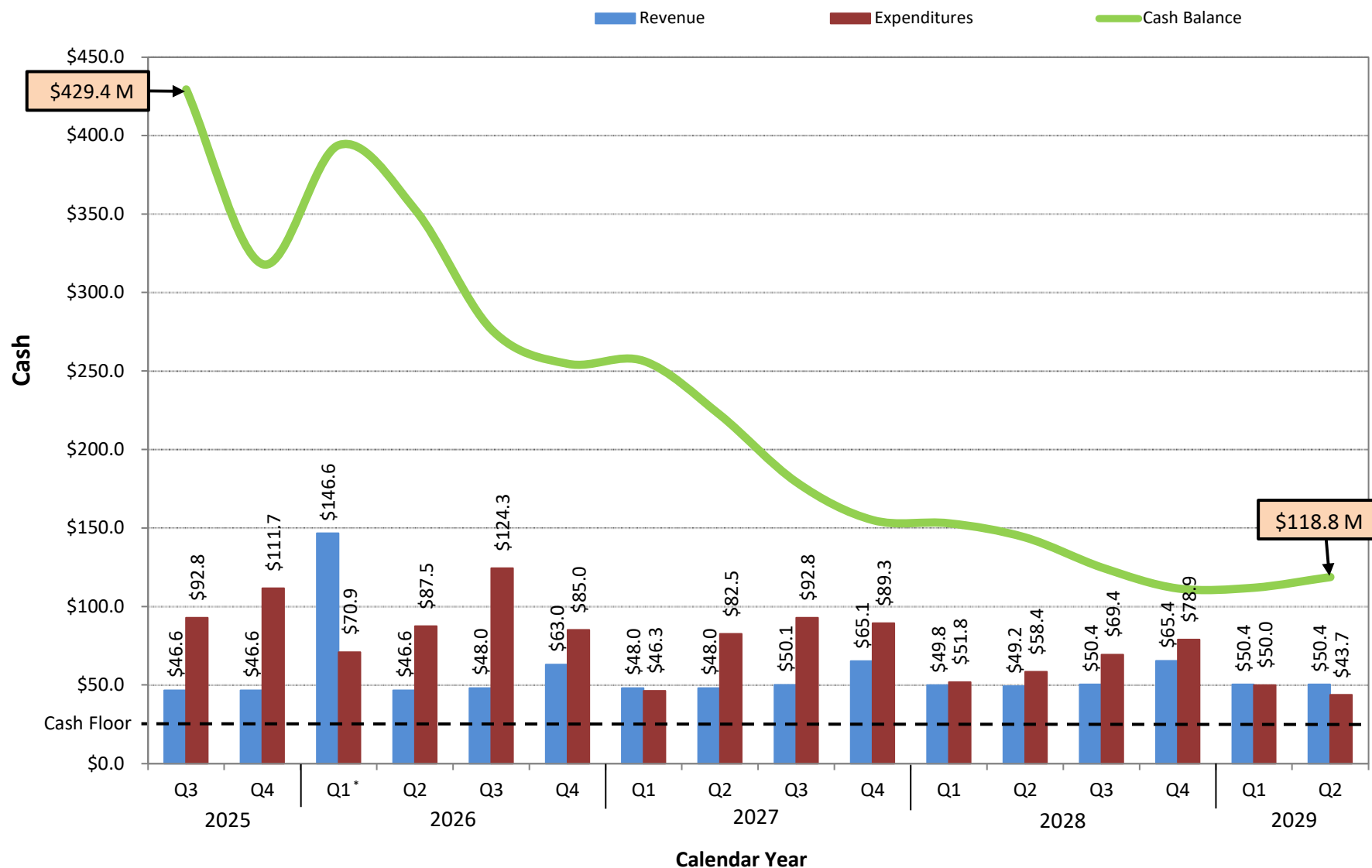
1: Infrastructure Revenue Bond Series 2024A, Series 2025A, and contemplated financings totaling \$450-\$500 million

Appendix D - Four Year Quarterly Cash Flow Graph



COLORADO
Department of Transportation
Statewide Bridge and Tunnel Enterprise

Statewide Bridge and Tunnel Enterprise Four Year Quarterly Cash Flow Projection (in millions)



*The spike in the cash balance is the result of the final contemplated IRB issuance of \$100 million in 2026.