

Air Force Academy Flight Operations, Vicinity Colorado Springs CO

Chart identifies volume operations sunrise to sunset, Mon thru Fri and occasionally on Sat & Federal Holidays.

Legend for Academy's Cirrus SR-20 & Cessna 150 /172 Type Aircraft

- < 9000+9500 > Bi-directional routes with altitudes for separate directions
- < 9500 > KAFF arrival routes from training areas with altitude and direction arrow
- 9500 > KAFF departure routes to training areas with altitude and direction arrow
- 8500+9000 > Example of a single direction route with two altitudes, also used with arrival routes
- 1000 AGL > Low level navigation route with altitude and direction arrow

VFR Training Area
Primary Working Altitudes
9500
8500

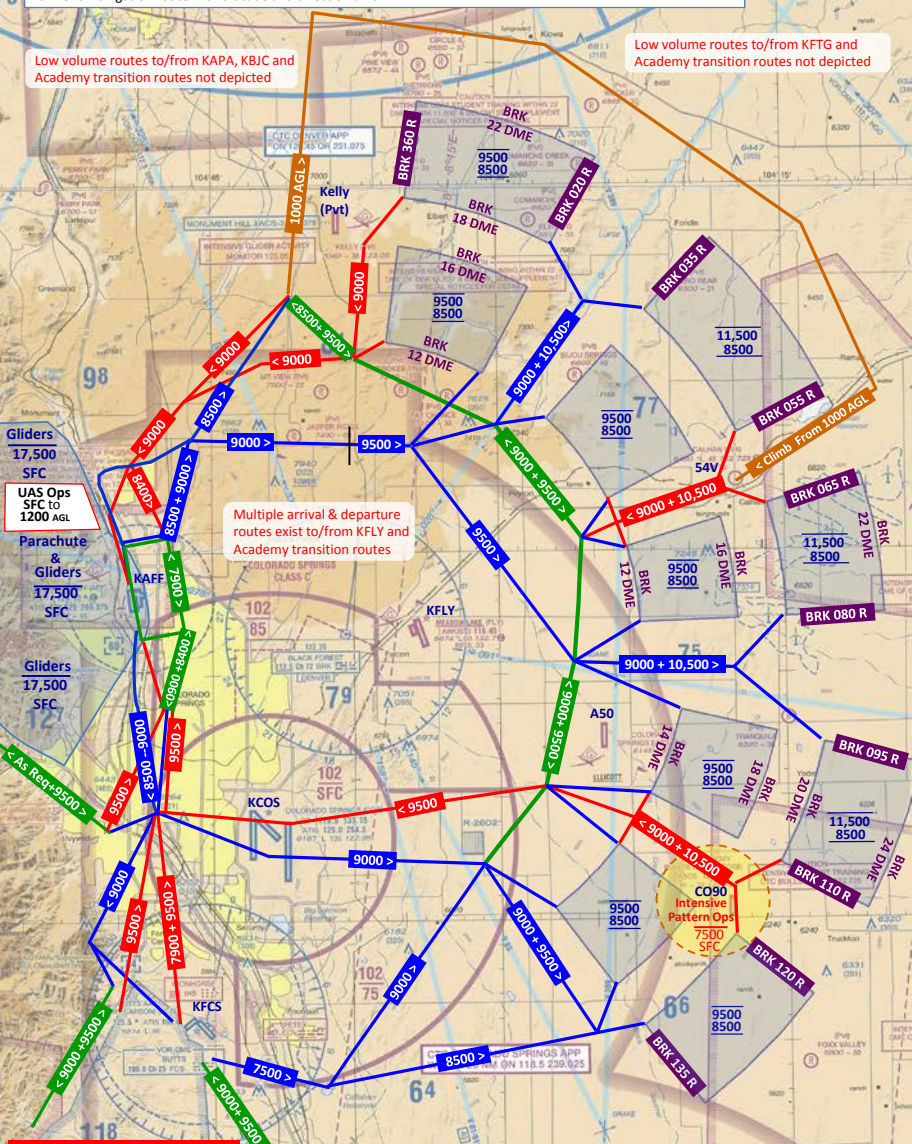
All altitudes stated in MSL unless otherwise indicated

Low volume routes to/from KAPA, KBJC and Academy transition routes not depicted

Low volume routes to/from KFTG and Academy transition routes not depicted

Multiple arrival & departure routes exist to/from KFLY and Academy transition routes

- Gliders 17,500 SFC
- UAS Ops SFC to 1200 AGL
- Parachute & Gliders 17,500 SFC
- Gliders 17,500 SFC



Not For In Flight Navigation

FAA Terminal Area Chart scaled to 1:555,556, Printed 17 Nov 2016

Chart depicts volume flight training operations only. Some operations are not depicted due to chart size or limited number of operations. Contact POC identified below for additional details. Information subject to change: See Special Notice Section FAA's Chart Supplement SW U.S. for updates.

Pilots are highly encouraged to contact DEN/COS Approach for traffic advisories as USAFA & USAF contracted aircraft at PUB are extremely difficult to acquire visually

306FG MACA Chart 16-1
USAFA POC: Phone: 719-333-0595
daniel.rund@us.af.mil

Scale In NM

10

20

30