



**COLORADO**

Department of Transportation

## 2016 Bicycle Count Summary



**Non-Motorized Monitoring  
2016 Counter Summary  
8/31/2017**

**Count Site Information**

Location: Boulder - Hwy US 36  
Count Mode: Bicycle  
Count Site ID: B90004  
Lat/Long: 40.06992 / -105.28342  
Facility Type: On-Road  
IN Direction: Southbound  
OUT Direction: Northbound

**Travel Volume Statistics**

Total Volume: 102,542  
AADT: 302  
Weekday/Weekend Index (WD/WE): 0.58  
AM-PM/Mid-Day Index (AMPM/Mid-Day): 0.65  
Directional Split (IN / OUT): 35% 65%  
Peak Day: 980

DOW Averages:

**Annual Average Day of the Week (AADW)**

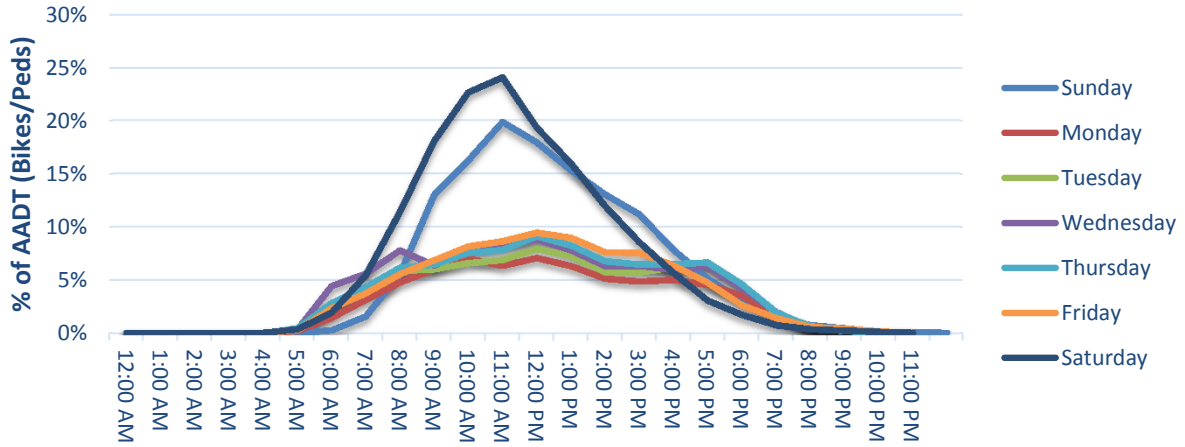
Day of Week	Total	IN	OUT
Sunday	405	138	266
Monday	208	72	136
Tuesday	242	86	156
Wednesday	273	109	164
Thursday	265	94	171
Friday	261	91	170
Saturday	461	160	301

**Data Quality**

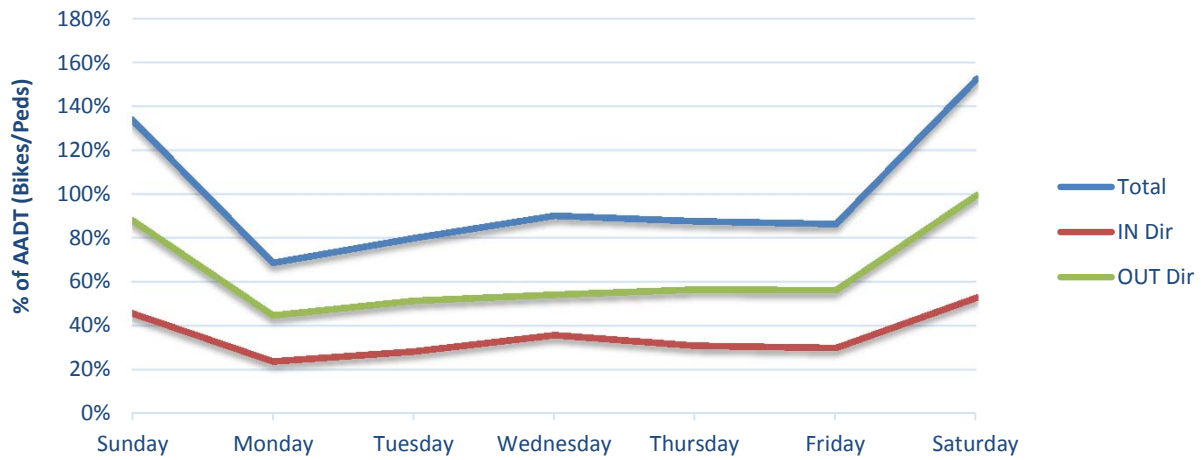
Days of Data: 266  
Percent Complete (Year): 73%  
Common Errors / Notes:

# Traffic Patterns

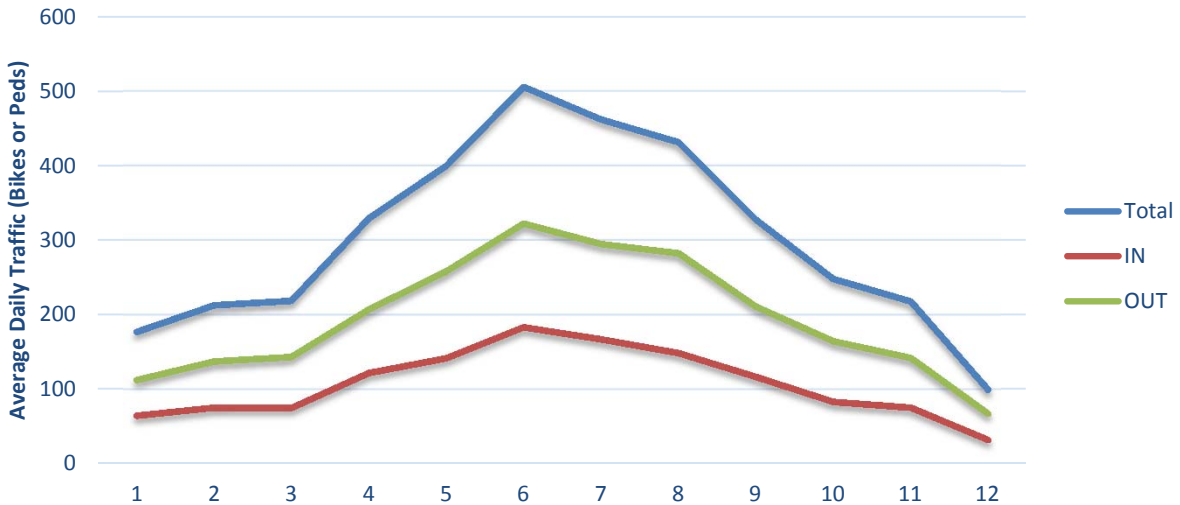
## Hour of Day



## Day of Week



## Month of Year





**Non-Motorized Monitoring  
2016 Counter Summary  
8/31/2017**

**Count Site Information**

Location: W 72nd Ave - Between Carr & Wadsworth  
Count Mode: Bicycle  
Count Site ID: B90005  
Lat/Long: 39.82733 / -105.08618 & 39.82703 / -105.08714  
Facility Type: On-Road  
IN Direction: Westbound  
OUT Direction: Eastbound -

**Travel Volume Statistics**

Total Volume: 6,160  
AADT: 17  
Weekday/Weekend Index (WD/WE): 0.96  
AM-PM/Mid-Day Index (AMPM/Mid-Day): 0.70  
Directional Split (IN / OUT): 45% 55%  
Peak Day: 64

DOW Averages:

**Annual Average Day of the Week (AADW)**

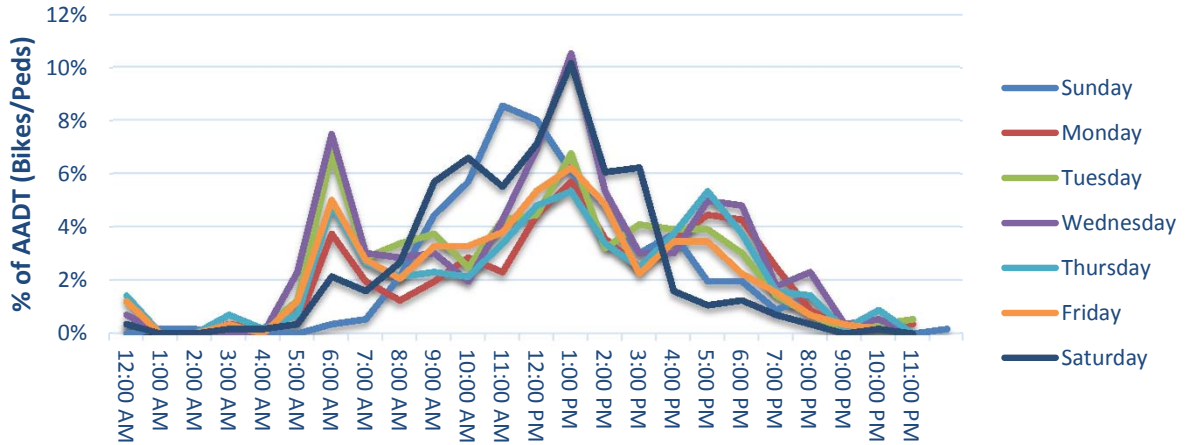
Day of Week	Total	IN	OUT
Sunday	17	8	10
Monday	15	7	8
Tuesday	18	7	10
Wednesday	19	8	11
Thursday	16	7	9
Friday	16	8	9
Saturday	18	8	9

**Data Quality**

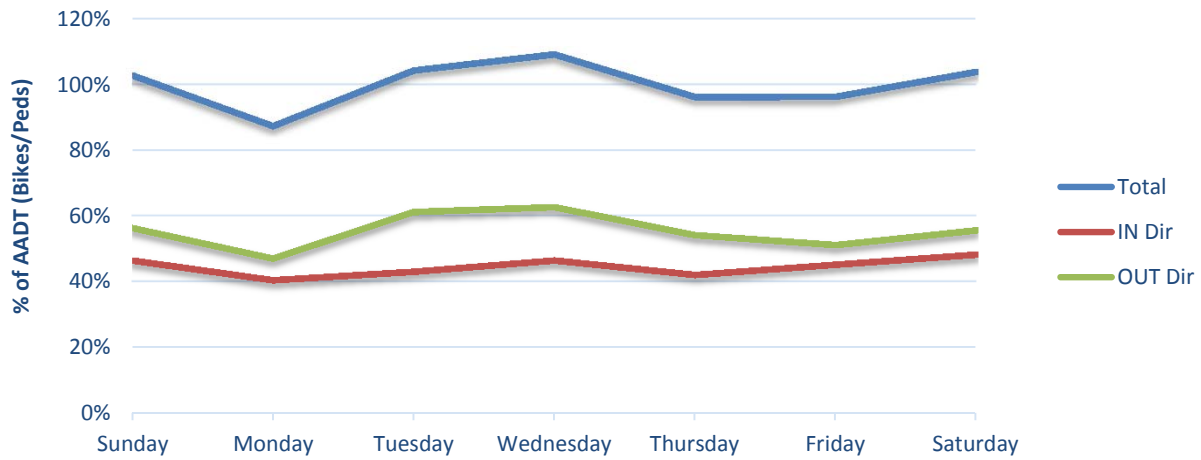
Days of Data: 266  
Percent Complete (Year): 73%  
Common Errors / Notes:

# Traffic Patterns

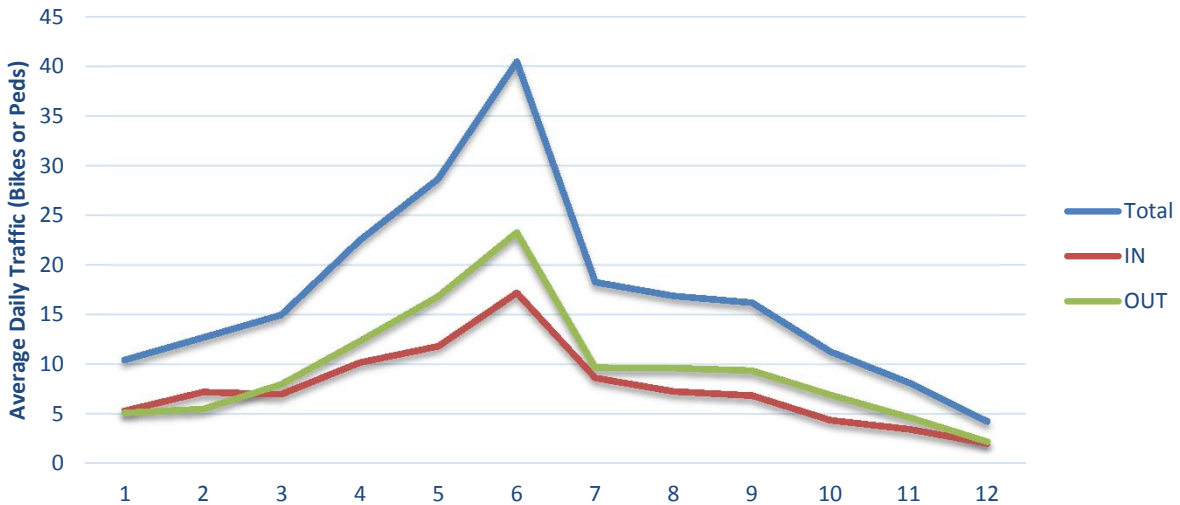
## Hour of Day



## Day of Week



## Month of Year





**Non-Motorized Monitoring  
2016 Counter Summary  
8/31/2017**

**Count Site Information**

Location: Vaughn St - One block south of 6th Ave  
Count Mode: Bicycle  
Count Site ID: B90007  
Lat/Long: 39.72489 / -104.83112  
Facility Type: On-Road  
IN Direction: North  
OUT Direction: South

**Travel Volume Statistics**

Total Volume: 10,116  
AADT: 39  
Weekday/Weekend Index (WD/WE): 2.38  
AM-PM/Mid-Day Index (AMPM/Mid-Day): 2.86  
Directional Split (IN / OUT): 41% 59%  
Peak Day: 119

DOW Averages:

**Annual Average Day of the Week (AADW)**

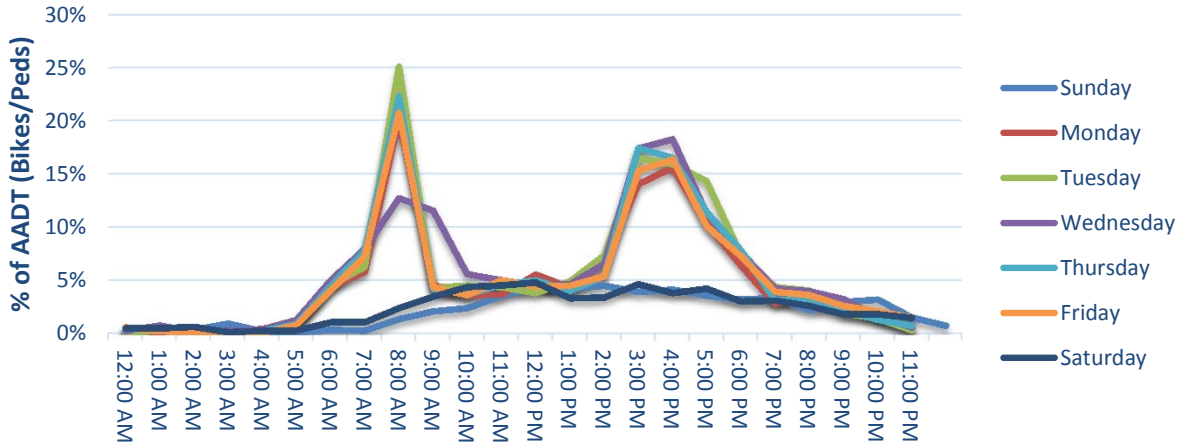
Day of Week	Total	IN	OUT
Sunday	19	6	13
Monday	42	18	24
Tuesday	50	22	28
Wednesday	51	22	29
Thursday	47	21	26
Friday	45	18	27
Saturday	20	7	14

**Data Quality**

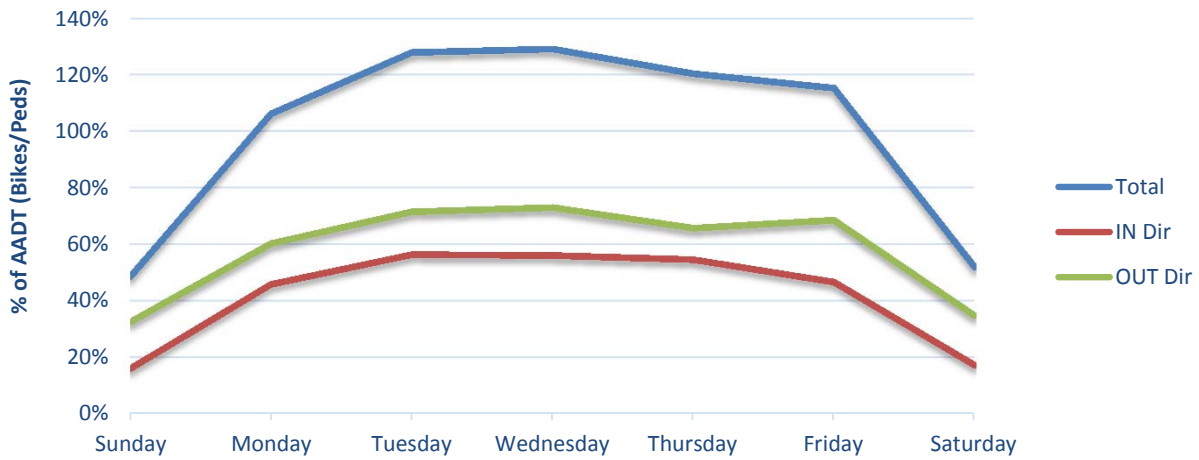
Days of Data: 266  
Percent Complete (Year): 73%  
Common Errors / Notes:

# Traffic Patterns

## Hour of Day



## Day of Week



## Month of Year





**Non-Motorized Monitoring  
2016 Counter Summary  
8/31/2017**

**Count Site Information**

Location: Highline Canal Trail  
Count Mode: Bicycle  
Count Site ID: B90009  
Lat/Long: 39.67427 / -104.88004  
Facility Type: Multi-Use Trail  
IN Direction: 0  
OUT Direction: 0

**Travel Volume Statistics**

Total Volume: 81,647  
AADT: 247  
Weekday/Weekend Index (WD/WE): 0.57  
AM-PM/Mid-Day Index (AMPM/Mid-Day): 0.89  
Directional Split (IN / OUT): 53% 47%  
Peak Day: 699

DOW Averages:

**Annual Average Day of the Week (AADW)**

Day of Week	Total	IN	OUT
Sunday	360	193	168
Monday	209	108	101
Tuesday	189	98	91
Wednesday	211	109	102
Thursday	206	107	99
Friday	206	109	96
Saturday	349	188	162

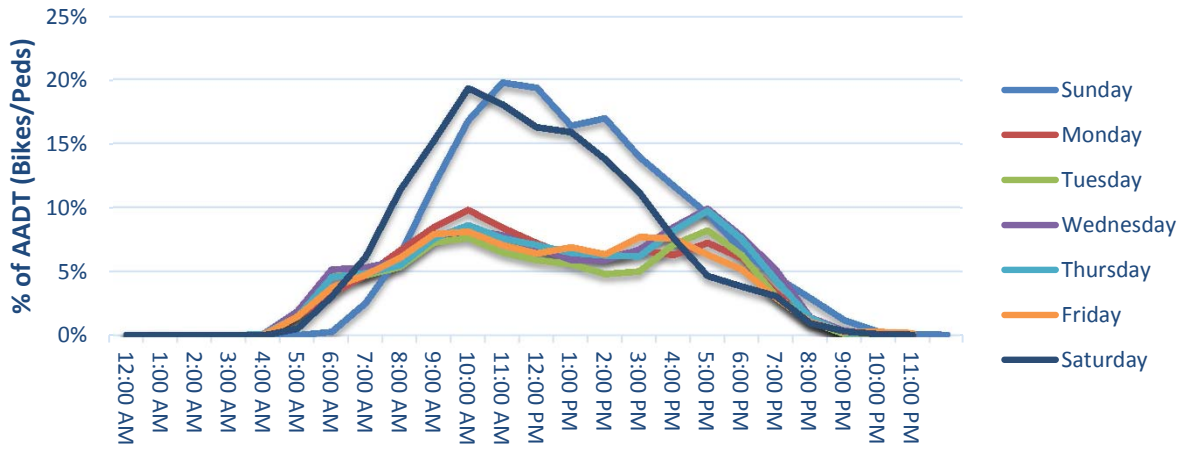
**Data Quality**

Days of Data: 266  
Percent Complete (Year): 73%  
Common Errors / Notes: Missing sept data due to counter malfunction

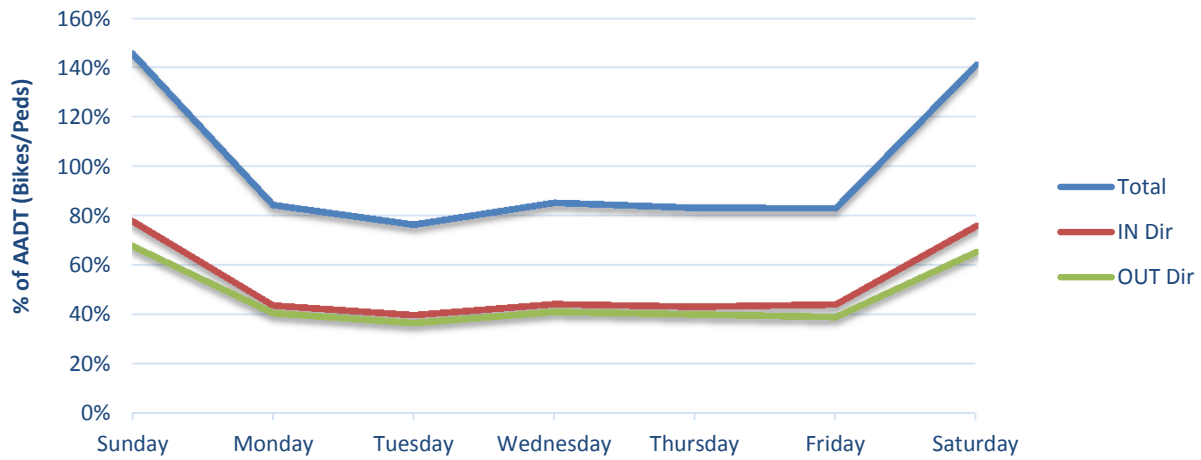


# Traffic Patterns

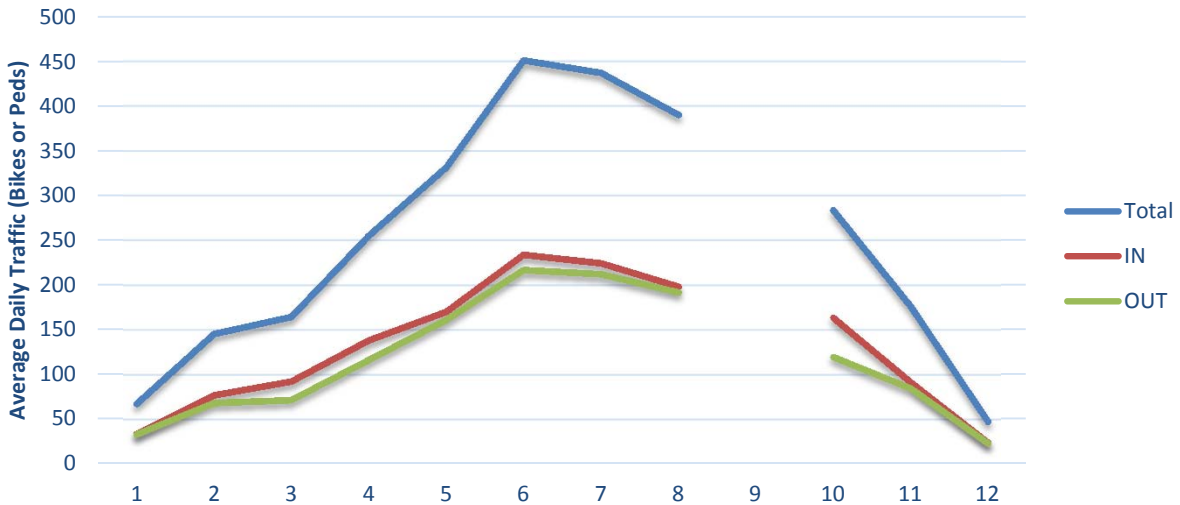
## Hour of Day



## Day of Week



## Month of Year





**Non-Motorized Monitoring  
2016 Counter Summary  
8/31/2017**

**Count Site Information**

Location: 8th St - West of N Erie Ave  
Count Mode: Bicycle  
Count Site ID: B90010  
Lat/Long: 38.27448 / -104.60178  
Facility Type: On Sidewalk  
IN Direction: Westbound  
OUT Direction: Eastbound

**Travel Volume Statistics**

Total Volume: 25,634  
AADT: 70  
Weekday/Weekend Index (WD/WE): 1.26  
AM-PM/Mid-Day Index (AMPM/Mid-Day): 0.67  
Directional Split (IN / OUT): 64% 36%  
Peak Day: 123

DOW Averages:

**Annual Average Day of the Week (AADW)**

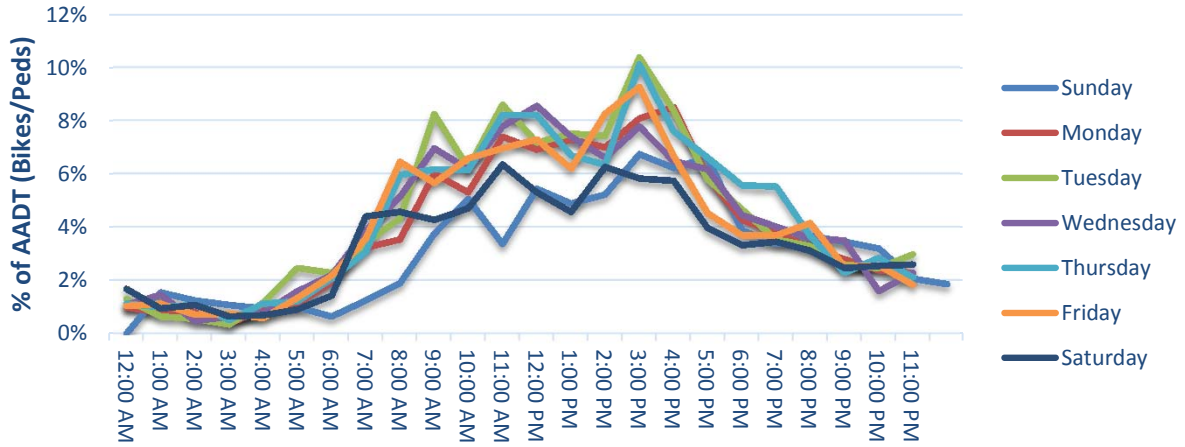
Day of Week	Total	IN	OUT
Sunday	58	35	23
Monday	72	45	26
Tuesday	79	51	28
Wednesday	75	49	27
Thursday	75	49	26
Friday	72	47	25
Saturday	60	37	23

**Data Quality**

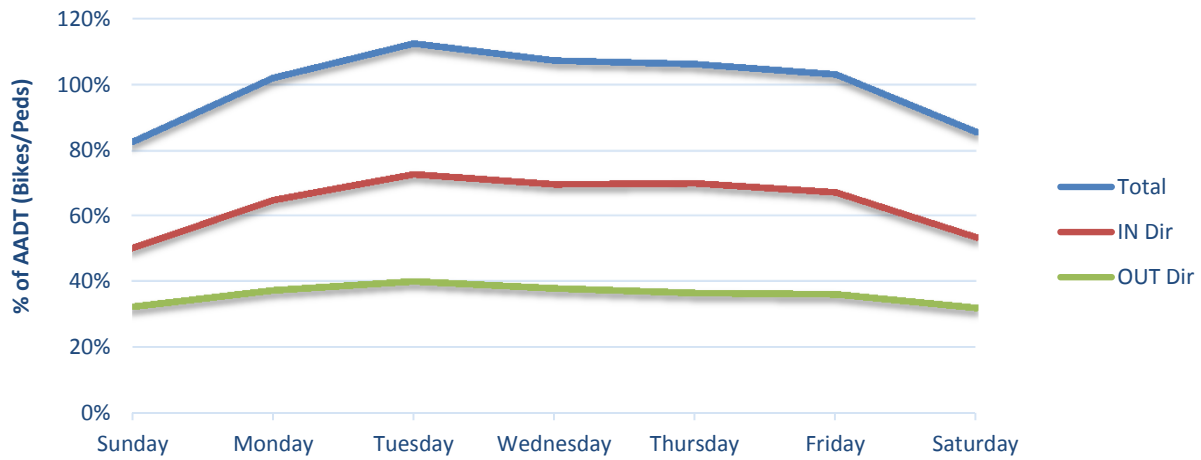
Days of Data: 266  
Percent Complete (Year): 73%  
Common Errors / Notes:

# Traffic Patterns

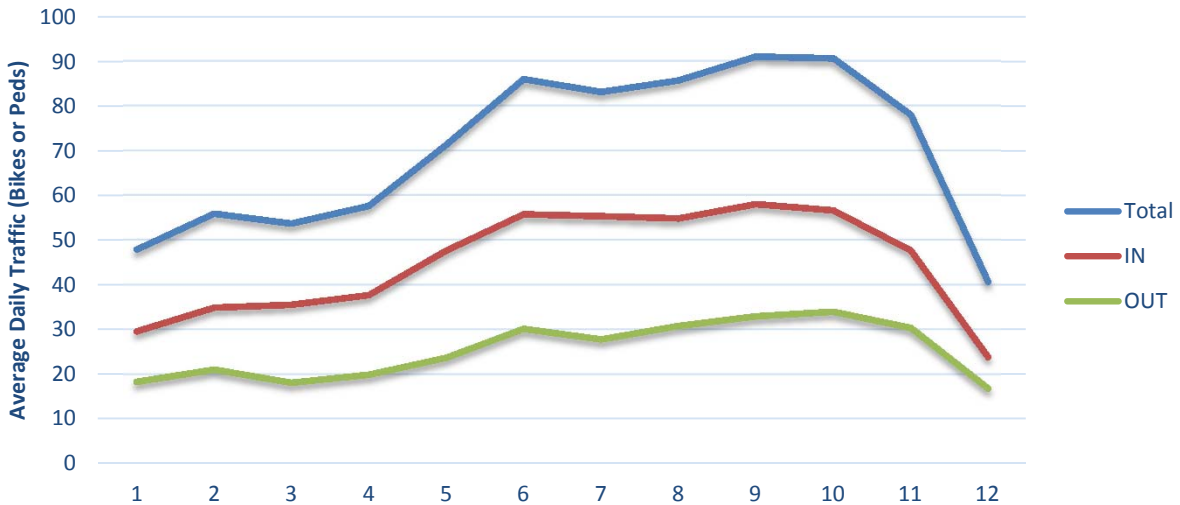
## Hour of Day



## Day of Week



## Month of Year





**Non-Motorized Monitoring  
2016 Counter Summary  
8/31/2017**

**Count Site Information**

Location: 8th St - West of N Erie Ave  
Count Mode: Bicycle  
Count Site ID: B90011  
Lat/Long: 38.27432 / -104.60265  
Facility Type: On Sidewalk  
IN Direction: Westbound  
OUT Direction: Eastbound

**Travel Volume Statistics**

Total Volume: 19,158  
AADT: 39  
Weekday/Weekend Index (WD/WE): 2.38  
AM-PM/Mid-Day Index (AMPM/Mid-Day): 0.65  
Directional Split (IN / OUT): 49% 51%  
Peak Day: 98

DOW Averages:

**Annual Average Day of the Week (AADW)**

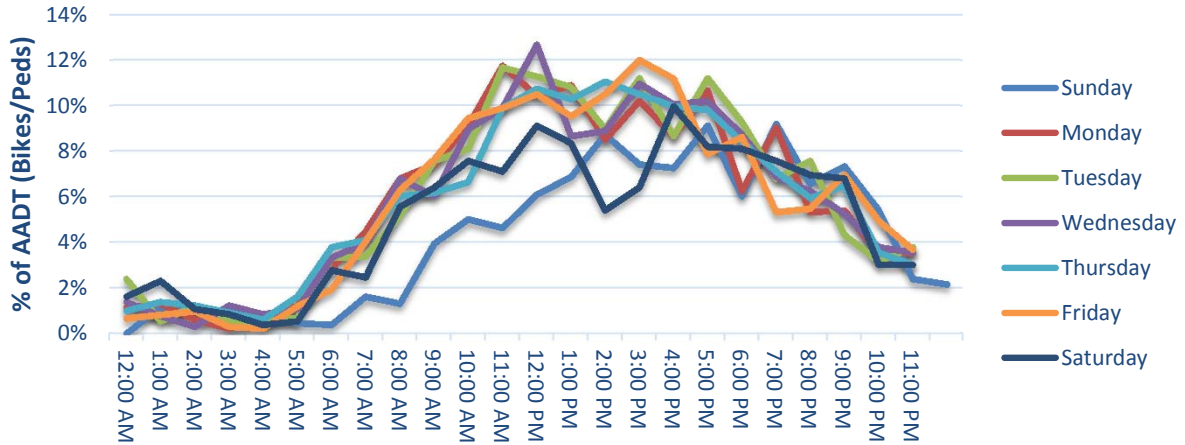
Day of Week	Total	IN	OUT
Sunday	19	6	13
Monday	42	18	24
Tuesday	50	22	28
Wednesday	51	22	29
Thursday	47	21	26
Friday	45	18	27
Saturday	20	7	14

**Data Quality**

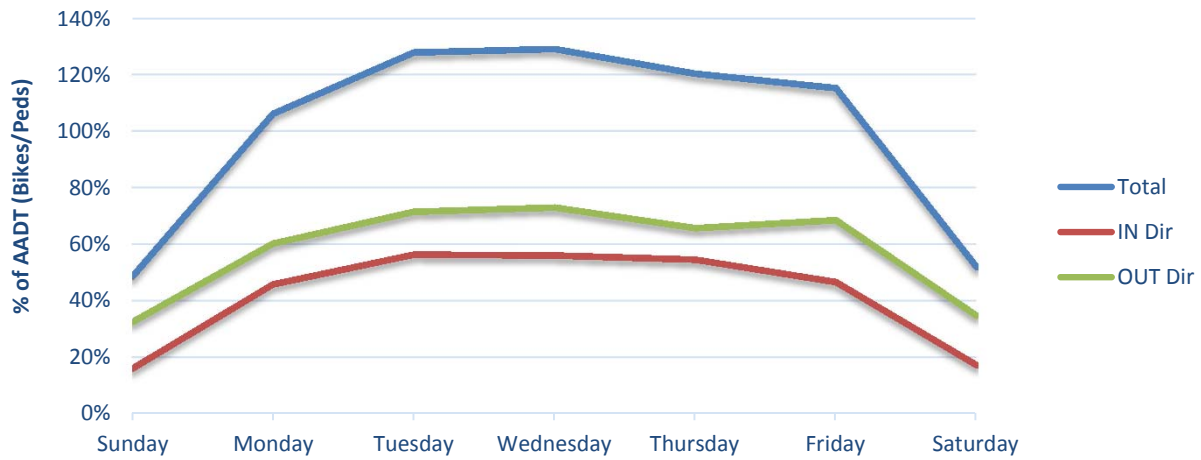
Days of Data: 266  
Percent Complete (Year): 73%  
Common Errors / Notes:

# Traffic Patterns

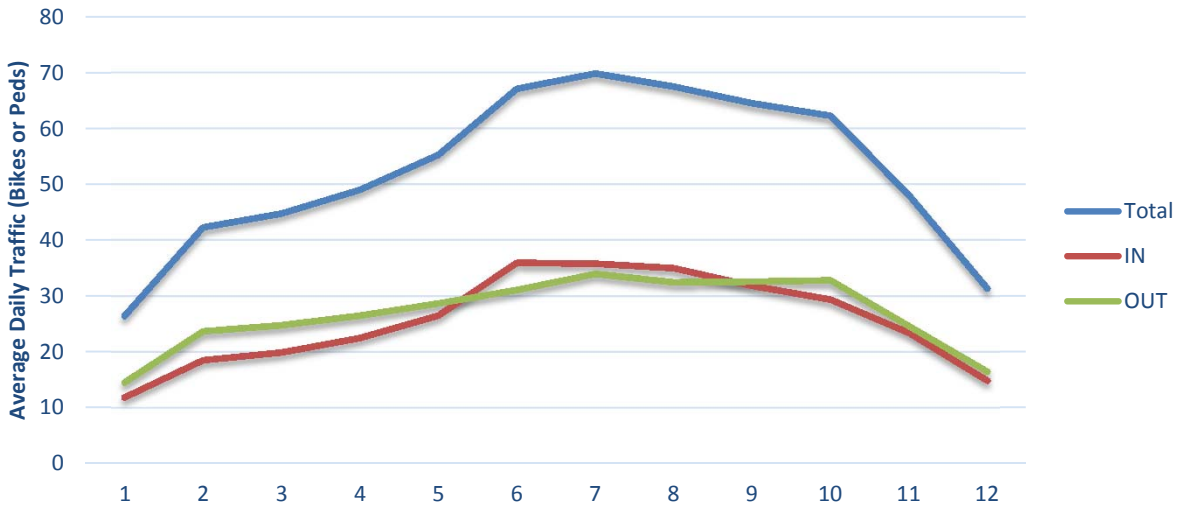
## Hour of Day



## Day of Week



## Month of Year





**Non-Motorized Monitoring  
2016 Counter Summary  
8/31/2017**

**Count Site Information**

Location: Memorial Dr - Between Parkview and Willow Valley  
Count Mode: Bicycle  
Count Site ID: B90012  
Lat/Long: 30.07200 / -102.61519  
Facility Type: On-Road  
IN Direction: Northbound  
OUT Direction: Southbound

**Travel Volume Statistics**

Total Volume: 6,180  
AADT: 19  
Weekday/Weekend Index (WD/WE): 1.44  
AM-PM/Mid-Day Index (AMPM/Mid-Day): 1.02  
Directional Split (IN / OUT): 57% 43%  
Peak Day: 43

DOW Averages:

**Annual Average Day of the Week (AADW)**

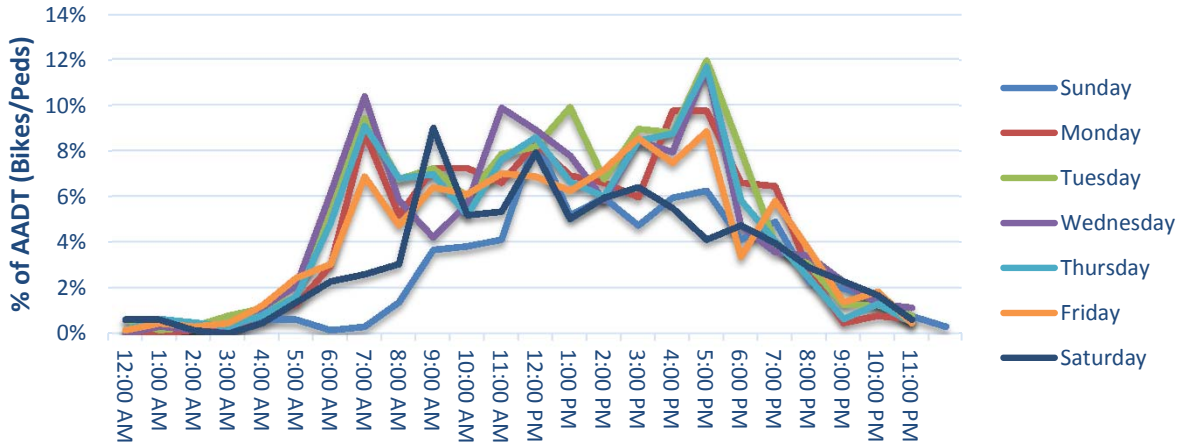
Day of Week	Total	IN	OUT
Sunday	13	8	5
Monday	20	12	8
Tuesday	23	13	10
Wednesday	22	12	9
Thursday	21	12	10
Friday	20	11	9
Saturday	16	10	6

**Data Quality**

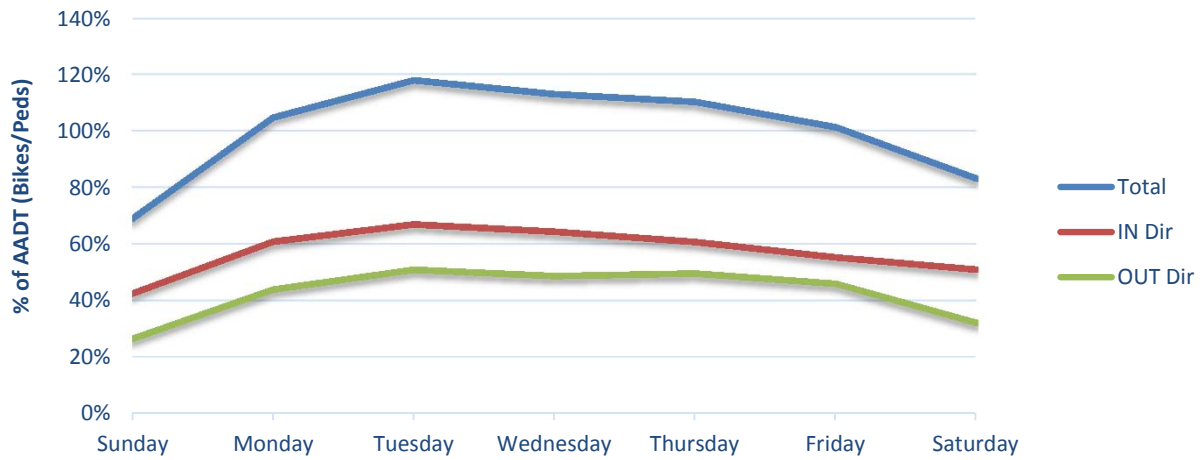
Days of Data: 266  
Percent Complete (Year): 73%  
Common Errors / Notes:

# Traffic Patterns

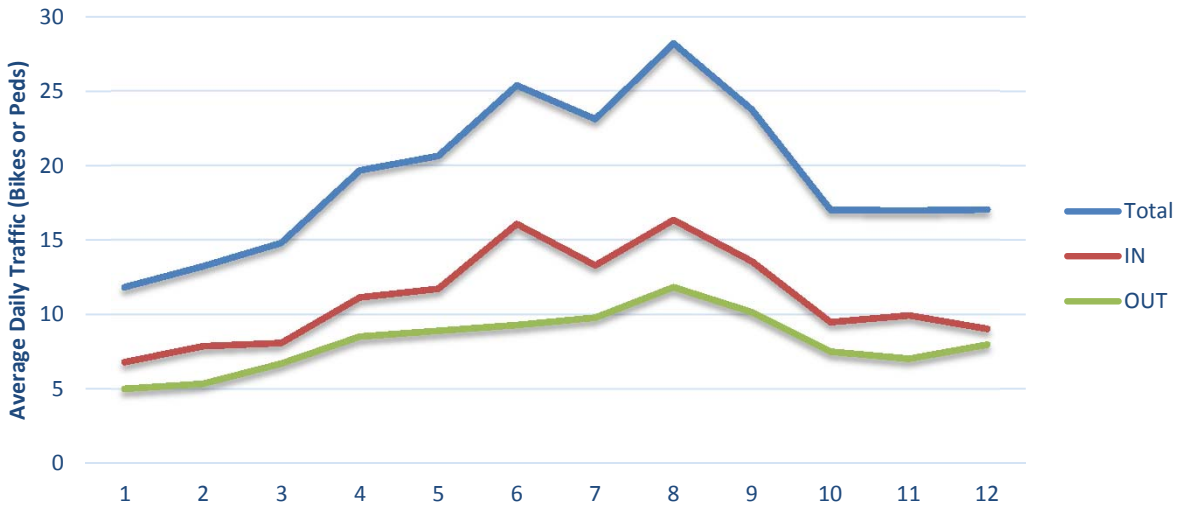
## Hour of Day



## Day of Week



## Month of Year





**Non-Motorized Monitoring  
2016 Counter Summary**

8/31/2017

**Count Site Information**

Location: Platte River Trail - South of Clear Creek Trail  
Count Mode: Bicycle  
Count Site ID: B90013  
Lat/Long: 39.82708 / -104.94971  
Facility Type: Multi-Use Trail  
IN Direction: Eastbound  
OUT Direction: Westbound

**Travel Volume Statistics**

Total Volume: 57,629  
AADT: 180  
Weekday/Weekend Index (WD/WE): 0.54  
AM-PM/Mid-Day Index (AMPM/Mid-Day): 0.82  
Directional Split (IN / OUT): 49% 51%  
Peak Day: 670

DOW Averages:

**Annual Average Day of the Week (AADW)**

Day of Week	Total	IN	OUT
Sunday	272	137	135
Monday	150	74	76
Tuesday	133	63	69
Wednesday	154	74	80
Thursday	142	67	75
Friday	144	70	74
Saturday	267	134	133

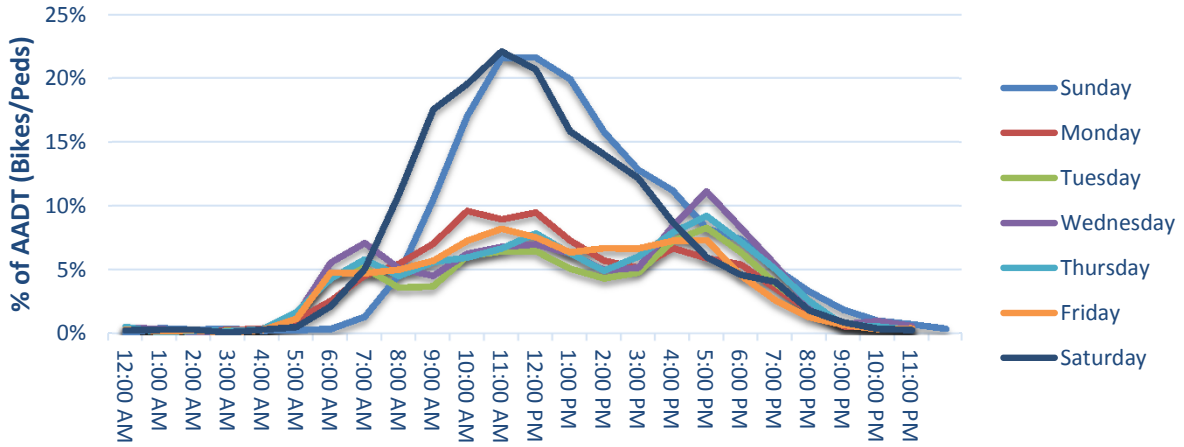
**Data Quality**

Days of Data: 320  
Percent Complete (Year): 88%  
Common Errors / Notes:

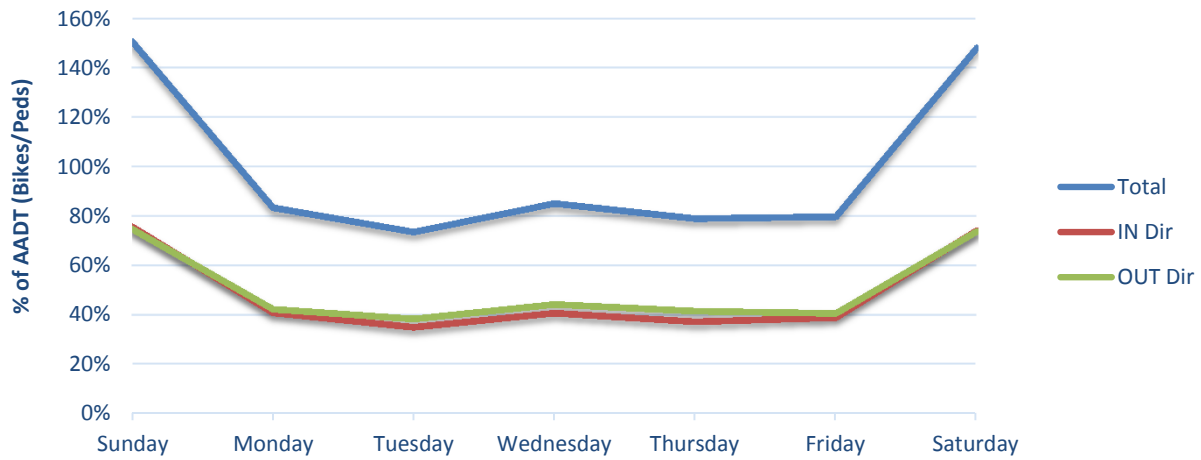


# Traffic Patterns

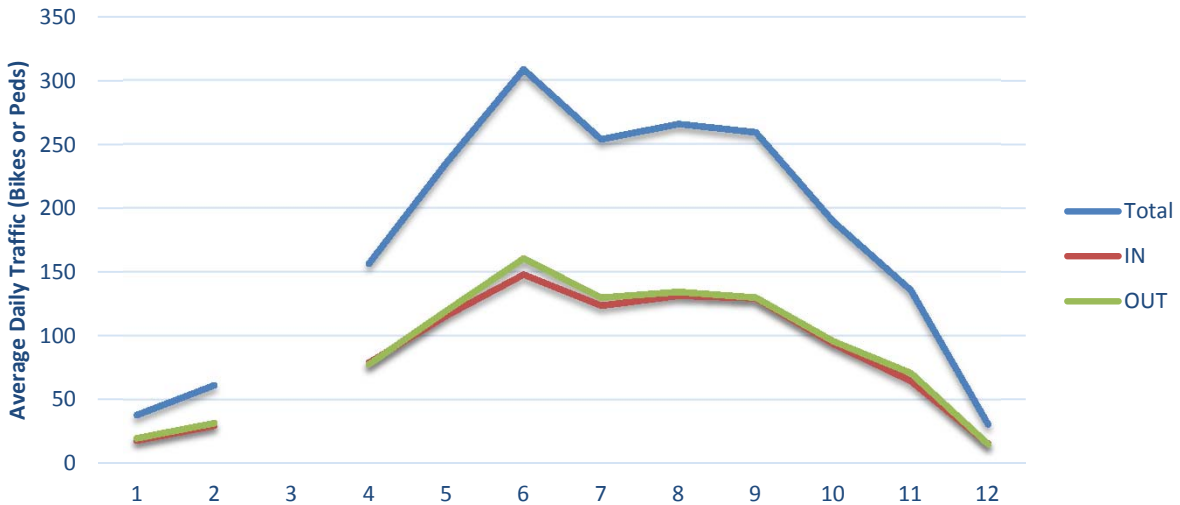
## Hour of Day



## Day of Week



## Month of Year





**Non-Motorized Monitoring  
2016 Counter Summary  
8/31/2017**

**Count Site Information**

Location: Multi-Use Trail @ Copper Mountain  
Count Mode: Bicycle  
Count Site ID: B90015  
Lat/Long: 39.50018, -106.16472  
Facility Type: Multi-Use Trail  
IN Direction: Eastbound  
OUT Direction: Westbound

**Travel Volume Statistics**

Total Volume: 61,995  
AADT: 180  
Weekday/Weekend Index (WD/WE): 0.37  
AM-PM/Mid-Day Index (AMPM/Mid-Day): 0.10  
Directional Split (IN / OUT): 65% 35%  
Peak Day: 3673

DOW Averages:

**Annual Average Day of the Week (AADW)**

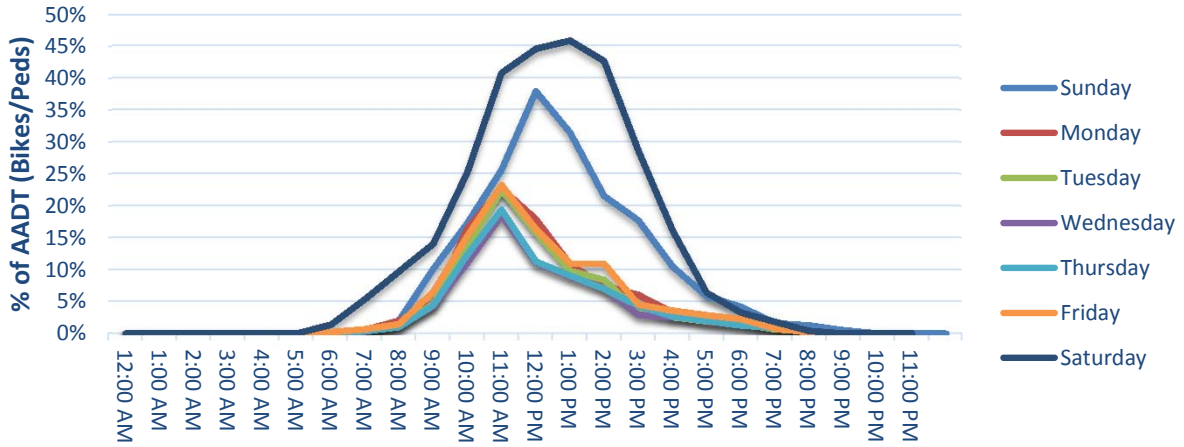
Day of Week	Total	IN	OUT
Sunday	265	177	88
Monday	142	94	47
Tuesday	119	84	35
Wednesday	101	69	32
Thursday	110	75	34
Friday	138	95	43
Saturday	386	222	165

**Data Quality**

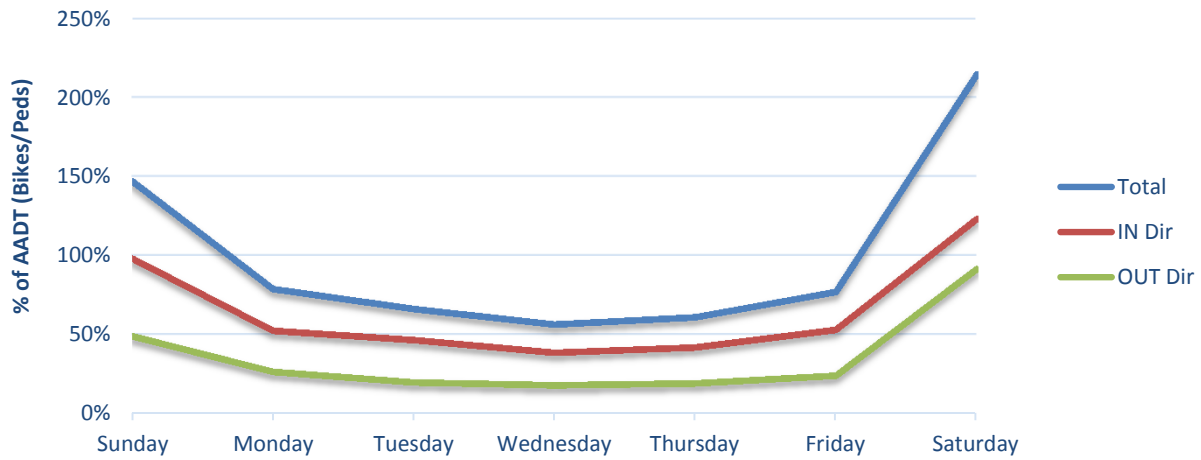
Days of Data: 337  
Percent Complete (Year): 92%  
Common Errors / Notes:

# Traffic Patterns

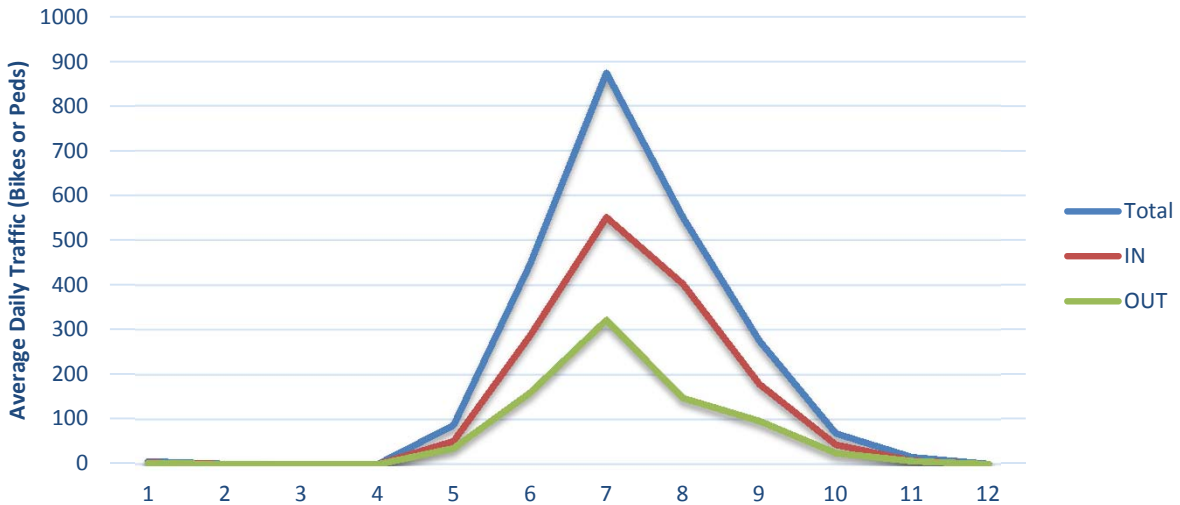
## Hour of Day



## Day of Week



## Month of Year





**Non-Motorized Monitoring  
2016 Counter Summary  
8/31/2017**

**Count Site Information**

Location: Sidepath along Broadway - Between West Ave & River  
Count Mode: Bicycle  
Count Site ID: B90018  
Lat/Long: 39.06811 / -108.57970  
Facility Type: Sidepath  
IN Direction: Eastbound  
OUT Direction: Westbound

**Travel Volume Statistics**

Total Volume: 21,114  
AADT: 92  
Weekday/Weekend Index (WD/WE): 1.18  
AM-PM/Mid-Day Index (AMPM/Mid-Day): 1.00  
Directional Split (IN / OUT): 57% 43%  
Peak Day: 198

DOW Averages:

**Annual Average Day of the Week (AADW)**

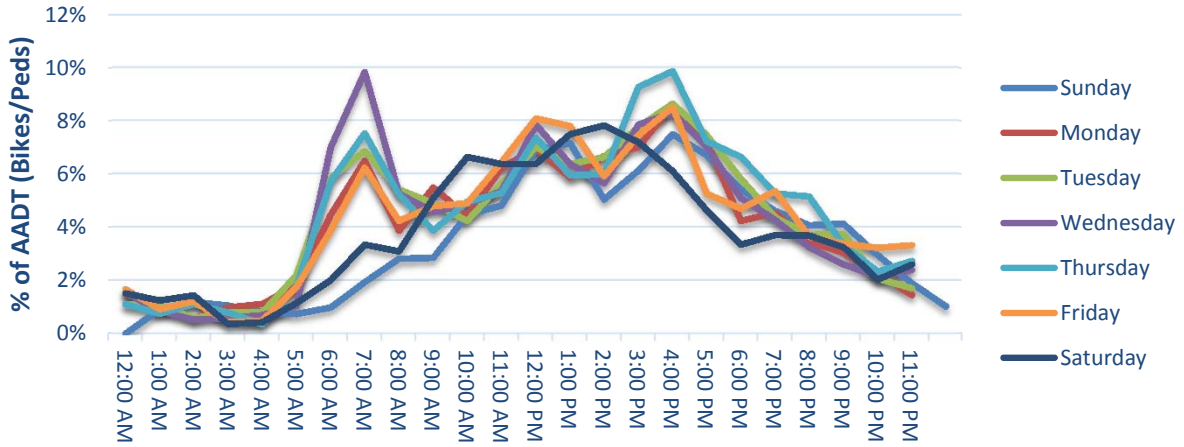
Day of Week	Total	IN	OUT
Sunday	79	43	36
Monday	92	52	40
Tuesday	97	54	43
Wednesday	97	55	42
Thursday	101	58	43
Friday	96	56	39
Saturday	84	47	37

**Data Quality**

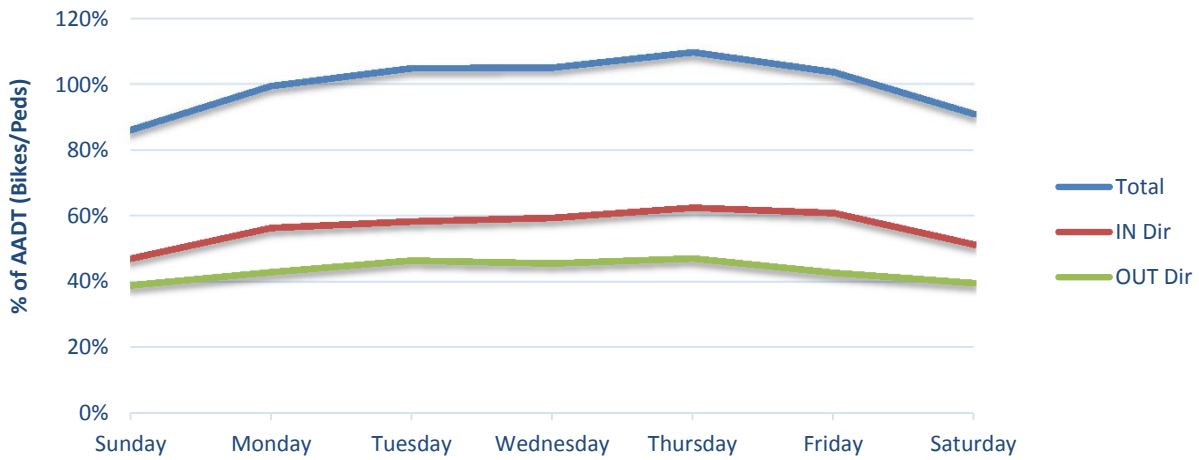
Days of Data: 229  
Percent Complete (Year): 63%  
Common Errors / Notes:

# Traffic Patterns

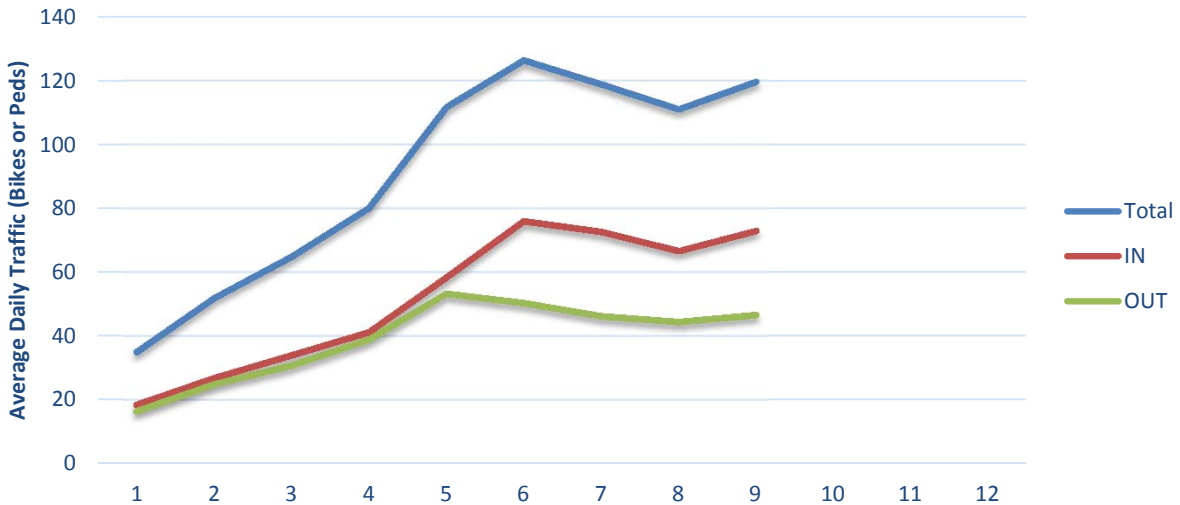
## Hour of Day



## Day of Week



## Month of Year





**Non-Motorized Monitoring  
2016 Counter Summary  
8/31/2017**

**Count Site Information**

Location: Mason Trail - Fort Collins  
Count Mode: Bicycle  
Count Site ID: B90020  
Lat/Long: 40.56298 / -105.07987  
Facility Type: Multi-use Path  
IN Direction: Northbound  
OUT Direction: Southbound

**Travel Volume Statistics**

Total Volume: 346,971  
AADT: 951  
Weekday/Weekend Index (WD/WE): 1.08  
AM-PM/Mid-Day Index (AMPM/Mid-Day): 1.33  
Directional Split (IN / OUT): 50% 50%  
Peak Day: 3146

DOW Averages:

**Annual Average Day of the Week (AADW)**

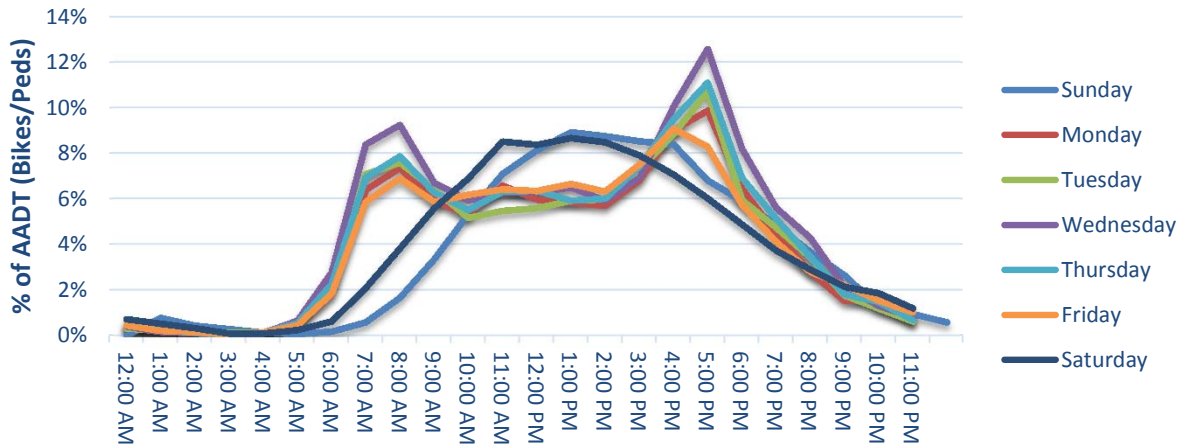
Day of Week	Total	IN	OUT
Sunday	858	429	429
Monday	971	486	485
Tuesday	956	479	477
Wednesday	1043	523	520
Thursday	961	478	483
Friday	926	466	461
Saturday	940	476	464

**Data Quality**

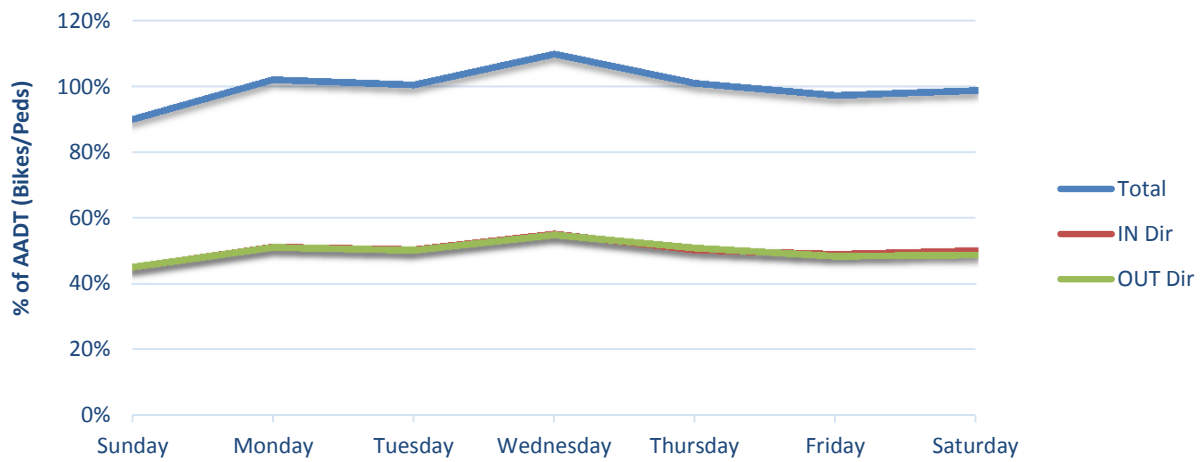
Days of Data: 266  
Percent Complete (Year): 73%  
Common Errors / Notes:

# Traffic Patterns

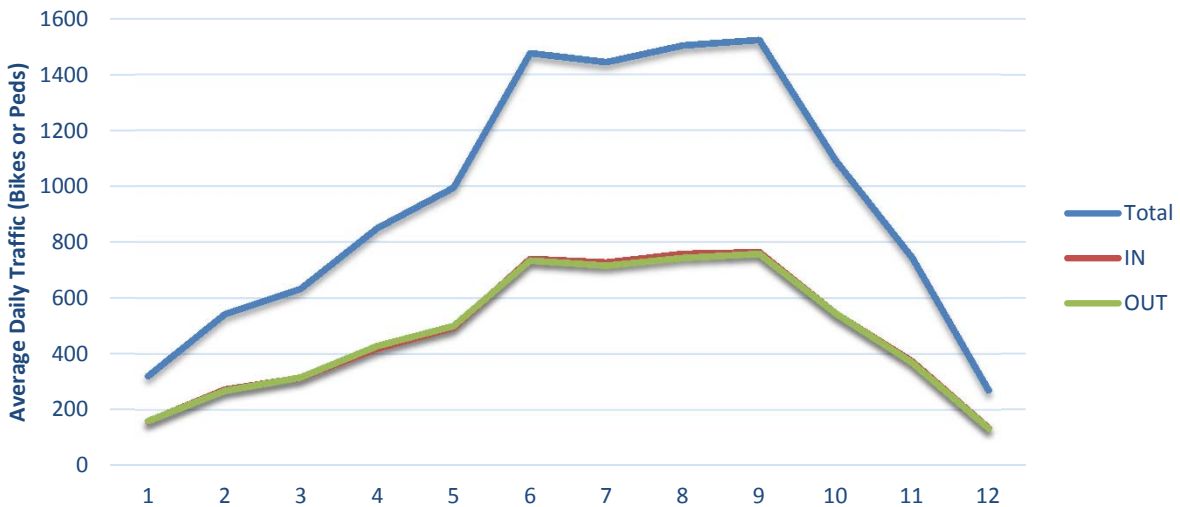
## Hour of Day



## Day of Week



## Month of Year





**Non-Motorized Monitoring  
2016 Counter Summary  
8/31/2017**

**Count Site Information**

Location: Midland Trail - Apprx 700' west of I-25  
Count Mode: Bicycle  
Count Site ID: B90021  
Lat/Long: 38.83086 / -104.83680  
Facility Type: Multi-Use Trail  
IN Direction: Eastbound  
OUT Direction: Westbound

**Travel Volume Statistics**

Total Volume: 24,401  
AADT: 92  
Weekday/Weekend Index (WD/WE): 0.82  
AM-PM/Mid-Day Index (AMPM/Mid-Day): 0.72  
Directional Split (IN / OUT): 55% 45%  
Peak Day: 194

DOW Averages:

**Annual Average Day of the Week (AADW)**

Day of Week	Total	IN	OUT
Sunday	104	57	47
Monday	87	47	40
Tuesday	81	44	37
Wednesday	90	49	41
Thursday	91	49	42
Friday	84	47	36
Saturday	108	60	48

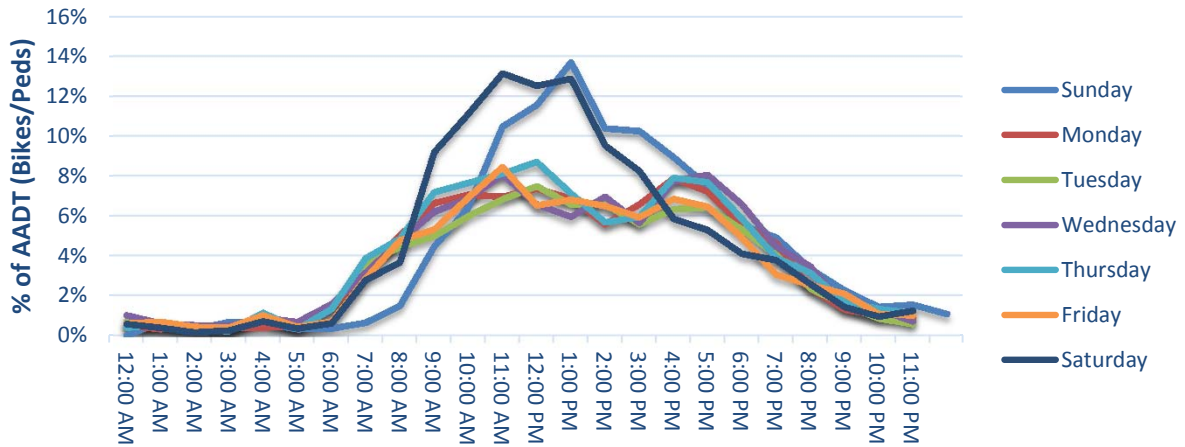
**Data Quality**

Days of Data: 265  
Percent Complete (Year): 73%  
Common Errors / Notes:

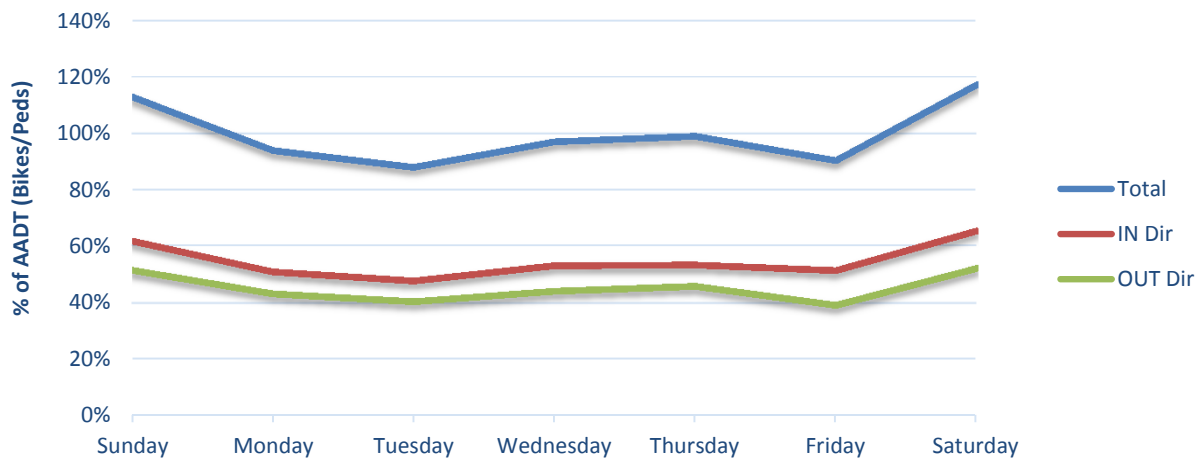


# Traffic Patterns

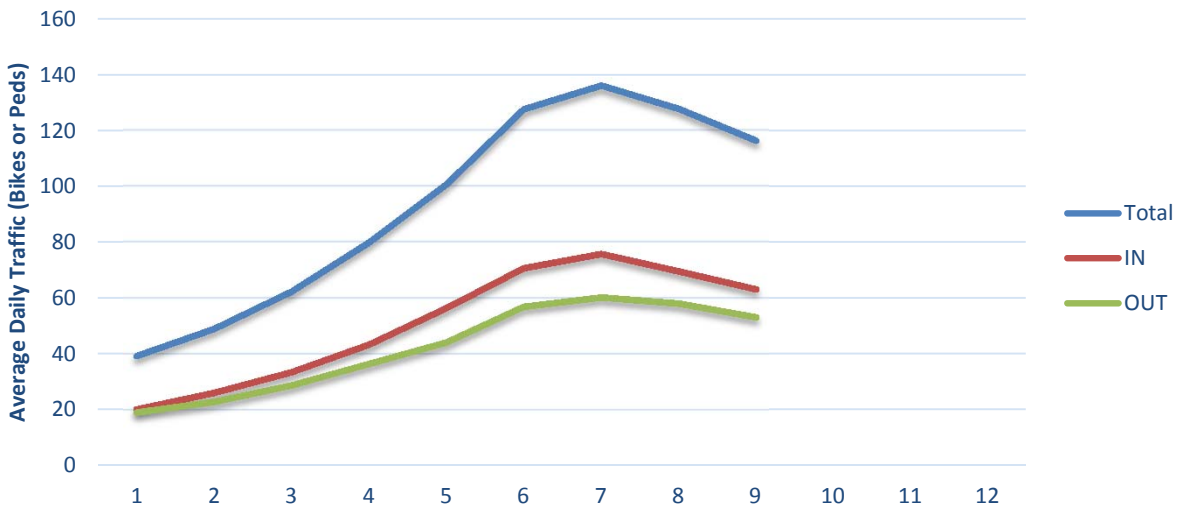
## Hour of Day



## Day of Week



## Month of Year





**Non-Motorized Monitoring  
2016 Counter Summary  
8/31/2017**

**Count Site Information**

Location: Tejon St - South of I-25  
Count Mode: Bicycle  
Count Site ID: B90022  
Lat/Long: 38.81480 / -104.82454  
Facility Type: On-Street  
IN Direction: Northbound  
OUT Direction: Southbound

**Travel Volume Statistics**

Total Volume: 38,452  
AADT: 107  
Weekday/Weekend Index (WD/WE): 0.91  
AM-PM/Mid-Day Index (AMPM/Mid-Day): 0.89  
Directional Split (IN / OUT): 50% 50%  
Peak Day: 229

DOW Averages:

**Annual Average Day of the Week (AADW)**

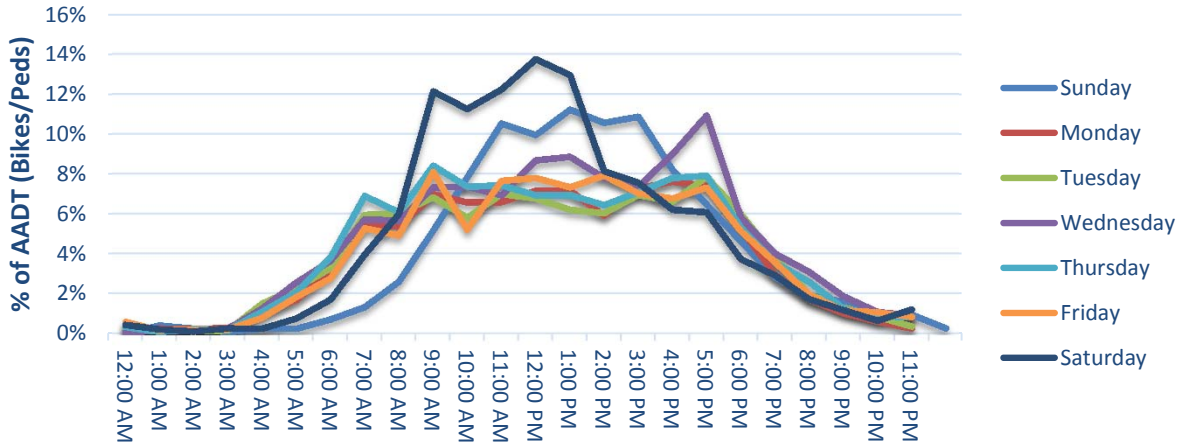
Day of Week	Total	IN	OUT
Sunday	107	53	54
Monday	99	52	48
Tuesday	102	53	50
Wednesday	112	57	55
Thursday	103	53	50
Friday	102	50	52
Saturday	122	57	65

**Data Quality**

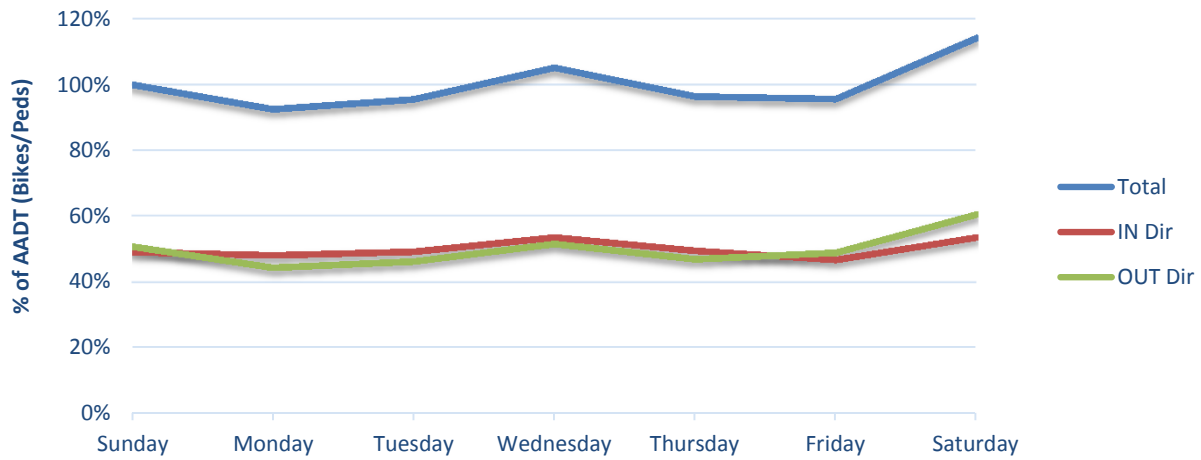
Days of Data: 360  
Percent Complete (Year): 99%  
Common Errors / Notes:

# Traffic Patterns

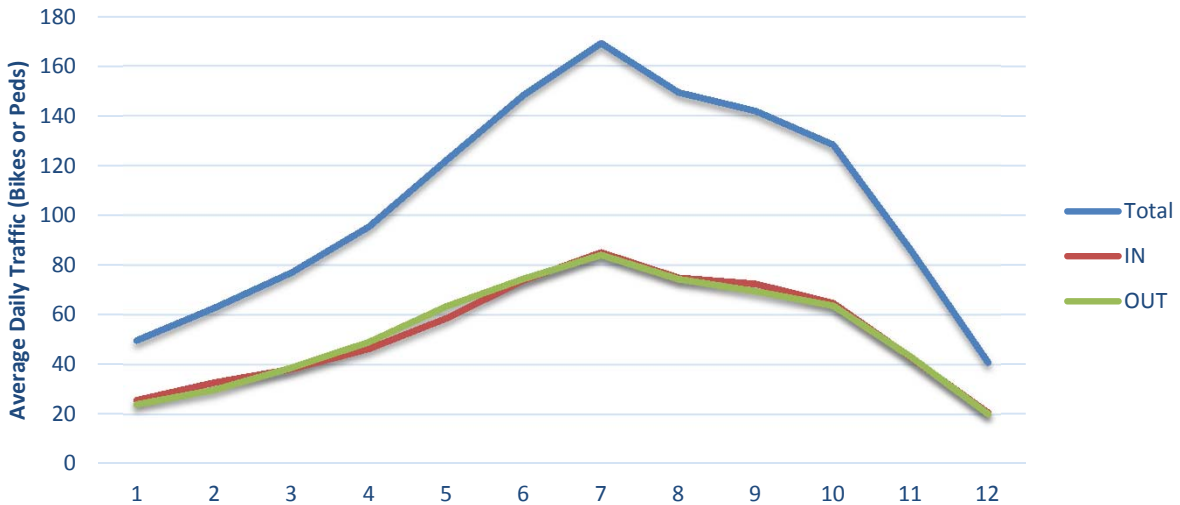
## Hour of Day



## Day of Week



## Month of Year





**Non-Motorized Monitoring  
2016 Counter Summary  
8/31/2017**

**Count Site Information**

Location: US 36 Bikeway - Westminster  
Count Mode: Bicycle  
Count Site ID: B90023  
Lat/Long: 39.86781 / -105.05895  
Facility Type: Multi-Use Trail  
IN Direction: Northbound  
OUT Direction: Southbound

**Travel Volume Statistics**

Total Volume: 50,489  
AADT: 138  
Weekday/Weekend Index (WD/WE): 0.63  
AM-PM/Mid-Day Index (AMPM/Mid-Day): 1.22  
Directional Split (IN / OUT): 52% 48%  
Peak Day: 626

DOW Averages:

**Annual Average Day of the Week (AADW)**

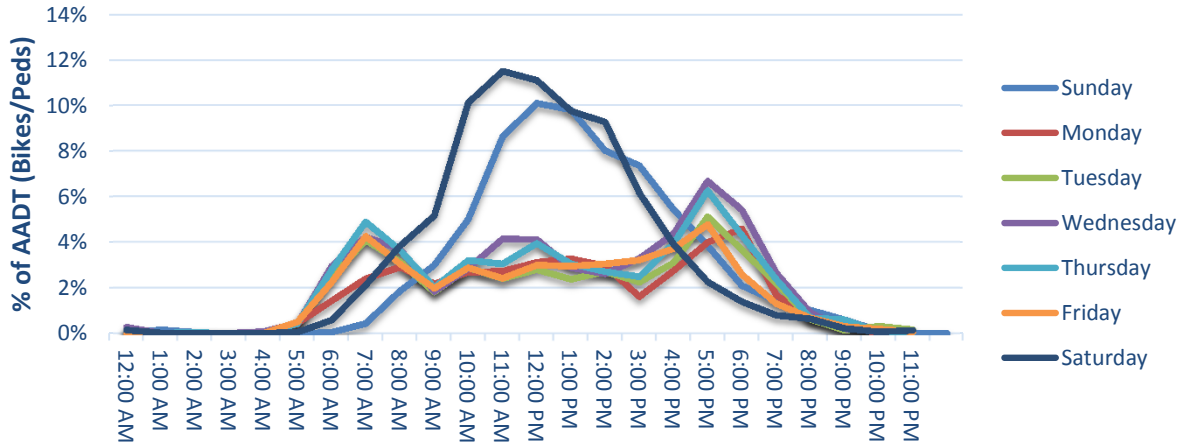
Day of Week	Total	IN	OUT
Sunday	183	92	91
Monday	113	59	54
Tuesday	113	60	53
Wednesday	131	68	63
Thursday	124	65	59
Friday	110	58	53
Saturday	194	100	94

**Data Quality**

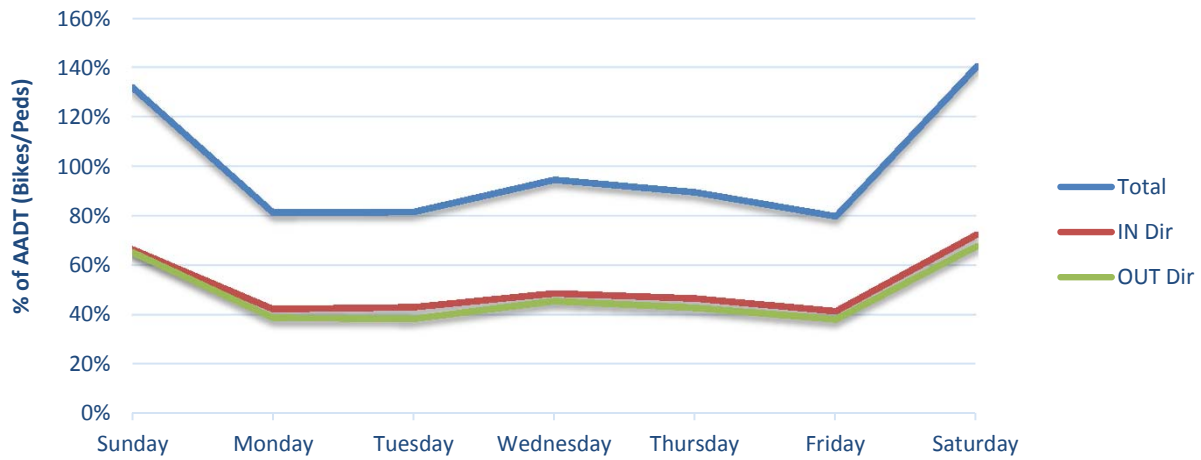
Days of Data: 365  
Percent Complete (Year): 100%  
Common Errors / Notes:

# Traffic Patterns

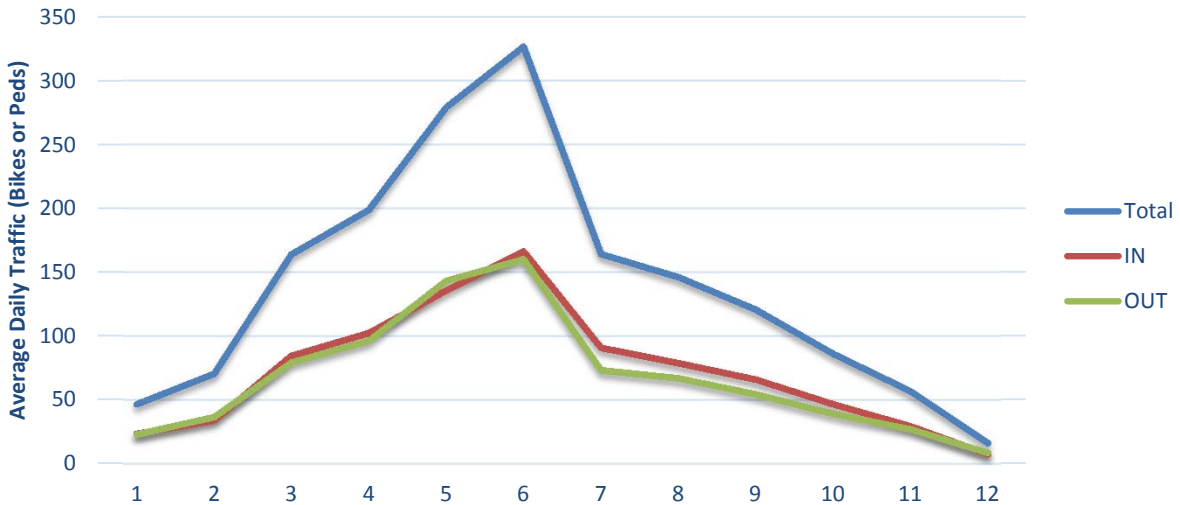
## Hour of Day



## Day of Week



## Month of Year





**Non-Motorized Monitoring  
2016 Counter Summary  
8/31/2017**

**Count Site Information**

Location: US 36 Bikeway Broomfield - North of Uptown Ave  
Count Mode: Bicycle  
Count Site ID: B90024  
Lat/Long: 39.903075 / -105.083047  
Facility Type: Multi-Use Path  
IN Direction: Northbound  
OUT Direction: Southbound

**Travel Volume Statistics**

Total Volume: 103,306  
AADT: 282  
Weekday/Weekend Index (WD/WE): 0.59  
AM-PM/Mid-Day Index (AMPM/Mid-Day): 0.97  
Directional Split (IN / OUT): 58% 42%  
Peak Day: 1308

DOW Averages:

**Annual Average Day of the Week (AADW)**

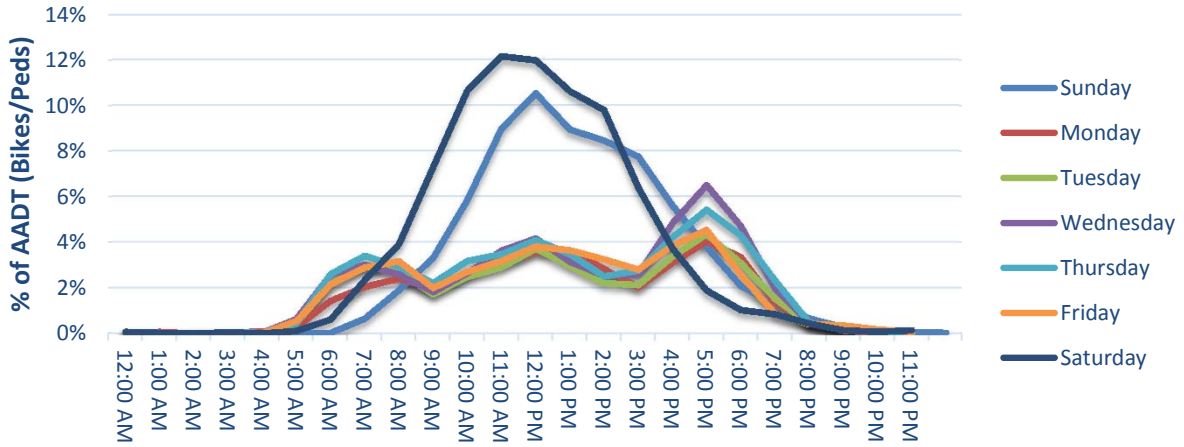
Day of Week	Total	IN	OUT
Sunday	392	237	156
Monday	223	126	97
Tuesday	217	123	94
Wednesday	259	145	114
Thursday	247	140	107
Friday	230	131	99
Saturday	406	249	157

**Data Quality**

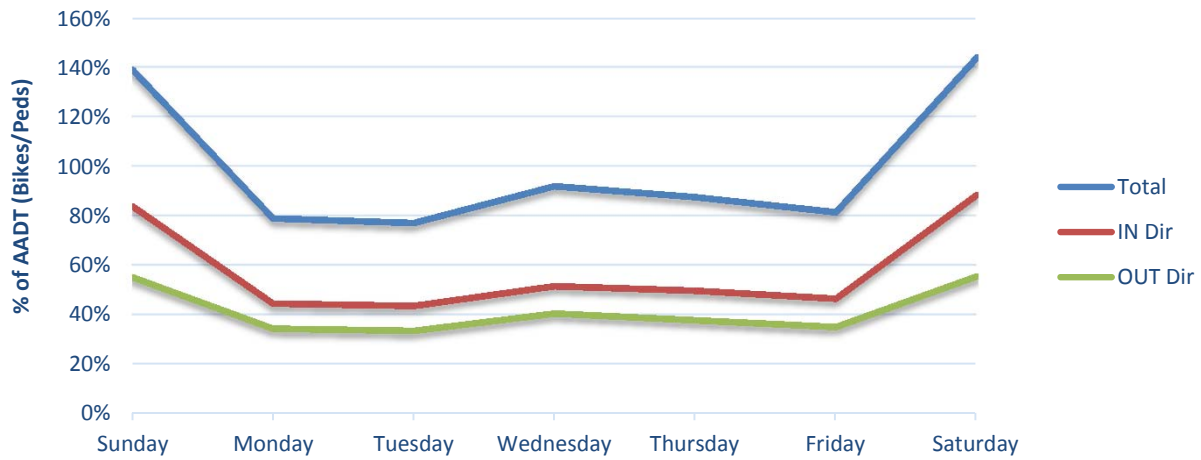
Days of Data: 366  
Percent Complete (Year): 100%  
Common Errors / Notes:

# Traffic Patterns

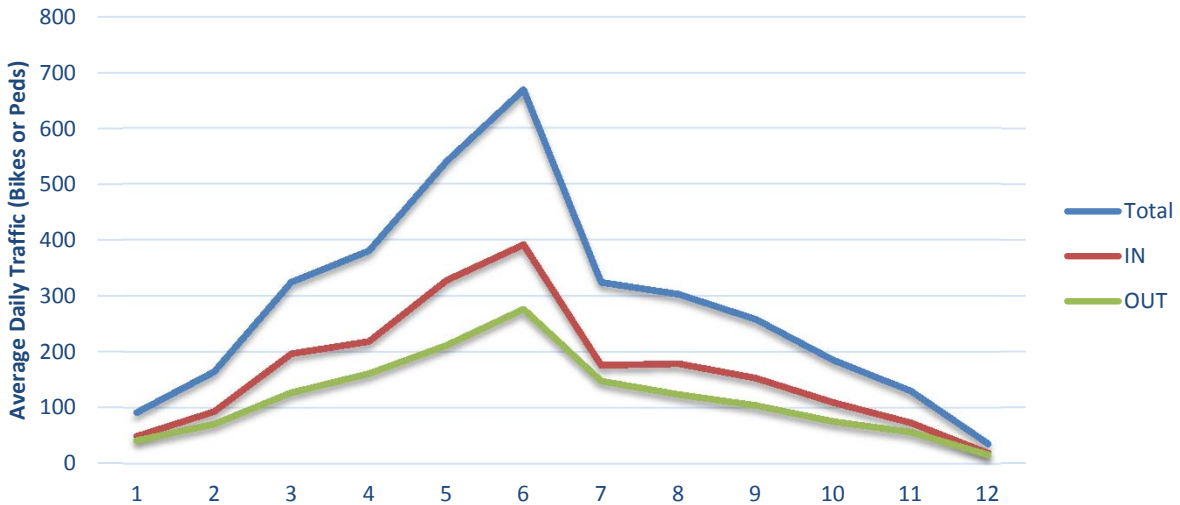
## Hour of Day



## Day of Week



## Month of Year





**Non-Motorized Monitoring  
2016 Counter Summary  
8/31/2017**

**Count Site Information**

Location: Cherry Creek Trail at Champa St - Bike  
Count Mode: Bicycle  
Count Site ID: B90027  
Lat/Long: 39.74254 / -104.99987  
Facility Type: Multi-use Path  
IN Direction:  
OUT Direction:

**Travel Volume Statistics**

Total Volume: 1,317,781  
AADT: 3576  
Weekday/Weekend Index (WD/WE): 1.16  
AM-PM/Mid-Day Index (AMPM/Mid-Day): 1.95  
Directional Split (IN / OUT): 52% 48%  
Peak Day: 13754

DOW Averages:

**Annual Average Day of the Week (AADW)**

Day of Week	Total	IN	OUT
Sunday	3119	1600	1519
Monday	3766	1973	1793
Tuesday	3614	1887	1727
Wednesday	4151	2160	1991
Thursday	3772	1953	1819
Friday	3327	1721	1606
Saturday	3284	1653	1630

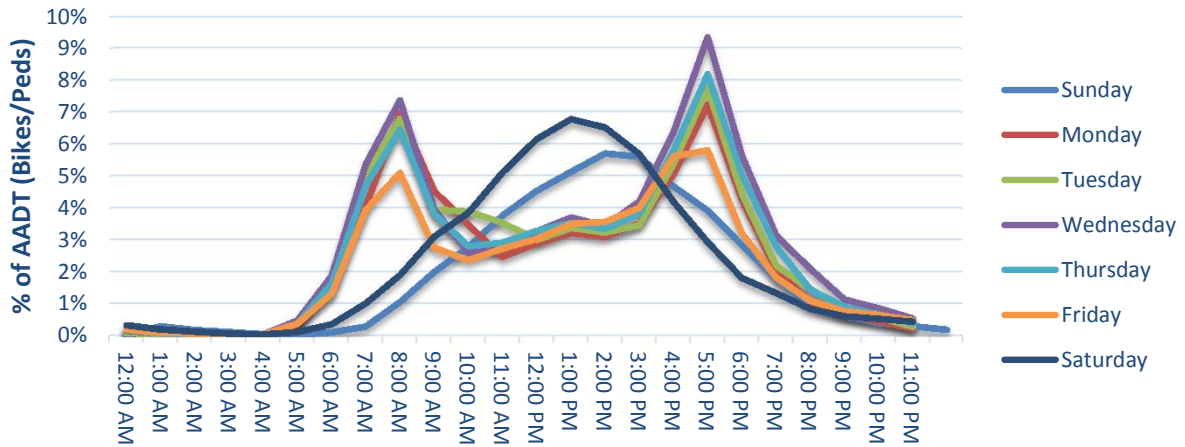
**Data Quality**

Days of Data: 364  
Percent Complete (Year): 100%  
Common Errors / Notes:

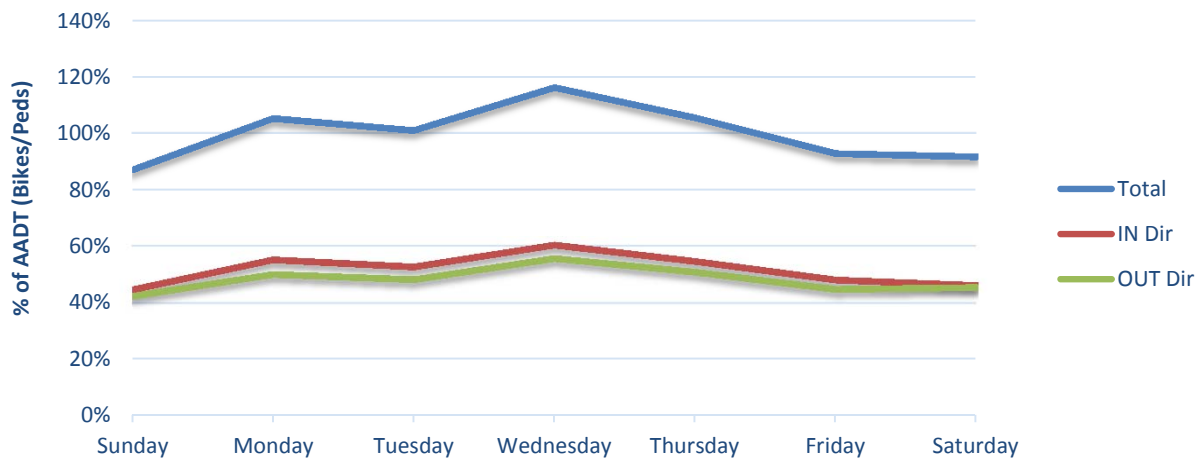


# Traffic Patterns

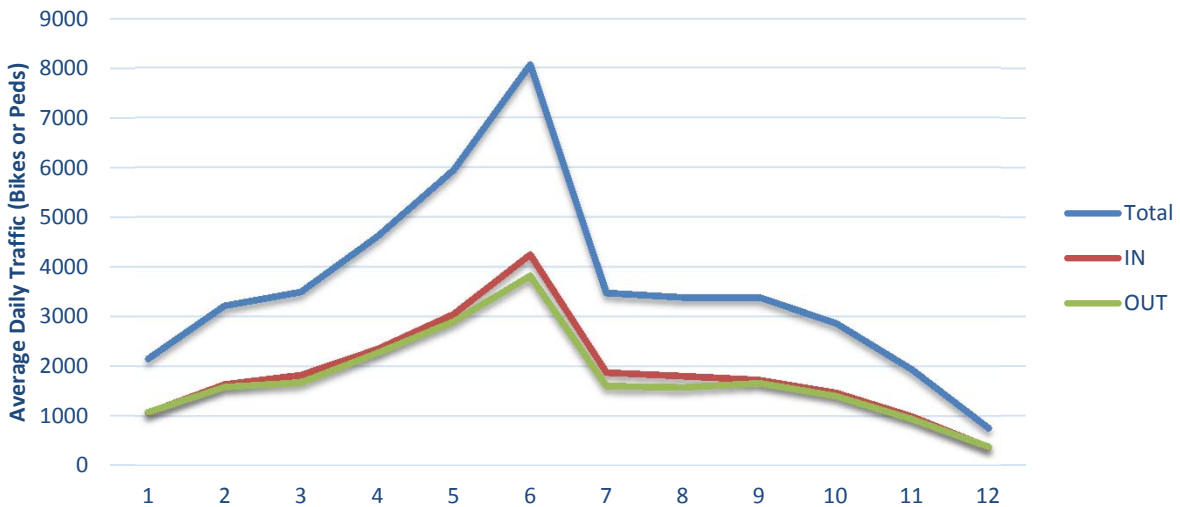
## Hour of Day



## Day of Week



## Month of Year





**Non-Motorized Monitoring  
2016 Counter Summary  
8/31/2017**

**Count Site Information**

Location: US 36 Bikeway parallel to on ramp from Foothills Pkw  
Count Mode: Bicycle  
Count Site ID: B90029  
Lat/Long: 39.983483 / -105.229389  
Facility Type: Multi-Use Path  
IN Direction: 0  
OUT Direction: 0

**Travel Volume Statistics**

Total Volume: 36,040  
AADT: 196  
Weekday/Weekend Index (WD/WE): 0.64  
AM-PM/Mid-Day Index (AMPM/Mid-Day): 1.35  
Directional Split (IN / OUT): 54% 46%  
Peak Day: 504

DOW Averages:

**Annual Average Day of the Week (AADW)**

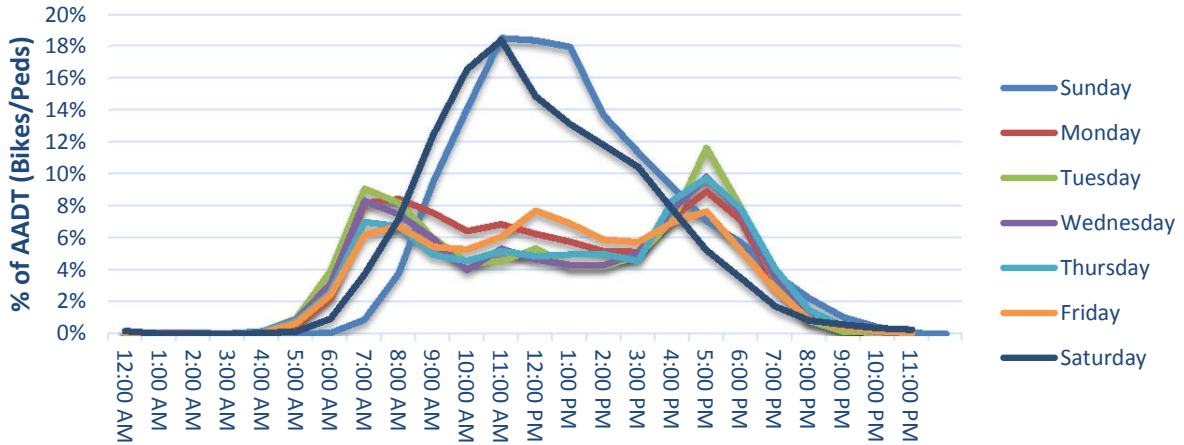
Day of Week	Total	IN	OUT
Sunday	270	147	123
Monday	179	95	84
Tuesday	171	93	79
Wednesday	166	89	77
Thursday	165	85	79
Friday	164	90	74
Saturday	255	142	113

**Data Quality**

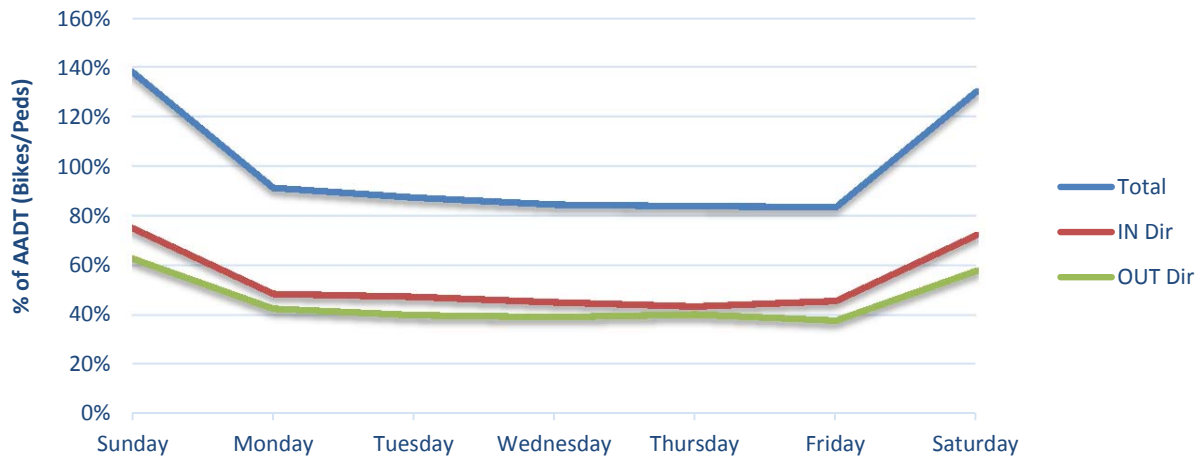
Days of Data: 184  
Percent Complete (Year): 50%  
Common Errors / Notes: Counter installed summer 2016

# Traffic Patterns

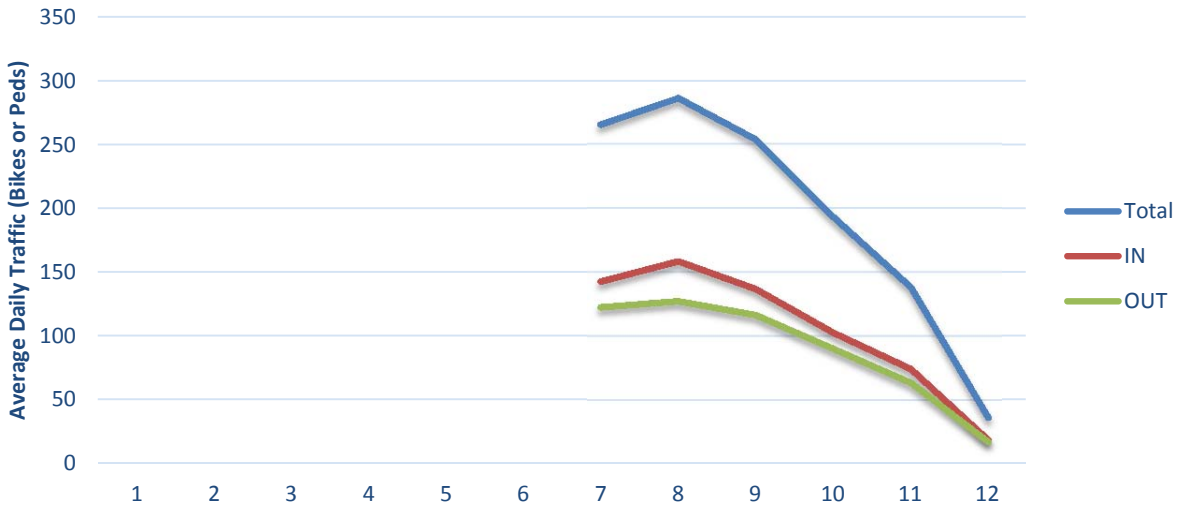
## Hour of Day



## Day of Week



## Month of Year





**Non-Motorized Monitoring  
2016 Counter Summary  
8/31/2017**

**Count Site Information**

Location: Cherry Creek Trail west of Holly St  
Count Mode: Bike/Ped Combined  
Count Site ID: C90025  
Lat/Long: 39.697563 / -104.923658  
Facility Type: Multi-Use Path  
IN Direction:  
OUT Direction:

**Travel Volume Statistics**

Total Volume: 427,430  
AADT: 1249  
Weekday/Weekend Index (WD/WE): 0.77  
AM-PM/Mid-Day Index (AMPM/Mid-Day): 1.12  
Directional Split (IN / OUT): 50% 50%  
Peak Day: 3165

DOW Averages:

**Annual Average Day of the Week (AADW)**

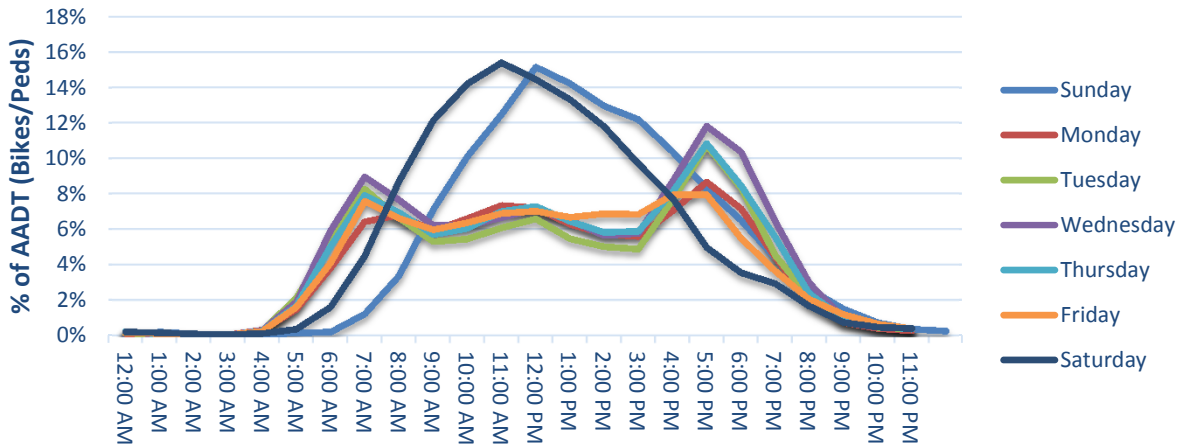
Day of Week	Total	IN	OUT
Sunday	1470	732	739
Monday	1131	580	550
Tuesday	1113	557	557
Wednesday	1254	652	602
Thursday	1146	581	565
Friday	1112	568	544
Saturday	1514	732	782

**Data Quality**

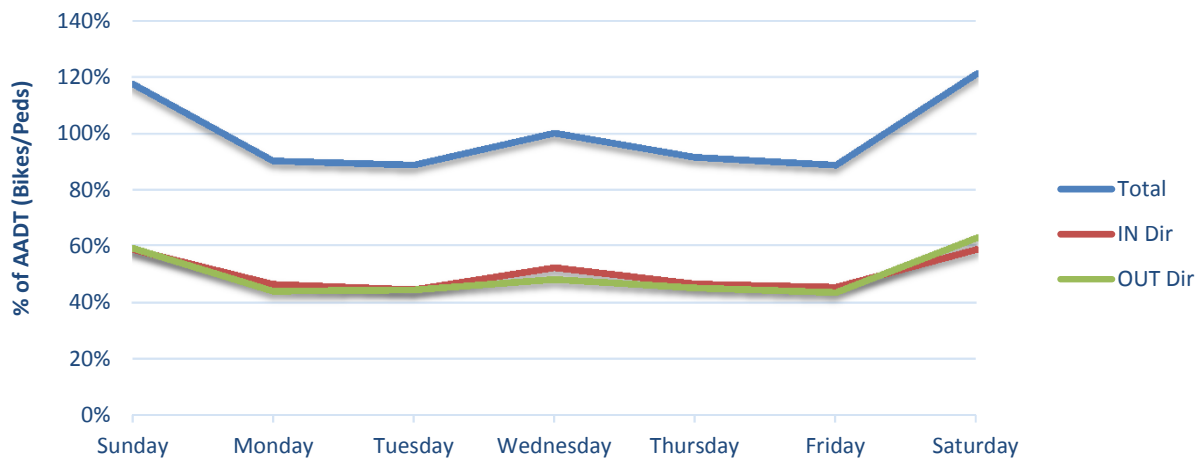
Days of Data: 343  
Percent Complete (Year): 94%  
Common Errors / Notes:

# Traffic Patterns

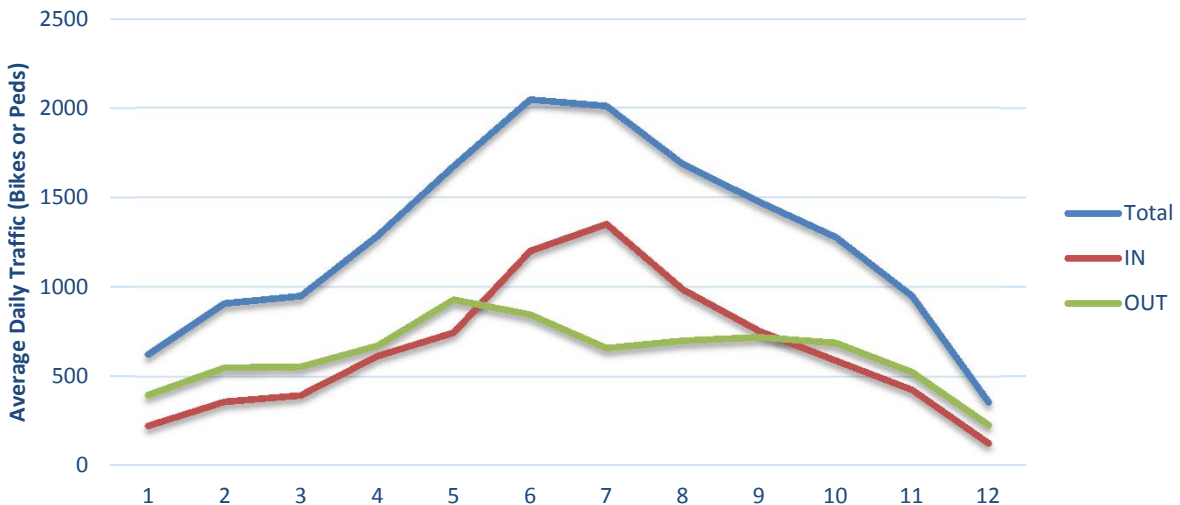
## Hour of Day



## Day of Week



## Month of Year





**Non-Motorized Monitoring  
2016 Counter Summary  
8/31/2017**

**Count Site Information**

Location: C470 Trail south of Ken Caryl Ave  
Count Mode: Bike/Ped Combined  
Count Site ID: C90026  
Lat/Long: 39.578412 / -105.140599  
Facility Type: Multi-Use Path  
IN Direction:  
OUT Direction:

**Travel Volume Statistics**

Total Volume: 51,217  
AADT: 222  
Weekday/Weekend Index (WD/WE): 0.43  
AM-PM/Mid-Day Index (AMPM/Mid-Day): 0.64  
Directional Split (IN / OUT): 48% 52%  
Peak Day: 663

DOW Averages:

**Annual Average Day of the Week (AADW)**

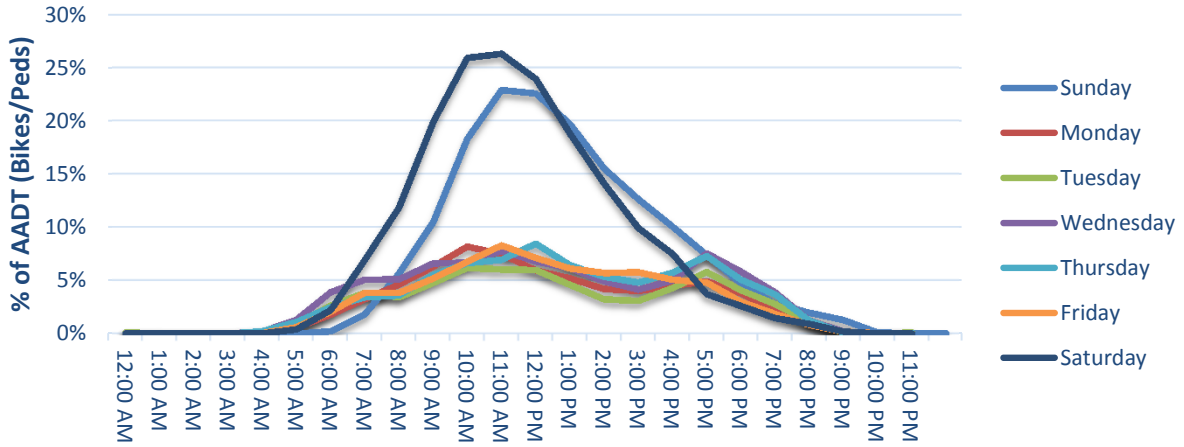
Day of Week	Total	IN	OUT
Sunday	352	166	186
Monday	152	73	79
Tuesday	141	69	73
Wednesday	184	91	93
Thursday	174	85	90
Friday	159	76	83
Saturday	394	187	207

**Data Quality**

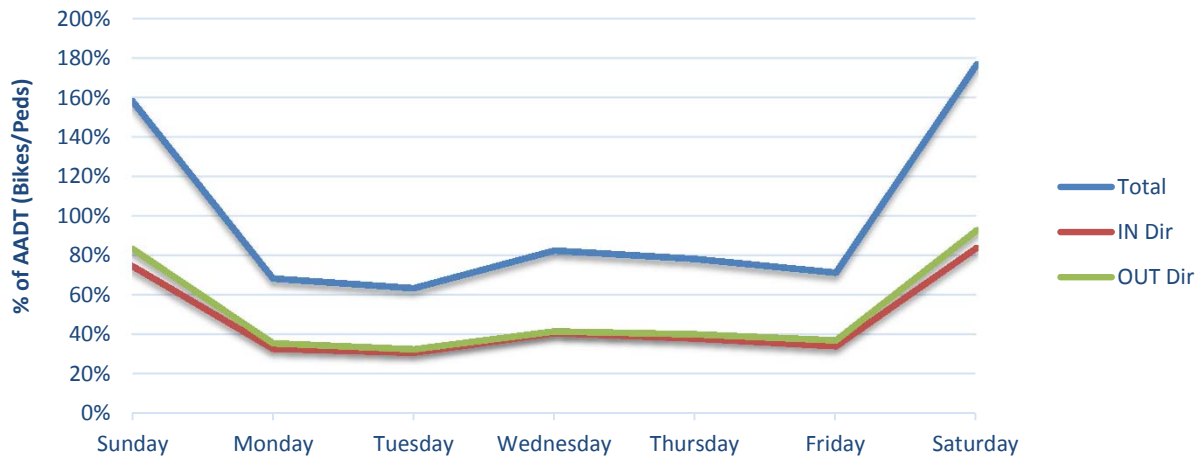
Days of Data: 232  
Percent Complete (Year): 64%  
Common Errors / Notes:

# Traffic Patterns

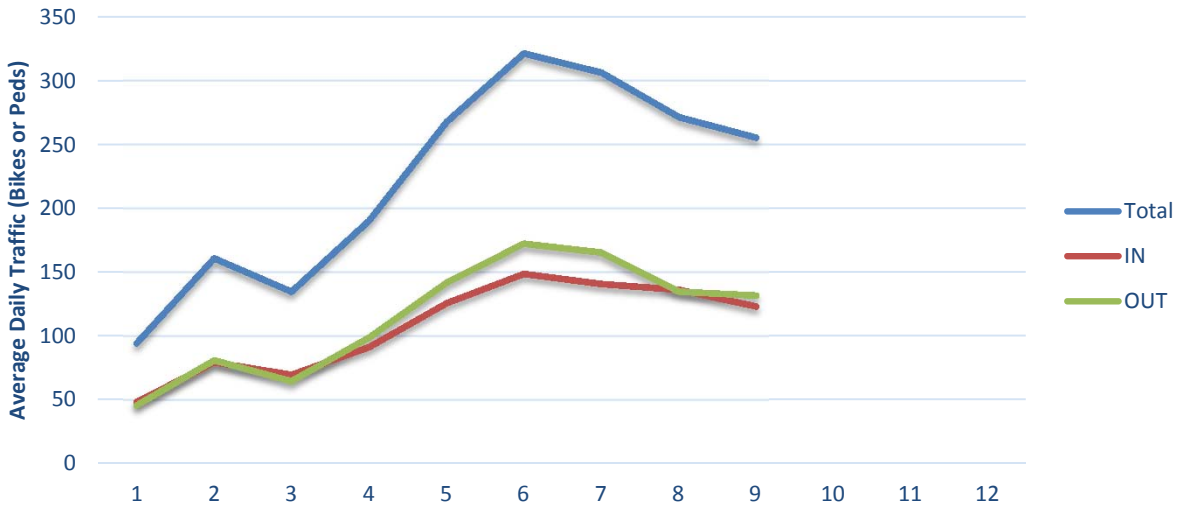
## Hour of Day



## Day of Week



## Month of Year





### Continuous Count Data Analysis

CDOT count data was analyzed to identify appropriate factor groups for each of the existing permanent continuous monitoring sites (PCMS). The ratio of average hourly volume for the peak commute periods (M-F, 7-9am and 4-6pm), to the midday average hourly volume (M-F, 11am-1 pm) was first identified to determine the weekday hourly pattern, or AM/PM Peak-to-Midday Ratio (1).

(1) AM/PM Peak-to-Midday Ratio: 
$$\frac{\sum_{M-F} (Vol_{7a-9a} + Vol_{4p-6p}) / 4}{\sum_{M-F} (Vol_{11a-1p}) / 2}$$

Day-of-week patterns were also identified by comparing the average daily weekday volume (M-F) to the average daily weekend volume (Sa-Su) (2).

(2) Weekday-to-Weekend Ratio: 
$$\frac{\text{Average Weekday Daily Traffic}}{\text{Average Weekend Daily Traffic}}$$

These two measures taken together provide a good overall indication of whether the site is more closely associated with commute or non-commute travel patterns, or demonstrates characteristics of both. Ratio values above 1.1 indicate a commute pattern, while values below 0.9 indicate a non-commute pattern (including recreation and other non-commute trips). Values between 0.9 and 1.1 experience both types of traffic and are therefore considered to be ‘mixed.’

The combination of AM/PM peak-to-midday and weekday-to-weekend ratios was used to classify each site as having a “Commute”, “Non-Commute”, or “Mixed” travel pattern, based on the ranges shown in Table A-1. The criteria can also be used to assign SDCs into factor groups. CDOT may wish to review the appropriateness of these thresholds as additional data is collected and evaluated.

**Table A-1. Factor Group Assignment Matrix**

		WEEKDAY-TO-WEEKEND RATIO		
		< 0.9	0.9 - 1.1	> 1.1
AM/PM PEAK-TO-MIDDAY RATIO	< 0.9	Non-Commute	Mixed	Mixed
	0.9 - 1.1	Mixed	Mixed	Mixed
	> 1.1	Mixed	Mixed	Commute

Tables A-2 through A-4 summarize the factor group assignments for the 24 active PCMS by pedestrian, bicycle, and combined counts.